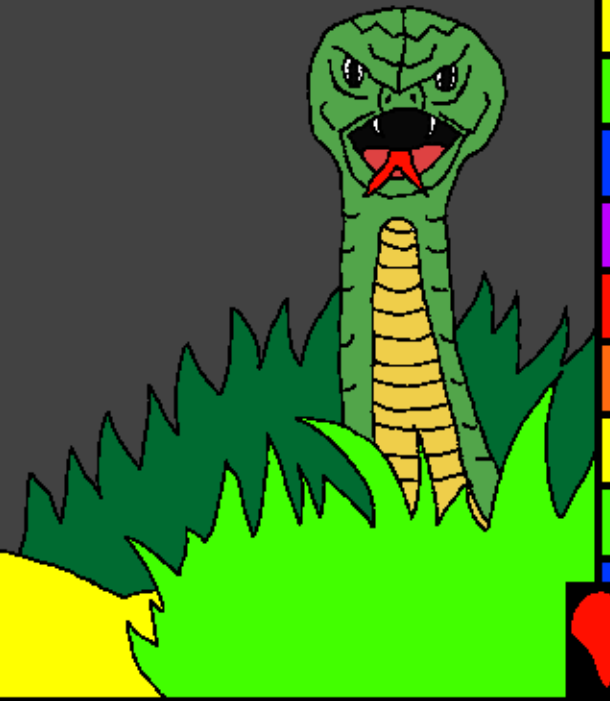


Baibulo na anamwani
Wovelhelha

Kuyambiwa kwa
maviho a muthuh



Wolembiwa ni: Edward Hughes

Umothonyeha ni: Byron Unger; Lazarus;
Alastair Paterson

Omukusa ni: M. Maillot; Tammy S.

Wotaphuhela ni: John Kaliwo

Wokumiha ni: Bible for Children
www.M1914.org

©2020 Bible for Children, Inc.

Liasense: Nywoo mokalano ehaki yokusha ni
oluwela sohimuwa seya wohimphakela nakoso.



MULUKUH WAPANGA
ERIONSE! Vamene
Mulukuh wapangaka
muthuh
ohamba.



Adam ni Mwiriye
Hava wari ohakalalala,
nikuuwela Mulukuh,
ophiyera siku
limodha ...





"Mulukuh
wahulelhani kuti
muhichelhe ya muthengo
uliwonse?" enowo yamukuva
Hava. "Tinorocho zamungoni
yothehne koma
umodha" Hava
walhotaka za ...





... muthekkho-
niwu tinorokhwa

"Mwakhwelhe iyayi".

"Munorophwana ni Mulukuh."

Hava wakhumbelha olha.

Zamutekhoh.

Hava wanyekewa ni
enowa ocha chipaso

cha mutekhowo.



Vamene Hava wahiwelha
Mulukuh, wamwinya
Adam chipatso cha
mutekho wakaniziwa
kuti achekeh.





Vamene

Adab ni Hava anachimwelha Mulukuh,
anadhiwelha kuti ari osawara. Apangelha
mmathapa amutekho mkuwara,
mathamakela muhakani wobisala.



Mudhuloh orirya, Mulukuh
wawaka m'matah mwa
Edeni. Mulukuh adhiwera
kuchimwa kwa Adam ni
Hava. Adam
wamukanelha
Hava.



Hava wakakanelha
enowa. Mulukuh
walotaka, "Enowa
niyotembereriwa.
Mwari unorovoriwa
voyara."



"Adam chifukwa
wokichimwelha, ethata
yatemberelidwa ni mika
ni mithula. Unorocha
thuku lokhumela
vankhopeni
vako."



Mulukuh wathakisa Adam ni
hava m'matah mwa Edeni
kambiwa achimwilha,
ahiyana ni Mulukuh
wovaha
moyo!





Mulukuh wapangaka mpeni wa
munlho wothakesa Adam ni
Hava. Mulukuh
ampeangelha
Adam ni
Hava ...





... chikopani cha enama
wawariha. Mulukuh
akusa chikopani
okhumelha
uwi?



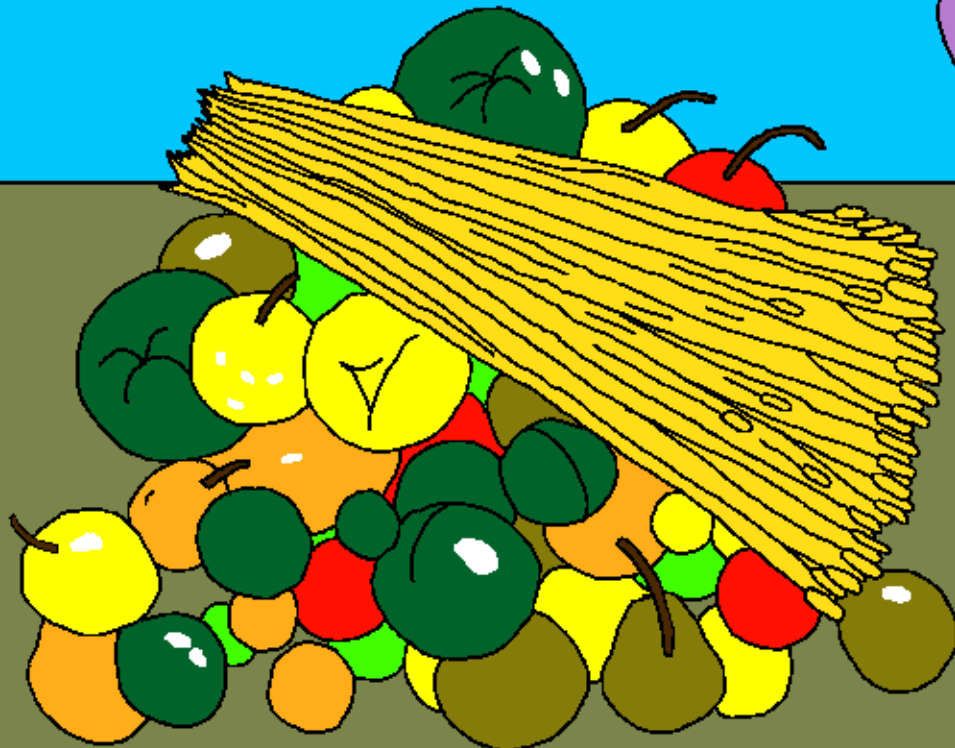
Anamwani ayariwa kwa Adam ni Hava.
Mwana ohamba mdhinaye Kaini, mwana
wa piri Abele. Kaini warhi wokakathah
ethaya pamene Abele warhi
wochiha
nkhosa.



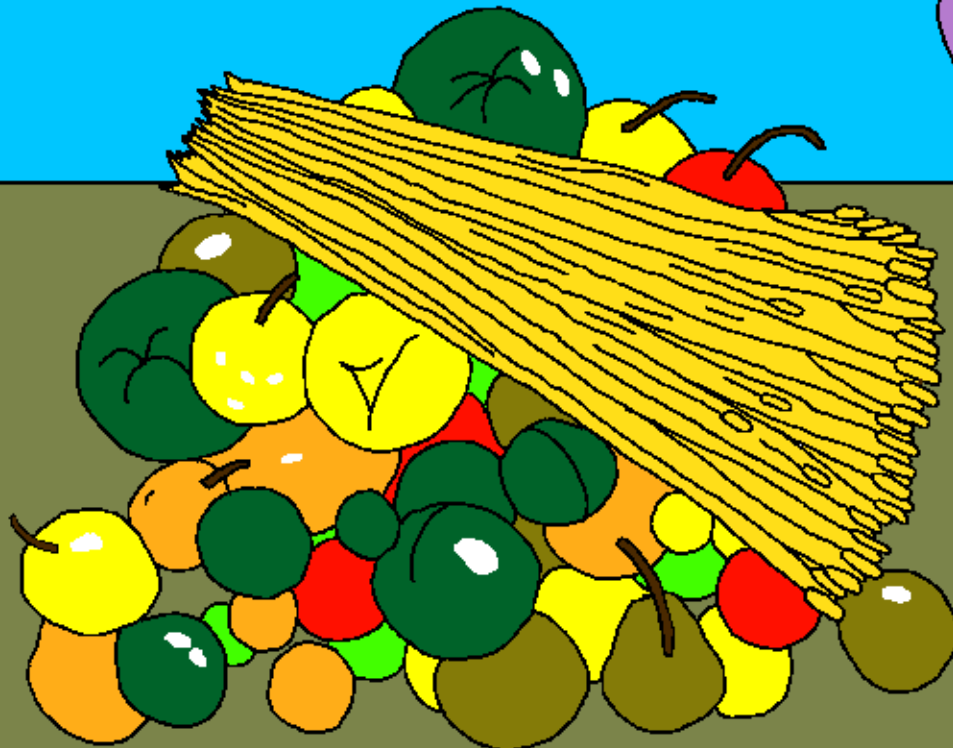
Siku limodha Kaini watukhulah mathapa
kumwimnya Mulukuh (nsembe). Vamene
Abele watukhula mwana wa nkhosa
kumuvaha Mulukuh.



Mulukuh wahihakalalani
mathapa a Kaini. Kaini
wamukwiraka Mulukuh.



Mulukuh walota ni Kaini,
"Wahikhalha wapanga
zinthu zaphama
wahiakheliwa?"



Mkwiyo wa Kaini warhi
chikhalire. Kaini wakakatha
Abele m'baliwa nipaka
wotatheya!



Mulukuh wolotah ndi Kaini,
"m'baliwah Abele aliwuwi?"
"Kaini wanama.



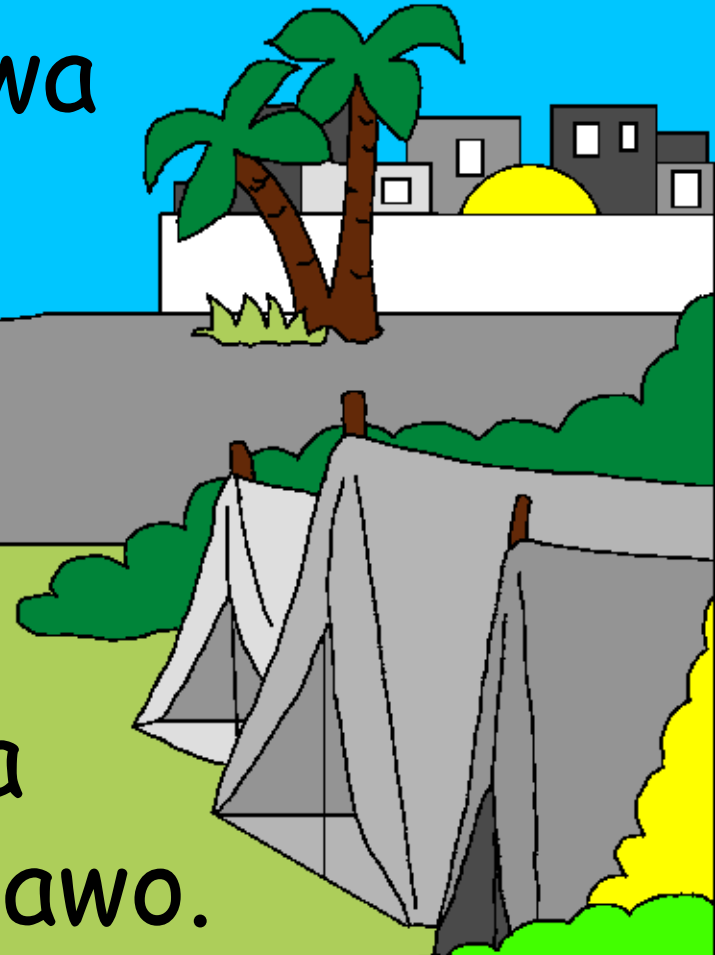
Kokhala womuwehererha nibe
anaya?" Mulukuh wamulakah Kaini
akhale woyetahyetah
Khinadhiwelha.



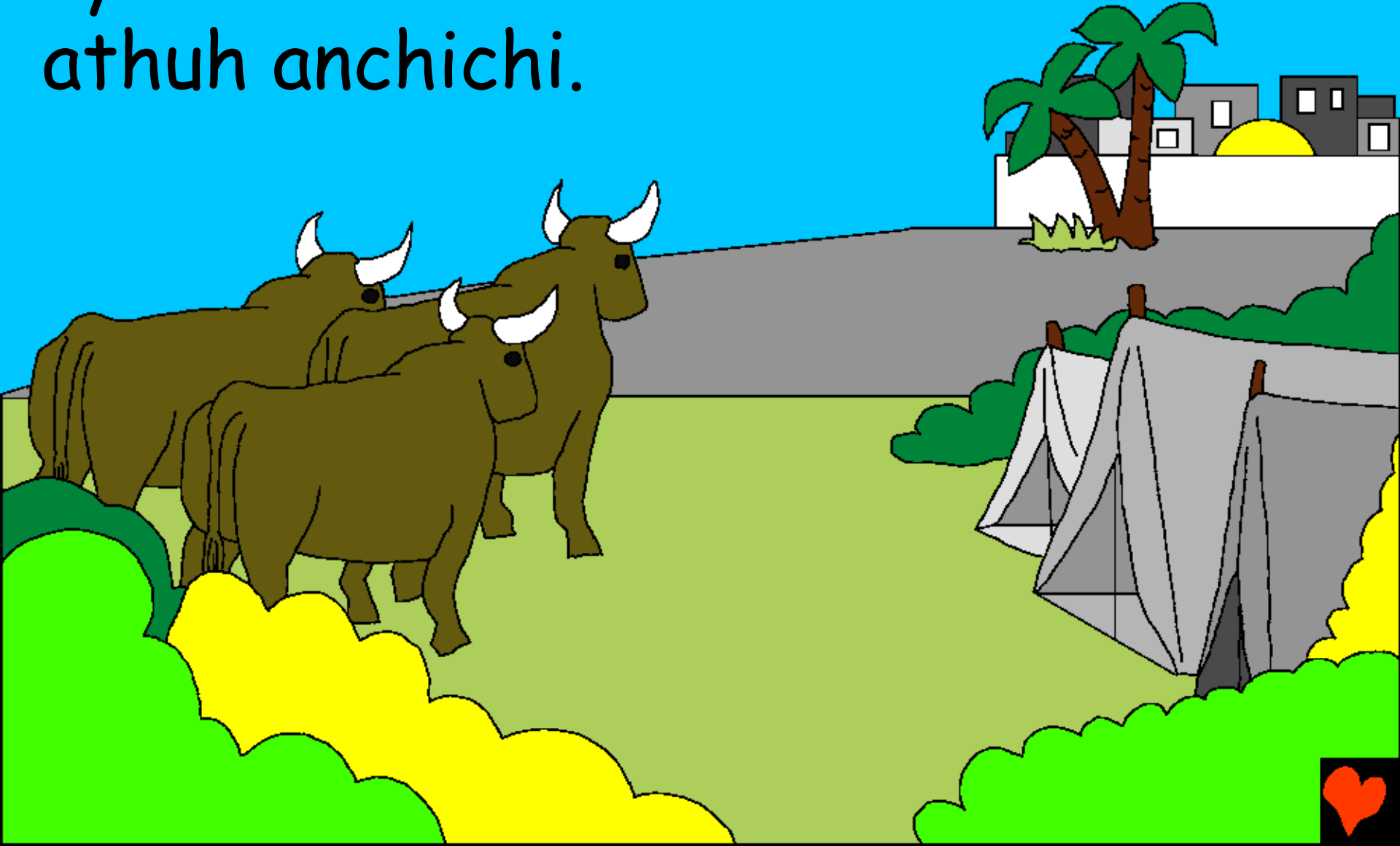
Kainini wavira worekamirha
vamithohni va Mulukuh. Kaini
wathehriwah ni mwana wa
Adam ni Hava



Ayarha
anamwani awo.



Kaini na dhulaye
ayarana nakhala
athuh anchichi.



Banja la Adam ni Hava lakhala
ni athu achinchi. Athuh
m'masiku ayo yarikukha
athawi yorekama.



Vamene mwaniwa Seti wamuyara,
Hava walotah 'Mulukuh
kivaheni seti akhaleh wovira
m'malo wma Abele' ...



... Seti wari muthuh wa Mulukuh
wakhhalalika zaka 912 nayarah
anamwani anchichi.



Mu elhapo, athuh yaakhala ni epewe. Vomalihelha, Mulukuh waganiza zoononga elhapo opweserelani athuh Enama ni mbalame zothene.



Mulukuh wadandaula kambiwa
alheka elapo ya vathih.
Muthuh m'modha warhi
waphama m'mithohni
mwa Mulukuh ...



Muthuh olha yari Nowa. Wovenyera
kwa Seti, Nowa wari muthuh
ohera murima.

Nowaaketakah
ni Mulukuh.



Wa ulelhaka anamwani aye
ohiwera Mulukuh. Mulukuh
walingalira zomuveha
muteko
Nowa!



Kuyambiwa kwa maviho a muthuh

Sohimua iya sa maso a Mulukuh, Baibulo,

emphwanyaneya

Genesis 3 - 6

"Ovolhowa wa mau awinyu anawana
ooneya." Masalimo 119:130



Omaliha



Masu ala ambaibulo
anilela wi Mulukuh ahu oweriasha
onipathunxe onthuna wela nimusueli.

Mulukuh osuela wer la hyo ninapaka itu
sotakala, sinitaniwa itampi. Emphwanhaho
wasoteka okwa, wayeyo Mulukuh onisiveleliwa
ninhuo siso omuluma muwanawe mmosalo, Yesu,
wera okwe vamuikimanho ni othipihe
sotekasaho. Yesu ahiwa mulaponi ni othikela
owanhawe oparaiso. Yuo muamukupali Yesu ni
muamvekela wira oleveleleni sothekasanho,
yowo onimolevelelani. Yowo onowa okale ninhuo
olelo, nyuo munokala niyowo mpaka kalai.



Nyuo muakupali wi eyo
ekaikai, mmulele Mulukwaho:

Osiveleya Yesu, miyo kinikupali weran yuwo
Mulukuh, muhipanka ntoko mutho wira mukwe
muaha wa sothekasaka, vano nyuo muri
mukumito. Shonthe, mvolowe muekuminimuaka
ni mukilevelele sothekasaka, wira myo kikalane
ekumi esa, nihuko nimosi kirowe kikale ninyuo
mpakano kalai. Mukikavihere wira ketheleke ni
kikaleke wanyuwo ntoko muaninyo. Amem

Musome Baibulo ni mulavule ni Mulukuh
mahiko otene! Yohani 3:16

