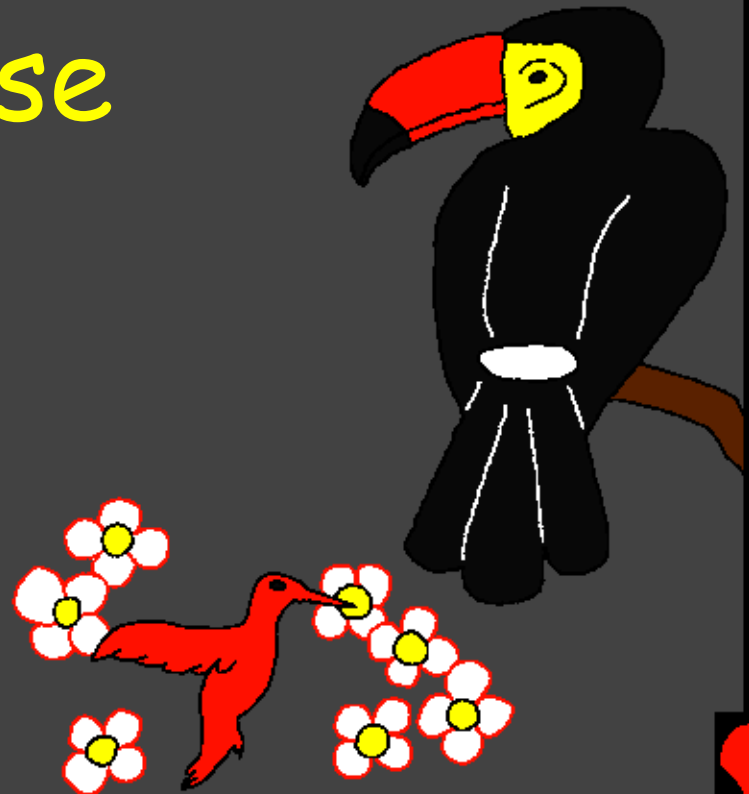
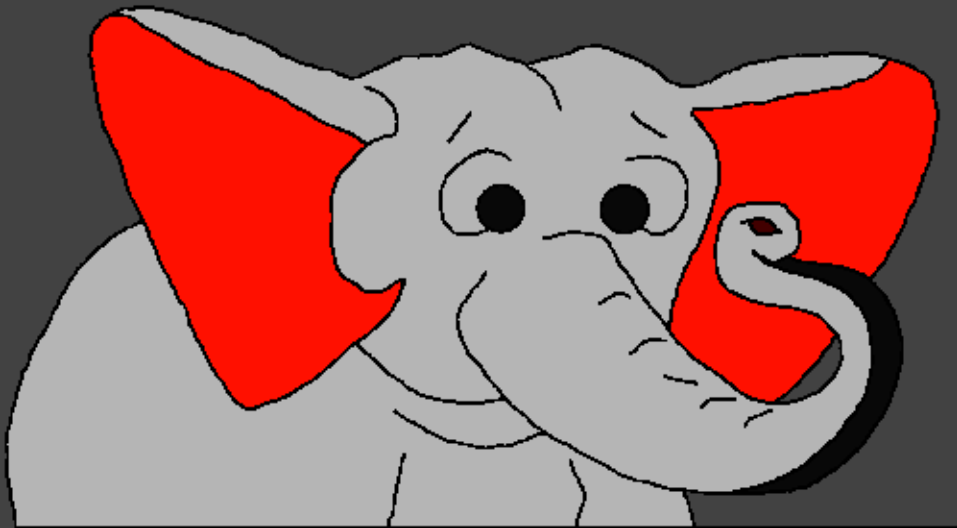


Baibulo na anamwani
Wovelhelha

Yamene Mulukuh
walheka eriose



Wolembiwa ni: Edward Hughes

Umothonyeha ni: Byron Unger; Lazarus
Alastair Paterson

Omukusa ni: Bob Davies; Tammy S.

Wotaphuhela ni: John Kaliwo

Wokumiha ni: Bible for Children
www.M1914.org

©2020 Bible for Children, Inc.


Liasense: Nywoo mokalano ehaki yokusha ni oluwela
sohimuwa seya wohimphakela nakoso.



Watilheka nipani? Baibulo ni madhua Mulukuh analhota momwe muthuh wovenyeriwa miyakha zinchichi za muturi, Mulukuh walekah muthuh ohamba m'dhina aye Adam. Mulukuh walhekah Adam ovenyera ku ethaya. Vamene Mulukuh wamwinya Adam moyo. Adan waziphwanya yekhaye m'matah wokongola m'dhinaye Eden.



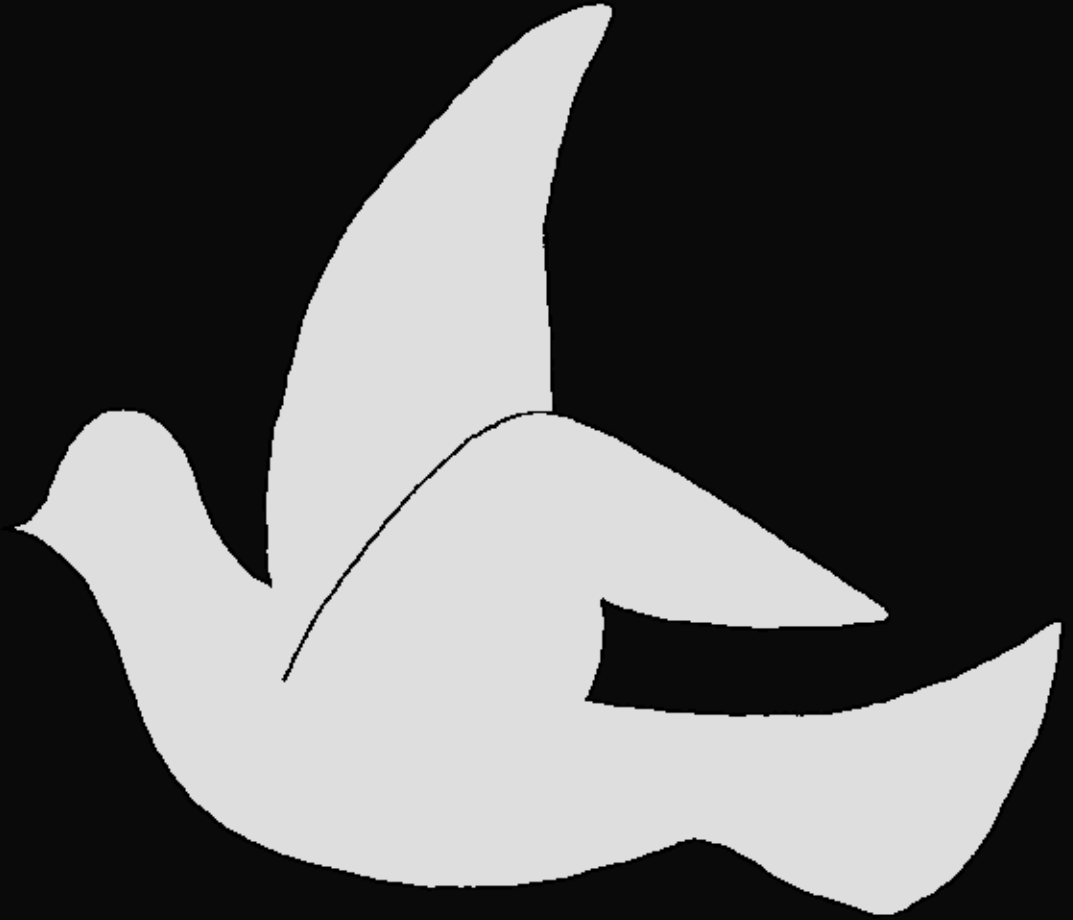
Mulukuh walejah elapo yokongola wovenyera apo walhekah Adam. Vang'ononivang'ono Mulukuh walheka malo otukhmaluwani ophweseramitekho yorekama, mbalame ni njuchi, ekhonozotherenya, esomba za m'madhi.



Mulukuh walhekah enose ya vathi ni mudhuli.



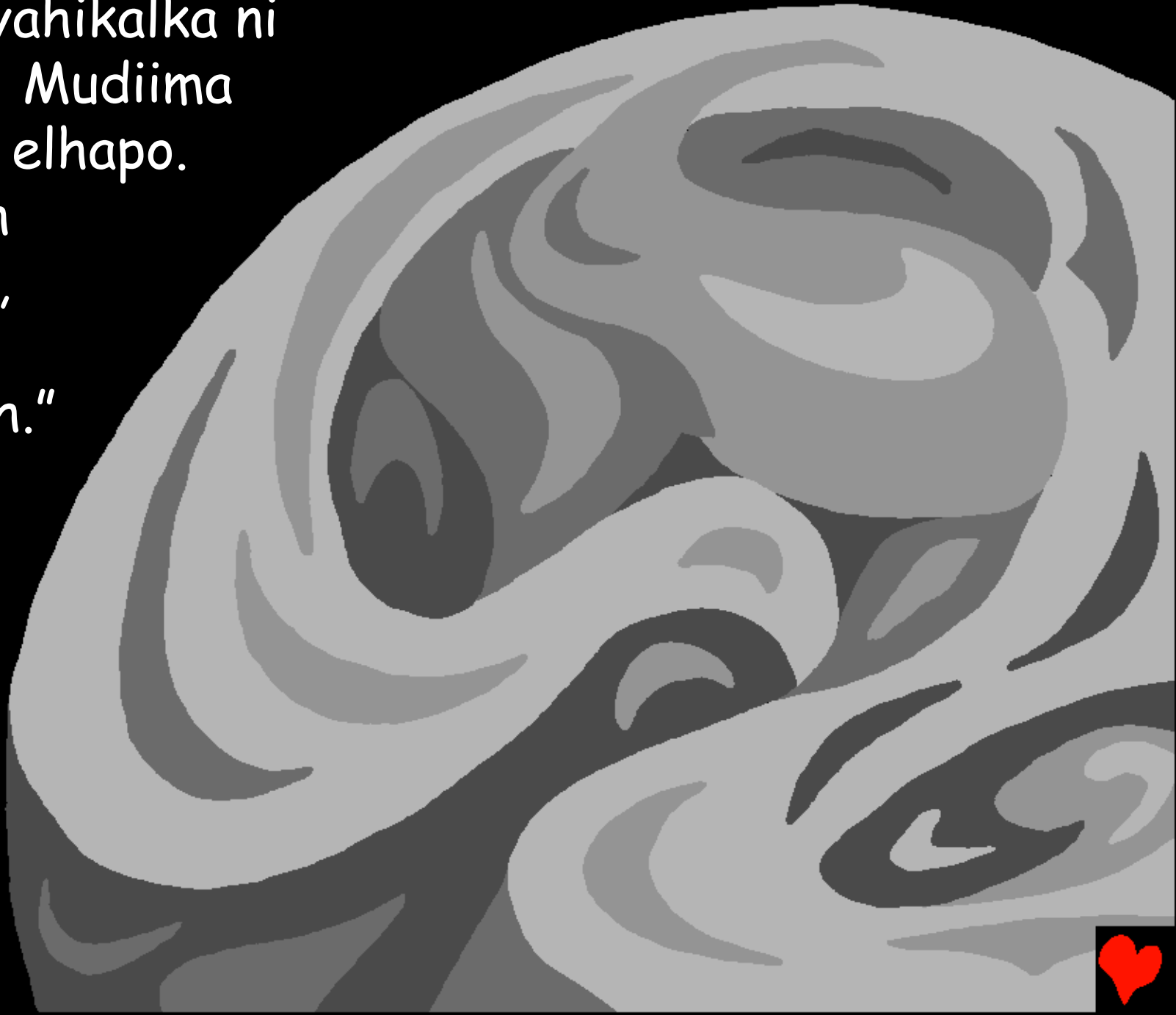
Ohamba wene, elapo
yahikhala ni kathuh,
koma Mulukuh
yekhaye. Elhapo
yalukhala na athu
kapena eriyonse.
Elhapo yahikhala ni
kuwala kapena
mudhuma vadhulu
kapena vathih.
Odhulo kapena
osiselho. Wari
Mulukuh yemwe
wakhala ndi
vohambira.



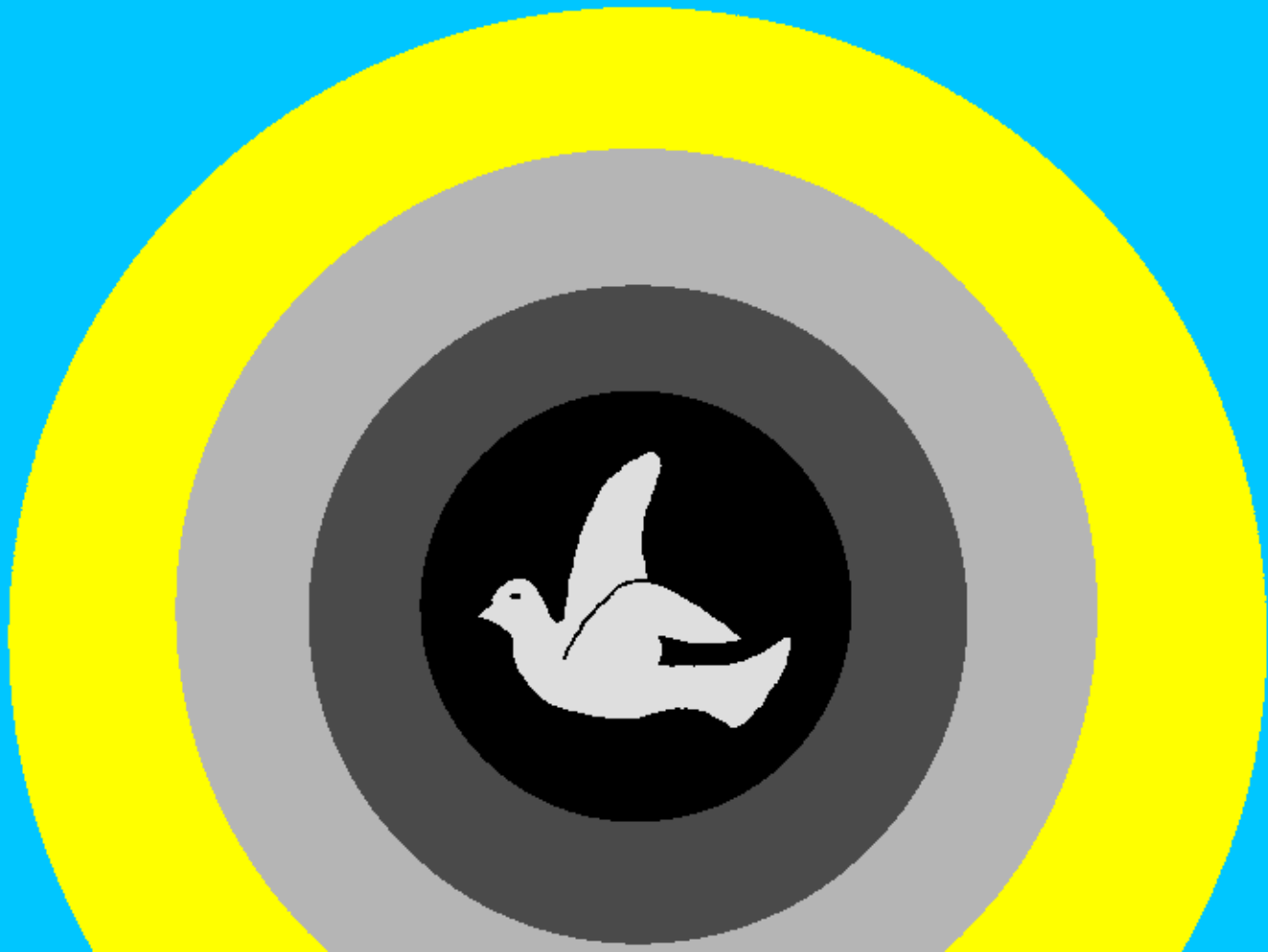
Vohamba Mulukuh,
walheka elhapo yo
odhulu nivathih.



Elhapo yahikalka ni
kathuh. Mudiima
wari mu elhapo.
Mulukuh
walotah,
"woteh
wusewoh."



Woteh waasah, Mulukuh waatcha wosawo siku,
mdiima musikuwa. Waarih mamawani ni
mudhulo wa siku lo haamba.



Siku la piri, Mulukuh waakusa madhi a munyanjani akheleke vamodhi. Vahiure la chitatu, Mulukuh walotaka "ethaya yohauma ikhume" Ethaya yakhuma.



Mulukuh walamulelha manasi, mitekho ni lawani
akhume. Zithu zothene zakhuma.
Warhi m'dhuloni niohinase
wa siku la chitatu.



Mulukuh walheka mdhuwa,
mwezi ndi nyenyezi zinchichi,
muthuh wahiwelhekah. Wari
madhulo ndi ohinase wa
hiwu la siku la chinayi.



Zolhekewa za madhi
asomba ni mbalame zarhi
zapiri kulhekewa. Hiwu
la chisanu, walheka a
somba ni malhuku
oyeva, mbalame
vorekama metoh,
mbalame zoyeva.
Mulukuh walhekah,
somba za mitundu
yothene ni mbalame
zivirha m'mwambani ni
vathih. Yari madhulo
ni ohinase yari
siku lachisanu.



Womalha vavo, Mulukuh walotanso 'Elapo ikhale ndi zithu za moyo. Zithu zohiyanahinahiyana zalekewa, enamah, achenjema, enowa. Amete yotahkhaniwa ni njovu za mpwithih. Ng'ona vo vilivinyuwa ni a pusi aanepa. Enamah za mitundu yo thene yapangiwa, na Mulukuh.

Wari mdhuloni ni ohinase wa hiwu thanu m'chimodha.



Mulukuh waapanga kathu korhorhomeha.

Inthu irionse yarhi m'malo iwa. Warhi chakudya
ni enama. Mulukuh walotakah, 'Timpangele muthuh

m'chifaniziro chathuh'

Alhamulerhe elhapo

ya vathih. MULUKUH

WALHEKAH MUTHUH

MU CHIPHWANIRO

CHA YENE. MU

CHIPHWANIRO

CHA YENE YENE

WALHEKA

MUTHUH ...



Mulukuh
walhotah
kwa Adam, "I
cha zokhumbi
mu matahmu.
Koma waluchelhe
zamutekhoh wa
moyo. Waachaka
zamtekhoola
wakhweleh vavo."



Mulukuh walotah,
kahiyo yaphama muthuh
kukhala yekhaye. Timpangele
womutekeya'. Mulukuh waakusa
mbalame zothene kwa Adam.
Adam wazivzha maina. Mwa
enama zothene, yariwo
yophwanana ni Adam.



Mulukuh
wamukoneya Adam
tulo. Wamuchosaka
a nthuti imodha
kumupangelha
mwariye. Mwariyo
wari wophwana ndi
Adam.



Mulukuh walheka erionse mahiwu thanuni emodha. Mulukuh wadalisa siku la thanu ndi piri, waripanga likhale lo vumurha. Mmathah mwa Eden. Adam ni Hava mwariye, wakahakalalamo nikuvwelha Mulukuh. Mulukuh wari mbuyawo, ni khwawoh.



Yamene Mulukuh walheka eriose

Sohimua iya sa maso a Mulukuh, Baibulo,
emphwanyaneya

Genesis 1 - 2

"Ovolhowa wa mau awinyu anawana ooneya."
Masalimo 119:130



Omaliha



Masu ala ambaibulo anilela wi Mulukuh
ahu oweriasha onipathunxe onthuna wela nimusueli.

Mulukuh osuela wer la hyo ninapaka itu sotakala, sinitaniwa itampi. Emphwanhaho wasoteka okwa, wayeyo Mulukuh onisiveleliwa ninhuo siso omuluma muwanawe mmosalo, Yesu, wera okwe vamuikimanhoni othipihe sotekasaho. Yesu ahiwa mulaponi ni othikela owanhawe oparaiso. Yuo muamukupali Yesu ni muamvekela wira oleveleleni sothekasanho, yowo onimolevelelani. Yowo onowa okale ninhuo olelo, nyuo munokala niyowo mpaka kalai.

Nyuo muakupali wi eyo ekaikai, mmulele Mulukwaho:
Osiveleya Yesu, miyo kinikupali weran yuwo Mulukuh, muhipanka ntoko mutho wira mukwe muaha wa sothekasaka, vano nyuo muri mukumito. Shonthe, mvolowe muekuminimuaka ni mukilevelele sothekasaka, wira myo kikalane ekumi esa, nihuko nimosasa kirowe kikale ninyuo mpakano kalai. Mukikavihere wira ketheleke ni kikaleke wanyuwo ntoko muaninyo. Amem

Musome Baibulo ni mulavule ni Mulukuh
mahiko otene! Yohani 3:16

