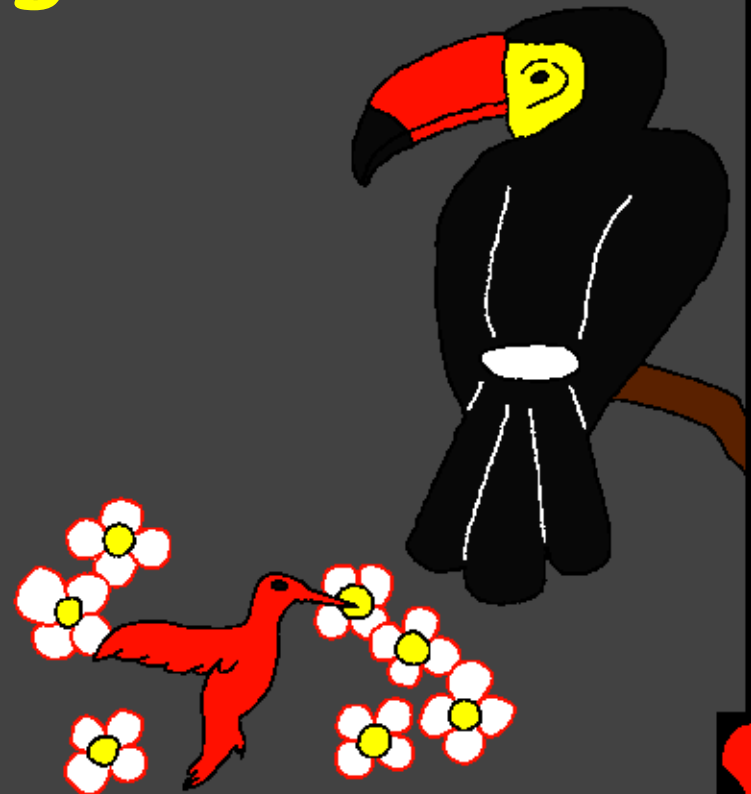
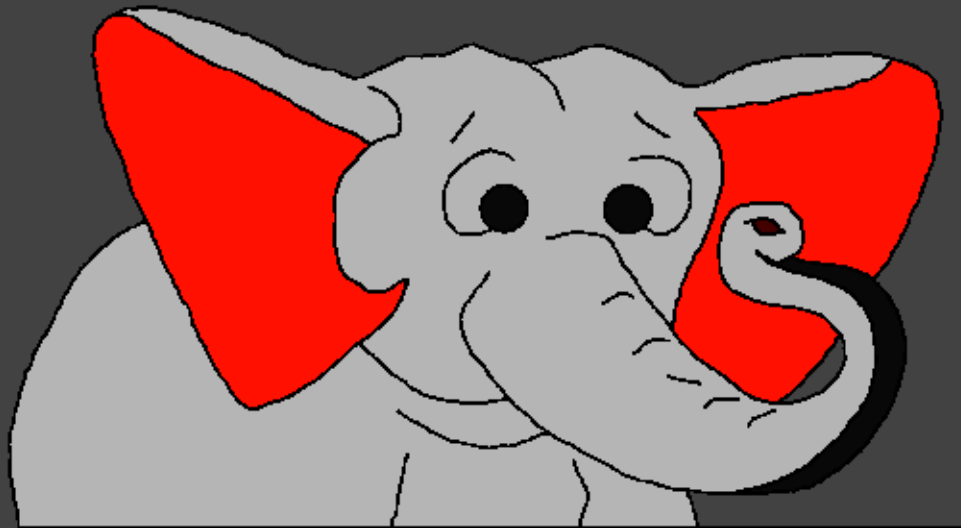


Bibula wa Bana
bya kyabutu

Leza Ulonganga
Byoso



Bilebwa bya dikile ne: Edward Hughes

Bilomboji bya: Byron Unger; Lazarus
Alastair Paterson

Bishitwe ne: Bob Davies; Tammy S.

Bishitulule ne: www.christian-translation.com

Bilonge ne: Bible for Children
www.M1914.org

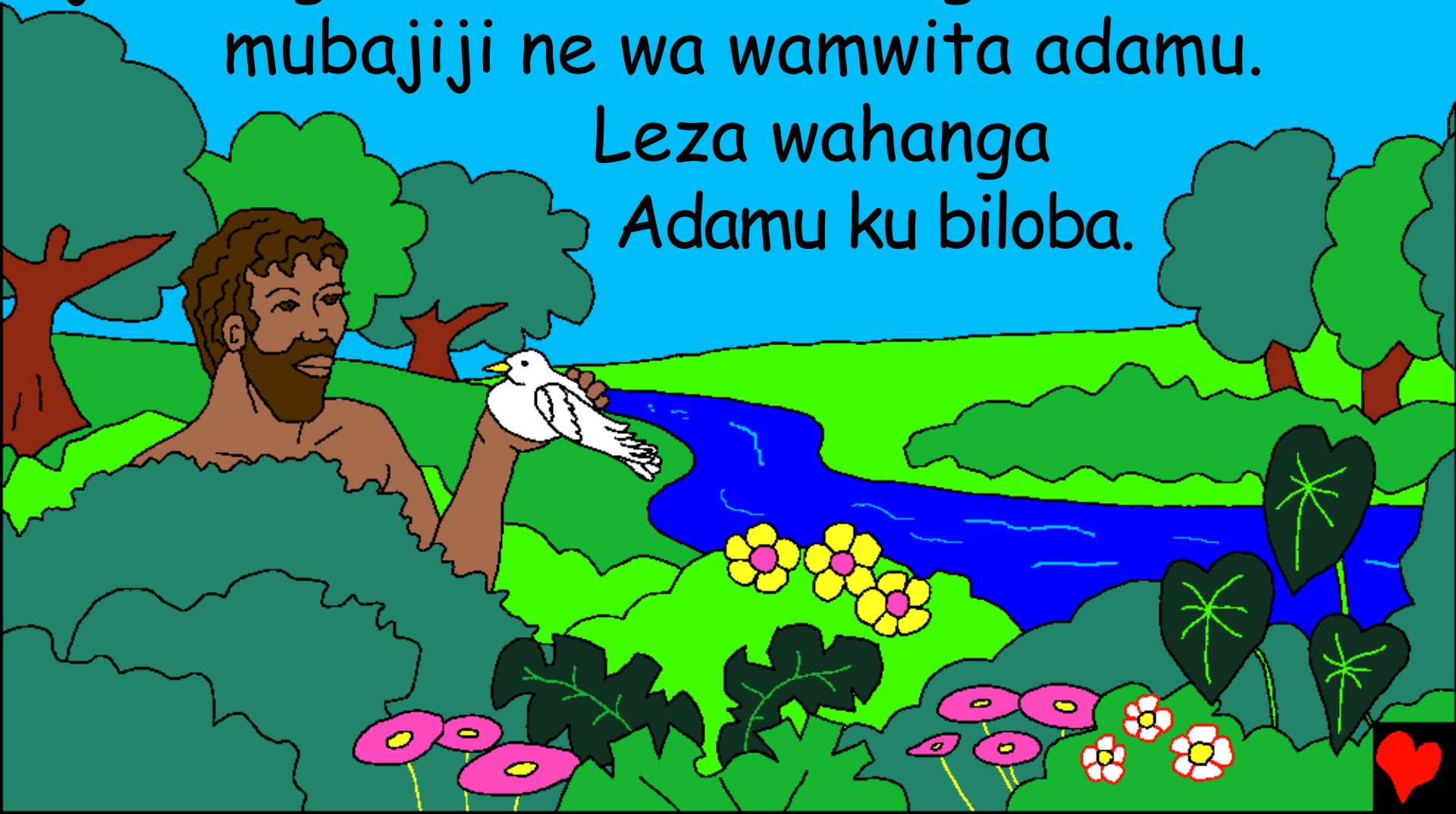
©2021 Bible for Children, Inc.

Licence: udi ne luhusa lwa kukobola ne kutabija bino bilebwa
ne bibaije ko ki bihoteja.

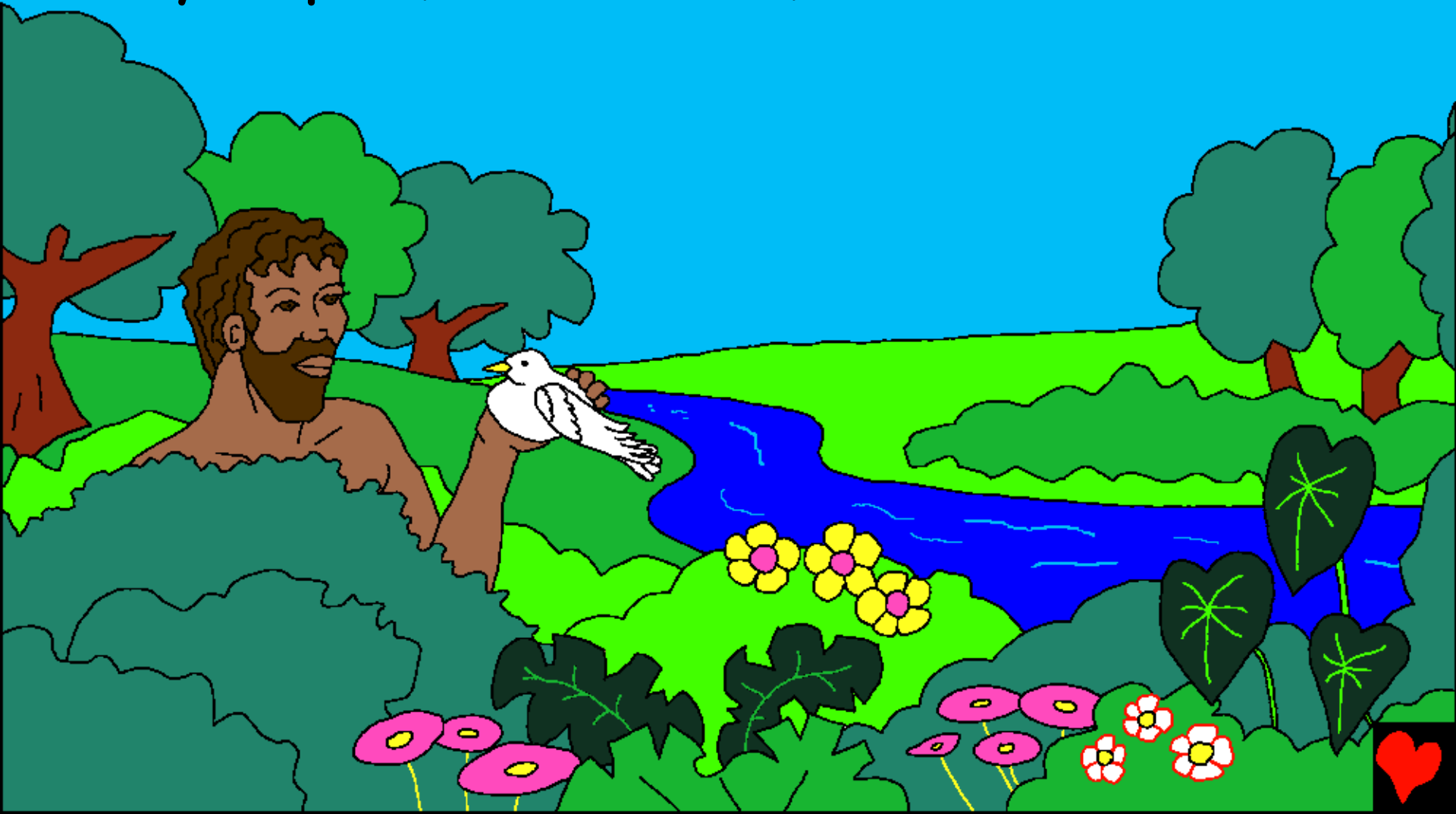


Anyi wituhangile nga? Bibula dji wi dja
Leza di unena neki muzo wa muntu wa
ajile. Ngalwilo, Leza wahanga muntu
mubajiji ne wa wamwita adamu.

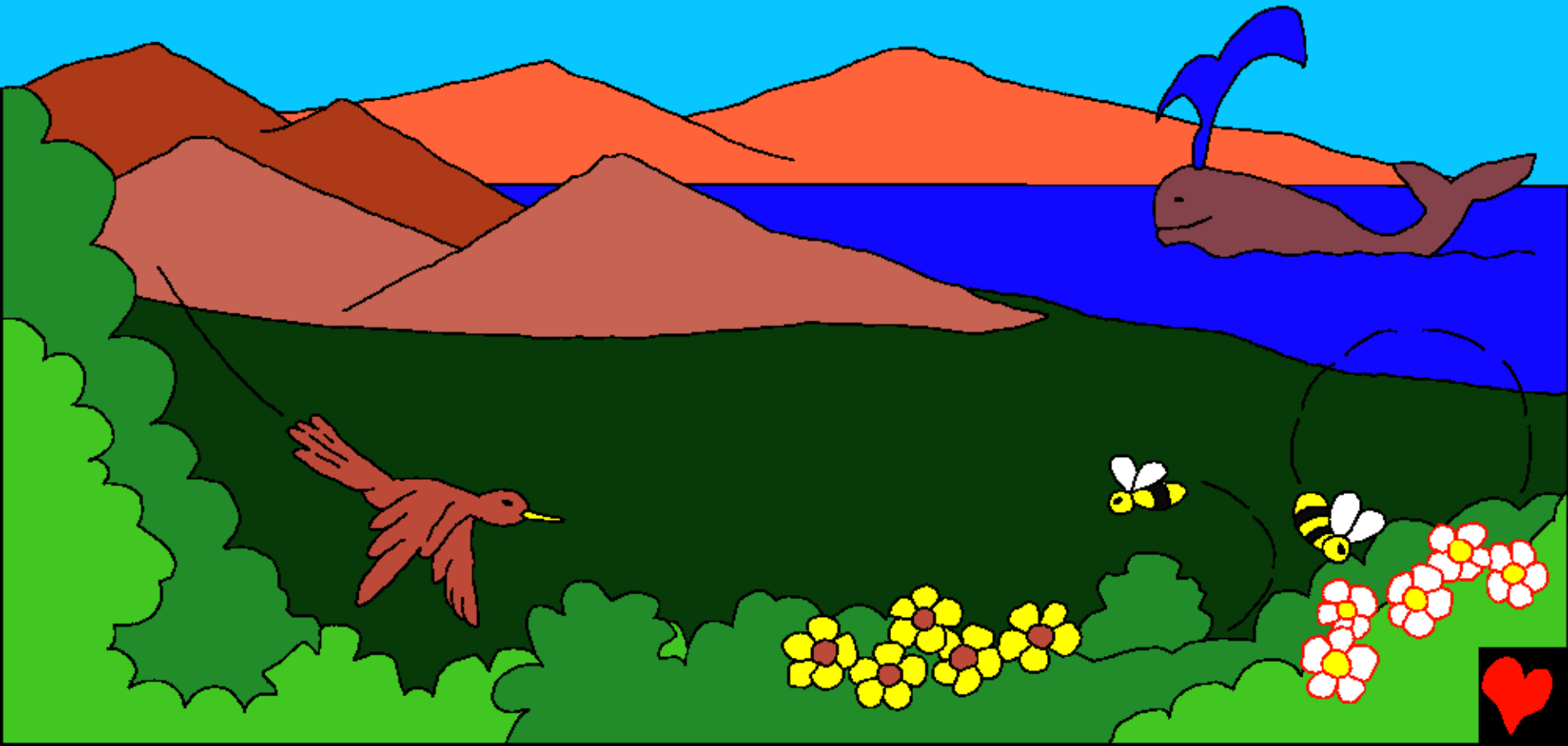
Leza wahanga
Adamu ku biloba.



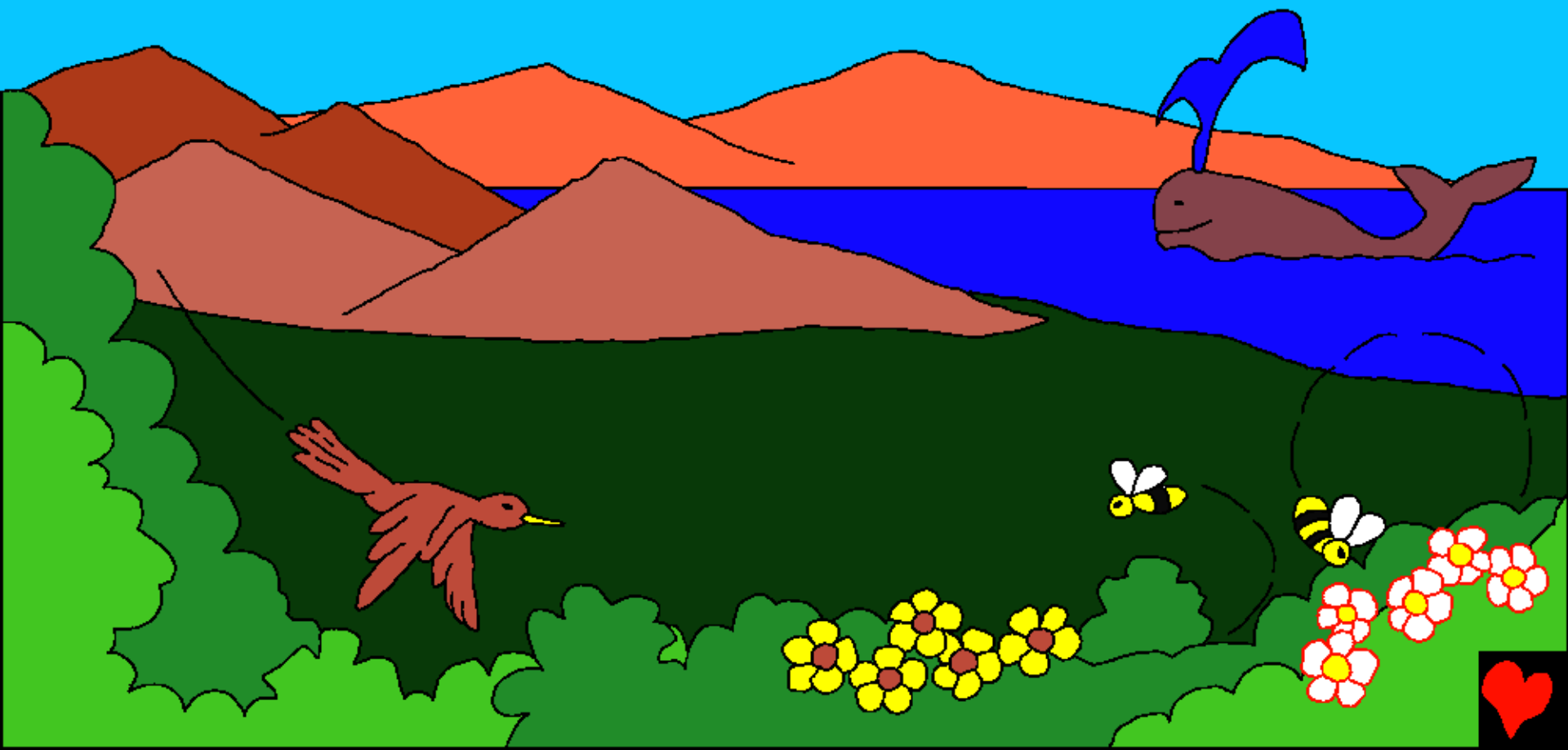
Hano Leza wa hehula muya mwa Adamu,
wa ikala ne mbubi. Witana mu mbudimi,
mbuyampe (bulubuluke) bwitwa wi edena.



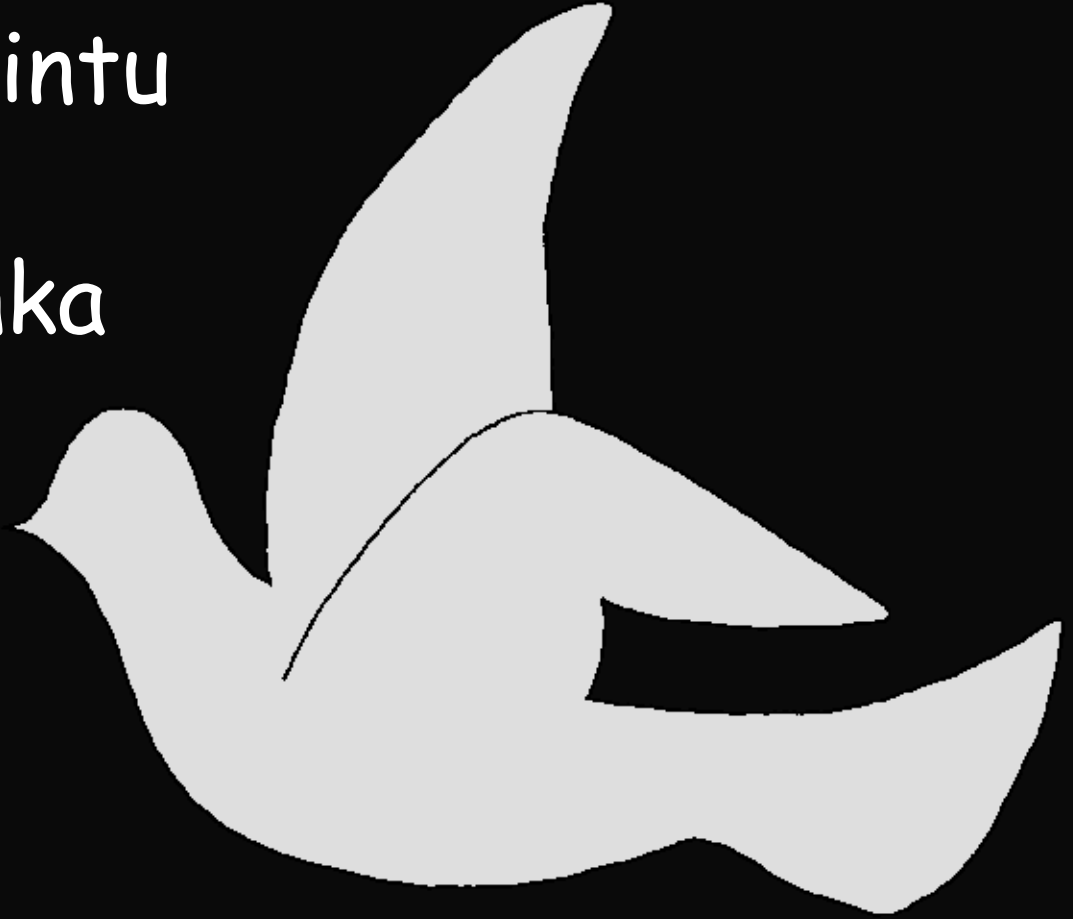
Kubajiji Leza kwa kuhanga Adamu, wa
hangile tanda milubuluke, ne bintu
biyampe pata. Kintu ha kintu Leza
wahanganga ne ngulu, ...



... ne maluba a luvumba ne tonyi twa ma
couleurs vives, ne ba nyuki badjilanga,
ba baleine ne banyonga base nena.



Kungalwilo kupala kwa
Leza ka hangile kintu
nasha kimo, ke
kwadihokintu kenka
Leza. Kutuhu
bantune ma
mafwashi nasha
bintu kutuhu.



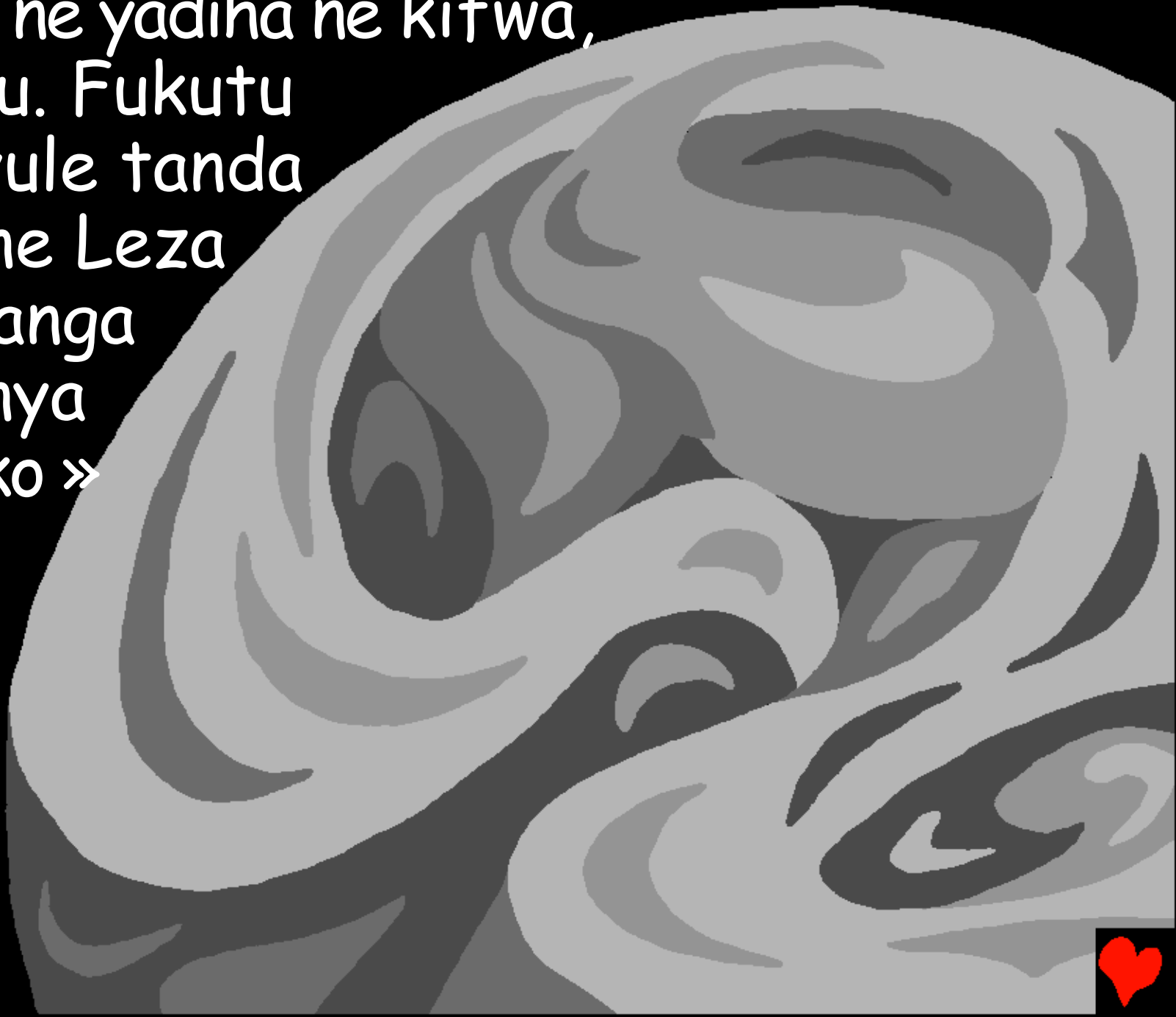
Kutuhu nasha mwinya ne
kutuhu fukutu ne
bya mulu, na bya
hashi kutuhu nasha
kesha djahishile
nashakesha.
Kwadi kenka
Leza aye mwine
kutuhu ngalwilo.
Nehano Leza
ahita ku kilongwa.



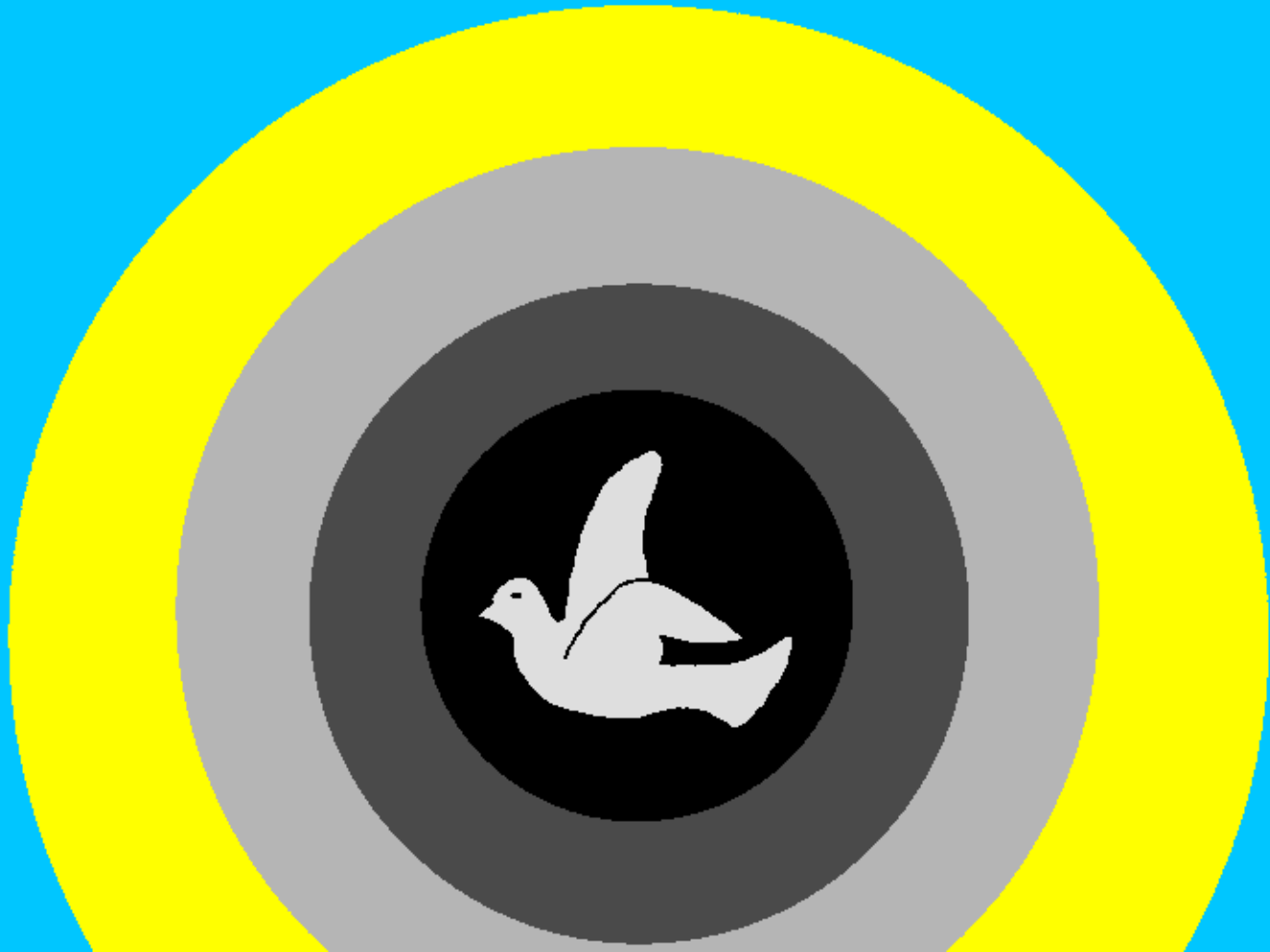
Kubajiji, Leza wahanga
mulu ne tanda.



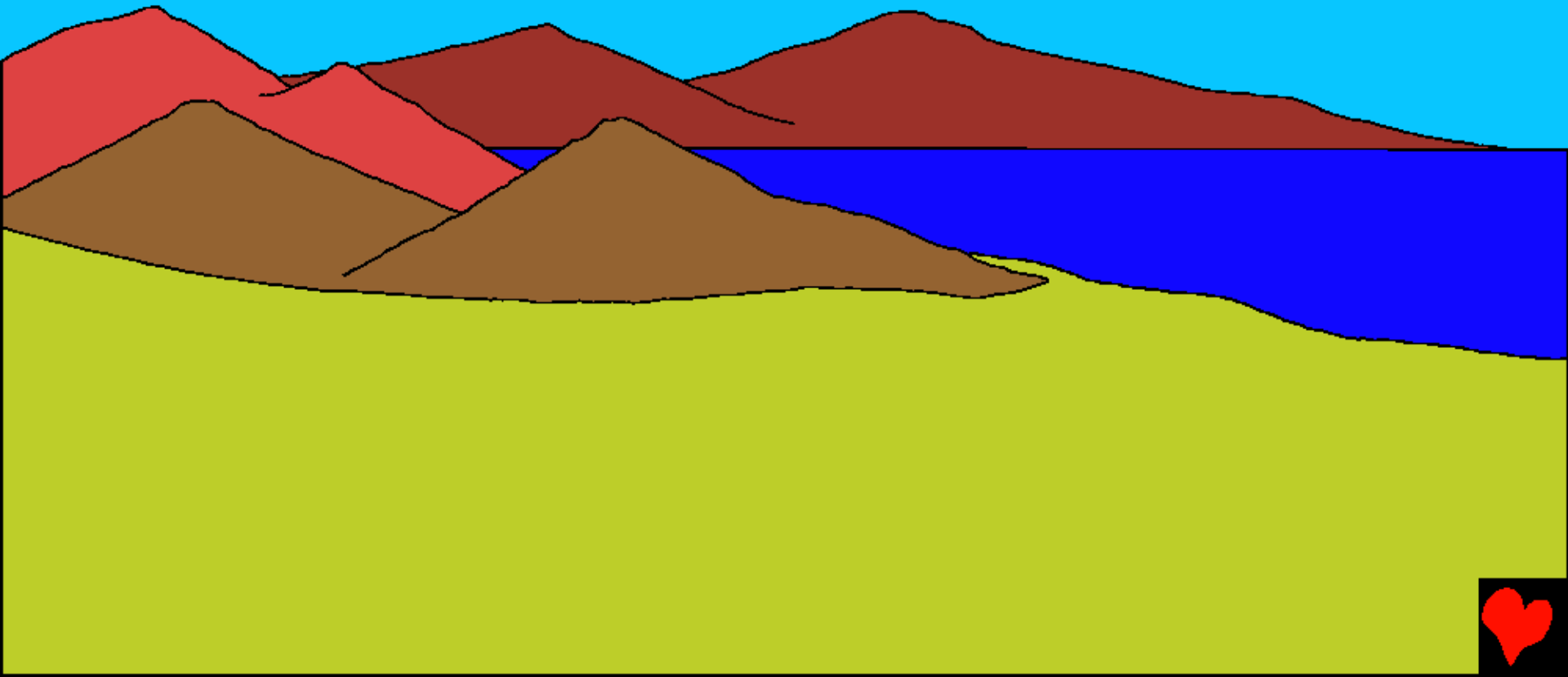
Tanda ne yadiha ne kifwa,
mutuhu. Fukutu
yadi iyule tanda
yoso, ne Leza
wanenanga
« mwinya
wikaleko »



Ne mwinya waikalako. Leza waita
mwinya djifuku ne fukutu bufuku ne
kyolwa ne nyasha yadi difuku dji bajiji.



Difuku dya bubidi Leza wahanga kalunga
kamema, bijiba ku bukano butaba mulu.
Dituku dya busatu Leza wanena :
« Tanda yume » ne tanda ya uma.



Leza wanenanga kubiyombo, maluba, mishi
mikatatampe, ne mishi idiko, nayo ya
tamba, ne kyolwa ne
mulubanga (nyasha)
dya hita.

Ke dituku dya busatu.



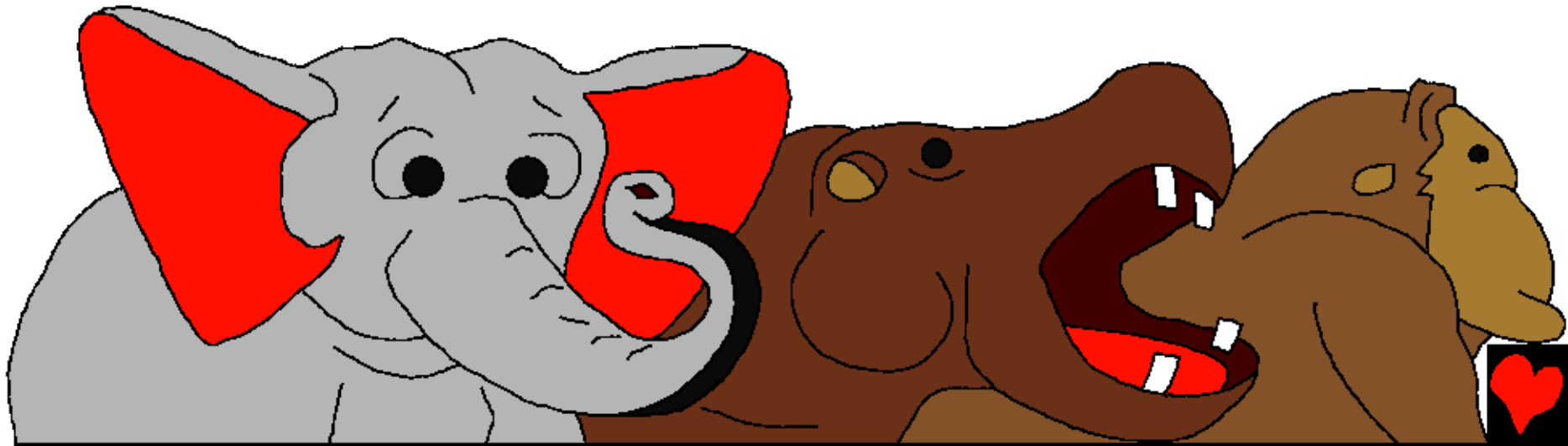
Kwa Leza wa hanga djuba, ne kweji
ne mitonganyika yoso muntu
kakojeja ho kwi ibala.
Kwa iya bufuku ne dji
fuku. Dituku djina.



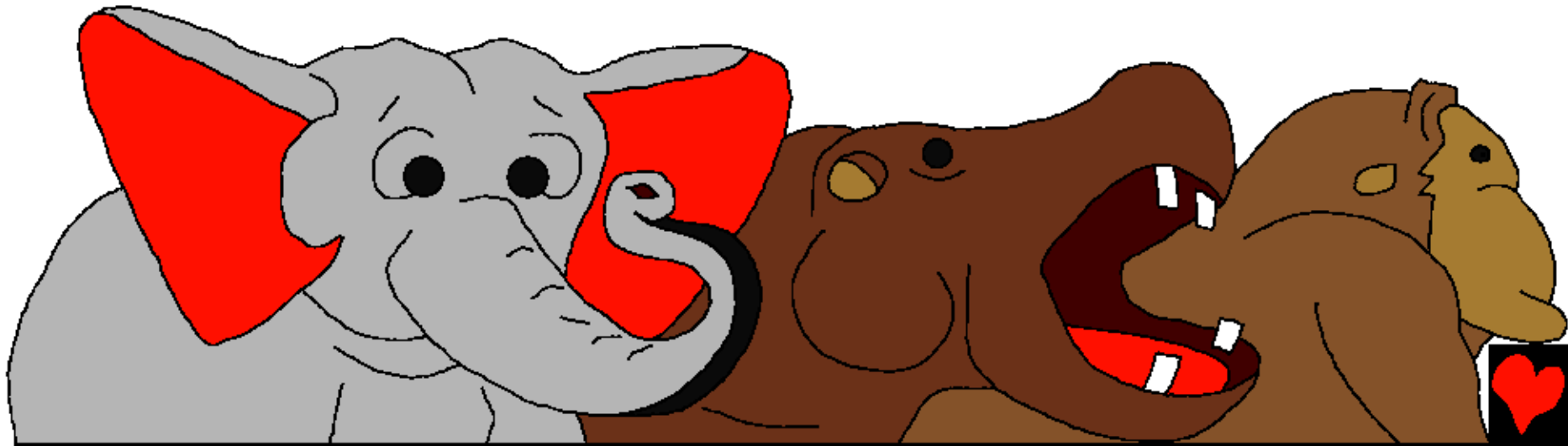
Ne mishiha ya munena
ne tonyi twadikala ku
mukada ukwabo.
Kudifuku dja
butano, wahanga
mishiha ikatampe ne
ndakala mishemishe,
Autriches ya mikozo
ilape ne sangaji
tusheshe.



Kwa byabyobi, Leza wanena kadi : « ne tanda iyule bihangua bidi ne bumi ... »
« ba nyama bosso ne bishi bya ndelanga mudi vumo bidi ne bumi. Kwa hikala ne baholo, ba mpuya madimuke, ne ba ngandu, ne bishi binyonge ondulés, girafes ne bapusu, nyama wa muzo oso ba muhangile kwa Leza djubadja.



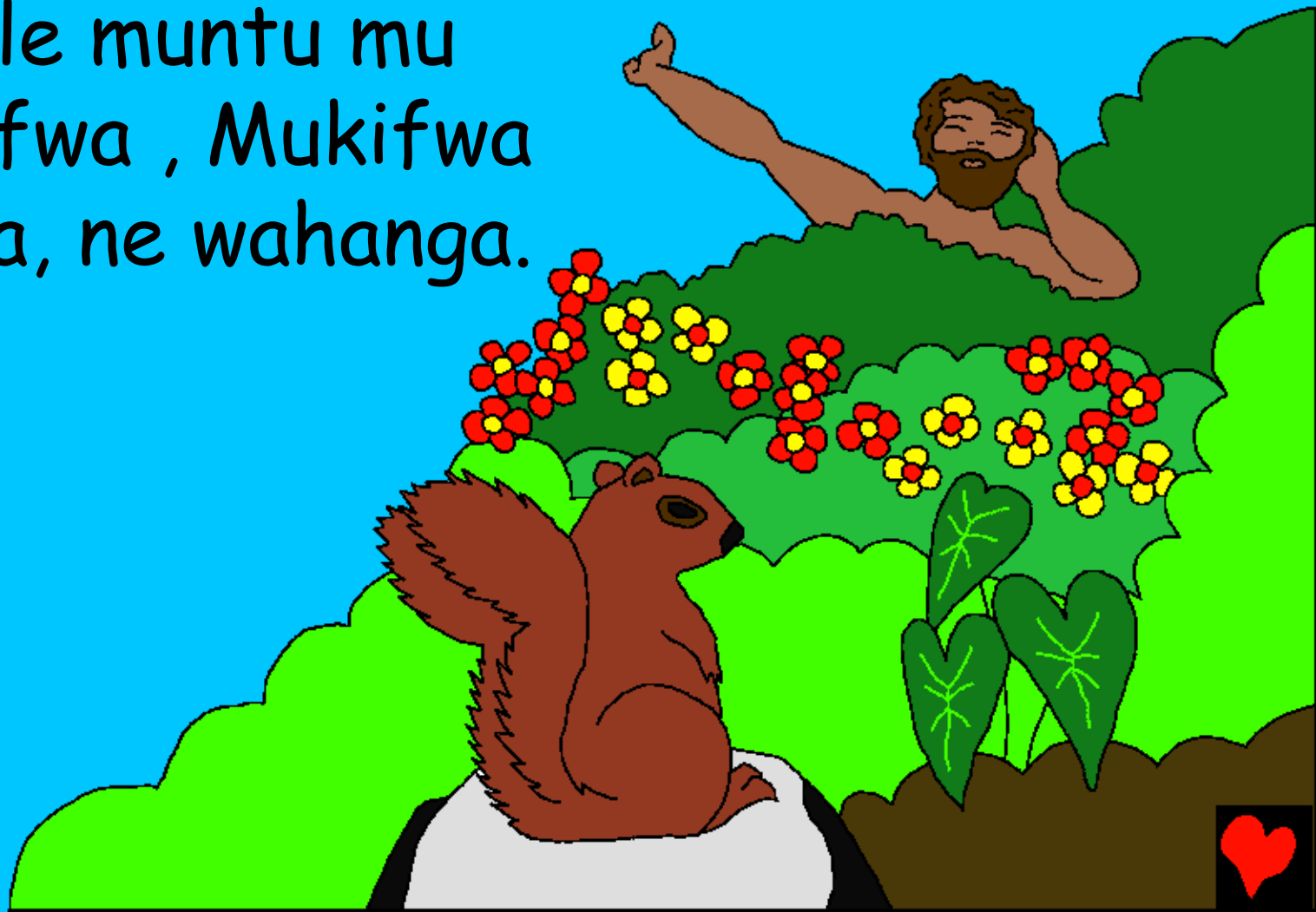
Kwa ikala bufuku ne nyasha,
dya ikala dituku dya busamba.



Leza walonga kintu kikwabo mudifuku
dya busamba - kintu kikwabo kya buleme
pata. Bintu byoso biadi ke bilongole kala
mwanda wa muntu.
Kwadi bya kudja mu
madimi ne banyama
mwanda muntu
ebingidile.



Naho Leza wanena « tulonge muntu mu
kifwa kyetu ne ikale ne diwi ku bintu
byoso bya ha tanda » kunenanga Leza
wahangile muntu mu
kyadi kifwa , Mukifwa
kya Leza, ne wahanga.



Leza wanena ne
adamu « djanga
bintu byoso bidi
muno mu budimi,
ko kidja mushi,
uyukile biyambe
ne mbimbi. Shi
ubadji ku uno
mushi, ufwanga. »



Leza wanena : « ke biyampe po muntu ekale aye mwine ka mulongela mukwashi.» Leza waselela adamu tonyitoso ne banyama.



Adamu wibabila majina. Wadi ne ngenyi
pona ko longa bino. Mubano banyama ne
tonyi ke kwadiho nashakintu
kimo kya mufwenene Adamu.



Leza waladika Adamu mutolo, wa mu talula luhavu lumo ne walonga mukaji ku panvu yadi. Mukaji wahangilwe ne Leza ekale mu longayi wa Adamu.



Leza Wahanga bintu byoso mu
mafuku a saba. Leza wa esela
djese difuku dya mbusabe bubidi
ne widinemeka.



Mwanda dikale difuku dya kukokolokwa
mu budimi bwa edena, Adamu ne Eva
wadi mukaji badji mbumi bulubuluke
bwa kukolela Leza. Leza wadi
wambo Leza, wi babi langa
ne mulunda wabo.



Leza Ulonganga Byoso

Lusango Iwa binemwa bya Leza
bibula,

ibitanyinwe mu

Ngalwilo 1 - 2

"Tweja byobe bishima bilububuke."
Nyimbo ya mitoto 119:130



Kufulo



Bino bifudwa bya mubibula bi tunenenawetu
leza muyampe wituhangile ye usaka tu
muyuke.

Leza uyukile twalongele bitu bibi, bino bya
itambubi, kufuta kwa mbubi i lufu, aye leza
mumusweswe wa tumine wadi yesu, wabuka
afwe ku mubalamba mwada twabenu bubi.

Nano Yesu Kudishitu wiya ku bumi
wananguka ende mulu! Shi mu mwitabijanga
shi mudinelwitabijo mua yesu kidishe tumu
lombeko etufevile musa mwada wa bubi
bwenu! Uka longanga, ukeyanga ne
ukekalanga nobe liano, ne ukekanga ne bumi
bwa nyeke ne nyeke.



Shi mudi ne lwitabijo bya bino bitu ibya
binebine, nenai nekikwa leza :

tata yesu , na itabijanga udi leza, ne wa ile
wi muntu kwitu fevila mwada wa bubu
bwami, ne ha oukone bumi, fevileko lusa
iyanga nu bwami bumi mbupia, ne jumba dji
kwabo tu kashika tanga nobe nyeke ne
nyeke. Kwa sheko kuneneke abewa Leza ne
kushikate nobe kenko wi obe mwana kabuki.
Amena.

Soma (tanga) bibula ne unene ne leza ma
fuko oso! Yowano 3:16

