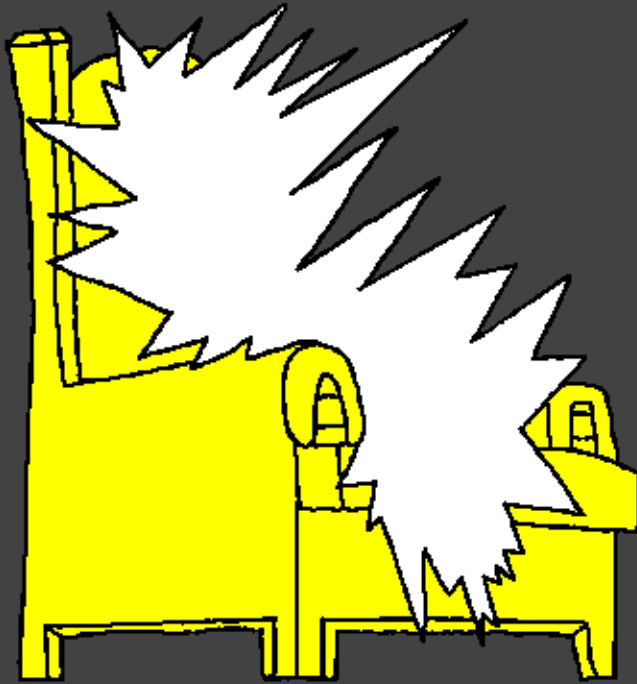


Ebibilia ye babana Yokesia



Mwikulu nio
engo
esimisia wa
Wele



Yaandibwa nende: Edward Hughes

Yokesebwa nende: Lazarus
Alastair Paterson

Yabukulibwa nende: Sarah S.

Yakalukhasibwa nende: Nicodemus Wokuri

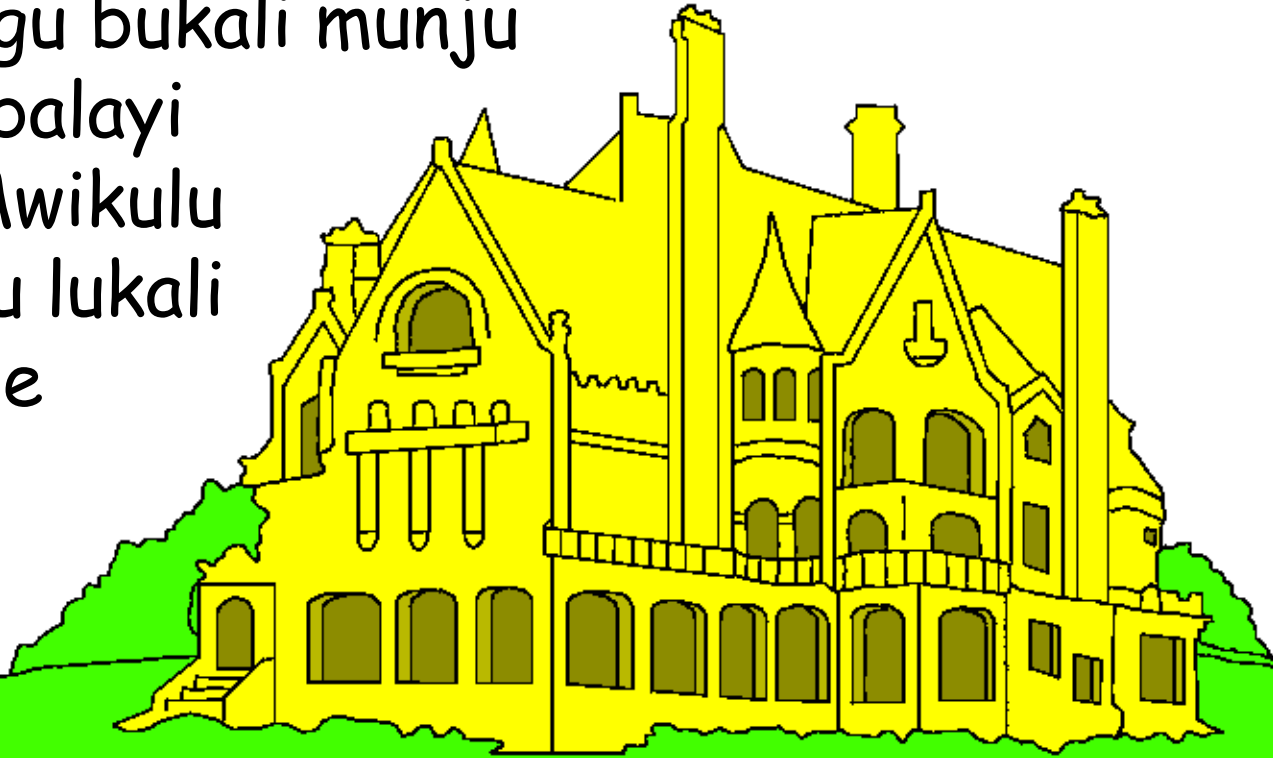
Yarusibwa nende: Bible for Children
www.M1914.org

©2020 Bible for Children, Inc.

Khufukiliwa; Ewewe oli ne bung'ali bwe khurusia namwe
oandike lukano luno, neba mbo sio lakusia tawe.



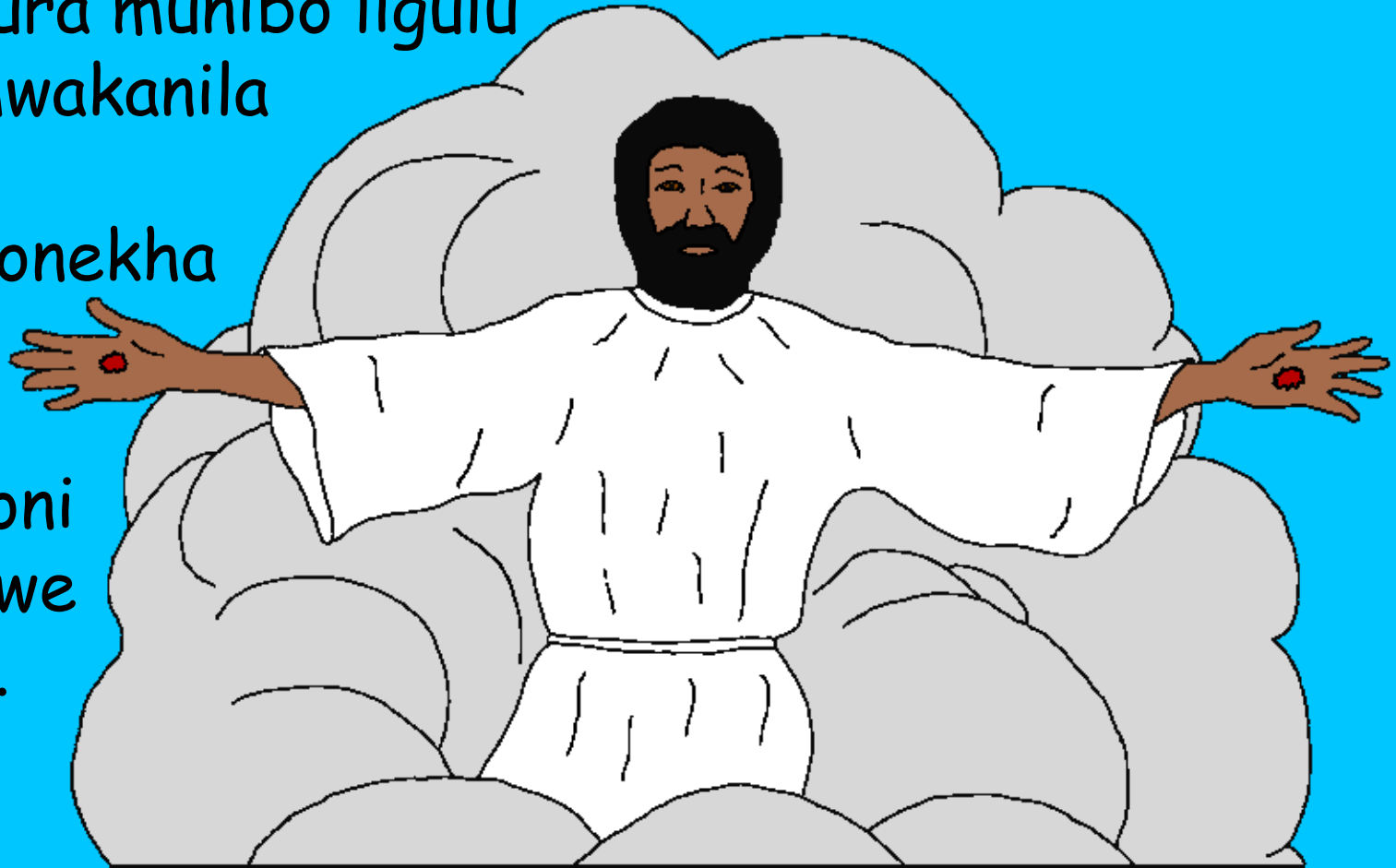
Nga Yesu ne amenyanga musibala babeeka barumwa kaboleta bewe khulondekhana ne mwikulu. Alangalanga likulu ali Enju ya paapa lundi aloma bulimo bubweyangu bukali munju emboofumala embalayi esiimisia engo. Mwikulu mubalaayi mumiliu lukali khukhil chingo che musibala muno.



Yesu ababolela ali ndikhenja khumung'onela
bubweyangu ne kaba bali, ekha kobole lundi
emwakanile ewange samwene. Yesu kaacha mwikulu
lwanyuma lwe khukhwinyukha kukhwama mubafu ta.
Nga babeeka bewe balolelela nga Yesu nabukulibwa
khurura munibo ligulu

lya mwakanila
mala
khubonekha

lundi
mumoni
chabwe
tawe.



Khukhwamila aoo basuubili bakhebulila nga kabalaka
ali alikobola Yesu nio aloma ali ndikobola mubukule.

Yesu aloma ali ndicha nomukhanya tawe, nga
mbao awunindile ta, ne basuubili bafwa na
akhakobola? Ebiblia ebola eli
bacha bulungifu khumenya
nende Yesu. Khutambao
mumubili, nikhwo
khuba nende
Omwami.

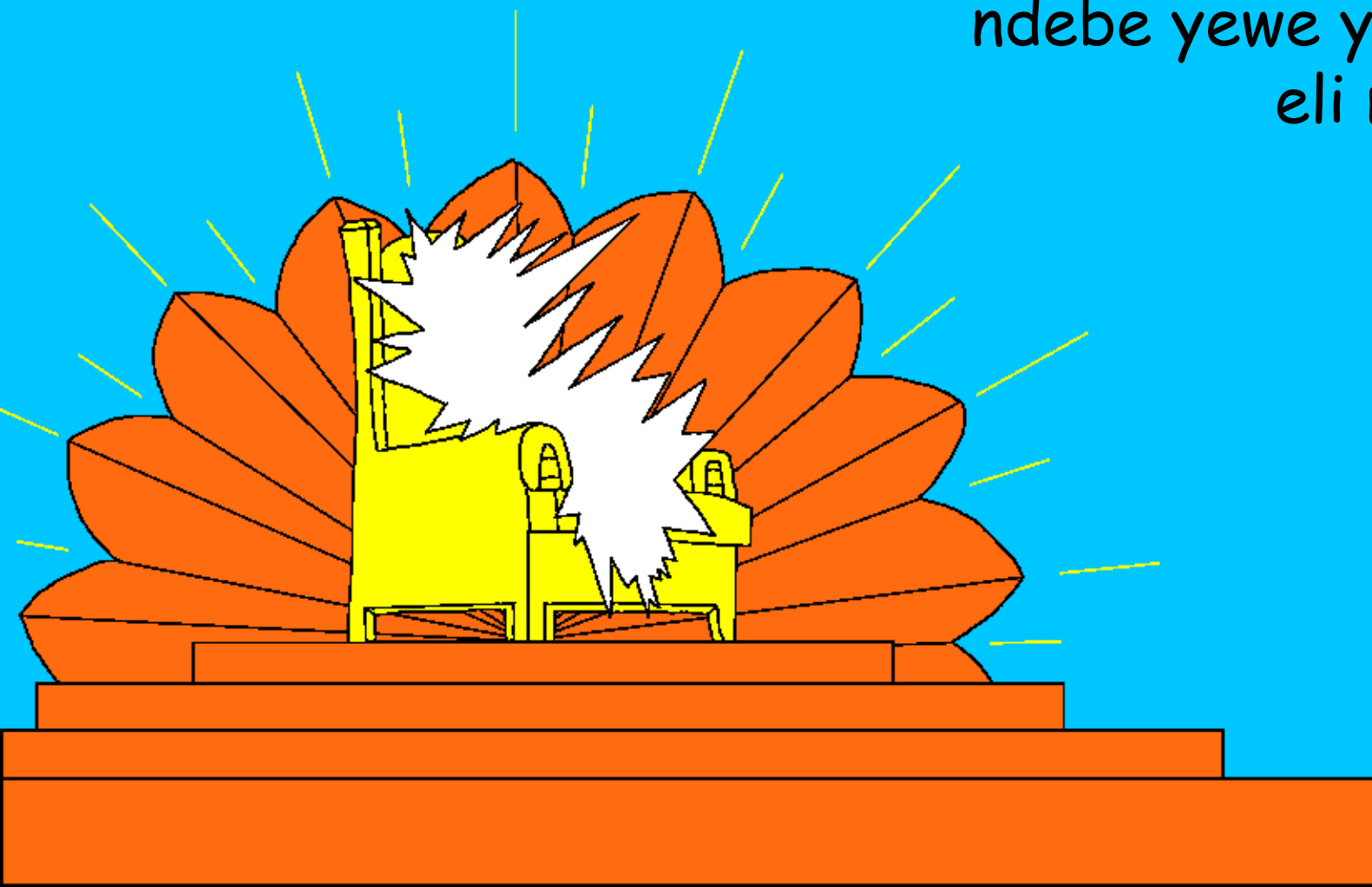


BIANIBWA
NENDE OMWAMI



Lifunulwa nisio sitaabu simalilisi mubibilia
sikhubolela khuukia khwe likuli nga nelili. Sili sibofu
lundi siekhuukia, sili mbo. Likulu eli engo wa Wele.

Wele ali buli abundu ne
ndebe yewe ye buruki
eli muukulu.



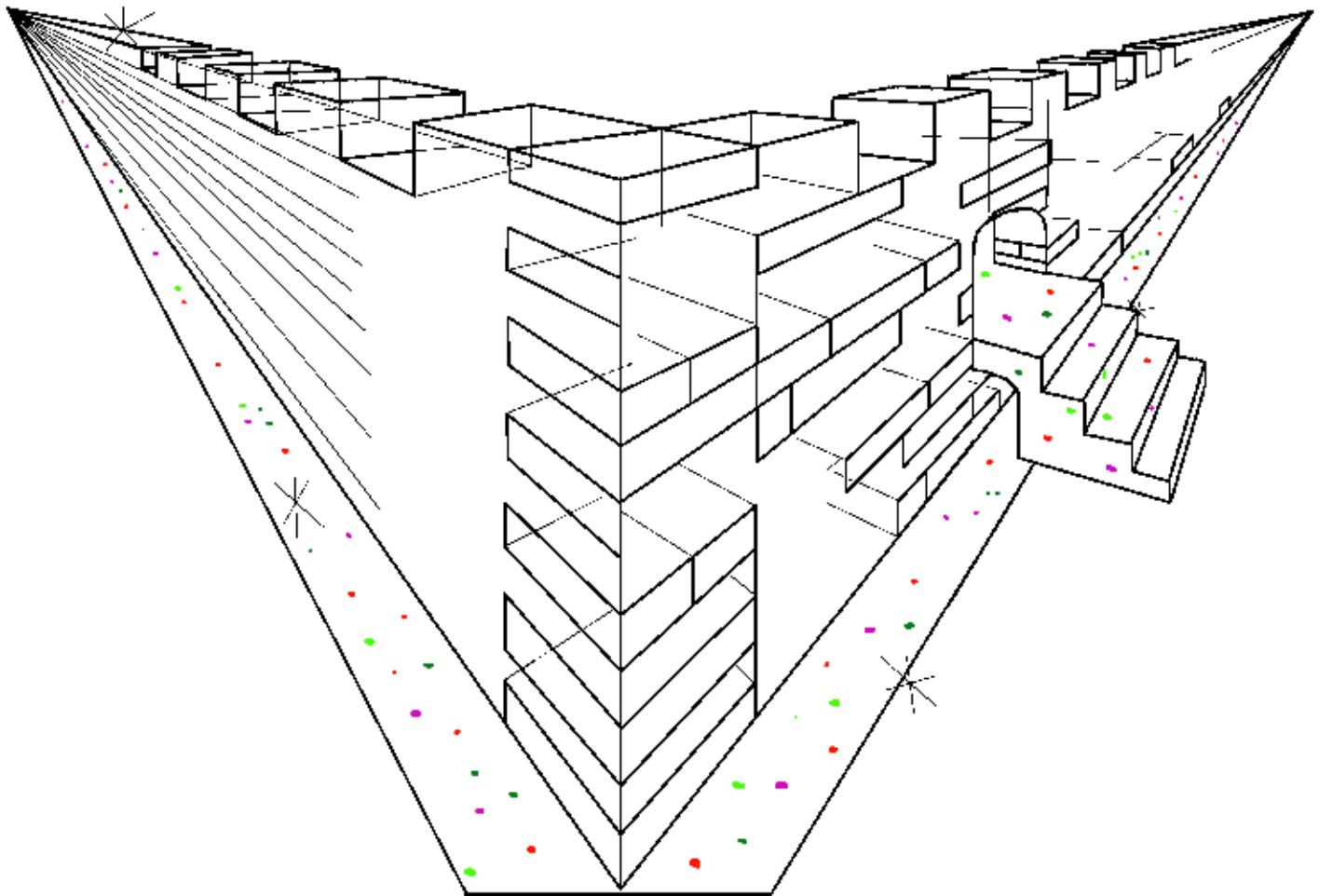
Bamalaika nende bibumbe
bibindi bisaaya Wele mwikulu.
Nono kario khu baandu ba
Wele babafwa bacha mwikulu.
Bemba chilili kimyenya kie
khufumia Wele.



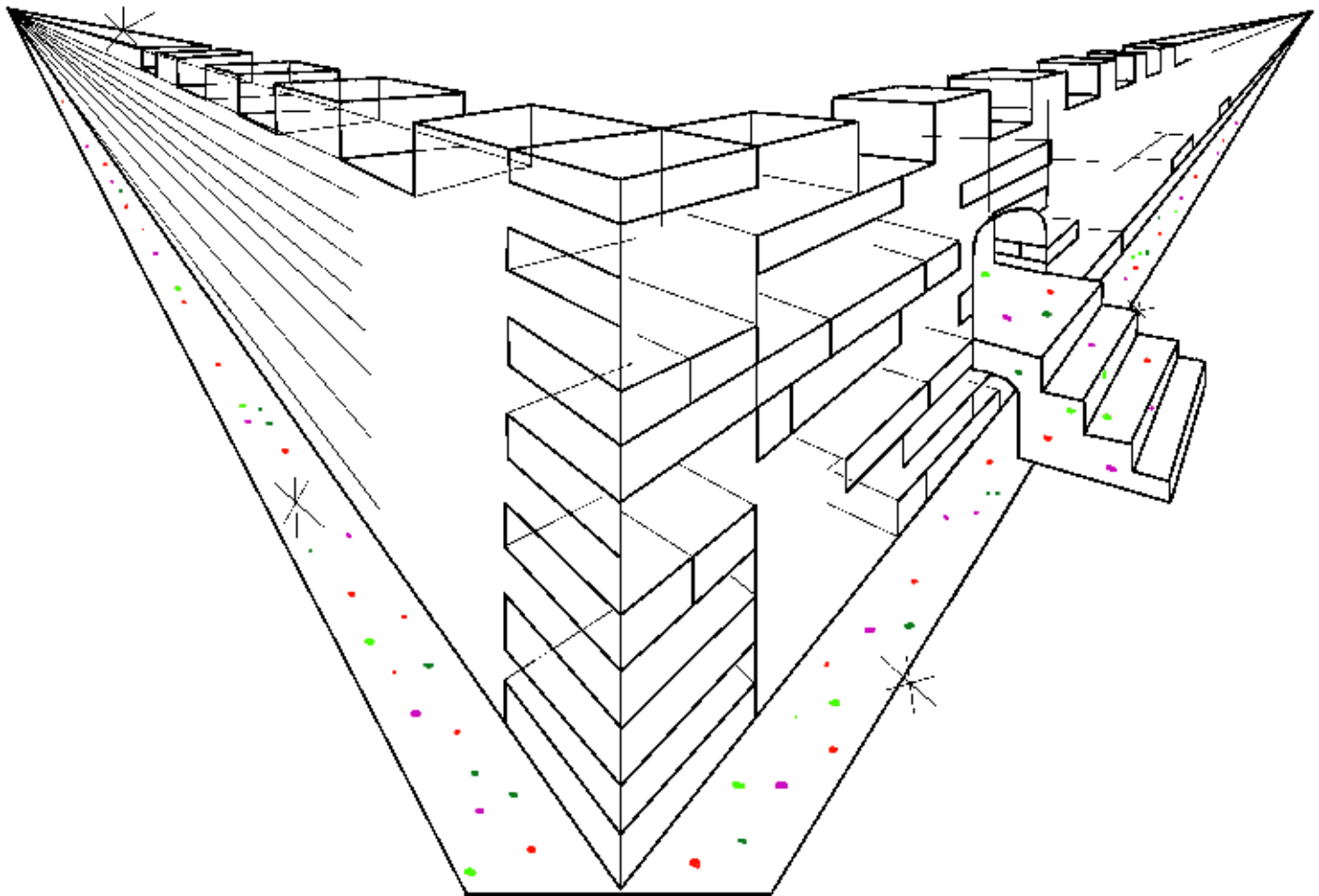
Ano kilivo kamakhuwa malala ke kimienya niko
beembanga: EWEWE WOOLAANA KHULWE
KHUKHUKULA NE KAMAFUKI
KOO KHUKHWAMA MUKHOLO
NENDE MUBIBALA MALA
WAKHUKHOLA BARUKI
LUNDI BABELWACHI
BEEANGAKI
BA WELE
WEFWE
(Khuf 5:9)



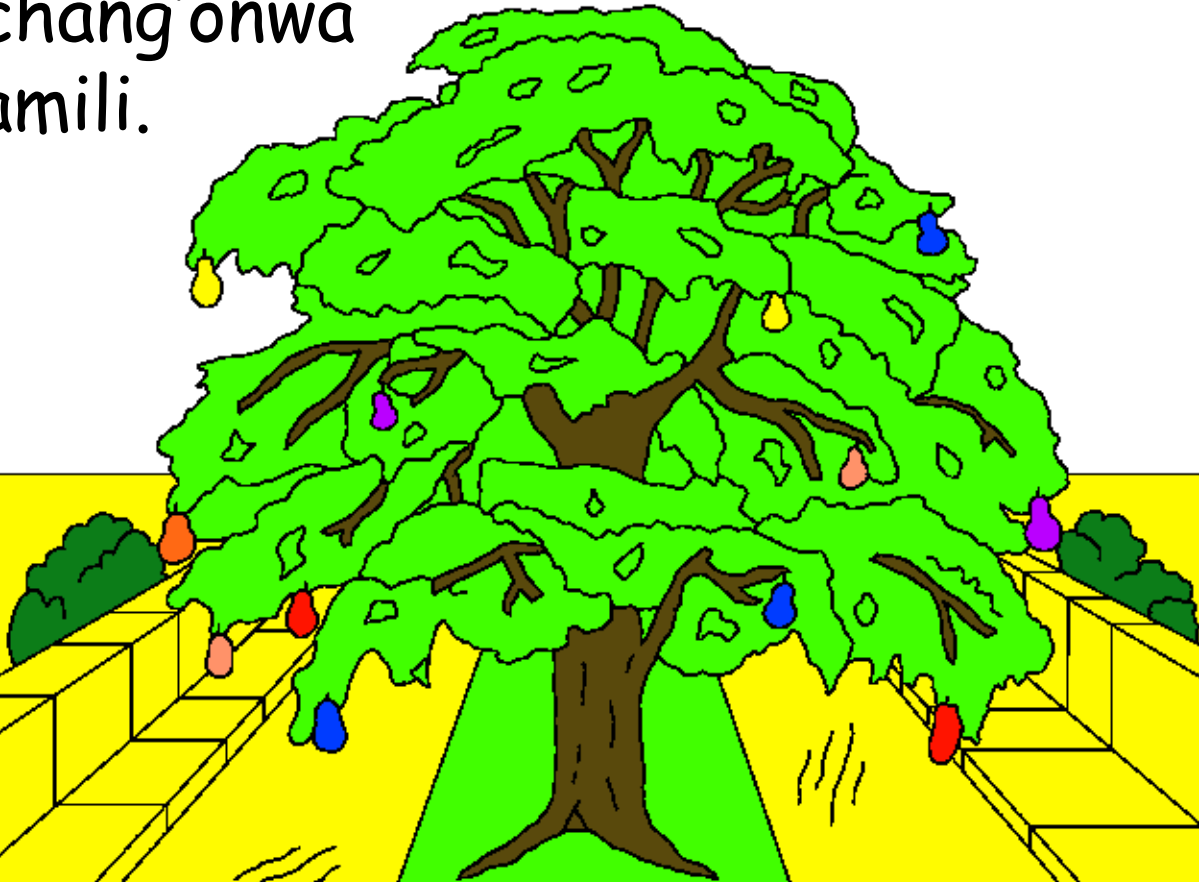
Chipabulo chimalilisi che' Biblia chiibala likulu khuba
"Yelusalemi Engeni" eli eengali lukali nende lisisi
lileyi enje. Ne lisisi lino lili lye kamabale
kamenuukha kamamiliuu nga ekilasi ewanga
echwenufu chwe.



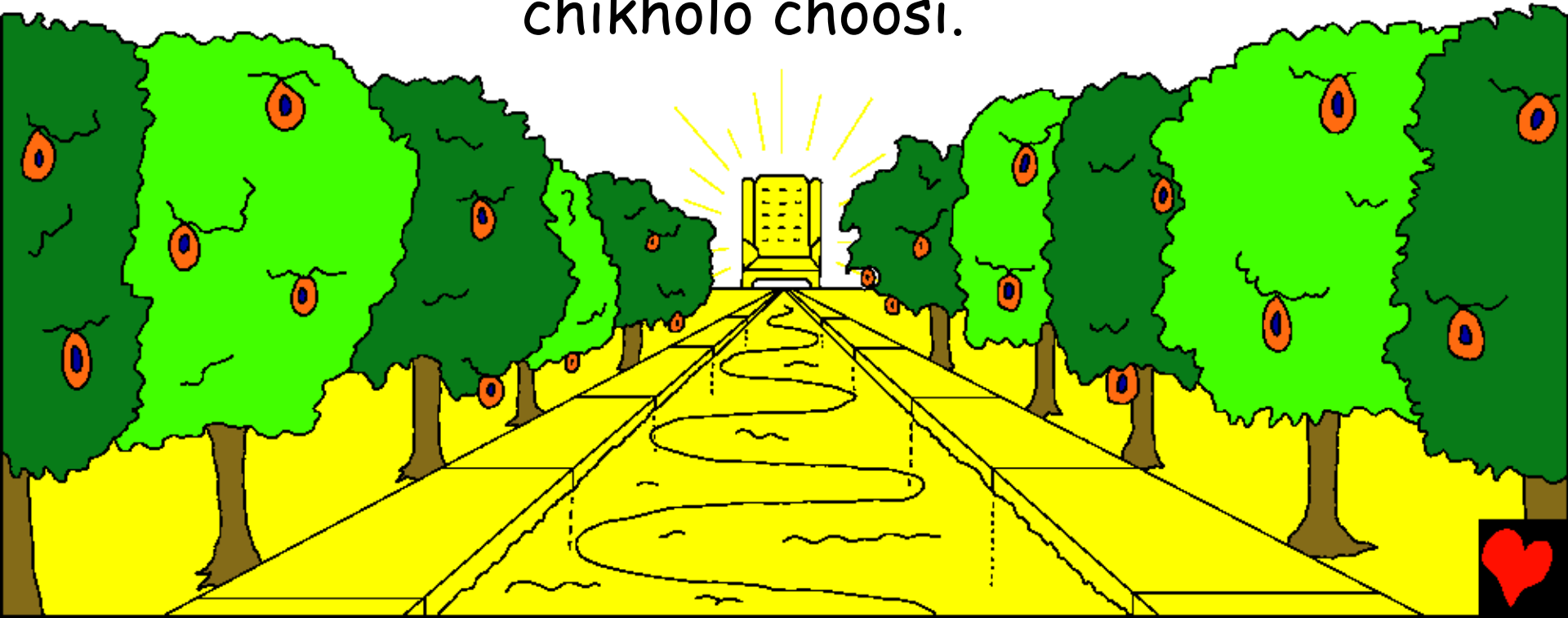
Niko kamala kelubanjango lwe lisisi elyo nga
limieuukha mieuukha bulayi. Buli bilibwa bye sirimba
bya ng'onwa mu lulu ndala echwenufu embofu.



Bilibwa byekhuukia ebyo sebabikalangao tawe.
Khakhuche mukari kubone... EEE likulu limiliu
khukhilakho. Sirimba sia ng'ona nende kamamili
kang'one nga sikombe siwanga chwe. Akhaba chingila
choosi chang'onwa
ne kamamili.



Lumiliuu, luluchi lwe kamechi ke bulamu kachichukha khukhwama mumwimubeebee bubwami kwa Wele. Khu mbeka chombi che luluchi kumurongoro kwebulamu kwabao, kukwabao muliruti Iya Edeni. Kumurongoro kuno kuli nganga kwama katunda, mubiise chingano khumi na chibili, lukano lulala kumwezi mulala. Ne kamasafu kekumurongoro kwebulamu kali kamalesi chikholo choosi.



Mwikulu bali enya buwanga bwe nyanga namwe
kumwezi tawe. Bukhumi bwa Wele omwene aliba
bwabwe siilo sesiliibayo tawe.



Akhaba chisang'i che mwikulu sechifwanana tawe.
Choosi chimbaaa lundi chili nebusiime. Namunyu ne
kamakhese byaiila bunyasi alala. Akhaba chisimba
chindafu chaya bunyasi nga chieei. Omwami aloma
ali mbao khumisia ne khusiasa mu butakatifu
lwange lurabora tawe.



Nekhulola chimbeka chosi khubona khuli bino
bibindu bilala bikhali mwikulu tawe.



Mbayo kamakhuwa keririma kakaulikhanayo tawe,
mbayo khukupana namwe chinge, mbayo chikofulo
khunjiki ta, nekakila mbayo babefwi mwikulu ta,
mbayo babeyi,

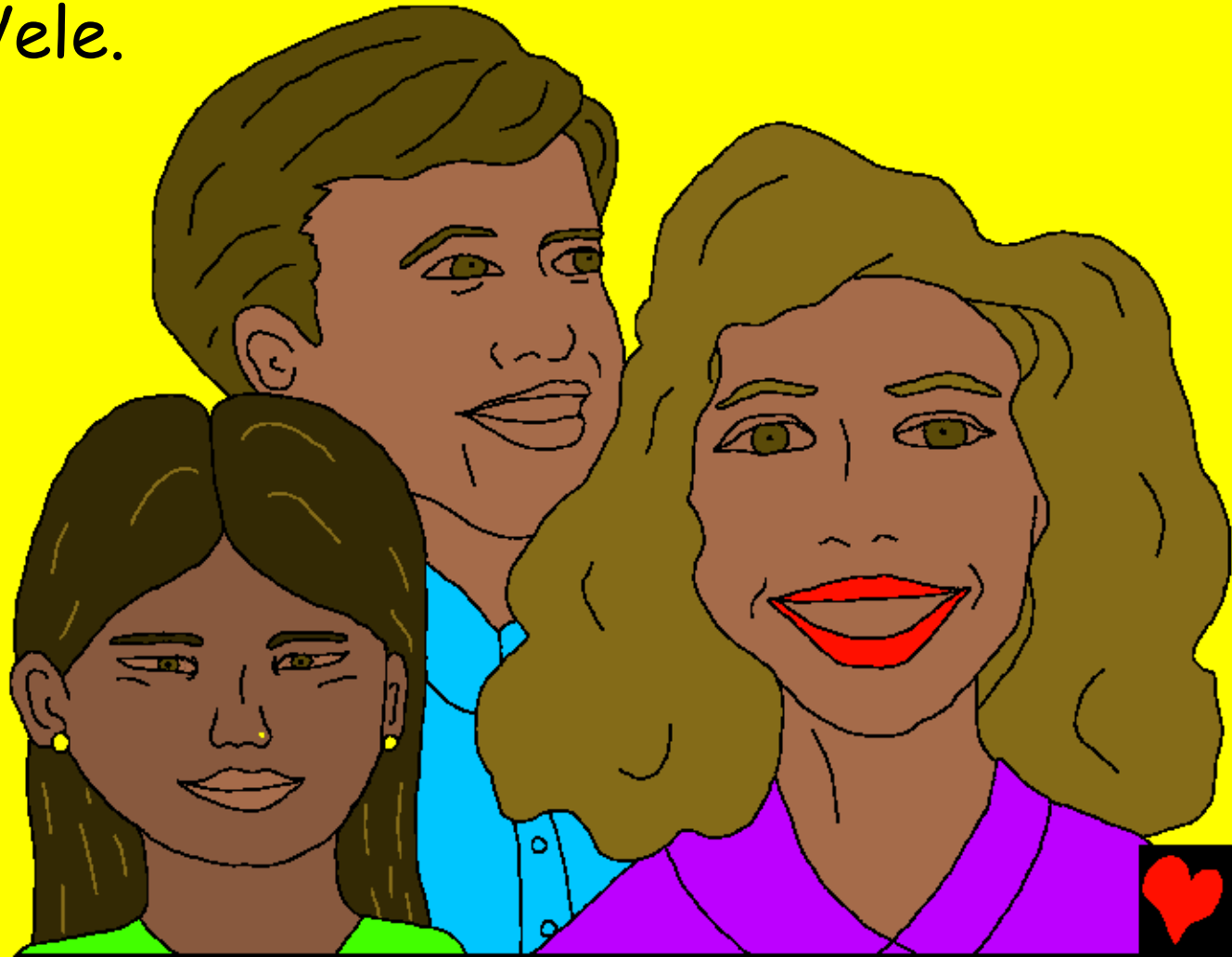
baberi,
balosi,
namwe
babooni
boosi,
mbayo
bubooni
bwe
lukano
lwosi tawe
mwikulu.



Mwikulu nende Wele
mbayo kamasika. Bise
bibindi babaandu ba
Wele balila sikila
sinyakhano mubulaamu
buno. Mwikulu Wele
akheye kamasika koosi.



Lifwa mbayo mwikulu, lundi, Babandu ba Wele bakhabeo mindali no omwami. Mbayo sibela, mbayo khulila, mbayo buchuni mbayo bulwale, mbayo kamasika buli muundu mwikulu aliomusangafu mindali na mindali ne Wele.

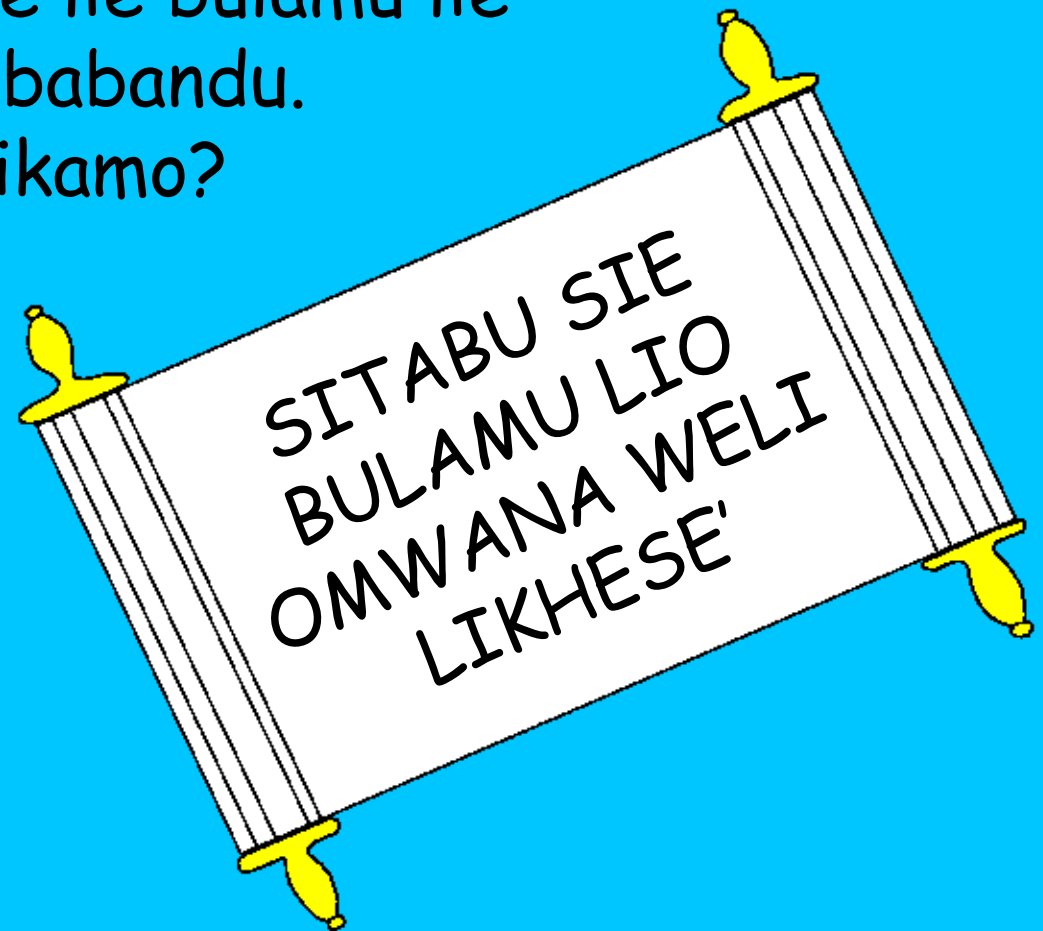


Bulayi bwa kosi mwikulu muli mwebaele be sisoledi
nende basikhana (nende bakhulile boosi) babasubila
mu Yesu kiristo khuba omwami ne bamuria nga
Omwami wabwe. Mwikulu mulimo sitabu abasilanga
bali mwana we likhese lie bulamu lie
yichula kamasinaa kebabandu.

Kamasina niko baandikamo?

Babandu bosu baraa
lilieikina lyabwe
mu Yesu.

Ne lisina lioo
liosilimo?



Chilomo chimalilisi che Bibilia khumakhuwa kemwikulu khuli khukhwikhoela khwekhuukia kimoyo nende omwea baloma bali (yicha). Ne yesi owulila loma oli (yicha) ne oyo alinebulesia eche nende oyo owekomba lekha eche abukule kamechi kebulamu busa.



Mwikulu nio engo esimisia wa Wele

Lukano khukhwama mwikhuwa lie Ebibilia

Linyolekha mu

Yohana 14; 2 bakorito 5;
khubikilwa 4, 21, 22

"Khuchakaa khwechilomo chowo chiaana
buwangu." Ezabuli 119:130



Khumalilisia



Ebibilia yino ekhubolela khulugano lwe khuwukia
Iwa Wele owakhumba, lundi owekomba ewe omumanye.

Wele amanyile ali khukhola bindu bimayano nibyo niye alangaari
bubwoni. Kumukhamba kwe bubwoni lili lifa, ne Wele kusiima poo
aruma omwana wewe yeng'ene Yesu khukhwaja khufila khumusaba
mala abenie atambibwe khulwe bubwoni bwowo. Lundi Yesu akobola
mulamu lundi acha engo mwikulu. Ewewe nosubira mu Yesu mala
wareba silekhelo sye bubwoni bwowo, niye kana akhole!
Niye anecha amenye mwiwe aluno ano, ne wewe nawe
okhamenye nenaye mindali namindali.

Nekaba mbo wafukikile oli bano bung'ali, loma kano khuwelu;
omusiime Yesu ese esubira ndi ewewe oli Wele mala wakalukhana
waba umuundu khufa khulwe bubwoni bwange neluno luri ewewe
omenyile oli omwami lundi. Nono nosiima yija mubulamu bwange mala
umbele bubwoni bwange, niobe nebulamu buya luno neli ne endalo
ekindi ekheje mbe nawe mindali na mindali. Jende khune ewewe
mala menyesikila ewewe ngo omwana wowo. (Amina) yee.

Soma ebibilia mala obenga buli endalo oloma
lama nende Wele. Yohana 3:16

