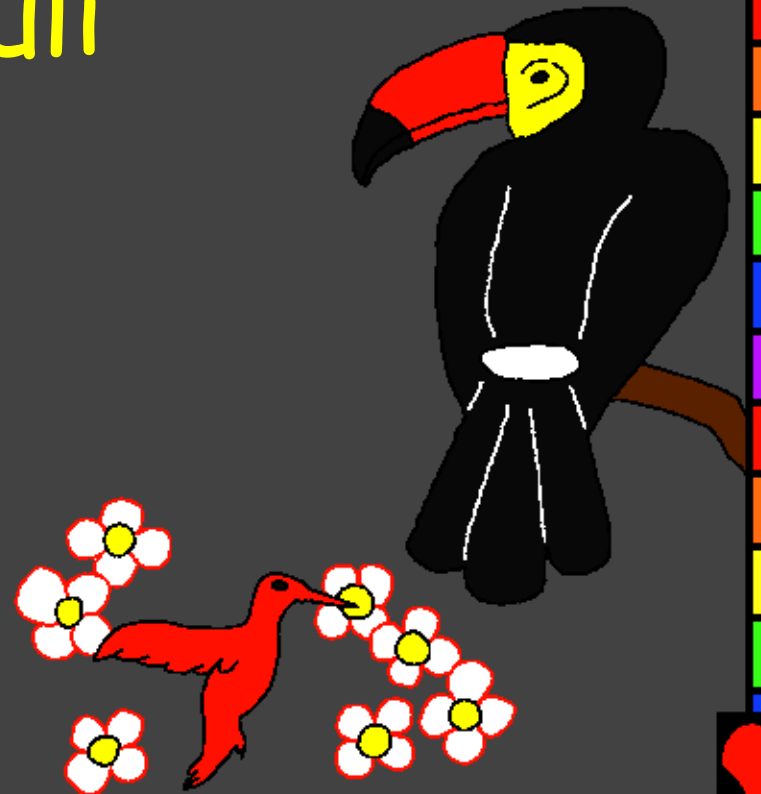


I Bayibuli iye babaana  
ikhureerera

Imbuka isi Wele  
aakholela buli  
shiindu



Byaronebwa ni: Edward Hughes

Byaloosebwe lakho ni: Byron Unger; Lazarus  
Alastair Paterson

Byan'gan'gasibwa ni: Bob Davies; Tammy S.

Byaayusibwa ni: Rev Eridad Milton Shissa

Byaarusibwa ni: Bible for Children  
[www.M1914.org](http://www.M1914.org)

©2020 Bible for Children, Inc.

I Layisiinsi: Uli ni buubalaayi khuukoopolola namwe khuukhupisamwo  
luukano luno, n'uuba nga s'uuli khuutsya khuulukulisa ta.



Naanu uwakhubumba ifwe? I Bayibuli,  
nga niyo Ilomo ya wele, ikhubooelela ifwe isaambo  
isi babaandu baarakikhamwo. Khaalekho, Wele  
aambuumba umuundu uwanyoowa, aryo  
waamwiikha lisiina ari Adamu.



Wele aabumba Adamu khukhwaama mwifukhuulu  
Iye khu shibala. Ne Wele n'aaheela kumuukha kwe  
buulamu mu Adamu, Adamu ekela umuundu umulamu.  
Aryo wenyoola nga ali mu mukuunda kumulayi  
kweesi balaanga bari Edeni.



Wele nga ashiili khuubuumba Adamu ta, aanyoowa  
khuubuumba shiibala shiilayi shishiitsuulemwo  
bibiindu biilayi swaa busa.

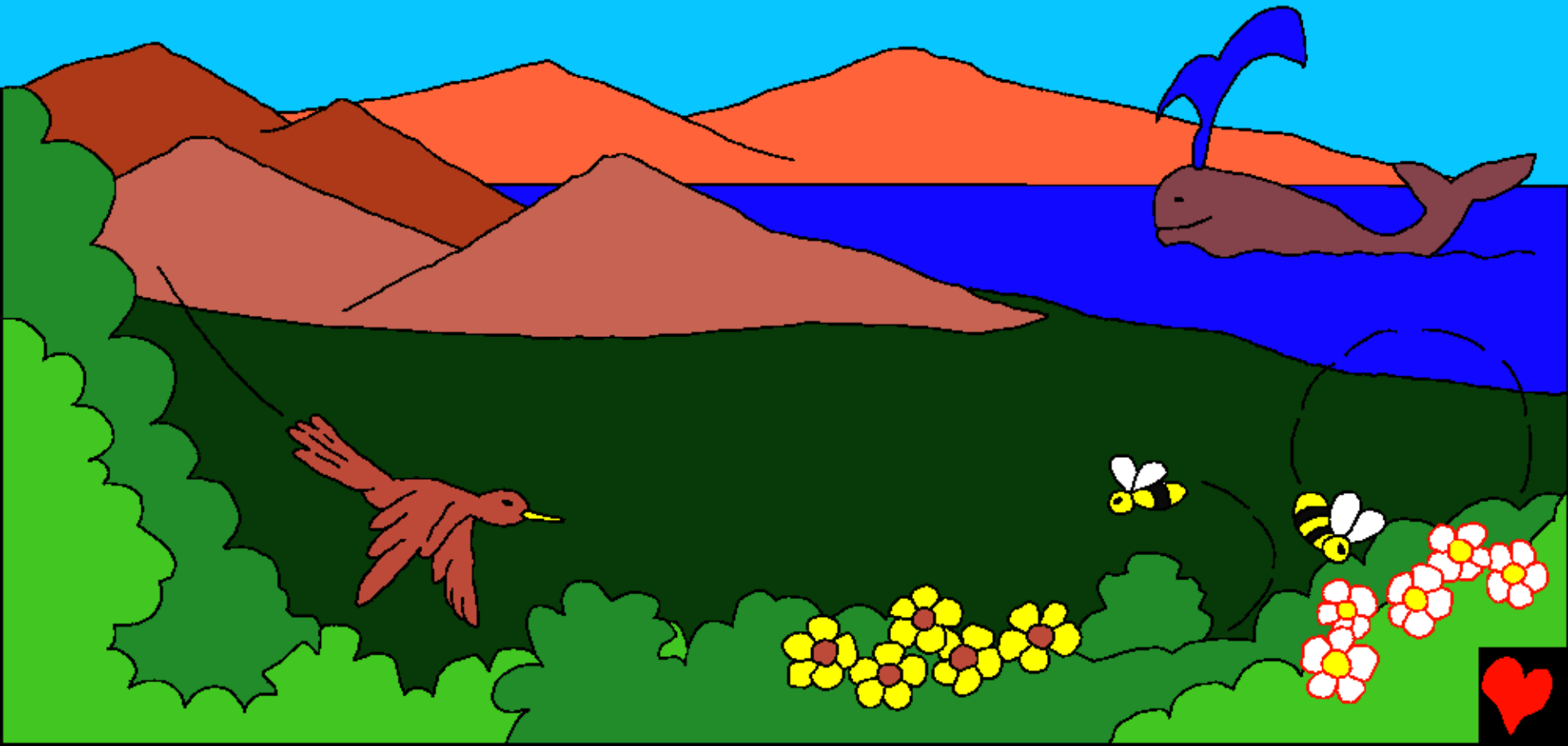


Wele waatsya nga abumba shitweela khu shitweela,  
waarawo biifwo bye tsingoongo, ni biifwo bye  
kumusaaleela, biimuli bibiiwunya buulayi, ni kimisaala  
kimileeyi, binywiinywi bye tsiraangi khu mooya  
kaabyo ke tsisaambo tsitsiikhali ndweela ta,  
ni ntsukhi ikeenda nga iwuuma,

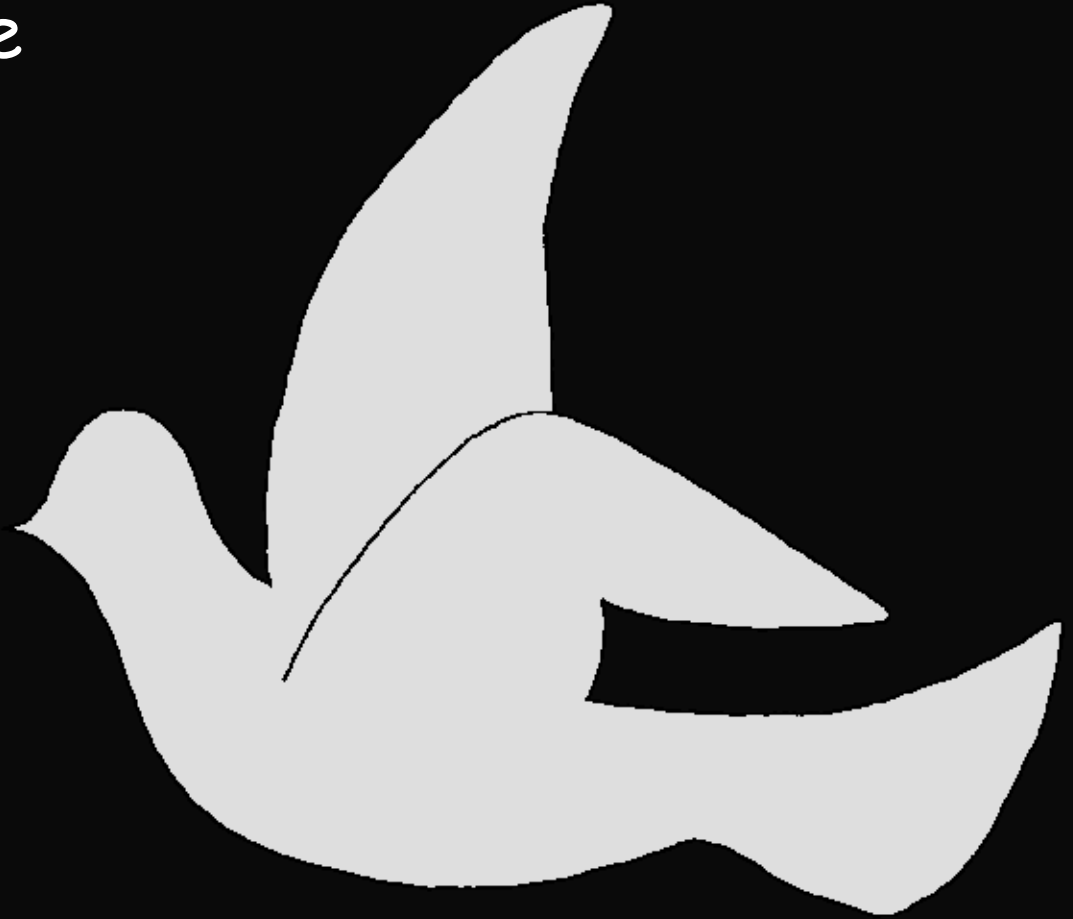
kamanyeeni kamaboofu  
ni tsiikhuumuniyu  
tsitsarerera.



Mwilala, Wele aabumba buli shiindu shyoosi  
shishiiliwo - Buli shiindu shoosi.

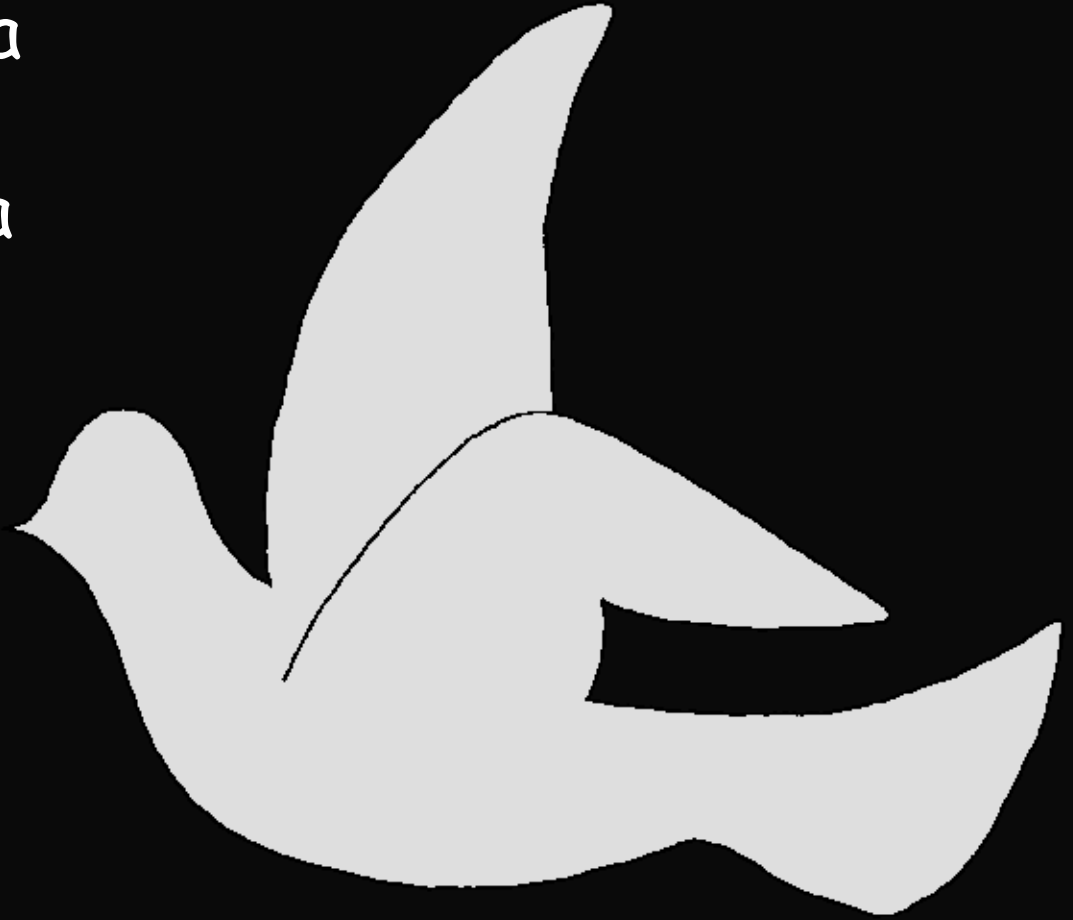


Mu khurakikha  
khukhweene, nga Wele  
ashiili khuubuumbayo  
shishiindu shoosi  
ta, siyabawo  
shishiindu shoosi  
ta, khuurusakho  
Wele umweene  
yenyene. Siyabawo  
babaandu namwe  
shishiindu shoosi ta.





Mbaawo shoosi ta.  
Nga mbaawo buwaanga  
namwe shishiilima ta.  
Nga mbaawo khuuniina  
nga khukhwiikhilila  
ta. Nga mbaawo  
ingoloobe namwe  
kumukaamba ta.  
Wele yenyene  
niye uwabawo,  
ukhaabakho ni  
buurakikhilo ta.  
Nio lwanyuma Wele  
waabakho ni sheesi  
akhola.



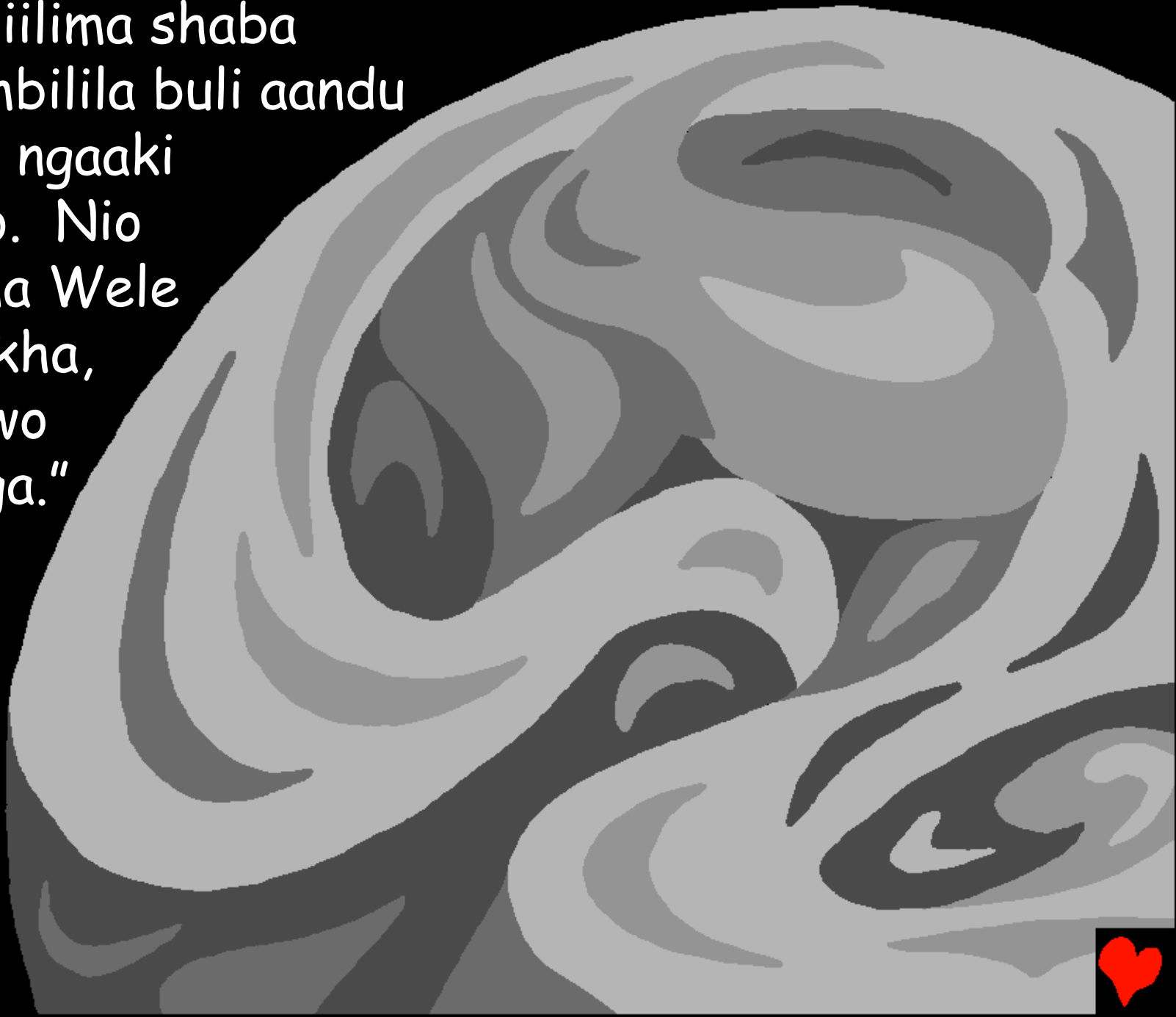
Mu khurakikha, Wele aabumba  
liikulu ni shibala.



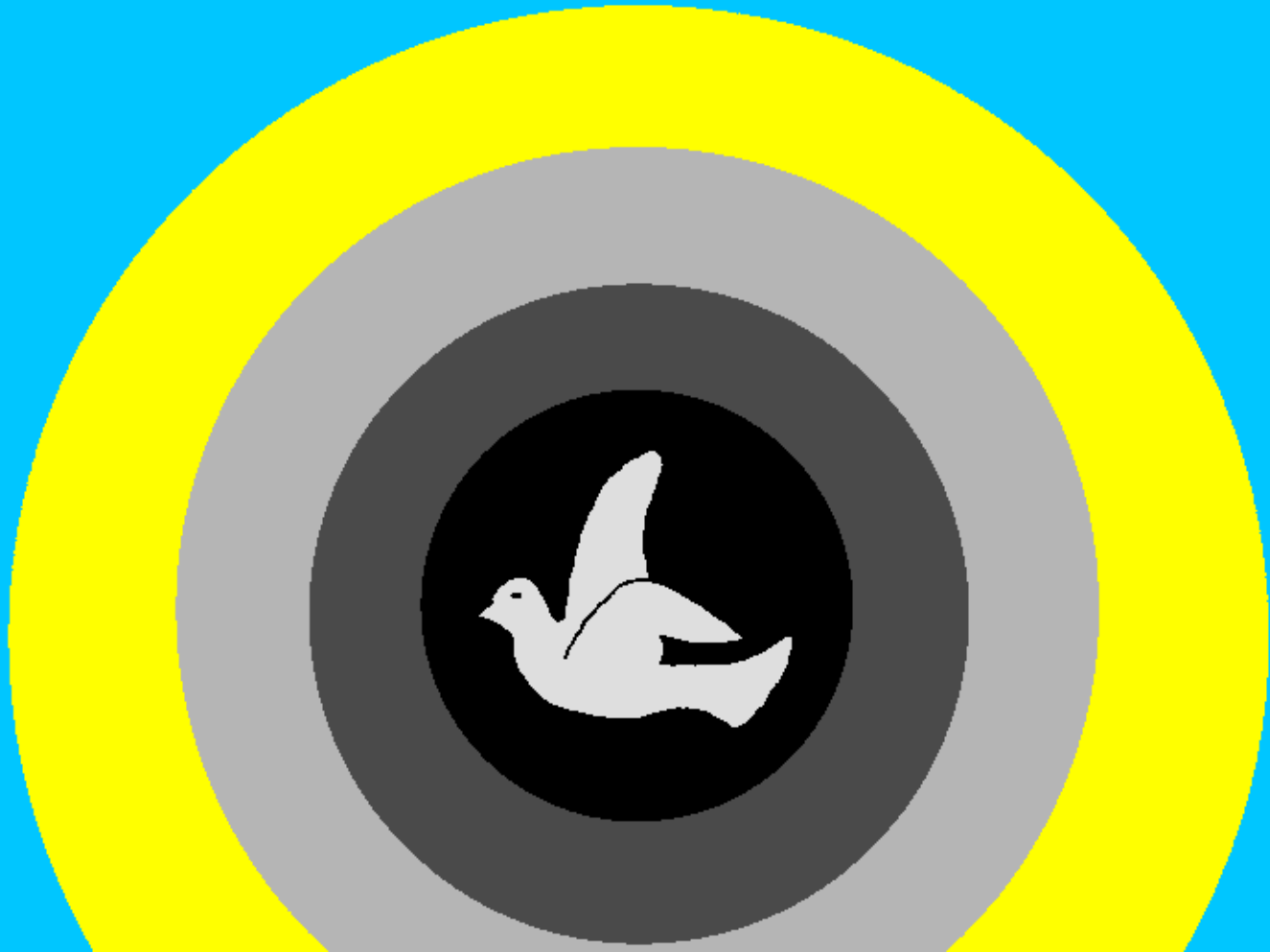
Ni shibala shaba  
shaayikoyakoya  
busa nga  
mbaawo  
shiindu  
shiilamu  
ta.



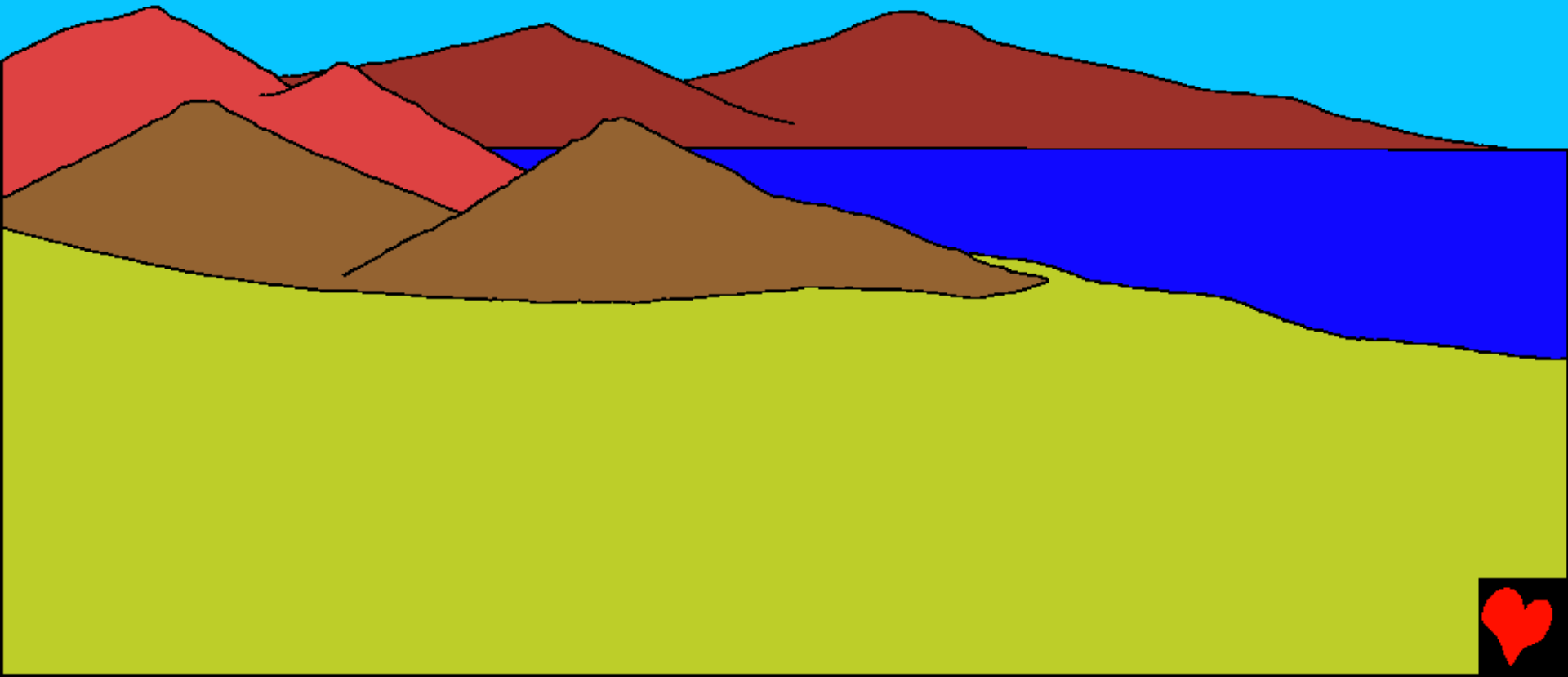
Ni shishiilima shaba  
shaabiimbilila buli aandu  
oosi khu ngaaki  
khwasho. Nio  
lwanyuma Wele  
waakanikha,  
"Ni abewo  
buwaanga."



Buwaanga bwaaburukha. Kila wele alaanga Buwaanga  
ari Kumuusi, ni shishiilima waashilaanga ari Shiilo.  
Aryo antsye bwelabula, luundi bweelayo bwaasha  
kumutikhinyi, ishyo shifukhu shiikiboole.



Khu shifukhu she khaabili, Wele aareera kameetsi  
ke mu mayaantsa, tsinyaantsa ni buyaantsa atweela  
aasi e likulu. Khu shifukhu she khaataru, wele  
waaloma ari, "Lekha lulwoomu lubonekhe."  
Shiryo shaakholekha.



Luundi Wele waalakila buunyaasi ni bimuli, ni bitsakha,  
ni kimisaala, bibonekhe. Biryo byoosi byaabonekha.

Aryo antsye bwelabula luundi  
bwaasha kumutikhinyi,  
shaaba shifukhu  
she khaataru.



Nio lwanyuma Wele waakhola  
Inyaanga, ni kumweesi, ni tsinieniesi  
swaa busa tsyeesi umuundu yeesi  
akhanyala waabala na khubala ta.  
Aryo antsywe bwelabula luundi  
bwaasha kumutikhinyi, shaaba  
shifukhu she khaane.





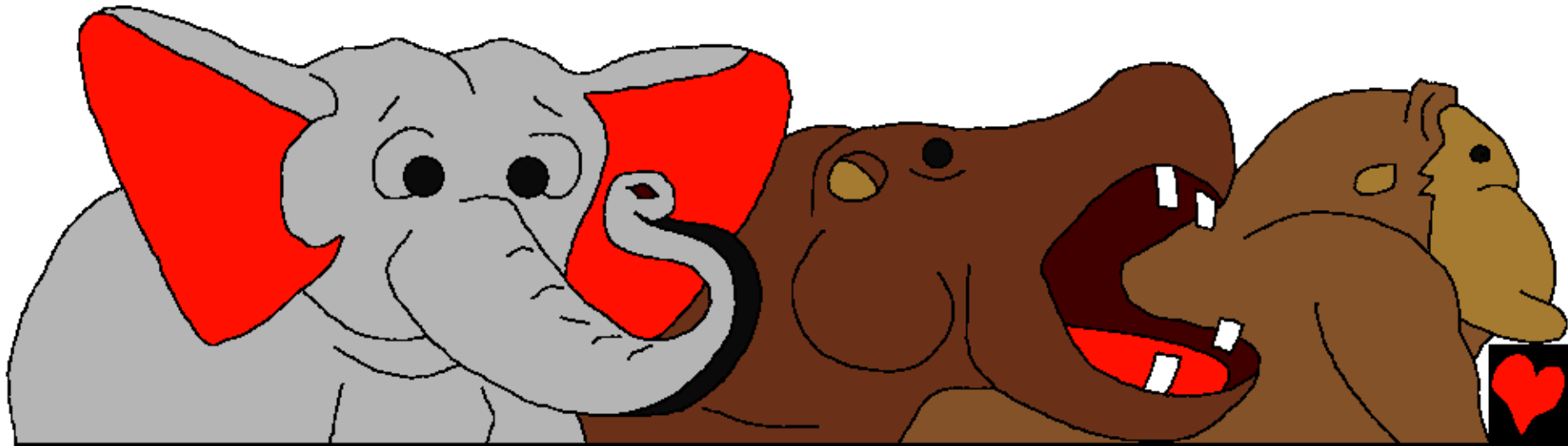
Bibuumbe bye mu nyaantsa,  
ni tsinyeeni, ni binywiinywi  
nibyobyeeelakho byeesi  
Wele aabumba. Khu  
shifukhu she khaaraano,  
Wele aabumba kunyeeni  
kukuufuurayo buboofu,  
ni bunyeeni buukeekhe,  
kiminywiinywi  
kikyekaangukha mu  
ngaaki tsinyoofwe, ni  
bunywiinywi namyeenya  
buukeekhe.



Wele waabuumba buli  
shikuuka shoosi she  
tsinyeeni, khuulyalyakhana  
mu meetsi koosi, na buli  
saambo iye binywiinywi  
khukhwiinyayila khu  
shibala, ni khu meetsi,  
ni mwibaanga lye likulu.  
Aryo antsye bweelabula,  
luundi bweelayo bwaasha  
kumutikhinyi, shifukhu  
she khaaraano.



Lwanyuma lweebyo, Wele waakanikha luundi.  
Kwa luno waaloma ari, "Khayo shiibala shisaale  
bibuumbe biilamu..." biryo nio buli shikuuka sha buli  
solo, ni bikuuku, ni bibyalaamila aasi khwiloba  
byeetsawo. Mu bino mwabamwo tsintsofu  
tsitsiisindokoma khu shibala ni buusolo bukeekhe  
bubwiilikuusa eyi ni neeyi.

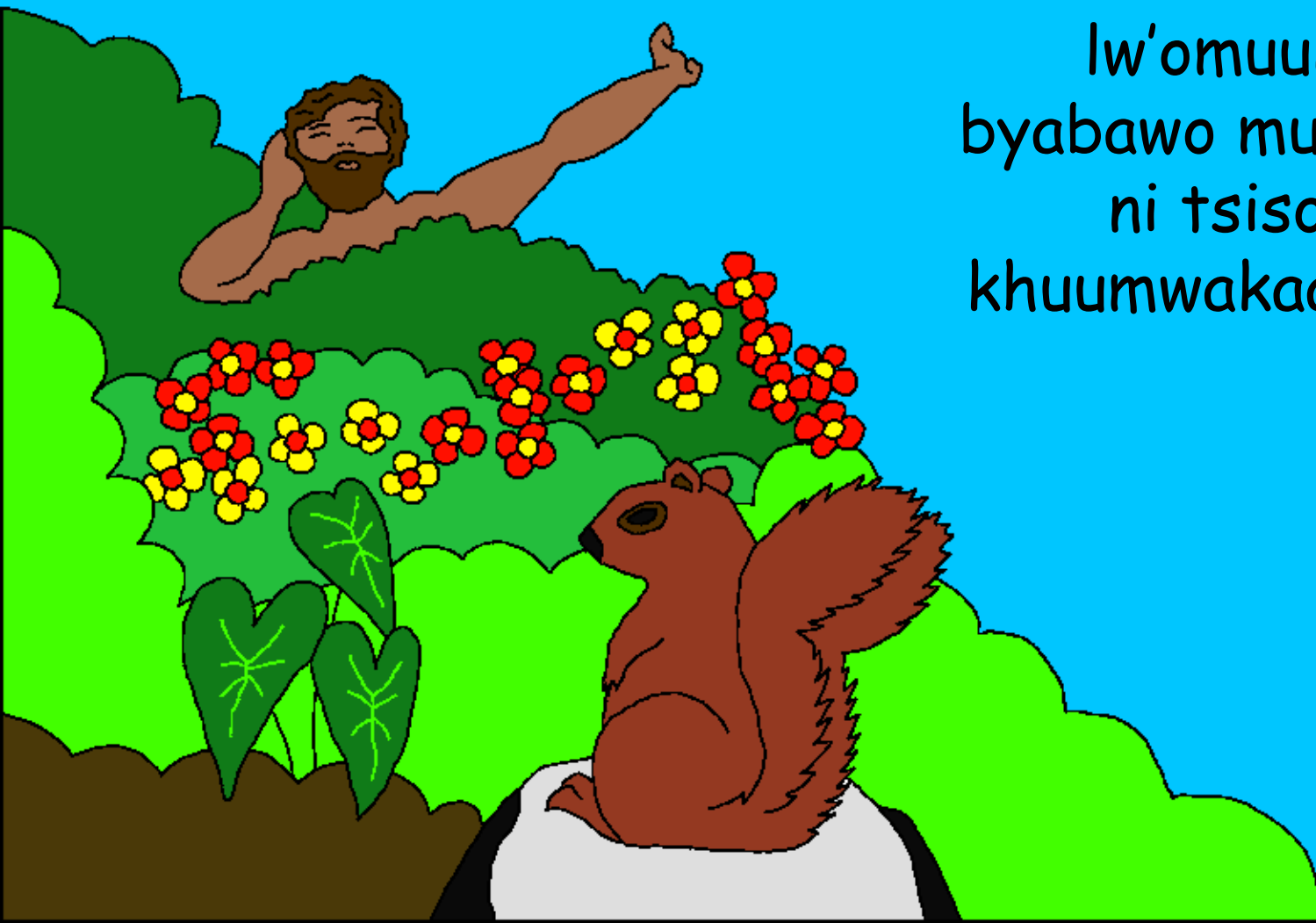


Nga waareerekho ni tsikhobe, ni tsikoonya.  
Urekho ni kamakhanu, ni buubeba bwoosi,  
waambuumbayo ni tsitiika ni bupusi bubwiinyahaka.  
Isolo iya buli saambo yoosi yabuumbibwa ni Wele  
khu shifukhu isho.

Indi luundi antsyee bweelabula, luundi bwaasha  
kumutikhinyi shifukhu she khaasesaba.

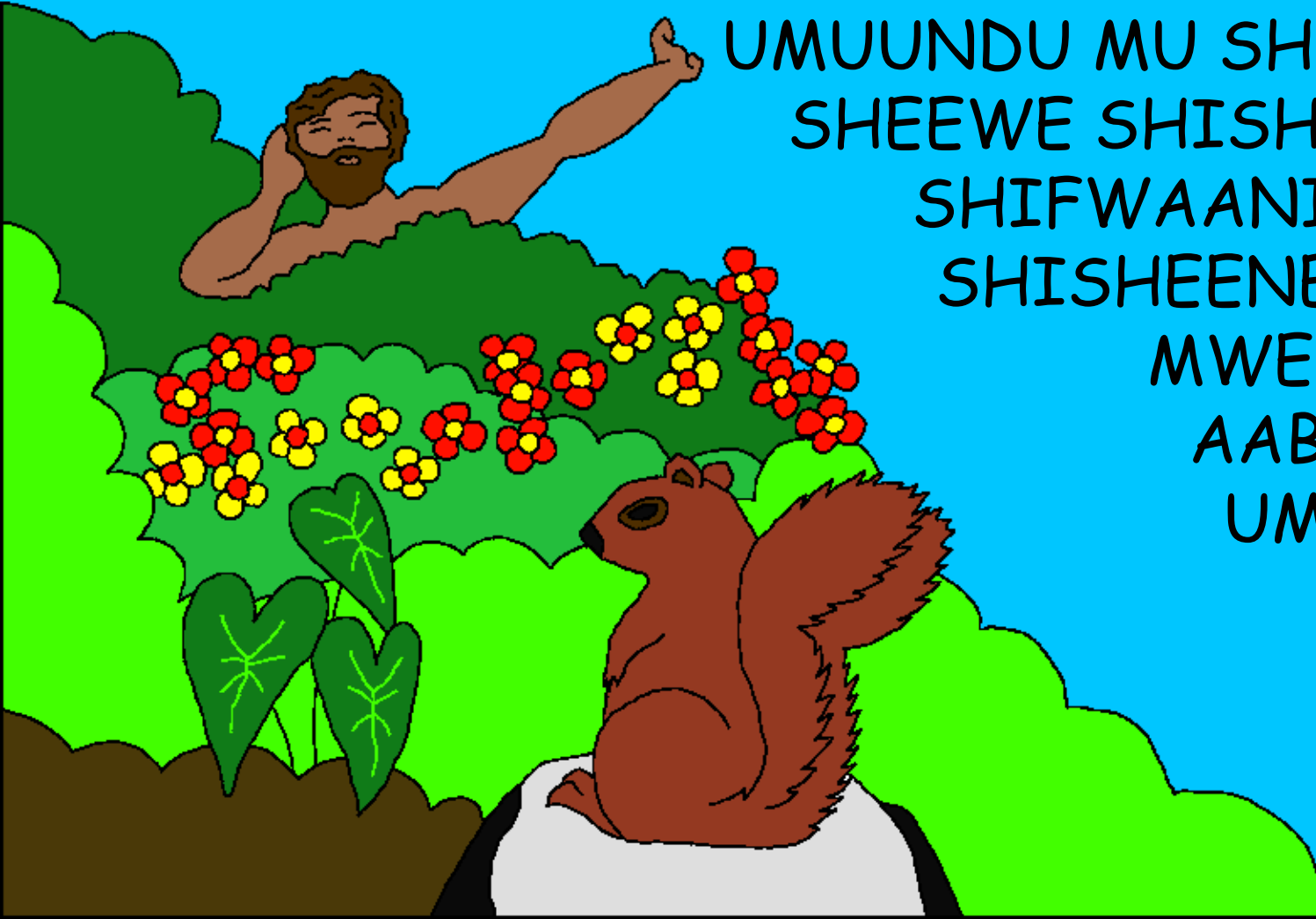


Wele ndi waakhoolayo shishiindu shishiindi  
khu shifukhu she khaasesaba - shishiindu sha  
buraawa naabi. Khu mbuka yino buli shiindu shaba  
shaarekekhebwele khu  
lw'omuundu. Biilyo  
byabawo mu mikuunda,  
ni tsisolo tsyeene  
khuumwakaanisatsaka.



Luundi ndi Wele waaloma ari, "Ari khakhukholeyo umuundu mu shifwaani sheefwe shisheene. Khayo umweene yuno abe niye uwula buli shiindu shoosi shishiili khu shibala." ARYO WELE WAABUUMBA

UMUUNDU MU SHIFWAANI  
SHEEWE SHISHEENE; MU  
SHIFWAANI SHEEWE  
SHISHEENE, NIMWO  
MWEESI WELE  
AABUUMBILA  
UMUUNDU ...



Kila Wele akanikha isi Adamu ari, "Lya buli shiindu shoosi sheesi ukana khukhwaama mu mukuunda. Ne ukhalyakho khu kusaala kwe kuumanya shiilayi ni shiibi ta. Nga weetsile khulyakho khu kusaala ukwo, ilala ukhaafwe."



Luundi ndi Umukasya Wele waaloma ari, "Sishili shiilayi umuundu/umusaani khuuba yenyene. Indy kane imukholeleyo umuyeeti umwaakhila." Aryo waareerera Adamu binywiinywi ni biisolo. Naye aryo Adamu waabitwiikhaka kamasiina byoosi.





Shinyalikha khuuba nga aaba umusaani umukesi  
naabi. Ne khu binywiinywi byoosi ni biisolo byeene,  
mbaamwo shyeesi aanyoolamwo  
nga shaakhila khuuba she  
khuubeesabeesa  
isi Adamu ta.



Aryo Wele waareerera Adamu liilo nameyiriira lilyeene. Aryo Wele nga waarusilemo lutweela khu mbafu tsya Adamu, waalubumbamwo umukhasi.

Umukhasi uyo isi Wele aabumba aabeela ilala uwakhuuba umuyeeti isi Adamu.



Aryo Wele waaba waabuumbile bibiindu byoosi  
mu bifukhu bisesaba byonyene. Kila awa  
tsikhabi shifukhu shye Kumusaafu,  
waalwikelisa shifukhu shye khuuwolakho.  
Mu mukuunda kwa Edeni, Adamu ni Eve  
umukyelama weewe, baaba ni kumwikhoyo  
kumwitsufu kwe khuuwuliilisa byeesi  
Wele aloma. Wele aaba niye  
Umukasya waabwe,

umuwaani waabwe luundi  
Umusaale waabwe.



Imbuka isi Wele aakholela buli shiindu

Luukano khukhwaama mu Lomo ya Wele,  
I Bayibuli

Inyoolekhana mu

Khuurakikha 1-2

“Biilomo byoowo nga byeenjiile bireera  
buwaanga.” I Zabuli 119:130



Intasakamwo



Luukano Iwe Bayibuli luno lukhuboolela ifwe bibiihaamba  
khu Wele weefwe umukhulu, uwakhubuumba ifwe naluundi  
uukhukana iwe umumanye niye.

Wele waamanya ari ifwe khukhola bibiindu biibi biikali, byeesi niye  
umweene alaanga ari bibyoonako. Shitaambiso shye bibyoonako nikhwo  
khuufwa, ne Iwekhuuba Wele akhukana iwe naabi, waarumana Umwaana  
weewe Mutweela Yenyene, Yesu Kristo, khukhwiitsa khuukhufwiilila khu  
musalaba, aryo niye waataambisibwa Iwe bibyoonako byoowo. Lwanyuma  
Yesu waalamukha khukhwaama mu bafu weelayo Mwikulu! Iwe n'ufukiilisa  
Yesu, waamuloomba khuukhwiyakhila bibyoonako byoowo, kane ashikhole!

Niye Umweene kane eetse, amenye mwiiwe aluno ari,  
ni nawe umenye ni naye biilo ni biilo.

N'uuba nga waafukiilisile uri buno buli bwan'gali, loma shino isi Wele:  
O Yesu, ifukiilisa indi iwe uli wele, ne wekyela umuundu khuufwa Iwe  
bibyoonako byase, ni na ari uliwo umulamu luundi. Ari yinjila mu bulamu  
bwase, wiyakhile bibyoonako byase, nio inyalise khuuba ni buulamu  
bushaakha alunaari, nio lube lutweela niitse imbe ni nawe biilo ni biilo.  
N'unjeete imbe uwuliilisa byeesi uloma, imbewo khulwoowo  
nga umwaana woowo. Amiina.

Soma I Bayibuli, ukanikhatsake ni Wele buli busheele! Yokana 3:16

