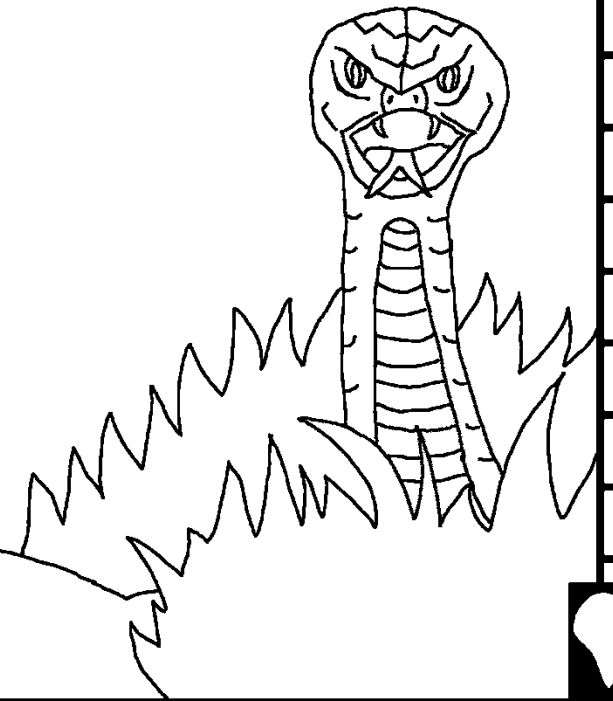


I Bayibuli iye babaana  
ikhureerera

Khurakikha khwe  
Kumutaambo



Byaronebwa ni: Edward Hughes  
Byaloosebwe lakho ni: Byron Unger; Lazarus;  
Alastair P.

Byan'gan'gasibwa ni: M. Maillot; Tammy S.

Byaayusibwa ni: Rev Eridad Milton Shissa

Byaarusibwa ni: Bible for Children

[www.M1914.org](http://www.M1914.org)

BFC

PO Box 3

Winnipeg, MB R3C 2G1

Canada

©2021 Bible for Children, Inc.

I Layisiinsi: Uli ni buubalaayi khuukoopolola namwe khuukhupisamwo  
luukano luno, n'uuba nga s'uuli khuutsya khuulukulisa ta.

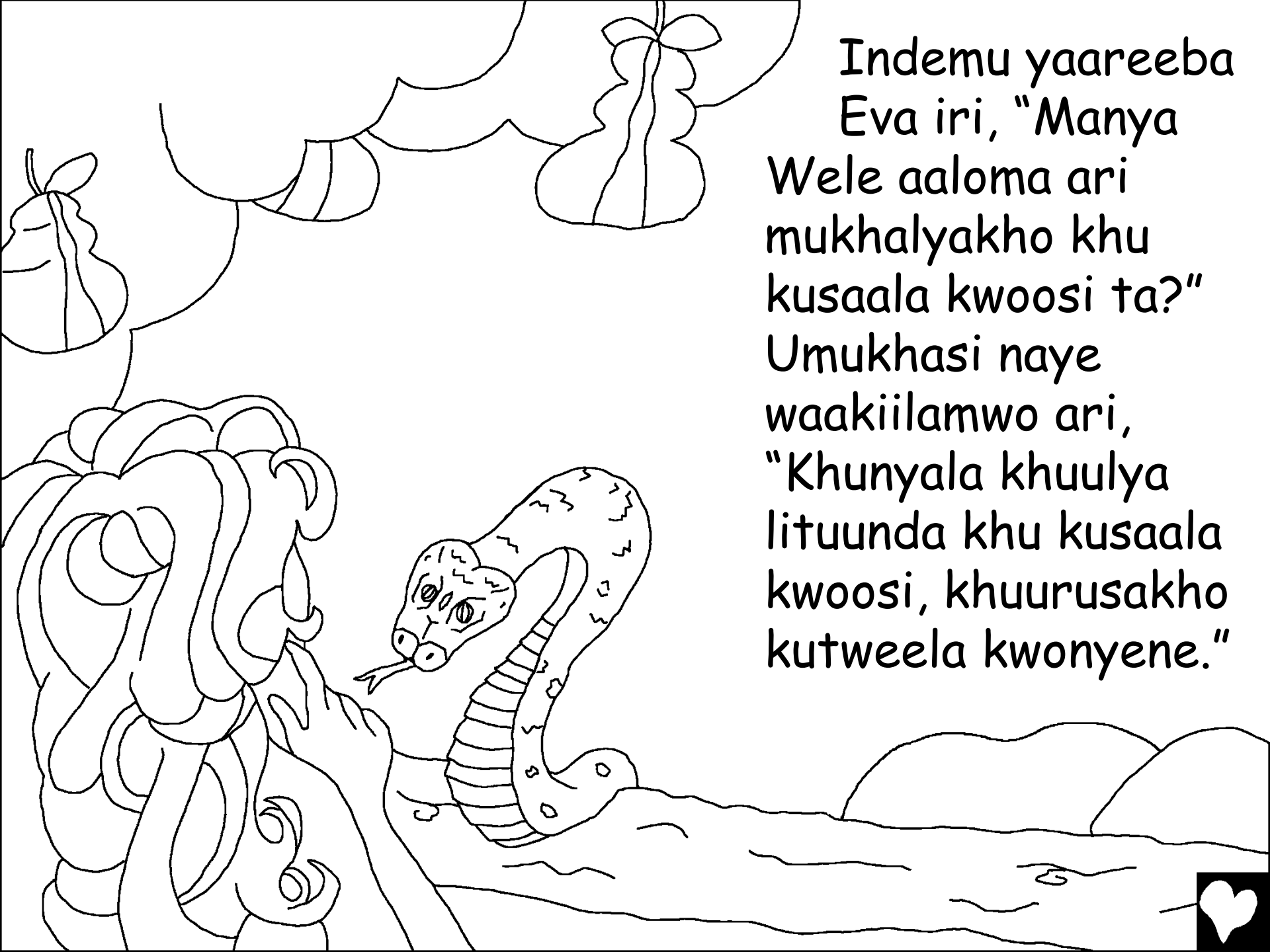


WELE AABUUMBA BULI  
SHIINDU! Nga Wele n'aabuumba  
umusaani uwanyoowa, Adamu,  
aamenyatsaka mu mukuunda  
kwe Edeni ni Eva,  
umukelama weewe.



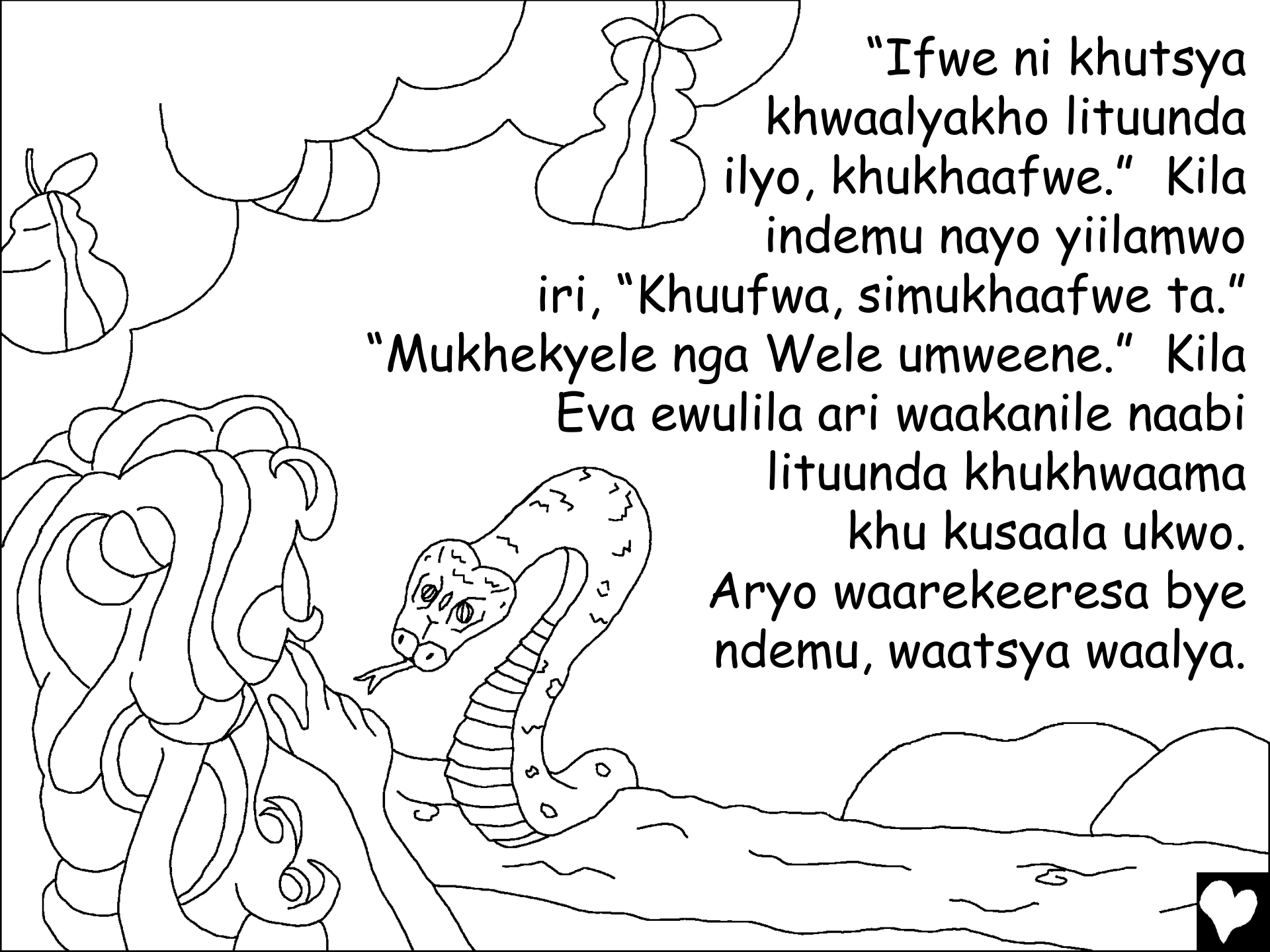
Bano boombi baaba bamenye  
mu sangaalo iye kamaani, nga  
bawuuliilisa byeesi Wele aloma,  
naluundi nga bewulilila mu Khubawo  
khweewe, khukhwolesa  
khu shifukhu shitweela ...





Indemu yaareeba  
Eva iri, "Manya  
Wele aaloma ari  
mukhalyakho khu  
kusaala kwoosi ta?"  
Umukhasi naye  
waakiilamwo ari,  
"Khunyala khuulya  
lituunda khu kusaala  
kwoosi, khuurusakho  
kutweela kwonyene."





"Ifwe ni khutsya  
khwaalyakho lituunda  
ilyo, khukhaafwe." Kila  
indemu nayo yiilamwo  
iri, "Khuufwa, simukhaafwe ta."  
"Mukhekyele nga Wele umweene." Kila  
Eva ewulila ari waakanile naabi  
lituunda khukhwaama  
khu kusaala ukwo.  
Aryo waarekeeresa bye  
ndemu, waatsya waalya.



Lwanyuma nga Eva waaminyaalile  
Wele, aryo ndi waayila Adamu  
naye khuulyakho lituunda ilyo.  
Ne abe khali Adamu elamwo ari,  
"Taawe! Ise singene iminyaalile  
Ilomo ya Wele ta."





Baryo Adamu  
ni Eva ni booneka, boombi beemanya  
bari bali bukhuna. Baatsya beenabila kamasaafu ke  
kusaala kufiki, baamisamwo bikwaaro, beebiimbilila  
buukhuna bwaabwe, naluundi baatsya beebisa mu  
shitsakha khukhwaama mu moni tsya Wele.





Khu nyaanga tsye angoloobe nga antsy  
awolelile, Wele weetsa mu mukuunda.  
Aaba waamanyile shyeesi Adamu ni Eva  
baaba baakholile. Kila Adamu ekiitsa  
Eva. Eva naye weekiitsa indemu.  
Kila Wele aloma ari, "Indemu  
yaatsubiwile. Umukhasi naye  
kane afunatsake butsiina buli  
lweesi abeela nga  
alikhusaala babaana."



"Adamu nawe, lwekhuuba  
woonakisile, shibala shoosi  
shaatsubiwile khuururakho  
kamawa ni bitsakha. Nawe  
uryo kane urekane luundi  
ukyesemulile naabi, nio  
ufunemwo biilyo byeesi  
kane ulye busheele."





Aryo Wele waarusa Adamu ni  
Eva, waabawoona khuurura mu  
mukuunda kumulayi ukwo.  
Lwekhuuba ndi boonakisa,  
baryo baawukhanisibwa  
khukhwaama khu  
Wele-Uwaana-  
Buulamu!



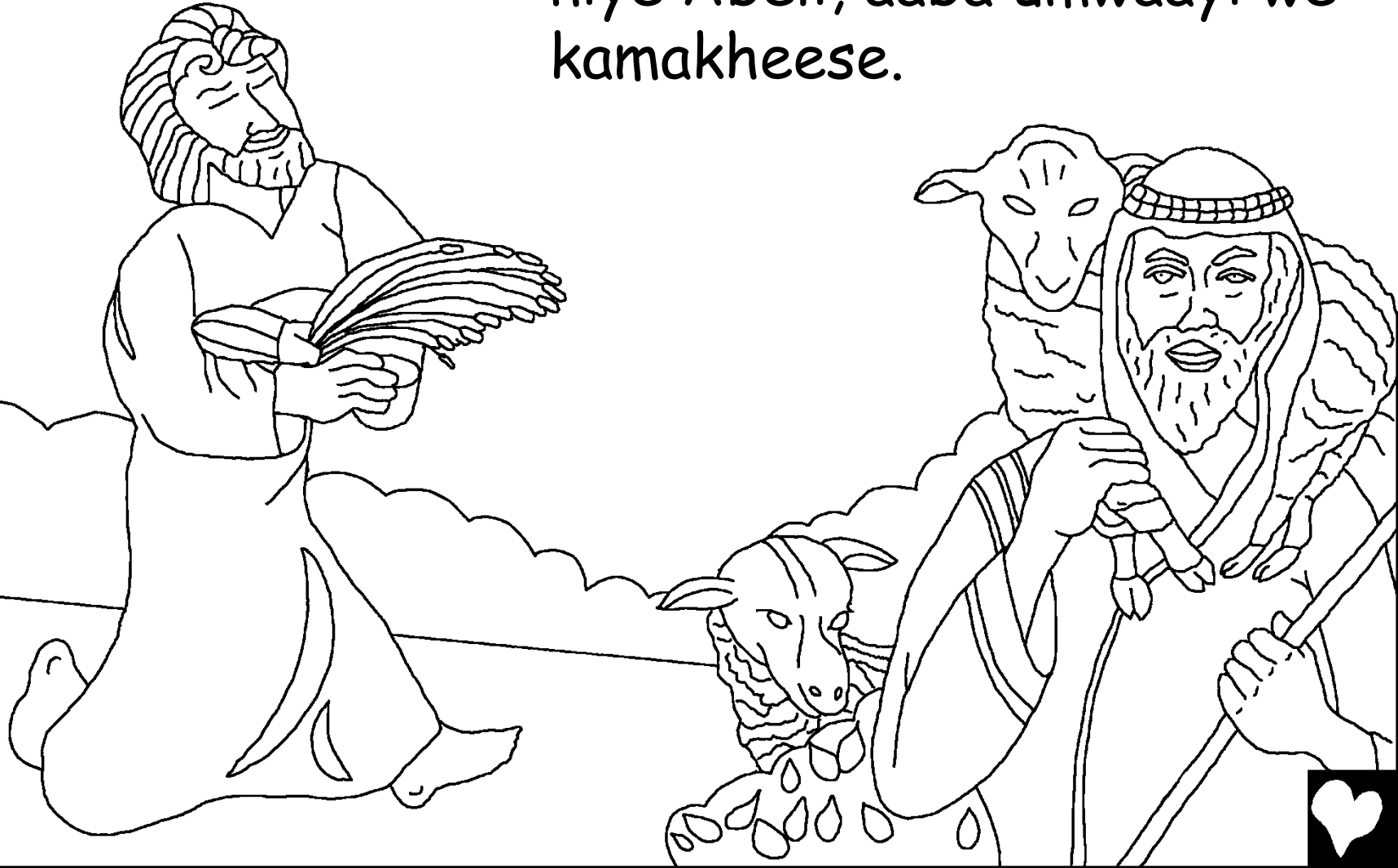


Aryo Wele waarawo

luurima lulumweekhamweekha  
khuubakhingilila bakheenjilamwo  
ta. Lwanyuma wele waabakholela  
Adamu ni Eva bikwaaro bye  
kamahaafu. Ne kamahaafu  
kano Wele  
aakamisa  
waheena?



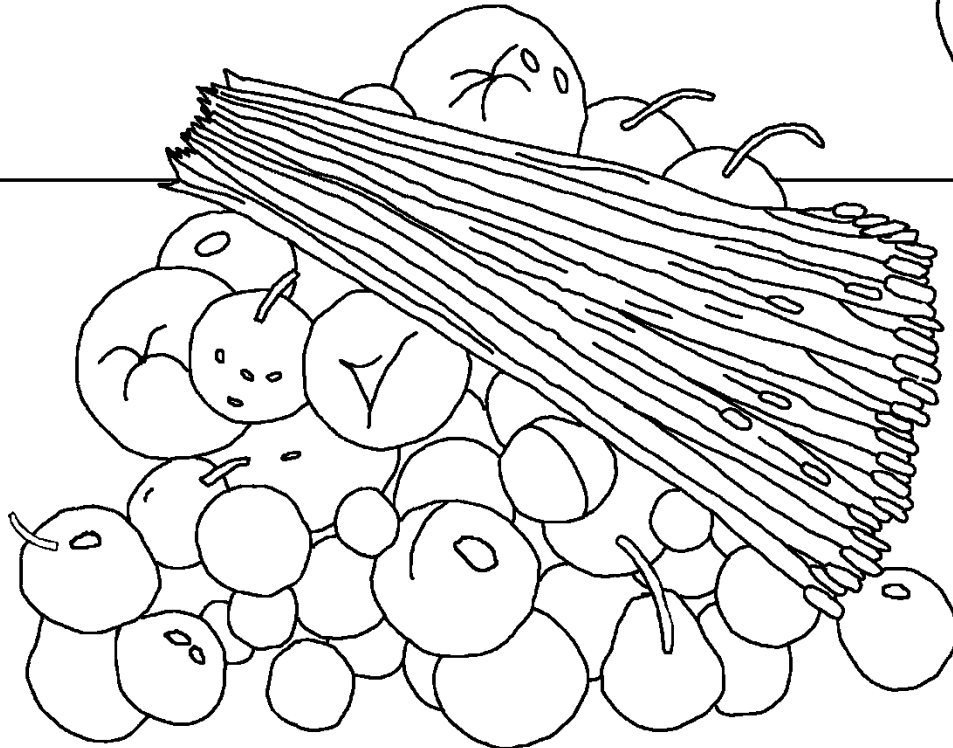
Imbuka ni yoola, Adamu ni Eva baafuna babaana.  
Umusooleli waabwe umukiboole, nga niye Kayini, niye  
uwaba umulimi. Umusooleli waabwe uwe khaabili, nga  
niye Abeli, aaba umwaayi we  
kamakheese.



Shifukhu shitweela, Kayini waareera  
biilime byeewe isi Wele nga shiwaanwa. Abeli  
naye waareera bibiifura buulayi bye khu makheese  
keewe, nga shiwaanwa isi Wele.  
Ne Wele waasiima Abeli ni  
shiwaanwa  
sheewe.



Wele s'ekhoyela Kayini ni  
shiwaanwa sheewe ta. Isho  
shaakila Kayini waakhalala naabi.  
Ne Wele waareeba ari, "Iwe  
n'ukhola shishiindu shiilayi, nawe  
singene bakhufukiilise ta?"

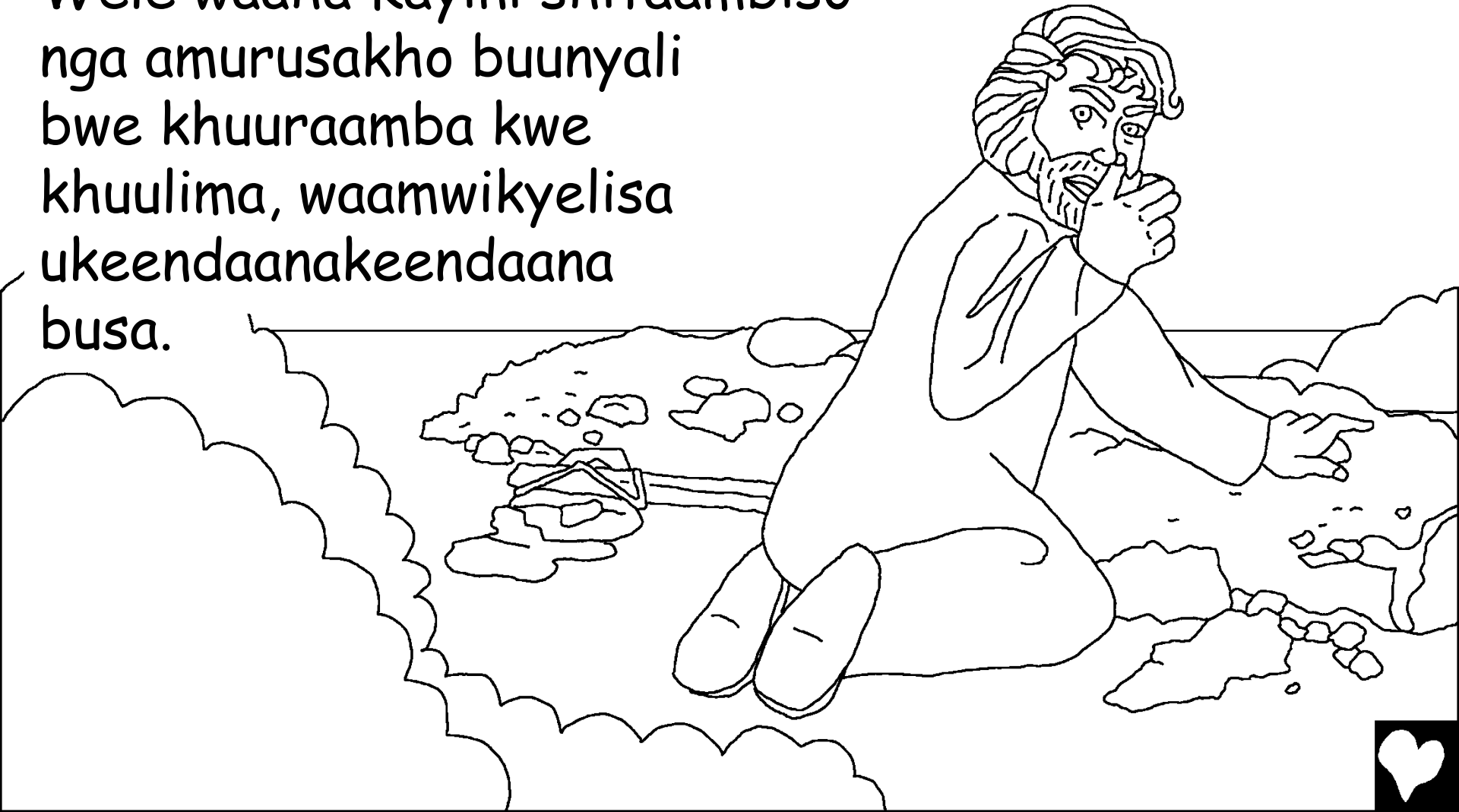


Lirima Iya Kayini silyawawo ta.  
Imbuka yabirawo ifwiiti iri,  
wenyukhila Abeli anga bali mu  
mukuunda, - waamukhoonya.



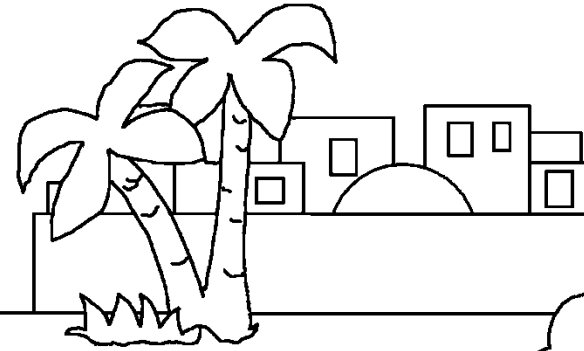


Kila Wele akanikha isi Kayini lundi ari, "Waandaayo Abeli ali waheena?" Kayini naye weelamwo Wele ari, "Ise siimanya ta. Ise niye umuliindi wa waandayase?" Wele waaha Kayini shitaambiso nga amurusakho buunyali bwe khuuraamba kwe khuulima, waamwikyelisa ukeendaanakeendaana busa.



Aryo Kayini waakeenda waarura mu moni  
tsy'Omukasya. Aayilayo umukhaana wa Adamu  
ni Eva. Basaalayo babaana, baakhola  
tsiingo. Lwanyumakho, babetsukhulu  
ba Kayini, ni bisoni ni bimiila,  
baasaalana

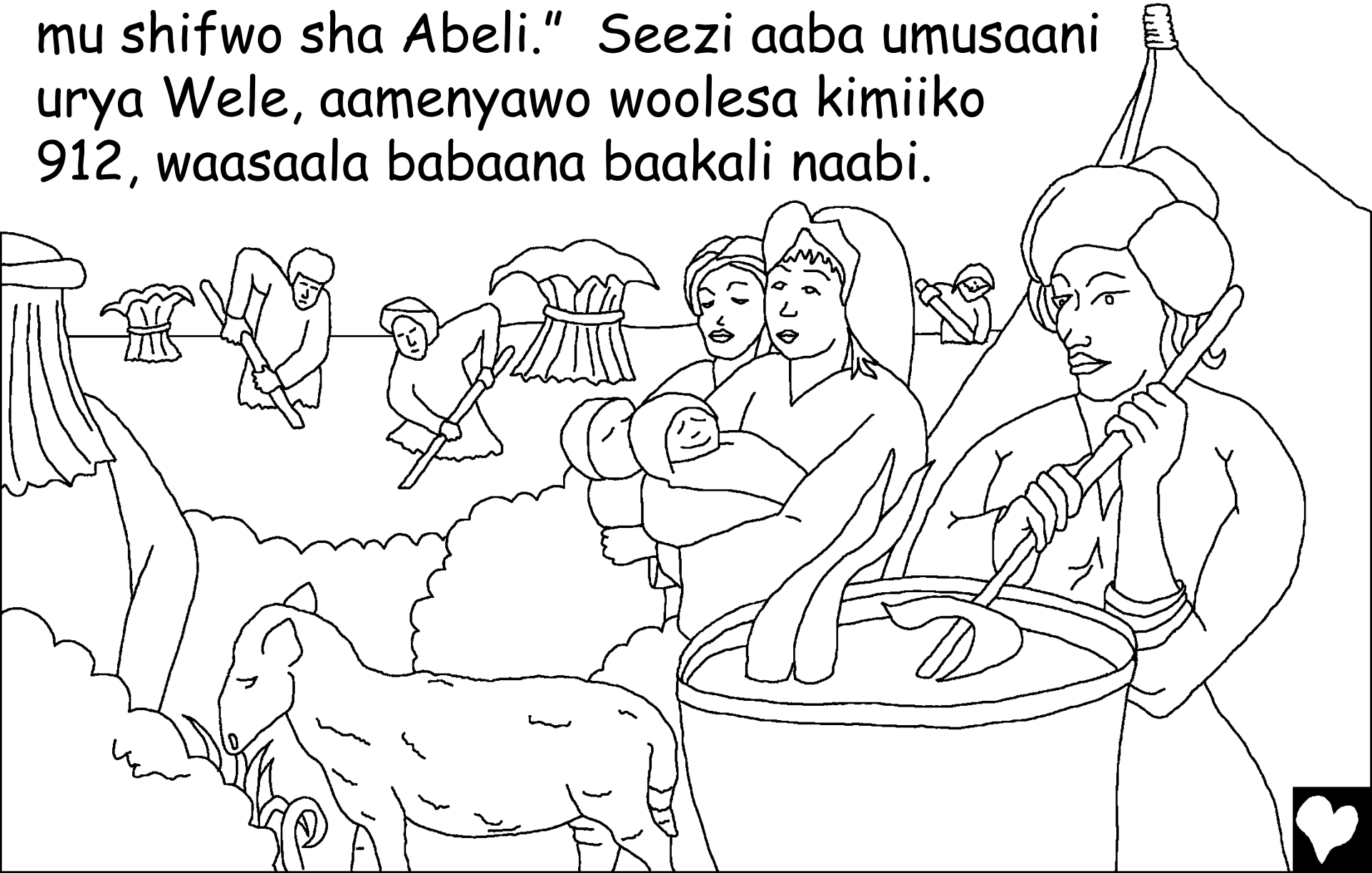
beetsusa  
shiriimba  
sheesi  
aaraakikhisawo.



Biba biryo, Inda ya Adamu ni Eva yaaba  
ibalaaha khaangu naabi. Mu biseela ibyo,  
babaandu baamenyatsakawo imbuka  
indeeyi naabi khuufuurisakho shaleelo  
shino.



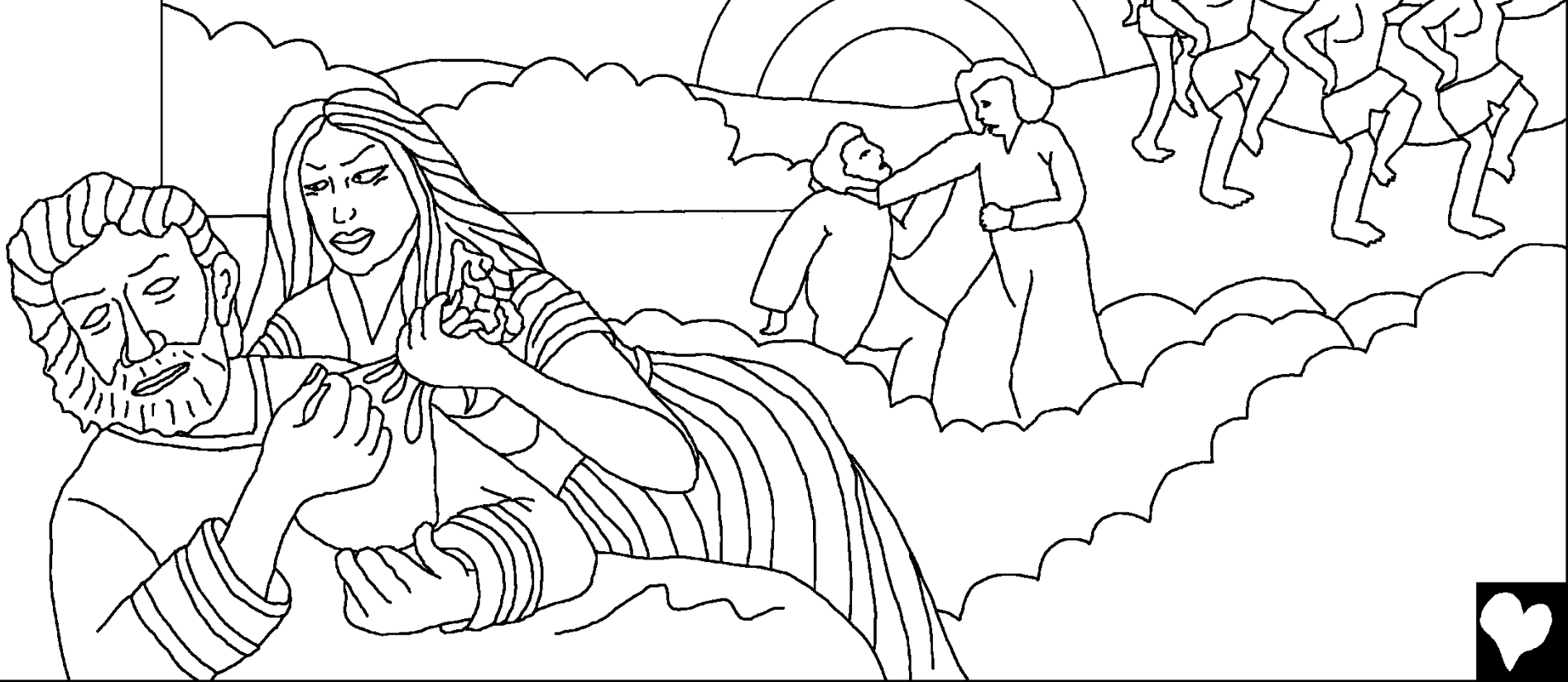
Ne ni baasaalayo umwaana umusiinde ukuundi, Eva waaloma ari, "Wele waambeele ise Seezi khukhwiila mu shifwo sha Abeli." Seezi aaba umusaani urya Wele, aamenyawo woolesa kimiiko 912, waasaala babaana baakali naabi.



Mu shibala shoosi, babaandu baatsya  
beelosela khuuba baboonaki luukali,  
khukhwaama khu muboolo mutweela  
khuutsya khu kuundi. Khu  
ntsakamwo, Wele waakhalawo  
khuuhesa babaandu  
boosi ni ...



... ni bisolo byoosi ni binywiinywi  
byeene. Wele wesonesa  
lwashiina aabumba umuundu.  
Ne yabayo umusaani mutweela  
yenyene uwekhoyesa  
Wele ...



Umusaani yuno abe bamulaanga bari Nowa.  
Niye aaba umwitsukhulu wa Seezi, naluuundi  
Nowa yuno aaba umusaani  
umukhosefu, ukhaabakho ni  
bubwoonaki bwoosi ta.  
Niye aakeeda naabi  
ni Wele.



Naluundi niye umweene aaleekela ni basooleli  
beewe baataru khuuba baawolu isi Wele. Kwa  
luno, Wele waakhola in'goonan'goona  
khuuraambisa Nowa mu buli  
saambo yoosi, iyiyaangisa  
luundi iyaburaawa  
naabi!





Khuurakikha khwe Kumutaambo

Luukano khukhwaama mu Lomo ya Wele,  
I Bayibuli

Inyoolekhana mu

Khuurakikha 3-6

“Biilomo byoowo nga byeenjiile bireera  
buwaanga.” I Zabuli 119:130





Intasakamwo



2



60



Luukano Iwe Bayibuli luno lukhuboolela ifwe bibiihaamba  
khu Wele weefwe umukhulu, uwakhubuumba ifwe naluundi  
uukhukana iwe umumanye niye.

Wele waamanya ari ifwe khukhola bibiindu biibi biikali, byeesi niye  
umweene alaanga ari bibyoonako. Shitaambiso shye bibyoonako nikhwo  
khuufwa, ne Iwekhuuba Wele akhukana iwe naabi, waarumana Umwaana  
weewe Mutweela Yenyene, Yesu Kristo, khukhwiitsa khuukhufwiilila khu  
musalaba, aryo niye waataambisibwa Iwe bibyoonako byoowo. Lwanyuma  
Yesu waalamukha khukhwaama mu bafu weelayo Mwikulu! Iwe n'ufukiilisa  
Yesu, waamuloomba khuukhwiyakhila bibyoonako byoowo, kane ashikhole!

Niye Umweene kane eetse, amenye mwiiwe aluno ari,  
ni nawe umenye ni naye biilo ni biilo.

N'uuba nga waafukiilisile uri buno buli bwan'gali, loma shino isi Wele:  
O Yesu, ifukiilisa indi iwe uli wele, ne wekyela umuundu khuufwa Iwe  
bibyoonako byase, ni na ari uliwo umulamu luundi. Ari yinjila mu bulamu  
bwase, wiyakhile bibyoonako byase, nio inyalise khuuba ni buulamu  
bushaakha alunaari, nio lube lutweela niitse imbe ni nawe biilo ni biilo.

N'unjeete imbe uwuliilisa byeesi uloma, imbewo khulwoowo  
nga umwaana woowo. Amiina.

Soma I Bayibuli, ukanikhatsake ni Wele buli busheele! Yokana 3:16

