

Bayibolu Yawanyana Anyanya
yinakushimuna

Kuvwalika
kwa Yesu



Ayisonekeli kudi: Edward Hughes

Ayilumbulula kudi: M. Maillot
Alastair Paterson

Anakuyizatisha kudi: E. Frischbutter; Sarah S.

Ayituntulula kudi: www.christian-translation.com

Wunu mukanda awidisha kudi: Bible for Children
www.M1914.org

©2022 Bible for Children, Inc.

Wuswa: Mudi nawuswa wakukopolola iyi nsañu,
neyi chakwila hiyakulandishaku.



Kuyaaka yakunyima, Nzambi
watemesheli kañelu
Gabeleli kuya kudi
chañadima wamubanda
wezhina da Maliya.



Wamulezheli nindi, "Wakav-
wala mwana weyala nawa
wakamutumba ijina dindi
neyi Yesu. Akamutena
nawu Mwana ka Muk-
wakubadika.

Wakayula
haya
nyaka."



Chañadima wamumbanda
wahayamini wehwili nindi,
"Chumichi chikamwekana
ñahi? Ami kanda
nidimoneñahu
neyla."



Kañelu wamulezheli Mariya
nindi mwana wukafuma kudi
Nzambi. Wukavwalika
chakubula iyala.



Dichi kañelu wamulejeli Mariya
nindi musonyindi Elizabeta
wakavwala mwana
muwushinakazhi
windi. Ichi
chadiña
chiyamisha.



Chimwahitili mafuku,
Mariya wamuhempwili
Elizabetha.

Amuhamekeli
Nzambi wezhima
wawu hamu.



Mariya amoteli kudi
iyala wezhina
daYosefu.

Yosefu waneñeli
chelukiliyi nindi
Mariya nemiti.
Watoñozhokeli
nindi anamwimitishi
kudi iyala wacheñi.



Muchilota, kañelu kaNzambi wamulezheli
Yosefu nindi iwu mwana wadiña
mwana kaNzambi. Yosefu
amulezheli kumukwasha
mariya kumuhemba Yesu.



Yosefu wamukuhweleli nakumwovwahila
Nzambi. Nawa
wahembeli
ninshimbi
zhetuña.



Hamuloña wanshimbi zhazhiha,
Yosefu ni Mariya ayili
kumbaka yawu, mu
Beteleme
kulonda



akadisonekeshi.



Mariya wadiña
kwakwihi
nakusampuluka.



Dichi Yosefu
wakañenyi kuwana
kapeka. Mutupeka
mwakukaama
enyi mwenzeli.



Nkumininaku Yosefu wawanini
mwadiilaña yimuna. Dimu
mwavwalikilili Yesu.



Mama yindi wamuvuñekeli nakumukamika
mwiluña mwahembelaña
yakudya yawayimuna.



Kwiluña damukamwihi, atubiña adiña
nakubiña yimuna. Kañelu
kaNzambi hakumwekana

kudi wena
nakuyilezha
nsañu
yayiwahi.



"Muloña dalelu mumusumba waDavidi
munavwaliki chamwinu chenu,
diyi Kristu Mwanta.
Mukuwana mukeki
anamukaamiki
mwadilaña
ayimuna."



Kukasumuka, añelu amakwawu atooka
amwekeni, anakumushemeka
Nzambi nawu, ...



"Kulema kwiikali kudi Nzambi mwiwulu
nawa hamaseki hekali kuwunda
hakachi kawantu atiyaña
kuwaha."



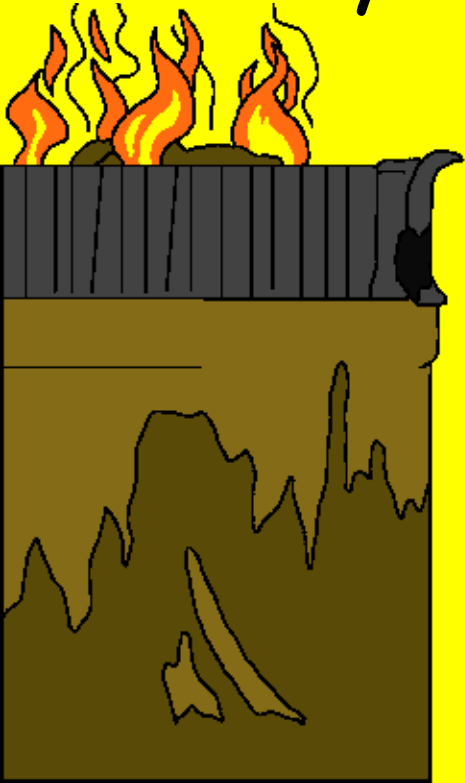
Atubiña anyakeli kuya kwadilaña ayimuna.
Chamumwenuwu mukeki alejeli antu ejima
ahumañenuwu munjila mazu ayilejeluwu
kudi añelu hadi Yesu.



Chimwahitili mafuku 40,
Yosefu ni Mariya
amutwalili Yesu
mutembeli yamu
Yerusalema.



Mutembeli iyala wezhina
da Shimona wamuhame-
keli Nzambi hadi
mukeki, ilaña Ana
kashinakazhi,
ñamba yamwanta,
niyena
wamush-
imekeli.



Wezhima wawu elukili
nawu Yesu wadiña Mwana
kaNzambi, Chamwinu
wakaninuwu.

Yosefu wahinini
mulambu
watuzhila
tuyedi.



Iwu dimulambu wetejeluwu
kwesekezha nanshimbi
ya Nzambi wateleleli
kuhana antu
atuzweñi hakuleta
mukeki wunavwaliki
kudi
Mwanta.



Chimwahitili
mafuku,
katumbwa
kalombweli

Amayala Akamaana
kufuma Kumusela
waYerusalema.





Hiyakwihula nawu, "Mwanta
wawaYudeya wunavwaliki
wudi kudihi? Tunenzi
nakudifukula kudi yena."

Mwanta Herodi
watiyili mpuhu
yanowu aMayala
Akamaana.
Dichi wakameni,
wayilezheli nindi
amutemesheli mazu
neyi anamuwani
Yesu.



“Kulonda
ninami nakaayi
nakudifukula
kudi yena.”

Ilaña watwambili.
Herodi wakeñeleña
kumujaha Yesu.



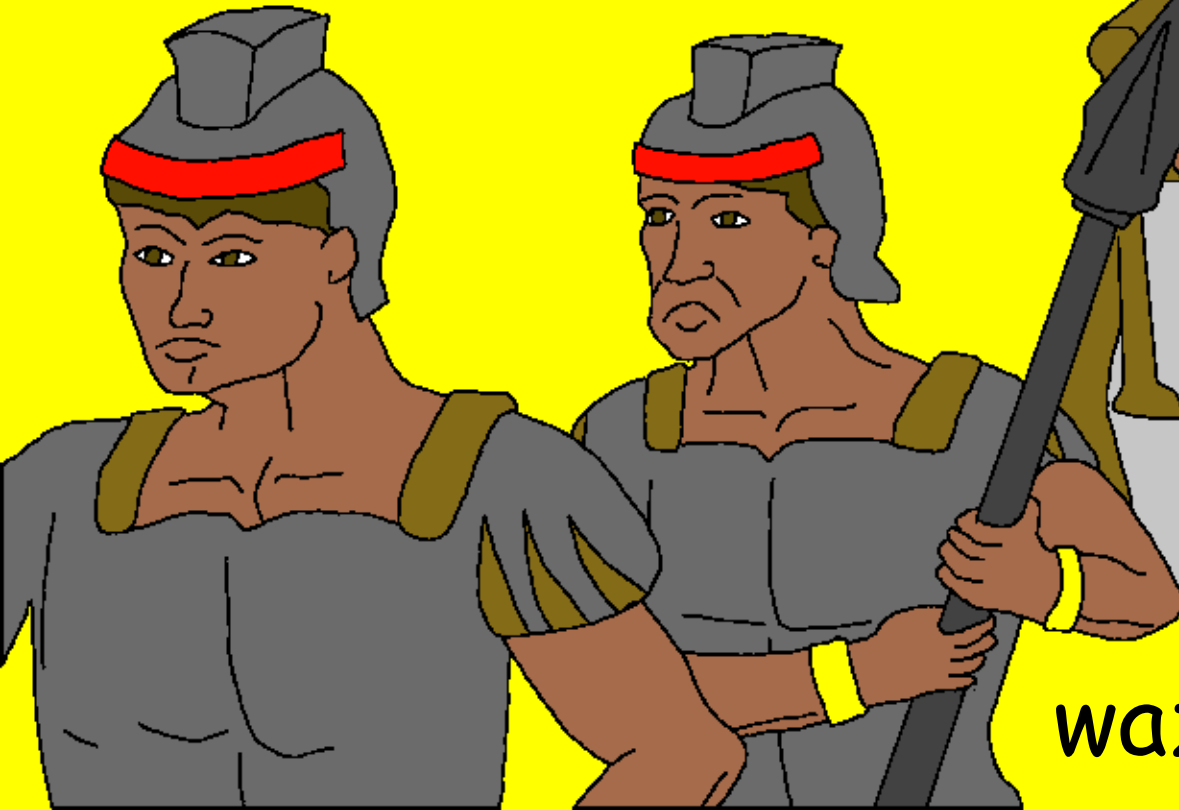
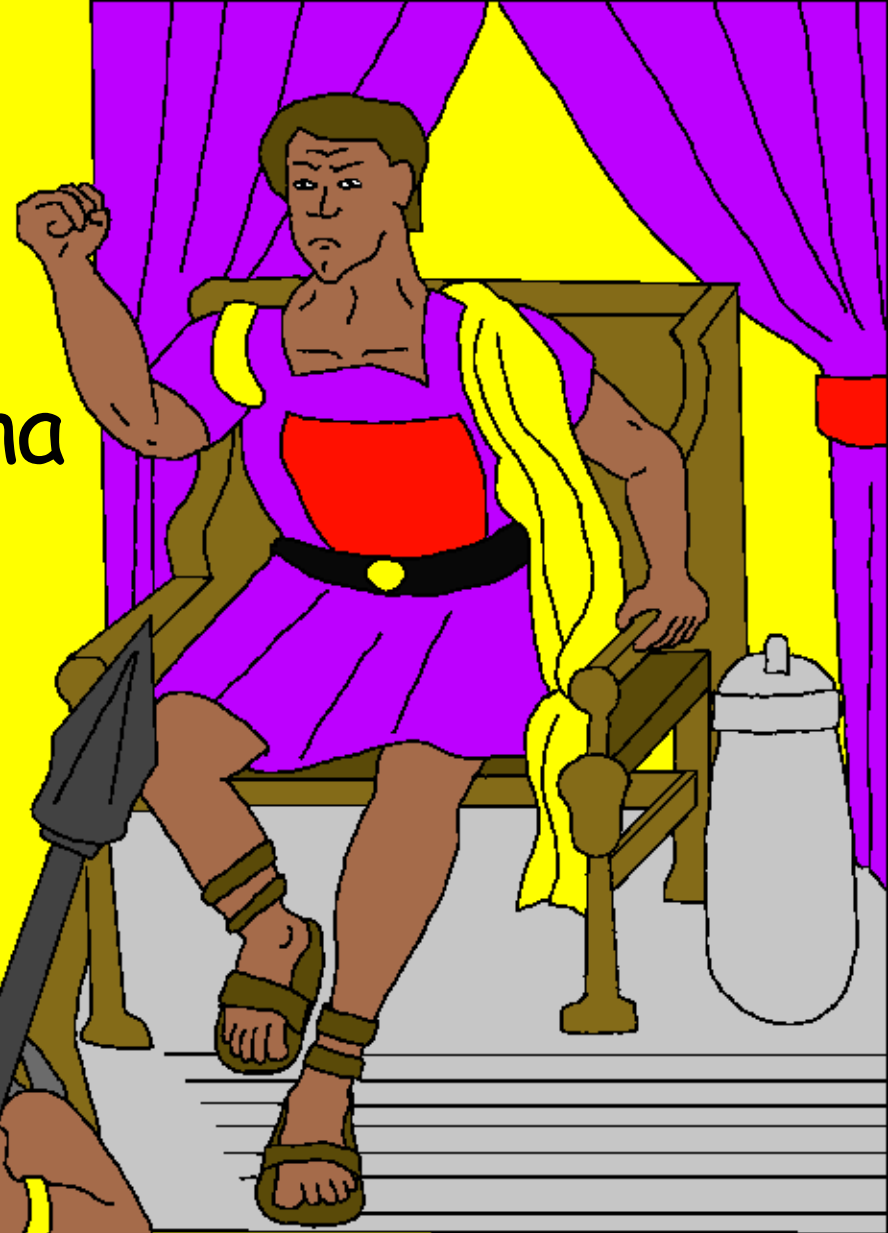
Dichi katumbwa kayilombweli
Amayala Akwakuhoña natutumbwa
kwitala kwadiña Mariya
naYosefu nimukeki.



Hiyakuwa hamaseki nakudifukula,
dichi amwinkeli Yesu yawaana
Yawuru nimanaña
evumba dadiwahi.

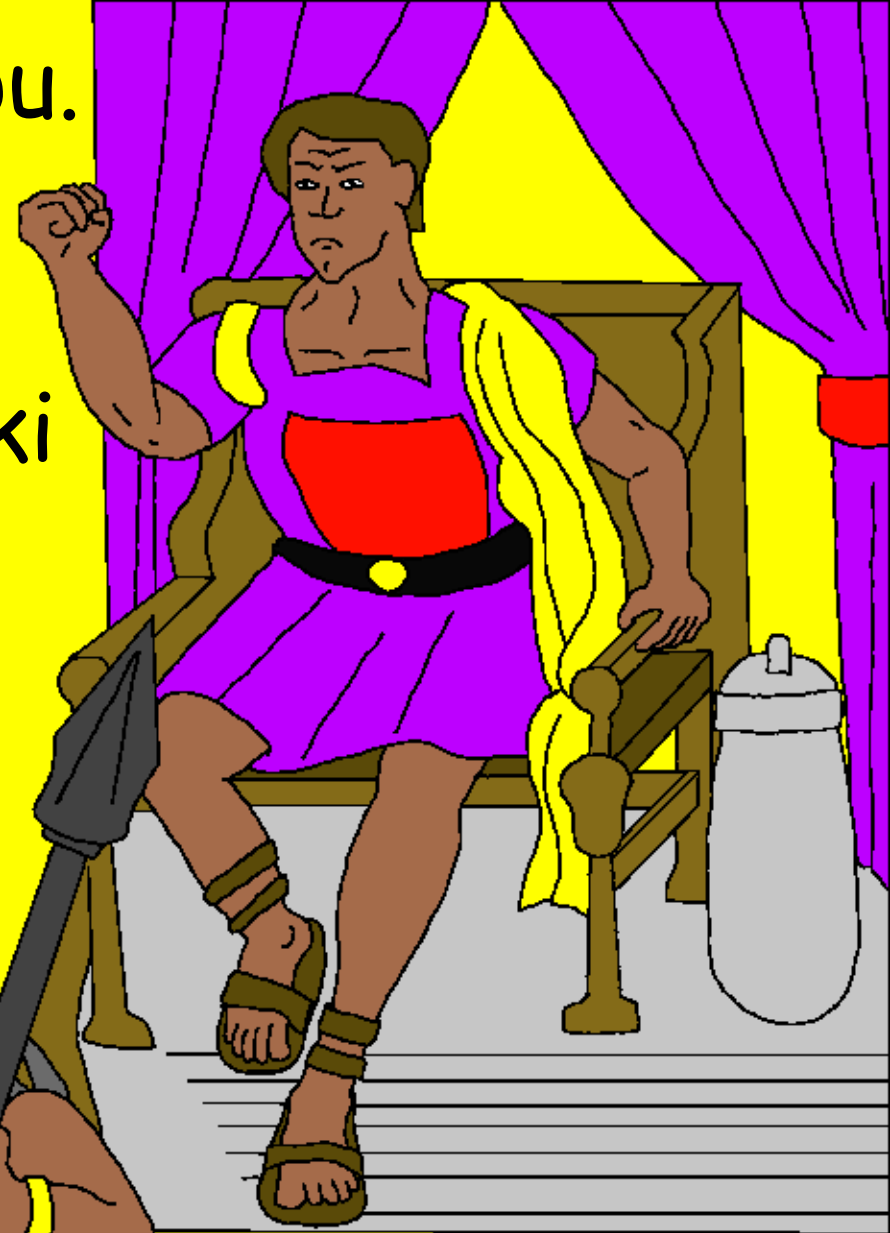
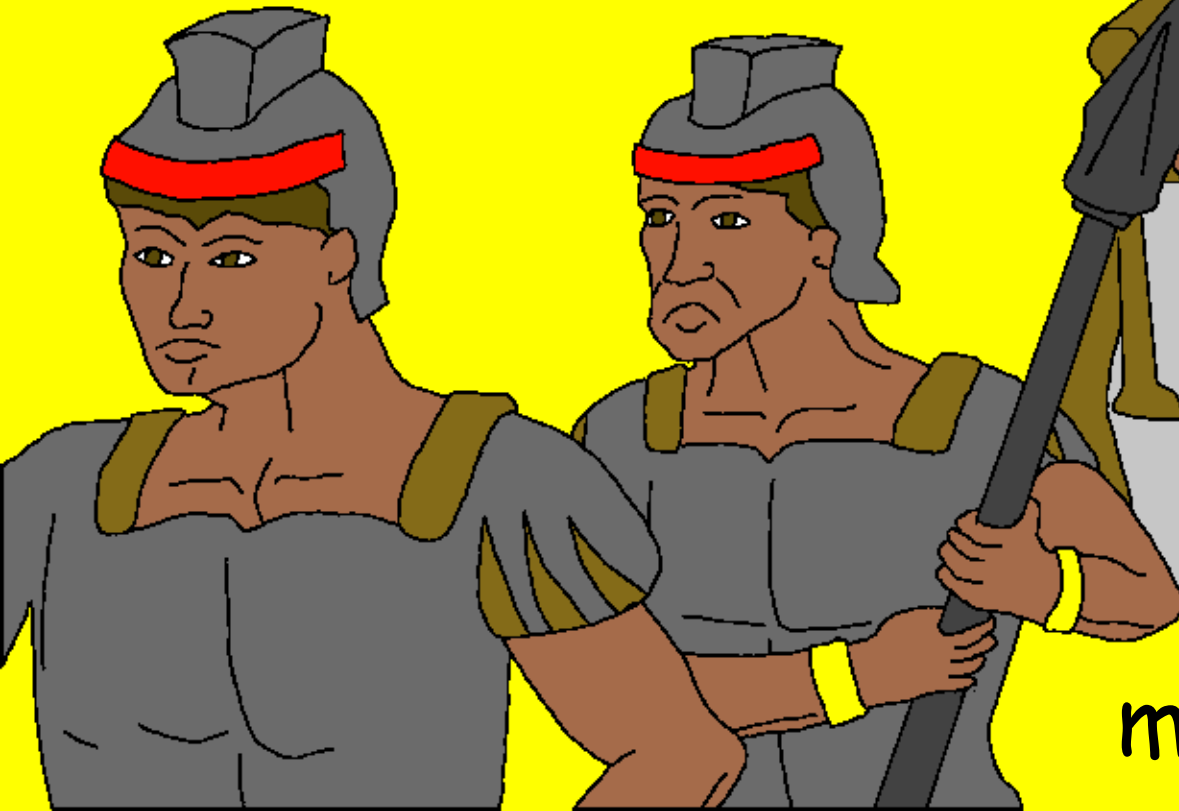


Nzambi wayilejeli
amayala akwakuhoña
natutumbwa kufunta
kumukala wawu kuzatisha
njila yacheñi. Herodi



wazuwili chikupu. ❤️

Herodi wazuwili chikupu.
Wafwilileña kujaha
Yesu, iwu mwanta
watama wajahili anyikeki
awamayala ezhima



muYerusalema.



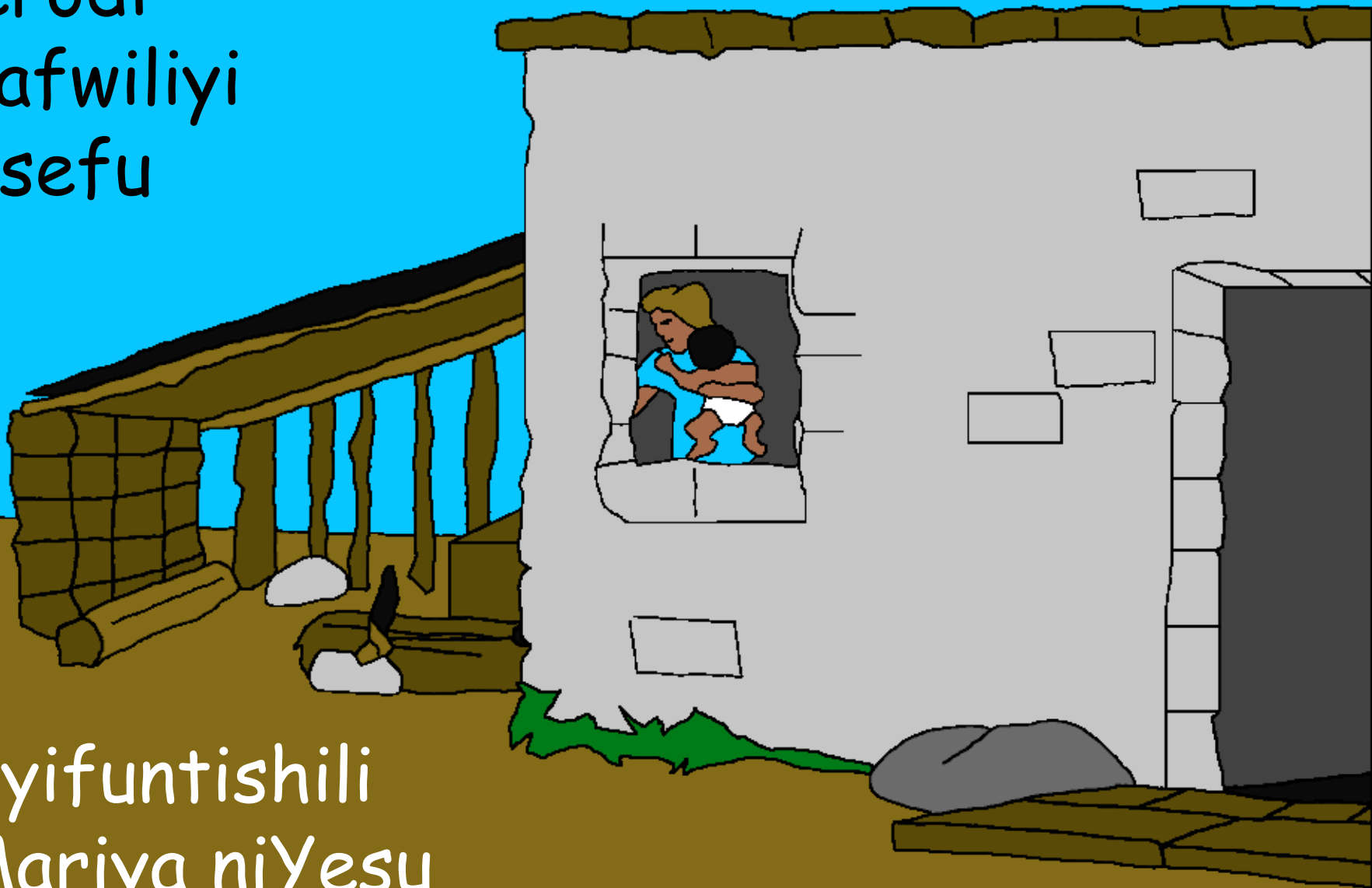
Ilaña Herodi
wakañenyi kujaha
Mwana kaNzambi!
Muchilota, Yosefu
amusoñamishili
nawa watwalili
Mariya niYesu



kwiluña
dacheñi muEjipitu.



Herodi chafwiliyi Yosefu



wayifuntishili
aMariya niYesu
kufuma kuEjipitu.



Ashakamineña
mumusumba
wanyanya



wamu Nazareta,
kukamwihi nakaluña
lwiji kekala kuÑalaliya.



Kuvwalika kwa Yesu

Nsañu yaMwizu daNzambi, Bayibolu,

yawanikaña mu

Matewu 1-2, Luka 1-2

"Kusoloka kwaMazu eyi kwaletaña
chezhezhi." Masamu 119:130



Hanakumini
Nsañu



Iyi nsañu yamu Bayibolu yinakutulezha hadi
Nzambi yetu wamuwahi watuleñ'eli nawa
nakukeña enu mumwiluki.

Nzambi weluka nindi twekoñaña yuma yatama,
Yatenañayi nindi nshidi. Wuloku wanshidi
hikufwa, ilaña Nzambi waswezha kuyikeña
Watemesheli mwanindi wumu hohu, Yesu, kwinza
nakufwila haKulusu nawa wayandilili nshidi zheni.
Dichi Yesu wasañukili nawa wafuntili Mwiwulu
mwashakamañayi! Neyi mwakuhwelela mudi Yesu
nawa neyi mumulomba wukwanakena nshidi yenu,
Wukuyanakena! Natweshi kwikala nanenu, ninenu
nawa mukwikala nindi haya nyaka.



Neyi munetezhi nenu iyi nsañu yalala,
mulezheni Nzambi nenu:

Mwanta Yesu, nakuhweleli nami Yeyi Nzambi,
wenzhili neyi muntu kulonda kufwila nshidi
zhami, nawa wasañukili. Nakutambwili muwumi
wami nawa anakenaku nshidi zhami, kulonda
nekali nawumi wawuha, nawa nakekali naneyi haya
nyaka. Nkwashi nikwovwahili nendeña naneyi
hamu neyi mwaneyi. Amena.

Tañenu Bayibolu nakuhosha na Nzambi ifuku
niifuku! Yowanu 3:16

