

www.BibleForChildren.org



Jowani 14



“Mulese okubilaela mu micima yenu, mupumene mwa Nyambe mane mupumene ni mwa mene ngeso. Mu ndoo ya Sitange emizuzu ni yakupula, kambe kasa ngeso kambe kanisi myambela ngeso nji kame nikatile oka milukiseta esibaka.”



“Cwale aba nita oka milukiseta esibaka, mbani uku kame mukumishimbela kwa mene nji mukaikale nange oko nili.”



Mene Jowani, omwabenu woyo oku tabela naanyi
mwa Jesu Kilesite amayando ni mubuso niku
tatelela no kongola, kame nina

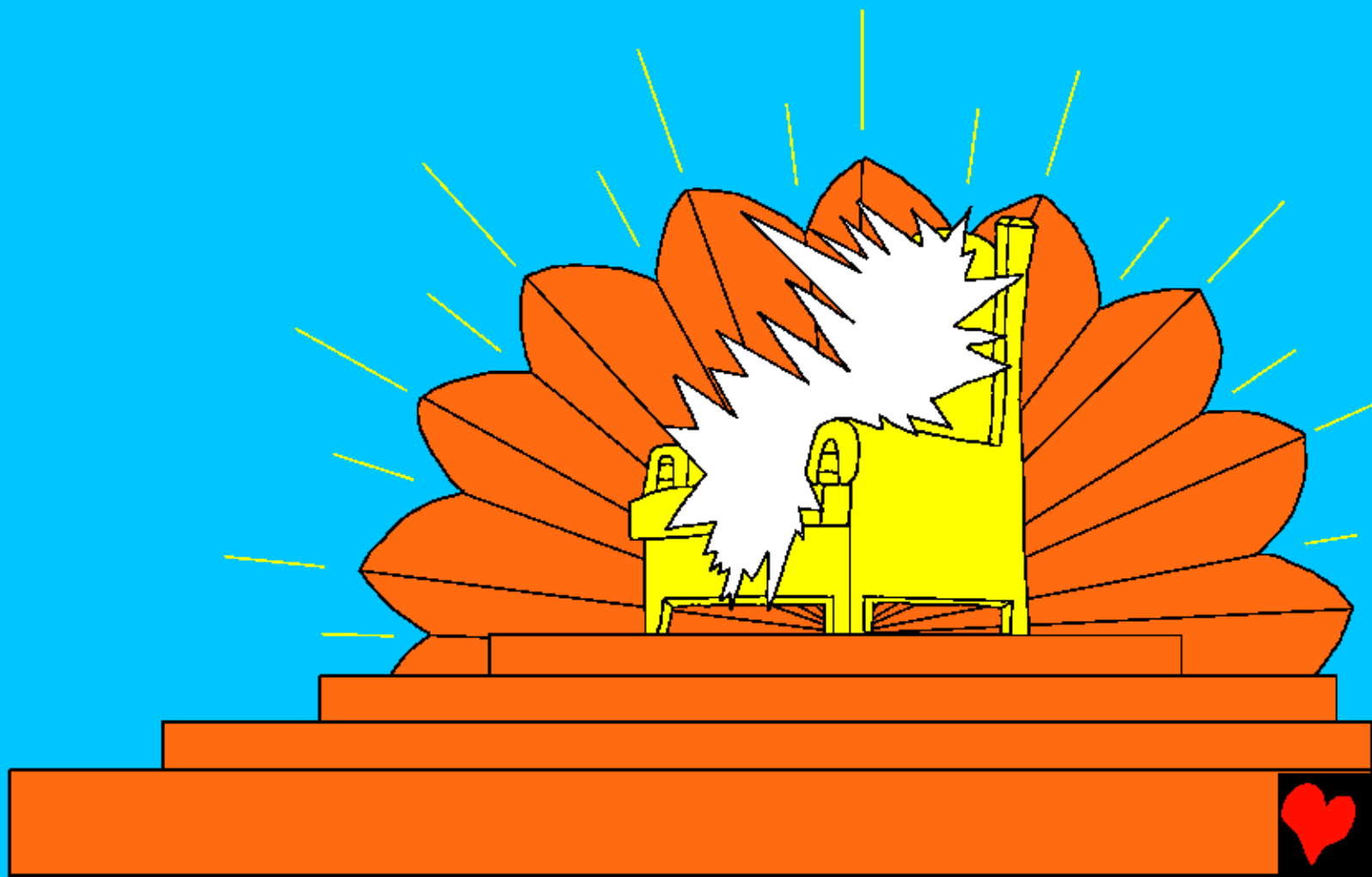
kubeekiwa ba sooli
siisaniwa nji Patimosi



omubonda no
kwamba eliywi Iya
Nyambe ni mulibaka
no kupaka Jesu
Kilesite.



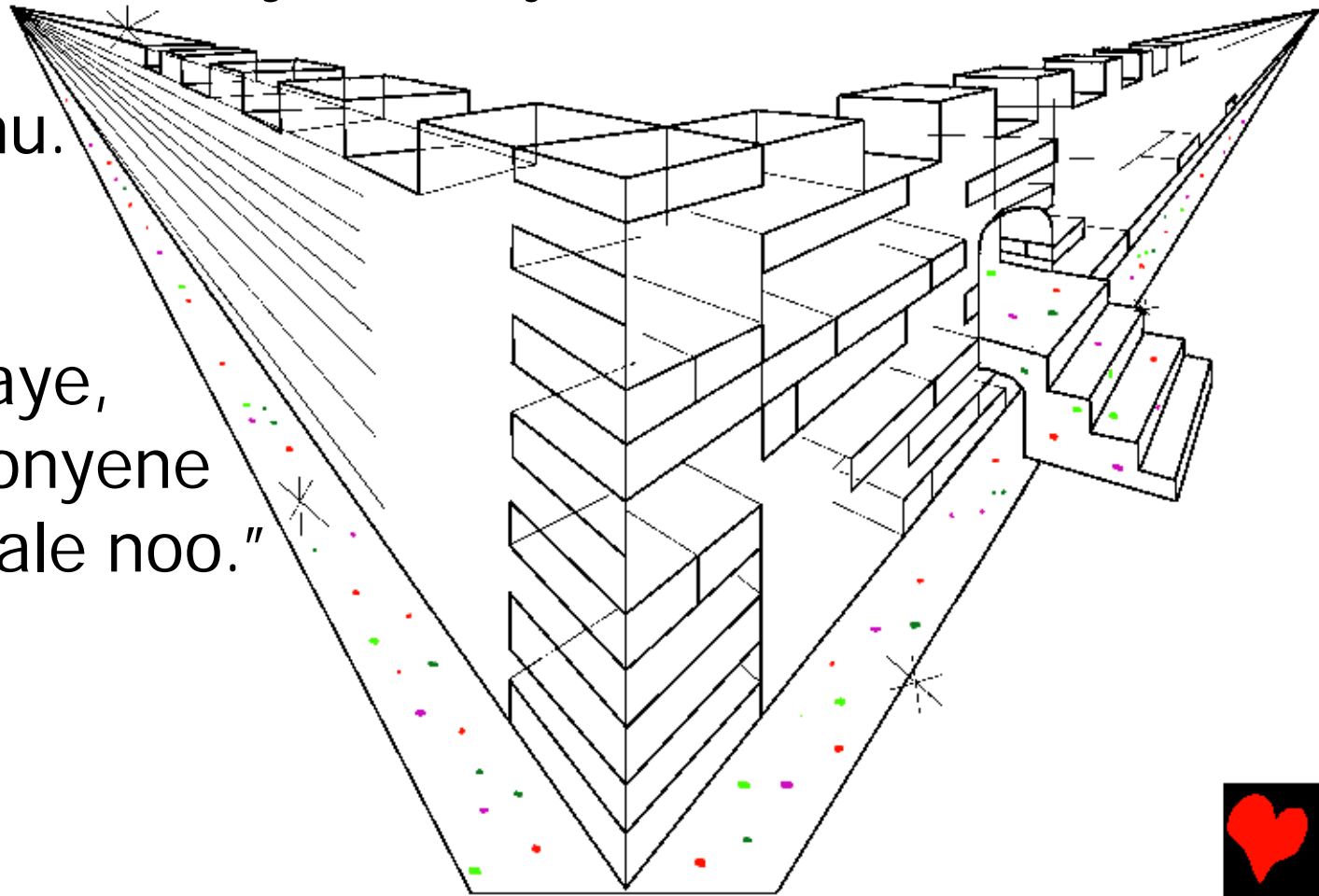
Ababo Emebo sebeli inishimba. Cwale sebeli ni mona olubona lubekilwe mu wilu, mi kame kwikalile omunu ba lubona.



Cwale sebeli niyupa eyumbiwa yonje mu wilu, ni mu litunga mane ni munji no litunga, ni mu liwate neyo ilimo, mi yonje eyamba nji, "Kwa yonyene oikalile ba lubona ni ba mukoko, afuyolwe mi akutekiwe, ni kanya, ni maata, no kuta oko no kwaabwa!"



Cwale sebeli ni mona omuleneñi no kukena,
Jelusalema no ubya, oka tundile ku wilu kwa Nyambe,
yo kutukisite kanyi osikukwaliwa woyo oku kabisite
niku tatela mbumwaye. Seli ni yupa eliywi no kuneneba
okutunda ba lubona elyamba nji, "Komumone, omundi
wa Nyambe
kame oli naanu.
Kame saikale
noo, mi kame
satende anu aye,
mi Nyambe yonyene
luli kame saikale noo."



Cwale sebeli oni monisa omusindi no meyi no moyo,
no kukena kanyi kilisitale, aa abuba okutunda ba
lubona Iwa Nyambe nolu no Mukoko ba kaci no ndila
no muleneñi kame ni ku maneku onje no musindi,
esitondo no moyo ni mbuya yaso ikwana elikumi ni
twiili (12), eso sibeeka embuya yaso okweti ni kweti, mi
amamuna no sitondo neli ano ku balisa anu.



Omuleneñi kausikusaela eliywaa simba okweti okubenya mo, kakuli ekanya ya Nyambe eliseli mi elambi yawo ni Mukoko.



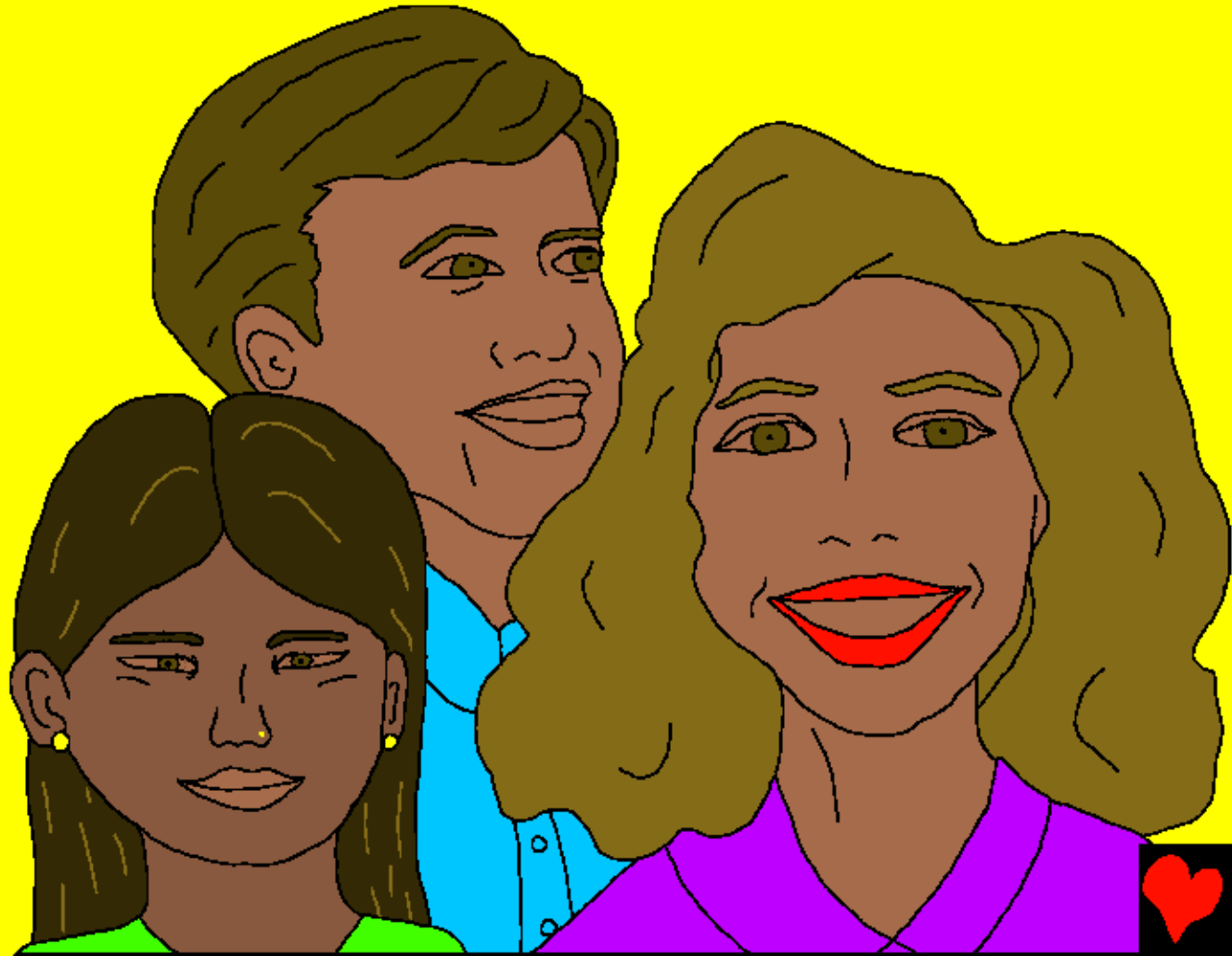
Kono kakwisa esi
nokwakena eso sasi
ingene mo, simba
woyo otenda einu no
kwiiba simba
amapwa kono konji
fela awo añolilwe mu
buka no moyo no
Mukoko.



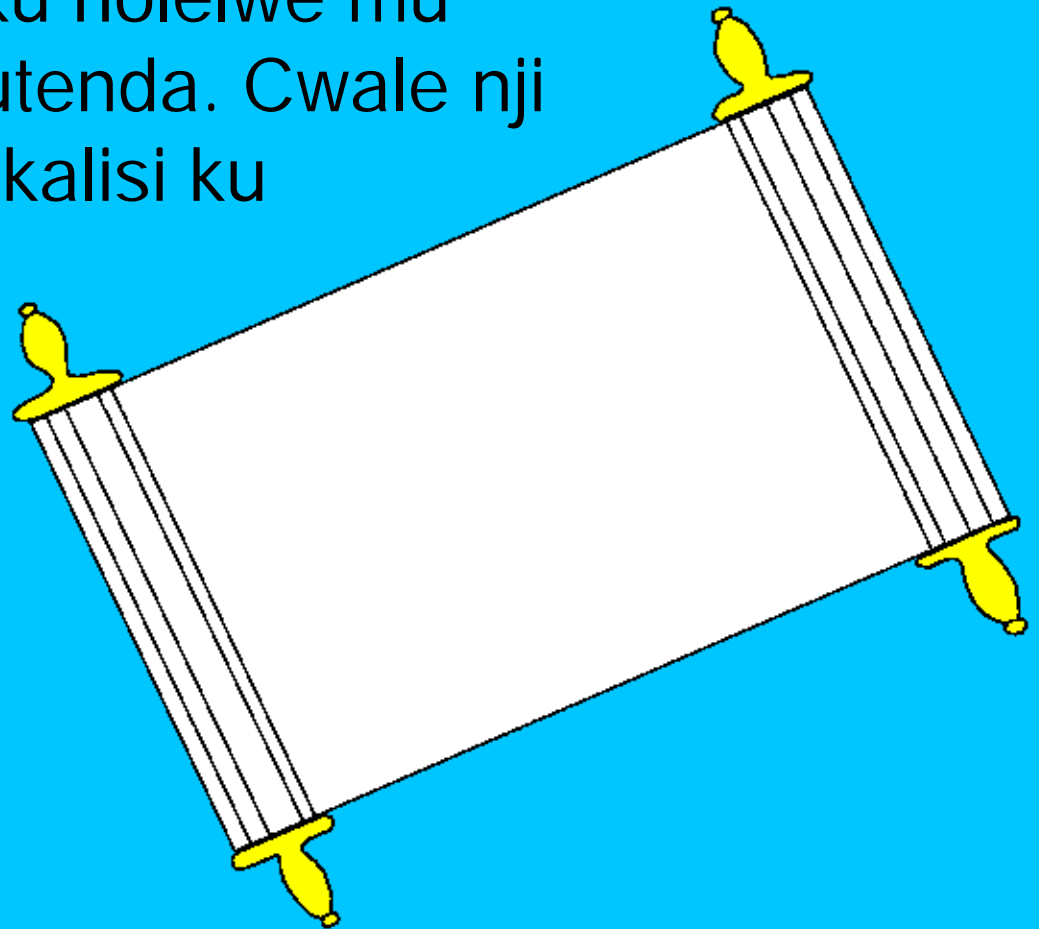
“Kame sa pukute emyooti
ku miyo oo, mi elifu
kalitamba okumonahala
kame, simba okweena ni
kulila simba okuyupa
okukola, kakuli einu no kale
naibwi.”



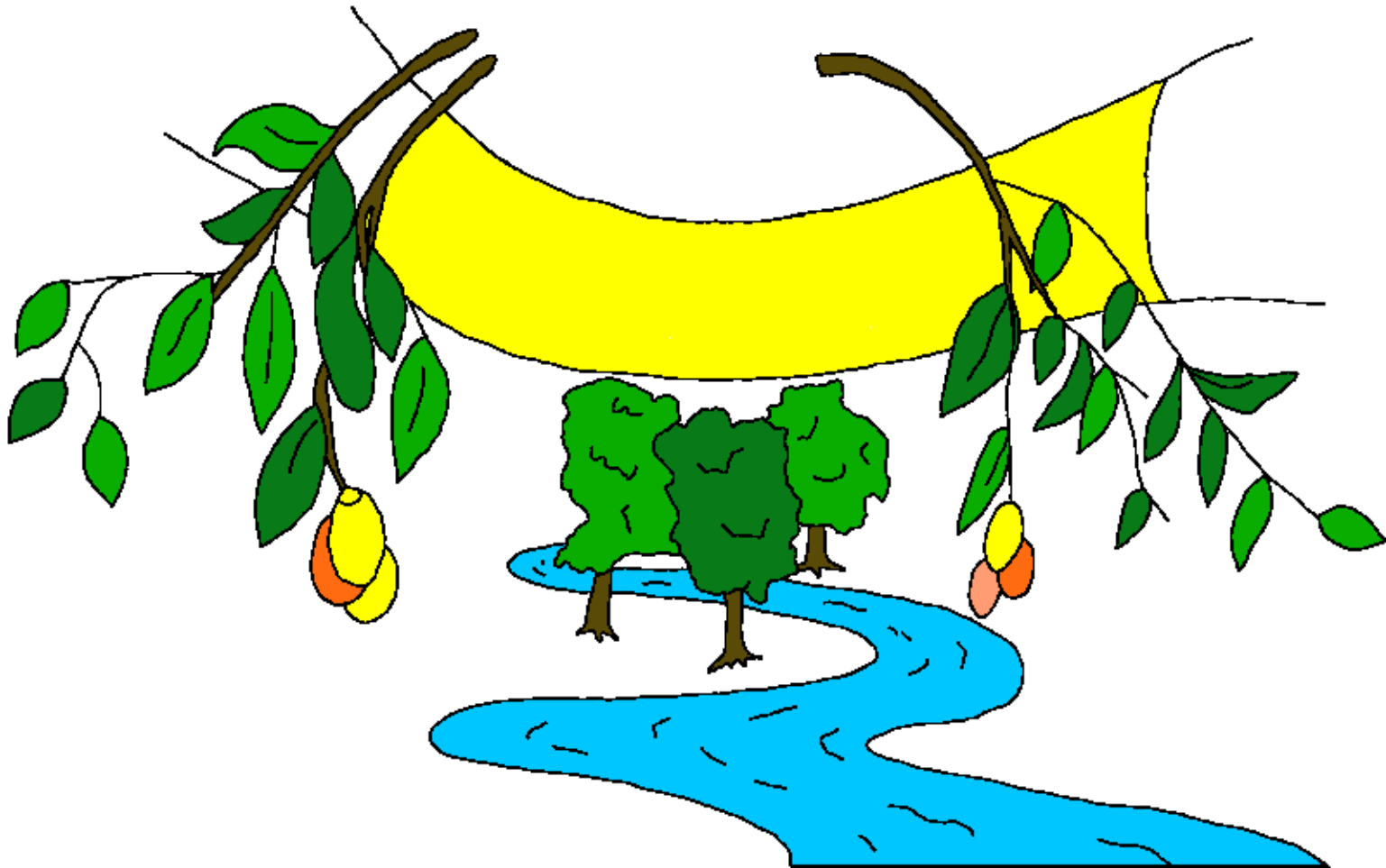
Kakutamba kwikala eso so kutiwa. Kono olubona Iwa Nyambe nolu no Mukoko kame saikalemo, mi abika aye mba mulumbeke. Kame sa mone olubala lwaye mi elitina lyaye kame saliikale ba timala too.



Cwale sebeli ni mona afu, ano kuneneba nacana, aimanine balubala no lubona, mi etibuka sebeli tiyatululwa. Kame kuna kuyatululwa ni buka, mi eyi neli ebuka no moyo. Cwale afu sebeli aatulwa okukumanena nomo ku ñolelwe mu tibuka, kweeyo ana kutenda. Cwale nji elitina no munu yonje kalisi ku waniwa eli ñolilwe mu buka no moyo, kame ana ku kondelwa mu lisa no mulilo.



Emebo ni Mukwati sebeli aamba nji, "Mwiiye!"
Mulesele woyo oyupa aambe nji, "Mwiiye!" Mi
mulesele woyo ofile elinyotwa aiye, mulesele woyo
olakaza ashimbe ameyi no moyo no kwaula.



Kakuli Nyambe kame ana singi onene
elitunga, mane kame ana libi
Mwanaye no libanda, nji omunu yonje
woyo opumena mwa yonyene alese
okufa kono aikale ni mooyo no
kwaabwa.



Maloma 3:23 Kakuli onje kame ana tende esibi mi kame ana kauhelwe ku kanya ya Nyambe.

Maloma 6:23 Kakuli omupuzo no sibi nikufa, kono empo no sishemo sa Nyambe nikuyoya nokwabwa mulibaka lya Jesu Kilesite Ombumu weetu.

Mahebelu 9:27 Cwale kanyi aba kuna laelwe nji aanu onje kame safe kamweya, munyima okubinda sa kwiiye ekatulo.

Maefese 2:8,9 Kakuli mulibaka no sishemo namu yoyisiwa mulibaka no tumelo, mi kasa mulibaka no misebezi yenu mwenyene, eyi nimpo itunda kwa Nyambe. Kasa mulibaka no misebezi yenu, nji cwale omunu yonje akuyeeme.



Maloma 10:9,10 Kakuli nji kame wamba ni kanwa kowe nji,
Jesu ni Mbumu niku pumena mu mucima wowe nji
Nyambe naku mwingula kwaafu, mbuyoisiwa.
Kakuli omunu kame apumena ni mucima waye nji
abeekiwe uyu no kuluka, mi kame apaka ni
kanwa nji ayoisiwe.

Jowani 3:16,17 Kakuli Nyambe kame ana singi onene
elitunga, mane kame ana libi Mwanaye no libanda, nji
omunu yonje woyo opumena mwa yonyene alese okufa
kono aikale ni mooyo no kwaabwa. Kakuli Nyambe kasiku
tuma Mwanaye mu litunga nji atule elitunga, kono neli nji
elitunga liyoyisiwe mwa yonyene.



1 Jowani 5:11-13 Mi oupaki uno okame, Nyambe kame ana tubi omoyo no kwaabwa, mi omoyo owo, kame oli mwa mwanaye. Woyo oli ni mwana kame ali ni moyo, mi woyo wa kwite Omwana Nyambe ka kwite omoyo. Kame ni mi ñolela eyambo eti aanyi mu pumena mu litina Iya Mwanaa Nyambe nji mu limuke nji kame muli ni moyo no kwaabwa.



Jowani 14; 2 Makolinte 5; Sinulo 4, 21, 22

Storyline by: Edward D. Hughes

Illustrated by: Lazarus
and Alastair Paterson

Adapted by: Sarah S.

Luyana NT (lyn) TWFTW

<https://www.bible.com/bible/4077/MAT.1.LYN>

©2026 Bible for Children, Inc.

www.M1914.org

www.bibleforchildren.org

