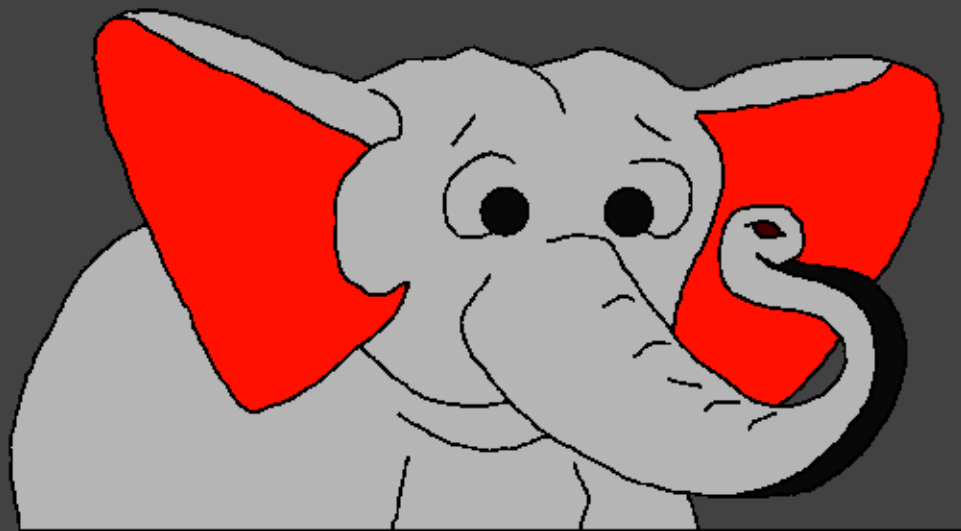


Iuku ria Ngai ria twana
Ribureterete

Riria Ngai ombire
into bionthe



Riandikitwe ni: Edward Hughes

Rionanitwe ni: Byron Unger; Lazarus;
Alastair Paterson

Ruamukiri ni: Bob Davies; Tammy S.

Ritauritwe ni: Florence K. Arimi

Riaritwa ni: Bible for Children
www.M1914.org

©2020 Bible for Children, Inc.

Laisence: Niwitikiritwe gukobia kana kuritithia
rugono ruuru, bunka ruti rwa kwendwa.



Nuu watuumbire? Bibiria, kiugo
kia murungu, gitwiraga naaria muntu
wa mbere aumire. Tene muno,
murungu ombire muntu
wa mbere
buru

aramwita
Adamu.



Murungu ni ombire Adamu na muthetu
jwa nthiguru. Riria Murungu auirire
miruki ya mwoyo kiri Adamu, arambiriiria
gutura mwoyo. Ni acionire
muundene
jumuthongi

muno
jwetagwa
Eden.



Mbere ya Murungu oomba Adamu,
niombite nthiguru inthongi muno
iojurite into bia kurigarania muno.
Ikinya kwa ikinya, Murungu aroomba



guntu

kwaari na irima na mabari muno,
maua jari ma ...

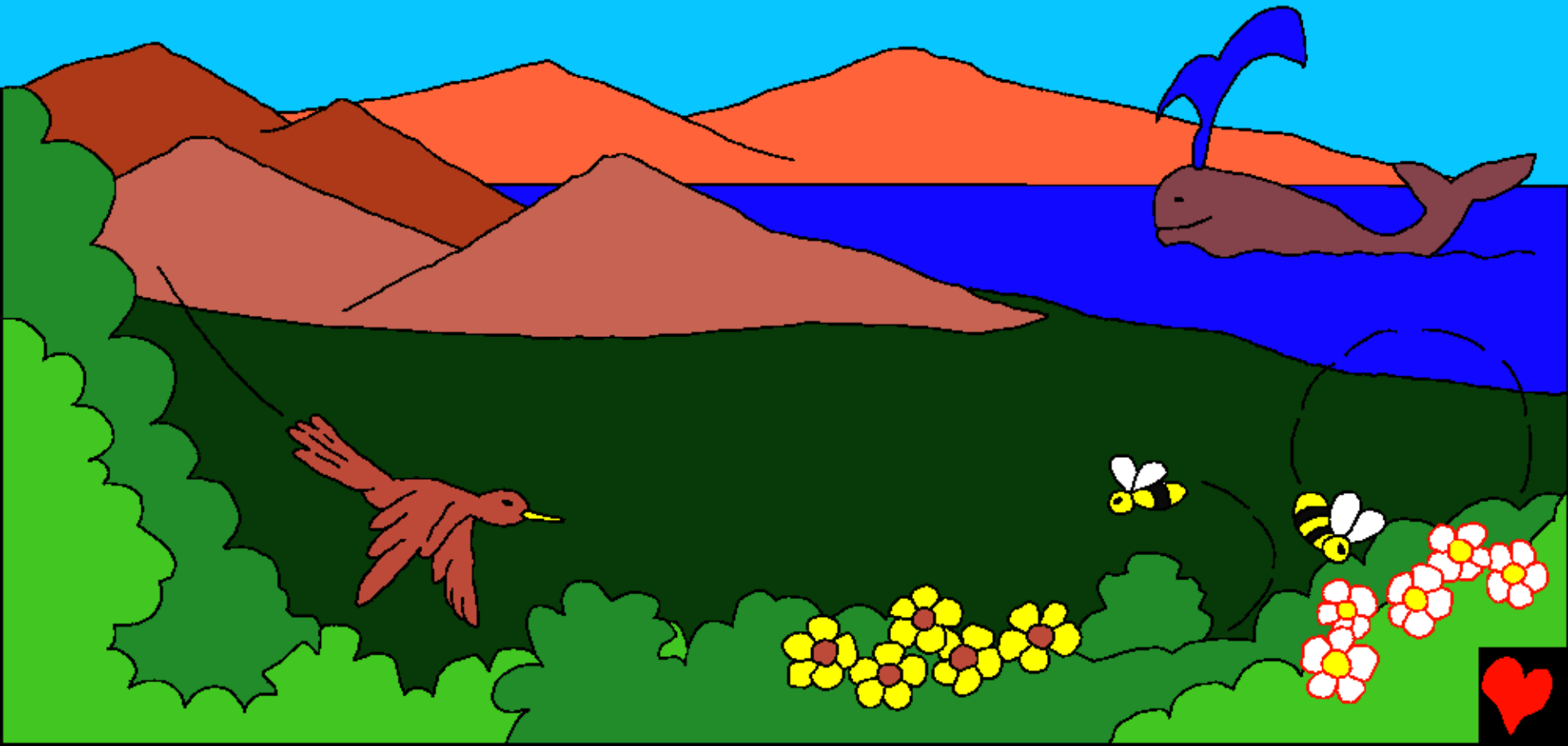


... muerio jumuthongi muno
na miiti imiraja, nyoni ciari na mbuui
cienaenagia na njuki ikugamba, nyamu
iria nene buru ikaraga irieene

and ikonyo biria
bitenderaga.



Nibwama, Murungu oombire into
bionthe biria birio - bionthe.



Kiambiririeene, mbere
ya Murungu oomba
noo mbi, gutari na
gintu nonga
Murungu aki.
Gutaari na
antu kana
guuntu kana into.
Gutikio. Gutaari na
weeru na gutaari na muundu.



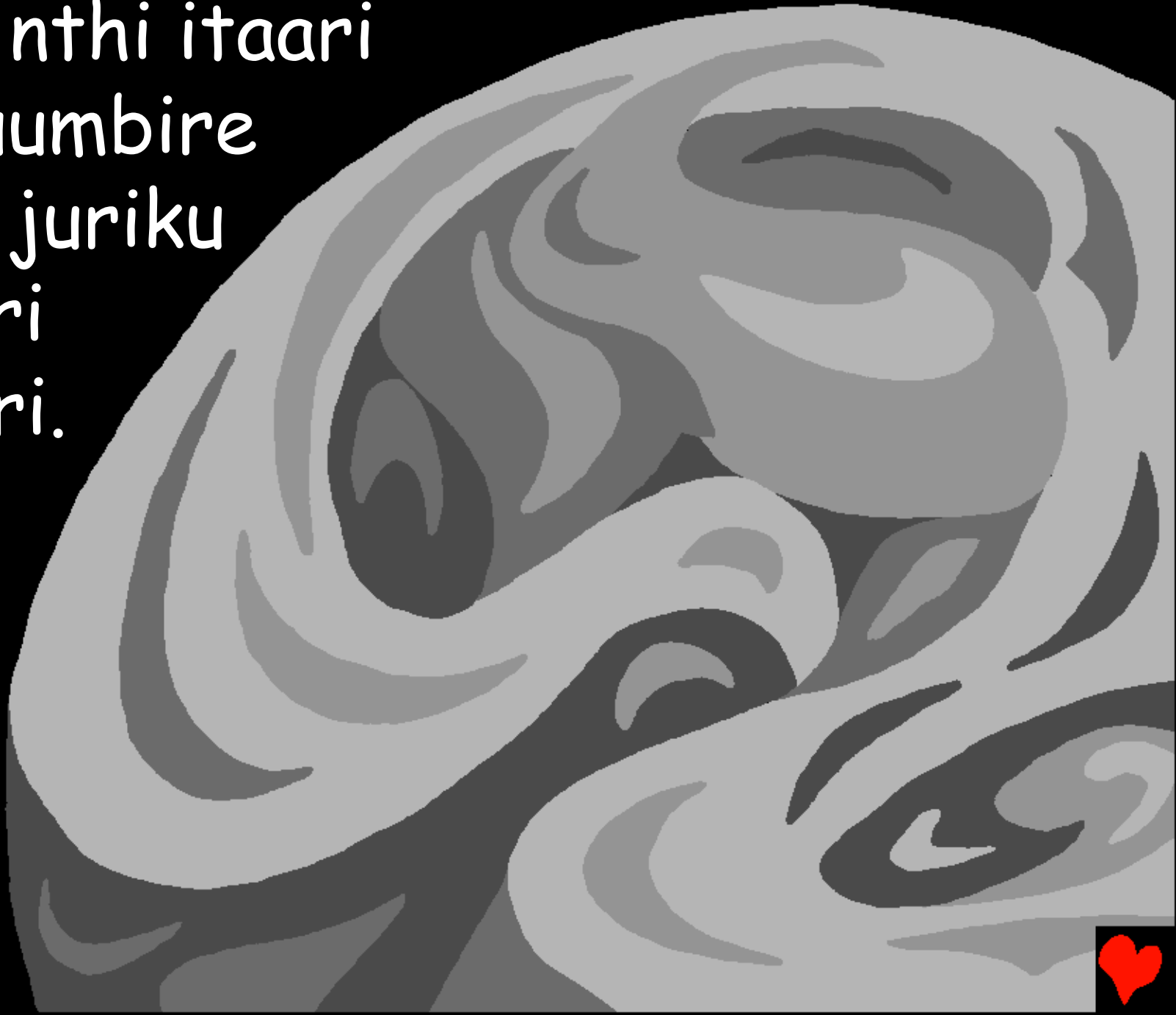
Gutaari na mwitio kana
mwiinamo. Gutaari na
igooro na gutaari na
ruuju. Kwaari
na Murungu
aki na ataari
na mwambiririo.
Murungu arajukia
itagarua!



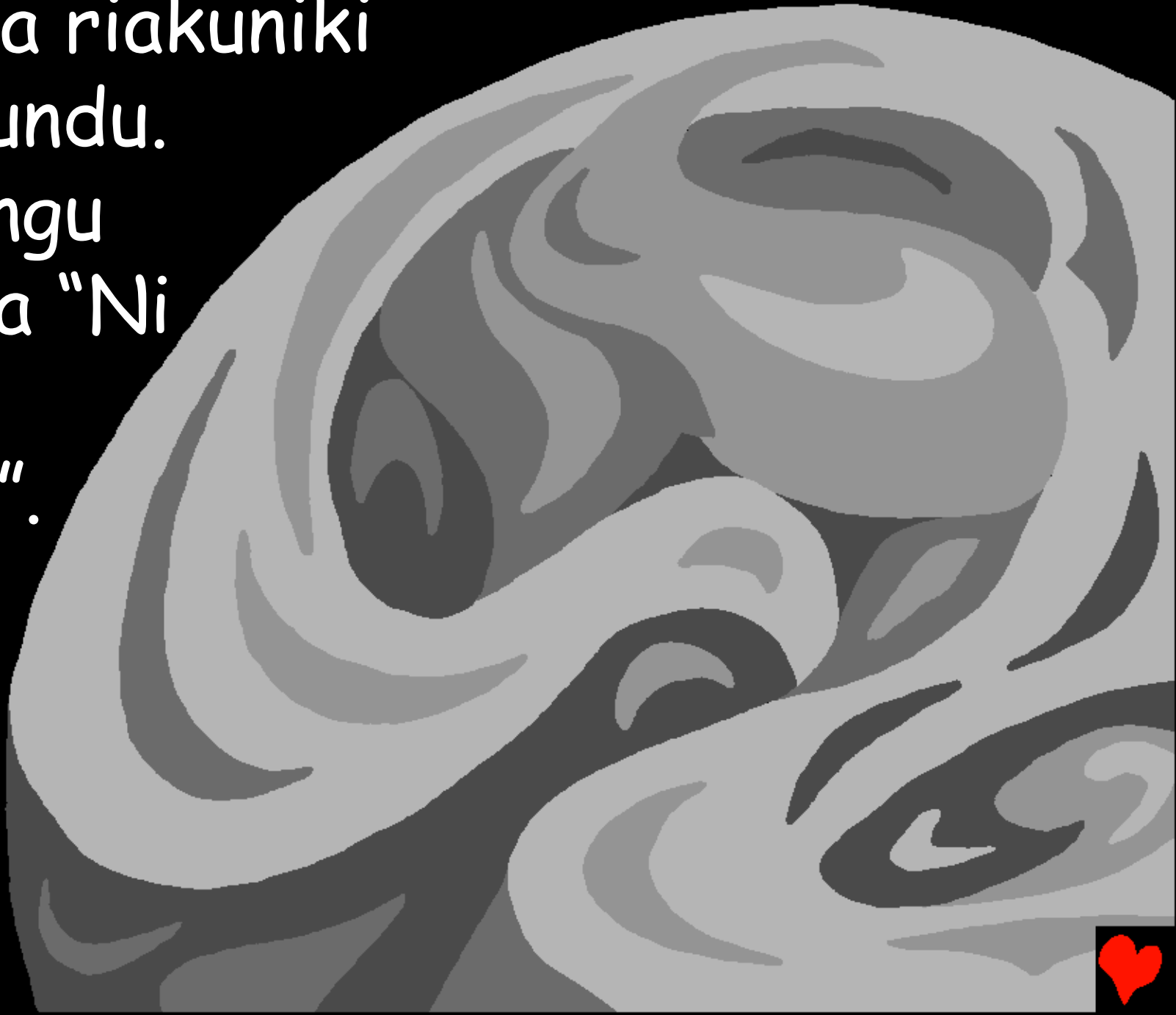
Kiambiririeene, Murungu ni
oombire iguru na nthi.



Nayo nthi itaari
na muumbire
kinya juriku
na yari
intheri.



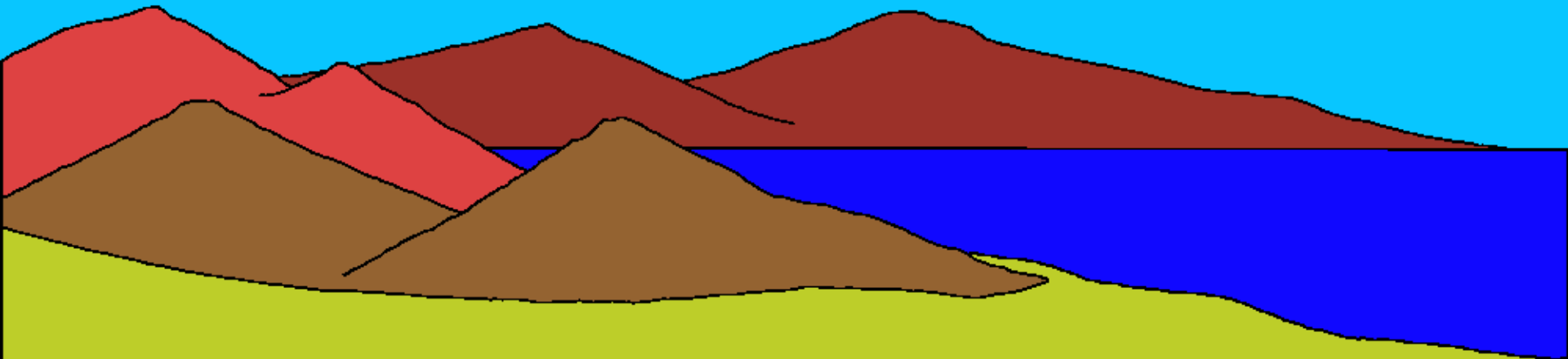
Na iria riakuniki
ni muundu.
Murungu
arauga "Ni
kugie
weeru".



Naku kuragia weeru. Murungu areeta
weeru muthenya, na muundu arajwita
utuku. Naku nigwaatukire na kurakea,
na iiu iraa ntuku ya mbere.



Ntuku ya ijiiri, Murungu arareta
ruuji rwathurana ruuria rwaari iguru
mono na ruria rwari ruungu. Ntuku
ya ithatu, Murungu arauga,



"Nthi injumo yumire"
na kurakara ou.



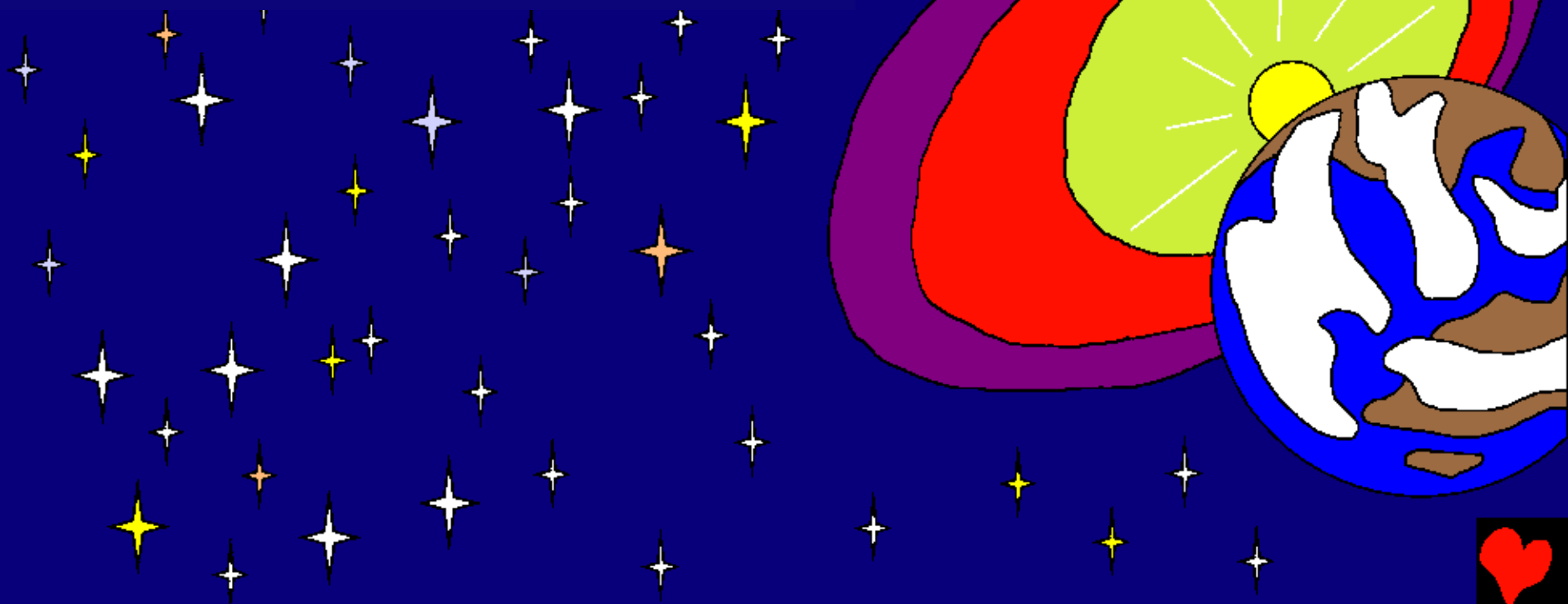
Murungu arauga nyaaki na maua na
imera bionthe na miiti
biume. Na bionthe
birauma. Naku
nigwatukire na

kurakea, iiu iraa

ntuku ya ithatu.



Murungu arauga, nikugie riiua, na
mweri, nan jota inyingi iria
itiumba gutarika. Naku
nigwatukire, na kurakea,
iiu iraa ntuku ya inya.



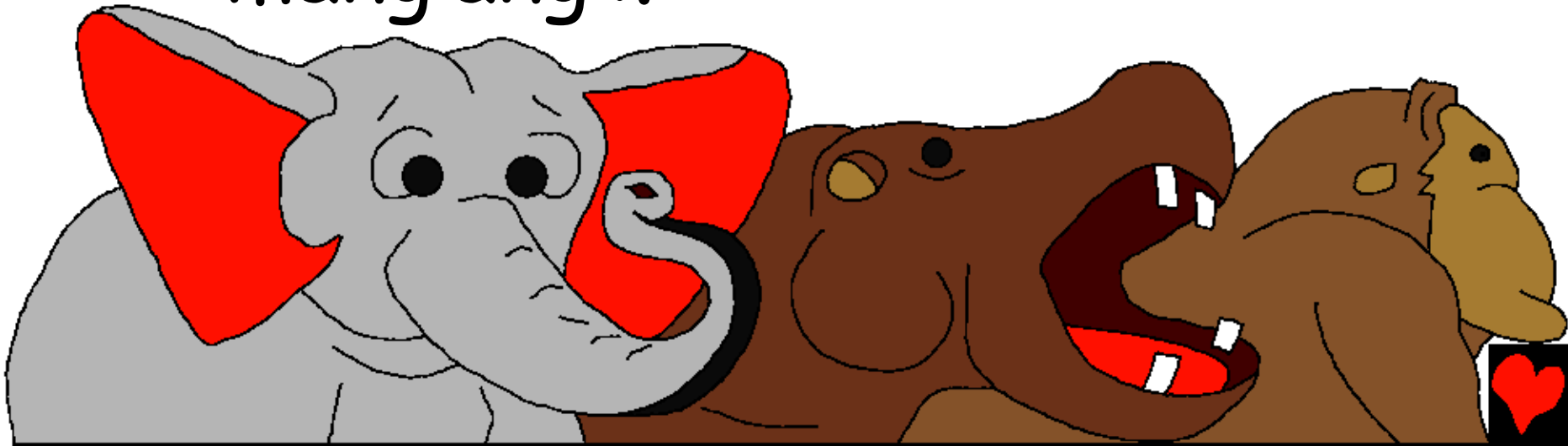
Biumbe biri mwoyo
bia mithemba
yonthe biria biitaitaga
ruujine na makuyu
na nyoni cia
mithemba yonthe
nibio biombirue
bithingatite kiri
mutaratara jwa
murungu.



Murungu aroomba
ikuyu bia mithemba
yonthe biujurie nduuji
cia nthiguru na nyoni
cia mithemba yonthe
bigwirirue tiiri na
nduuji na maatu.
Naku nigwatukire,
na kurakea, iiu iraa
ntuku ya itano.

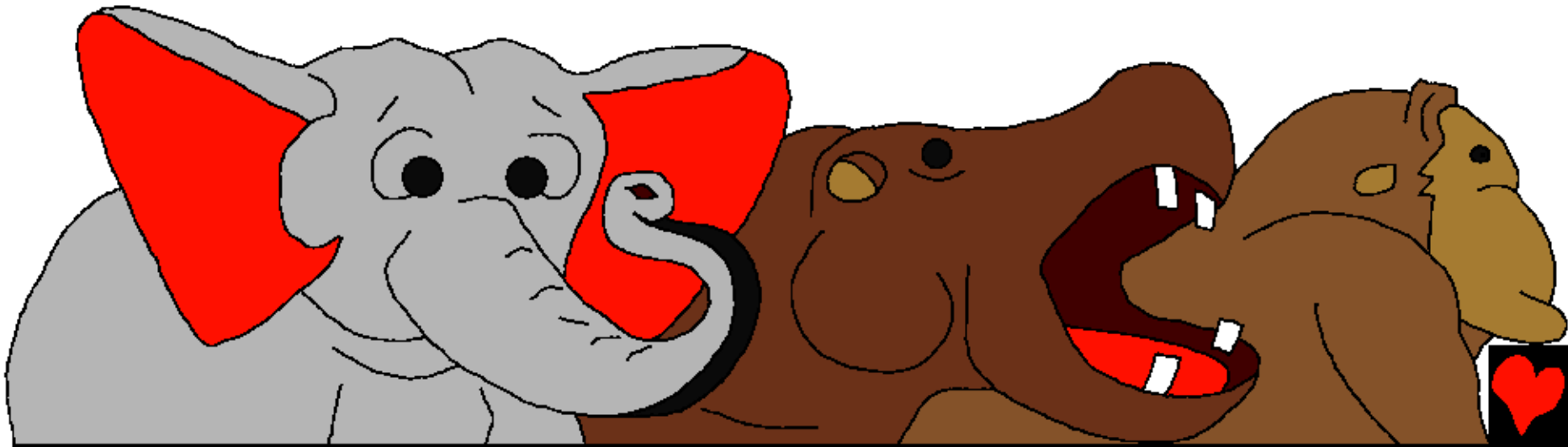


Nyuma ya buu, Murungu araria kairi.
Arauga "Nthi nigite biumbe biri na
muoyo bia mithemba yonthhe ..."
Kuragia nyomoo cia mithemba yonthhe.
Kuragia na njogu inene buru nan yoni
cia mithemba yonthhe. Maruki na
mang'ang'i.



Mithoro na minugu. Nyomoo cia
mithemba yontha niciombirwe ni
Murungu ntuku iiu.

Naku nigwatukire na kurakea, iiu
iraa ntuku ya ithanthatu.



Murungu nathithirie untu bungu ntuku
ya ithanthatu - untu bwa mwanya
muno. Giintu kiionthe nikiari kia muntu.

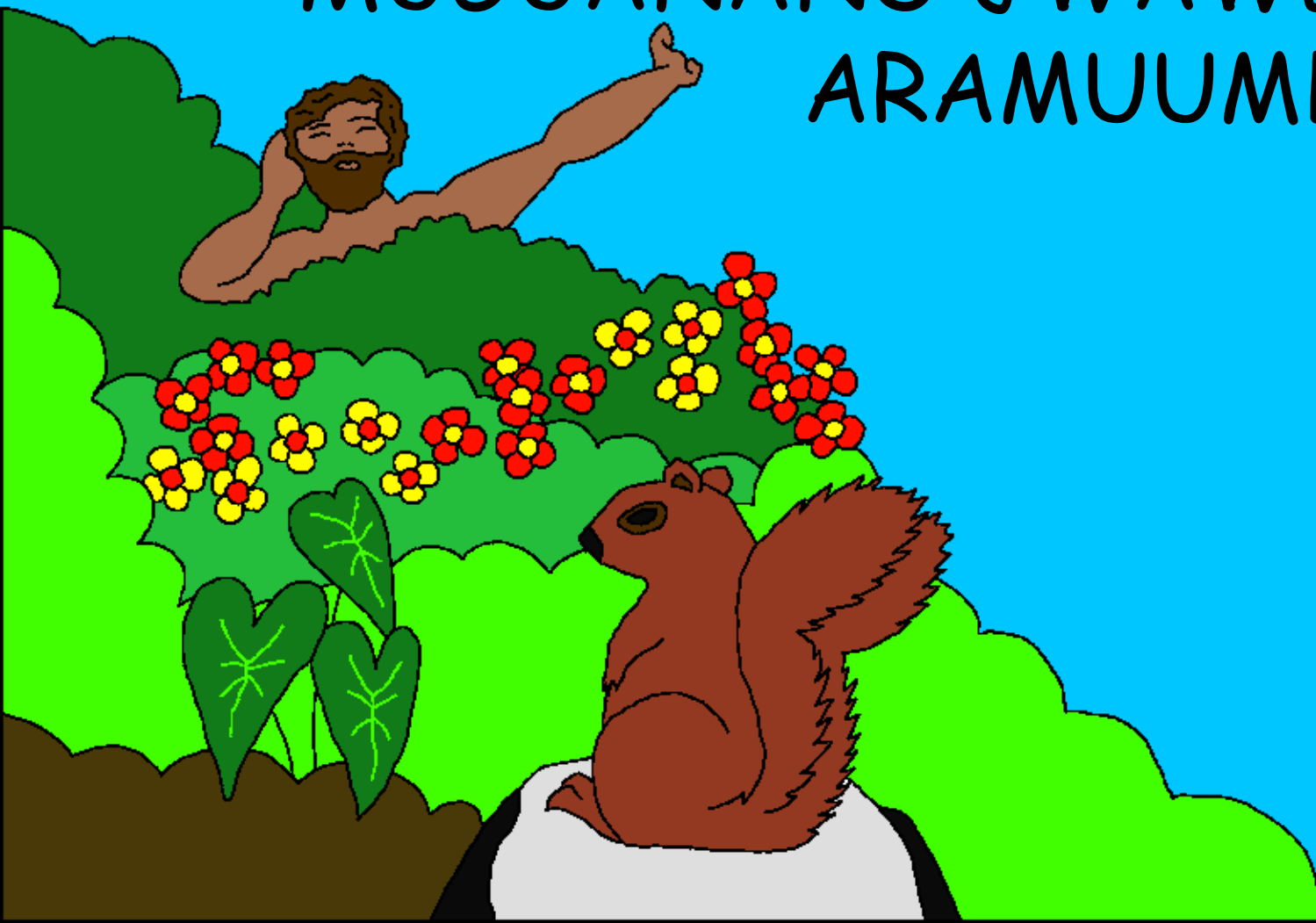
Ni kwari na irio bia
kugana na nyomoo
cia kumutetheria.



Na Murungu arauga "Tiga tuumbe
muntu uguaneene na bautui. Muntu
uju akaathaga
gintu kionthe kiri
mwoyo gitaitaga
nthiguru" ...



... KWA UU MURUNGU AROMBA
MUNTU UGUANENE NAWA;
MUGUANANO JWAWA
ARAMUUMBA ...



Murungu
areera
Adamu,
"Niwitikiiritue
kuriijaga
matunda ja miti
yontha iria iri
mundane juju.



Indi matunda
ja muti jwa
kumenyithania
wega na uui,
menya ujaria
niuntu ntuku
iria ukajaria
nima ugakua".



Na mwathani Murungu arauga "Ti
bubwega muntu kwithirwa ari wenka.

Nkaamuthithiria muteethia
uria ukaaganira nawe"
Tuntu buu Murungu
arareeta nyamu



cionthe nan
yoni cionthe
kiri Adamu.



Adamu araciita mariitwa cionthe.

Ni aari muntu umuume muno wa

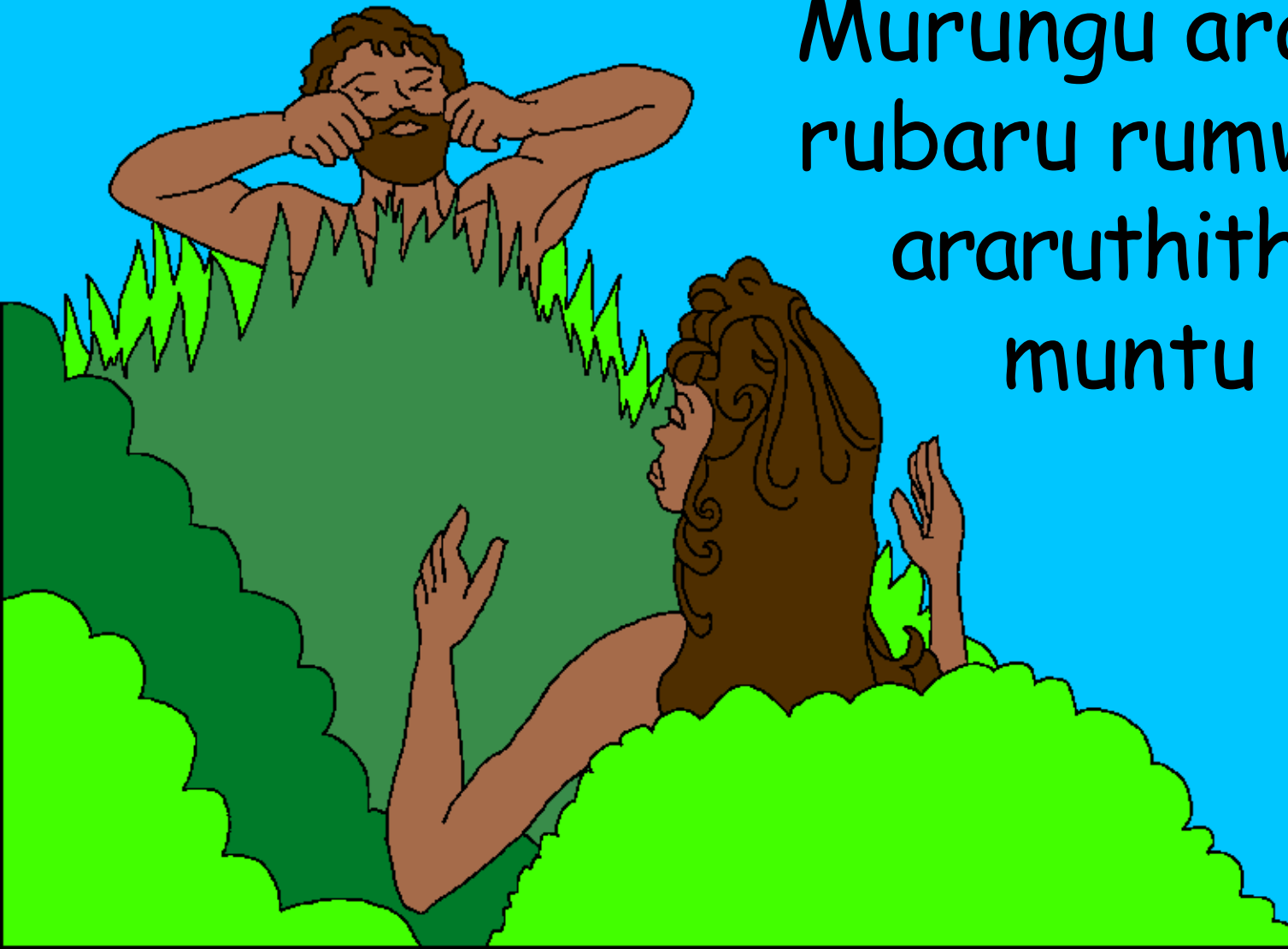
kuriita Ngugi iiji. Iindi
kiri nyomoo cionthe cia
kithaka nan yoni cionthe
atoona mutethia

uguaneene
nawe.



Mwathani Murungu aratuma Adamu
aagwatwa ni toro inene. Mwathani

Murungu aramuriita
rubaru rumwe na
araruthithia ruraa
muntu muka.



Muka uju uria Murungu athondekire
aari nikenda awe mutethia wa Adamu.



Murungu oombire into bionthe
na ntuku ithanthatu. Murungu
aratharima ntuku ya mugwanja
na aramiathura nikwithirwa
niyo aanogokire kuuma kiri
ngugi iria aritaga.



Muundeene jwa Edeni,...



... Adamu na Hawa mwekuru
wawe nibagwiragua mono gukara
ku bakiathikagira Murungu.
Murungu aari mwathani wao,
wabaejaga into bionthe na
aari mucore wao.



Riria Ngai ombire into bionthe

Karugono kuuma kiri kiugo kia Murungu,
iuku ria Ngai

koneekete kuuma

Kiambiriria 1-2

"Witikio bwa kiugo kiawe nikio utheeri."
Zaburi 119:130



Mwisho



Iuku riiri ria Murungu riiritwiira
maantu ja Murungu wa kurigaraaria muuno
uuria watumbiire na uuria weendaga umumeenya.

Murungu niaiji nituthiithitie maantu jamathuku
muno, jaaria etaaga meeyia. Nthiinjire ya
meeyia ni gikuo, indi mwathani akuendete muno
niuntu niatumire muutana waawe wa muumwe
jesu, araambwa mutharabeene na araewa
nthiinje niuntu bwa meeyia jaaku. Jesu
niaariukire na areeta njeewe iguuru! Weetikania
na nteeto cia Murungu na wairiira meeyia jaaku,
akaathithia uu! Akeeja atuure ndeene yaaku
kairi, na ugaatuura nawe kenya na kenya.



Kethira nugwitikia iji ni
nteto ciama, iira Murungu mantu jaja:
Kiri Jesu, nimbitikitie ugwe uri mwathani,
na waaere muntu nikenda uukua nontu
bwa meeyia jakwa, na nandi uuri mwoyo.
Ndaromba wiije ndeene ya mwooyo jakwa na
undekeere meeyia jakwa nikenda nkaagia na
utuuro bubweru na ntuku imwe nkeeja ntuure
nagwe kenya na kenya. Nteetheria
nkuathikire na nguturiireta mwana
waku. Ameni.

Thooma Iuku ria Murungu na waarie na
Mwathani ntuku cionthe! Johana 3:16

