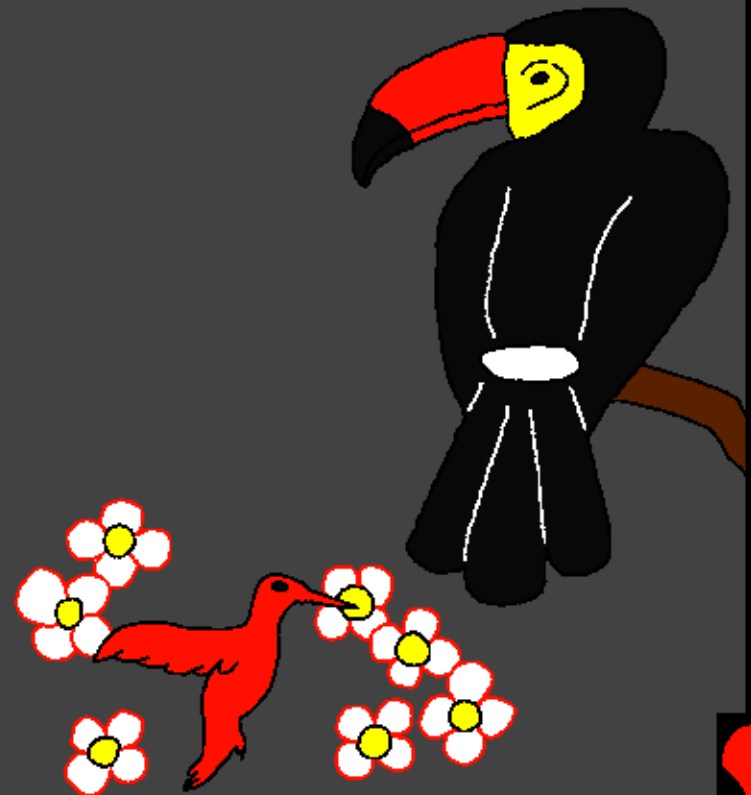
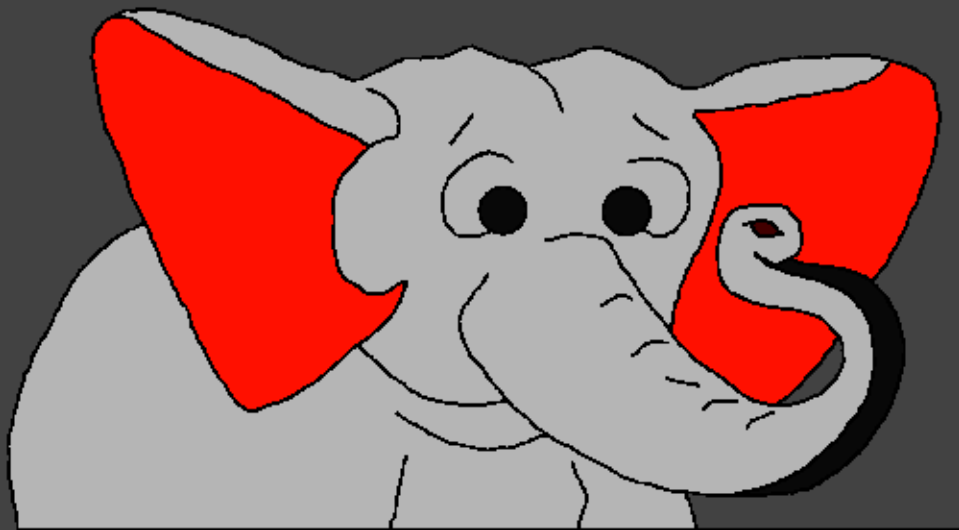


Naupang te tana Pathian Lehkhabu Thianghlim  
I hnenrawn thlentu

Pathian in engkim  
a siam laiin



Ziaktu: Edward Hughes

Milem nena sawifiahtu: Byron Unger; Lazarus;  
Alastair Paterson

A hmeh leh remchang zawnga lettu:  
Bob Davies; Tammy S.

Letlingtu: C. Lyani

Chhuahtu: Bible for Children  
[www.M1914.org](http://www.M1914.org)

©2020 Bible for Children, Inc.

Phalna: He thawnthu hi sumdawn na atan a hman  
anah loh phot chuan I duh ang in ziah chhawn  
emaw khawla chhut chhawn phal ani.



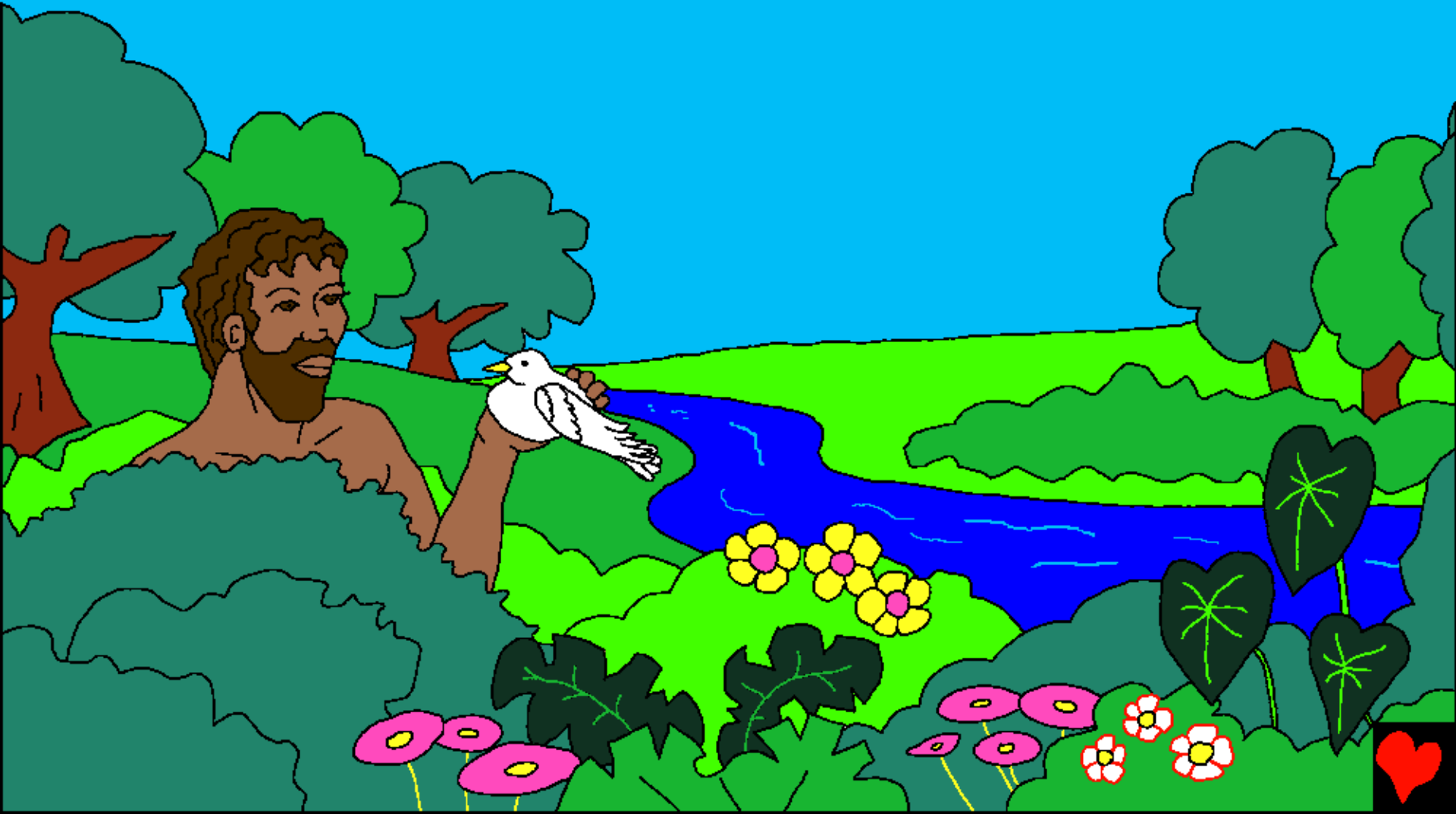
Tunge min siamtu? Pathian Lehkhabu,  
Pathian thu chuan mihring te lo intan dan  
min hrilh. Hmasang ah khan, Pathian in  
mihring hmasa ber siamin a hming  
ah Adama a sa a.



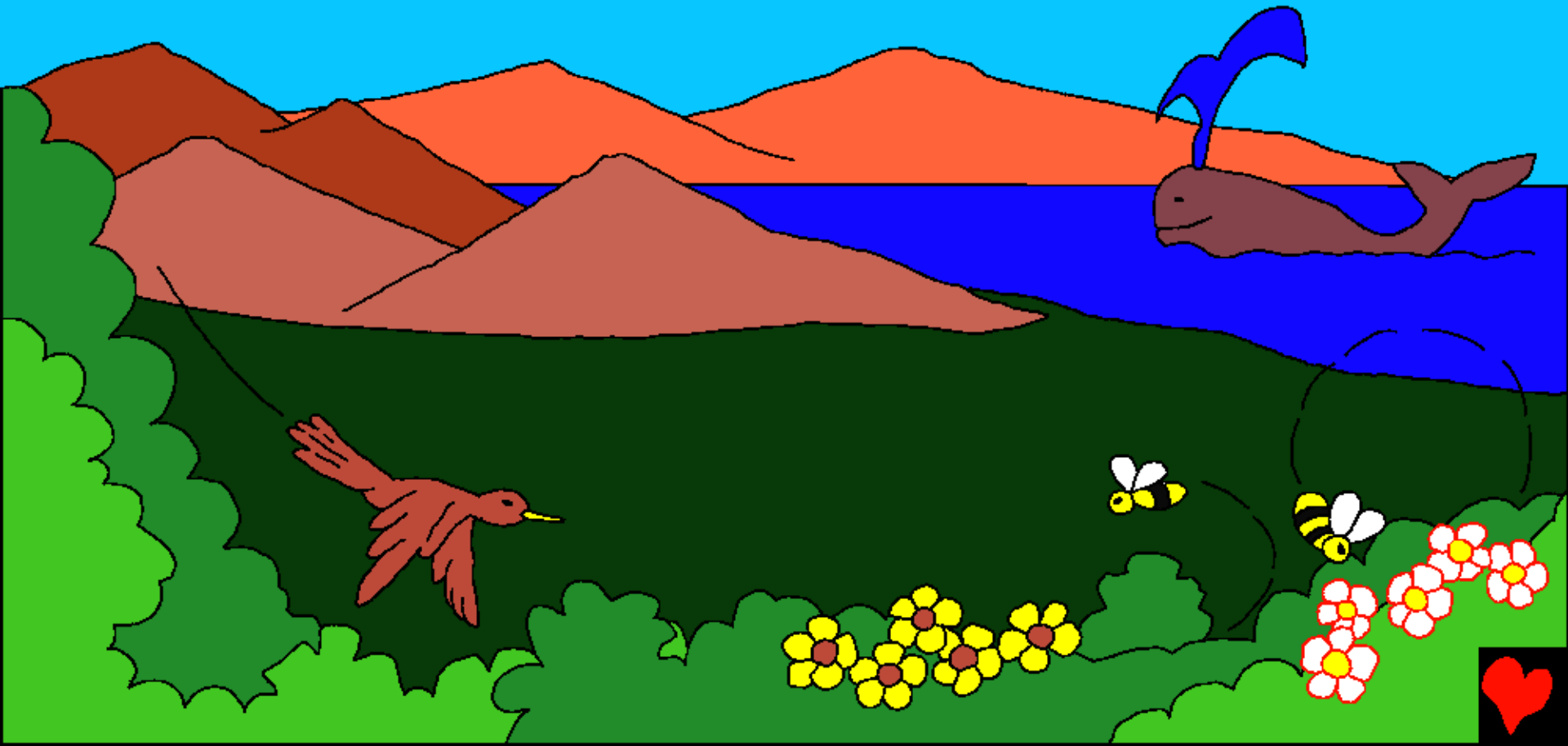
Pathian in Adama chu vaivut atangin  
a siam a. Chutah Pathian chuan  
Adama chu a thaw a thawk  
khuma, ani chu  
minung alo  
nita ani.



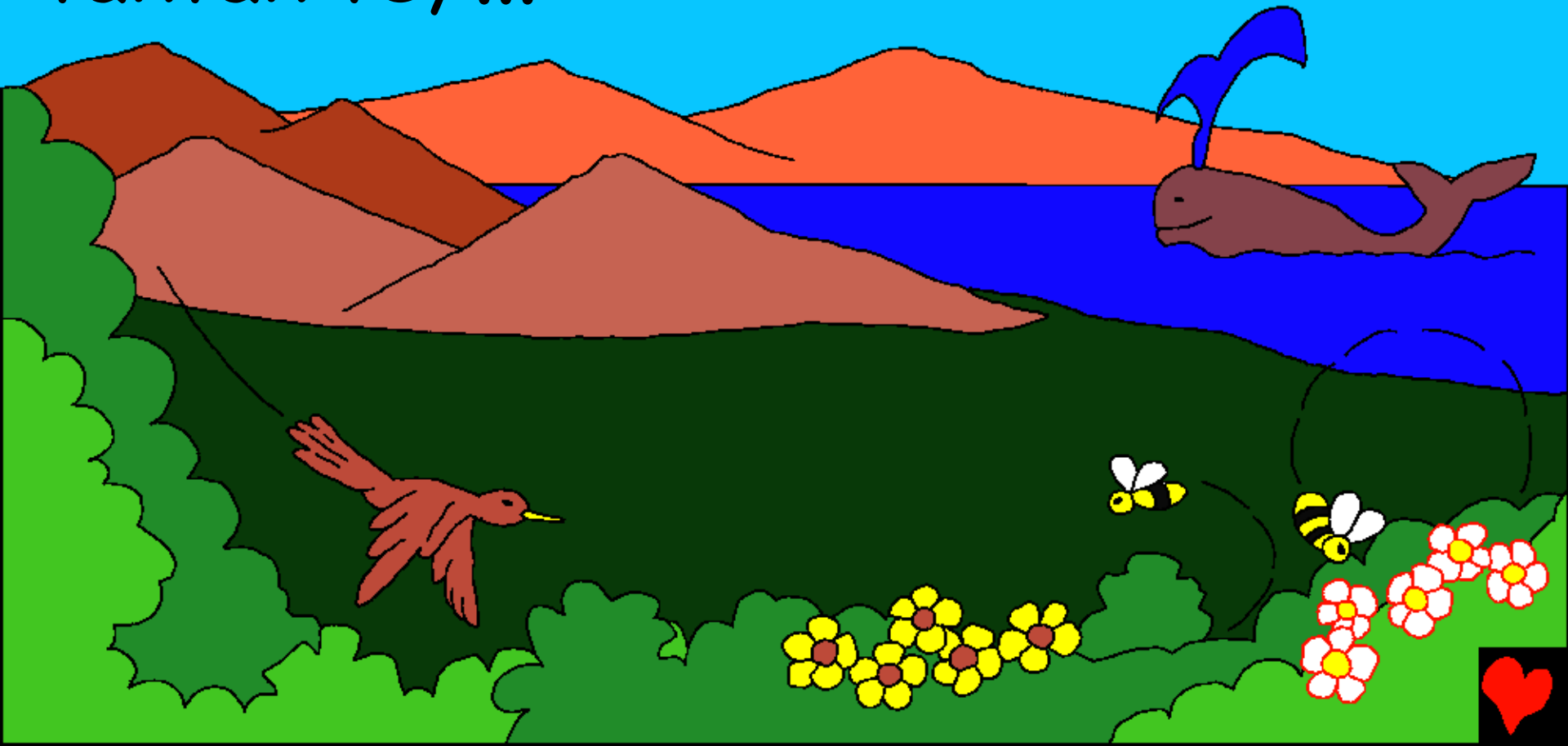
Huan mawitak Eden in tihna hmun ah  
hian Adama chu a lo cheng ta ani.



Pathian in Adama a siam hma in  
khovel mawi tak mai thil mak  
tamtak a khat chu a siam a.



A indawt te te in Pathian chuan  
tlangram te, phul rai te, pangpar  
rimtui taktak leh thingkung sang  
taktak te, ...



... sava mawi taktak te leh khuai te,  
nghapui (sangha taktak ni lo) te leh  
piring te a siam ani. A nihna takah  
chuan engkim mai hi Pathian

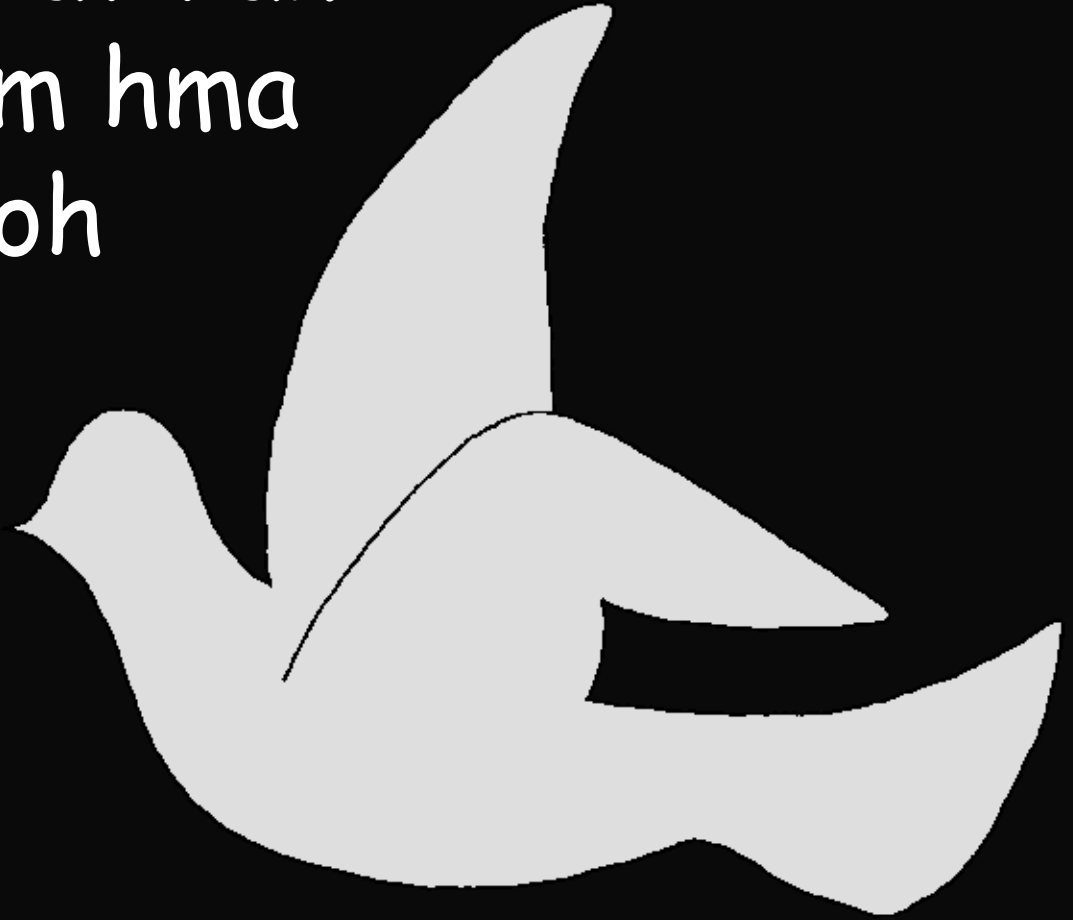


siam vek  
ani.





A tirah chuan, Pathian  
in engmah a siam hma  
in, Pathian tih loh  
chu engmah  
dang a om lo,  
mihring emaw,  
hmun emaw thil  
emaw takngial  
pawh a awm lo ani.



Chhuk leh chho a awm  
lo a, nimin leh naktuk  
pawh a awm hek lo.

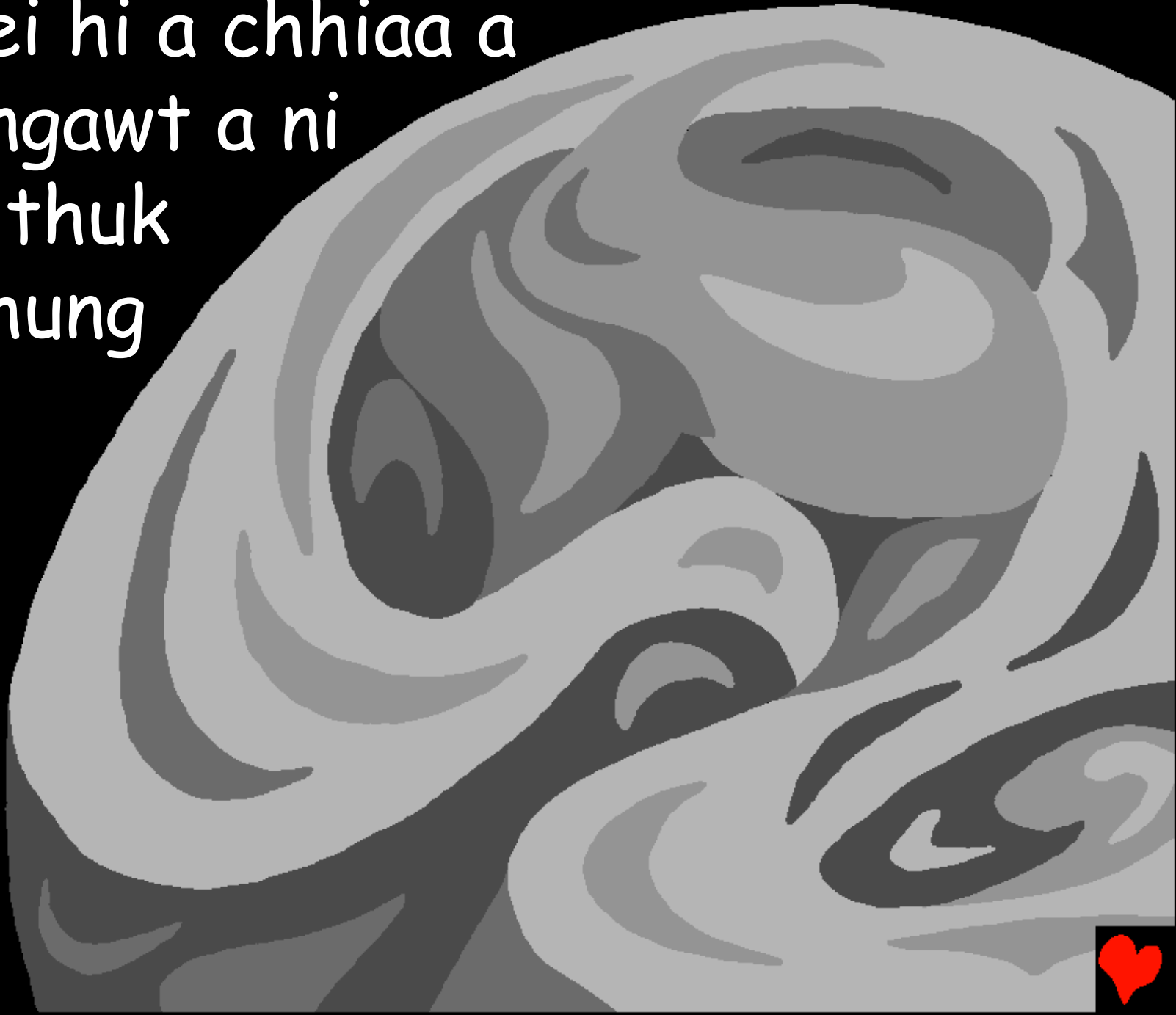
Chu tih lai chuan  
Pathian chauh  
a intanna pawh  
awm lo in a awm  
ani. Chutichuan  
Pathian chu a  
che tan ta a.



A tirin Pathianin lei leh  
van a siam a.



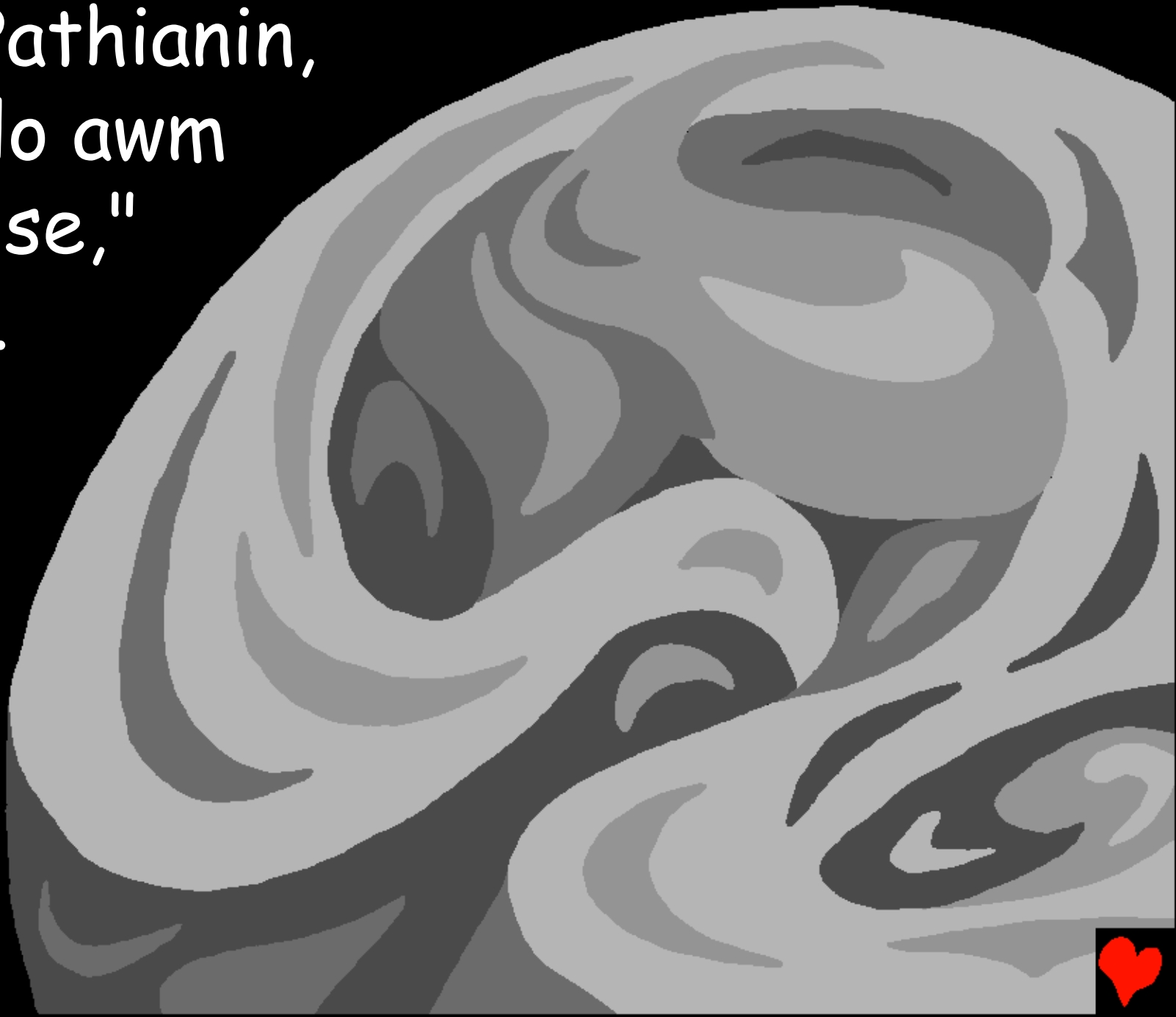
Tin, lei hi a chhiaa a  
ruak ngawt a ni  
a; tui thuk  
tak chung  
chu a  
thim  
mup  
a.



Pathian Thlarau  
chuan tui  
chungte  
chu a  
awp  
reng  
a.



Tin, Pathianin,  
"eng lo awm  
rawh se,"  
a ti a.



Tichuan eng a lo awm ta mai a. Tin,  
Pathianin eng chu "Chhun" a vuah a,  
thim chu "Zan" a vuah a.



Tichuan tlai lam a awm a, zing lam a  
awm bawk a, a ni khatna chu.

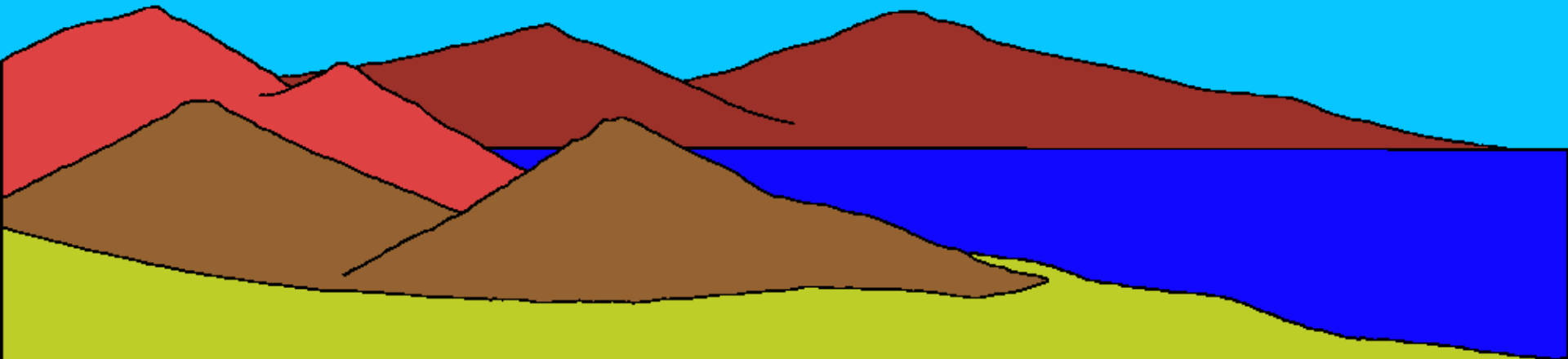




Tin, Pathianin, "Tui leh tui karah  
chuan boruak zau tak awm sela, chu  
chuan tui leh tuite chu then rawh  
se," a ti a.



Tichuan Pathianin, boruak zau tak  
chu a siam a, boruak zau tak hnuaia  
tui awmte leh boruak zau tak chung  
tui awmte chu a then ta a:



chutiang chu a lo ni ta a.



Tin, Pathianin, "Leiin hnim te, thlai  
chi nei te, thei kung,  
leia anmahni chi  
awm dan tur

anga rah, ...



... a rah chhunga a chi awmte chu  
chhuah rawh se," a ti a:  
tichuan chutiang  
chu a lo ni ta a.



Tichuan tlai lam a awm a, zing lam  
a awm bawk a, a ni  
thumna chu.



Tin, Pathianin, ni  
thla leh arsi tamtak  
chhiar senloh te chu  
a siam a. Tichuan  
tlai lam a awm a,  
zing lam a awm bawk  
a, a ni lina chu.



Tin, Pathianin, "Tuite  
chuan thil siam che  
thei nunna neite tam  
tak chhuah teuh sela,  
savate pawh van  
boruak zau tak zawl  
duaiah, lei chungah  
chuan thlawk rawh se,"  
a ti a. Tichuan Pathianin  
tuifinriat thil nasa tak  
lian pui puite chu a siam ...



... a, thil nung che thei  
tinreng, tuiin a chhuah  
teuhte chu, anmahni  
chi awm dan tur ang  
theuhvin a siam bawk  
a, sava thla nei tinreng  
pawh anmahni chi awm  
dan tur ang theuhvin a  
siam bawk a: tin,  
Pathianin chu chu a  
en a, tha a ti hle a.

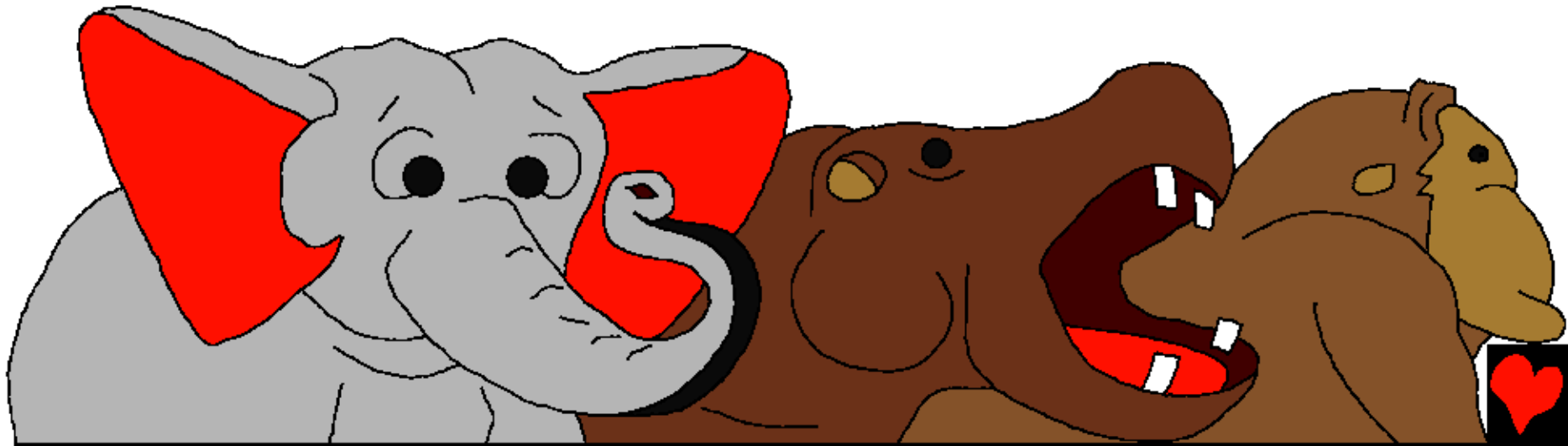




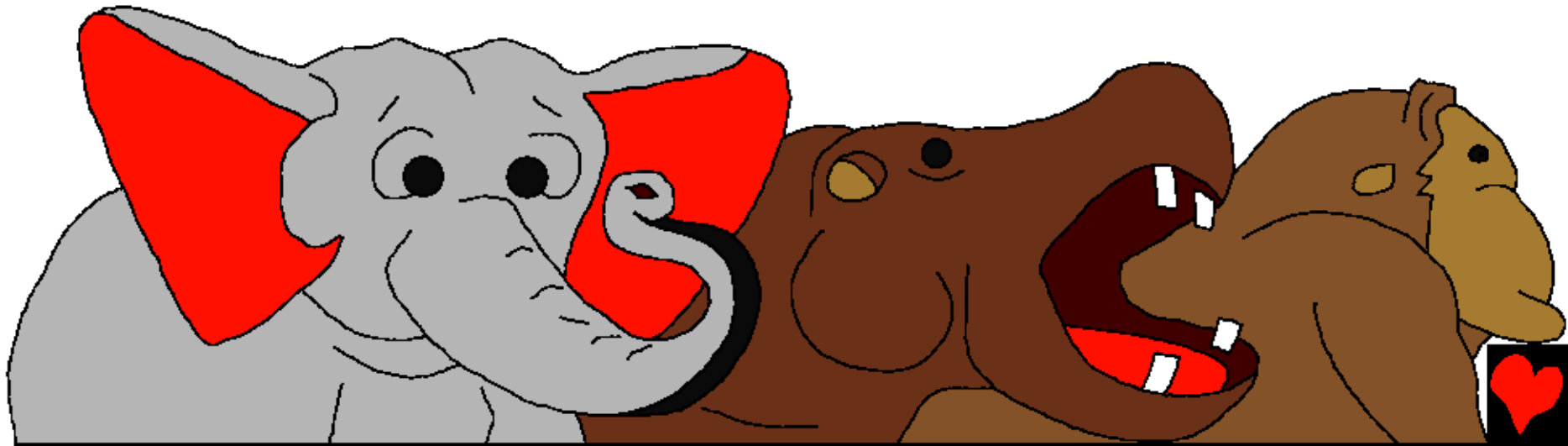
Tin, Pathianin, "Chi tam tak thlahin lo pung ula, tuifinriat tuite tikhat rawh u, savate pawh leiah pung rawh se," tiin, mal a sawm a. Tichuan tlai lam a awma, zing lam a awm bawk a, a ni ngana chu.



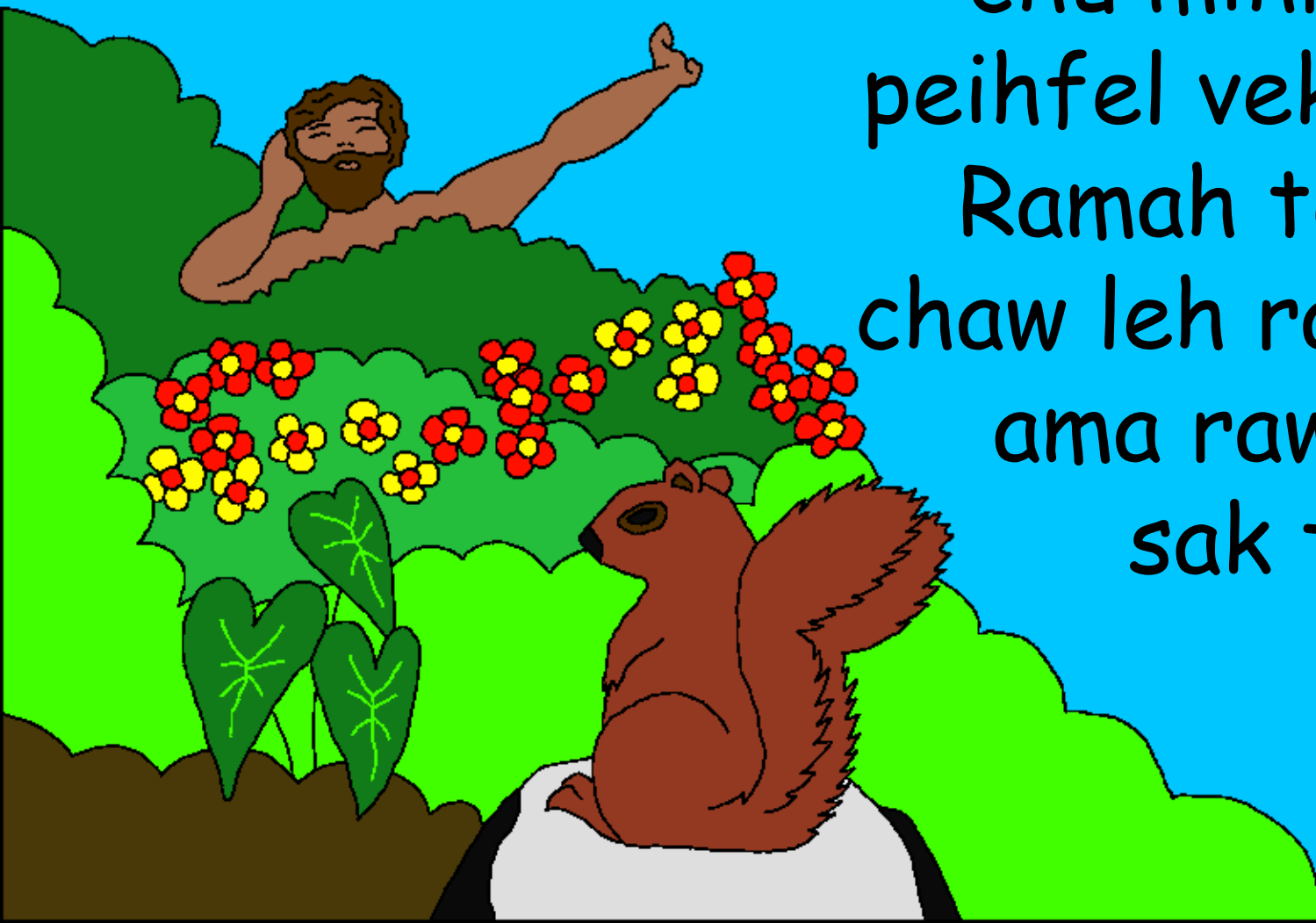
Tin, Pathianin, "Lei chuan thil  
Nung anmahni chi awm dan tur ang  
theuhvin, ran te, rannung te, ram sa  
te anmahni chi awm dan tur ang  
theuhvin chhuah rawh se," a ti a:  
tichuan chutiang chu a lo ni ta a.



Tichuan Pathianin ram sa anmahni chi  
awm dan tur ang theuhvin, rante  
anmahni chi awm dan tur ang theuhvin,  
leia thil bawkvaka kal zawng zawngte  
anmahni chi awm dan tur ang theuhvin a  
siam a. Tichuan tlai lam a awma, zing  
lam a awm bawk a, a ni rukna chu.



A ni ruk ni chuan Pathian in thil  
danglam bik pawh a siam a. Engkim  
chu mihring tan  
peihfel vek ani ta.  
Ramah te chuan  
chaw leh ramsa te  
ama rawngbawl  
sak turin an  
awm a.

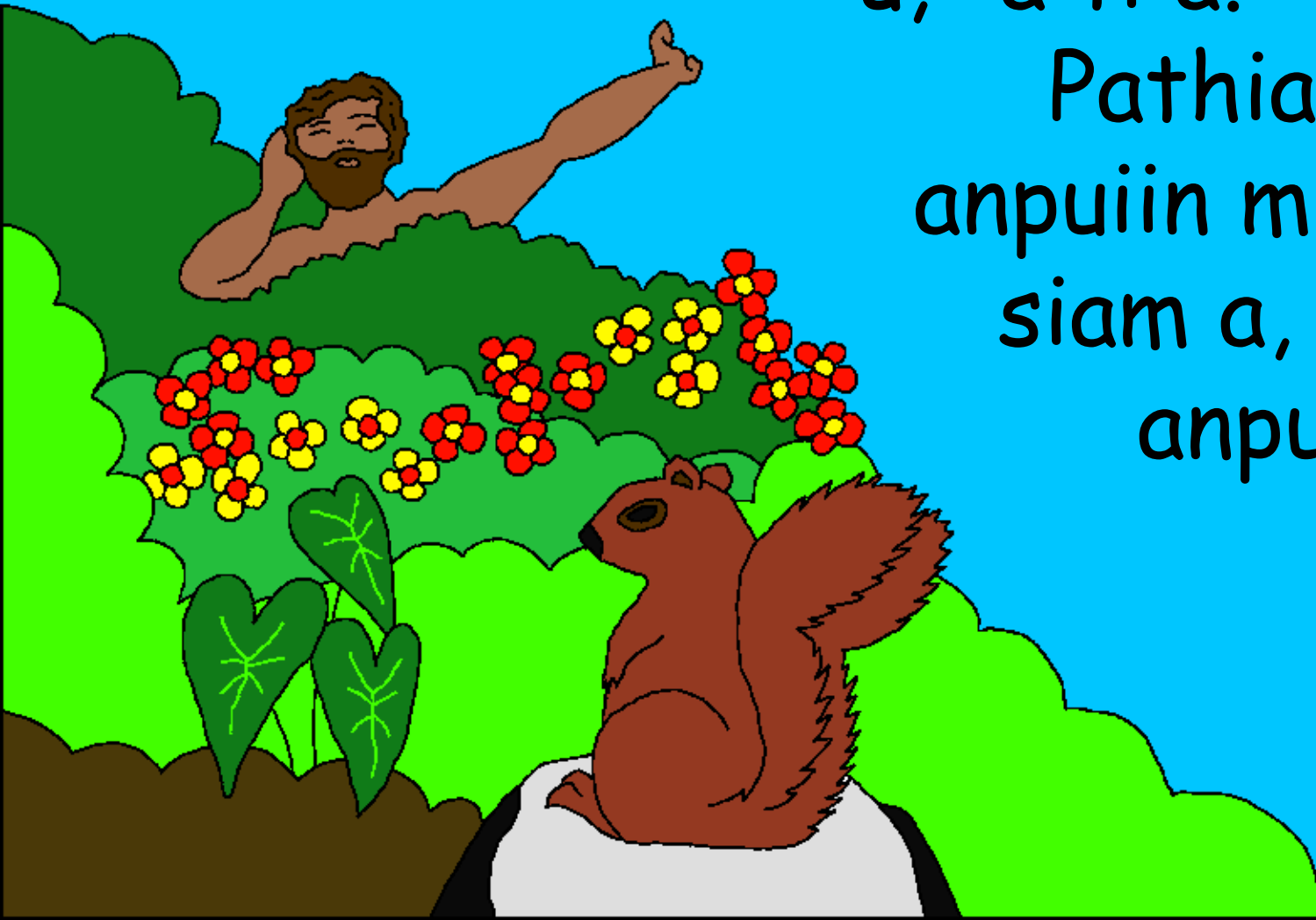


Tin, Pathianin, "Kan anpuiin,  
keimahni ang takin, mihring siam ila,  
anni chu tuifinriata sangha chungah  
te, chungleng sava  
chungah te, ran  
chungah te, lei  
chung zawng  
zawngah  
te, ...



... rannung leia bawkvaka kal zawn  
zawn chungah te thu i neihtir ang  
u," a ti a. Tichuan

Pathianin ama  
anpuin mihring a  
siam a, Pathian  
anpuin ngeiin  
a ni a  
siam ni.



Tin, LALPA  
Pathian  
chuan Adama  
hnênah chuan,  
"Huana thing  
tinrêng rahte  
hi I duh duhin  
I ei thei e; ...



... a chhia leh a  
tha hriatna  
thing rah  
erawh hi chu  
I ei tûr a ni lo:  
I ei chuan I ei  
nî la lain I thi  
ngei tûr a ni,"  
tiin thu a pe a.





Tin, LALPA Pathian chuan, "Mihring amah  
chauhva awm hi a tha lo ve: a mah  
tanpuitu tûr a kawppui âwm  
mi ka siamsak teh ang," a ti  
a. Tin, LALPA Pathian chuan,  
leiin ram sa tinrêng leh ...



... chunglêng sava tinrêng chu a siam a;  
tin, an hmingah engnge a vuah dawn tih  
hriat nan Adama hnênah a  
hruai hlawm a; tin, thil nung  
tinrêngte chu Adaman an  
hminga a lo vuah apiang ...



... chu an hming a lo ni hlen ta a. Tichuan  
Adama chuan ran zawng zawng te,  
chunglêng sava te, ram sa  
tinrêngte chu hming a  
vuahsak theuh va; nimahsela  
Adama tân chuan



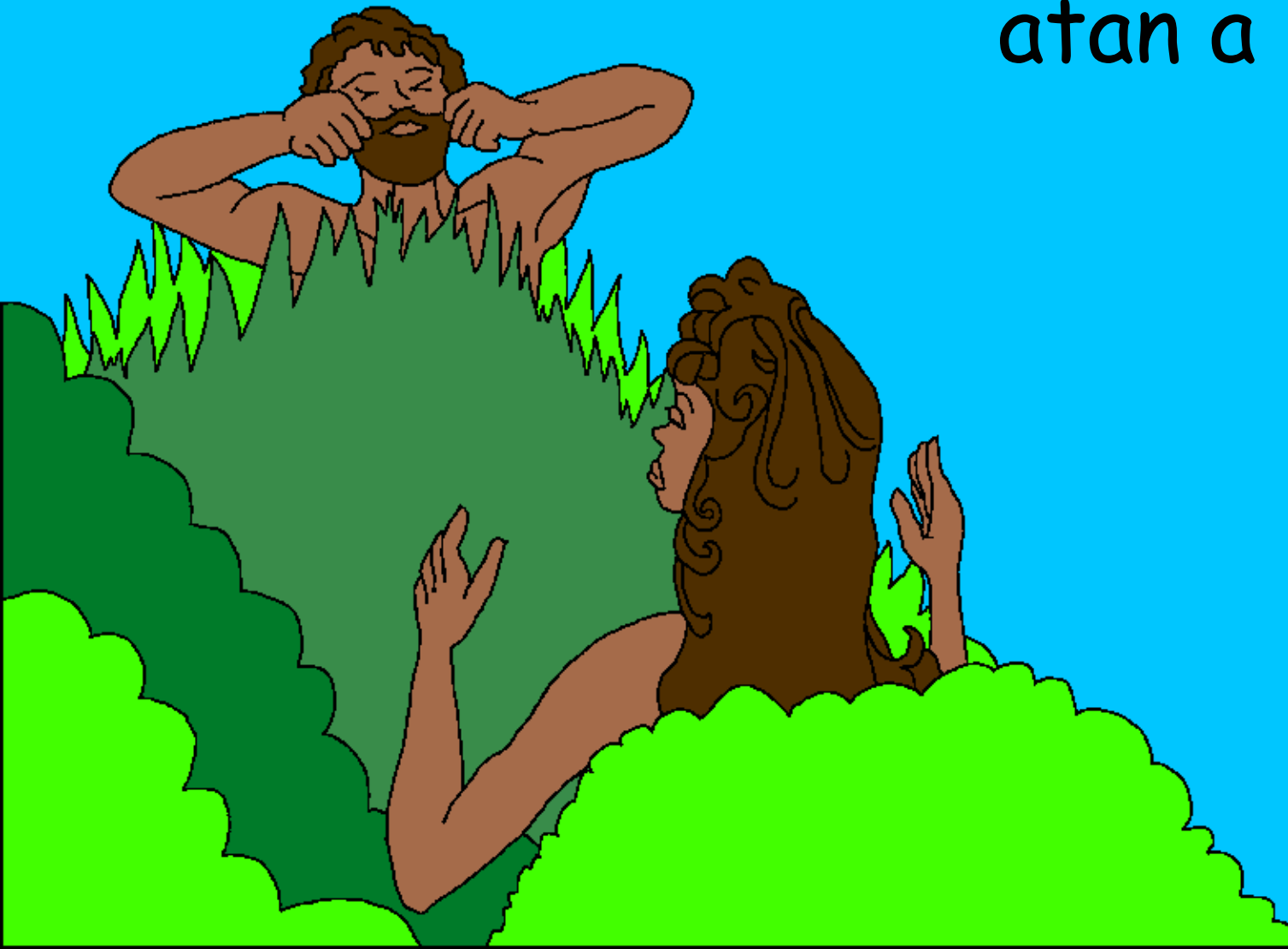
tanpuitu tân a  
kawppui âwm  
mi a awm lo va.



Tichuan LALPA Pathian chuan  
Adama chu tui takin a muthilhtîr a,  
tichuan a muhîl ta a;  
tin, a nâkruh pakhat  
a la a, chu mi chu  
hmeichhia ah  
a siam ta a.



Chu a hmeichhe siam  
chu Adama kawppui  
atan a pe ta a.



Pathian chuan engkim mai  
chu niruk chhung in a siam  
zo vek a. Tichuan Pathianin  
ni sarh ni chu mal a sawm  
a, a serh ta a:



Eden huanah chuan Adama leh  
Evi, Adama nupui chu hlimtak  
leh Pathian thuawih takin an  
khosa a. Pathian chu an  
LALPA, an innghahna  
leh an thian ani.



Pathian in engkim a siam laiin

Pathian lehkhabu atang a Pathian Thu  
nen a inmil thawnthu chu

hengah te hian a hmuh theih

Genesis 1 - 2

"I thu hrilhfiah hian mitte a tieng a;  
Mi mawlte chu a hriat thiamtir thin."

Sam 119:130





A tawp ta



He Bible thawnthu hian Pathian ropui zia  
leh Amah hrereng tura min duhzia min  
hriattir ani.

Pathianin thil thalo tam tak, Ani in sual  
atih chu kan ti tih a hria a. Sual man  
chu thihna ani, nimahsela Pathianin  
khawvel a hmangaih em em a, chutichuan  
a Fapa mal neih chhun a pe a, amah chu  
tupawh a ring apiang an boral loh va,  
chatuana nunna an neih zawk nan.



He thu hi a dik ani tih I rin chuan  
hetiang hian Pathian hnenah sawi rawh:  
Ka Lal Isua duhtak, Nangmah chu Pathian I ni  
tih ka ring a, ka soal avang a thi tur in mihring  
ah ilo piang a, tunah chuan I nung leh ta.  
Khawngaihtakin ka nunah lo awm la ka soal min  
ngaidam ang che. Chutichuan nun thar ka lo  
neih a chatuan a nangmah nen a kan awm dun  
theih nan. Khawngaihtakin Nangma thu awih  
a, I fa ni a, I tan a nung reng tur in min tichak  
ang che. Amen.

Pathian Lehkhabu Thianghlim chu nitin chhiar  
la Amah nen nitin hun hmangdun ang che u.  
Johana 3:16

