

Naupang te tana Pathian Lehkhabu Thianghlim
I hnenrawn thlentu

Pathian
Intiamkamna
Abraham
Hnenah



Ziaktu: Edward Hughes

Milem nena sawifiahtu: Byron Unger; Lazarus

A hmeh leh remchang zawnga lettu:
M. Maillot; Tammy S.


Letlingtu: George Kaizomlal M.Div

Chhuahtu: Bible for Children
www.M1914.org

©2017 Bible for Children, Inc.

Phalna: He thawnthu hi sumdawn na atan a hman anih loh phot chuan
I duh ang in ziah chhawn emaw khawla chhut chhawn phal ani.





Tui let atanga hun
tam tak a ral hnu in,
khawvel a chengten
ruahman na siam a.



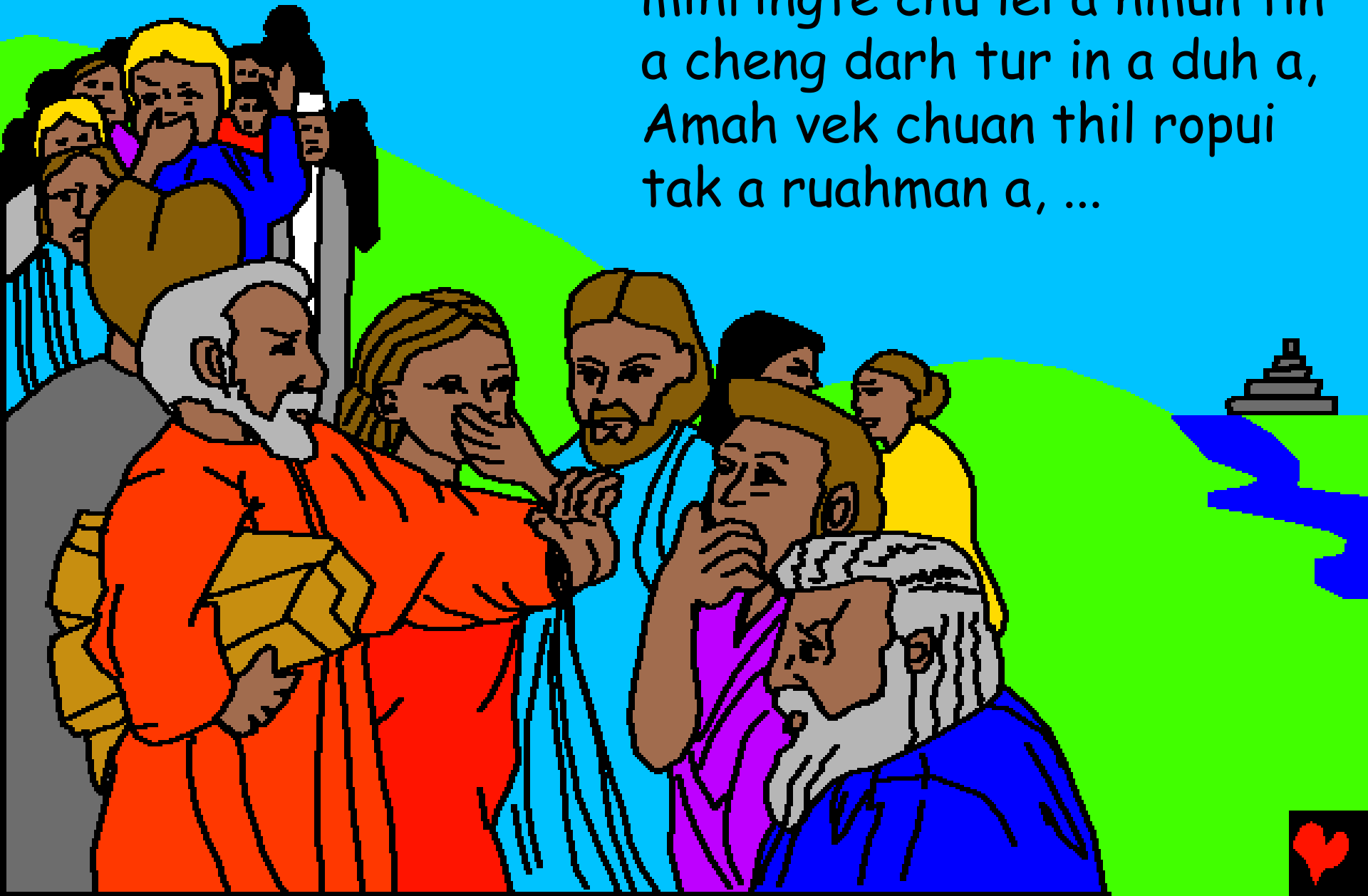
Hawh u, Khawpui i din
ang, in sang tak, van
tawng sa ila, an ti a,
Kan cheng ho reng
thei ang a, ...



... chutilo chu khawvel ah kan
awm darh zo dah ang e, ti in
thutlukna an siam a, khawvel
pum puiah chutih lai chuan
tawng khat an hmang a, an
awphawi pawh a
inang vek a.



Pathian chuan a siam
mihringte chu lei a hmun tin
a cheng darh tur in a duh a,
Amah vek chuan thil ropui
tak a ruahman a, ...



... chawplehchilh in tawng an in
hriat tawn theih lohnan an tawng
azuk tihran sak ta a, chuta tang
chuan pathian chuan tawng hrang
hrang siam in mihringte chu ram
tin ah ahnawt darh ta a.



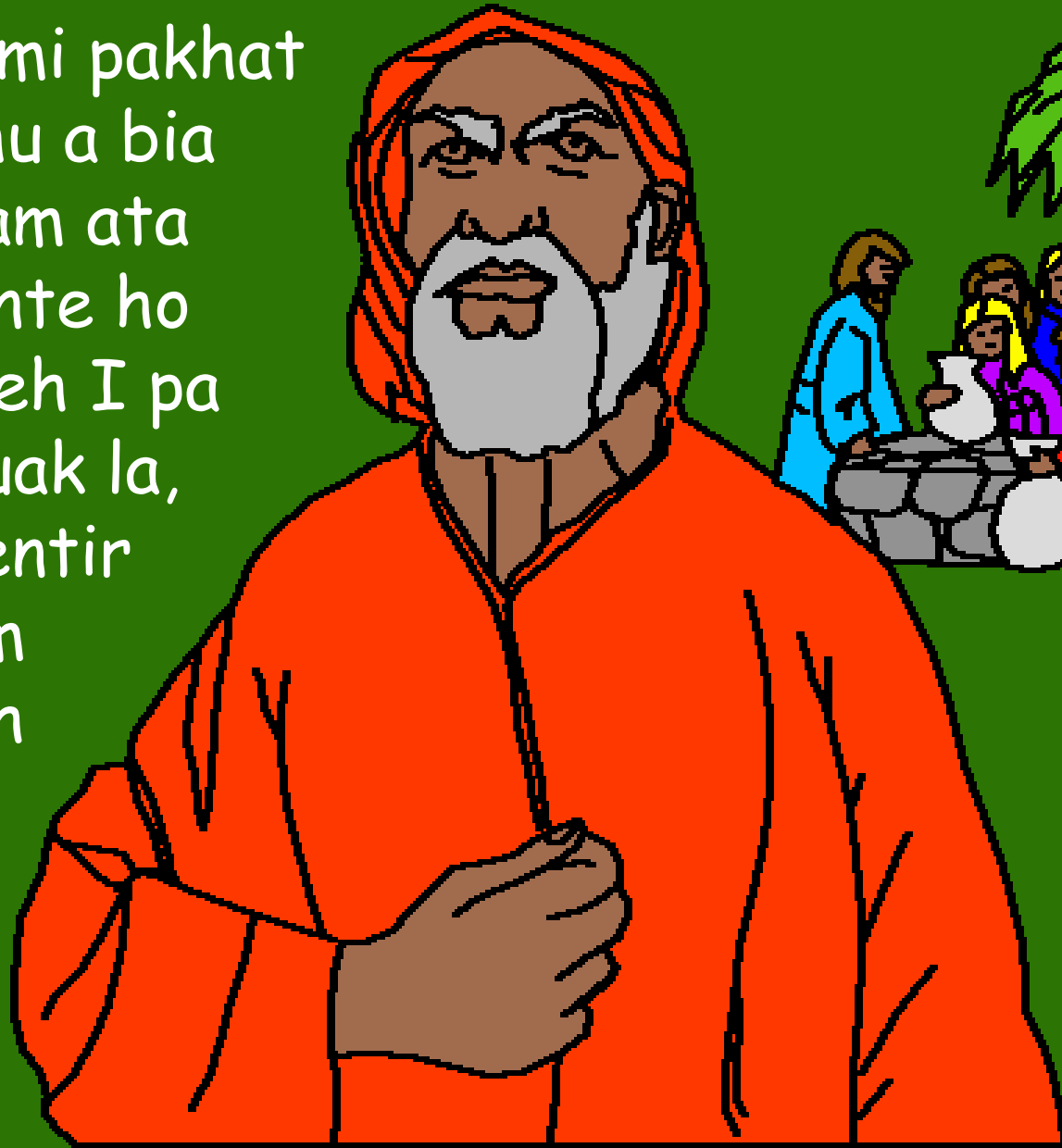
Khawvel a cheng mihringte tawng alo hran tak avang
in tawng intawnte chu hmun hran hran ah an darh ta
vek a.



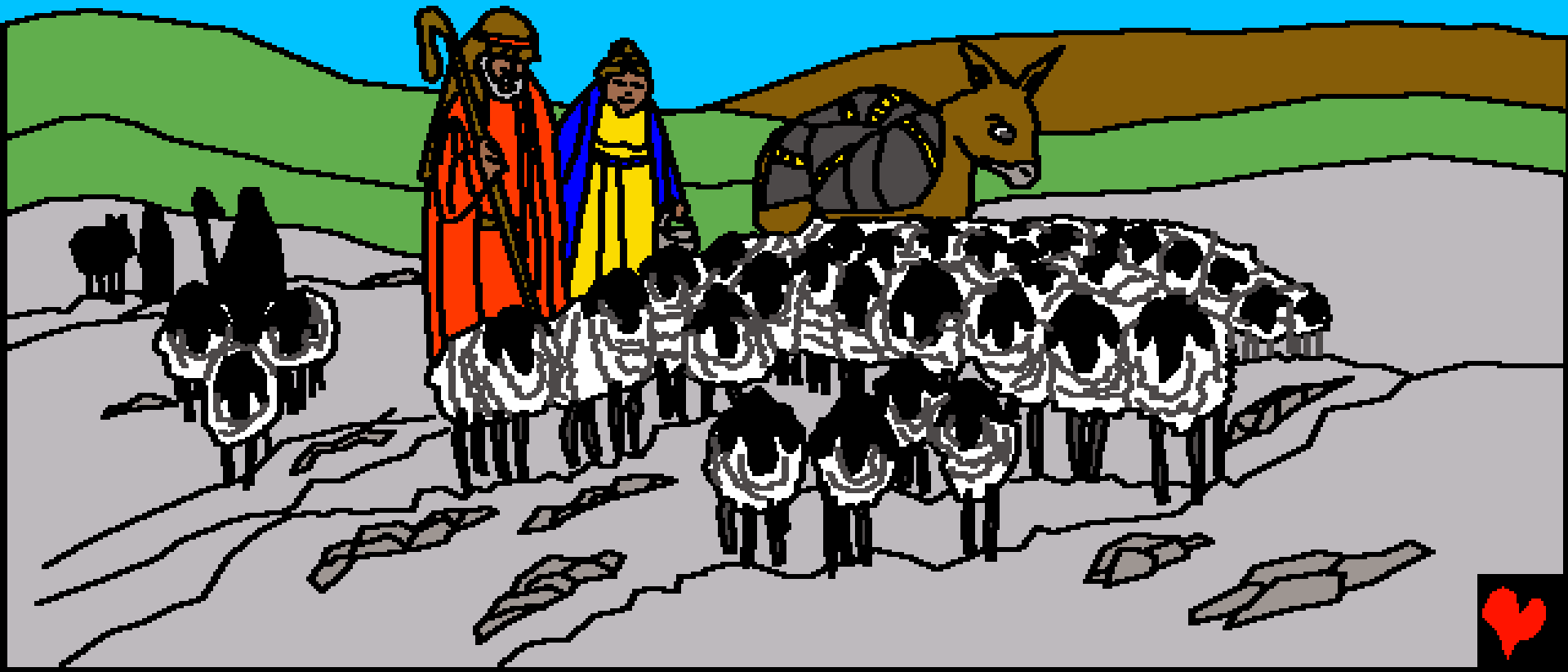
Pathian chuan he ti ang tak hian ani ram hrang
hrang leh hnam hrang hrang a lo din tan tak ani.
An khawpui rauhsan chu ahming Babel ani a, chu
chu chi-ai tih
na ani.



Kum tam tak aral hnu in
kaldai-ho khua Ur ah
pathian in mi pakhat
Abrama chu a bia
a, i khaw lam ata
leh i laichinte ho
zing atan leh I pa
in ata chhuak la,
ram ka la entir
tur che lam
ah kal rawh
ti thu
a pe a.



Abraman Pathian thupek a awih avang in Kanaan ram
ah ahruai lut a, a nupui Saraii leh atupa Lota ten an
zui ve a.



Kanaan ramah chuan Abrama leh Lota
chu an lo hausa ta hle a, Beram rual
te leh bawng rual te tam tak nei an
khawsak ho avang in an ran te tan
tlatna tur hmun in a daih ta lo va.



Lota ran Pute leh Abrama ran pute kar
ah chuan in hnial lo chhuak ta a. Nang
leh kei kar ah inhnial na awm suh se,
Abraman an ti a, "In tih hrang mai ila,
Lota, i duh na ber ram thlang hmasa
ang che" ti in tha thleng ta a.



Lota chuan ram tin a tui tam tak
awm chiikna leh khawpui leh khaw tam
tak awm na hmun a thlang a. He ram
athlang hi tha viau in lang mahse
a khawpui a chingte
chu misual tak tak

te ani
hlawm a.



Lota nen a an intihhran hnu chuan
Abrama hnenah Pathian arawn intar
leh ta a, Kanaan ram zawng zawng
hi nang leh i thlahte kumkhua atan
ka pedawn che u ani ti in atiam
leh a.

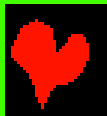


Abrama leh Saraii hi fa nei lo
ni si a, eng tin nge pathian in
a thu inti amkam na ropui tak
a hlenchhuah ang le?





Pathian hnen atang in mi Pathum Abrama
leh Saraii va tlawh in anvakal a.





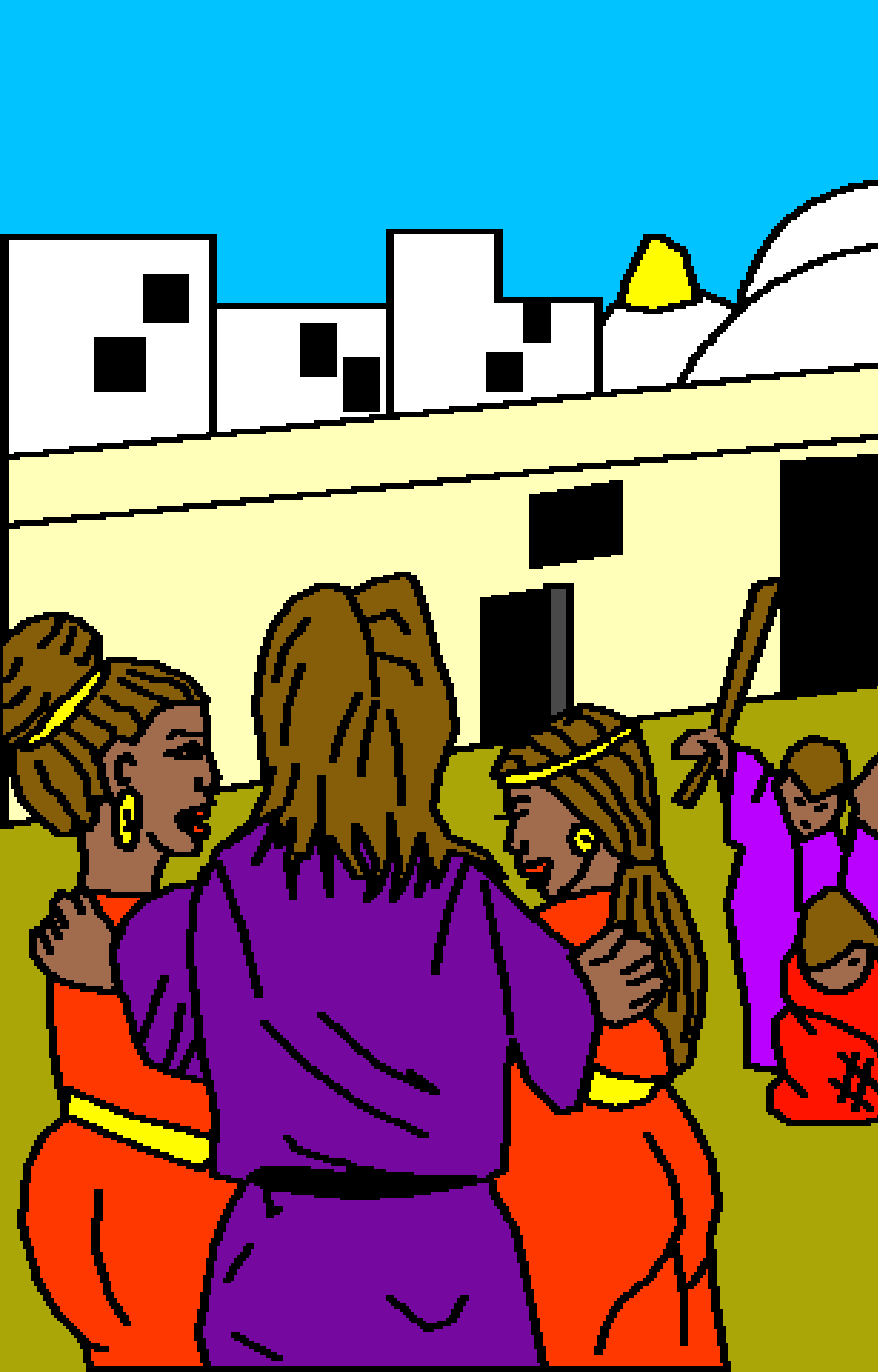
Chun Pathian mi tir te chuan "I Nupui Saraii chuan fapa a nei ang an rawn ti a", Saraii chu pathian thu tiam an sawi ahriat avang in an nui a, ani lah kum sawm kua a Upa ani tawh si a, ...





... Pathian chuan tun atang in Abrahama (Chawimawi pa) tih a koh ani tawh ang, Saraii pawh Sari (Lalfanu) ti a ahriat ani taw ang ati a.





Pathian Abraham hnenah pawh Sodom leh Gomora khawpui a chengte chu an sual na te avang in a tiboral dawn tih ahrilh a, Abraham Tupa Lota leh Chhungte chu Sodom

khawpui a cheng an ni a.

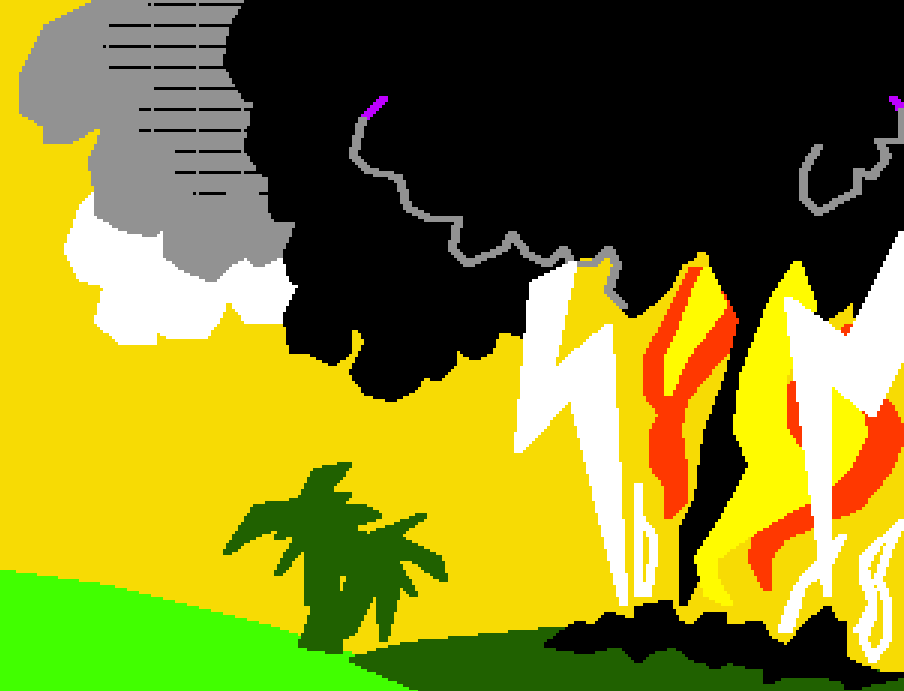


Lota Chuan Pathian in
Sodom a tihchhiat
tur ahriat in aring
a, nimahsela a
makpa chuan Sodom
chhuansan an duh
lo va. Ava han
lungchhiatthlak
em, Pathian thu an
hring si lo va.



Lota leh afanu panihte
chuah chu him dam in an
awm a, kat leh mei a Lalpa
chuan misual te chen na
Sodom leh Gomora khawpui

chu a halral
ta a.



Van duaithlak tak in Lota
nupui chuan Pathian thuzawm
lovin khawpui rang te chu a
thlir kir avang in
chi khawn dinga
a changta.



Lalpa Chuan
Abrahama leh Sari
hnen a intiamkamna
chu ahlen chhuak
a, kum Upa tak
ni ve ve tawh
mahse Pathian
thutiam ang ngei
in fapa pek in an
awm ta a. Isaka
a rawn pian in
an va lawm
nasa em.



Pathian in an
intiamkamna ang a
Kanaan ram chu amah
leh athlahte chatuan
atan a pek tur chu
Abrahama pawn
angaihtuah

ve ngei
thin ang le.



Pathian in he
intiamkam na hi
a hlen ngei dawn
ani. Pathian in
aintiamkam na
a hlen vek
thin si a.



Pathian Intiamkamna Abraham Hnenah

Pathian lehkhabu atang a Pathian Thu
nen a inmil thawnthu chu

hengah te hian a hmuh theih

Genesis 11 - 21

"I thu hrilhfiah hian mitte a tieng a;
Mi mawlte chu a hriat thiamtir thin."

Sam 119:130



A tawp ta



He Bible thawnthu hian Pathian ropui zia
leh Amah hrereng tura min duhzia min hriattir ani.

Pathianin thil thalo tam tak, Ani in sual atih chu kan ti tih a
hria a. Sual man chu thihna ani, nimahsela Pathianin khawvel a
hmangaih em em a, chutichuan a Fapa mal neih chhun a pe a,
amah chu tupawh a ring apiang an boral loh va, chatuana
nunna an neih zawk nan.

He thu hi a dik ani tih I rin chuan
hetiang hian Pathian hnenah sawi rawh:

Ka Lal Isua duhtak, Nangmah chu Pathian I ni tih ka ring a, ka
sual avang a thi tur in mihring ah ilo piang a, tunah chuan I nung
leh ta. Khawngaihtakin ka nunah lo awm la ka sual min ngaidam
ang che. Chutichuan nun thar ka lo neih a chatuan a nangmah nen
a kan awm dun theih nan. Khawngaihtakin Nangma thu awih a, I
fa ni a, I tan a nung reng tur in min tichak ang che. Amen.

Pathian Lehkhabu Thianghlim chu nitin chhiar la Amah
nen nitin hun hmangdun ang che u. Johana 3:16

