

Naupang te tana Pathian Lehkhabu Thianghlim  
I hnenrawn thlentu

Pathian  
Intiamkamna  
Abraham  
Hnenah



Ziaktu: Edward Hughes

Milem nena sawifiahtu: Byron Unger; Lazarus

A hmeh leh remchang zawnga lettu:  
M. Maillot; Tammy S.


Letlingtu: George Kaizomlal M.Div

Chhuahtu: Bible for Children  
[www.M1914.org](http://www.M1914.org)

©2017 Bible for Children, Inc.

Phalna: He thawnthu hi sumdawn na atan a hman  
anah loh phot chuan I duh ang in ziah chhawn  
emaw khawla chhut chhawn phal ani.





Tui let atanga hun  
tam tak a ral hnu in,  
khawvel a chengten  
ruahman na  
siam a.



Hawh u, Khawpui i din  
ang, in sang tak, van  
tawng sa ila, an ti a,  
Kan cheng ho reng  
thei ang a,



... chutilo chu khawvel  
ah kan awm darh  
zo dah ang e, ti  
in thutlukna an  
siam a, ...



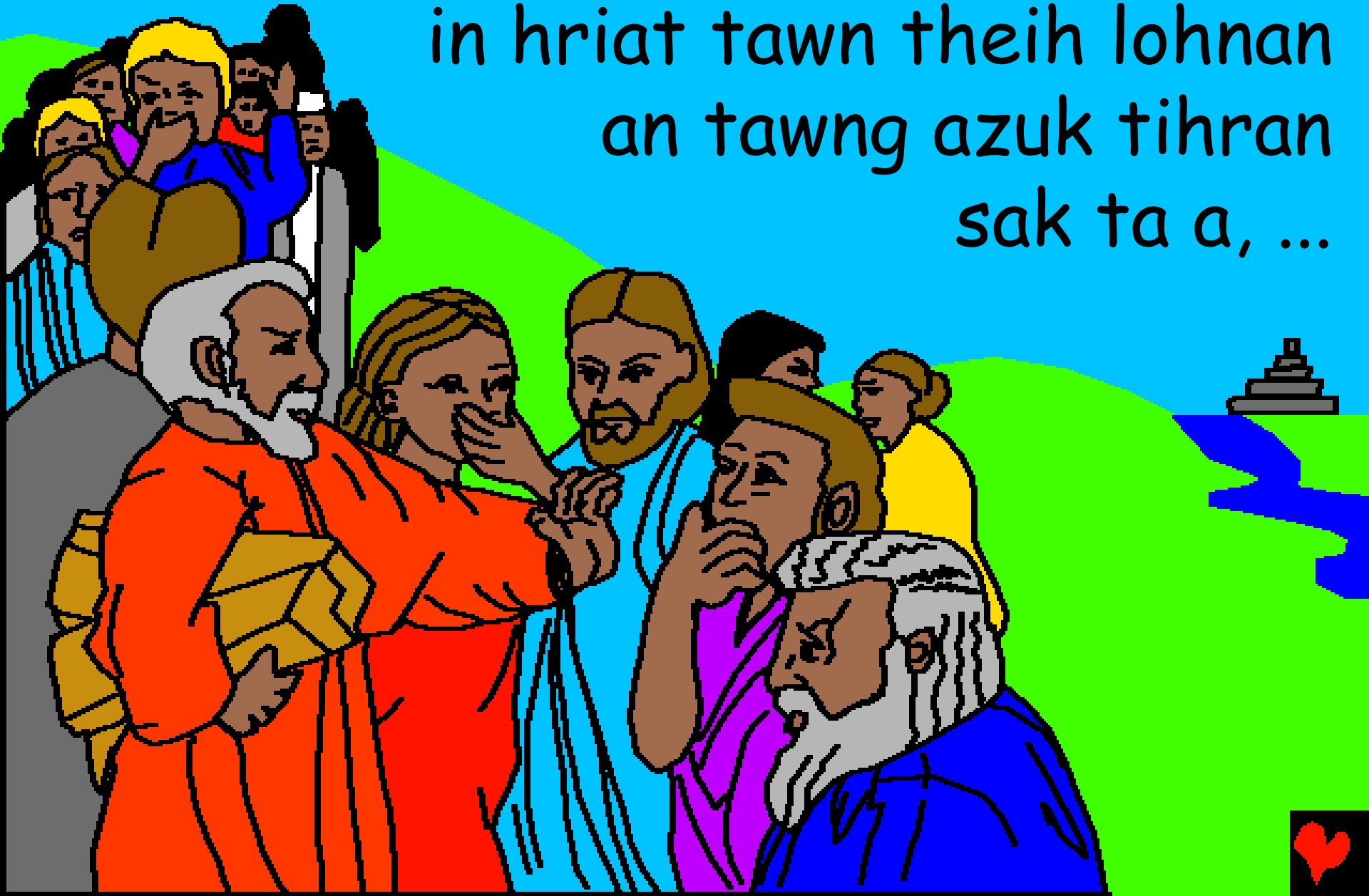
... khawvel pum puiah  
chutih lai chuan tawng  
khat an hmang a, an  
awphawi pawh a  
inang vek a.



Pathian chuan a siam mihringte chu  
lei a hmun tin a cheng darh  
tur in a duh a, Amah vek  
chuan thil ropui tak a  
ruahman a, ...



... chawplehchilh in tawng an  
in hriat tawn theih lohnan  
an tawng azuk tihran  
sak ta a, ...





... chuta tang chuan pathian chuan  
tawng hrang hrang siam in  
mihringte chu ram tin ah  
ahnawt darh ta a.



Khawvel a cheng mihringte tawng alo  
hran tak avang in tawng intawnte  
chu hmun



hran hran  
ah an darh  
ta vek a.



Pathian chuan he ti ang tak hian ani  
ram hrang hrang leh hnam hrang  
hrang a



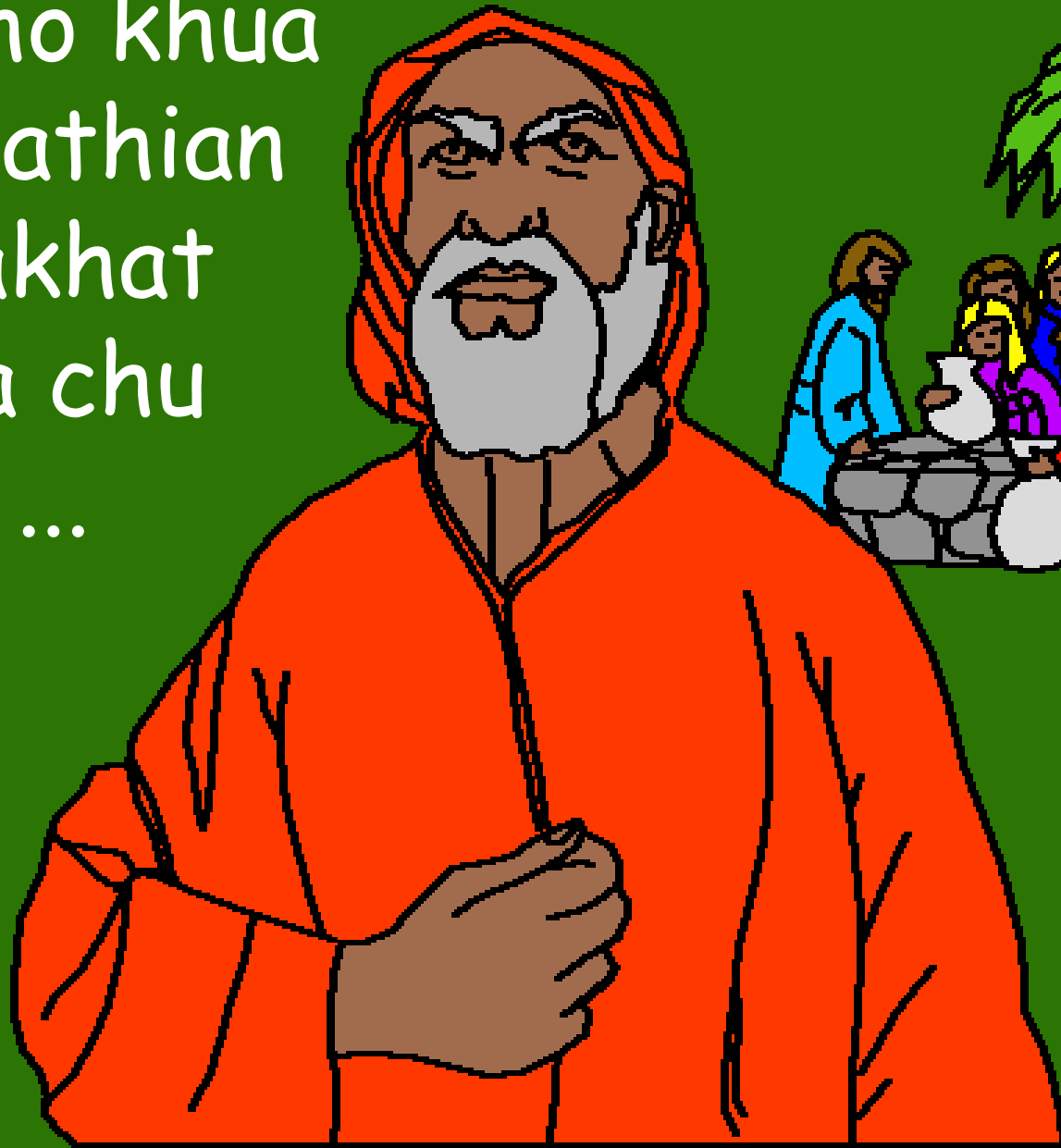
lo din tan  
tak ani.



An khawpui rauhsan chu ahming  
Babel ani a, chu chu chi-ai tih  
na ani.



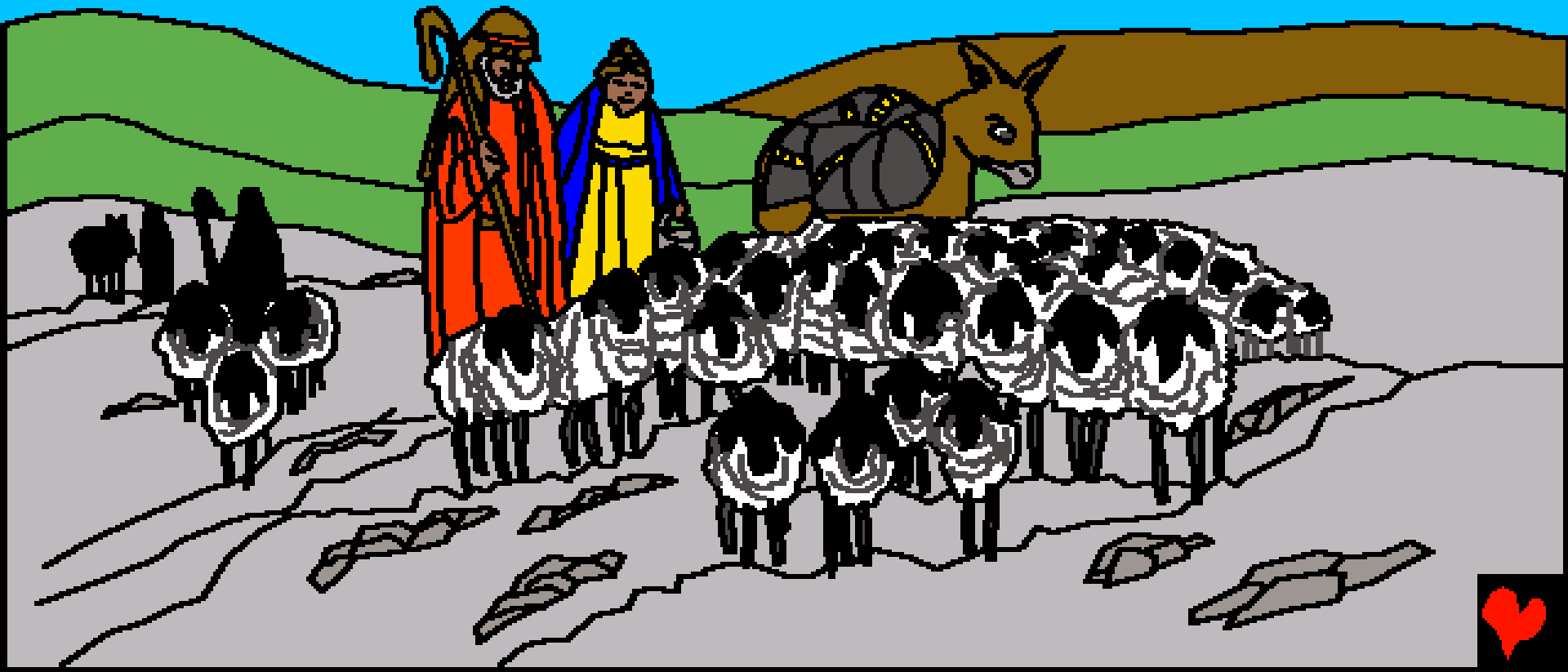
Kum tam tak aral hnu in  
kaldai-ho khua  
Ur ah pathian  
in mi pakhat  
Abrama chu  
a bia a, ...



... i khaw lam ata leh i laichinte  
ho zing atan  
leh I pa in ata  
chhuak la, ram  
ka la entir tur  
che lam ah  
kal rawh  
ti thu  
a pe a.



Abraman Pathian thupek a awih  
avang in Kanaan ram ah ahruai lut a,  
a nupui Saraii leh atupa Lota ten an  
zui ve a.



Kanaan ramah chuan  
Abrama leh Lota chu  
an lo hausa ta hle a, ...





... Beram rual te leh bawng rual  
te tam tak nei an khawsak  
ho avang in an ran te tan  
tlatna tur hmun in a daih



ta lo va.



Lota ran Pute leh Abrama  
ran pute kar ah chuan in  
hnial lo chhuak ta a.



Nang leh kei kar ah inhnial na awm  
suh se, Abram an ti a, "In  
tih hrang mai ila, Lota, i duh  
na ber ram thlang hmasa ang  
che" ti in tha thleng ta a.



Lota chuan ram tin a tui  
tam tak awm chiikna leh  
khawpui leh khaw tam  
tak awm na hmun

a thlang a.



He ram athlang hi tha viau  
in lang mahse a khawpui  
a chingte chu misual  
tak tak te ani

hlawm a.



Lota nen a an intihhran  
hnu chuan Abrama  
hnenah Pathian arawn  
intar leh ta a, ...



... Kanaan ram zawn  
zawn hi nang leh i  
thlahte kumkhua atan  
ka pedawn che u ani ti in

atiam  
leh a.





Abrama leh Saraii hi  
fa nei lo ni si a, eng  
tin nge pathian in a thu  
intiamkam na ropui tak a

hlenchhuah  
ang le? /







Pathian hnen  
atang in mi Pathum Abrama leh  
Saraii va tlawh in anvakal a.





... Chun Pathian mi tir te chuan "I  
Nupui Saraii chuan fapa a nei ang an  
rawn ti a", Saraii chu pathian ...





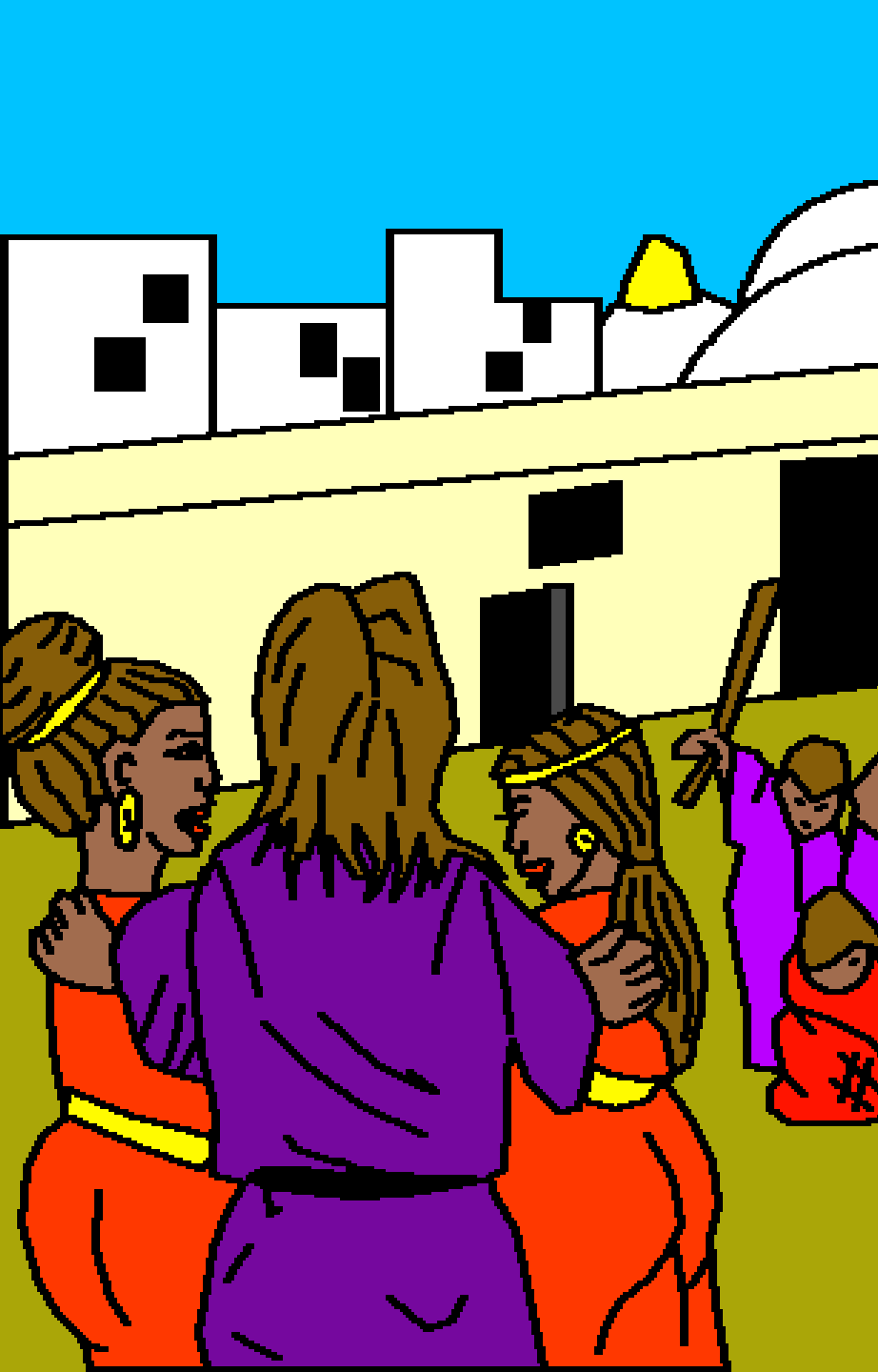
... thu tiam an sawi ahriat avang in an  
nui a, ani lah kum sawm kua a Upa ani  
tawh si a, Pathian chuan tun ...





... atang in Abraham  
tih a koh ani tawh ang, Saraii pawh  
Sari ti a ahriat ani taw ang ati a.

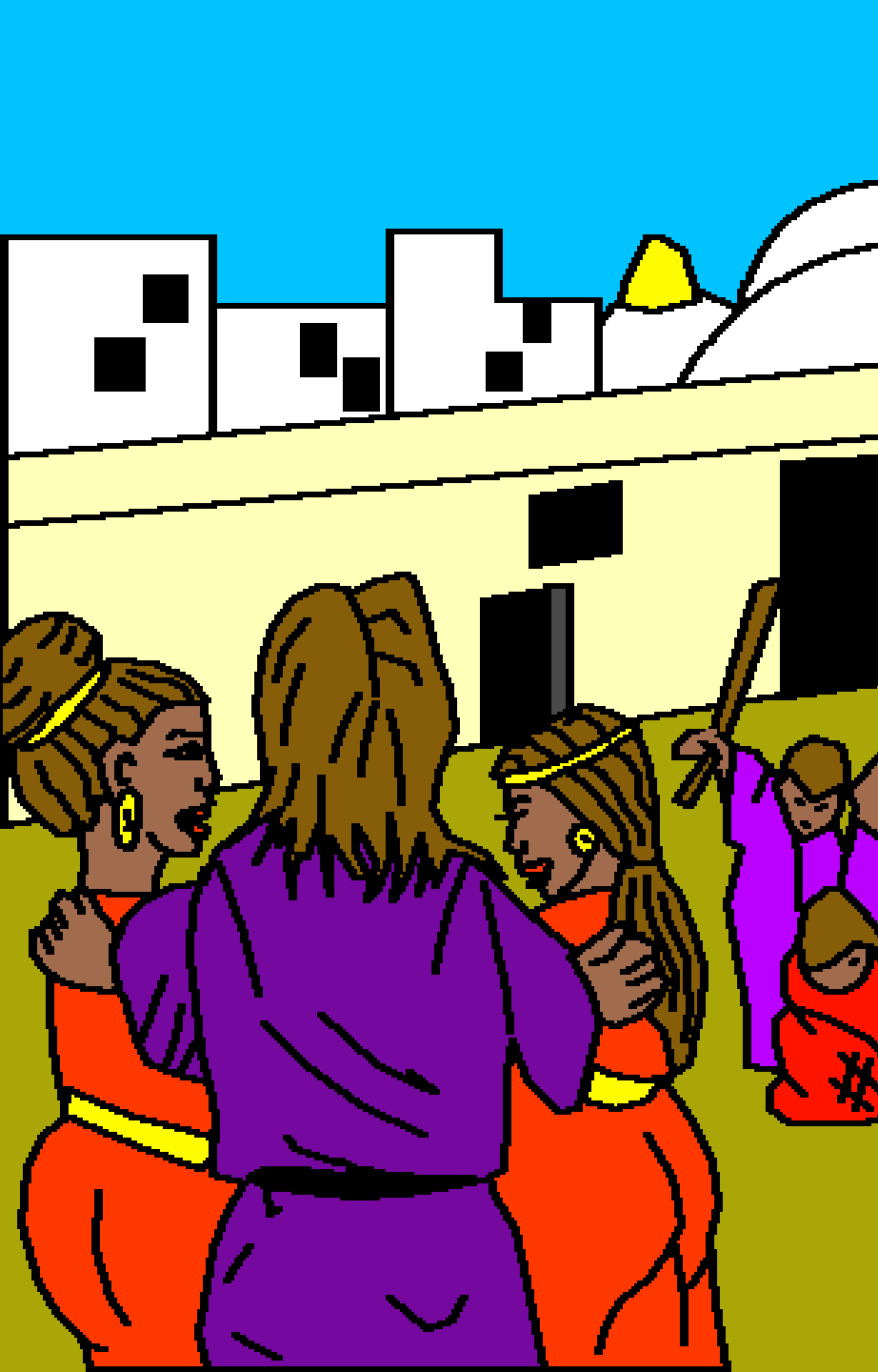




Pathian Abraham  
hnenah pawh  
Sodom leh Gomora  
khawpui a chengte  
chu an sual na te  
avang  
in a

tiboral dawn  
tih ahrilh a, ...





... Abraham  
Tupa Lota leh  
Chhungte chu  
Sodom khawpui  
a cheng an ni a.



Lota Chuan  
Pathian in Sodom  
a tihchhiat tur  
ahriat in aring  
a, nimahsela  
a makpa  
chuan Sodom  
chhuansan an  
duh lo va.



Ava han  
lungchhiatthlak  
em, Pathian  
thu an hring  
si lo va.





Lota leh afanu  
panihte chuah chu  
him dam in an awm a,  
kat leh mei a Lalpa chuan  
misual te chen na

Sodom leh Gomora  
khawpui  
chu a  
halral  
ta a.



Van duaithlak tak  
in Lota nupui chuan  
Pathian  
thuzawm ...



... lovin khawpui rang  
te chu a thlir kir  
avang in chi  
khawn dinga



a changta.



Lalpa Chuan  
Abrahama  
leh Sari  
hnen a  
intiamkamna  
chu ahlen  
chhuak a, ...



... kum Upa  
tak ni ve ve  
tawh mahse  
Pathian  
thutiam  
ang ngei in  
fapa pek in  
an awm ta a.  
Isaka a rawn  
pian in an va  
lawm nasa em.



Pathian in  
an intiamkamna  
ang a Kanaan  
ram chu amah  
leh



athlahte  
chatuan ...



... atan a  
pek tur chu  
Abrahama  
paw  
angaihtuah



ve ngei  
thin ang le.



Pathian in he  
inti amkam na  
hi a hlen ngei  
dawn ani. Pathian  
in aintiamkam

na  
a hlen

vek  
thin si a.





Pathian Intiamkamna Abraham Hnenah

Pathian lehkhabu atang a Pathian Thu  
nen a inmil thawnthu chu

hengah te hian a hmuh theih

Genesis 11 - 21

"I thu hrilhfiah hian mitte a tieng a;  
Mi mawlte chu a hriat thiamtir thin."

Sam 119:130



A tawp ta



He Bible thawnthu hian Pathian ropui zia  
leh Amah hrereng tura min duhzia min  
hriattir ani.

Pathianin thil thalo tam tak, Ani in sual  
atih chu kan ti tih a hria a. Sual man  
chu thihna ani, nimahsela Pathianin  
khawvel a hmangaih em em a, chutichuan  
a Fapa mal neih chhun a pe a, amah chu  
tupawh a ring apiang an boral loh va,  
chatuana nunna an neih zawk nan.



He thu hi a dik ani tih I rin chuan  
hetiang hian Pathian hnenah sawi rawh:  
Ka Lal Isua duhtak, Nangmah chu Pathian I ni  
tih ka ring a, ka soal avang a thi tur in mihring  
ah ilo piang a, tunah chuan I nung leh ta.  
Khawngaihtakin ka nunah lo awm la ka soal min  
ngaidam ang che. Chutichuan nun thar ka lo  
neih a chatuan a nangmah nen a kan awm dun  
theih nan. Khawngaihtakin Nangma thu awih  
a, I fa ni a, I tan a nung reng tur in min tichak  
ang che. Amen.

Pathian Lehkhabu Thianghlim chu nitin chhian  
la Amah nen nitin hun hmangdun ang che u.  
Johana 3:16

