

Naupang te tana Pathian Lehkhabu Thianghlim  
I hnen rawn thlentu

Mihring lungngaihna  
intanna chu



Ziaktu: Edward Hughes

Milem nena sawifiahtu: Byron Unger; Lazarus

A hmeh leh remchang zawnga lettu:  
M. Maillot; Tammy S.

Letlingtu: C. Lyani

Chhuahtu: Bible for Children  
[www.M1914.org](http://www.M1914.org)

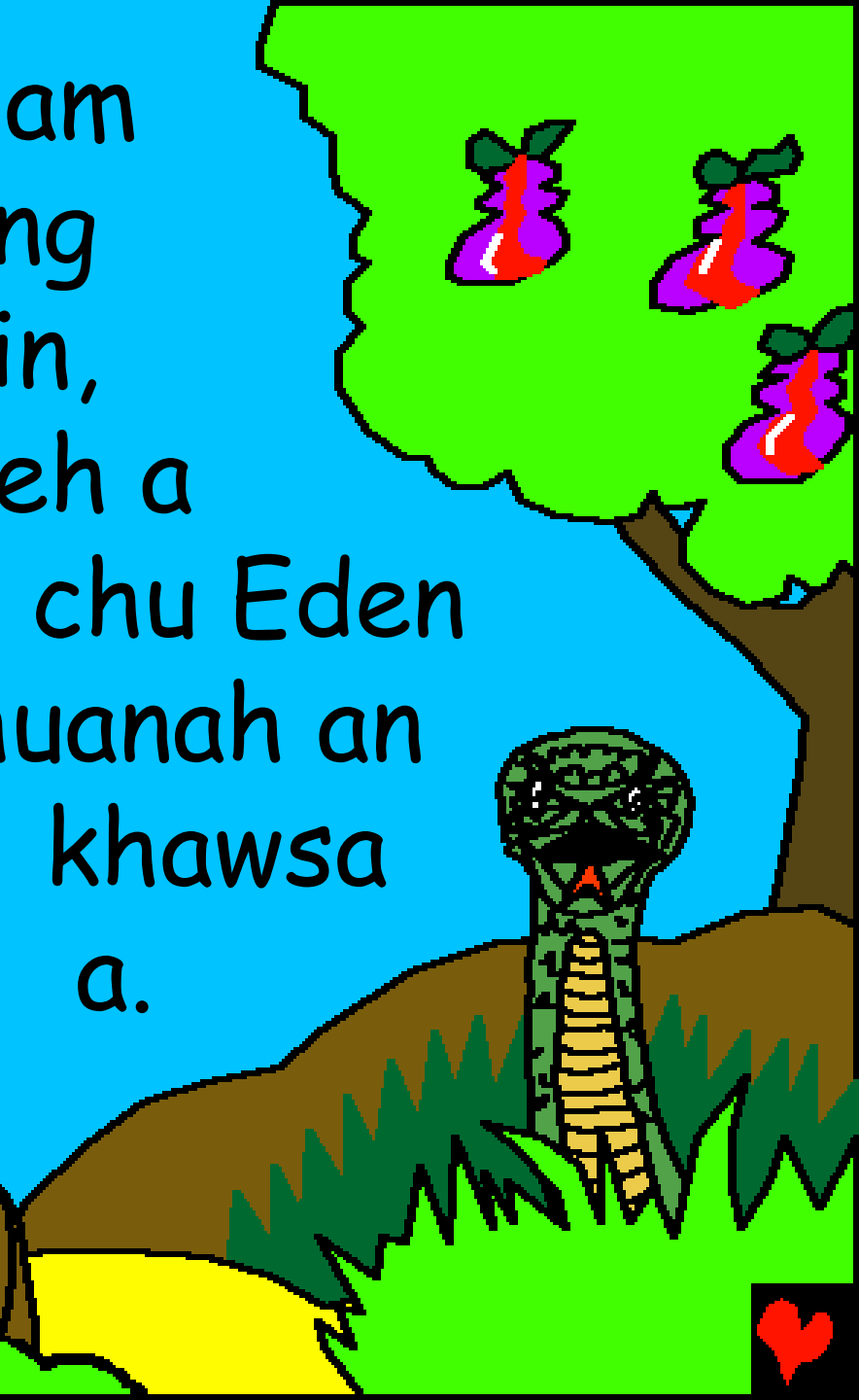
©2012 Bible for Children, Inc.

Phalna: He thawnthu hi sumdawn na atan a hman  
anah loh phot chuan I duh ang in ziah chhawn  
emaw khawla chhut chhawn phal ani.



Engkim hi Pathian siam  
ani! Pathianin mihring  
hmasa ber a siam lain,

Adama leh a  
nupui Evi chu Eden  
huanah an  
khawsa  
a.



Hlimtak leh Pathian  
thuawih tak in an om  
thin a mahse nikhat  
chu ...



"Pathianin,  
Huana thing  
rah rêng rêng  
hi in ei tûr a  
ni lo, a ti elo  
maw?" a ti a.





Tin,  
hmeichhia  
chuan rûl  
hnênah chuan,  
"Ti lo ve, huana  
thing rahte hi  
kan ei thei  
asin: ...





... huan lai  
taka thing awm  
rah erawh chu  
Pathianin, In ei tûr a ni lo,  
tawh pawh in tawk tûr a ni  
lo, chutilochuan  
in thi ang, a ti a  
ni", a ti a.



In ei nî  
atang chuan  
Pathian ang in  
lo ni dâwn a ni.  
Evi chuan thing  
rah chu ei mi  
a ni tih leh, ...







... mit la tak  
a ni tih leh,  
mi tifing tûrin  
thing rah îtawm  
tak a ni tih a hriat  
chuan thing a rah  
thenkhat chu a  
lo va, a ei ta a.

Evi in Pathian thu a  
awihloh hnu chuan thei  
chu a pasal Adama chu  
a peve ta a.



Adama chuan "Äih,  
Pathian thu ka hnial  
thei lo" lo tih awmtak  
ania.





Adama  
leh Evi ten thil  
an tihsual hnu chuan saruak  
anni tih an in hrechhuak a.





Tichuan  
theipui hnah an thui khâwm a,  
pawnfên an insiam chawp a, LALPA  
Pathian chu an lo bihrûksan ta ani.



Tin, LALPA Pathian chu huana  
tlai nî nêmah alo lêng a:  
Pathian chuan an thil tih  
chu a hre reng a. Adama  
chuan Evi a puh a. Evi  
chuan rul a puh  
bawk a.



Pathian chuan rul hnenah, "ânchhe dawngin i awm bîk ang" ati a. Hmeichhe hnênah chuan, "I hreawmna leh i nau paina chu nasa takin ka tipung ang a; hreawm takin fa i hring thîn ang" a ti a.



Tin, Adama hnênah chuan, "Ka  
thu I awihloh avângin lei hi  
nangmah avângin ânchhe  
dawngin a awm ta a ni; i  
dam chhông zawngin rim  
taka thawkin a rah chu  
i ei tawh ang  
a ti a."





Tichuan Pathian chuan  
eden huan ata chu a  
hnawtchhuak  
ta a.



An suauna avang  
in Pathian lak ata  
lak hnan in an  
awm ta a.





Pathian chuan  
nunna thing kawng chu  
vêng tûrin Eden huan  
chhak lampangah  
chuan ...



... Cherub-te

leh mei khandaih  
vir tawn zawk  
zawk chu a  
awmtîr ta  
bawk a.



Tin, LALPA

Pathian chuan Adama tân  
leh a nupui tân chuan  
savun kawrfualte a  
siamsak a,  
a haktîr  
ta a.





Mahse Pathian khan  
kha savun kha khawi  
atang in  
nge a lak  
ang le?



Chutih hunlai chuan chhungkua an  
insiam a. An fapa hmasa zawk Kaina  
chu leiettu ani a. An fapa  
pahnihna Abela  
chu berâm  
vêngtu  
ani.



Nikhat chu heti hi a ni a, Kaina  
chuan LALPA hnêna hlan atân lova  
thlahnhah a rawn la a.

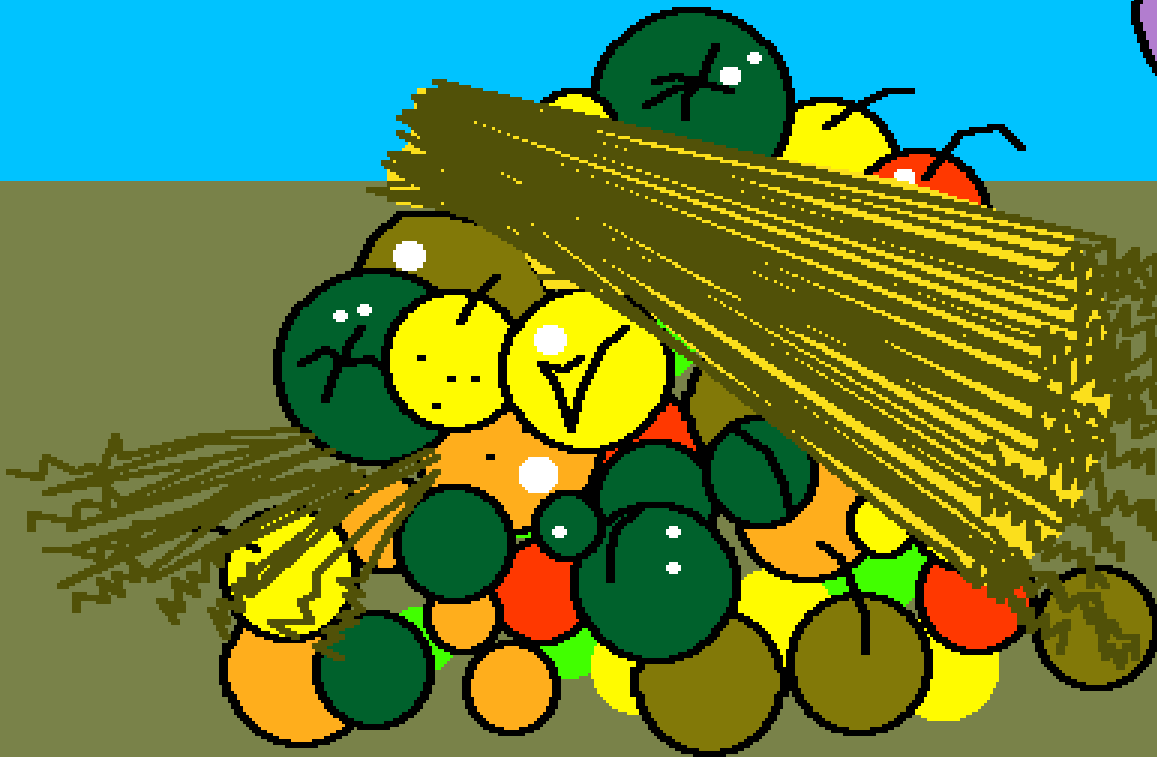




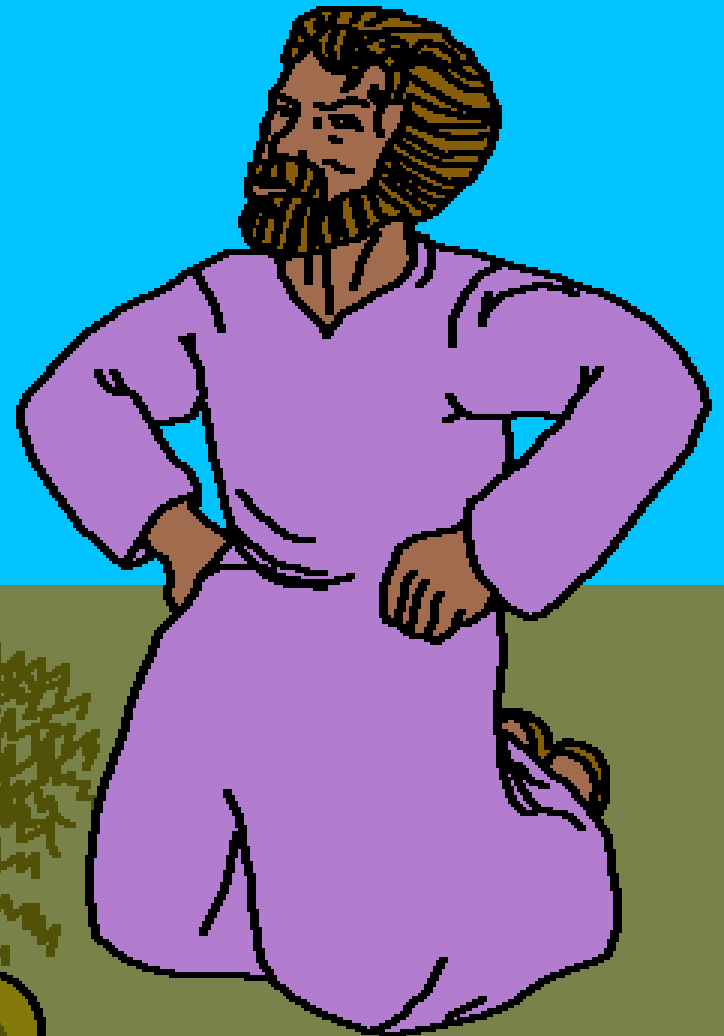
Tin, Abela pawh chuan a berâm rual  
zînga piang hmasa berte leh a thau  
chu a rawn la bawk a. Tin,  
LALPA chuan Abela leh a  
thil hlan  
chu a  
lâwm a.



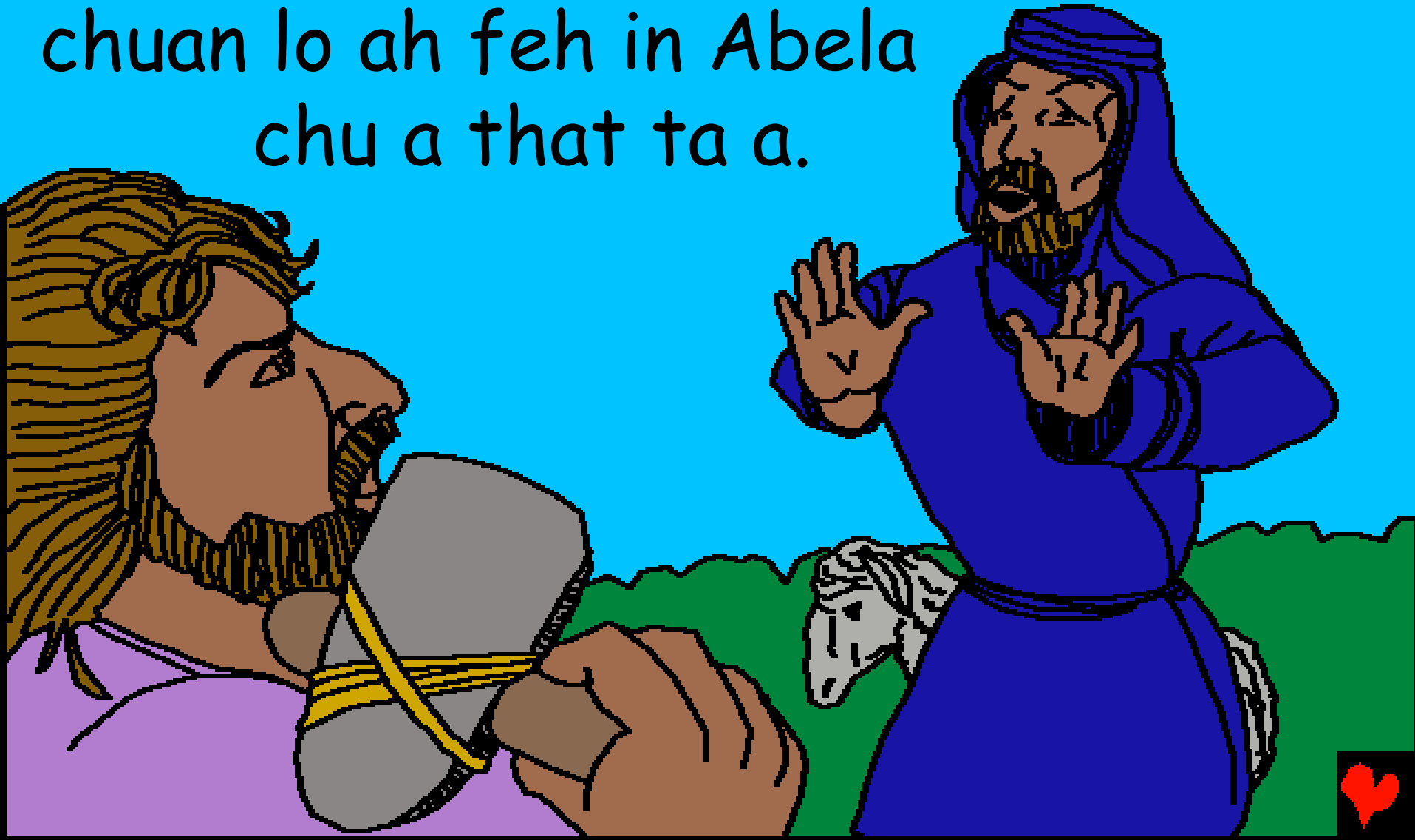
Kaina thil hlan erawh chu  
Pathian in a lawm ve loh  
avangin Kaina chu a  
thin a rim a, ...



... nimahsela Pathian  
chuan thil i tih that  
chuan lawm i hlawh  
dâwn lo vem ni?  
a ti a.



Kaina thin ur na chu a reh mai  
loh avangin a nakin deuhah  
chuan lo ah feh in Abela  
chu a that ta a.



Tichuan LALPA chuan Kaina hnênah  
chuan, "I nau Abela kha khawiah nge  
a awm tak?" a ti a. Tin,  
a ni chuan, "Ka hre lo.  
Ka nau vêngtu ka ni em  
ni?" a ti a.



Chuvangin Pathianin Kaina chu a  
hrem in, lei i leh pawhin a thatna  
chu a pe phal tawh lo vang  
che; leiah hian tlân bo  
leh vâkvai i lo ni tawh  
ang, a ti a.



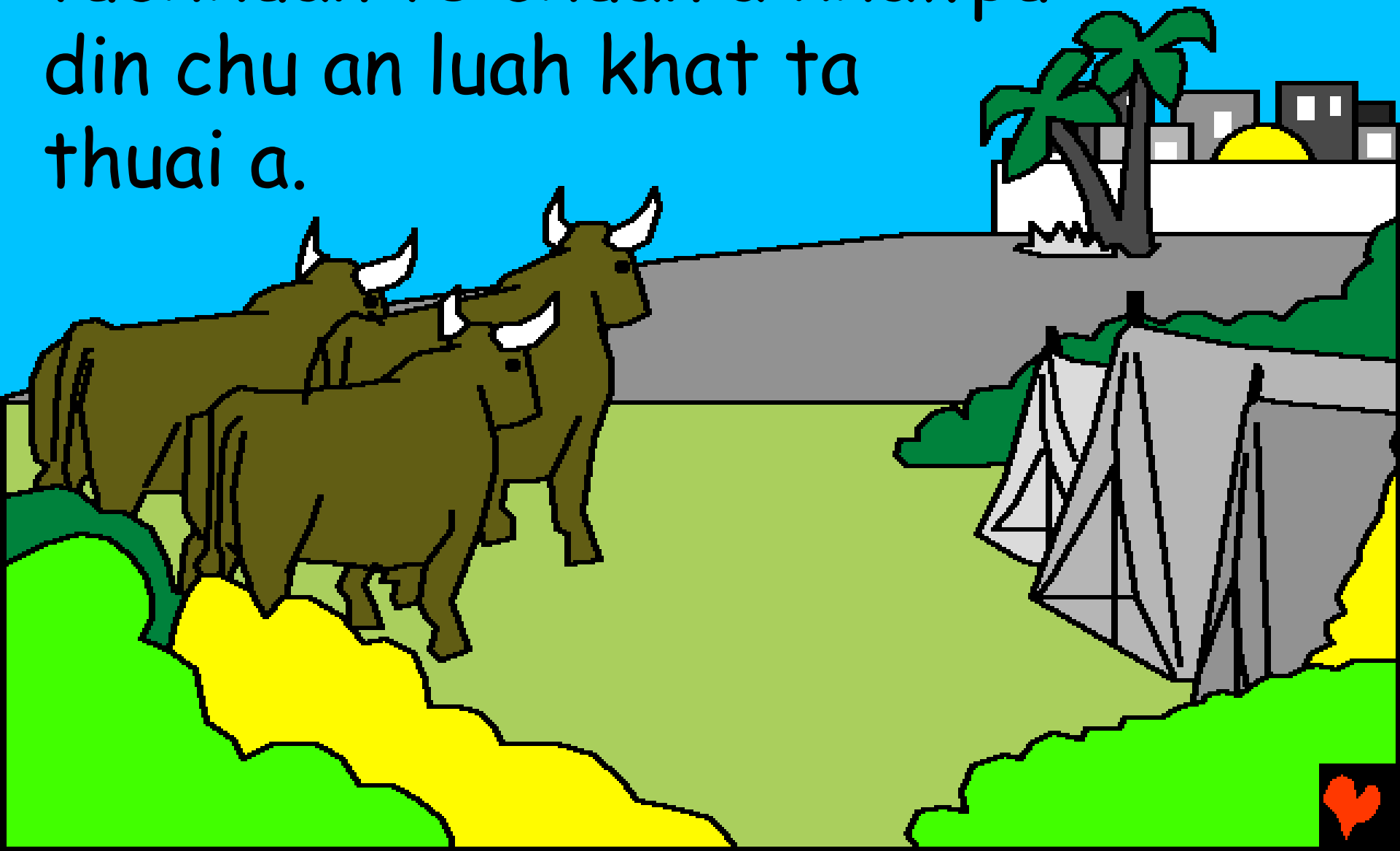
Tichuan Kaina chu LALPA hnên  
ata chu a chhuak in nupuiah  
Adama leh Evi te fanu  
chu a nei in



chhungkua  
an din ta  
a.



Reilote chhung in Kaina tu leh  
tuchhuan te chuan a khawpui  
din chu an luah khat ta  
thuai a.





Chutih hunlai chuan Adama leh Evi  
te chhungkua chu an inthlah  
pung chak em em mai a.



Khatih hunlai kha chuan  
mihring te poh an dam  
chen a sei zawk thin ani.



An fapa SETHA a pianni in Evi chuan  
Pathianin Abela aiah chi thlah  
dang mi ruatsak ta a ti a.



Setha chu Pathian tih mi tak ni  
in kum 912 a dam a fanu leh  
fapate a nei hlawm ani.



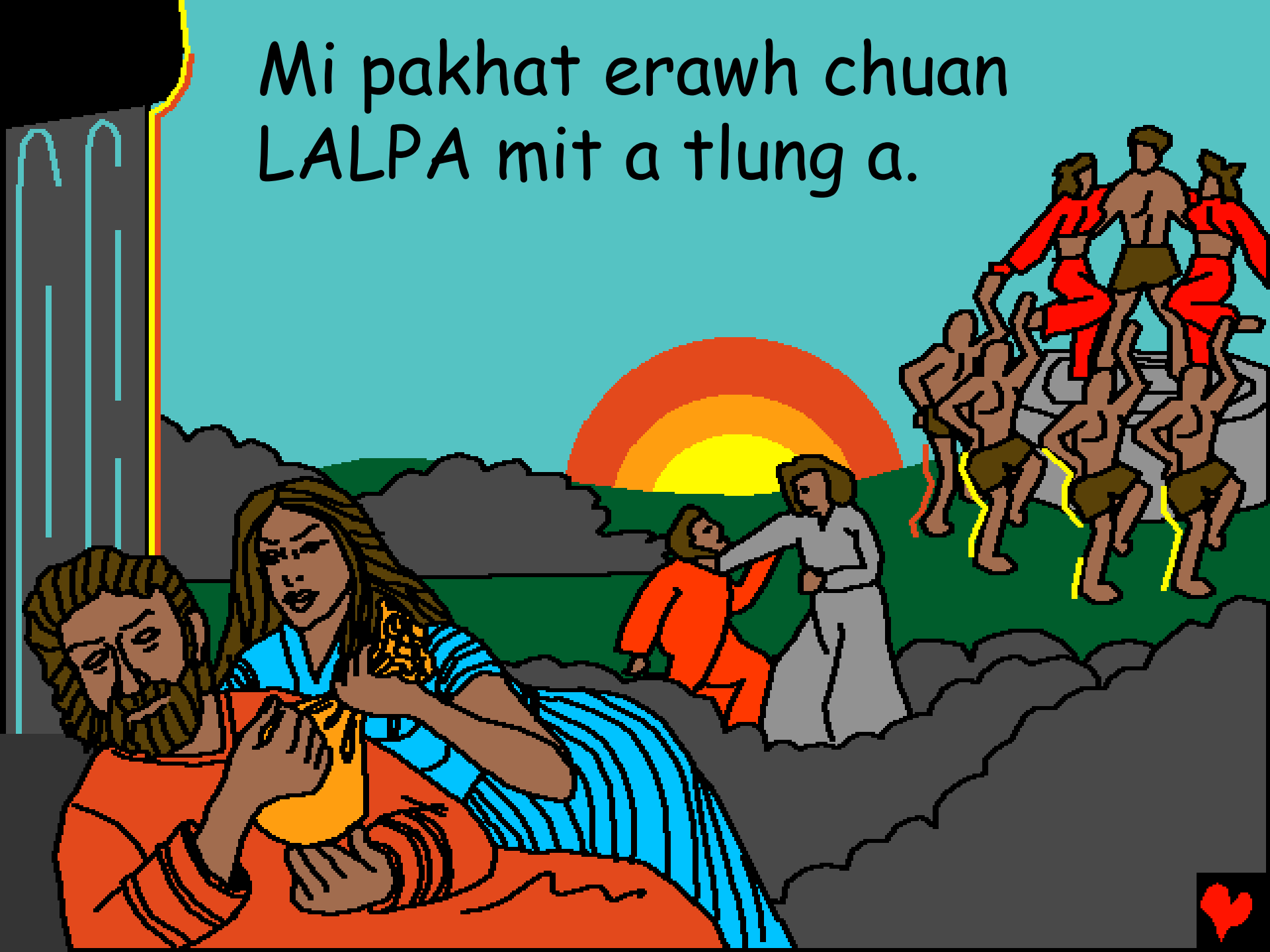
Khovela mihringte chu an  
lo sual tak em avangin  
Pathianin khovel chu  
tihchhiat a tum  
ta a ...



... ramsa te chunglêng sava  
te nêl lam hian; Ka siam  
tâk avângin Ka inchhîr  
a ni, a ti a.



Mi pakhat erawh chuan  
LALPA mit a tlung a.



Chu pa chu Nova ani. Nova chu  
Setha thlah a ni a, mi fel  
tak niin Pathian nêh an  
lêh dên thên a ni.





Nova chuan a fapa te pathum  
chu Pathian thu awih turin  
a zirtir thin a.



Tichuan Pathian in Nova  
chu danglam bik tak a  
hman a tum ta a.



Mihring lungngaihna intanna chu

Pathian lehkhabu atang a Pathian Thu  
nen a inmil thawnthu chu

hengah te hian a hmuh theih

Genesis 3 - 6

"I thu hrilhfiah hian mitte a tieng a;  
Mi mawlte chu a hriat thiamtir thin."

Sam 119:130



A tawp ta



He Bible thawnthu hian Pathian ropui zia  
leh Amah hrereng tura min duhzia min  
hriattir ani.

Pathianin thil thalo tam tak, Ani in sual  
atih chu kan ti tih a hria a. Sual man  
chu thihna ani, nimahsela Pathianin  
khawvel a hmangaih em em a, chutichuan  
a Fapa mal neih chhun a pe a, amah chu  
tupawh a ring apiang an boral loh va,  
chatuana nunna an neih zawk nan.



He thu hi a dik ani tih I rin chuan  
hetiang hian Pathian hnenah sawi rawh:  
Ka Lal Isua duhtak, Nangmah chu Pathian I ni  
tih ka ring a, ka sual avang a thi tur in mihring  
ah ilo piang a, tunah chuan I nung leh ta.  
Khawngaihtakin ka nunah lo awm la ka sual min  
ngaidam ang che. Chutichuan nun thar ka lo  
neih a chatuan a nangmah nen a kan awm dun  
theih nan. Khawngaihtakin Nangma thu awih  
a, I fa ni a, I tan a nung reng tur in min tichak  
ang che. Amen.

Pathian Lehkhabu Thianghlim chu nitin chhiar  
la Amah nen nitin hun hmangdun ang che u.  
Johana 3:16

