

www.BibleForChildren.org



Yoan 14



Yesu isaav pa taghoniina toni ighaze: “Lolomim ipatajan ve agham ngar naol malep. Aghur ila to Maaron, ve aghur inim tiou paam. Tamañ ruum toni, le sosoor katindi to nepoonj. Inimale le sosoor katindi maau, tone irau nasaav payam tovene maau.”



“You pale namuun nala, ve nagharaat lemim inamim to nepoon izi tonowe. Ighaze nagharaata le isob, nene pale namuul nanim, ve naghham gham anim tiou. Leso aneep toman ghou izi ndug to you naneep pani.”



You Yoan, tonvetaz tiam. You nanim itamim ite pasa,
Yesu igham ghiit tanim le, ve itija taneep ila pooz
toni lolo wa. Tauto tamtoghon tighurghur

patanani pait. Eemoghon iit
tayoon ariana pa badoon



patanani to
ighamgham ghiit ne.

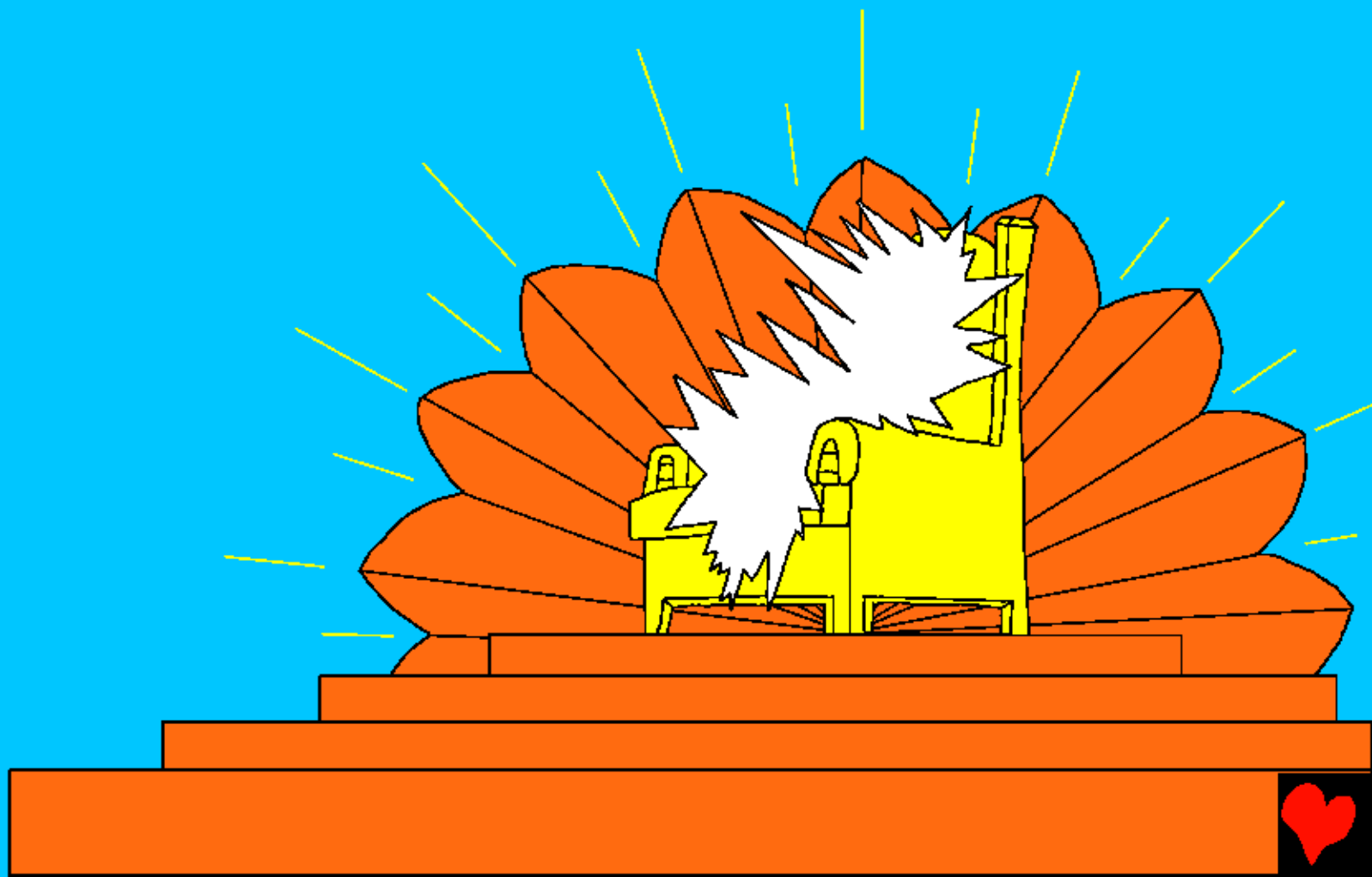


Aazne, tizurun ghou nanim naneep izi mutu
Patmos pasa, navotia Maaron aliņa pa
tamtoġhon, ve npariaaņ di pa tighur

ila to Yesu.



Rikia moghon Maaron Avuvu tapiri iza tiou, ve naghita
Maaron ina to ghamuun pooz iyoon izi ndug sambam,
ve Ŋgeu eez inepneep ila.

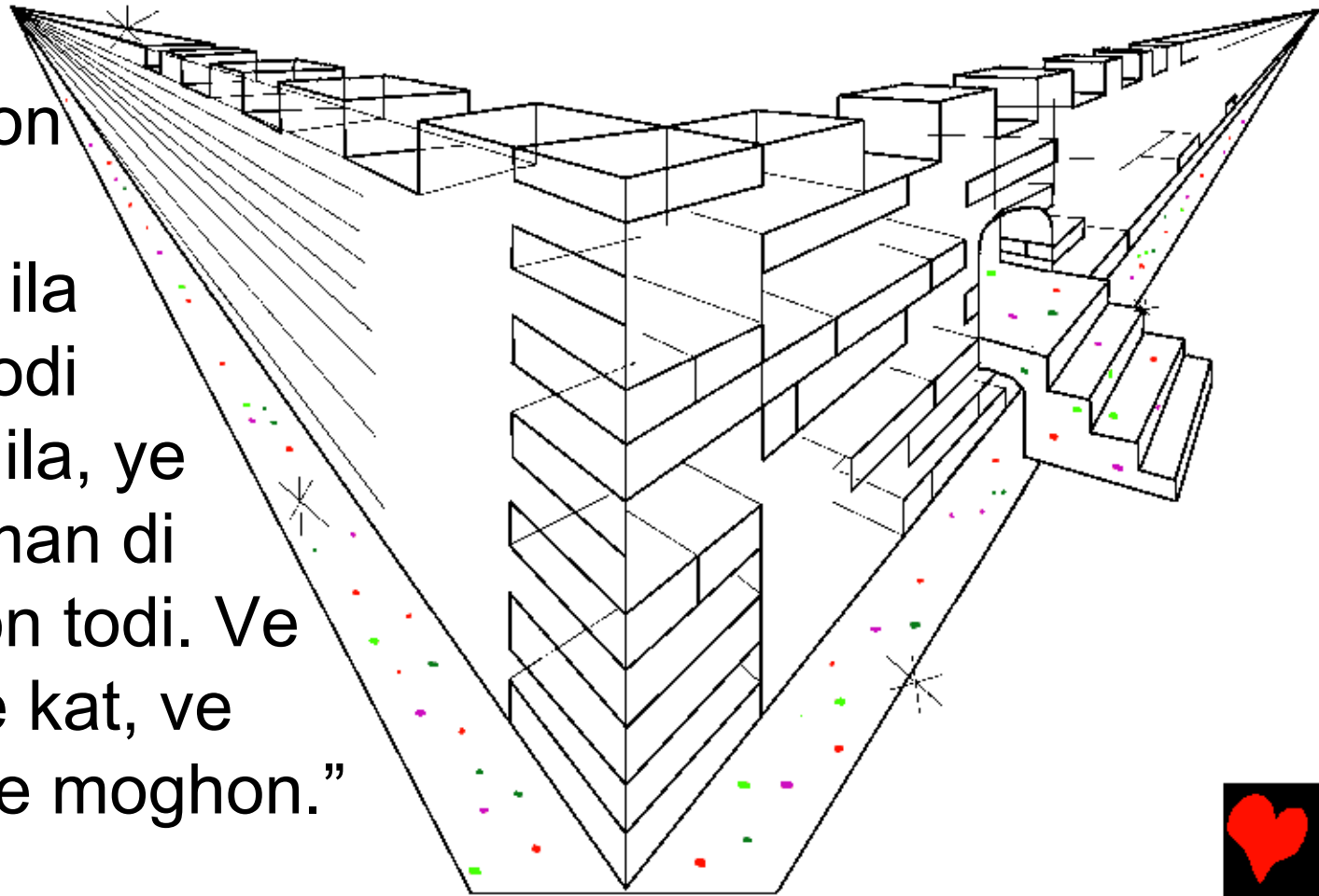


Ghoro naloonj mbeeb naol naol to Maaron ighur di, tisob tipait Maaron toman Sipsip toni izadi. Yes to tineep sambam, yes to tineep izi taan, yes to tineep taan lolo, ve yes to tineep te lolo ne paam. Tisob tilup avodi tighaze: “Ye to ineep ila ina to ghamuunj pooz, toman Sipsip toni, iit irau tapakur di pa tapiridi ve poia todi, ve tapait izadi itaghoni taghoni gha ila!”



Ve naghita ndug patabuan to Maaron. InEEP toni to sambam we ve izi inim. Ndug tonowen, Yerusalem paghu. Ye igharaat tau le paghuna kat, inimale liva to ighaze ila pa vaiuun tamoot to tisia pani. Ghoron naloon bobaan tiina ivot ila Maaron ina to ghamuun pooz ve inim ighaze:

“Aghita. Maaron ighur ina to nepoon ineep ila tamtoghon lolodi wa. Aazne ve ila, ye pale ineep toman di ve inim Maaron todi. Ve yes tinim ye le kat, ve tilup di tinim ee moghon.”



Ghoro anjela tonenen ipatoon ya to nepoon mataad yaryaara payou. Ya tonowen, milmilia ve ingalaan kat inimale galas. Ve ivot ila Maaron yesuru Sipsip toni inadi to ghamuun pooz, ve ireer ivot.



Ndug tonowen le uraat eta pa ndag ma kaiyo muul maau. Pasa, Maaron tau nguruba, tauto isul ndug ve ighami ighazoonj. Ve Sipsip to Maaron to inim lam pani.



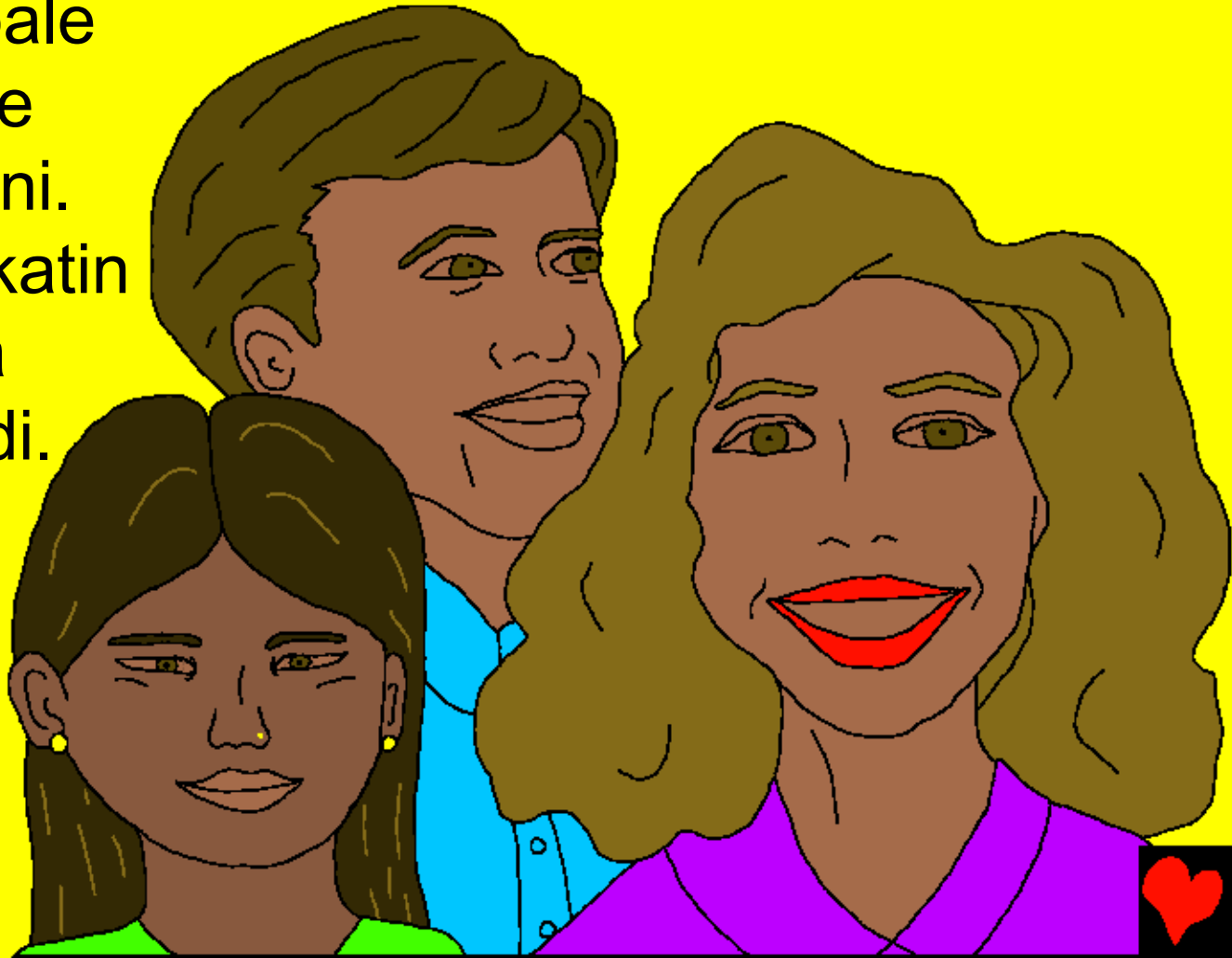
Eemoghon mbeb to tingalaan
maau, eta irau iloonj ila maau.
Ve ighaze tamtoghon eta
ighamgham ngar samsamia,
ma ighamgham kaarom, ye
paam irau iloonj ila maau.
Ndiran to izadi ineep ila
rau to nepoonj mataad
yaryaara to Sipsip to
Maaron ingini, yes
moghon to irau
tiloonj tila ndug tonowen.



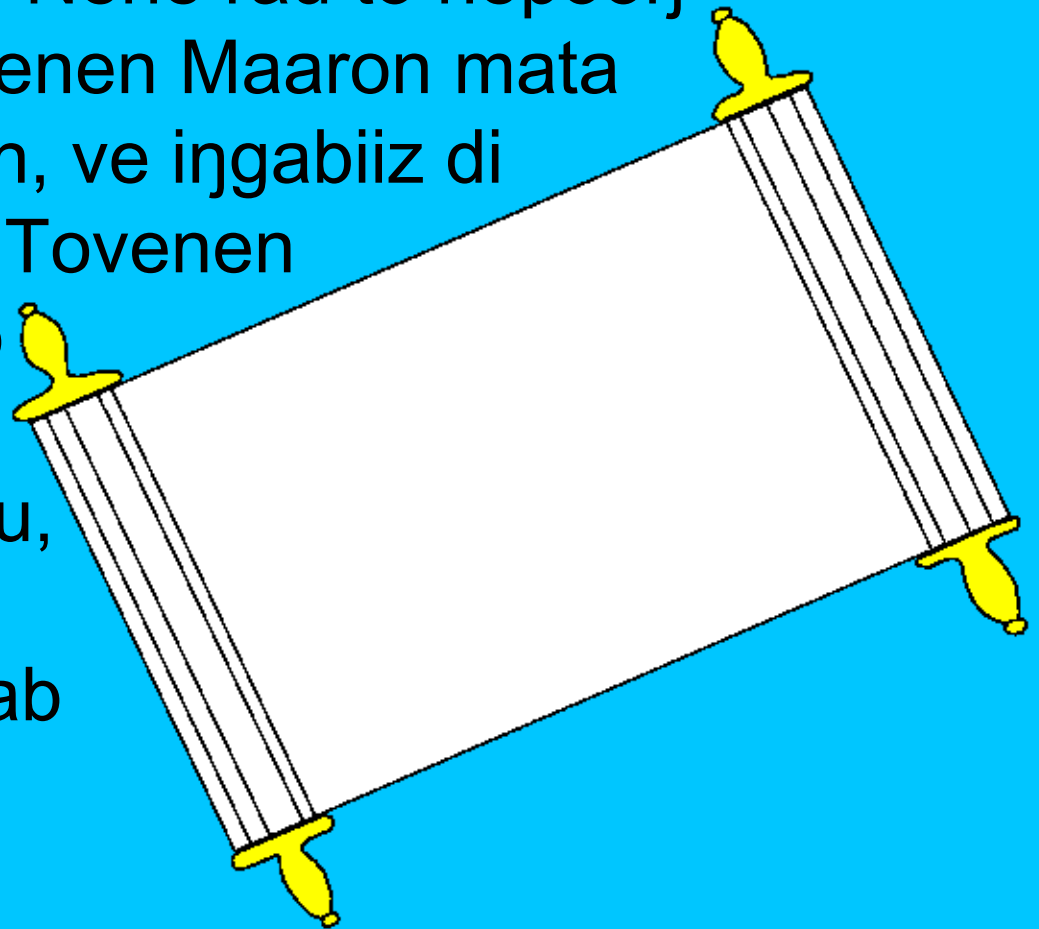
“Ye pale imus matadi suru
isob ilale. Ve mateen, monjiin,
tanjiz, ve yabyabuun irau tivot
muul maau. Pasa, nepoon to
muun isob wa.”



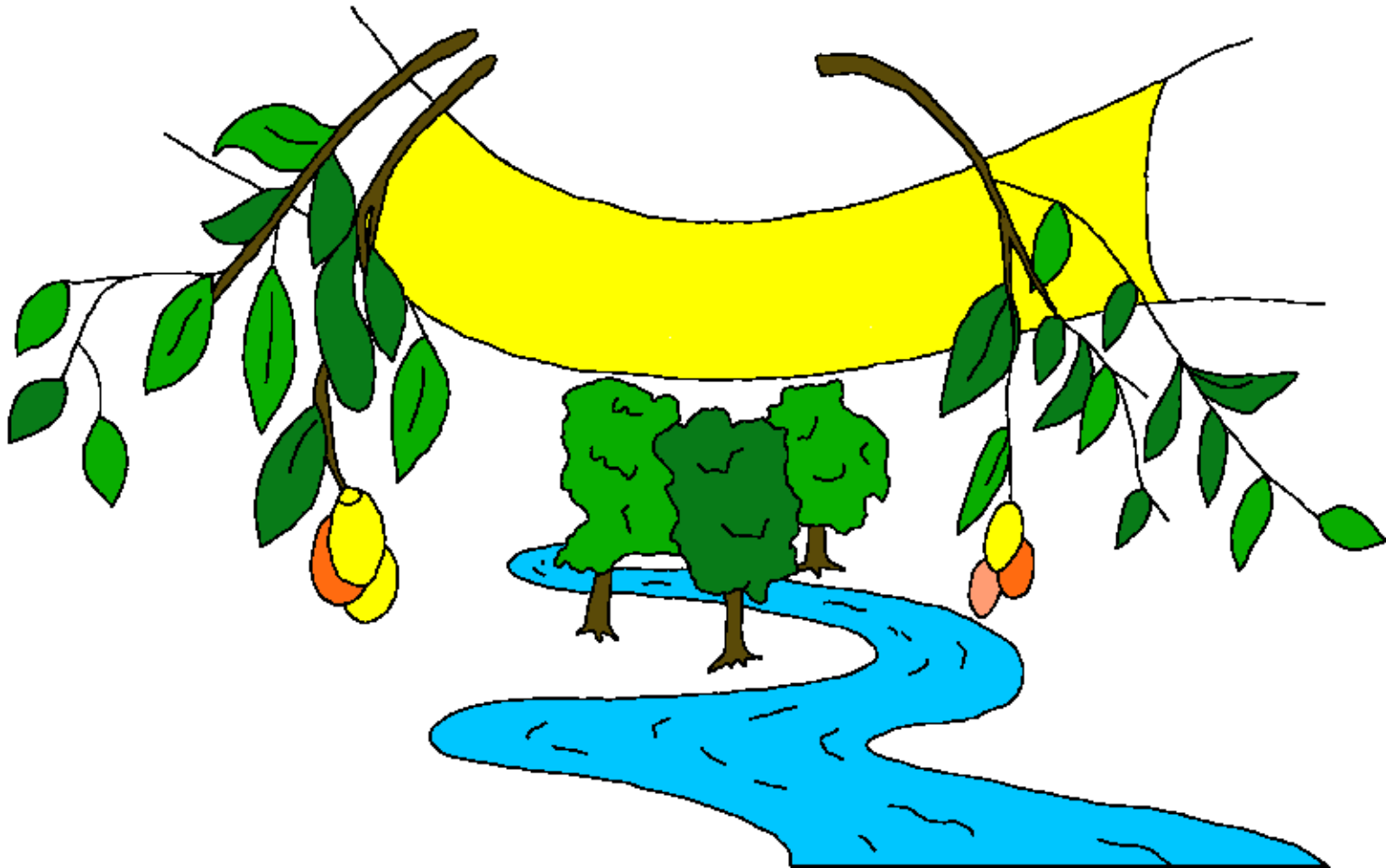
Patanjani naol to muun Maaron ighur di tinjara
tamtohon pa sosor todi, nene tisob wa. Irau tivot muul
maau. Ve Maaron yesuru Sipsip toni inadi to ghamuun
pooz pale iyoon izi ndug tonowen. Ve Maaron
mbesoonja toni pale
tineep tonowe, ve
timbesmbees pani.
Yes pale tighita katin
nagho. Ve ye iza
ineep ila ndamodi.



Ve naghita mateenja tisob tiyoon ila Maaron ina to ghamuunj pooz nagho. Yes to izadi tintina, ve yes to ledi izadi maau ne paam. Ghoru tiraav rau pida. Rau tonowen, ngar naol to tamtoghon tigham di ne, timbood di ila. Ve tiraav rau ite. Nene rau to nepoonj mataad yaryaara. Tovenen Maaron mata itaghon rau ru tonowen, ve ingabiiz di itaghon ngar todi todi. Tovenen sei to ighaze iza ineep ila rau to nepoonj mataad yaryaara maau, nene pale tipiyaava izila saambu tiina to yab ighanghan ila.



Maaron Avuvu yesuru liva to ighaze ivai, tisaav tighaze:
“Unum!” Ve yes to tiloon saveen tonene paam, tisaav
raraate tighaze: “Unum.” Ighaze tamtoghon eta muruni,
ghoro inim ve ighun ya mata yaryaara to le atia maau.



Pasa, Maaron ighur lolo kat pa
tamtoohon to taan. Tauto ipul Natu ee
moghon izi inim taan ve imaat padi.
Leso tamtoohon tisob to tighur ila
toni, tilaledi sob, ve tigham
nepoon poia ila to Maaron,
ve tineep tovene
le alok.



Rom 3:23 Ataam tonene, nene ataam to ghurla.
Tamtoghon tisob to tighur ila to Yesu Krisi, Maaron pale ighita di ighaze tineep denjadi ila mata. Yes Yuda, ve yes to Yuda maau ne paam. Pasa, tamtoghon eta ilib pa ita ite maau. Iit tasob rarateed moghon. Tasob tasosor wa. Pasa, tataghon Maaron gabua ve ngar toni iraua maau. Ngargar ve nepoonj to it, nene ipatoonja ighaze ye iza tiina ne maau.

Rom 6:23 Ngargar samia atia, nene mateenj. Eemoghon iit to taneep tunja ila to Tiina to it Yesu Krisi, Maaron igham poian ghiit, ve igham leed nepoonj poia to pale iseengga itaghooni taghooni gha ila.

Hibru 9:27 Tamtoghon tisob pale timaat pa ee moghon ve isob, itaghoon Maaron ngargar toni. Ve muri, gabizoonj to di pale ivot ve tigham atia to di.



Epesus 2:8,9 Tovenen yam to aghur ila to Krisi, Maaron igham mulin gham itaghon tau lolo ve poia toni. Mbeb tonenen ivot itaghon ngar poia eta to yam aghami ne maau. Maaron igham payam sorok. Tovenen ye igham poian gham itaghon ngar poia eta to yam aghami ne maau. Ye igham payam sorok. Leso tamtoghon eta ipait tau sob.

Rom 10:9,10 Saveen tonowen isaav pait tovene: Ighaze taum avom uvotia ghurla tiom ila ival tiina matadi ughaze: "Yesu, ye Tiina tiou," ve ighaze lolom ighur ila ughaze Maaron ipamundigini pa mateen wa, nene pale Maaron igham mulin ghom, ve uneeppooi. Pasa, ighaze lolood ighur ila, nene pale Krisi igham ghiit taneep denjaad ila Maaron mata. Ve ighaze tauud avood tavotia ghurla toit ila ival tiina matadi, nene pale Maaron igham mulin ghiit ve taneep pooi.



Yoan 3:16,17 “Pasa, Maaron ighur lolo kat pa tamtoghon to taan. Tauto ipul Natu ee moghon izi inim taan ve imaat padi. Leso tamtoghon tisob to tighur ila toni, tilaledi sob, ve tigham nepoon poia ila to Maaron, ve tineep tovene le alok. Onoon kat, Maaron imbaan Natu izi inim taan pa ingabiiz tamtoghon ve ighur atia padi ne maau. Ye imbaanja izi inim pa igham mulin di.

1 Yoan 5:11-13 Saveen tovene: Nepoon poia to isenseennga gha ila, nene Maaron igham pait wa. Nepoon tonowen, taghami ila to Natu. Tovenen tamtoghon to ighaze igham Maaron Natu, ye igham nepoon poia ila to Maaron wa. Ve tamtoghon to ighaze igham Maaron Natu maau, ye igham nepoon tonowen sone. Saveen isob tonene, you nambooda ilat to yam tamtoghon to aghur ila to Maaron Natu, lesa awatag kat aghaze yam agham nepoon poia ila to Maaron wa. Nepoon tonowen pale iseennga itaghoni taghoni gha ila.



Yoan 14; 2 Korin 5; Saveen Yongaan 4, 21, 22

Storyline by: Edward D. Hughes

Illustrated by: Lazarus
and Alastair Paterson

Adapted by: Sarah S.

Mutu, Oov NT (tuc) © 2011, Wycliffe Bible Translators, Inc.
All rights reserved.

<https://www.bible.com/bible/473/MAT.1>

©2025 Bible for Children, Inc.

www.M1914.org

www.bibleforchildren.org

