

www.BibleForChildren.org



Genesis 6

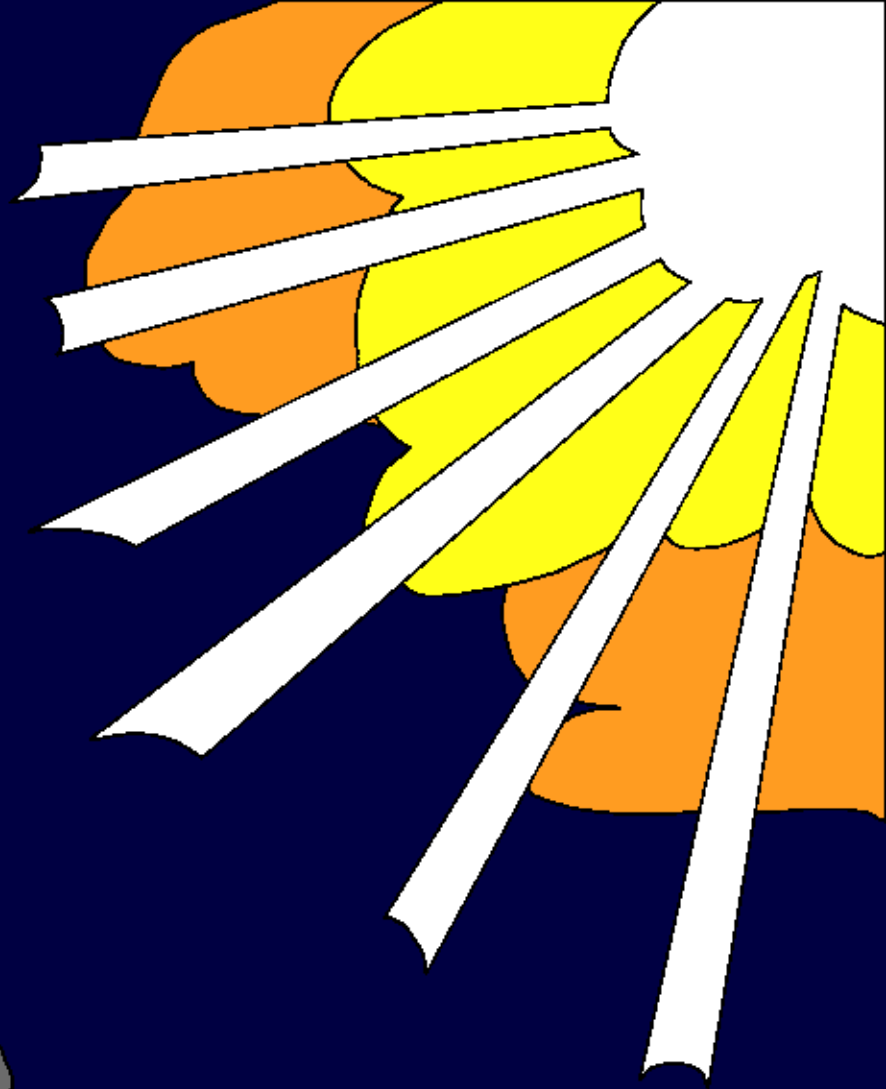


Iye ara titiye ta Nowah pe norun
hu. Noru Nowah hu matimou
kamai, ngalahu ara iye: Sem,
Ham, pe Yapet. Pwen Nowah
ara ndramat hamou imwonen iya
kili hu ndramat masih
tandrohongan ara.

Hu ndramat konoho
yirowe mwomwan ta
Nowah pwi.



Pe Nowah irotokai iyasura
Ngindrai lang masih. Pe
Ngindrai inimnim isa kol pwan
pe inime kultuw tahu ndramat
masih kene para kol pwan
masih ara mwomwan opu.



Pwen Ngindrai ipwai iya kili Nowah ipa,
“Yo andre kupwasili topwe hu ndramat
masih kiyasura kol pwan i, paratesah,
kol pwan ipep iya tahatai pe kultuw
mwomwan tahu ko.”



“Kiya, Nowah, asah pe aselehe hakou ndroyem kiya kei pwokeyan pe ndrison. Arandrihi nondriyan, pe awiri nalit pe apene nondriyan pe ngawan kene.”



“Ambusi ndrohonga ndroi
ara tehe toro: andrtingui
pe yimingah ara niwen,
pe mulai para aliy
ara songui
pe lungah

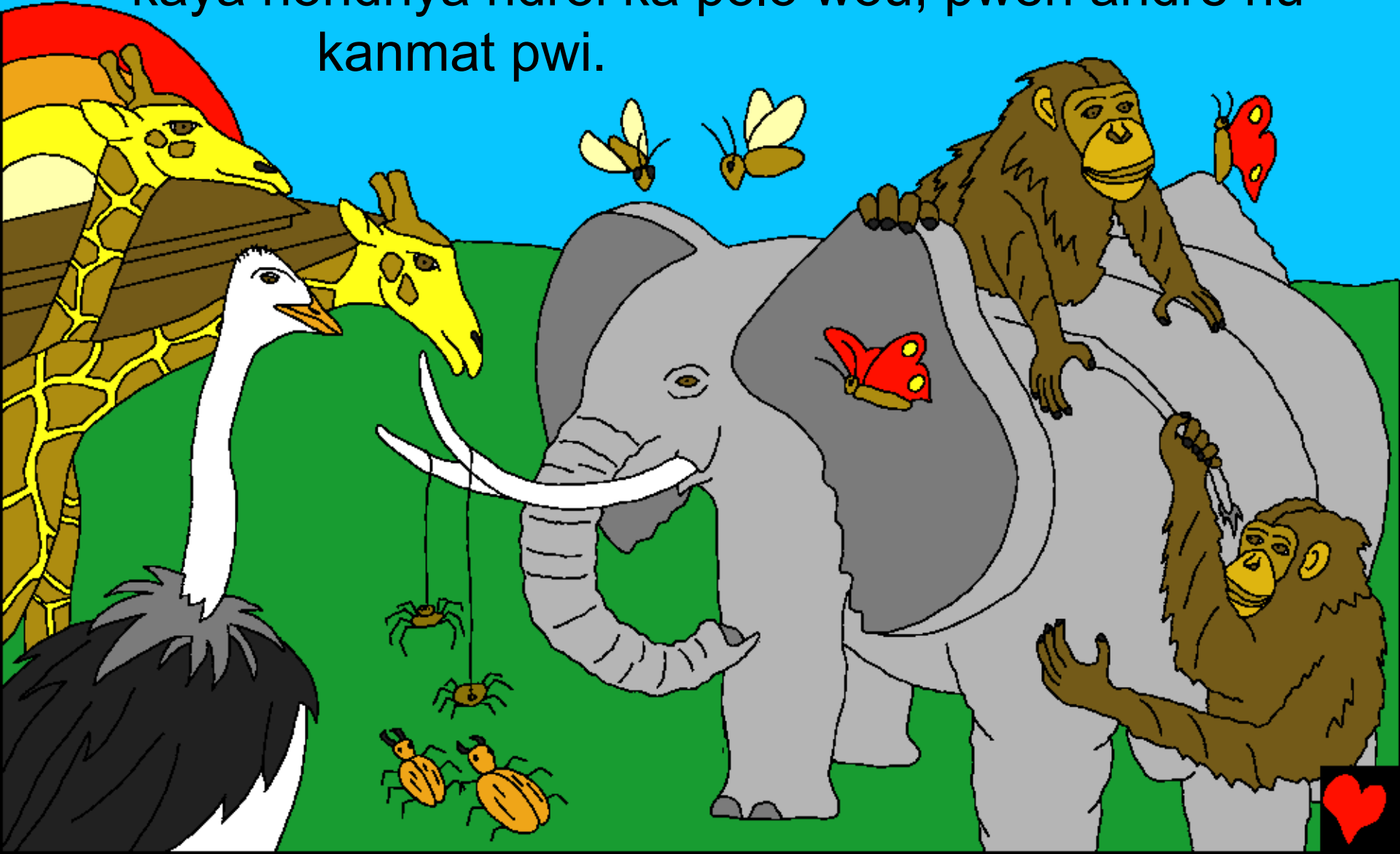
pe haroh.
Pe niwen para
mbulu ndroi iro
pwan pe iya
paingan ara
andrtingah pe haroh.”



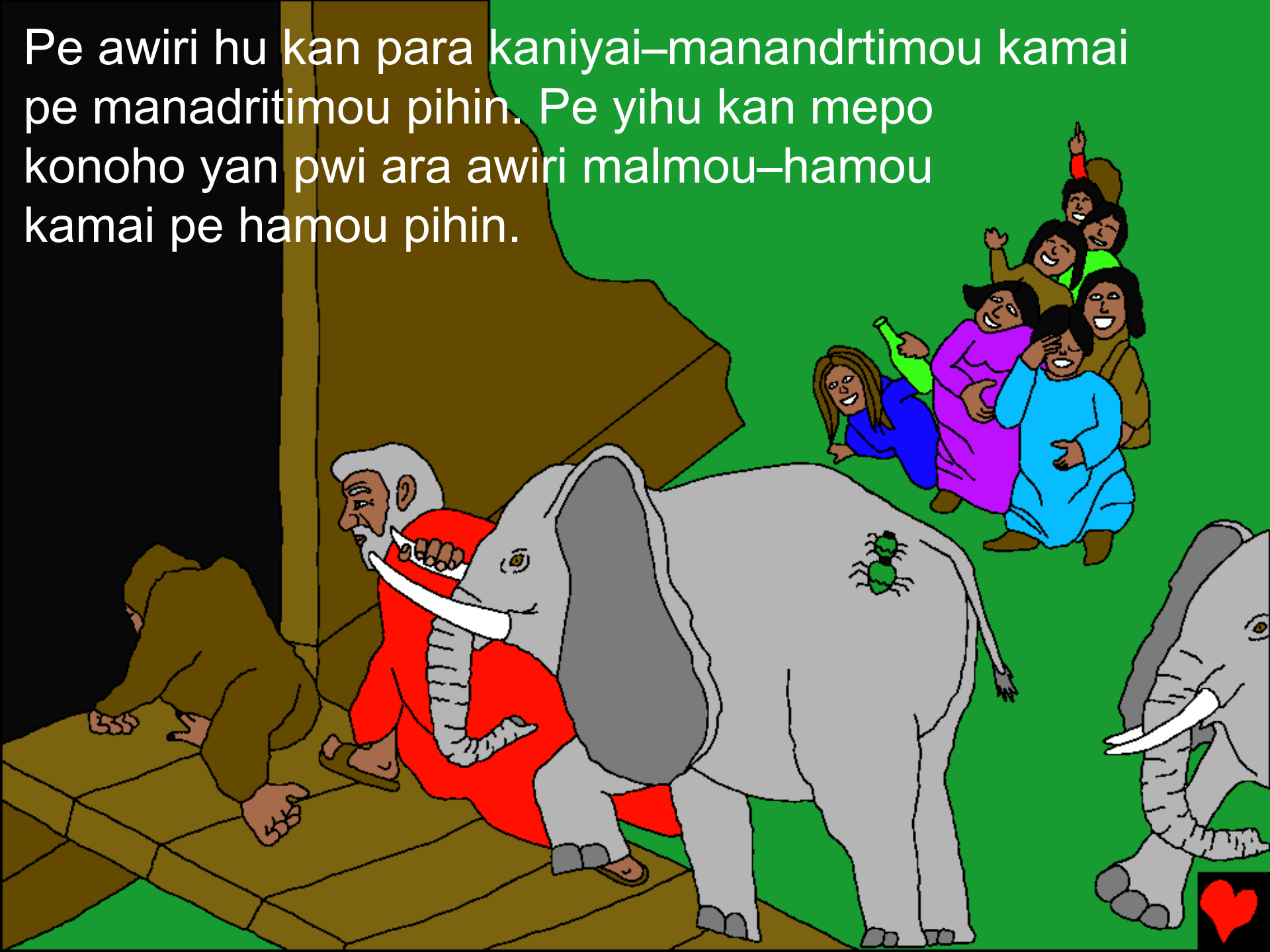
“Awiri anandrinai masih
para kaniyai handra-handra
ana wawu pe anahu kan i,
pe aikiy kiya kaisowa
anandrinai.”



Pe awiri hu kan hamou handra-hamou handra
makunuwehu-hamou kamai pe hamou pihin-awiri hu
kaya nondriya ndroi ka polo wou, pwen andre hu
kanmat pwi.



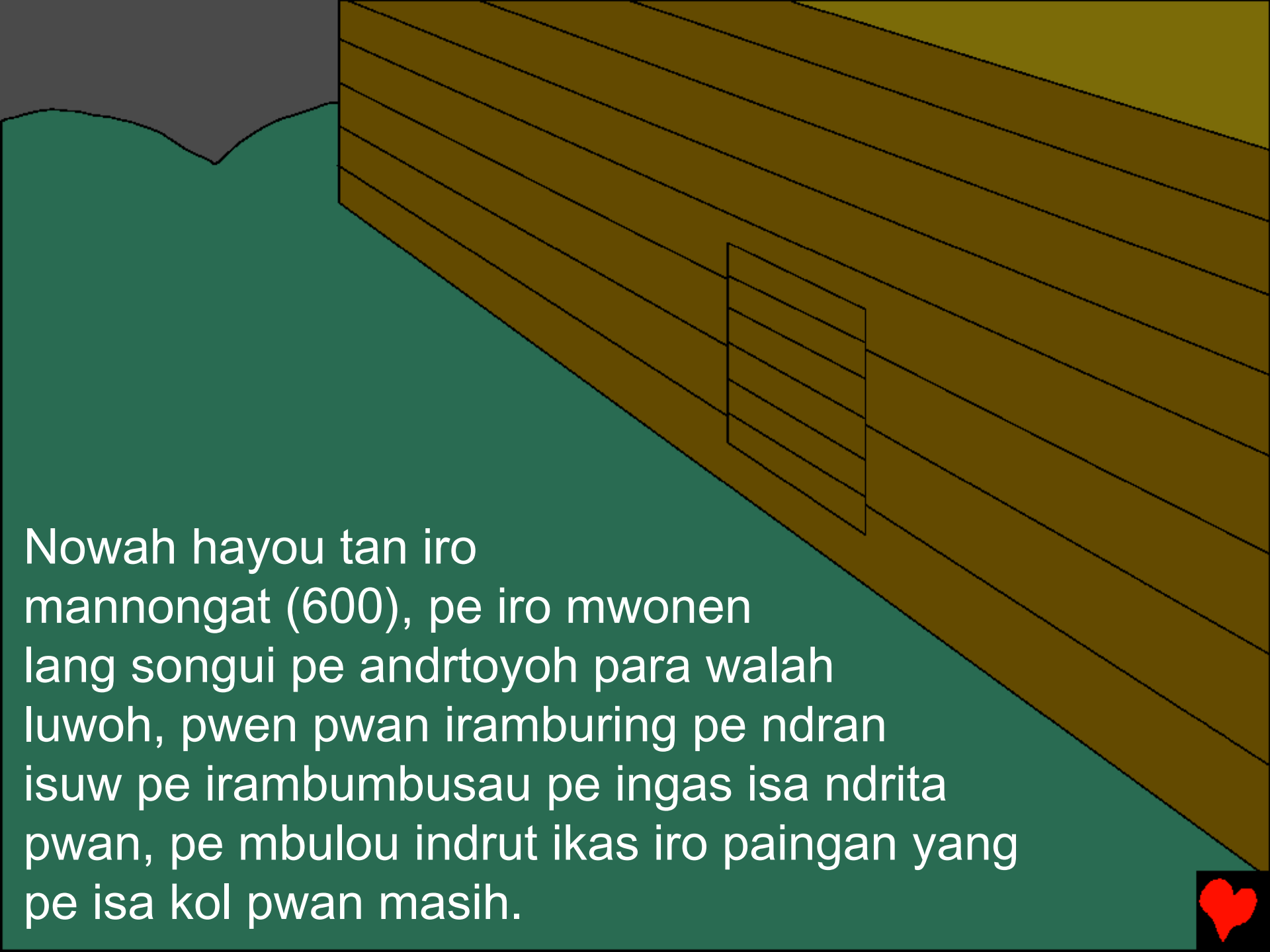
Pe awiri hu kan para kaniyai–manandrtimou kamai
pe manadritimou pihin. Pe yihu kan mepo
konoho yan pwi ara awiri malmou–hamou
kamai pe hamou pihin.





Nowah iyapolo
nambuyun, norun hu pe
mbuyu ngundran hu, yihu
masih kene huya nondriya ndroi,
paratesah, non pakeh nakirah.





Nowah hayou tan iro
mannongat (600), pe iro mwonen
lang songui pe andrtoyoh para walah
luwoh, pwen pwan iramburing pe ndran
isuw pe irambumbusau pe ingas isa ndrita
pwan, pe mbulou indrut ikas iro paingan yang
pe isa kol pwan masih.





Mbulou irondrut, irondrut, irondrut ipoo
lang mahaangui pe ping mahaangui.



Non irah iya namandran iya iro
kol pwan, pe ndroi ara iho raipit
ndrita non.

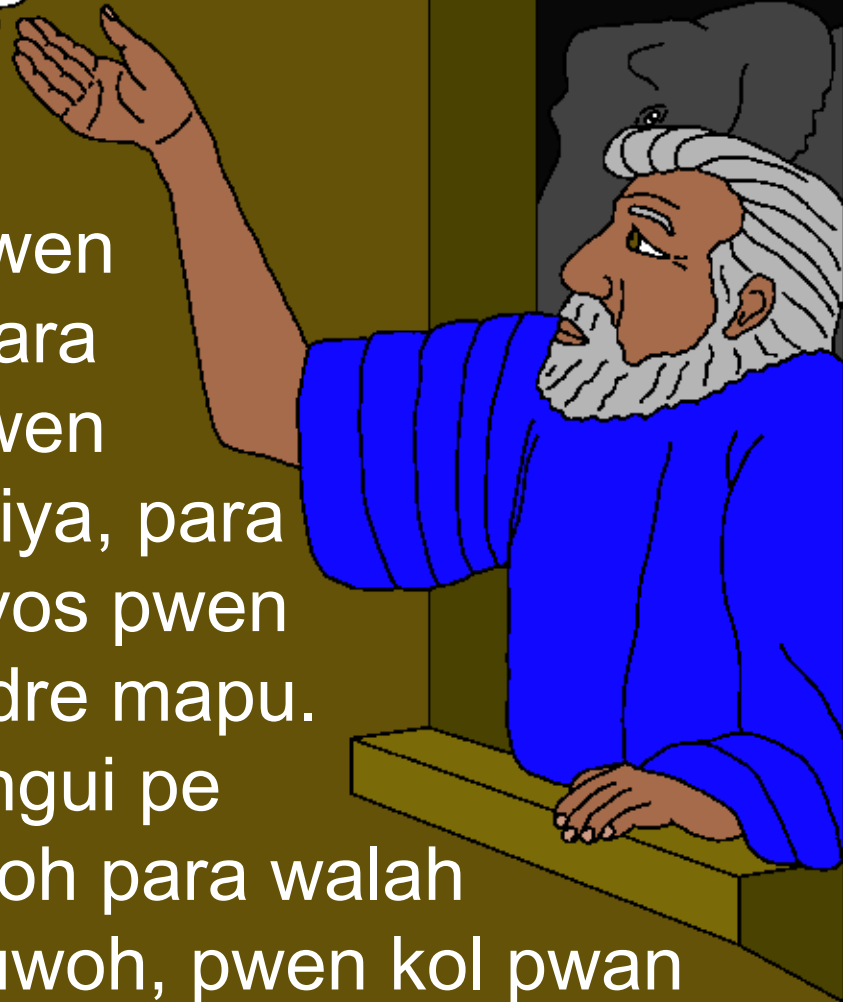


Non ingas iya paingan masih, pe iramburihi hu
ngondron namandran masih kene para kol pwan. Melit
masih tora hiringoha hu iyau ngara ndrohonguhu ara hu
mat topwei.



Hapeko Ngindrai ara ilohongani Nowah
iyasura hu kan pe hu melit masih
makunuwehu huropolo yiy nondriya
ndroi. Pwen Ngindrai imbusi nohai
imayum, pe ndras pe non iro tayos
iya pwan.





Iyamulan para lang
mahaangui ihipwen, pwen
Nowah itipe marasip para
ndroi nepo imbusiy. Pwen
ipwandrisa pai hamou iya, para
kinimei tehe non kintayos pwen
kinna ndrita pwan ndre mapu.

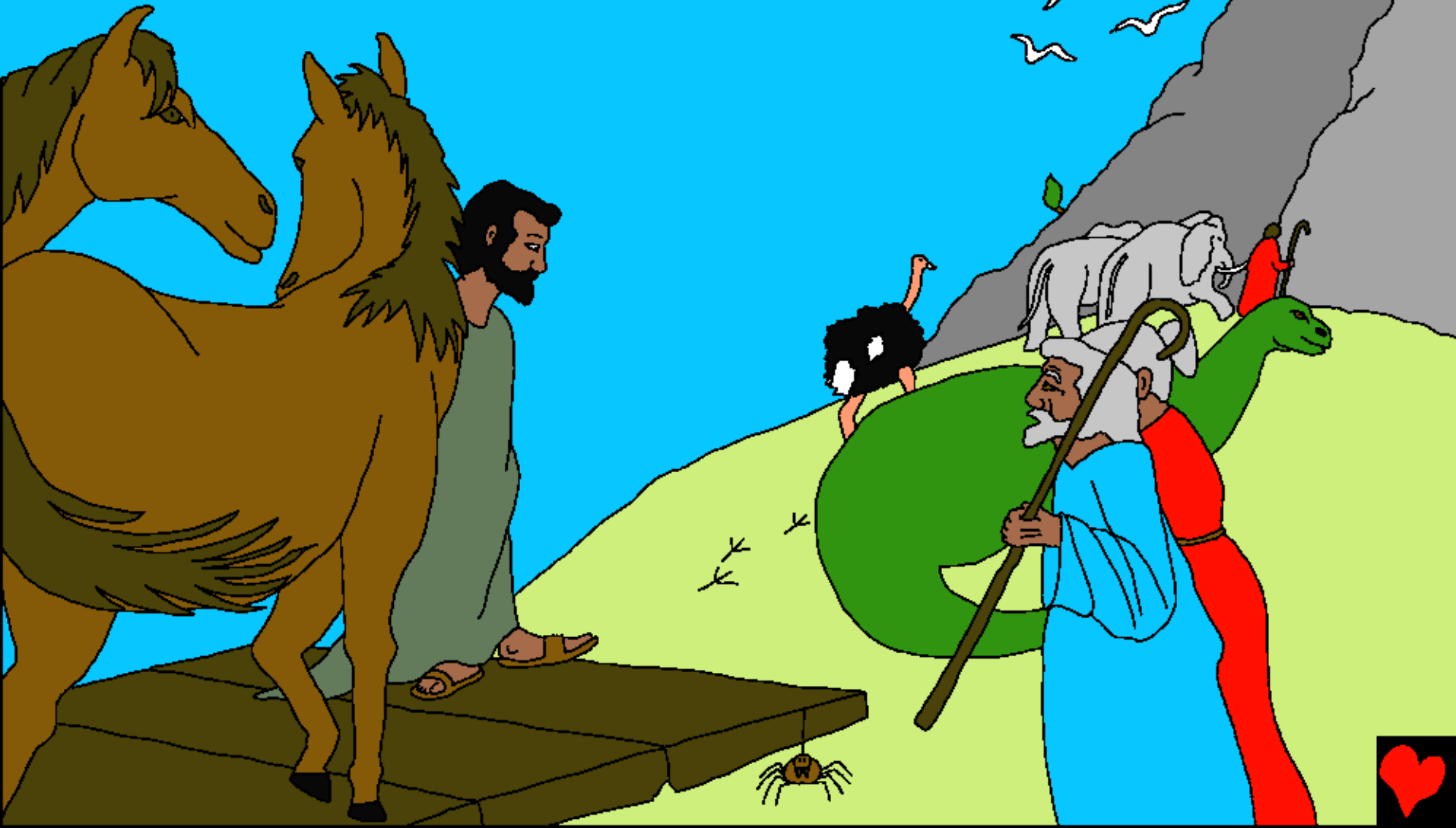
Pe iro lang lungui pe
andrtoyoh para walah
luwoh, pwen kol pwan
ara kinpwasau topwei.



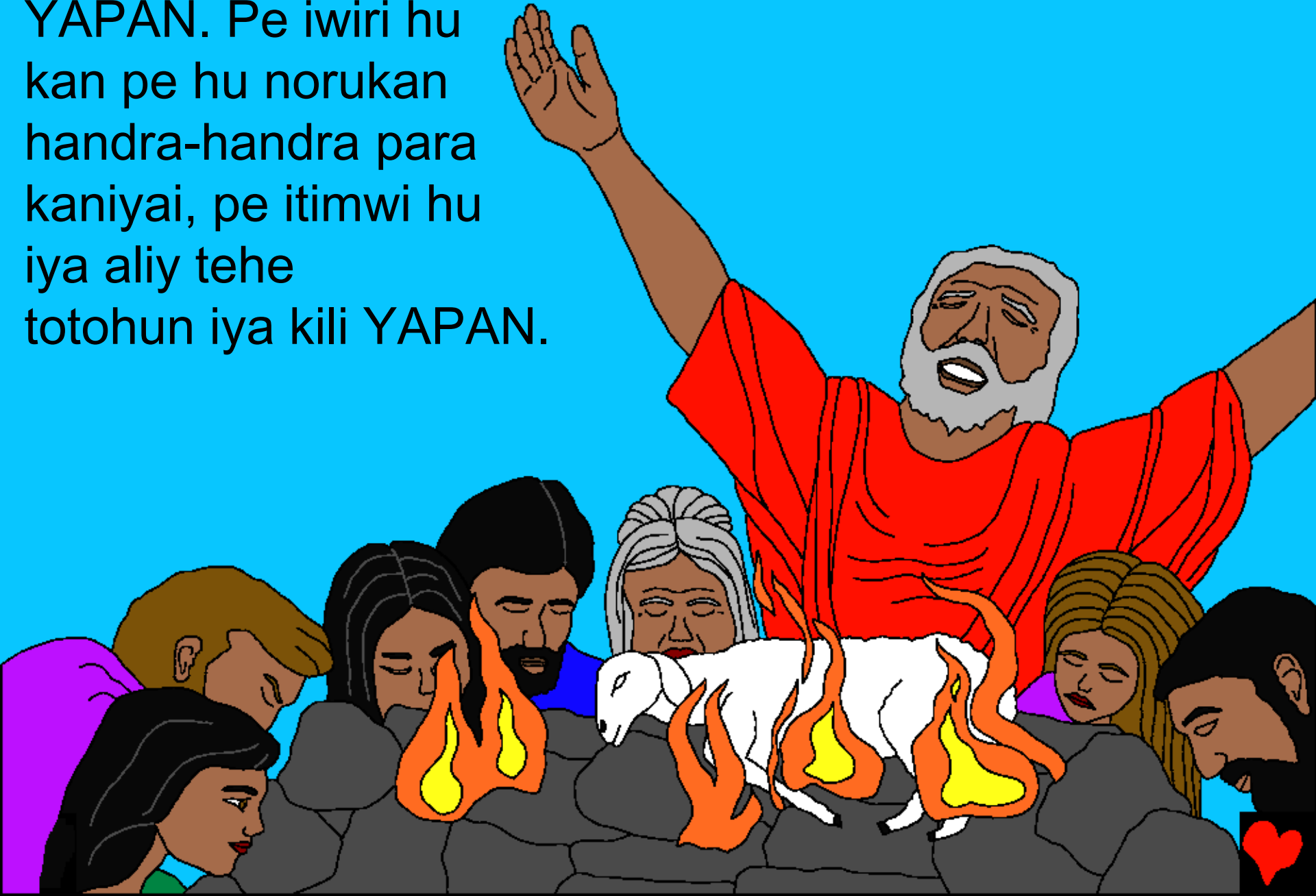
Pe Ngindrai ipwai iya kili Nowah ipa, “Akasa ngawan–wou pe nambuyum, norum hu pe mbuyu norum hu. Pwen Nowah isoye pere tuntun para yukyuk iya kili YAPAN.”

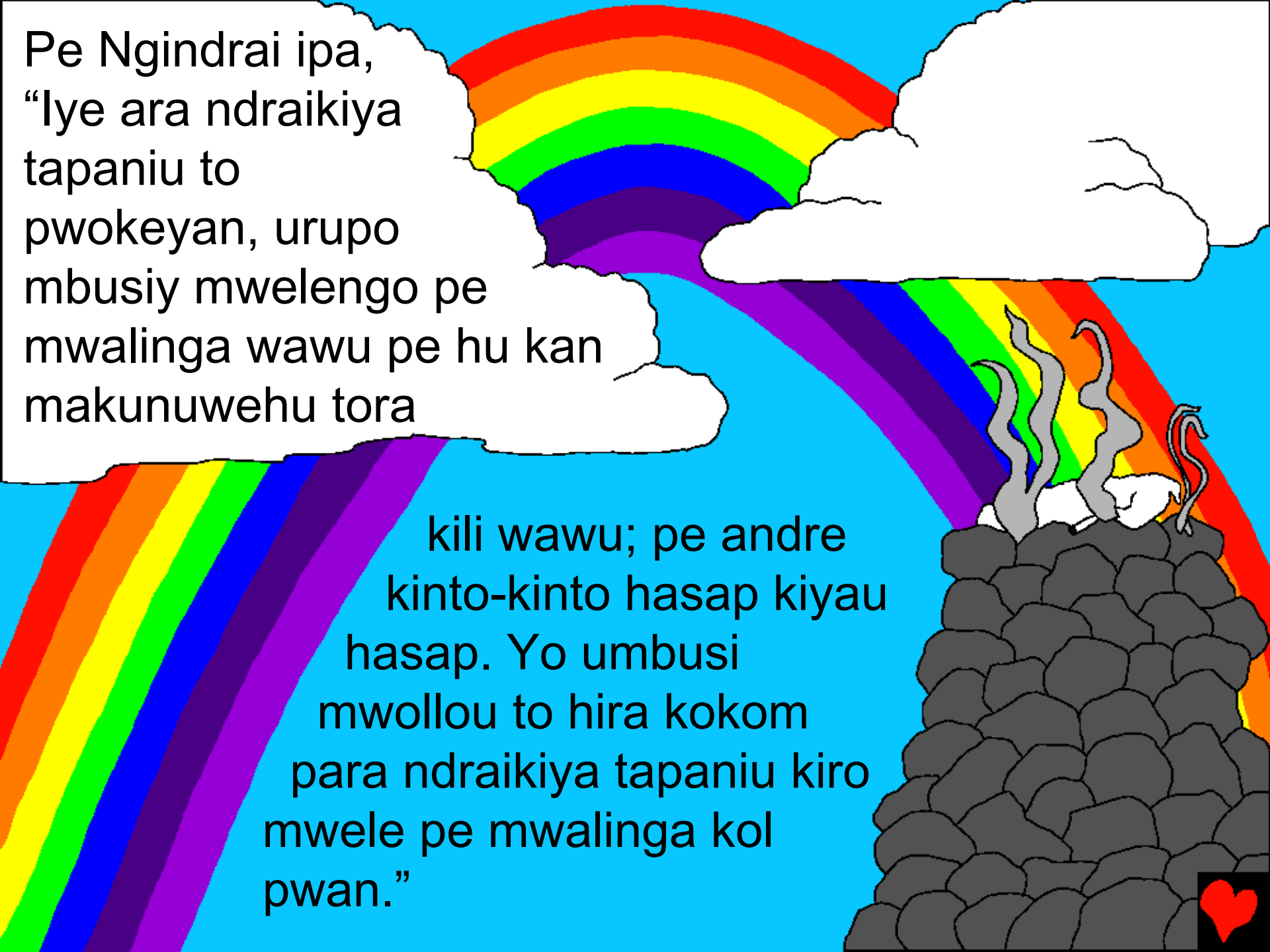


Pe iwiri hu kan pe hu norukan handra-handra para kaniyai, pe itimwi hu iya aliy tehe totohun iya kili YAPAN.



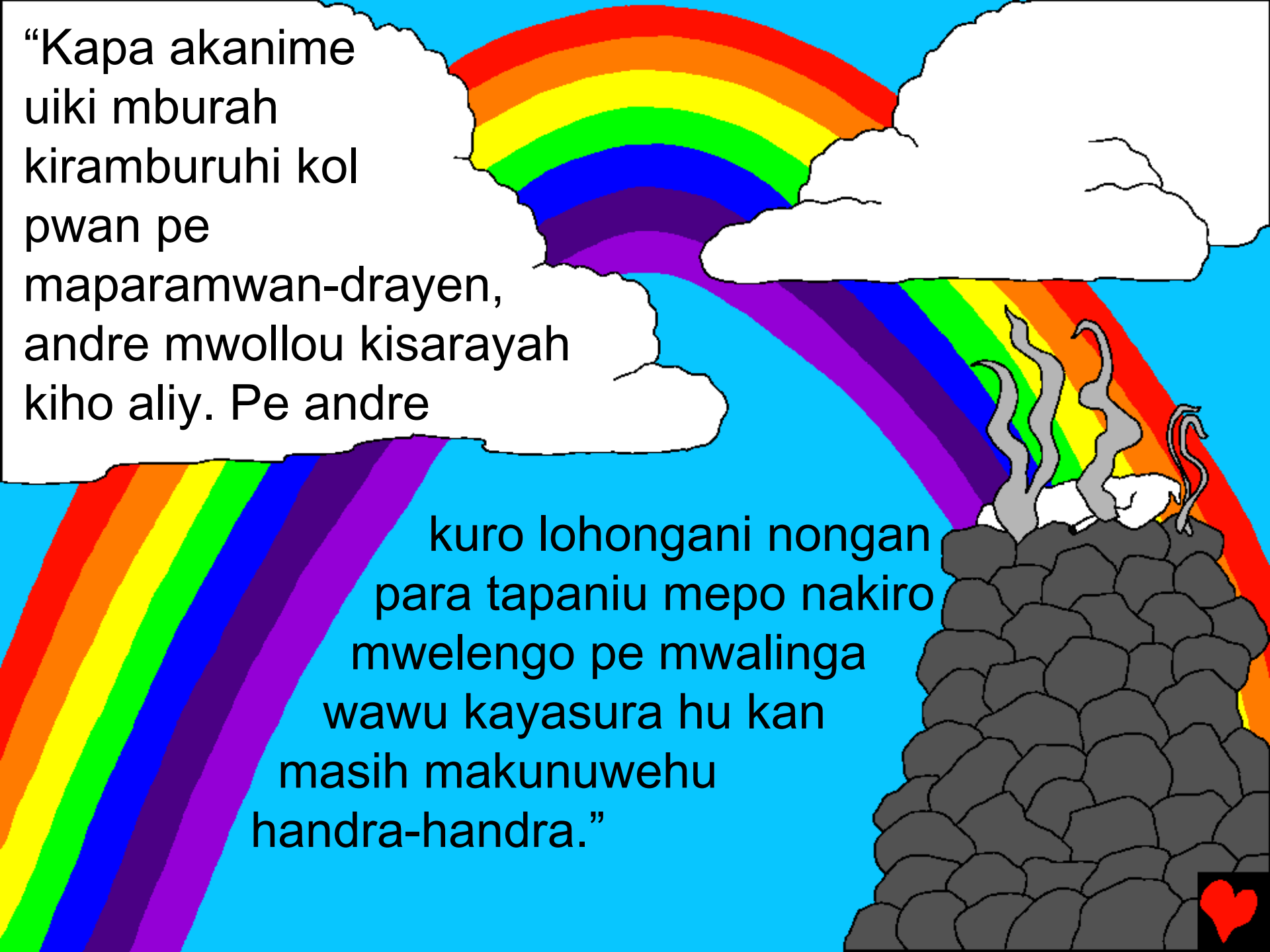
Pwen Nowah isoye pere tuntun para yukyuk iya kili YAPAN. Pe iwiri hu kan pe hu norukan handra-handra para kaniyai, pe itimwi hu iya aliy tehe totohun iya kili YAPAN.





Pe Ngindrai ipa,
“Iye ara ndraikiya
tapaniu to
pwokeyan, urupo
mbusiy mwelengo pe
mwalinga wawu pe hu kan
makunuwehu tora


kili wawu; pe andre
kinto-kinto hasap kiyau
hasap. Yo umbusi
mwollou to hira kokom
para ndraikiya tapaniu kiro
mwele pe mwalinga kol
pwan.”

A cartoon illustration featuring a vibrant rainbow arching across a bright blue sky. The rainbow's colors are red, orange, yellow, green, blue, and purple. In the background, there are white, fluffy clouds. On the right side, a dark grey volcano is shown with a dragon breathing fire. The dragon is white with grey horns and is breathing a stream of grey fire that is partially obscured by the rainbow's colors. The overall scene is bright and colorful.

“Kapa akanime
uiki mburah
kiramburuhi kol
pwan pe
maparamwan-drayen,
andre mwollou kisarayah
kiho aliy. Pe andre

kuro lohongani nongan
para tapaniu mepo nakiro
mwelengo pe mwalinga
wawu kayasura hu kan
masih makunuwehu
handra-handra.”





“Yo upwatisingi
nongno tehe non andre
kinrah paiwe para
kipwasili topwe hu melit
masih kene ara pwi.”



Ngindrai itoholi Nowah
iyasura norun hu pe ipwai iyatahu
ipa, “Akapo noru wawu; akahon
pe ndromweya wawu kaya soyo
soyon pe akapep kol
pwan masih.”



Pe ngala noru Nowah
hu huro nondriya ndroi pe husa
pwan ara iye: Sem, Ham, pe Yapet.
(Ham ara tama Kenaan.) Yihu noru
Nowah matimou ara husarayah
tumbuho ndramat masih
pe hu silihi kol pwan
masih kene.



Genesis 6 – 10

Storyline by: Edward D. Hughes

Illustrated by: Byron Unger, Lazarus,
and Alastair Paterson

Adapted by: M. Maillot, Tammy S.

Nali Portions (nss) © 2012, Wycliffe Bible Translators, Inc.
All rights reserved.

<https://www.bible.com/bible/1453/MAT.1>

©2026 Bible for Children, Inc.

www.M1914.org

www.bibleforchildren.org

