

www.BibleForChildren.org



Gyn 14



Nu Yesu tɔwe mu abulapu mu ye, “Fan man yegbe fane nkɔɔ ɛ nmaa fane. Fan kɔɔle lbwaare gyii ke fan kɔɔle ngbaa me gyii. Ibu damante ɛ bu Me-Se kɔkpaara su. Nu ɛ daa ɛ man gye kanɔn nɔn, naafɔɔ n tɔwe fane.”



“N kpee n naa loṅo okyɔnakpa sa fanε. Nu n kan kpee naa loṅo okyɔnakpa sa fanε mu, n biti n bwii ba taa fanε kpee me ase, ke fan naa kyina katin mu nu n te mu.”



Με, Gyɔn mu nu n gye faɛ birisa, lu Yesu su mu n gyii awurufɔ fɛɛ kanan mu nu fen gyii mu, lu an maa gye mu kuwura-gyii mu to asa sumu.

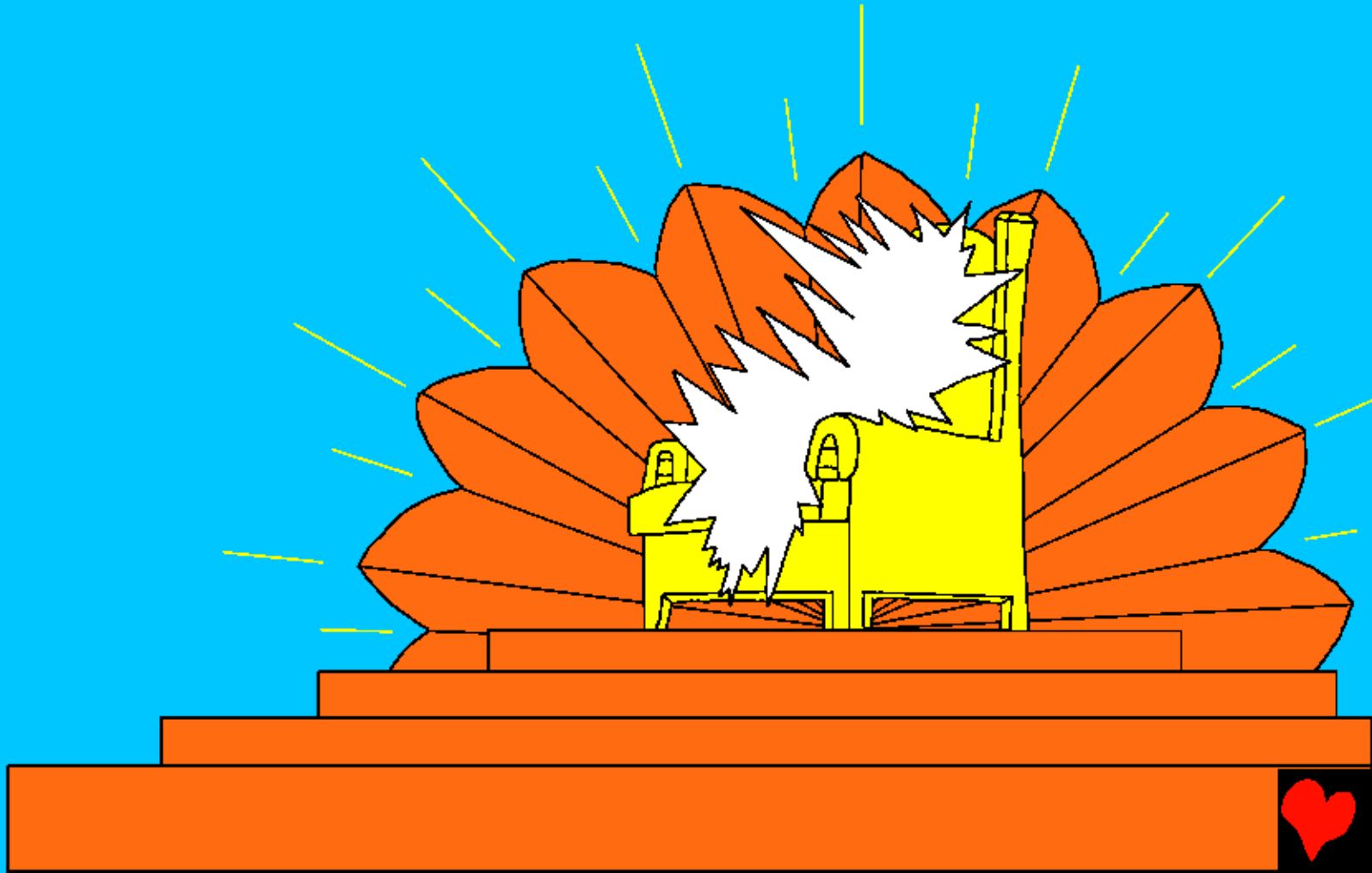
Amaa an nye kenyiita yile to. Lu lbwaare asin kitowe ye Yesu asin



kiɛɛ towe su mu, ba kitaɛ me naa tuu Patimose kifintin mu su.



Opula tɔ nu lbwaare Kayaayu mu taa me. Nu n ba ku mu, n wu kuwura-gya mu ki maa bu susu lbwaare aye yegge oku te kumu su.

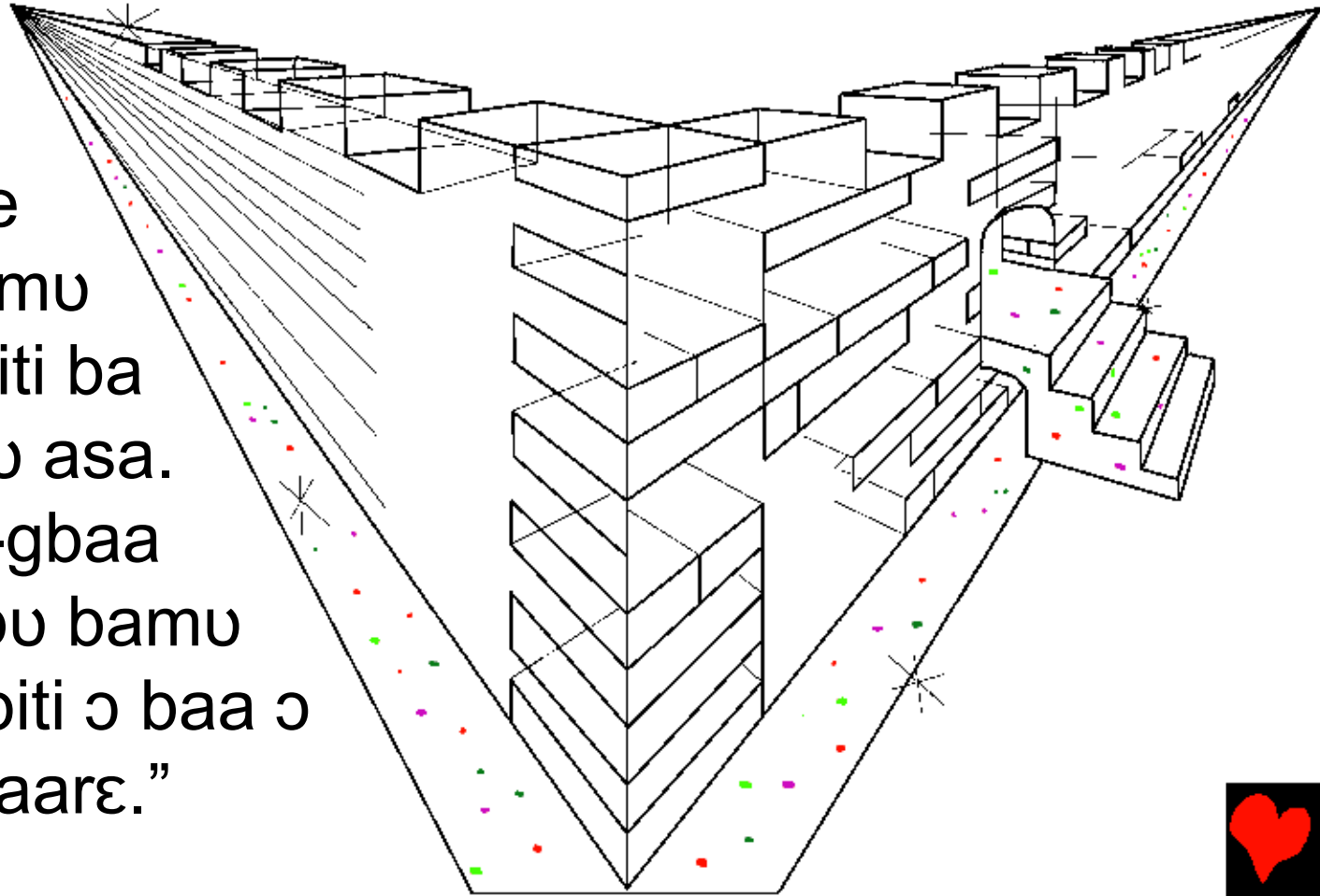


Tuto nu n nu ato tusa kpini mu nu ba bu susu ye kase
su ye kase to ye opu to, ye bamu nu ba bu imu kpini to
bee bu ye, "Ayin-bi ye beere ye
bunya ye olun, i gye sa omu nu
o te kuwura-gya mu su,
ye Kaburu mu kakpa."



Nu n wu Kadε Kyrekyre mu nu ki gye Gyerusalem
rupwe mu, ki maa kpilge ki lu lbwaare ase susu ku ba
kase. Nu lbwaare lɔɔ kumu yula fεε ɔkyufo maa lɔɔ mu
n-yu nu ɔ burɔn ɔ gyoo mu-kuli mu. Nu n nu ɔbule ku
maa kuusi εε tɔwe lu kuwura-gya mu su ye, “Nbunbu

bre, lbwaare
ɔkyinakpa bu
asa ase, nu ee
biti ɔ kyina bamu
ase. Nu bee biti ba
baa ba gye mu asa.
lbwaare gbaa-gbaa
ii biti ɔ baa ɔ bu bamu
ase, nu mu ii biti ɔ baa ɔ
gye bamu lbwaare.”



Tuto nu lbwaare kaboo mu kaapu me obun mu nu kimu
nkyu i sa nkpa, nu u halige fee kilase mu. Nu i lu i kyun
lbwaare maa mu Kabulupu mu kuwura-gya mu kase.



Νυ ι man tiri φεε kyowe abee obwaayi o lu kade lala mu
su, lu φεε lbwaare bunyaa mu u ηαιγε kumu su. Ny
Kabuluru mu ι gyε kumu fitila.



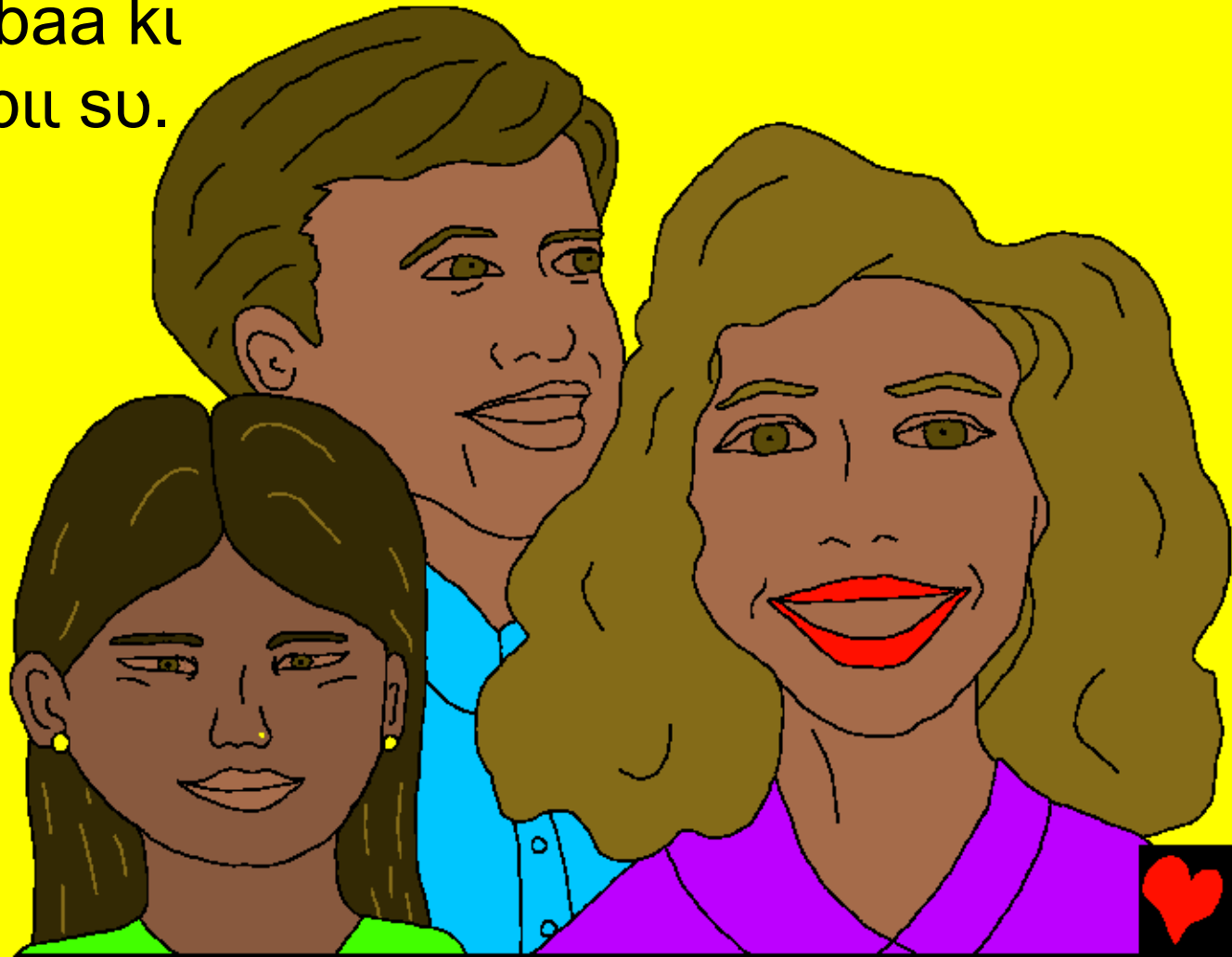
Amaa ineesi ato aku
abεε okumaa mu nu εε
waa ipeeli-sun abεε εε
tin atijεsa, mεε ye o
nye loo tuto. Amoo
bamu nu ba kyuroo
bamu atu waa
Kabulupu mu nkpa
owule mu to nkun ii biti
ba nye loo tuto.



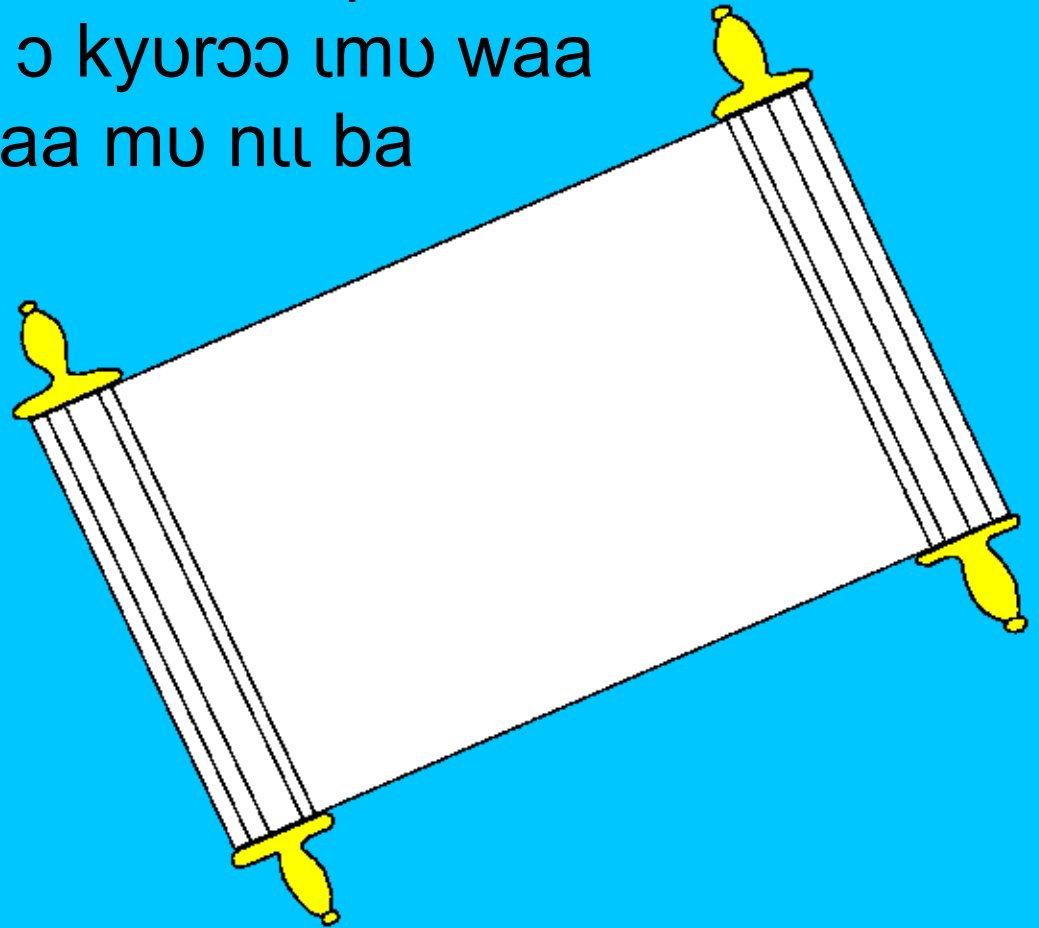
“Mu ii biti ɔ kpaye bamu ansikyu
kpini lu bamu ansi su. Nu lewu
mee ye ɔ baa ɔ bu to, abee
kiboota to abee kusu abee
kayɔ-kɔ ɪ mee ye ɪ baa ɪ bu to,
lu fee ato didaa mu kpini ɪ kyun.”



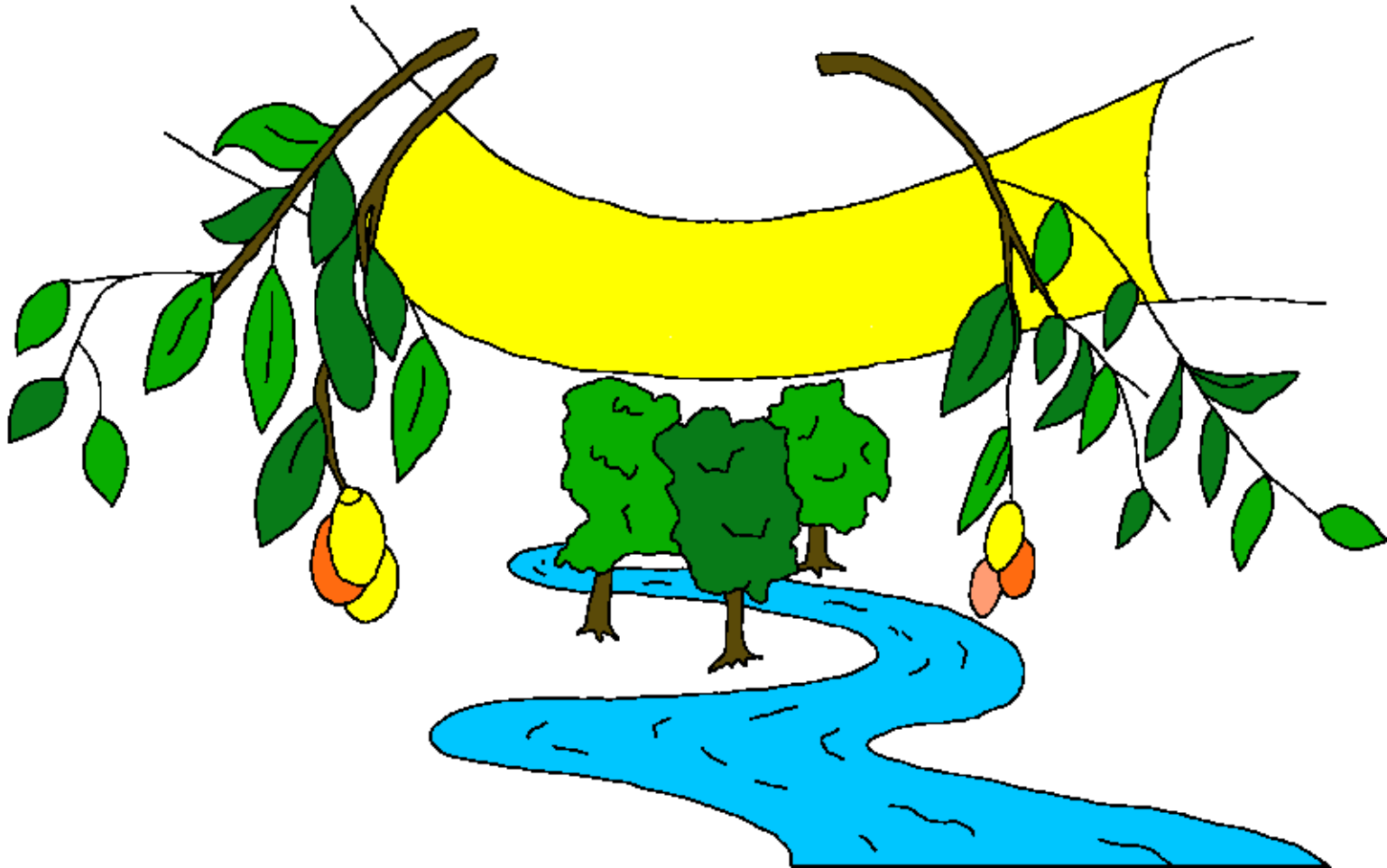
Nu kuto kumaa mu nu lbwaare towe kumu nno mu, man
bula ye ki baa ki bu kade lala mana to. Amaa lbwaare
maa mu Kabulupu mu kuwura-gya mu ii biti i baa i bu
tuto, ke mu ayaafole ba sun mu. Bee biti ba wu mu ansi
to, ke mu kitu ki baa ki
gyan bamu asikpu su.



Nu n wu alewupu mu nu ba gye asa kpare ye asansa,
ba maa yile kuwura-gya mu ansi to. Nu ba bugi iwule
mu nu lbwaare kyurɔɔ okumaa numu awaasa waa to
mu. Nu ba bila bugi owule pupwe ku mu nu ki gye nkpa
owule mu. Nu lbwaare tale alewupu mu, taa bola lu
kuto mu nu ba waa nu o kyurɔɔ imu waa
iwule mu to mu. Okumaa mu nu ba
man kyurɔɔ mu kitu
waa nkpa owule
mu to mu, ba tuu
mu waa fulon
yen-yen mu to.



Nu lbwaare Kayaayu mu maa Okyufo mu ba ye, “Ba!”
Nu okumaa mu nu ee nu fale asin nimu gbaa i towe ye,
“Ba!” Okumaa mu nu bulfo u mo mu mu, o ba.
Nu okumaa mu nu ee biti mu, o ba kooe nkpa nkyu mu,
o mee ye o ka sɛhn.



Lu kanan mu nu lbwaare su kebiti sa
dulinyaa to asa gaa su mu, o
lee me, Mu-Bii kulun kpen mu sa, fee
okuma mu nu o koolo me gyii mu,
mee ye o foyi, amaa ee bitii o
nye nkpa kakpaa.



Rom 3:23 Lu fεε okumaa nιmu waa alibi nu o pan lbwaare bunyaa mu.

Rom 6:23 Nu alibi kukoka ι gyε lewu, amaa lbwaare kakεε mu nu o bola anε-Nyιrιpe Yesu Krisito su sa anε ι gyε nkpa kakpaa.

Hib 9:27 Fεε kanan mu nu ι δε sa daadimaadi kumaa nιmu γε o wu kilu kulun, ke mu lewu kamaa mu, lbwaare o gyii mu asin.

Efe 2:8,9 Lu fεε lbwaare kabwaala mu su nu o mολιγε fane kpali fane kikoolε-gyii su, nu ι man gyε fane gbaa-gbaa fane awaasa su, ι gyε lbwaare kakεε nin. Nu ι man gyε oku kusun sunsa su nu o nye kamολιγε, ke oku o man nye kaapu mu n-yu.



Rom 10:9,10 Nu fu kan taa fu kɔnɔ lɛɛ tɔwɛ yɛ, Yesu i gyɛ
Ɔnyirɛ mu, nu fu kɔɔlɛ gyii fu kɔkɔlɔ tɔ yɛ lbwaarɛ kyini
mu lu lewu tɔ mu, fii biti fu nyɛ kamɔlɛɛ. Lu fɛɛ kɔkɔlɔ tɔ nu
nyimisa i kɔɔlɛ eɛ gyii, nu lbwaarɛ kɔɔlɛ mu fɛɛ mu ikpa i
kyiigi. Nu ɔ kan lɛɛ kɔnɔ tɔwɛ yɛ Yesu i gyɛ Ɔnyirɛ mu, eɛ
biti ɔ nyɛ kamɔlɛɛ.

Gyn 3:16,17 “Lu kanaan mu nu lbwaarɛ su kebiti sa dulinyaa
tɔ asa gaa su mu, ɔ lɛɛ mɛ, Mu-Bii kulun kpen mu sa, fɛɛ
ɔkumaa mu nu ɔ kɔɔlɛ mɛ gyii mu, mɛɛ yɛ ɔ fɔyl, amaa eɛ
biti ɔ nyɛ nkpa kakpaa. Lu fɛɛ lbwaarɛ man sun mɛ, Mu-Bii
mu ba dulinyaa nɔmu tɔ, yɛ n ba bun kimu tɔ asa kɔpɛ,
amaa ɔ sun mɛ nɔn yɛ n ba waa bamu ɔmɔlɛɛɛɛ.



1 Gy 5:11-13 Inimuo i gyε asin mu γε, lbwaare sa anε nkpa kakpaa, nu kanin nkpa kakpaa nimu bu Mu-Bii to nin.

Okumaa mu nu o kooε Obii mu gyii mu su nkpa, amaa okumaa mu nu o man kooε lbwaare Mu-Bii mu gyii mu man su nkpa kakpaa nimu. N kyuroo owule nimu sa fanε mu nu fan kooε Yesu gyii fεε o γε lbwaare Mu-Bii mu, ke fan nγε bu fεε fan su nkpa kakpaa



Gyn 14; 2 Korinto abi 5; Asl 4, 21, 22

Storyline by: Edward D. Hughes

Illustrated by: Lazarus
and Alastair Paterson

Adapted by: Sarah S.

Nawuri NT (naw) © 2013, Wycliffe Bible Translators, Inc.
All rights reserved.

<https://live.bible.is/bible/NAWWBT/MAT/1>

©2025 Bible for Children, Inc.

www.M1914.org

www.bibleforchildren.org

