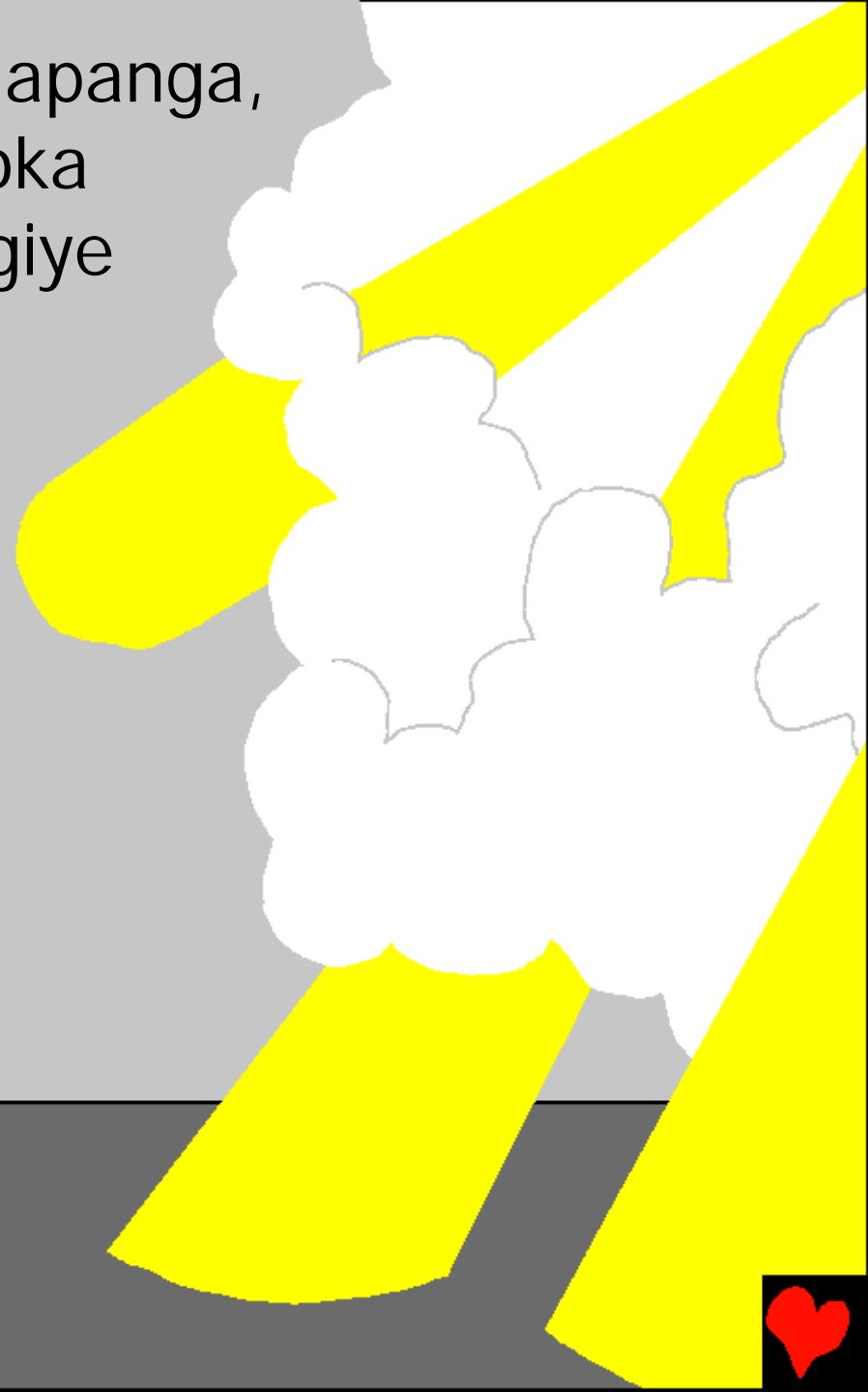




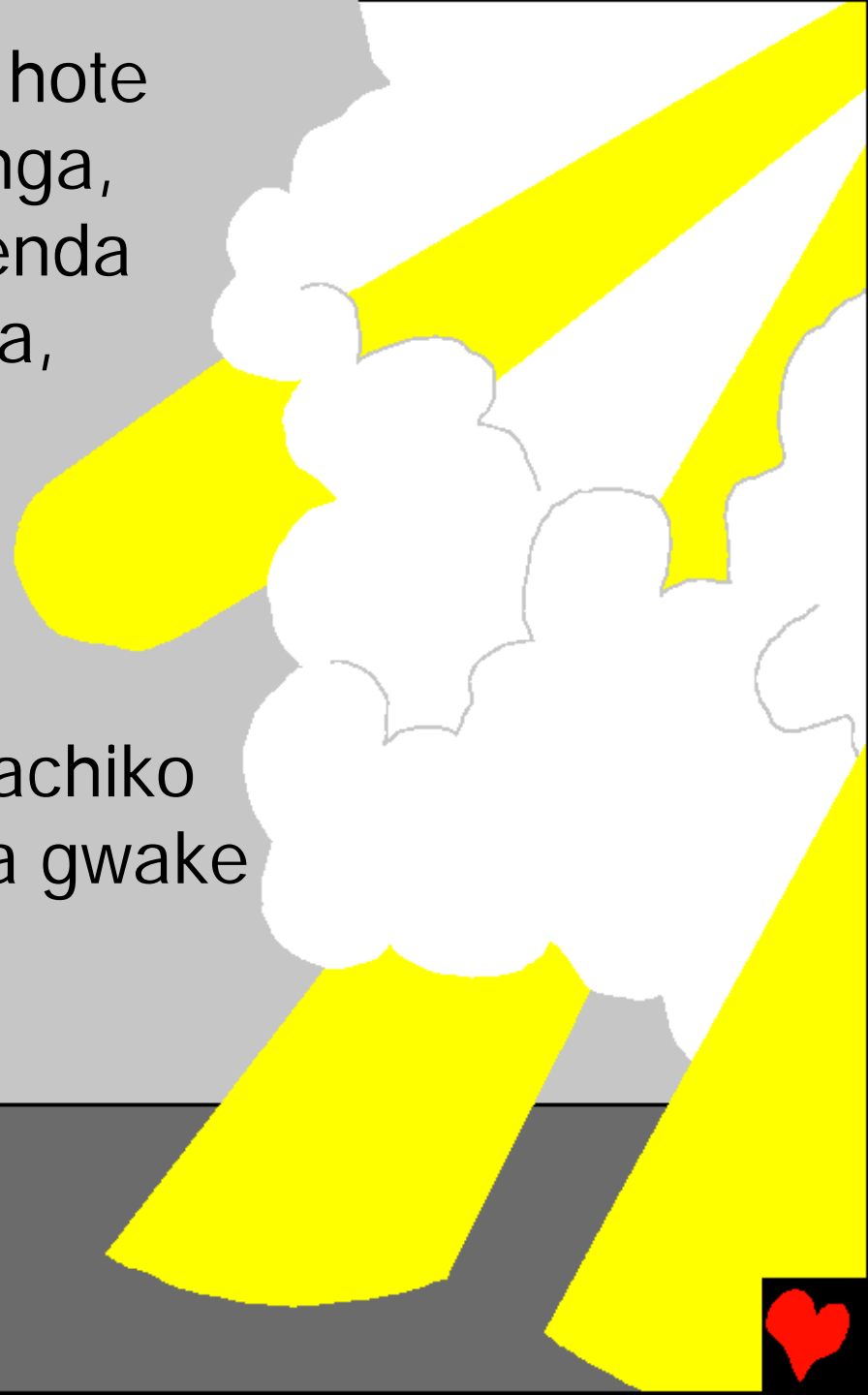
Pamwehe gwa chita gwa ndumbo jhake Elizabete,  
Chapanga ajhakuntuma ntumiche gwake jwa kunane  
jwankemitwa Gabuliele ajhende kubomane jha ku  
Nachalete jhibhii ku kilambo chuku Galilaya. Kwa  
nchikana jhumo jwangakongana na munalome  
jwakemitwa Maliya, jwenio apalwa kutolelwa na mundo  
jhumo liina lyake Uchupo, jwahumii  
mulukolo Iwa Daude.



Ntumiche jwa kunane kwa Chapanga,  
ajhakunyanguu, "Maliya nkotoka  
kujhoghopa, Chapanga anangiye  
umbone gwake. Mwenga  
nanng'egha ndumbo, na  
kupapa mwana munalome  
na mabhene namutina liina  
lyake Yecho."



“Jwenio nabhaha nkolongwa, hote nakemwa Mwana jwa Chapanga, na Bhambo Chapanga chantenda kubhehe munahota nkolongwa, ngita chabhii munahota nkolongwa hoko mundo Daude. Hote jwenio nabhaha ndi munahota nkolongwa jwa kibheleko cha Yakobu kwa machiko ghoha, na unahota nkolongwa gwake ghangapeta!”



Bhahe, Maliya ajhakunobholela  
ntumiche jwa Chapanga jhola,  
“Ghenagha naghatendeka bhole,  
na nenga ninakongana jhe na  
munalome?”



Ntumiche jwa kunane kwa Chapanga  
ajhakunyanguu, "Uhuke gwa  
Chapanga nahulukiya panane jhino,  
na uhotolo gwa Chapanga  
Nkolongwa naghuyekelela.  
Nhwalo Mwana jwenio  
jwapalwa kubhelukwa,  
nakemwa mwana jwa  
Jwanyahinyahi,  
Mwana jwa  
Chapanga."



Ghakapetite ndeka machiko ghamahela,  
Maliya ajhakutenda mwanja gwa kubhutuka  
gwa kujhenda ku kilambo cha kubomane  
jhibhii kwiitombe yaku  
Yudeya. Pahikita kwenio,  
ajhaku hikila munyumba  
jha Zakaliya na  
kunyambucha  
Elizabethete.



Elizabeth pajhohina tu Maliya inyambucha,  
kamwana kamulutumbo Iwa Elizabeth  
kajhakuomba, na kongo Elizabeth atwelii  
Uhuke gwa Chapanga twe,  
alongila kunonoho,  
"Nkwete mota Elizabeth  
kupeta akakeghe  
bhoha, na jwenio  
jhumumpala kumpapa  
hele jhuna mota!"



Bhahe, kubhelukwa kwa  
Yecho Kilichitu kukibha  
naha, Maliya, majhe  
mundo, akibha nchumba  
mundo Uchupo. Nambo  
akibha amela kutama  
pamonga ngita  
munalome na  
mwikeghe, Maliya  
abhonikina na ndumbo  
kwa likakala Iya Uhuke  
gwa Chapanga.



Nhwalo Uchupo akibha  
jwaumbone palonge jha  
Chapanga, akapahi  
ndeka kubhehe na hone  
palonge jha bhandu,  
peniya ajhakuwacha  
kunneka kinyemela.



Pakibha ihwacha lilibhe Iyenio, ntumiche jwa Bhambo jwa kunane kwa Chapanga ajhakumpitila mulughono, ajhakunnobholela, "Uchupo mwana gwa Daude, nkota kujhoghopa kuntolela Maliya abhehe nhwana gwino, nhwalo abhii na ndumbo kwa likakala Iya Uhuke gwa Chapanga."



“Nabhelukwa mwana munalome, na  
mwenga namupela liina lyake  
Yecho, jwenio ndi nabhaghombola  
bhando bhake mu uhakaho  
gwabhe.”



Peniya, Uchupo pajhimwika mulughono ajhakuphanga ngita ntumiche jwenio jwa Bhambo channobholile, ajhakuntola Maliya, nhwana mundo ukajhake. Nambo akagholwike nako ndeka ngita mundo na nhwana mundo ade Maliya papapita mwana munalome na Uchupo ajhakuntina liina lyake Yecho.



Machiko ghala, munahota nkolongwa jwa ku Loma  
jwakemitwa Aguchitino, akalaghalikiye naha, bhandu  
bhoha bhibhatamita  
muukolongwa gwa mu  
ilambo ya ku  
Loma



bhakajhandikichwe.



Kila mundo, akajhenda ku kilambo chake  
kukijhandikicha. Helahela Uchupo ajhakubhoka  
kubomane jha ku  
Nachalete jhibhii ku  
kilambo chuku  
Galilaya,



akajhenda  
kubomane jha  
ku Betelehemo jhibhii ku  
kilambo chuku Yudeya, . . .



. . . kwabhelekilwe munahota nkolongwa Daude.  
Nhwalo jweniojho akibha mu kibheluko cha Daude.  
Akalongihine pamonga na  
jwapala kuntolela Maliya  
kukujhandikichwa  
kwenio. Kongo



Maliya abhii na ndumbo.



Pibhakibha kwenio ku  
Betelehemo, lichiko Iya  
kupapa Iya Maliya  
lijhakuphika, . . .



. . . na ajhakupapa mwana mundo jwakutumbulila munalome, ajhakumilingilila winda ya mwana, peniya bhakanghonike mu kibhajha cha ng'ombe, nhwalo bhakapatite jhe pwache munyumba jha



akaghene.



Pakilambo chela pakibha na bhando bhibhaluchita  
mambelele kumighonda, bhakelwiya miho kulonda  
mambelele ghabhe.



Ntumiche jwa kunane kwa Chapanga  
ajhakwapwitikilila pwitu na lumule Iwa  
ungalicho lukolongwa kuhumii kwa  
Bhambo lulangila poha  
ndaa.



Bhoha bhajhakujhoghopa hake, nambo ntumiche jwa  
kunane kwa Chapanga jhola ajhakwalobholela,  
"Nkotoka kujhoghopa! Ninetii

Malobhe gha Mbone gha  
kuhalalila  
kwa  
bhando  
bhoha.



"Dola, deleno kumuche gwa munahota Daude  
abhelwike Nkomboche gwito, ndi Kilichitu Bhambo.  
Bhahe, naibhaha nginyililo jhino,  
namkolela mwana

bhamilingile  
winda na  
bghonike  
mu kipoto

cha kulele  
ng'ombe."



Papa peniya, lilongo lya akatumiche bha kunane kwa Chapanga bhajhakuhika na kukonganika na ntumiche jhola jwa kunane



jwalongalile, . . .



... na bheniya bhannombita Chapanga,  
bhalongila, "Ung'alicho kwa Chapanga  
jwa kunane, na uteeke ubhaha

pannema

pano kwa bhandu  
bhabhahahii  
hake!"



Pabhokita ntumiche jwa kunane kukelebhuka kunane  
kwa Chapanga, na bhibhaluchita bhala na bhene  
bhajhakuchimulilana bhene chika, "Tujhende hote ku  
Betlehemo tukalinge ghanga ghighapitii  
ghatulongolilwe na  
Bhambo."



Bhahe, bhajhakutyanga kajhombe,  
bhajhakunkolela Maliya na unganamundo  
Uchupo na mwana jhola jwabhelwike  
bhabhii mu lipoto lya kulele ng'ombe.



Bhibhaluchita bhala pibhajhomolela kunninga mwana  
jhola, bhajhakwalobholela bhando bhoha malobhe  
ghibhajhohina kuhumii kwa akatumiche bha kunane  
kwa Chapanga ghibhalongila gha mwana  
jwenio.



Yecho akabhelwike  
ku muche gwa ku  
Betelehemo ku  
kilambo chuku  
Yudeya,  
machiko

gheniya Helode akibha Munahota  
nkolongwa. Bhando  
bhubhamanya ghughapala  
kupitila kwa kulolekeya ndondwa  
kuhumii kulipitila lyobha  
bhajhakuhika ku Yeluchalemo.



Bhahakwakonya  
bhando, "Abhii kojhe  
mwana jwabhelwike  
abhehe Munahota  
Nkolongwa  
jwa

Akayahude? Tuiwene ndondwa  
yake ikapitile kulipitila lyobha,  
na twenga tuhikite kunyinamila."



Peniya Helode  
ajhakwakema pakiyepela  
bheniya bhibhamanya  
ndondwa, ajhakwakonya  
lichaa Iya ndondwa  
puipitila.



Peniya  
ajhakwalaghalikiya  
bhajhende ku  
Betelehemmo alongila,  
"Nnyendengane  
mukalole kwa  
uchakaka malobhe gha  
kilemba chenye. Anda  
mupatite unetele na  
nenga helahela nyende  
nikanyinamile."



Pubhajhomalila kunyokanikiya munahota nkolongwa,  
bheniya bhubhaimanyilila ndondwa

bhajakubhokangana. Kwa kuhechuka

kwa kuibhona ndondwa yela  
ibhaibhonita kulihumii lyobha

ngailongolila kujhenda nu

kujhema panane

pabhii mwana.



Bhahe, bhajhakujhingii munyumba, bhajhakummona  
mwana jhola pamonga na Maliya majhe mundo  
bhajhakutama makilikite kunyinamila.

Peniya bhajhakudindula mahako  
ghabhe na kumpela hupo.  
Hupo ya chaabo na mahuta  
gha petelele gha  
manemane na  
ubane.



Chapanga ajhakwakanikiya mulughono bhakota  
kukelebhuka kabhele kwa Helode peniya  
bhajhakujhenda ukajha kwabhe  
kupete ndela jhenge.



Peniya akaghene bhala  
pubhabhokita, ntumiche  
jwa Bhambo jwa kunane  
ajhakumpitila Uchupo  
mulughono,  
ajhakunnobholela,  
"Jhimka mutole mwana  
pamonga na majhe  
mundo, mmutukile ku  
Michile."



"Ntame kwenio ade  
punipala kunnobholela,  
nhwalo Helode ipala  
kunkoma mwana jwenio."

Peniya, Uchupo  
ajhakujhimuka na  
kuntola mwana  
pamonga na majhe  
mundo, ajhakubhoka  
kilo,

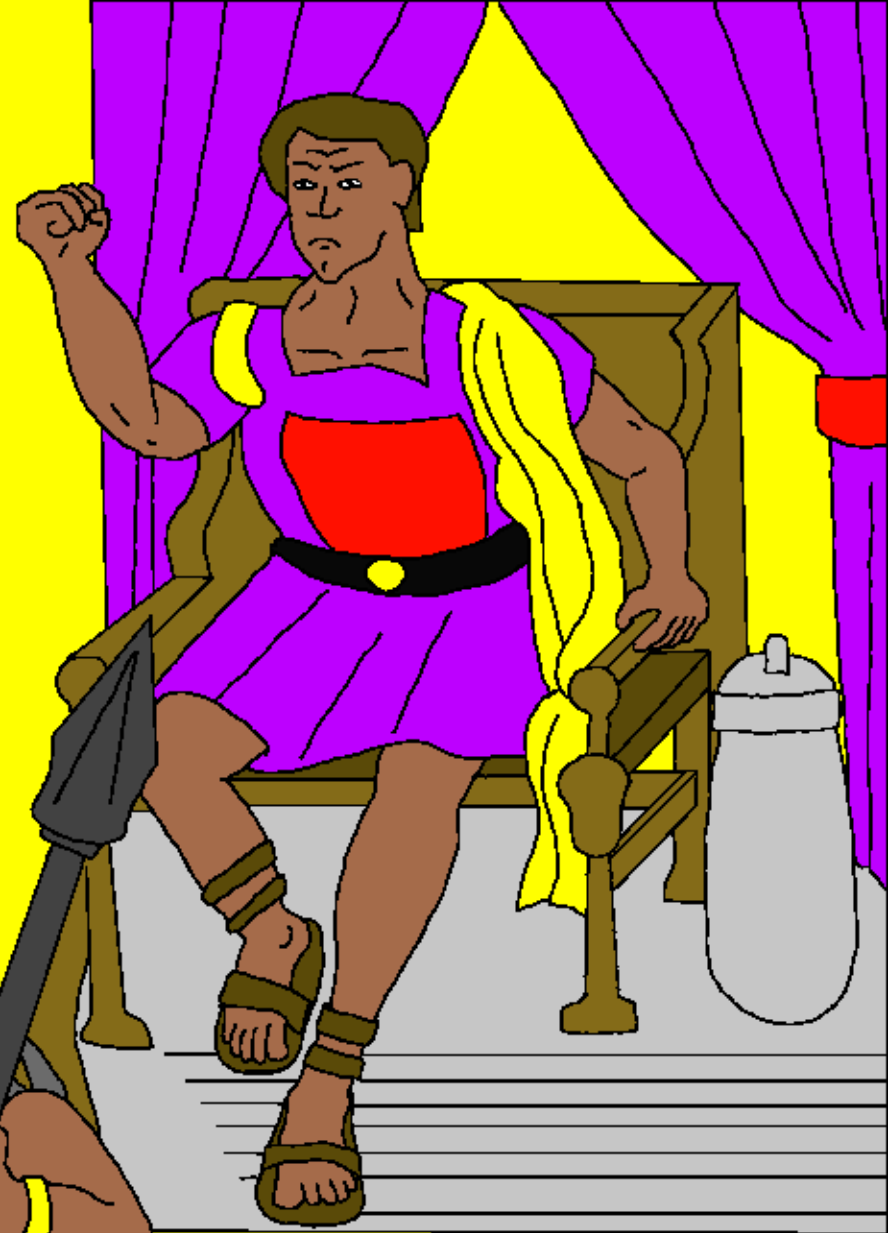
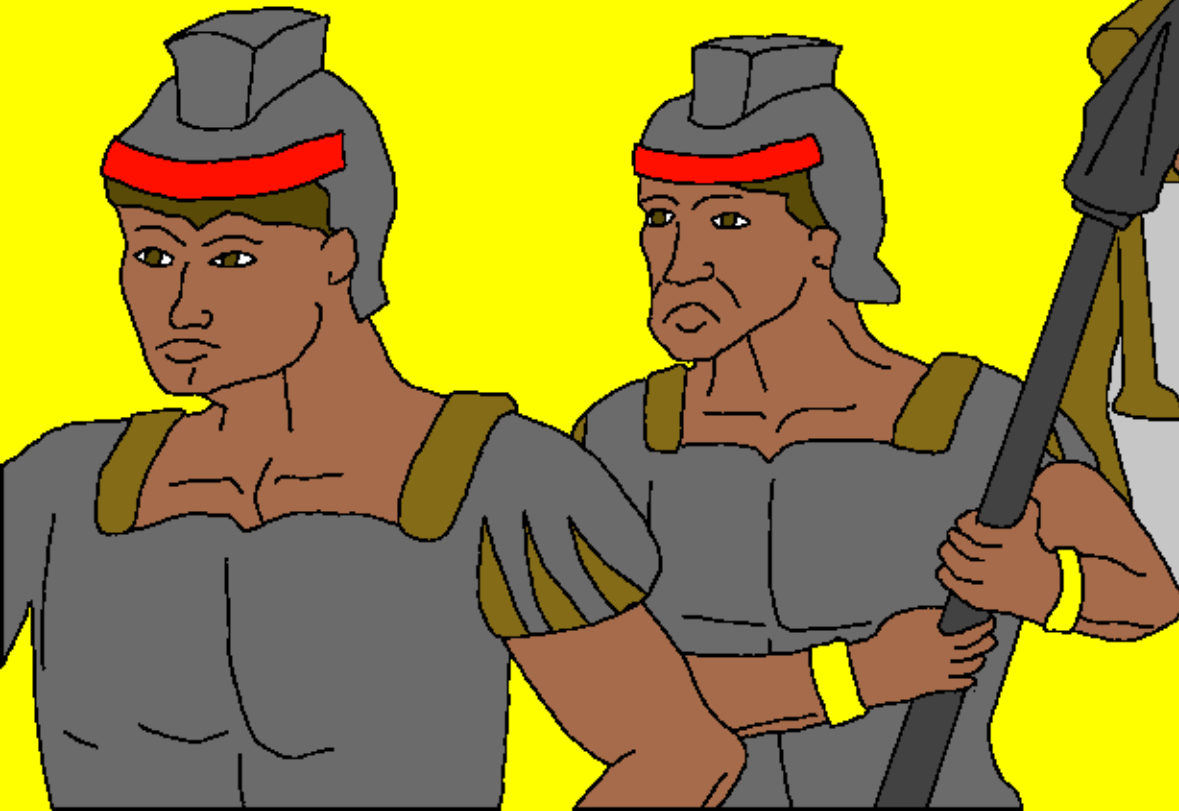
ajhakujhenda ku Michile.  
Ajhakutama kwenio ade  
Helode pajhomwika.



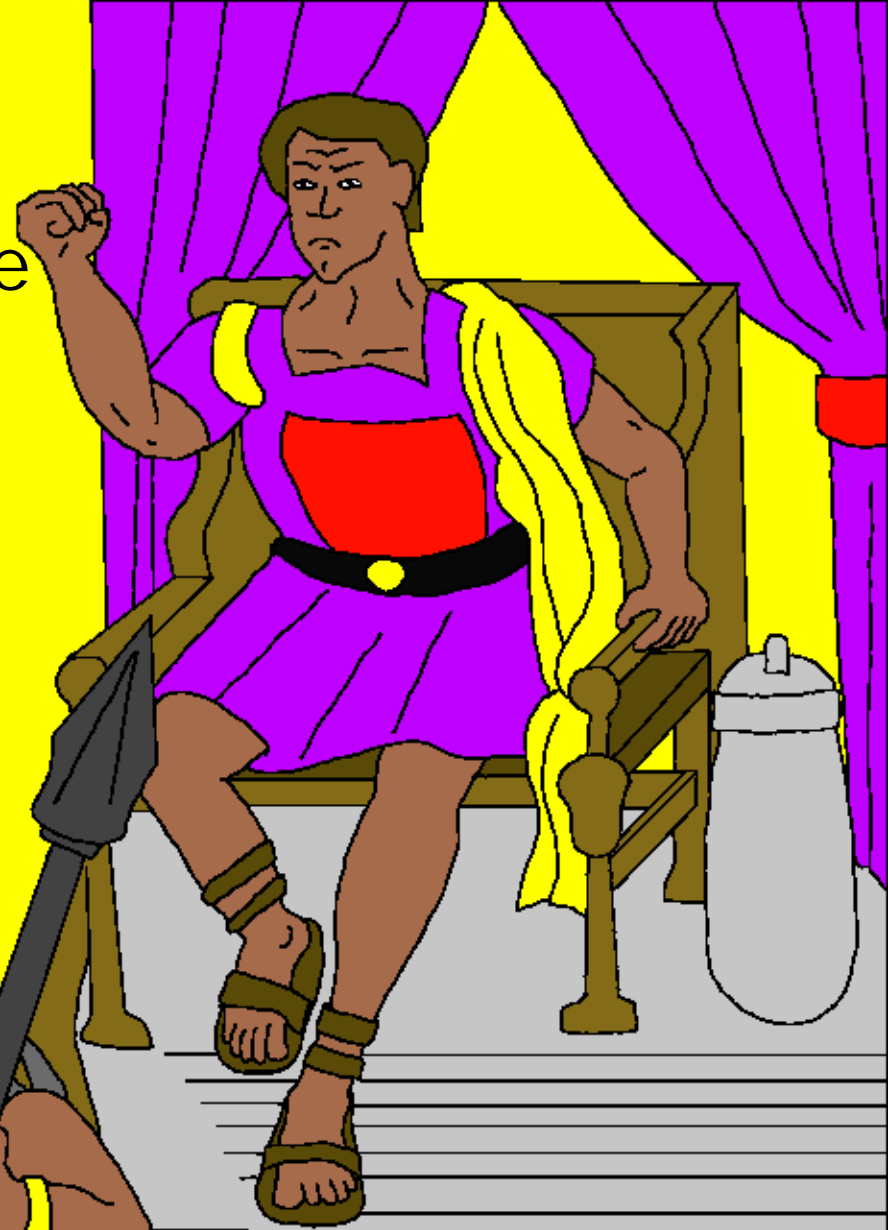
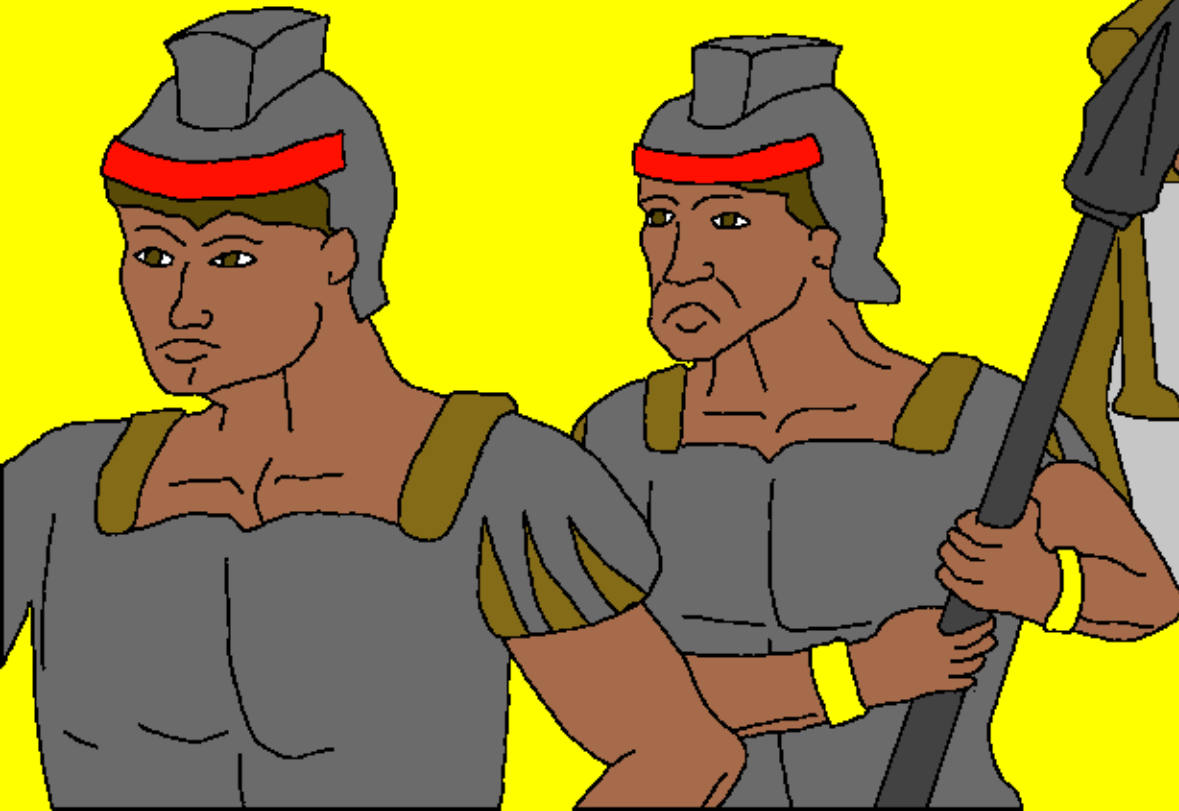
Lilobhe Iyenio lihengika  
kulihenga lilobhe  
lyahengita Bhambo kwa  
ndela jha n nondole lipitile,  
“Nankema mwana mundo  
kubhoke ku Michile.”



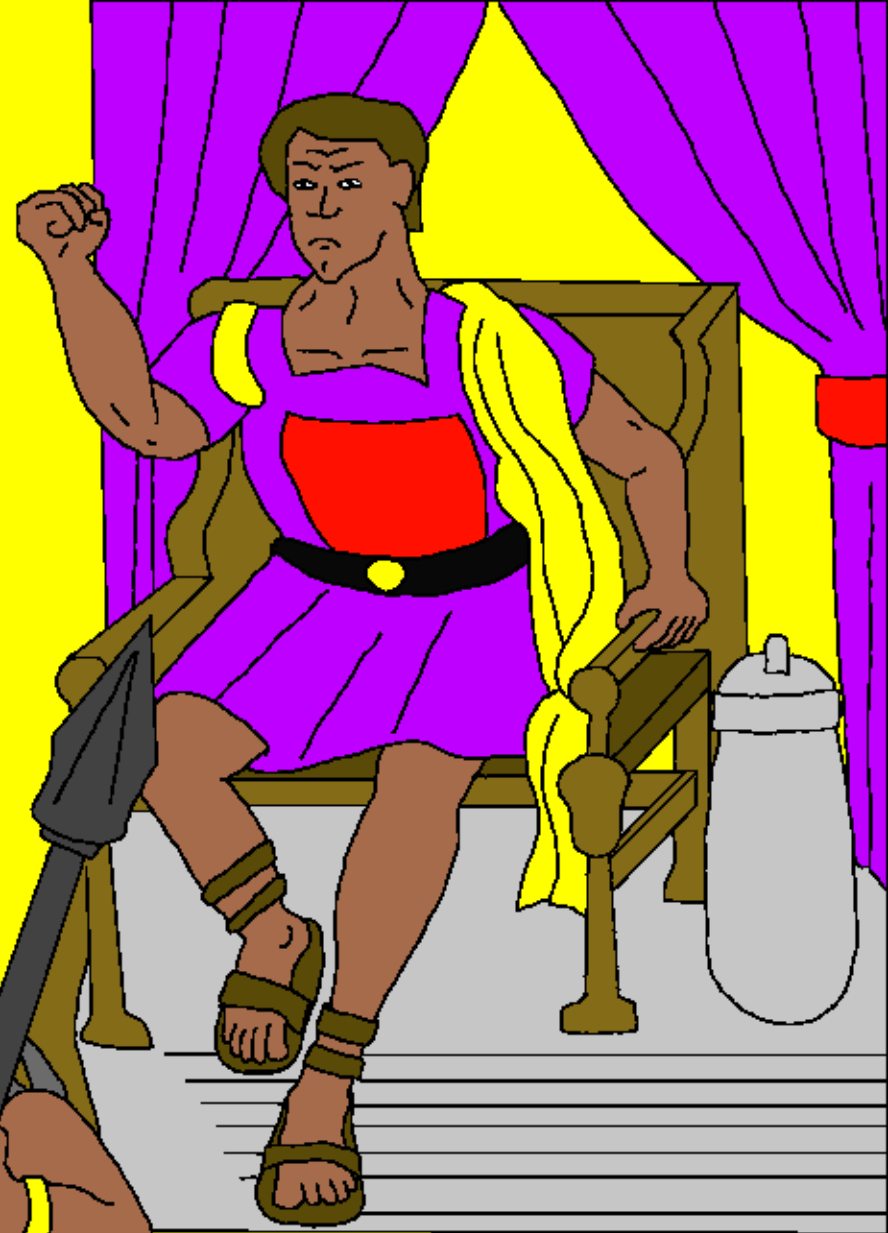
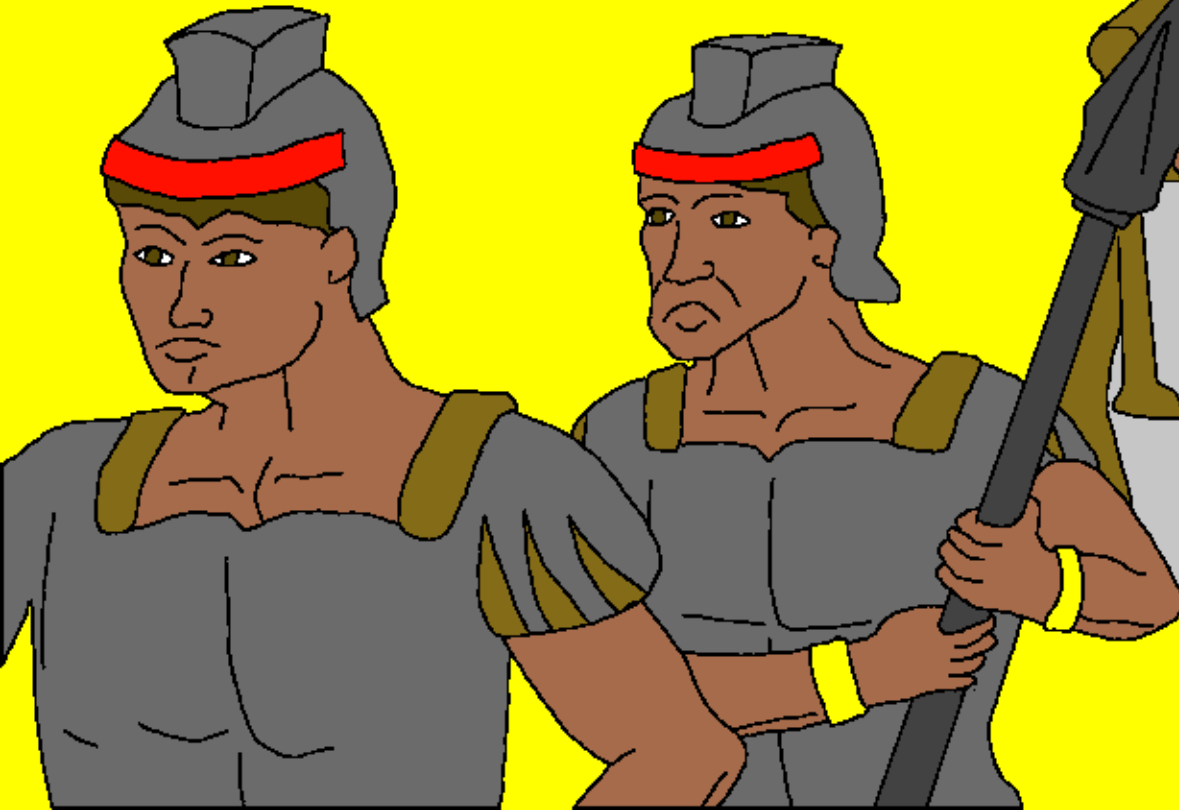
Helode pabhang'ang'anwika  
kubhehe bhala bhubhamanya  
ndondwa bhatekunkoloha,  
ajhakuyoma hake.



Ajhakulaghalikiya yana yoha  
inalome ku muche gwa ku  
Betelehemo na mupelemupele  
jhake bhubhabhii na yaka  
ibhena amu pahe jhake  
bhakomwe.



Akatehi naha kubhoke  
machiko ghalobholilwa  
kuhumii kwa bhala  
bhibhamanye ndondwa.





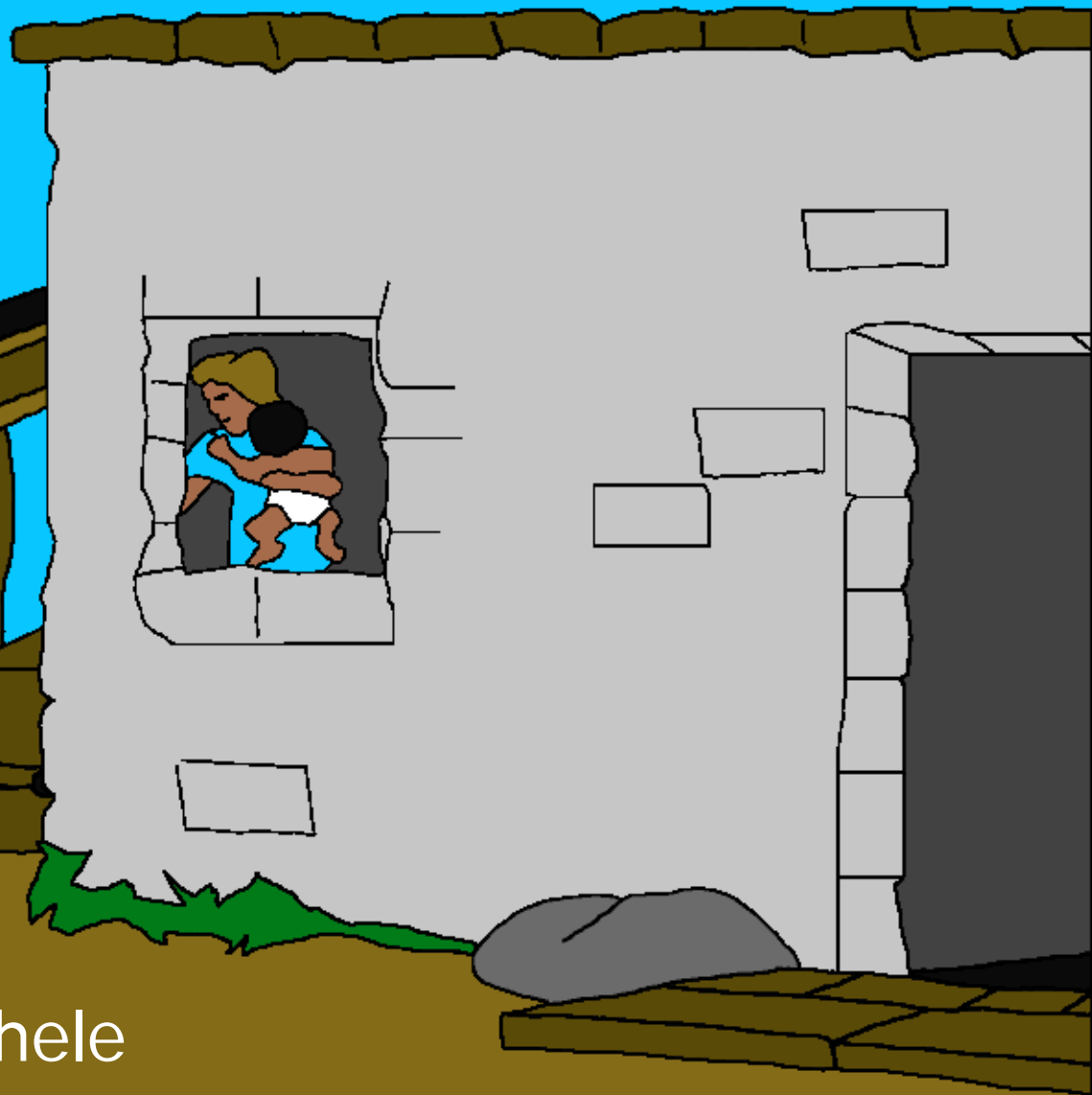
Pajhomwika Helode,  
ntumiche jwa Bhambo  
Chapanga ajhakumpitila  
Uchupo mulughono kola ku  
Michile, ajhakunnobholela,  
"Jhimka mutole mwana  
pamonga na majhe  
mundo, nkelebhuke  
kabhele ku kilambo  
chuku

Ichilachele, mana bhala  
bhibhapala kunkoma  
mwana jwenio bhawile."



Nambo Uchupo  
ajhakujhoha Alikaelo  
mwana gwa Helode  
abhujhii unahota gwa  
kilambo chuku

Yudeya,  
ajhakujhoghopa  
kujhenda kwenio. Kabhele  
ajhakukanikiwa mulugwenio na kulobholelwa  
ajhenda ku Galilaya.



Ajhakujhenda kutama  
ku muche ghukemwa  
ku Nachalete. Ndi  
ghakatimile malobhe  
ghighalongilwe  
kwa



ndela jha milondole, "Na jwenio  
nakemwa mundo jwa ku Nachalete."



Kwa nhwalo Chapanga akapahile  
hake bhandu bha pannema, ade  
ajhakummoha Mwana jwa kanjika,  
kila mundo jwanyeketela akotoka  
kuhobha, nambo abhaha na  
ughome gwa machiko ghoha  
ghangapeta.



Akalome 3:23 nhwalo bhando bhoha bhatehi uhakaho na kupongokewa na ung'alicho gwa Chapanga.

Akalome 6:23 Nhwalo malepo gha uhakaho ndi kuwegha, nambo hupo jha Chapanga ndi ughome gwa machiko ghoha ghangapeta kwa kulombana na Kilichitu Yecho, Bhambo gwito.

Akaebulaniya 9:27 Ngita hela, kila mundo paihwe mala jhimo, peniya ihadabulwa na Chapanga,

Epecho 2:8,9 Nhwalo, kwa umbone gwa Chapanga mangota nkombwilwe kwa ndela jha kihobholelo. Kilebhe chenye chi nhwalo gwa kughagha kwinojhe, nambo ndi hupo jha Chapanga. Ihumii muitendwa hinojhe, kwa gheniya mundo jhojhoha angalokejhe kilebhe.



Akalome 10:9,10 Anda nnyeketile kwa nnomo gwino kubhehe Yecho ndi Bhambo na kunyeketela kuhumii kumwojho gwino kubhehe Chapanga akayokiche kuhumii kubhawile, ndi nang'ombokoka. Kwa nhwalo kwa mwojho mundo ujheketila, Chapanga amalangila jwamaha palonge jhake, na jwenio pajheketila kihobholelo kwa nnomo gwake ughombokoka.

Yohane 3:16,17 Kwa nhwalo Chapanga akapahile hake bhandu bha pannema, ade ajhakummoha Mwana jwa kanjika, kila mundo jwanyeketela akotoka kuhobha, nambo abhaha na ughome gwa machiko ghoha ghangapeta. Nhwalo Chapanga akantumite ndeka Mwana mundo pannema pano kwahadabula bhandu, nambo nnema aughombole kwa kupete jwenio.



1 Yohane 5:11-13 Na malobhe gheniya ndi ghanga,  
Chapanga atupii ughome gwa machiko ghoha  
ghangapeta, na ghome gwenio ubhii nkate jha Mwana.  
Mundo jhojhoha jwabhinako Mwana gwa Chapanga abhii  
na ghome gweno, jwangabhehe na Mwana gwa  
Chapanga akwetijhe ghome. Ninnyandikila mangota  
ilebhe henge bhumunnyeketile liina Iya Mwana gwa  
Chapanga, umanye kubhehe mmi na ughome gwa  
machiko ghoha ghangapeta.



Matei 1-2; Luka 1-2

Storyline by: Edward D. Hughes

Illustrated by: M. Maillot  
and Alastair Paterson

Adapted by: E. Frischbutter; Sarah S.

Ndendeule Bible (dne) @The Word for the World  
International and Ndendeule Language Translation. All  
rights reserved

<https://www.bible.com/bible/3940/GEN.1.NDEBV>

©2026 Bible for Children, Inc.

[www.M1914.org](http://www.M1914.org)

[www.bibleforchildren.org](http://www.bibleforchildren.org)

