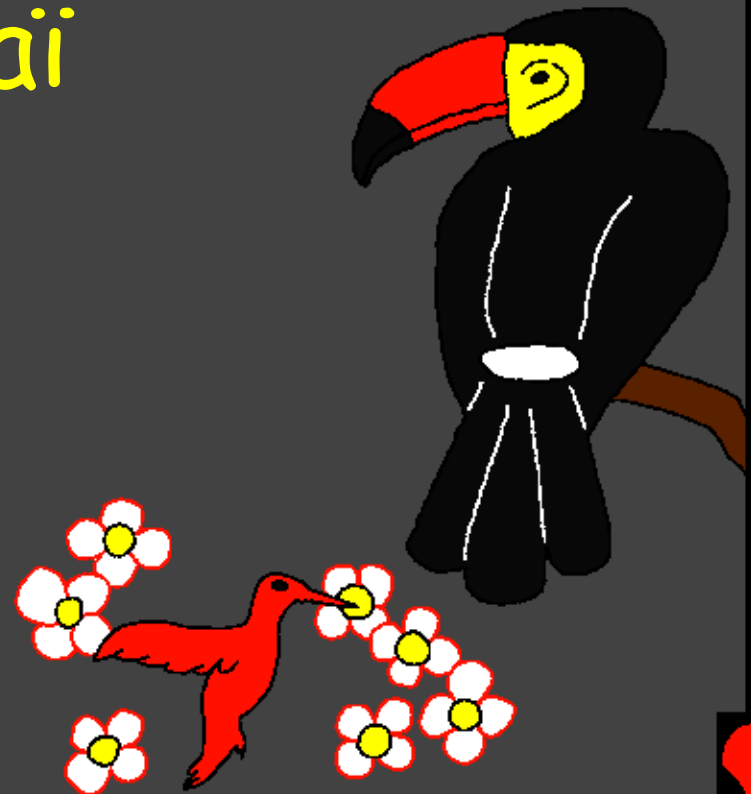
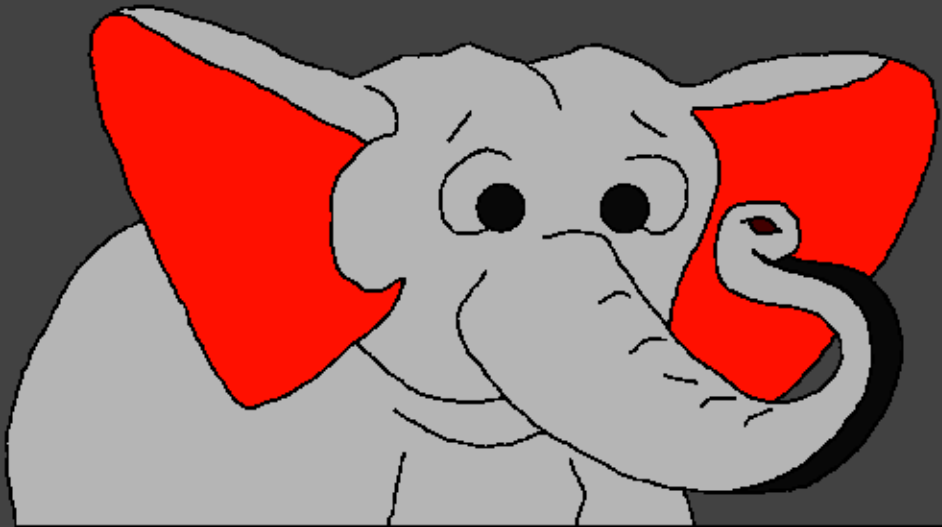


Maktub'g to ge Kemeé Mbata Ngannje
baciné

Loo ge Allah
Unda Néje Lai



Ddjéndangué: Edward Hughes

Djétumguiné: Byron Unger; Lazarus
Alastair Paterson

Djéria: Bob Davies; Tammy S.

Djetelguiné: www.christian-translation.com

Djerea: Bible for Children
www.M1914.org

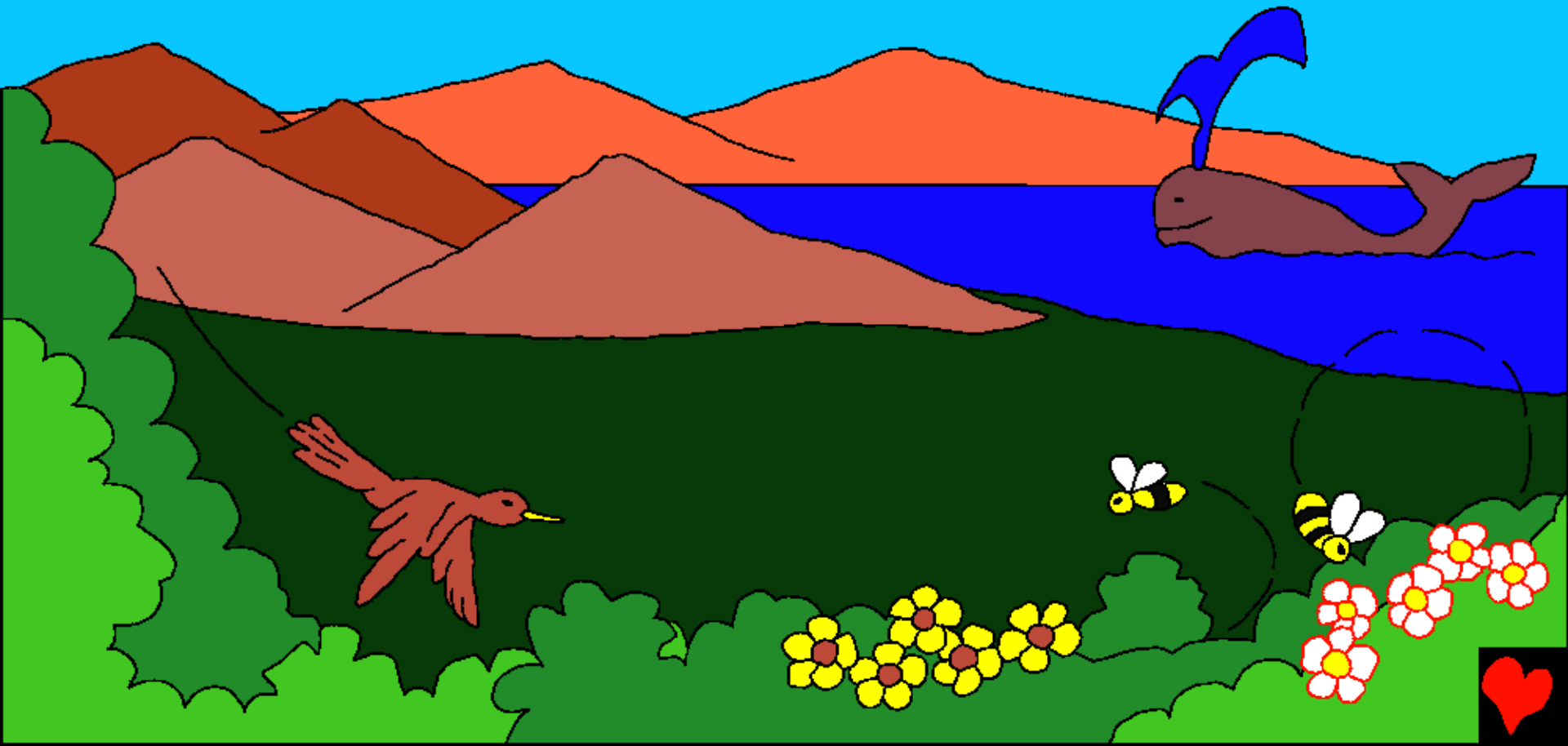
©2023 Bible for Children, Inc.
A kasje kem kunja, maktub nélé Lal gad.



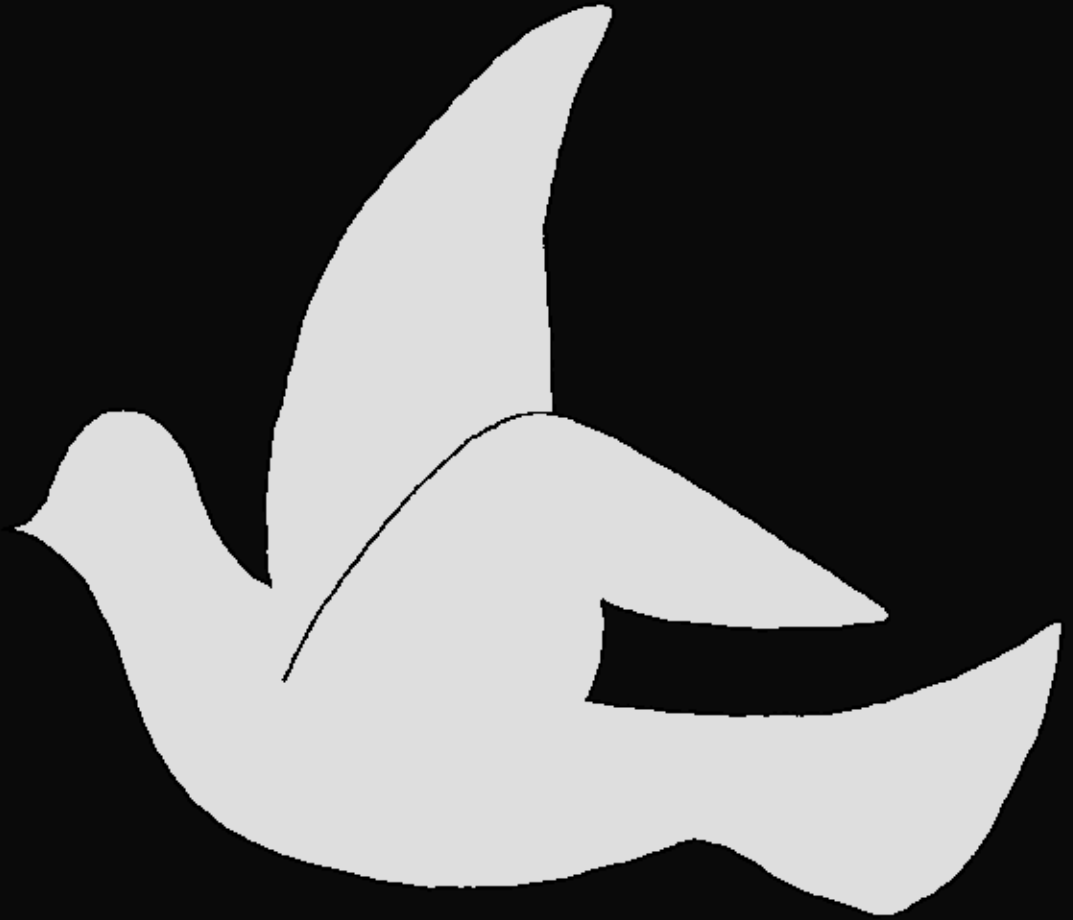
Nan bba undaci wa? Maktub'g to ge Keme'e, taa le Allah, or ginne kis kamba le deou, Unda ginné leou bba. Allah Unda deou ge dotar yeen Unda rea le Adam, Allah Unda Adam ge douji nang. Loo ge Allah too Keme reou em Adam'g, yeen neelé tel ci khem. Yeen ci lo ndö ge maji rea le Eden.



Bad bba mba ra Adam, Allah Unda donang ge
madji ge némajije lai ge meede ge lélé. Allah
Unda mbalje, ge kagje, ge yelje ge bagdé
ndoin, ge tedjije ge kandjije ge boi. Ta tol
tia, Allah unda néje lai ge to ge.



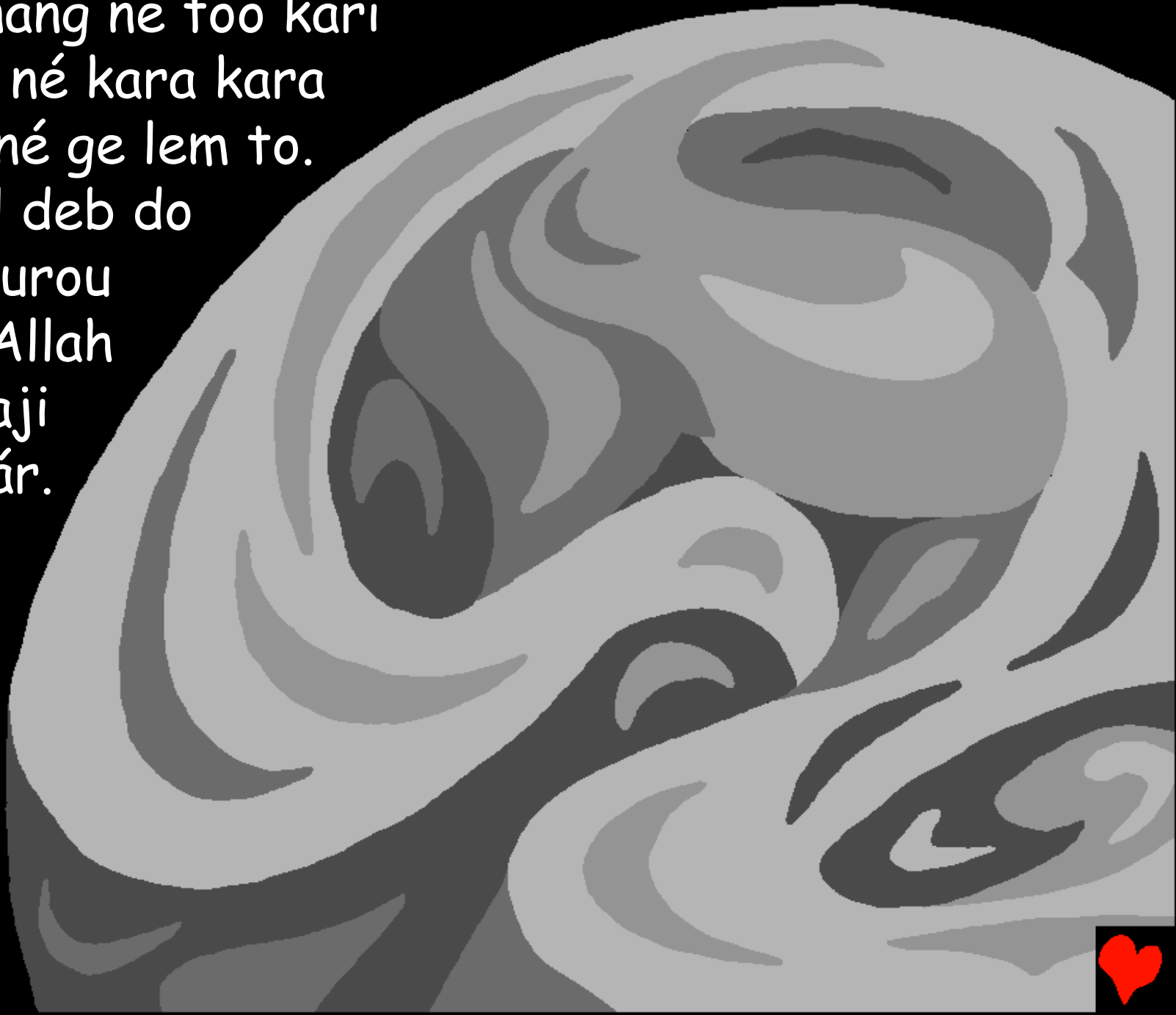
Loo kunda ginné bad
mba kar allah ra néje
bei né kara kara to ge
el, Allah ya ge karé,
deouje kara godo,
donang kara godo,
néje lai godo, loo
kar kara godo lem,
loo doul Kara godo
lem to, loo ge nang
kara godo, ndo kara
godo lem to, Allah ge
karé bba. To ge bbe
bba Allah ra né.



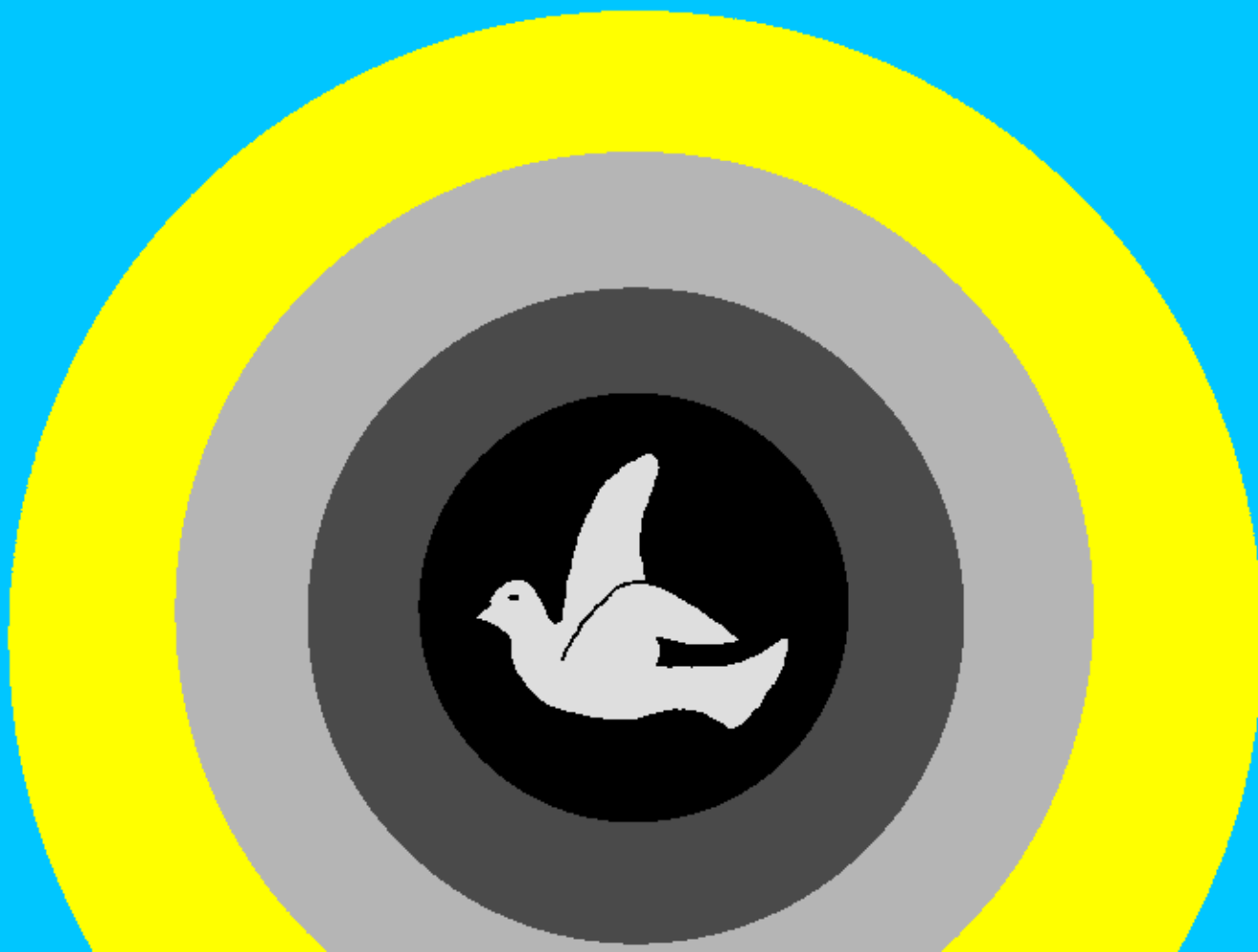
Kedé ge dotar Allah unda dara ge nang né.



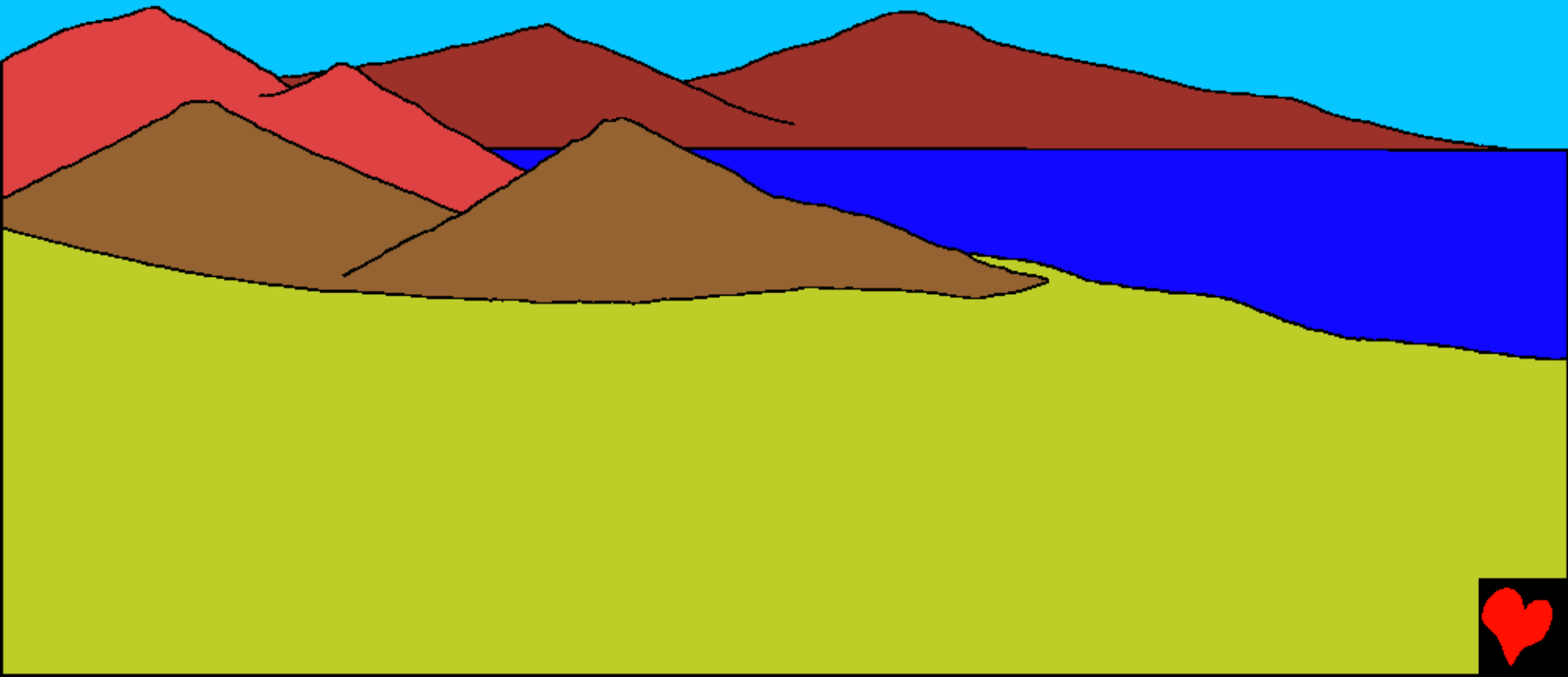
Loo ge nang né too kari
bba lem né kara kara
godo kené ge lem to.
Loo ndul deb do
wel ge ourou
lem to. Allah
pana, maji
kar loo ár.



Nda loo ár ya to. Loo kar lee Allah baré ndo lem, loo ge too pi yeen baré loo ndul lem to. Loo ndul kara to kené ge lem, loo kar kara to kené ge lem to. Yeen bba to ndo ge dotar lee.



Ndo ge dje kom ge djo lee, Allah ar mannje
mbon nan, mannje ge pen lo ge tar lem ge
manje ge to pen loo ge nang lem to.



Allah pana maji kar nang lee kinja ge mouje ge kamje
bagsa ge kand dee meen dee'g meen dee'g lem ge
kagje lem to, néje ne lee to bbe ya. Loo
kar kara to kennen'g lem loo
ndul kara to kennen'g lem
to. Yeen bba to ndo dje
kom ge mounda.



Allah unda kar lem nai lem ge
kerméje lem to. To ge bbe bba
loo ndul to kennen'g lem, loo kar
kara to kennen'g lem to. Yeen
mba to ndo ge dje kom ge sö.

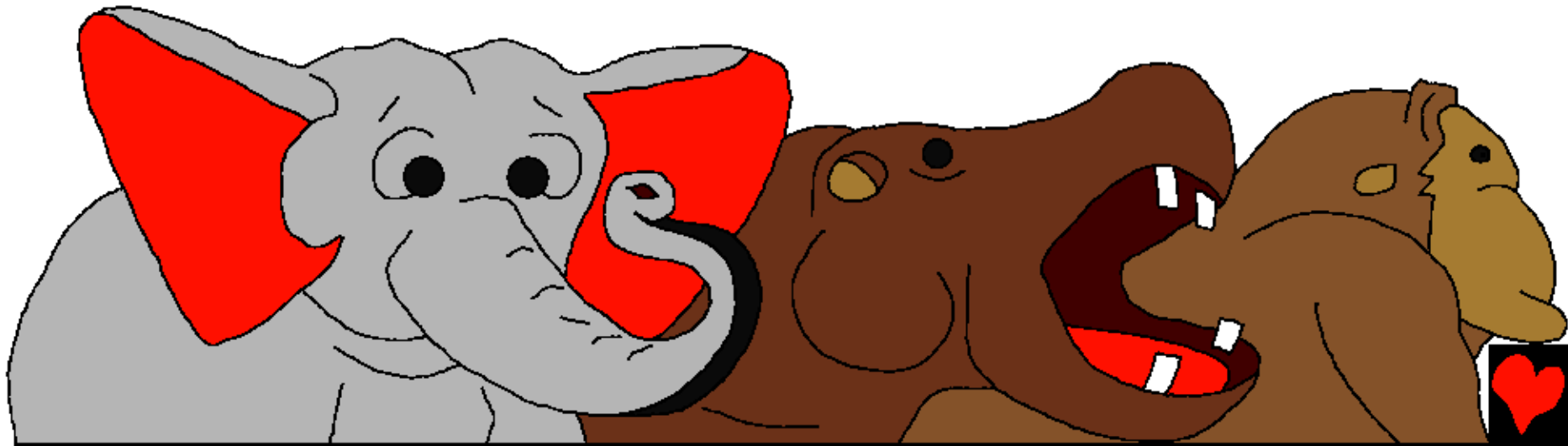


Ne kundaje ge dan mann'g,
kanjije lem ge yelje lem to.
Deen bba to né kundaje le
Allah. Ndo dje kom ge mi
yeen unda mannje ge boi
boi lem ge deen ge lam lam
lem to. Yeen unda yelje lai
ge bag dee ge bell dee lem
to. Loo kar kara to kennen'g
lem ge loo ndul kara to
kennen'g lem to. Yeen bba
to ndo ge dje kom ge mi.

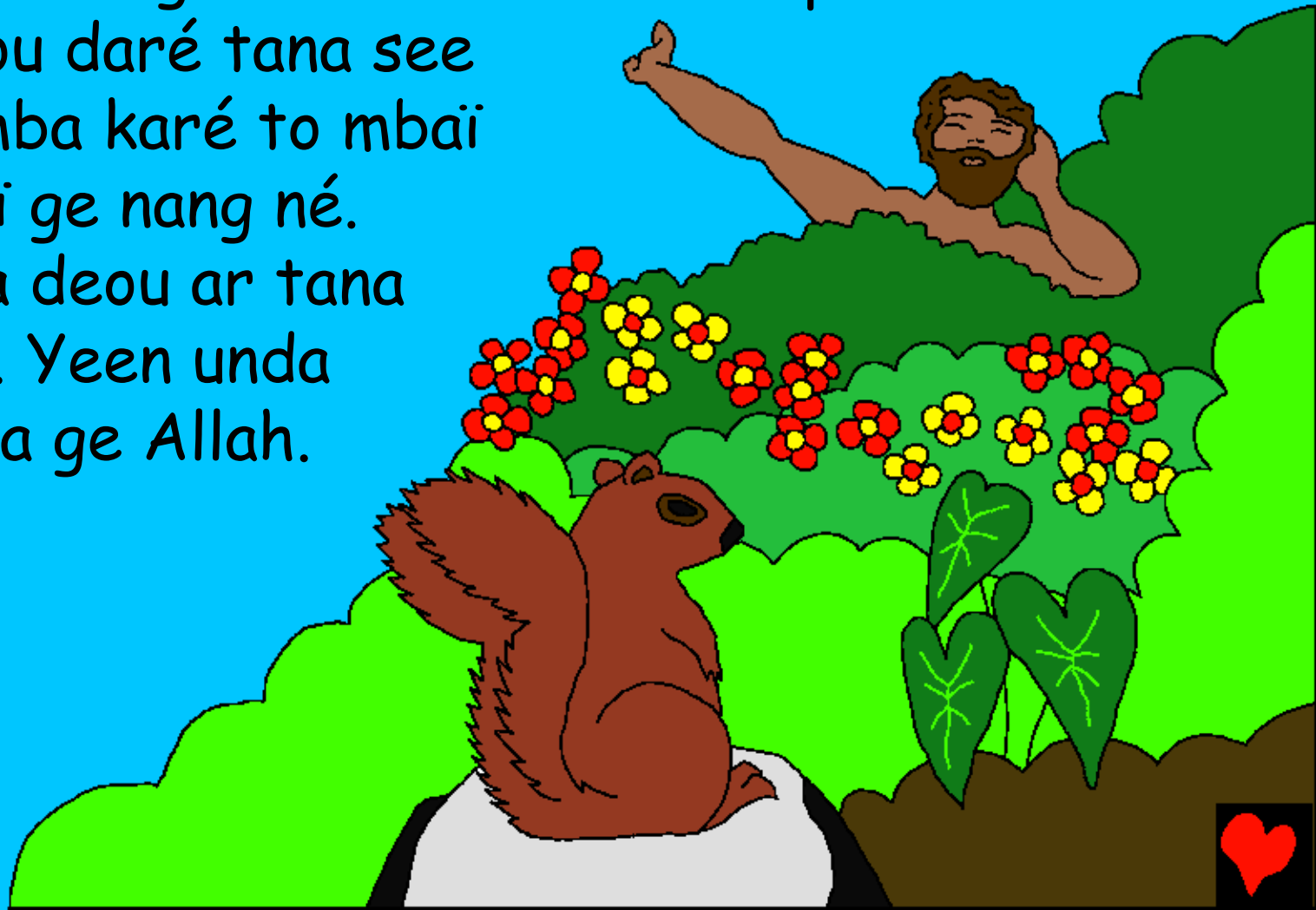


Gee ge gogo Allah pana, maji kar nang né teen ge né kundaje ge daou kem bba ge geldee geldee, da kulje lem ge daje dag nang ge ta meendee lem ge daje ge daou nang né ge geldee geldee lem to. Kerje ge to bel lem, bedje lem, ndo ge né lee Allah Unda néje lai.

Loo kar kara to kennen'g lem, loo ndul kara to kennen'g lem to. To ndo ge dje kom misan.



Ndo ge dje kom ge misan Allah Unda ne ge rang ya to bei, né ge to kemee bed, néje lai to maji mbata le deou, nékousa kara to mee ndö ge lem, daje kara to genn mba la né ge deou lem to. Allah pana arci n'raje deou daré tana see ci paipai mba karé to mbai do néje lai ge nang né. Allah unda deou ar tana sea paipai. Yeen unda aré to tana ge Allah.



Allah ula Adam pana,
kagje lai ge me ndö
ge neelé i as kem so
kand dee to ge meei
ndigi, nê kag ge woji
do ger né ge maji
esé né majel le i a
so kandee el mbata
mee ndea ge i a so
kandee nda i a kwei.



Mjeshiqenean Allah to maji mba kar deou shi ge karé el, m'a ra ndjela sea ge a to tana sea bbe to. Njeshiqenean ree ge yelje ge daje lai ge yeen unda neelé ro Adam'g. Adam unda ri dee kara kara lai, yeen to deou ge ger né yan bba ra to ge bbe né dann yelje ge lai ge daje lai lé Adam inga ndjela sea ge tana sea bbe el.



Allah ar bi ge doum koun
rô bbidi tol deou neelé
aré to ge bi pereg. Yeen
or singa sengere karee
kara nda unda denné.
Denné Allah unda lé to
maji mbata le Adam ya.



Allah unda néje lai ge ndo ge misa.
Tobei yeen tordia do ndo ge njekem
ge siri aree to ndo kwa ro. Allah to
njeshiqenean lee de lem, nje kardee
nee lem ge kuramzrdee lem to.



Loo ge Allah Unda Néje Lai

Surta'g wodji dö Allah, maktub'g to ge Kemee

kinga mee

Gi-Néje 1-2

"Taje lei ge dogo."
Pakosje 119:130



Tol Tea



Surta ge to mee maktub'g to ge kemee bed neelé
ula ci ta ge woji do Allah'g njemeenmadji ge
yeen unda ci lem, ge ndigi kar i geree lem to.

Allah ger to ge njen ra nemajelje yaan, yeen bba yeen baree kaiya.
Né kunga doji kaiya le to yo. Né Allah ndigi ci yan bba
ula ngonné ged-ged kara bba, Jesu wei kar kag des'g mbata
kaiyaje. Tobei, Jesu tel shi khem bba lem, yeen aou dara lem
to. To ge i om mei do Jesu'g bba i deje bba kar mee oso
lemssé daa yeen a rané yaa. Yeen a ree shi mei'g lem
i kara shi sea nand sar-sar'g non ya.

Bolé i om mei do'g to ge to ta ge togero nda, i pata né : Mbai
Jesu, m'ger to ge i to Allah, tel roi deou sar wei né mbata kaiyaje
lem, tel shi khem bba lem to. Kogero ya, m'ya shi khemba lem mee
ji'g, ar mei oso lemssé do kaiyaje'g lem, bba kar'm tel pa jea lem
cigi lem, ndo kara ma kaskem shi sei nand sar-sar'g non. Lassem
bba kar'm m'illa ngonni koji doi'g lem, bba kar'm shi kembba
mbata lei to'g ngonni. Amen.

Turaje maktub'g to ge Kemee bed lem, ojije ta'g
Allah ndoje kara kara lai lem. Ja 3:16

