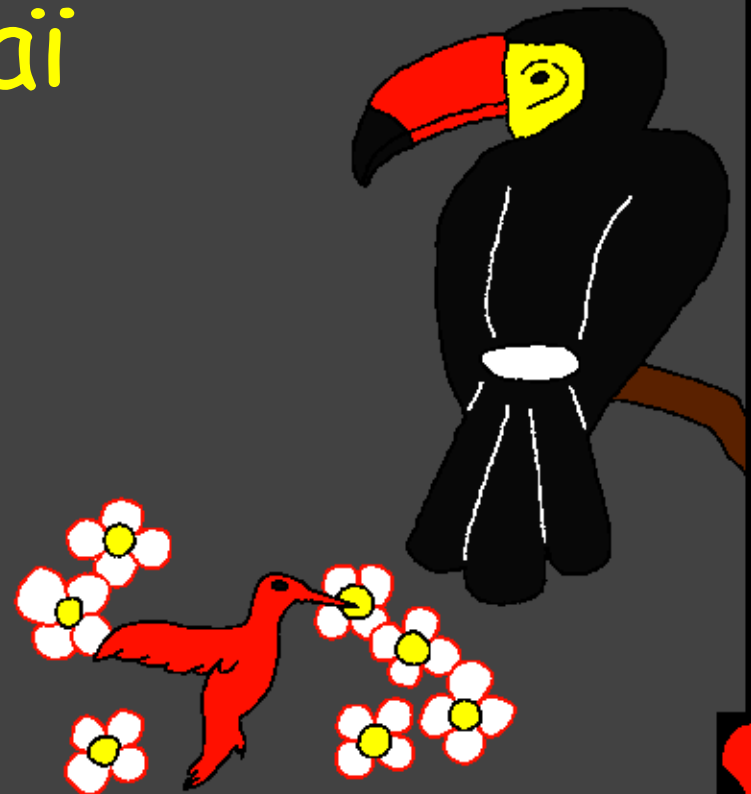
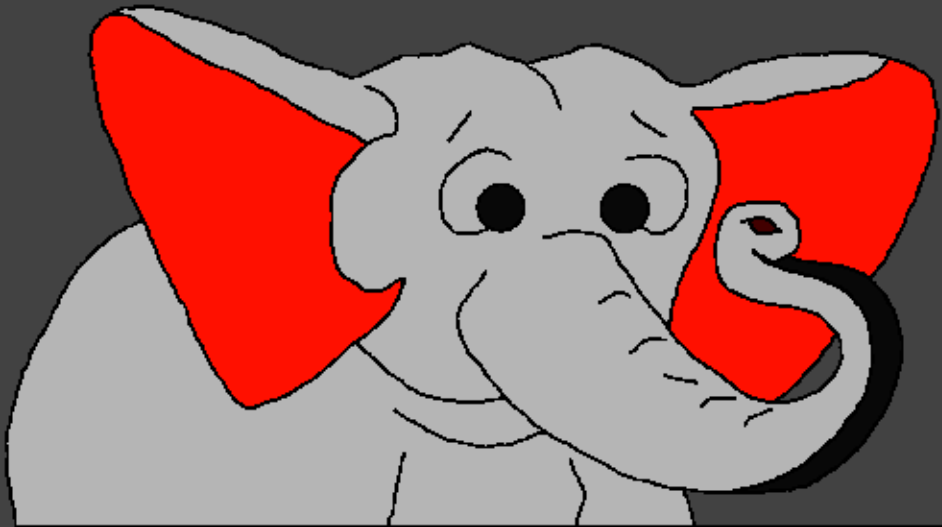


Maktub'g to ge Kemeé Mbata Ngannje
baciné

Loo ge Allah
Unda Néje Lai



Ddjéndangué: Edward Hughes

Djétumguiné: Byron Unger; Lazarus
Alastair Paterson

Djéria: Bob Davies; Tammy S.

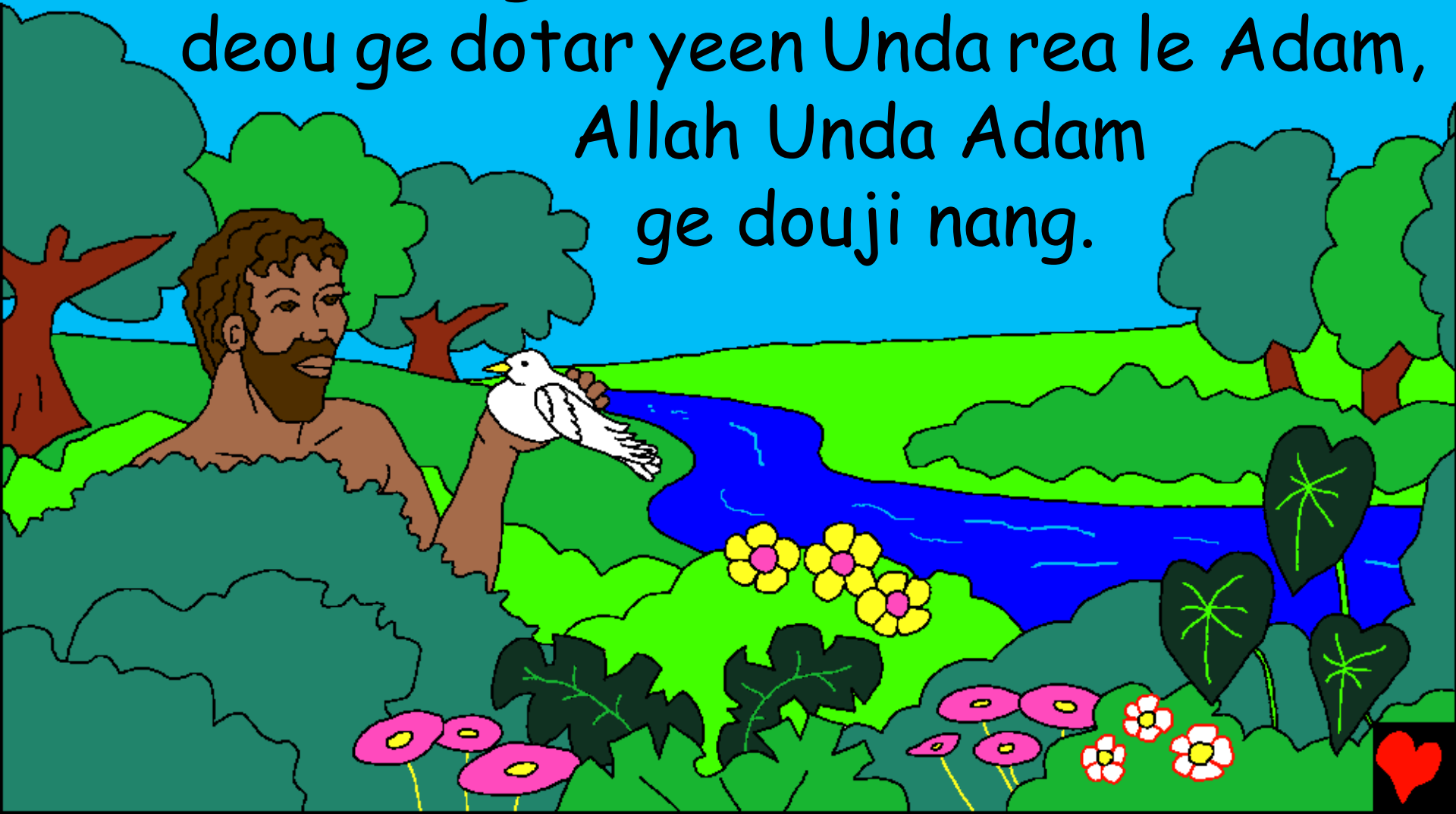
Djetelguiné: www.christian-translation.com

Djerea: Bible for Children
www.M1914.org

©2023 Bible for Children, Inc.
A kasje kem kunja, maktub nélé Lal gad.



Nan bba undaci wa? Maktub'g to ge
Kemee, taa le Allah, or ginne kis kamba
le deou, Unda ginné leou bba. Allah Unda
deou ge dotar yeen Unda rea le Adam,
Allah Unda Adam
ge douji nang.



Loo ge Allah too Keme reou em
Adam'g, yeen neelé tel ci khem.
Yeen ci lo ndö ge maji rea le Eden.



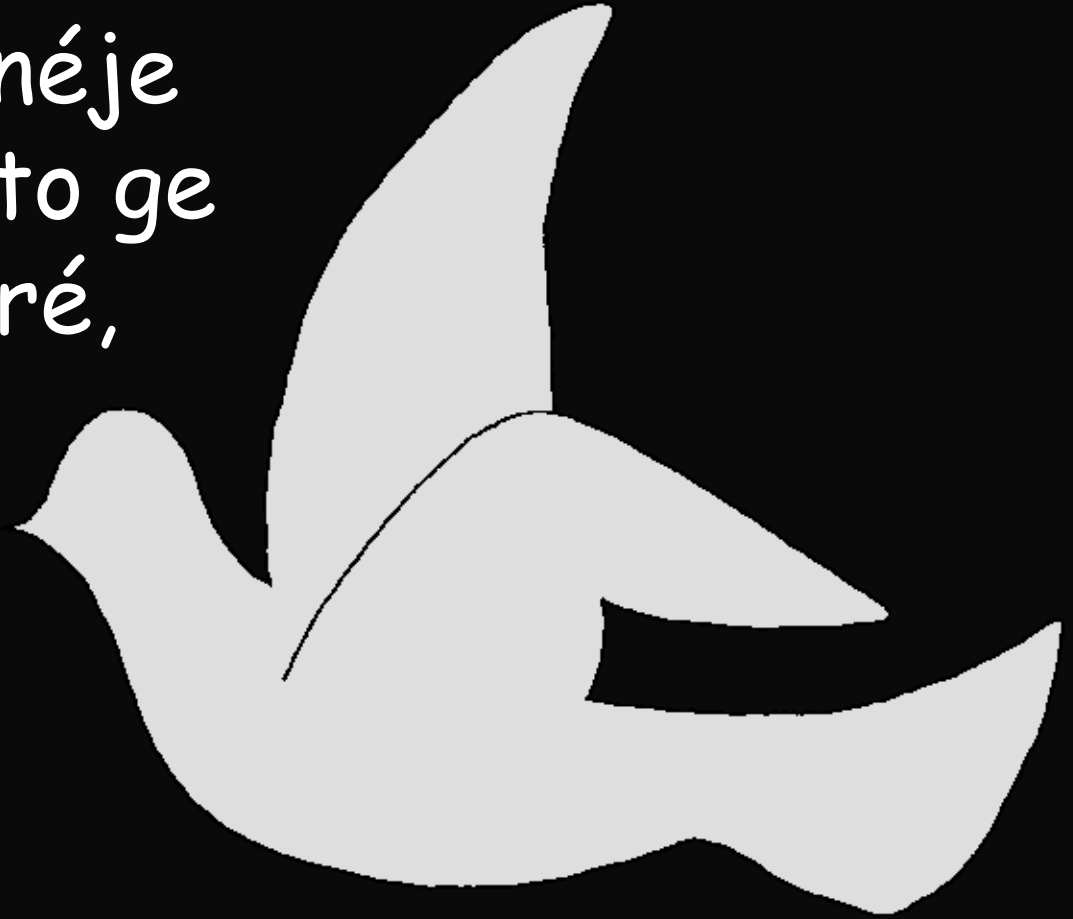
Bad bba mba ra Adam, Allah Unda donang
ge madji ge némajije lai ge meede ge lélé.
Allah Unda mbalje, ge kagje, ge yelje ge
bagdé ndoin, ge tedjije ge kandjije ge boi.

Ta tol tia,

Allah unda néje
lai ge to ge.



Loo kunda ginné bad
mba kar allah ra néje
bei né kara kara to ge
el, Allah ya ge karé,
deouje kara
godo, donang
kara godo, néje
lai godo, loo kar
kara godo lem, ...



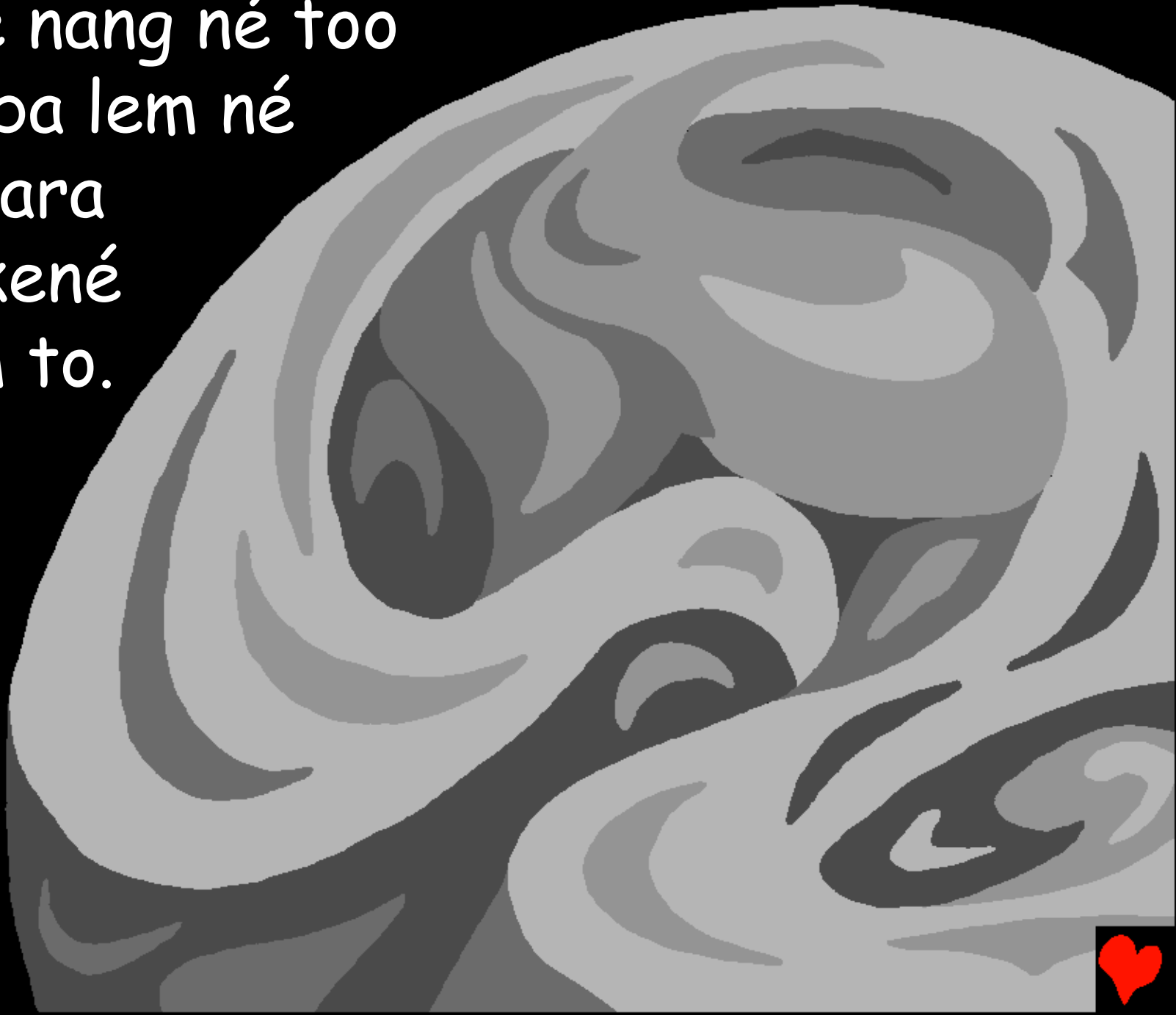
... loo doul Kara godo
lem to, loo ge nang
kara godo, ndo kara
godo lem to,
Allah ge karé
bba. To ge bbe
bba Allah ra né.



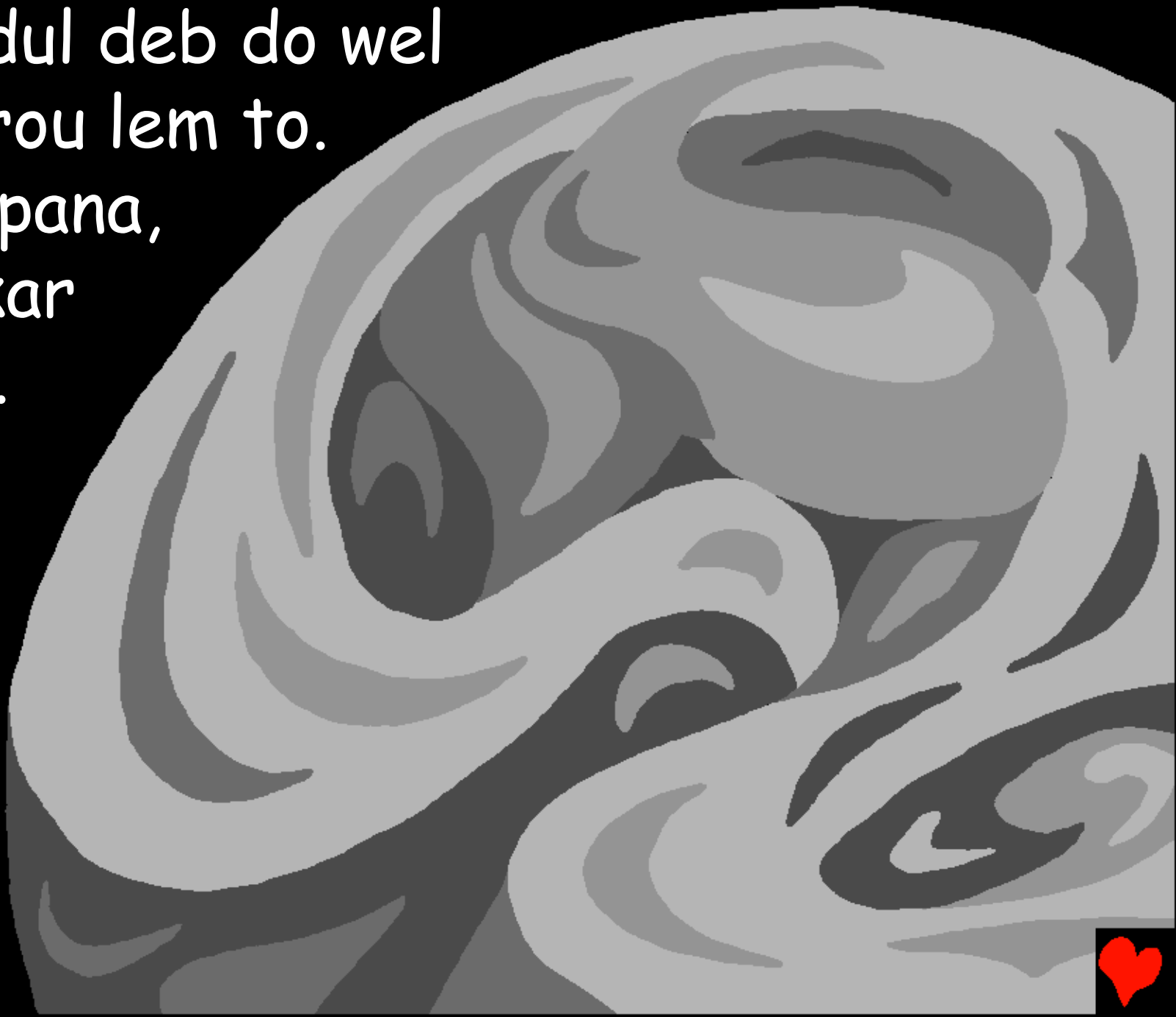
Kedé ge dotar Allah
unda dara ge nang né.



Loo ge nang né too
kari bba lem né
kara kara
godo kené
ge lem to.



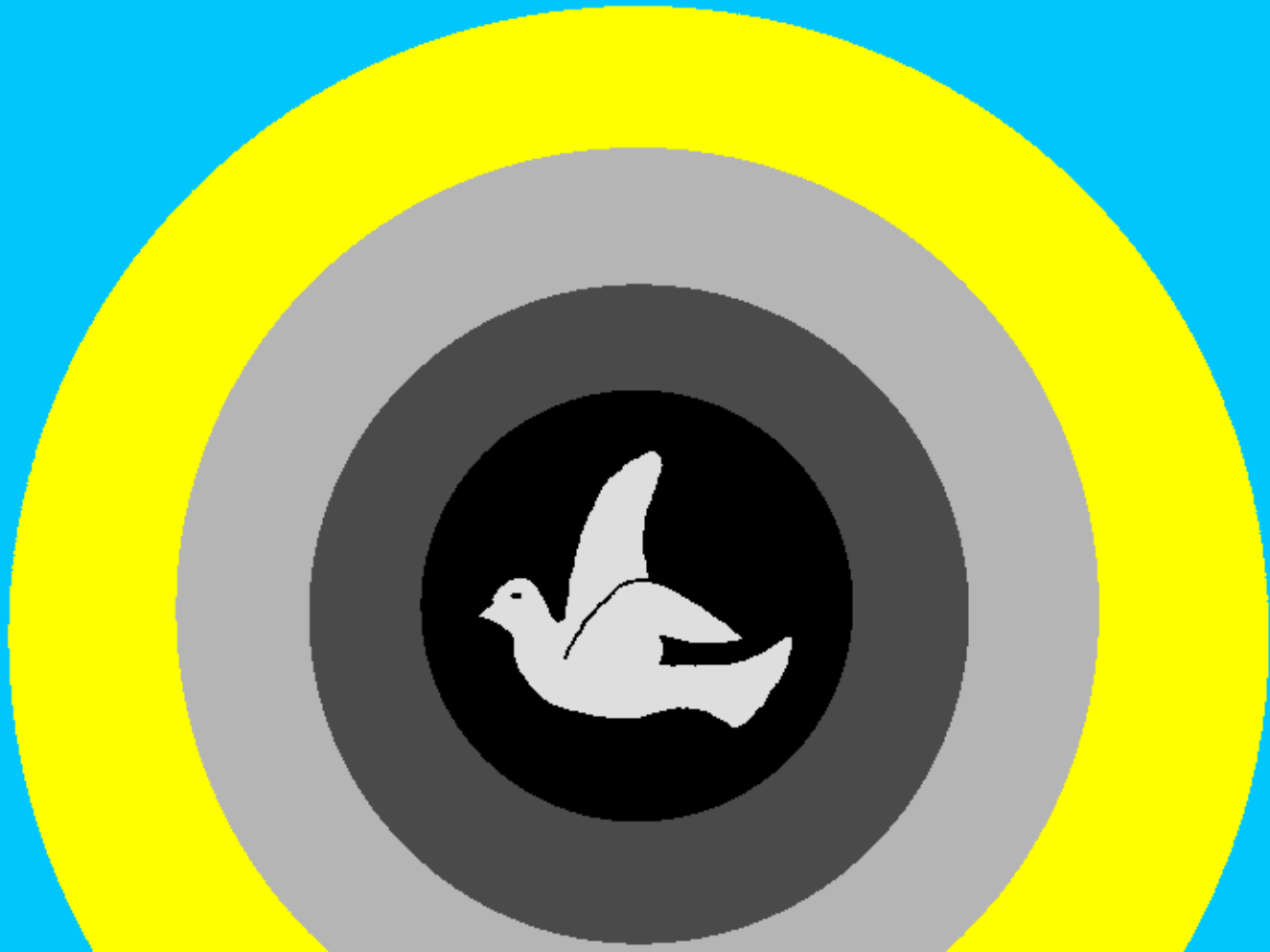
Loo ndul deb do wel
ge ourou lem to.
Allah pana,
maji kar
loo ár.



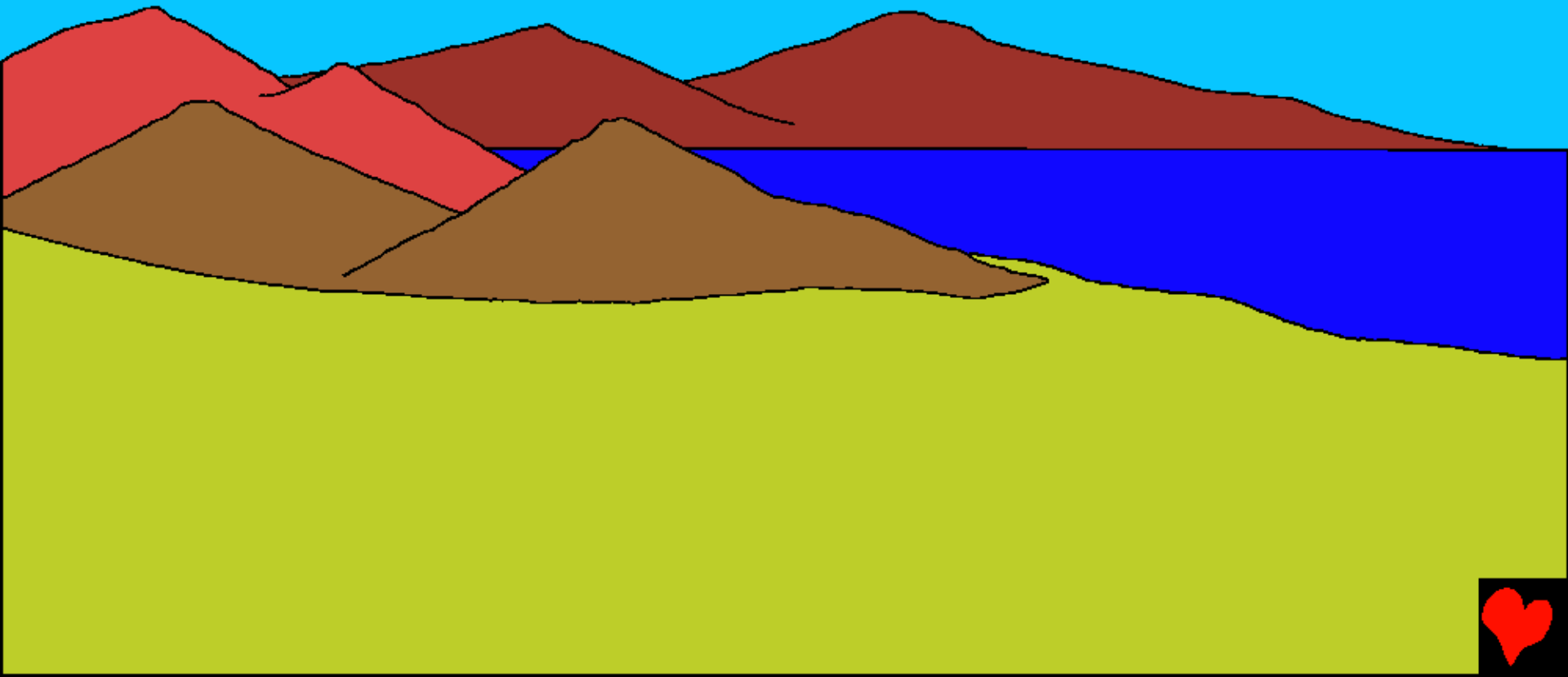
Nda loo ár ya to. Loo kar lee Allah
baré ndo lem, loo ge too pi yeen
baré loo ndul lem to.



Loo ndul kara to kené ge lem, loo
kar kara to kené ge lem to. Yeen
bba to ndo ge dotar lee.



Ndo ge dje kom ge djo lee, Allah
ar mannje mbon nan, mannje ge
pen lo ge tar lem ge manje ge to
pen loo ge nang lem to.



Allah pana maji kar nang lee kinja ge
mouje ge kamje bagsa ge kand dee
meen dee'g meen dee'g
lem ge kagje lem to,
néje ne lee to bbe
ya.



Loo kar kara to kennen'g lem loo ndul
kara to kennen'g lem to.
Yeen bba to ndo dje
kom ge mounda.



Allah unda kar lem nai lem ge kerméje
lem to. To ge bbe bba loo
ndul to kennen'g lem, loo
kar kara to kennen'g lem
to. Yeen mba to ndo
ge dje kom ge sö.



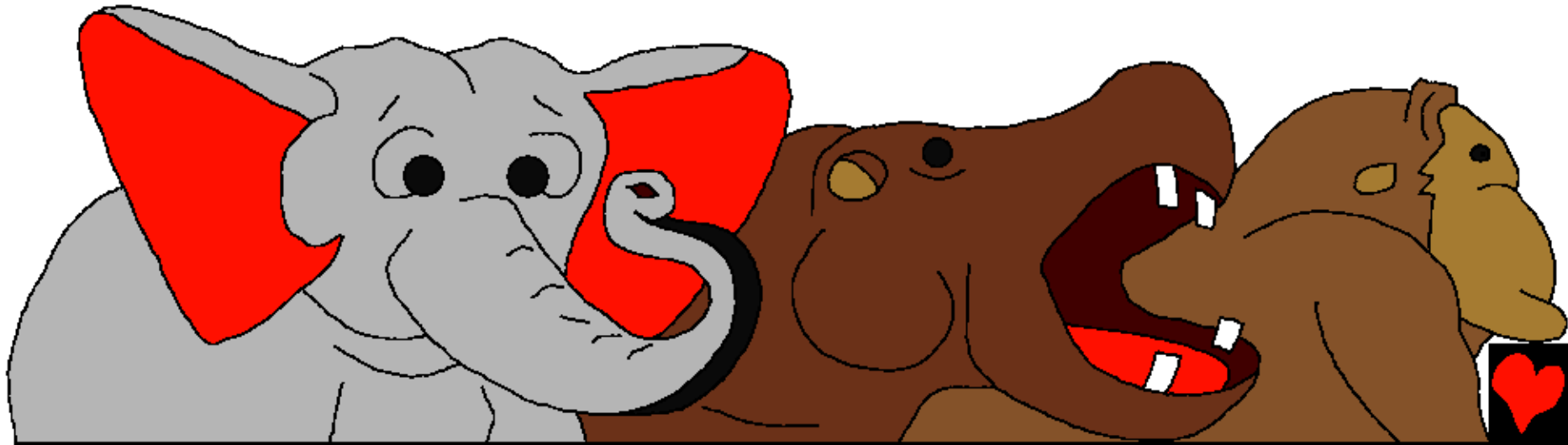
Ne kundaje ge dan
mann'g, kanjije lem
ge yelje lem to. Deen
bba to né kundaje
le Allah. Ndo dje
kom ge mi yeen unda
mannje ge boi boi
lem ge deen ge
lam lam lem to.



Yeen unda yelje lai
ge bag dee ge bell
dee lem to. Loo kar
kara to kennen'g
lem ge loo ndul kara
to kennen'g lem to.
Yeen bba to ndo ge
dje kom ge mi.



Gee ge gogo Allah pana, maji kar nang né
teen ge né kundaje ge daou kem bba ge
geldee geldee, da kulje lem ge daje dag
nang ge ta meendee lem ge daje ge daou
nang né ge geldee geldee lem to. Kerje
ge to bel lem, bedje lem, ndo ge né lee
Allah Unda néje lai.



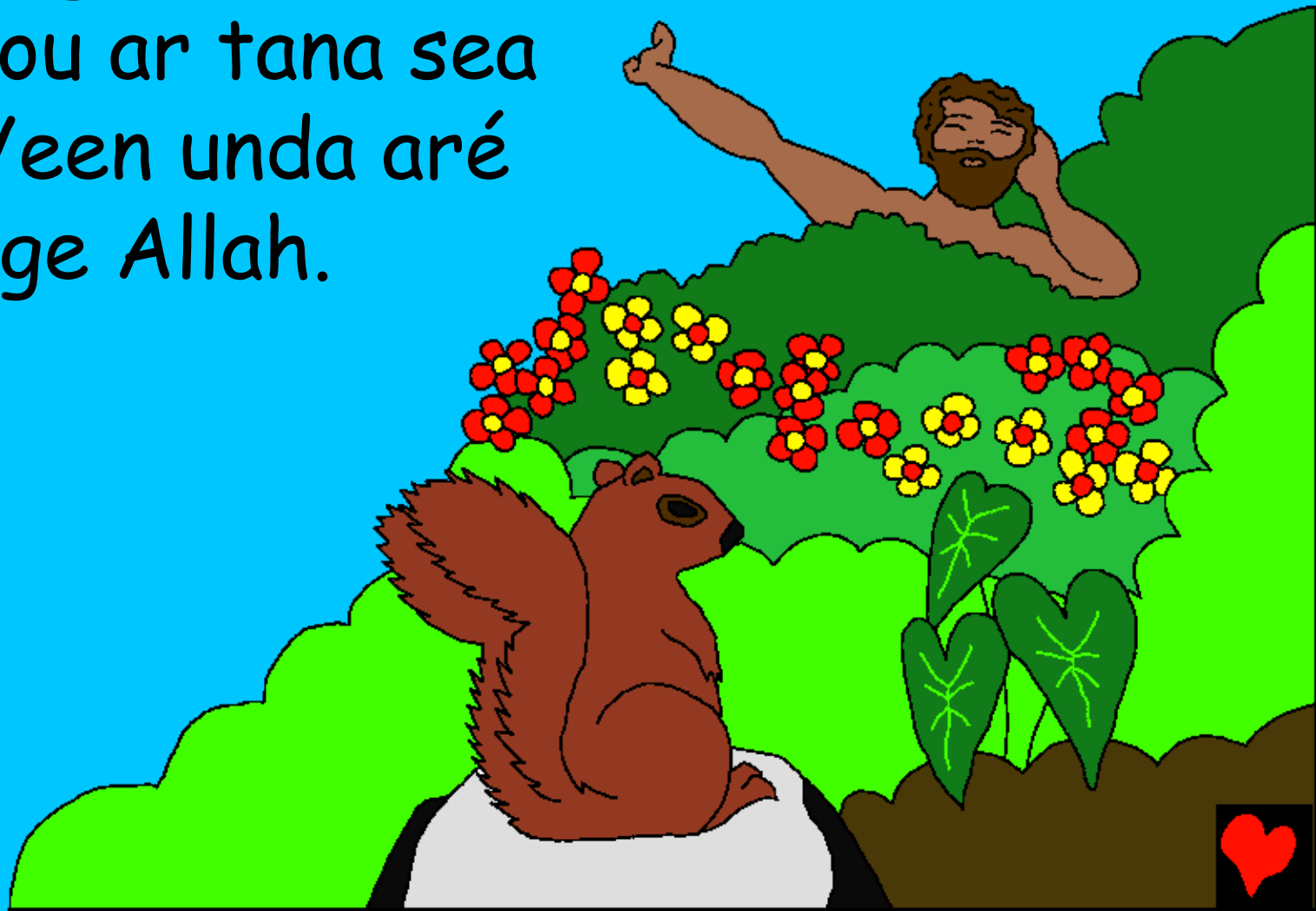
Loo kar kara to kennen'g lem, loo
ndul kara to kennen'g lem to. To
ndo ge dje kom misan.



Ndo ge dje kom ge misan Allah Unda ne
ge rang ya to bei, né ge to kemee bed,
néje lai to maji mbata le deou, nékousa
kara to mee ndö ge
lem, daje kara to
genn mba la né ge
deou lem to.



Allah pana arci n'raje deou daré tana
see ci paipai mba karé to mbai do néje
lai ge nang né. Allah
unda deou ar tana sea
paipai. Yeen unda aré
to tana ge Allah.



Allah ula Adam
pana, kagje lai ge
me ndö ge neelé i
as kem so kand
dee to ge mee
ndigi, nê kag ge woji
do ger né ge maji
esé né majel le i a so
kandee el mbata mee
ndea ge i a so kandee
nda i a kwei.



Mjeshiqenean Allah to maji mba kar
deou shi ge karé el, m'a ra ndjela
sea ge a to tana sea bbe to.

Njeshiqenean ree ge yelje
ge daje lai ge yeen unda
neelé ro Adam'g.



Adam unda ri dee kara kara lai, yeen
to deou ge ger né yan bba ra to ge
bbe né dann yelje ge lai ge
daje lai lé Adam inga ndjela
sea ge tana sea bbe el.



Allah ar bi ge doum koun rô bbidi tol
deou neelé aré to ge bi pereg. Yeen
or singa sengere karee
kara nda unda denné.
Denné Allah unda
lé to maji mbata
le Adam ya.



Allah unda néje lai ge ndo ge misa.
Tobei yeen tordia do ndo ge
nje kem ge siri aree to ndo kwa
ro. Allah to njeshiqenean lee
de lem, nje kardee nee lem
ge kuramzrdee lem to.



Loo ge Allah Unda Néje Lai

Surta'g wodji dö Allah, maktub'g to ge Kemee

kinga mee

Gi-Néje 1-2

"Taje lei ge dogo."
Pakosje 119:130



Tol Tea



Surta ge to mee maktub'g to ge kemee bed neelé ula ci ta ge woji do Allah'g njemeenmadji ge yeen unda ci lem, ge ndigi kar i geree lem to.

Allah ger to ge njen ra nemajelje yaan, yeen bba yeen baree kaiya. Né kunga doji kaiya le to yo. Né Allah ndigi ci yan bba ula ngonné ged-ged kara bba, Jesu wei kar kag des'g mbata kaiyaje. Tobei, Jesu tel shi khem bba lem, yeen aou dara lem to. To ge i om mei do Jesu'g bba i deje bba kar mee oso lemssé daa yeen a rané yaa. Yeen a ree shi mei'g lem i kara shi sea nand sar-sar'g non ya.



Bolé i om mei do'g to ge to ta ge togero nda, i pata né : Mbai Jesu, m'ger to ge i to Allah, tel roi deou sar wei né mbata kaiyaje lem, tel shi khem bba lem to. Kogero ya, m'ya shi khemba lem mee ji'g, ar mei oso lemssé do kaiyaje'g lem, bba kar'm tel pa jea lem cigi lem, ndo kara ma kaskem shi sei nand sar-sar'g non. Lassem bba kar'm m'illa ngonni koji doi'g lem, bba kar'm shi kembba mbata lei to'g ngonni. Amen.

Turaje maktub'g to ge Keme bed lem, ojije ta'g Allah ndoje kara kara lai lem. Ja 3:16

