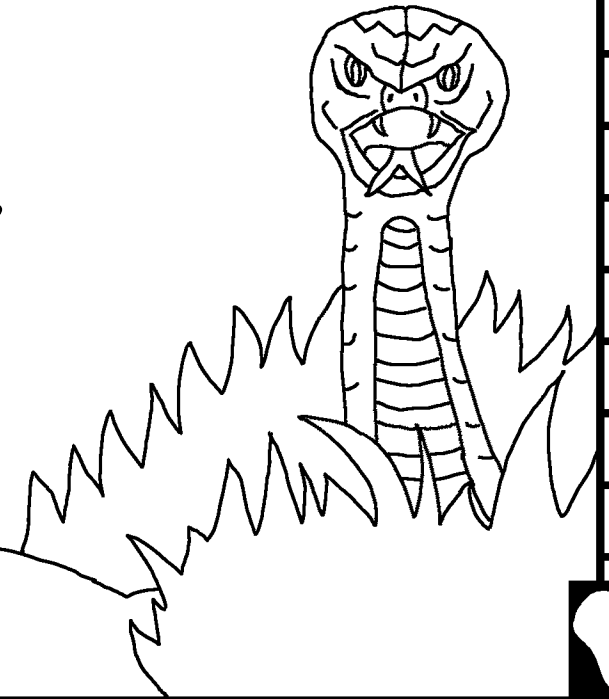


Maktub'g to ge Kemeé Mbata Ngannje
baciné

Kunda Ginne
Nékemndo ge
Teen do Deou Ge



Ddjéndangué: Edward Hughes

Djétumguiné: Byron Unger; Lazarus
Alastair Paterson

Djéria: M. Maillot; Tammy S.

Djetelguiné: www.christian-translation.com

Djerea: Bible for Children
www.M1914.org

©2023 Bible for Children, Inc.
A kasje kem kunja, maktub nélé Lal gad.



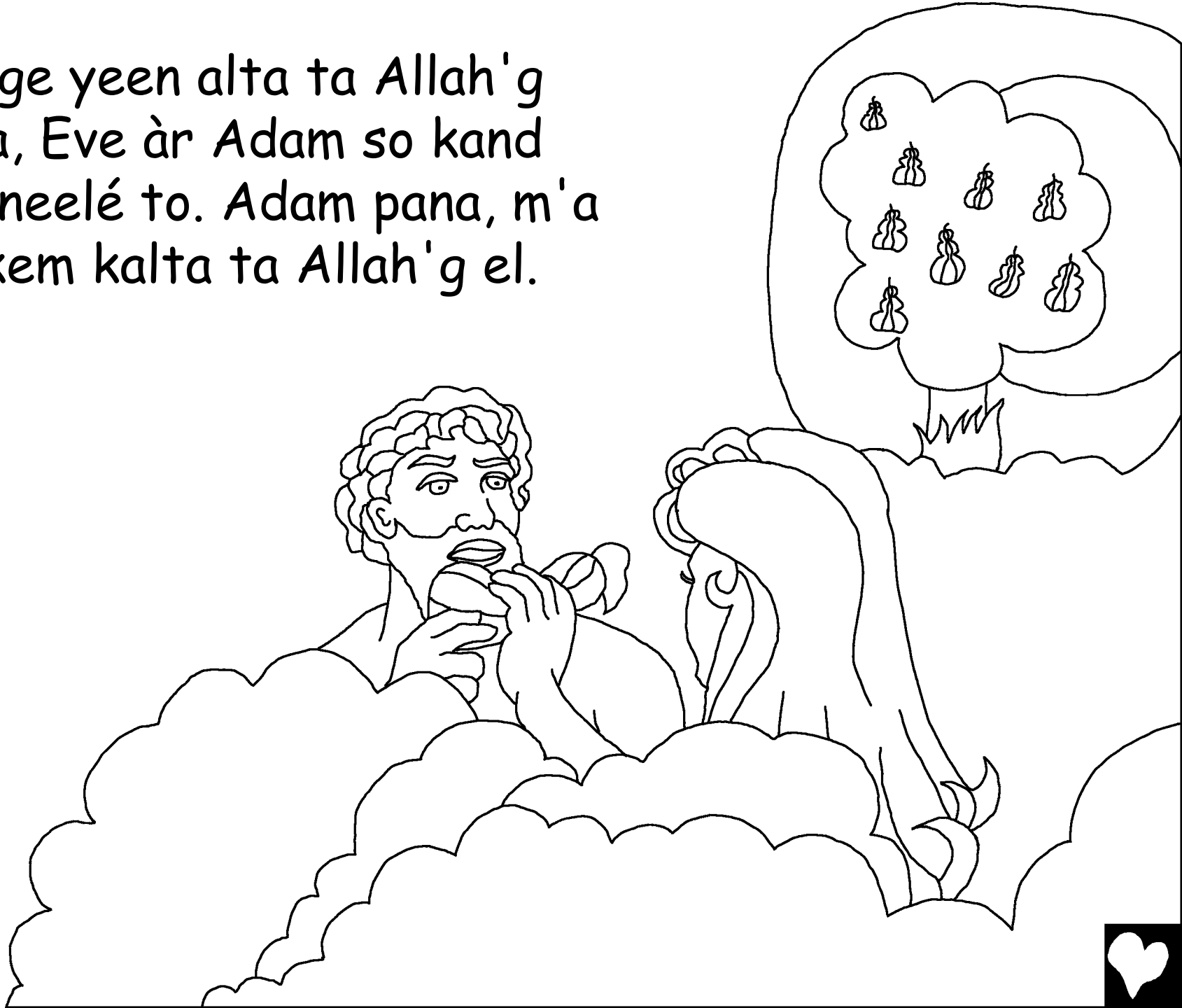
Allah ra neje lai loo ge Allah ra
deou ge dotar, Adam yeen neele shi
mee ndö Eden ge denné lea Eve. Rodé
lel dee yaan mbata killa koji do Allah
ge lem, ndilé dann dee
ge lem to sar bogené ya.



Allah pana, i a so
kand kagje lai ge to
mee ndö ge le'el. Li
deeji Eve bbe. J'askem
so kand kagje ge mee ndö ge le ya,
né kag ge aar dann ndö ge dana
bab le Allah pana j'a so kandee
ndan el lem j'a korô rea
ge jici peb ndan el lem
to nà j'a kwei. I a kwei
el, li lé ula dené lé bbe. I a
to kasnan ge Allah bbe. Eve
oo kand kag lee taakemee
reg, yeen oo talé li ndaa
yeen so kand kag neele.



Loo ge yeen alta ta Allah'g
ndaa, Eve àr Adam so kand
kag neelé to. Adam pana, m'a
kaskem kalta ta Allah'g el.





Loo ge Adam g Eve raa kaiya khem
dee inja ar dee ger to ge d'ar ge ro dee kari
bba, deen nduji kam kag bba d'unn nee rodee
tobei deen dia rodee bba kar Allah oo dee el.



Do lel ge losolo, Allah ree mee ndö,
yeen ger ne ge Adam ge Eve ra le.
Adam illa ta do Eve'g, Eve illa ta
do li'g. Allah pana, li le ndol wa déa,
i denné a koji ngonnn meekon. Adam
mbata i ra kaiya, donang lé ndol wa
dea ge kunnje ge garje. I a kuja
tédee bur bba a kinga né soi.



Allah tuba Adam ge Eve
mee ndö'g, mbata deen
ra kaiya, deen dunda
ridee bed ge Allah.





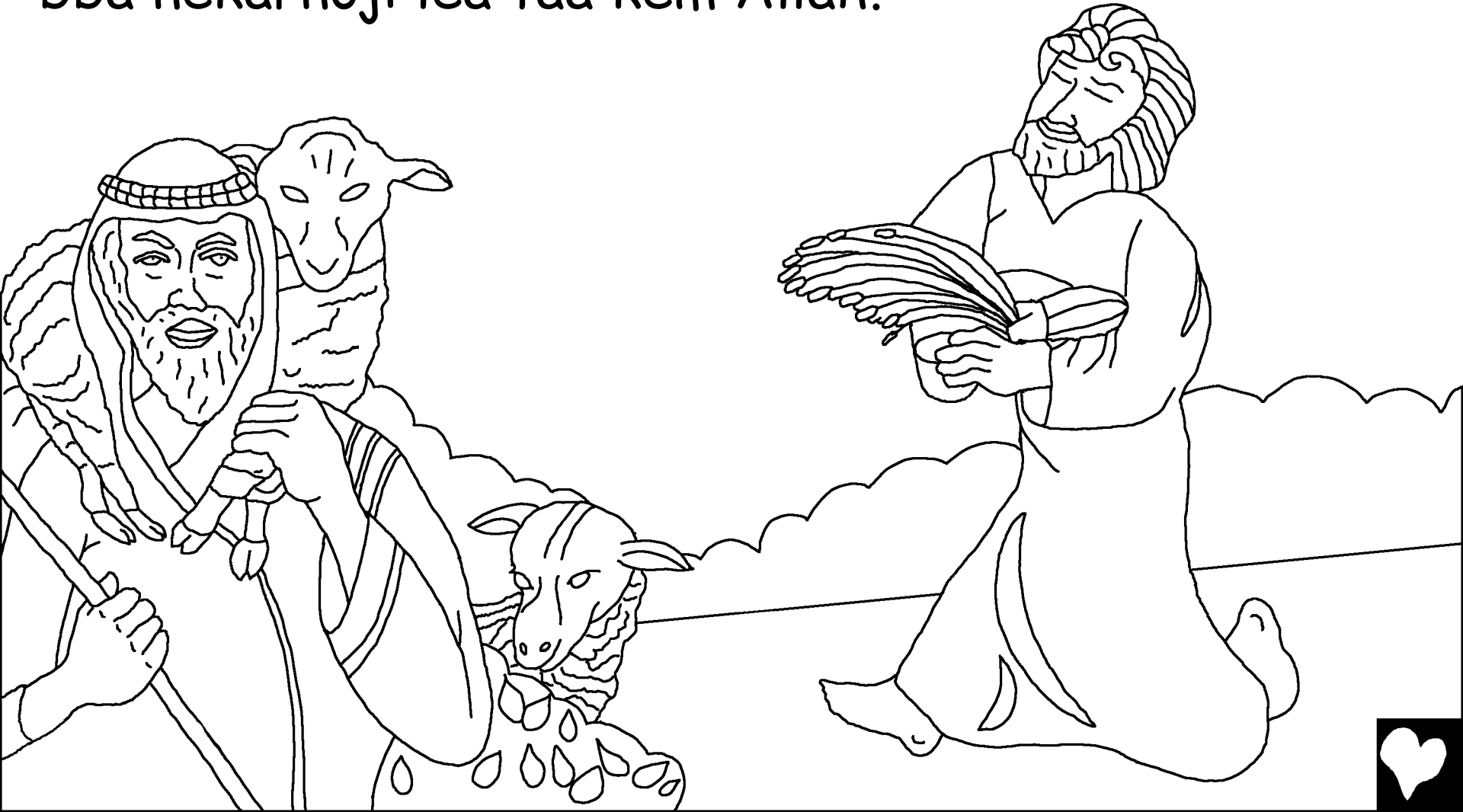
Allah ra kia bass bba kogdee
nee kand mee ndö'g neelé,
yeen tö ndar da bba ra né
kubu ar Adam ge Eve.



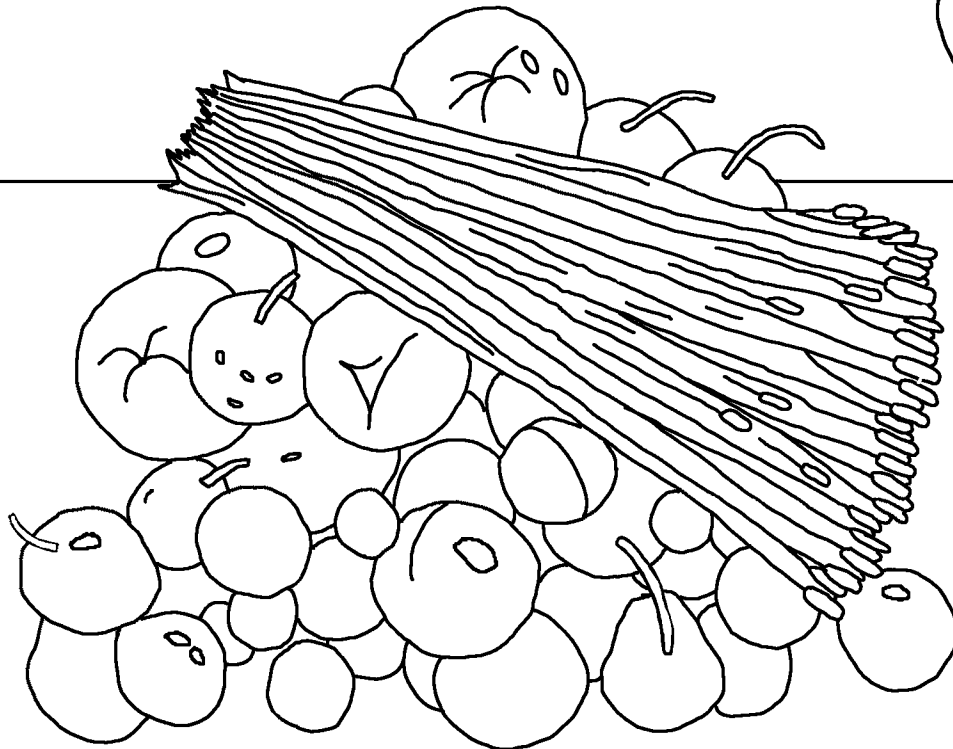
Ndoje dess, Adam ge Eve dojinan. Ngonn dee ge dotar ria le cain yeen to nje ndö, ri ngonn dee ge njekom ge djo lé to Abel, yeen to nje kul badje.



Ndö kara bbe, Cain unn kand néje ge mee ndö'g lea ge nékarnoji ar Allah. Abel kara ree ge ngann der nékulje'g mbuna nékulje'g lea ge ubu dee to. Abel bba nékarnoji lea taa kem Allah.



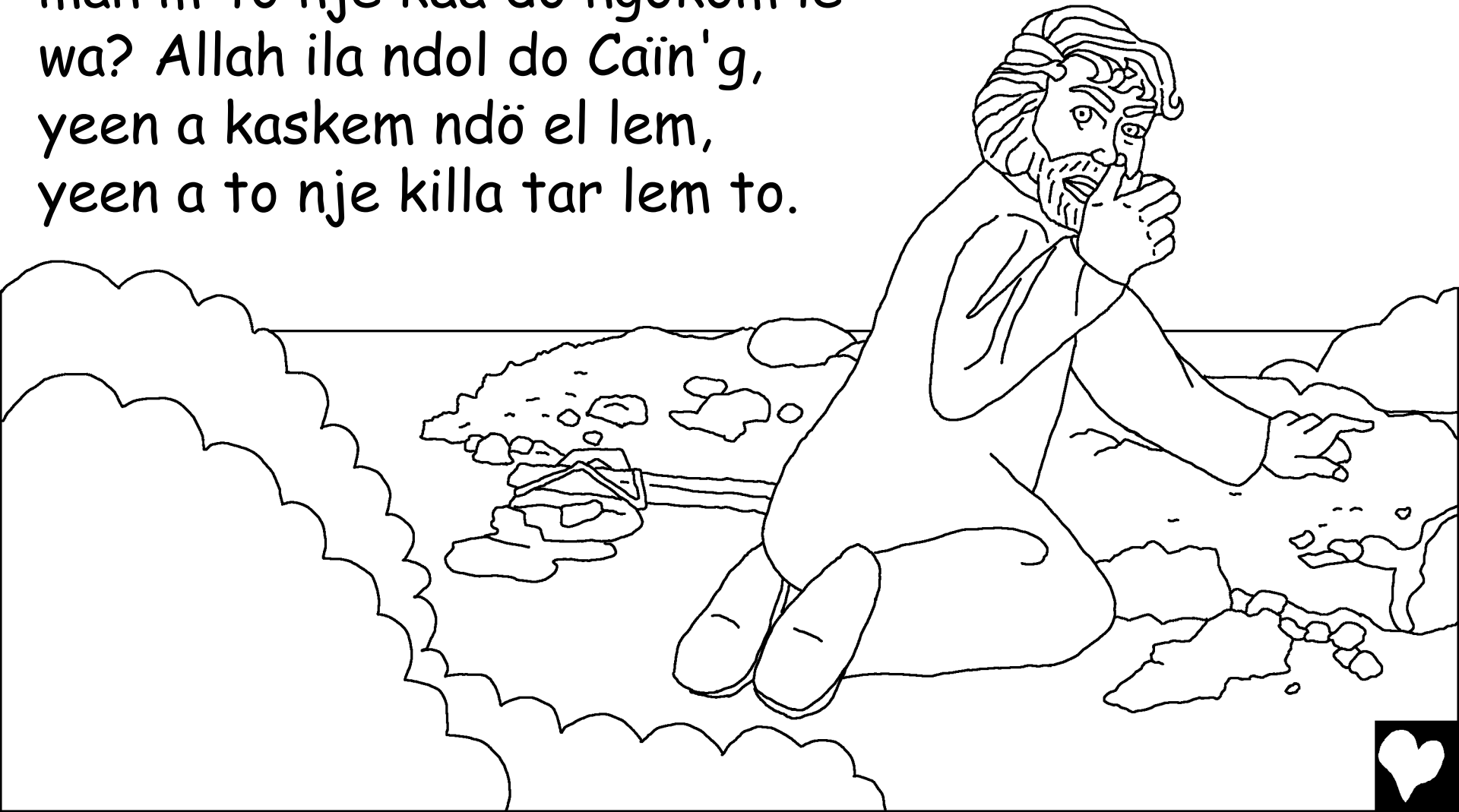
Né Allah rea nelee do nékarnoji
le Cain le el. Mee cain in sea pu.
Allah pana: Se ra nejee ge maji le,
nekarnoji lei le da taa el bba wa?



Cain le yan meekon le el
aree tol Abel to mee ndo'g.



Allah deji cain pana see ngokoin
Abel aar rawa? M'am ger el
Cain tel ila kennen'g bbe. See
man m'to nje kaa do ngokom le
wa? Allah ila ndol do Cain'g,
yeen a kaskem ndö el lem,
yeen a to nje killa tar lem to.



Cain sa rea aou eou kem njeshiqenean'g
nda yeen taa denné ngonnn lé Adam'g Eve.
Deen d'unnda gel noji lee dee.
Waga nda, ga ka Cain ge ga ka dogé
rusu donang qe yeen tum ginné.



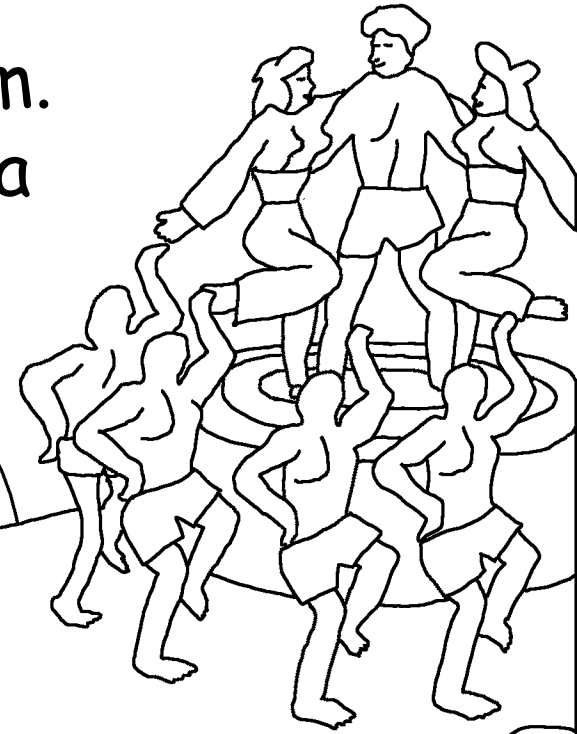
Do kurloo ge neelé Adam ge Eve
doji ngannje kemdee kedé. Do
kurloo ge neelé leb deouje ain
bula bad bba dwei bei.



Loo ge doji ngonnn dee seth, Eve
pana Allah am seth karé ta tor
Abel. Seth shi kheme bba as bal
912 tobei aou ge gannje yann to.



Mee ndul unn kudu taa donnang.
Gelee ge nee bba digi tuji
deouje daje lem ge yelje lem.
Allah non rea mbata ra ge ra
deou. Né deou kara
ta kem Allah.



Deou neelé to Noé, ginnkoji'g le Seth, Noé to deou ge nje ra ne ge dana. Yeen jea ge Allah lea nand lem to. Yeen ndô ngannéje ge mounda lookilakoji do Allah'g lem.

Allah ndigi kunn Noé baa ra né kula.

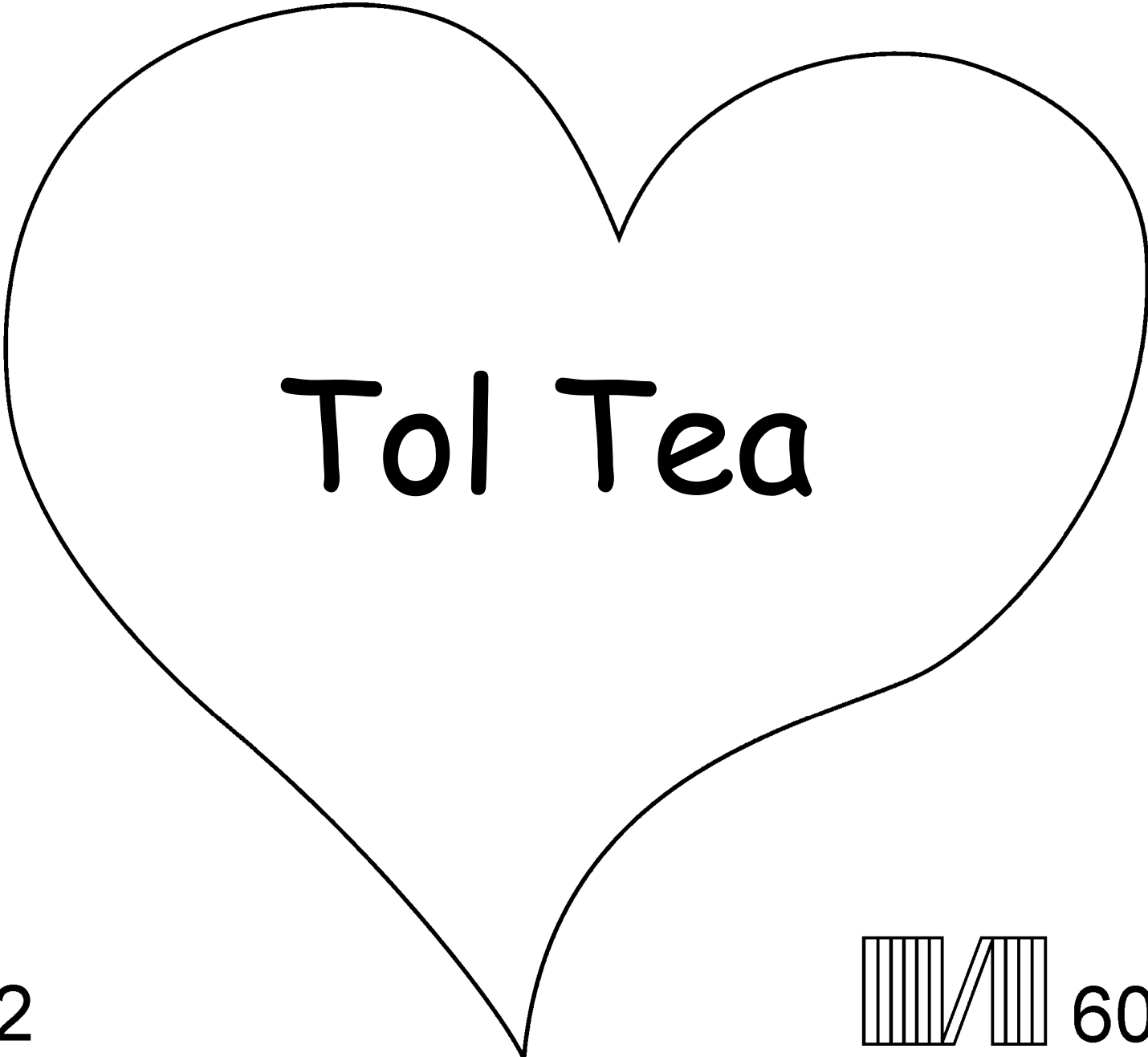


Kunda Ginne Nékemndo ge Teen do Deou Ge
Surta'g wodji dö Allah, maktub'g to ge Kemee
kinga mee

Gi-Néje 3-6

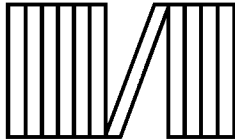
"Taje lei ge dogo."
Pakosje 119:130





Tol Tea

2



60



Surta ge to mee maktub'g to ge kemee bed neelé
ula ci ta ge woji do Allah'g njemeenmadji ge
yeen unda ci lem, ge ndigi kar i geree lem to.

Allah ger to ge njen ra nemajelje yaan, yeen bba yeen baree kaiya.
Né kunga doji kaiya le to yo. Né Allah ndigi ci yan bba
ula ngonné ged-ged kara bba, Jesu wei kar kag des'g mbata
kaiyaje. Tobei, Jesu tel shi khem bba lem, yeen aou dara lem
to. To ge i om mei do Jesu'g bba i deje bba kar mee oso
lemssé daa yeen a rané yaa. Yeen a ree shi mei'g lem
i kara shi sea nand sar-sar'g non ya.

Bolé i om mei do'g to ge to ta ge togero nda, i pata né : Mbaï
Jesu, m'ger to ge i to Allah, tel roi deou sar wei né mbata kaiyaje
lem, tel shi khem bba lem to. Kogero ya, m'ya shi khemba lem mee
ji'g, ar mei oso lemssé do kaiyaje'g lem, bba kar'm tel pa jea lem
cigi lem, ndo kara ma kaskem shi sei nand sar-sar'g non. Lassem
bba kar'm m'illa ngonni koji doi'g lem, bba kar'm shi kembba
mbata lei to'g ngonni. Amen.

Turaje maktub'g to ge Kemee bed lem, ojije ta'g
Allah ndoje kara kara lai lem. Ja 3:16

