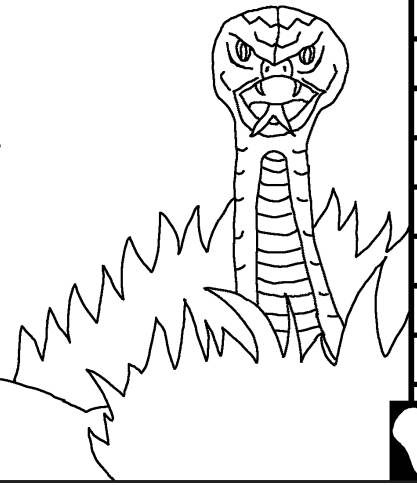


Maktub'g to ge Keme Mbata Ngannje  
baciné

Kunda Ginne  
Nékemndo ge  
Teen do Deou Ge



Djéndangué: Edward Hughes

Djétumguiné: Byron Unger; Lazarus  
Alastair Paterson

Djéria: M. Maillot; Tammy S.

Djetelguiné: [www.christian-translation.com](http://www.christian-translation.com)

Djerea: Bible for Children  
[www.M1914.org](http://www.M1914.org)

©2023 Bible for Children, Inc.  
A kasje kem kunja, maktub nélé Lal gad.

Allah ra neje lai loo ge Allah ra  
deou ge dotar, Adam yeen neele shi  
mee ndö Eden ge denné lea Eve. Rodé  
lel dee yaan mbata killa koji do Allah  
ge lem, ndilé dann dee  
ge lem to sar bogené ya.



Allah pana, i a so  
kand kagje lai ge to  
mee ndö ge le'el. Li  
deegi Eve bbe. J'askem  
so kand kagje ge mee ndö ge le ya,  
né kag ge aar dann ndö ge dana  
bab le Allah pana j'a so kandee  
ndan el lem j'a korô rea  
ge jici peb ndan el lem  
to na j'a kwei. I a kwei  
el, li lé ula dené lé bbe. I a  
to kasnan ge Allah bbe. Eve  
oo kand kag lee taakemee  
reg, yeen oo talé li ndaa  
yeen so kand kag neele.

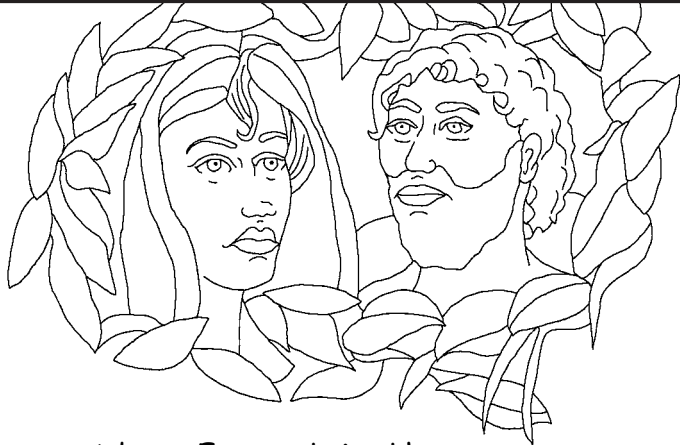


3

Loo ge yeen alta ta Allah'g  
ndaa, Eve ar Adam so kand  
kag neelé to. Adam pana, m'a  
kaskem kalta ta Allah'g el.



4



Loo ge Adam g Eve raa kaiya khem  
deeinja ar dee ger to ge d'ar ge ro dee kari  
bba, deen nduji kam kag bba d'unn nee rodee  
tobei deen dia rodee bba kar Allah oo dee el.

5

Do lel ge losolo, Allah ree mee ndö,  
yeen ger ne ge Adam ge Eve ra le.  
Adam illa ta do Eve'g, Eve illa ta  
do li'g. Allah pana, li le ndol wa déa,  
i denné a koji ngonn meekon. Adam  
mbata i ra kaiya, donang lé ndol wa  
dea ge kunnje ge garje. I a kuja  
tédee bur bba a kinga né soi.



6

Allah tuba Adam ge Eve  
mee ndö'g, mbata deen  
ra kaiya, deen dunda  
ridee bed ge Allah.



7

Allah ra kia bass bba kogdee  
nee kand mee ndö'g neelé,  
yeen tö ndar da bba ra né  
kubu ar Adam ge Eve.



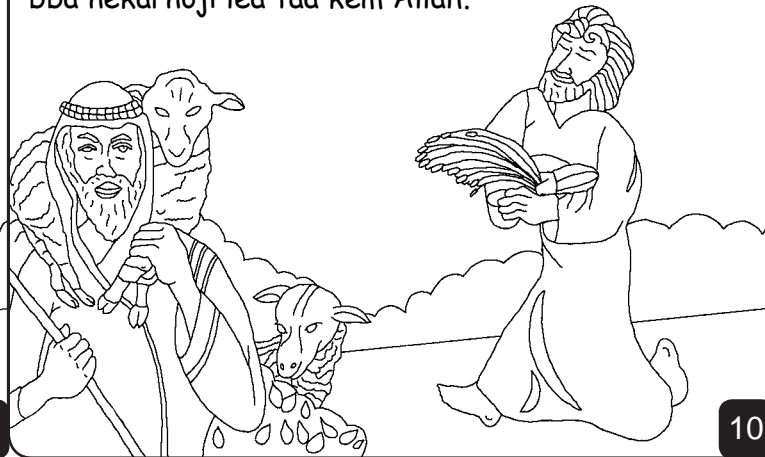
8

Ndoje dess, Adam ge Eve dojinan. Ngonn dee ge dotar ria le cain yeen to nje ndö, ri ngonn dee ge njekom ge djo lé to Abel, yeen to nje kul badje.



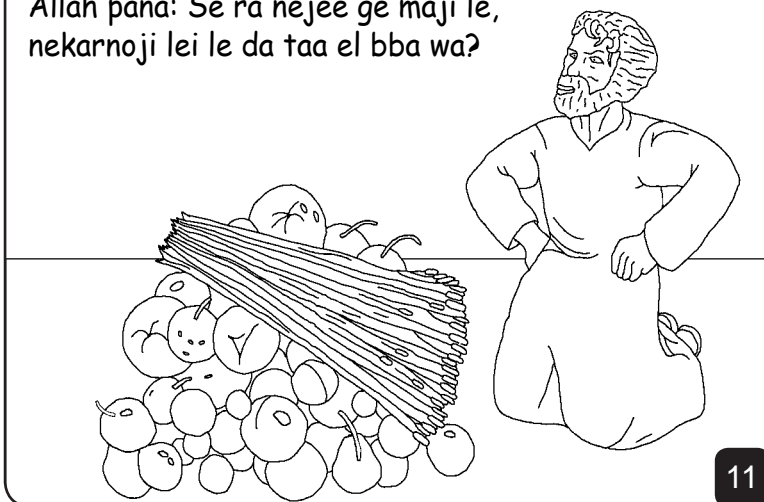
9

Ndö kara bbe, Cain unn kand néje ge mee ndö'g lea ge nékarnoji ar Allah. Abel kara ree ge ngann der nékulje'g mbuna nékulje'g lea ge ubu dee to. Abel bba nékarnoji lea taa kem Allah.



10

Né Allah rea nelee do nékarnoji le Cain le el. Mee cain in sea pu. Allah pana: Se ra nejee ge maji le, nekarnoji lei le da taa el bba wa?



11

Cain le yan meekon le el aree tol Abel to mee ndö'g.



12

Allah deji cain pana see ngokoin Abel aar rawa? M'am ger el Cain tel ila kennen'g bbe. See man m'to nje kaa do ngokom le wa? Allah ila ndol do Cain'g, yeen a kaskem ndö el lem, yeen a to nje killa tar lem to.



13

Cain sa rea aou eou kem njeshiqenean'g nda yeen taa denné ngonn lé Adam'g Eve. Deen d'unnda gel noji lee dee. Waga nda, ga ka Cain ge ga ka dogé rusu donang ge yeen tum ginné.



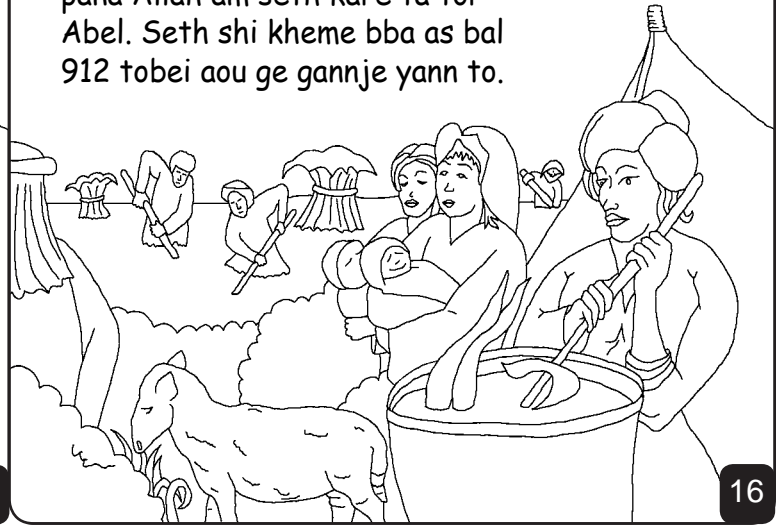
14

Do kurloo ge neelé Adam ge Eve doji ngannje kemdee kedé. Do kurloo ge neelé leb deouje ain bula bad bba dwei bei.



15

Loo ge doji ngonn dee seth, Eve pana Allah am seth karé ta tor Abel. Seth shi kheme bba as bal 912 tobei aou ge gannje yann to.



16

Mee ndul unn kudu taa donnang. Gelee ge nee bba digi tuji deouje daje lem ge yelje lem. Allah non rea mbata ra ge ra deou. Né deou kara ta kem Allah.



17

Deou neelé to Noé, ginnkoji'g le Seth, Noé to deou ge nje ra ne ge dana. Yeen jea ge Allah lea nand lem to. Yeen ndô ngannéje ge mounda lookilakoji do Allah'g lem.

Allah ndigi kunn Noé baa ra né kula.



18

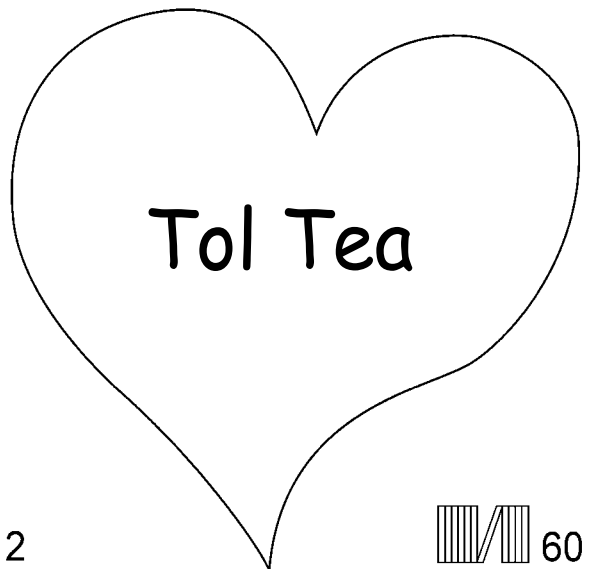
Kunda Ginne Nékemndo ge Teen do Deou Ge Surta'g wodji dö Allah, maktub'g to ge Kemee

kinga mee

Gi-Néje 3-6

"Taje lei ge dogo."  
Pakosje 119:130

19



2

60

20

Surta ge to mee maktub'g to ge keme bed neelé  
ula ci ta ge woji do Allah'g njemeenmadji ge  
yeen unda ci lem, ge ndigi kar i geree lem to.

Allah ger to ge njen ra nemajelje yaan, yeen bba yeen baree kaiya.

Né kunga doji kaiya le to yo. Né Allah ndigi ci yan bba  
ula ngonné ged-ged kara bba, Jesu wei kar kag des'g mbata  
kaiyaje. Tobei, Jesu tel shi khem bba lem, yeen aou dara lem  
to. To ge i om mei do Jesu'g bba i deje bba kar mee oso  
lemssé daa yeen a rané yaa. Yeen a ree shi mei'g lem  
i kara shi sea nand sar-sar'g non ya.

Bolé i om mei do'g to ge to ta ge togero nda, i pata né : Mbaï  
Jesu, m'ger to ge i to Allah, tel roï deou sar wei né mbata kaiyaje  
lem, tel shi khem bba lem to. Kogero ya, m'ya shi khemba lem mee  
ji'g, ar mei oso lemssé do kaiyaje'g lem, bba kar'm tel pa jea lem  
cigi lem, ndo kara ma kaskem shi sei nand sar-sar'g non. Lasse  
bba kar'm m'illa ngonn koji doi'g lem, bba kar'm shi kembba  
mbata lei to'g ngonni. Amen.

Tura je maktub'g to ge Keme bed lem, oji je ta'g  
Allah ndo je kara kara lai lem. Ja 3:16