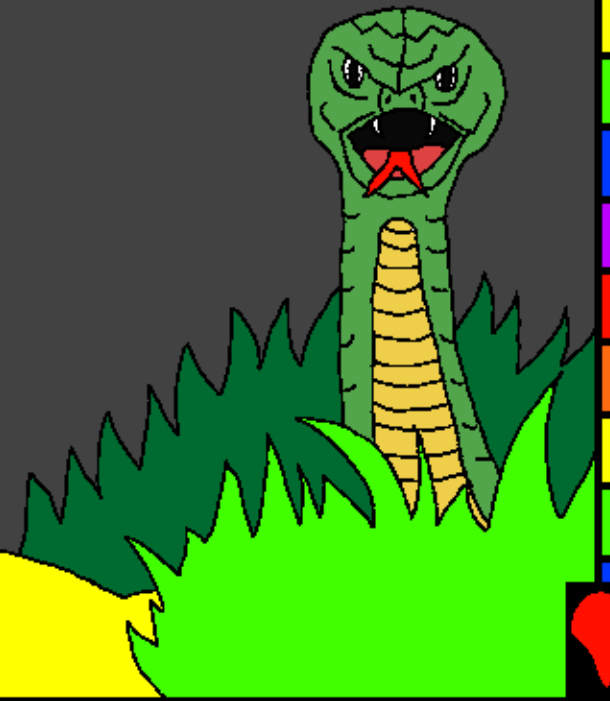


Maktub'g to ge Kemeé Mbata Ngannje
baciné

Kunda Ginne
Nékemndo ge
Teen do Deou Ge



Ddjéndangué: Edward Hughes

Djétumguiné: Byron Unger; Lazarus
Alastair Paterson

Djéria: M. Maillot; Tammy S.

Djetelguiné: www.christian-translation.com

Djerea: Bible for Children
www.M1914.org

©2023 Bible for Children, Inc.
A kasje kem kunja, maktub nélé Lal gad.



Allah ra neje lai loo ge Allah
ra deou ge dotar, Adam yeen
neele shi mee ndö Eden ge
denné lea Eve.



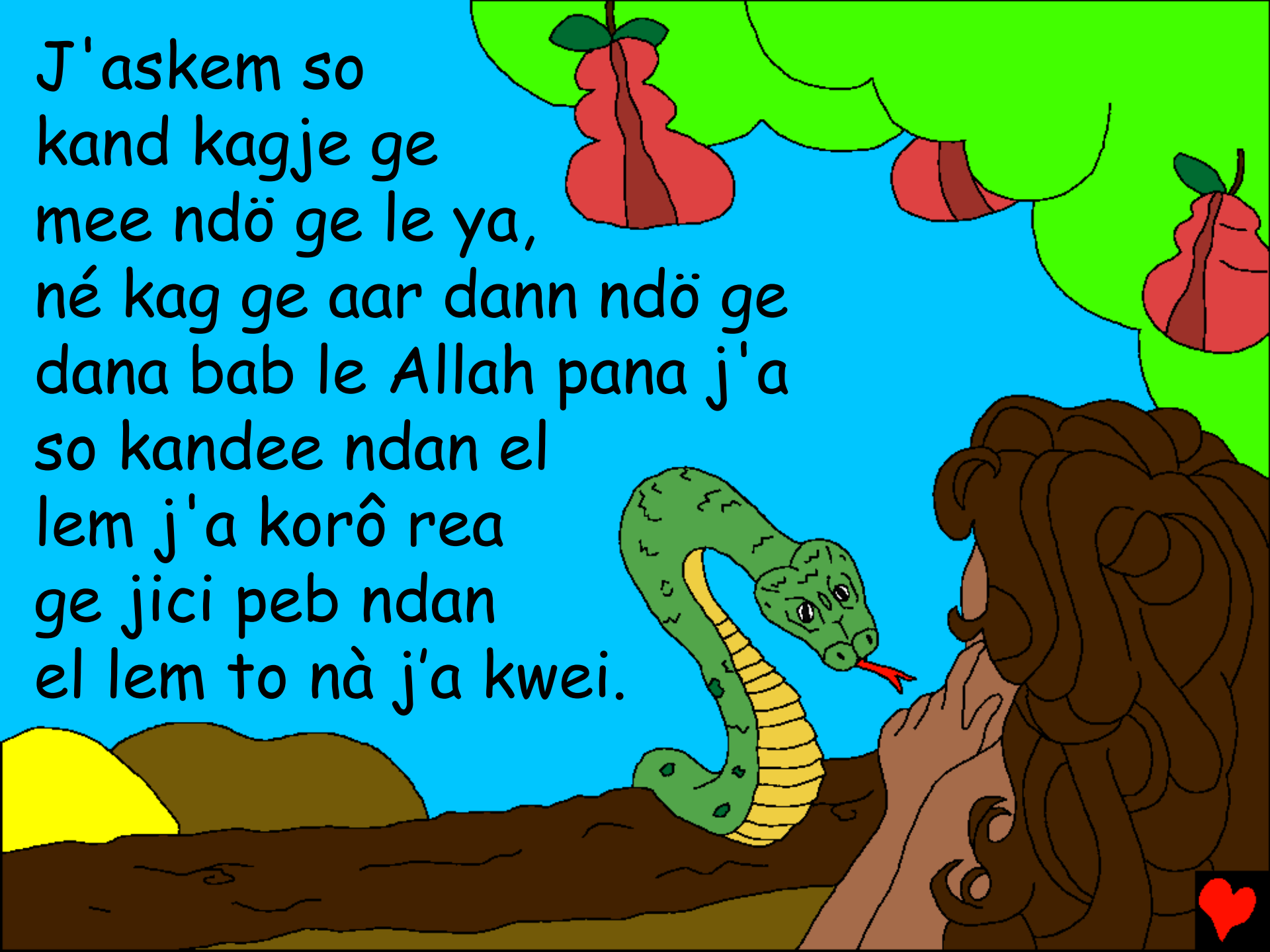
Rodé lel dee yaan mbata
killa koji do Allah ge lem,
ndilé dann dee ge lem to sar
bogené ya.



Allah pana, i a
so kand kagje lai
ge to mee ndö ge
le'el. Li deeji Eve bbe.



J'askem so
kand kagje ge
mee ndö ge le ya,
né kag ge aar dann ndö ge
dana bab le Allah pana j'a
so kandee ndan el
lem j'a korô rea
ge jici peb ndan
el lem to nà j'a kwei.



I a kwei el, li
lé ula dené lé bbe.
I a to kasnan ge
Allah bbe. Eve oo
kand kag lee taakemee
reg, yeen oo talé
li ndaa yeen so
kand kag neele.



Loo ge yeen alta ta Allah'g
ndaa, Eve àr Adam so kand
kag neelé to. Adam pana,
m'a kaskem kalta ta
Allah'g el.





Loo ge Adam
g Eve raa kaiya khem dee inja ar dee ger
to ge d'ar ge ro dee kari bba, deen nduji
kam kag bba d'unn nee rodee tobei deen
dia rodee bba kar Allah oo dee el.



Do lel ge losolo, Allah ree mee
ndö, yeen ger ne ge Adam ge
Eve ra le. Adam illa ta do Eve'g,
Eve illa ta do li'g. Allah pana,
li le ndol wa déa, i denné
a koji ngonnn meekon.



Adam mbata i ra kaiya, donang
lé ndol wa dea ge kunnje ge
garje. I a kuja tédee bur bba
a kinga né soi.



Allah tuba Adam ge Eve
mee ndö'g, mbata deen
ra kaiya, deen dunda
ridee bed ge Allah.





Allah ra kia bass bba
kogdee nee kand mee
ndö'g neelé, yeen tö
ndar da bba ra né kubu
ar Adam
ge Eve.



Ndoje dess, Adam ge Eve dojinan. Ngonn
dee ge dotar ria le cain yeen to nje ndö,
ri ngonn dee ge njekom ge
djo lé to Abel, yeen to nje
kul badje.

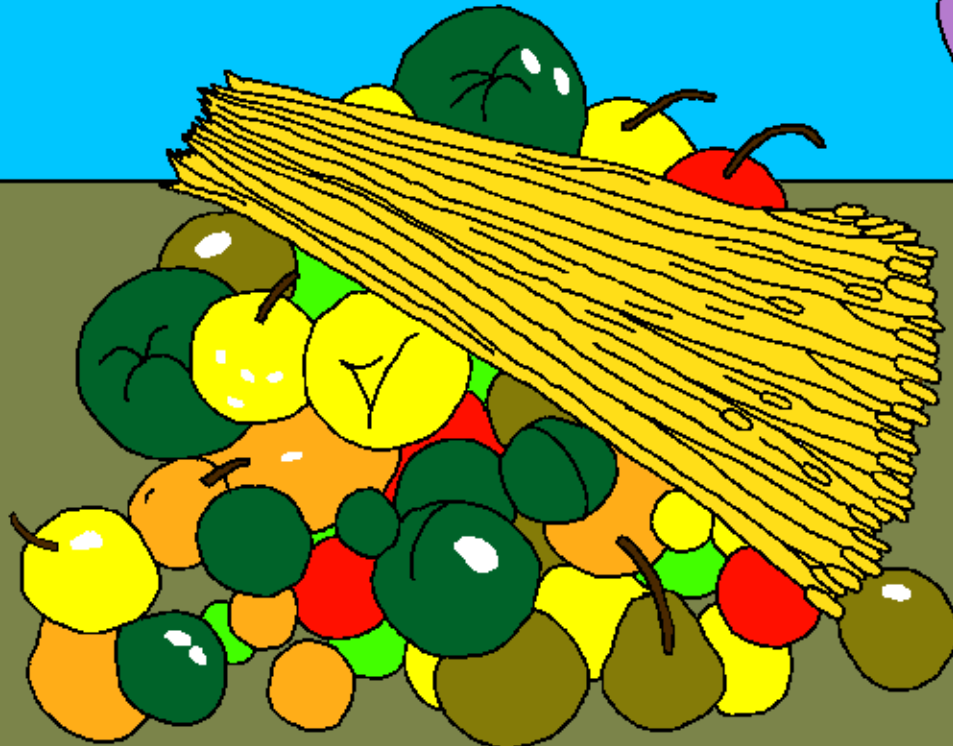


Ndö kara bbe, Cain unn kand néje ge mee
ndö'g lea ge nékarnoji ar Allah. Abel
kara ree ge ngann der nékulje'g mbuna
nékulje'g lea ge ubu dee to.

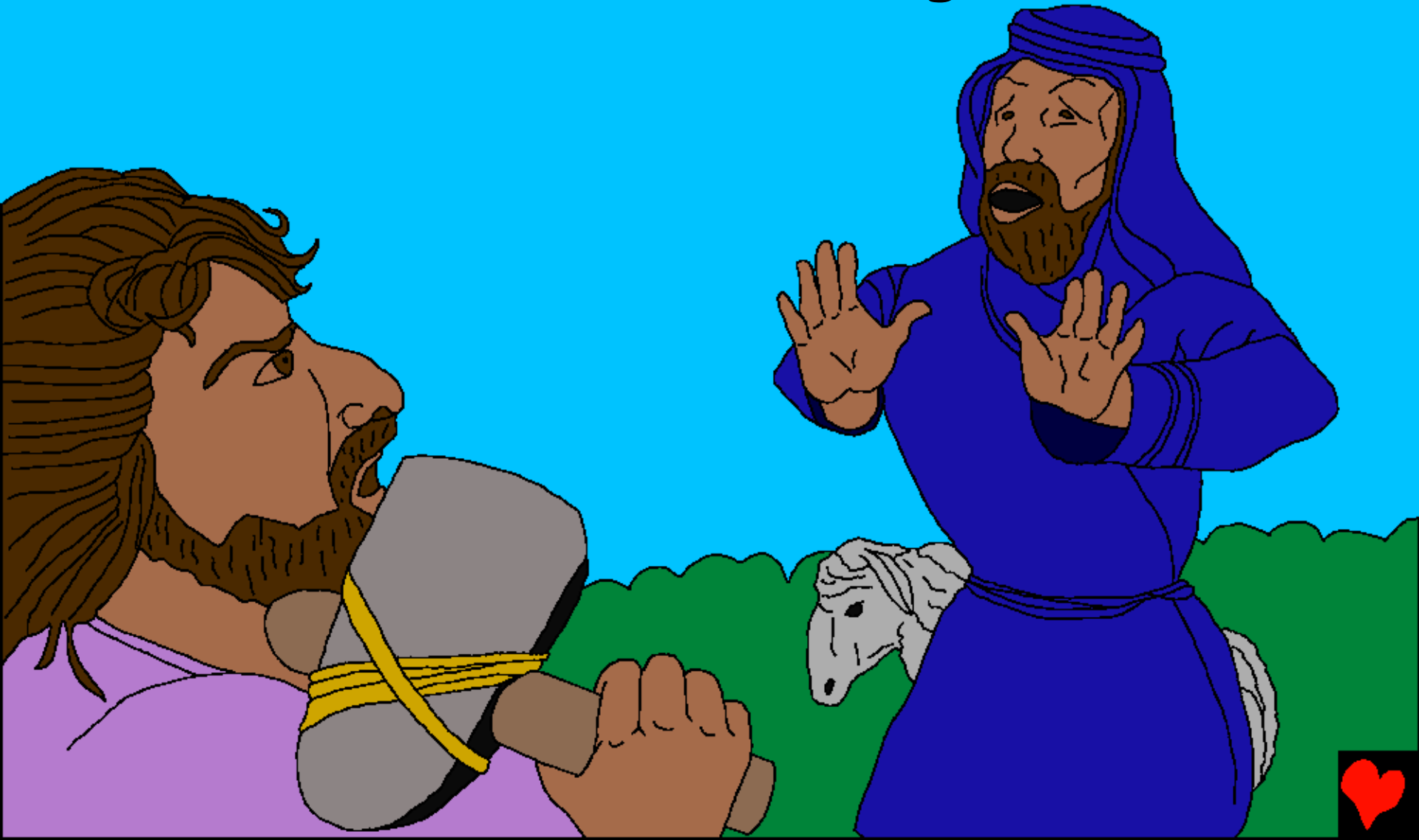
Abel bba
nékarnoji
lea taa
kem Allah.



Né Allah rea nelee do nékarnoji
le Cain le el. Mee cain in sea
pu. Allah pana: Se ra nejee
ge maji le, nekarnoji
lei le da taa el bba wa?



Cain le yan meekon le el
aree tol Abel to mee ndo'g.



Allah deji cain pana see ngokoin Abel aar rawa? M'am ger el Cain tel ila kennen'g bbe. See man m'to nje kaa do ngokom le wa? Allah ila ndol do Cain'g, yeen a kaskem ndö el lem, yeen a to nje killa tar lem to.



Cain sa rea aou eou kem njeshiqenean'g
nda yeen taa denné ngonnn lé Adam'g Eve.
Deen d'unnda gel noji lee dee.
Waga nda, ga ka Cain ge ga
ka dogé

rusu
donang qe
yeen tum ginné.



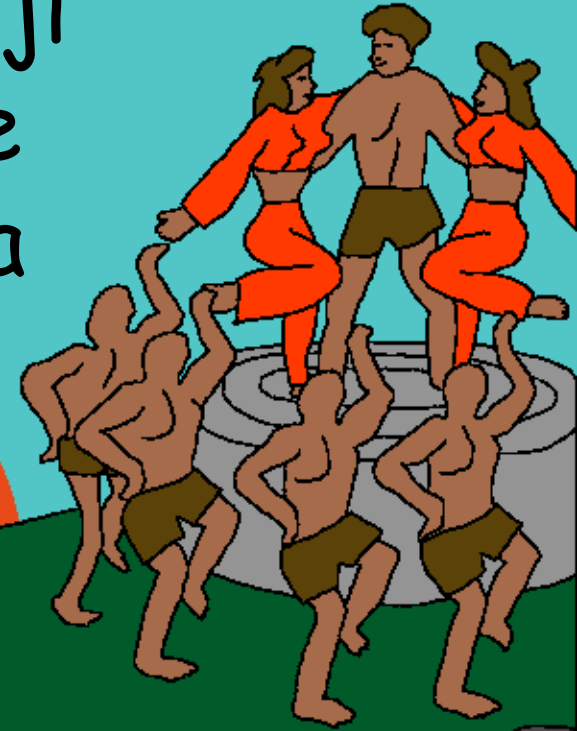
Do kurloo ge neelé Adam ge
Eve doji ngannje kemdee kedé.
Do kurloo ge neelé leb deouje
ain bula bad bba dwei bei.



Loo ge doji ngonn dee seth, Eve pana
Allah am seth karé ta tor Abel.
Seth shi kheme bba as bal 912
tobei aou ge gannje yann to.



Mee ndul unn kudu taa donnang.
Gelee ge nee bba digi tuji
deouje daje lem ge yelje
lem. Allah non rea mbata
ra ge ra deou.



Né deou
kara ta kem
Allah.



Deou neelé to Noé, ginnkoji'g le
Seth, Noé to deou ge nje ra ne
ge dana. Yeen jea ge Allah
lea nand lem to.



Yeen ndô ngannéje ge mounda
lookilakoji do Allah'g lem.
Allah ndigi kunn Noé baa
ra né kula.



Kunda Ginne Nékemndo ge Teen do Deou Ge
Surta'g wodji dö Allah, maktub'g to ge Kemee
kinga mee

Gi-Néje 3-6

"Taje lei ge dogo."
Pakosje 119:130



Tol Tea



Surta ge to mee maktub'g to ge kemee bed neelé ula ci ta ge woji do Allah'g njemeenmadji ge yeen unda ci lem, ge ndigi kar i geree lem to.

Allah ger to ge njen ra nemajelje yaan, yeen bba yeen baree kaiya. Né kunga doji kaiya le to yo. Né Allah ndigi ci yan bba ula ngonné ged-ged kara bba, Jesu wei kar kag des'g mbata kaiyaje. Tobei, Jesu tel shi khem bba lem, yeen aou dara lem to. To ge i om mei do Jesu'g bba i deje bba kar mee oso lemssé daa yeen a rané yaa. Yeen a ree shi mei'g lem i kara shi sea nand sar-sar'g non ya.



Bolé i om mei do'g to ge to ta ge togero nda, i pata né : Mbai Jesu, m'ger to ge i to Allah, tel roi deou sar wei né mbata kaiyaje lem, tel shi khem bba lem to. Kogero ya, m'ya shi khemba lem mee ji'g, ar mei oso lemssé do kaiyaje'g lem, bba kar'm tel pa jea lem cigi lem, ndo kara ma kaskem shi sei nand sar-sar'g non. Lassem bba kar'm m'illa ngonni koji doi'g lem, bba kar'm shi kembba mbata lei to'g ngonni. Amen.

Turaje maktub'g to ge Keme bed lem, ojije ta'g Allah ndoje kara kara lai lem. Ja 3:16

