

Maktub 'g to ge Kemeé Mbata Ngannje
baciné



Noé ge
Mann Bélm



Ddjéndangué: Edward Hughes

Djétumguiné: Byron Unger; Lazarus
Alastair Paterson

Djéria: M. Maillot; Tammy S.

Djetelguiné: www.christian-translation.com

Djerea: Bible for Children
www.M1914.org

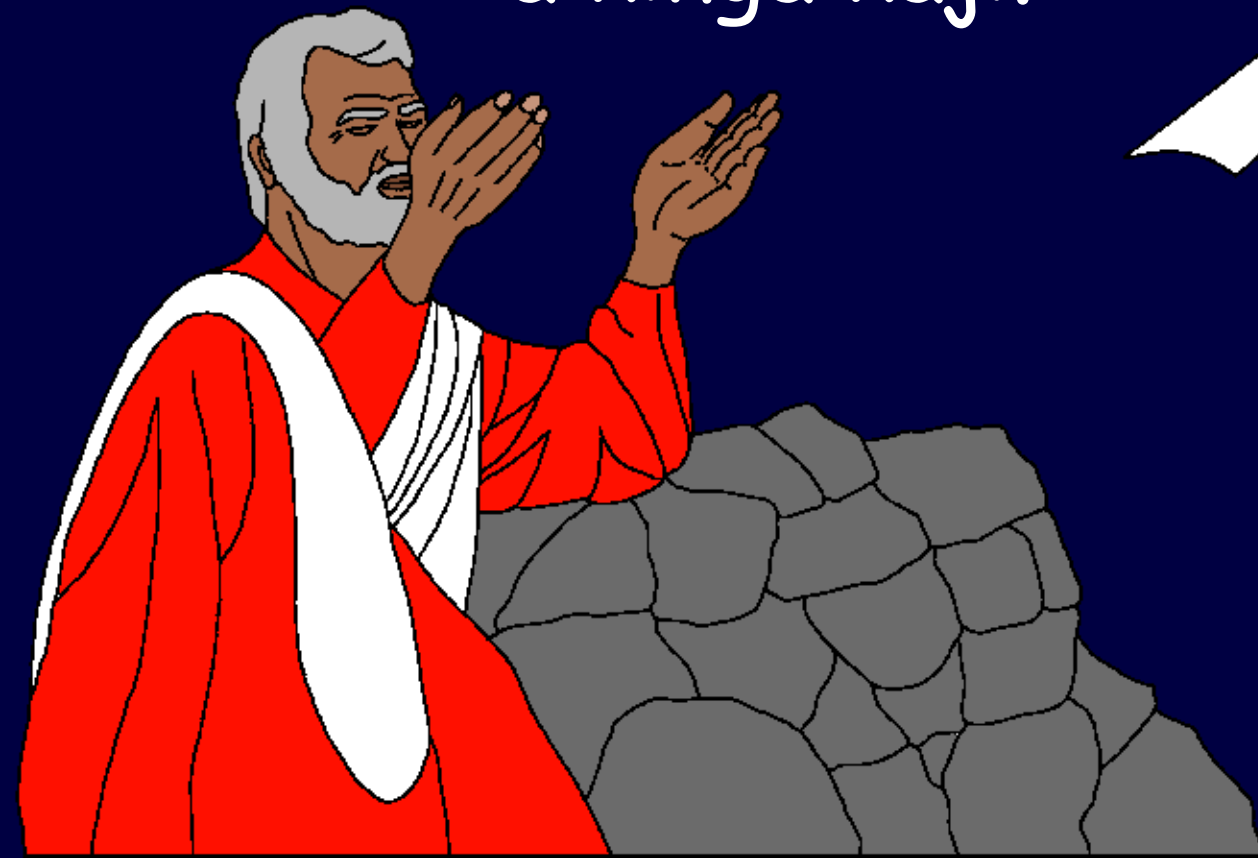
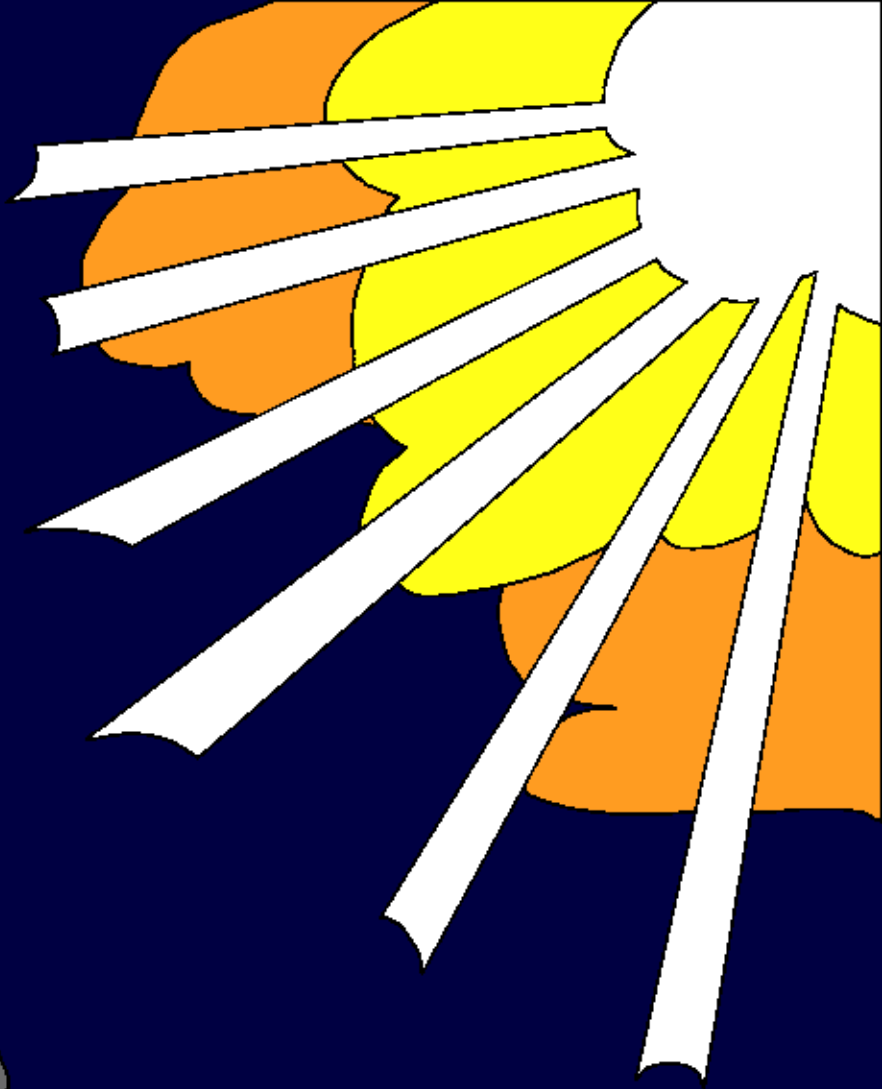
©2023 Bible for Children, Inc.
A kasje kem kunja, maktub nélé Lal gad.



Noé to deou ge wa
Allah mee'g. Deouje
ge rang lai lé dos Allah
reou, deeb dalta tea'g.



Do kara Allah pata to
ge "Ma tuji nangné",
Allah ula Noé to ge
ginkoji lei ge karé bba
a kinga kaji.



Allah ula Noé kedé to ge mann
bélm a taa loo. Ra kei kag ge
boo mbata le njenojije lei ge
daje. Noé unn kudu ra kula.



Deouje kogo Noé
loo ge yeen ula
dee ginn ra tö lea.

Yeen ra
kula lea

kemee

kedee

tobei yeen

ula deouje ta

le Allah Kemee

kedee. Deou kara

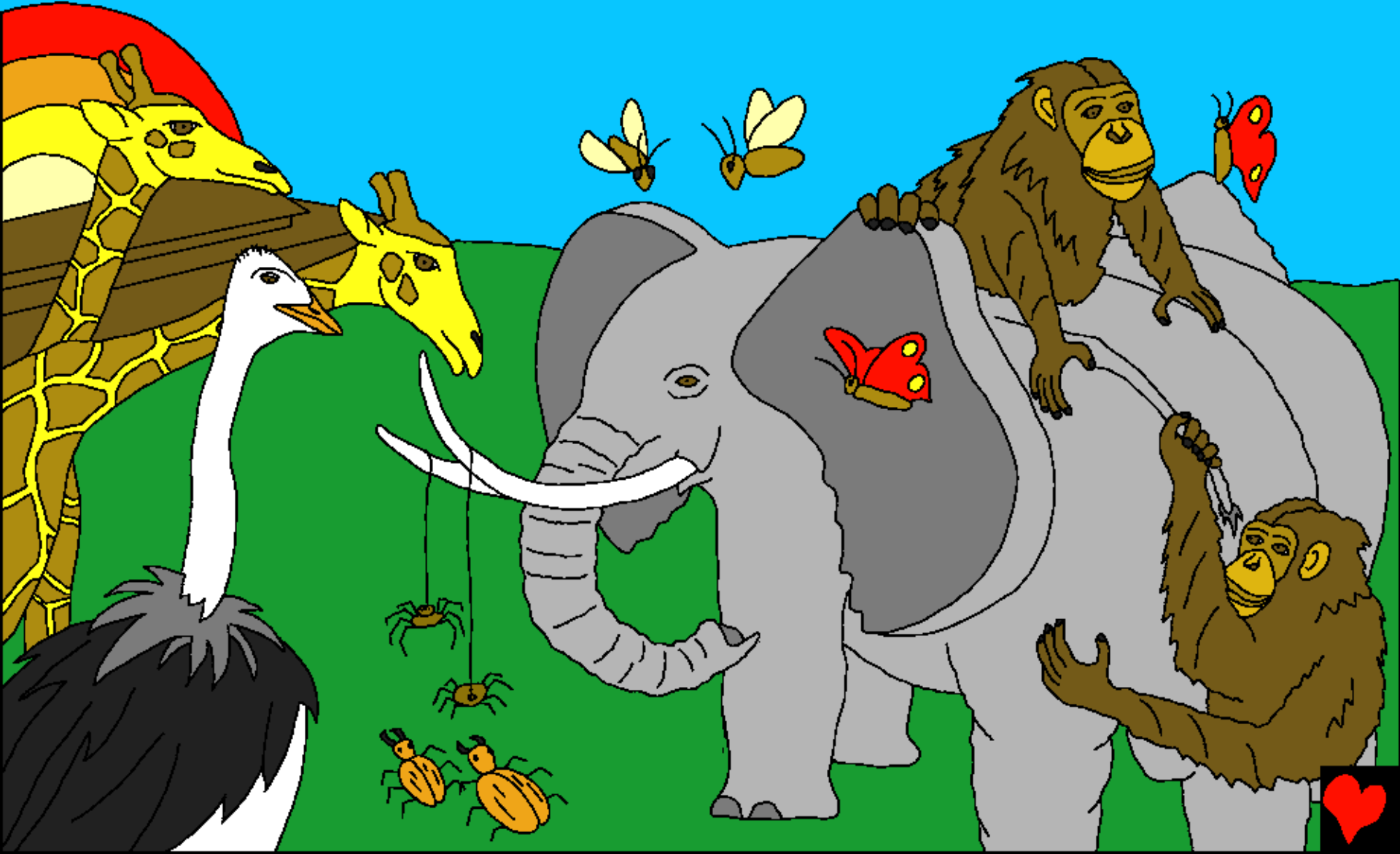
karâ oo ta lea el.



Mee kunda le Noé yaan, yeen um mee
jeb jeb do Allah'g, lé ji'g to ge bbe er
kedee el, yeen ra
tö neelé mbel née
so je kennen'g.



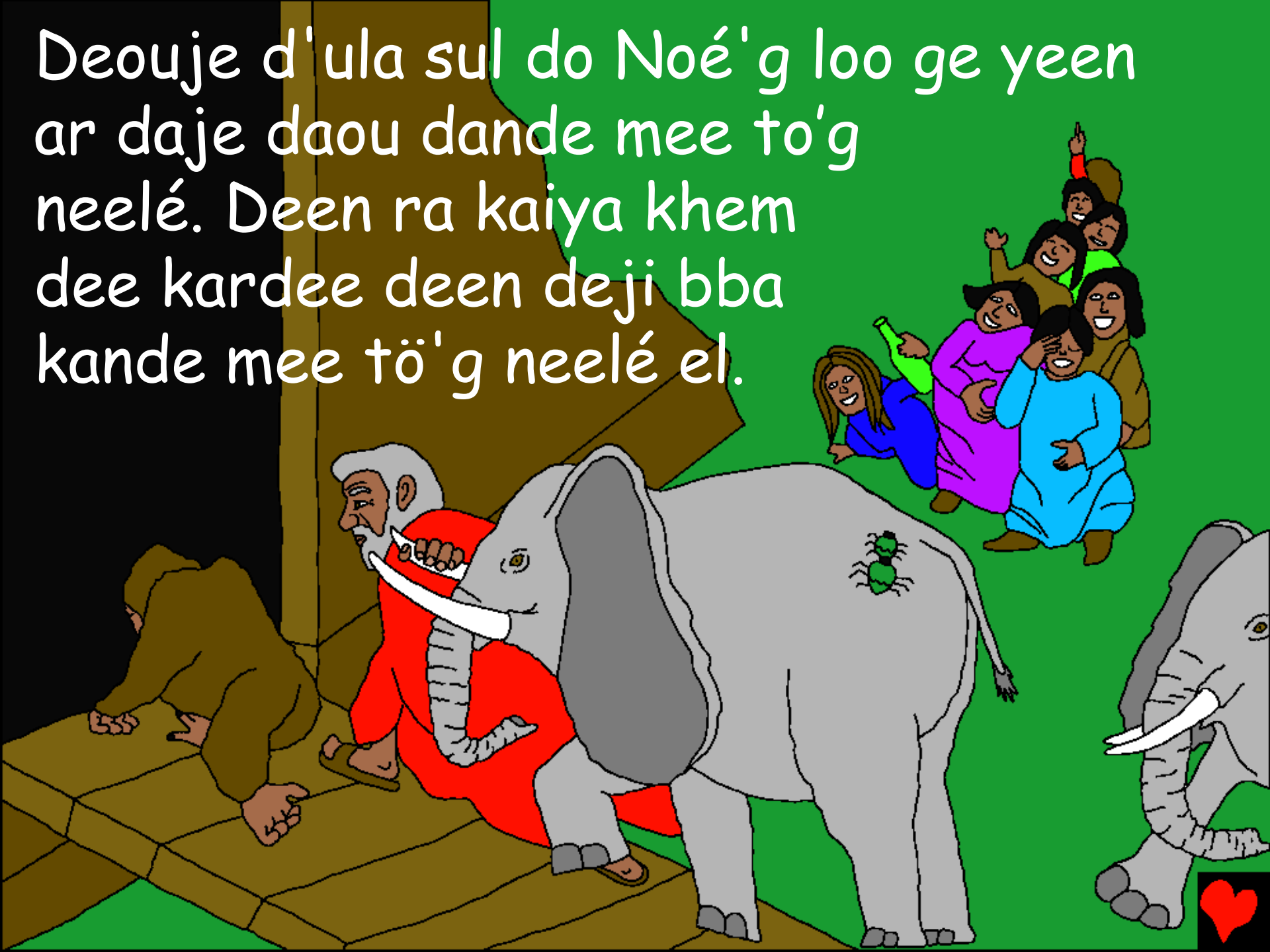
Daje dand mee to'g neelé, Allah ree ge
daje gel siri, tobei daje jo ge rang.



Yelje ge boi lem ge ngann yelje lem to.
Daje'g boi lem ge ngann daje lem to
dande mee tö'g neelé.



Deouje d'ula sul do Noé'g loo ge yeen
ar daje daou dande mee to'g
neelé. Deen ra kaiya khem
dee kardee deen deji bba
kande mee tö'g neelé el.





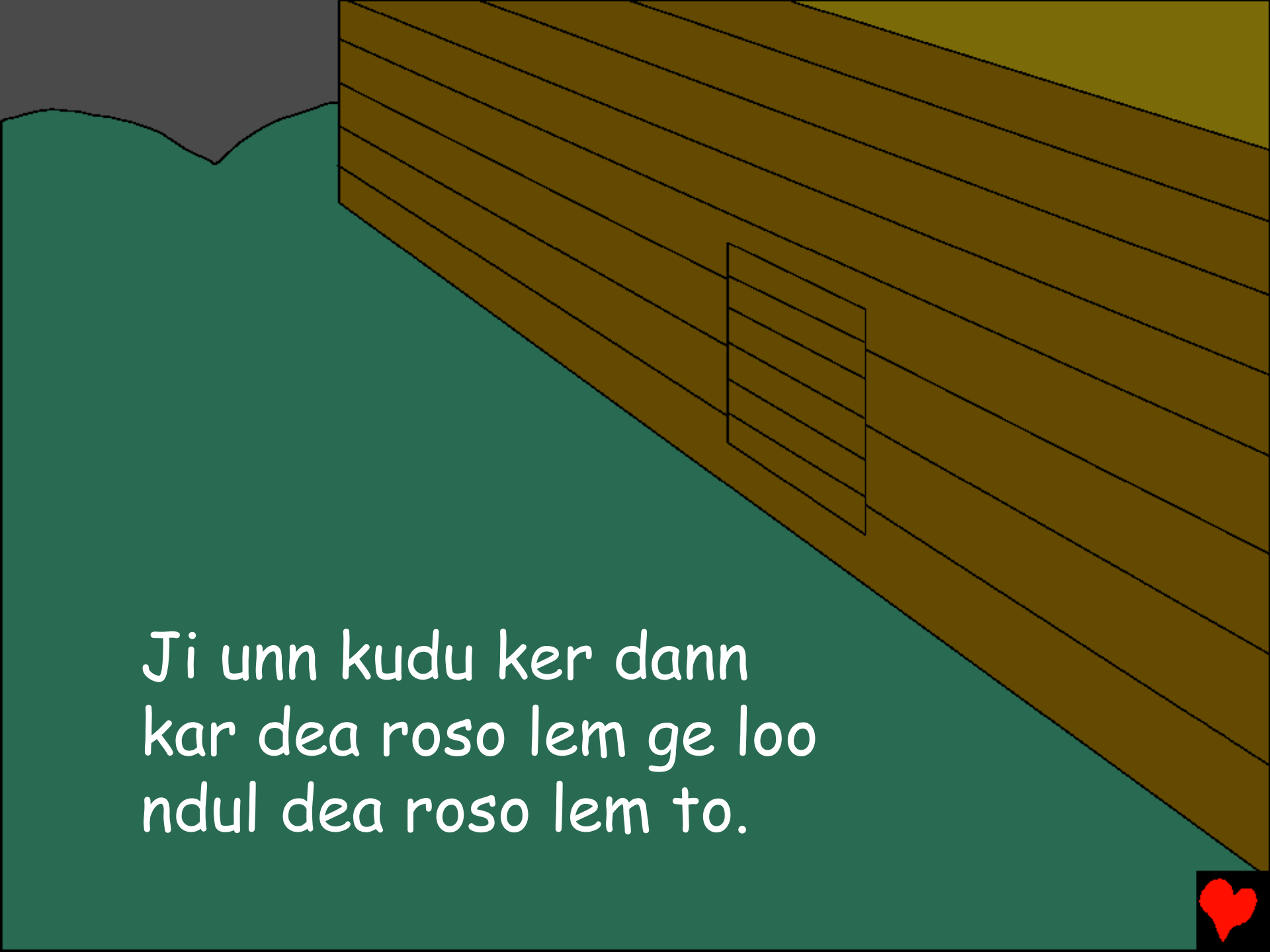
Daje ge
yelje lai
dande mee tö'g
neelé, Allah unn dia
ar Noé karé ande
mee tö'g neele to, ...



A colorful illustration of a landscape. In the background, a bright blue sky features a large, multi-colored rainbow (red, orange, yellow, green, blue) and a bright yellow sun partially obscured by a grey mountain range. To the left, there are white, fluffy clouds. In the foreground, a green hill slopes upwards. On the right side of the hill, there is a large, rectangular wooden structure made of horizontal planks, resembling a fence or a wall. The structure has a small, square window with horizontal slats. The overall style is simple and cartoonish.

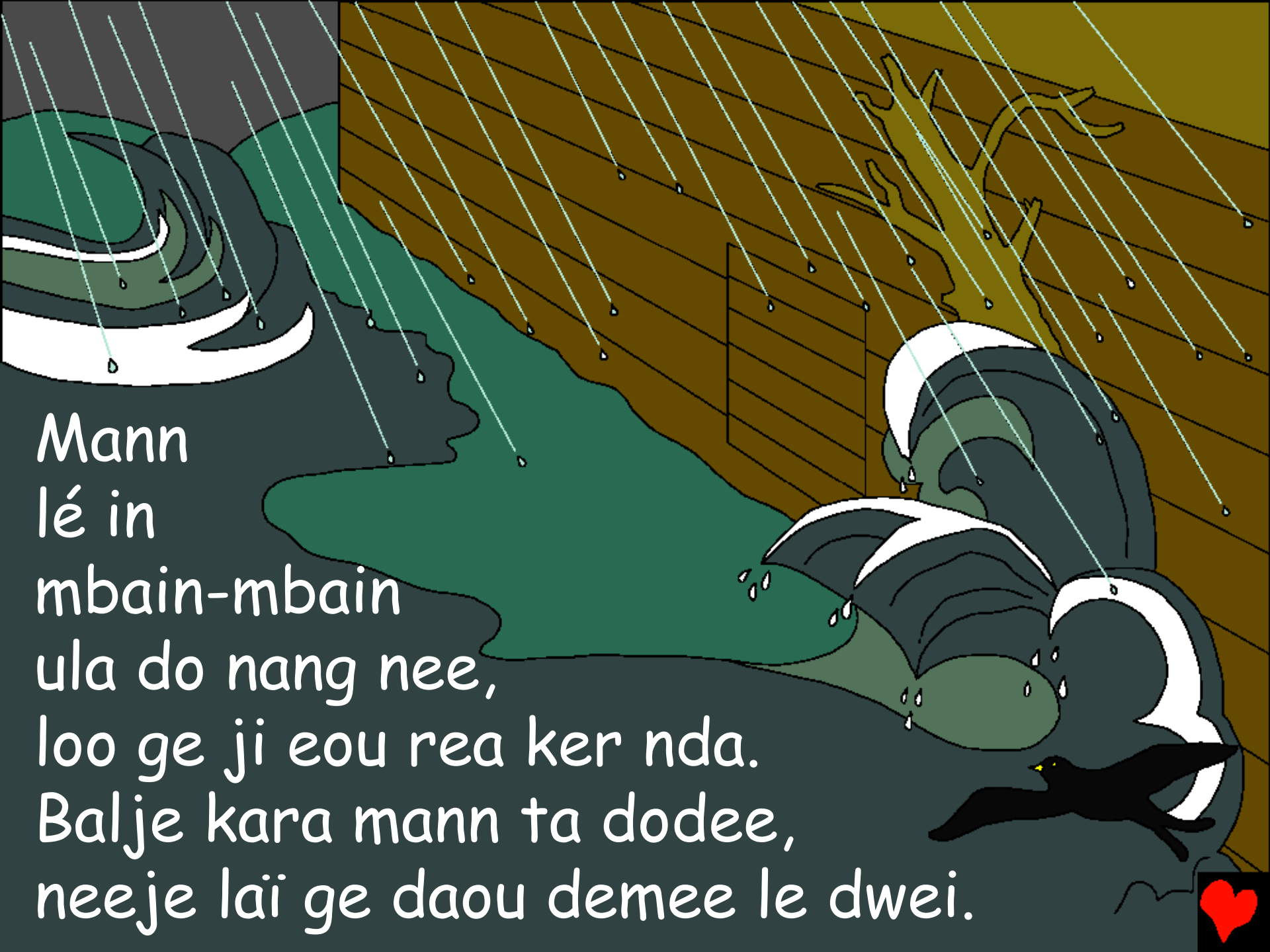
... i ge
njenojije lei,
denné lei, gannije'g
mounda ge denneje ledé,
tobei Allah udu ta tö neele.





Ji unn kudu ker dann
kar dea roso lem ge loo
ndul dea roso lem to.





Mann
lé in
mbain-mbain
ula do nang nee,
loo ge ji eou rea ker nda.
Balje kara mann ta dodee,
neeje lai ge daou demee le dwei.



Lo ge mann unn kud
ta loo, tö lé ein do
mann ge neelé. Loo
dul mee tö, mee tö
neelé ra beul né tö
neelé gem Noé.



Loo ge mann taa donang as nai
mi nda, Allah ula ge lel ge tudu,
tö le tel ar nang lo kara bba
lem. Noé tel shi mee tö ge
le as ndo roso
bba uru nang
bei.



Noé ula ge der ge bole loo
karee né yeen inga loo bba
shi'g el nda yeen tel ro Noé'g.





Ndo dess siri bei
nda Noé ula der ya
tobei nda yeen tel'g
mbi kag tea'g. Ndo
dess siri rang yaa tobei
Noé oo to ge nang tudu
nda der lé yeen tel el.




Allah ula Noé pana, kar as karee yaan
tö lé. Noé ge njenojije lea lai
dean daje tar.



Ro Noé lélé
yaan aree
yeen ra kei
kubu kan kwa
Allah mee'g
kennen'g
njenojije lea.





Allah mânn
rea ar Noé.
Na tuji
nangné ge
mann gogo el ga.

Yeen yaan
nee kolee mee
kara woji nee do
mânn ro lea yeen
bba to gabraji.



Go mann bélm'g,
Noé ge njenojije lea
dunn pajea ge cigi.



Doje des, ginnkoji
lea ta donang pelpel.
Deouje lai ge donang
né to ginn koji ge le
Noé ge nganné.



Noé ge Mann Bélm

Surta'g wodji dö Allah, maktub'g to ge Keme

kinga mee

Gi-Néje 6-10

"Taje lei ge dogo."
Pakosje 119:130



Tol Tea



Surta ge to mee maktub'g to ge kemee bed neelé ula ci ta ge woji do Allah'g njemeenmadji ge yeen unda ci lem, ge ndigi kar i geree lem to.

Allah ger to ge njen ra nemajelje yaan, yeen bba yeen baree kaiya. Né kunga doji kaiya le to yo. Né Allah ndigi ci yan bba ula ngonné ged-ged kara bba, Jesu wei kar kag des'g mbata kaiyaje. Tobei, Jesu tel shi khem bba lem, yeen aou dara lem to. To ge i om mei do Jesu'g bba i deje bba kar mee oso lemssé daa yeen a rané yaa. Yeen a ree shi mei'g lem i kara shi sea nand sar-sar'g non ya.



Bolé i om mei do'g to ge to ta ge togero nda, i pata né : Mbai Jesu, m'ger to ge i to Allah, tel roi deou sar wei né mbata kaiyaje lem, tel shi khem bba lem to. Kogero ya, m'ya shi khemba lem mee ji'g, ar mei oso lemssé do kaiyaje'g lem, bba kar'm tel pa jea lem cigi lem, ndo kara ma kaskem shi sei nand sar-sar'g non. Lassem bba kar'm m'illa ngonni koji doi'g lem, bba kar'm shi kembba mbata lei to'g ngonni. Amen.

Turaje maktub'g to ge Keme bed lem, ojije ta'g Allah ndoje kara kara lai lem. Ja 3:16

