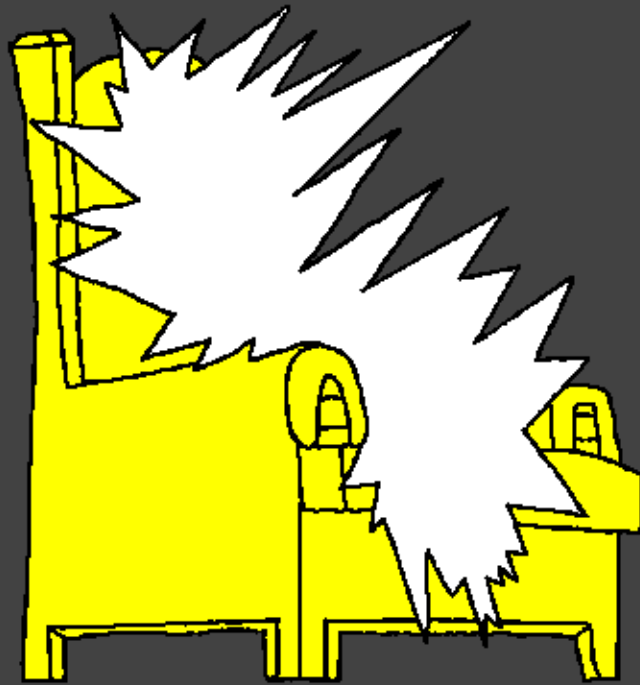


Maktub'g to ge Keme'e Mbata Ngannje
baciné



Dara, Kei le
Allah ge
Maji Yan



Ddjéndangué: Edward Hughes

Djétumguiné: Lazarus
Alastair Paterson

Djéria: Sarah S.

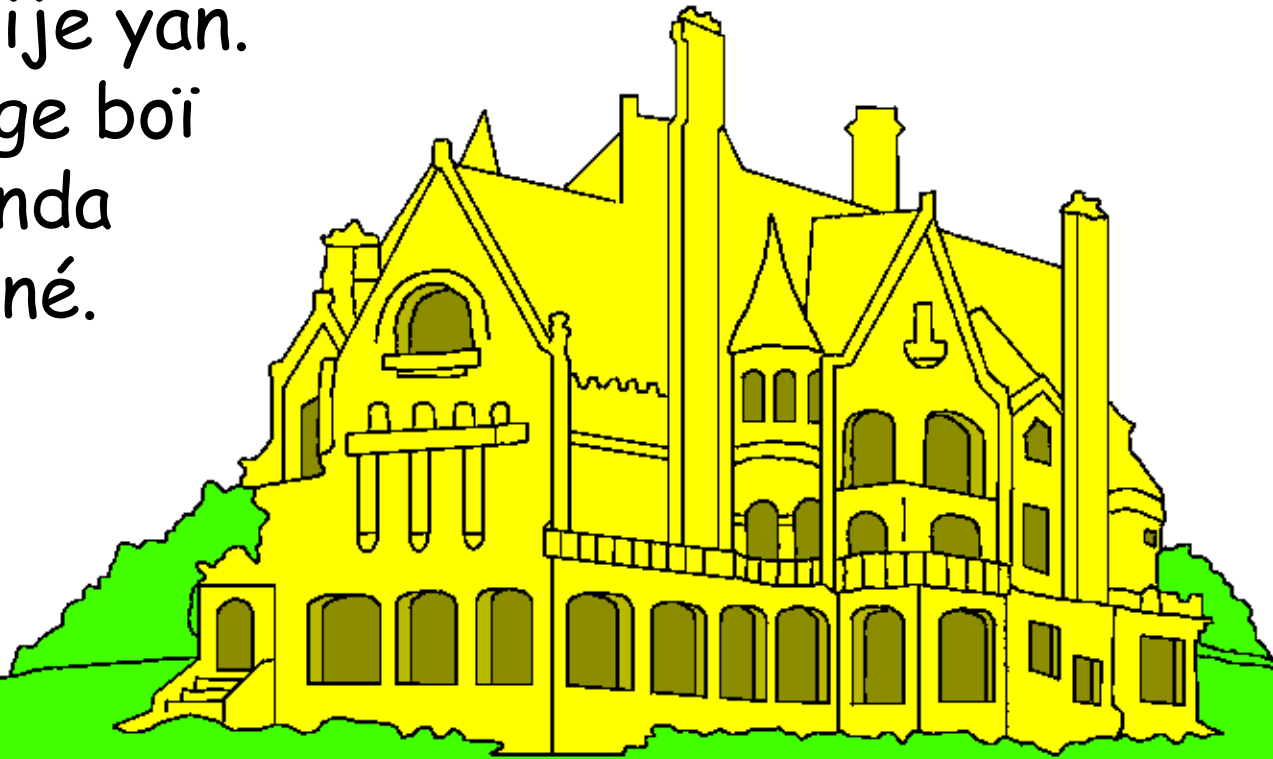
Djetelguiné: www.christian-translation.com

Djerea: Bible for Children
www.M1914.org

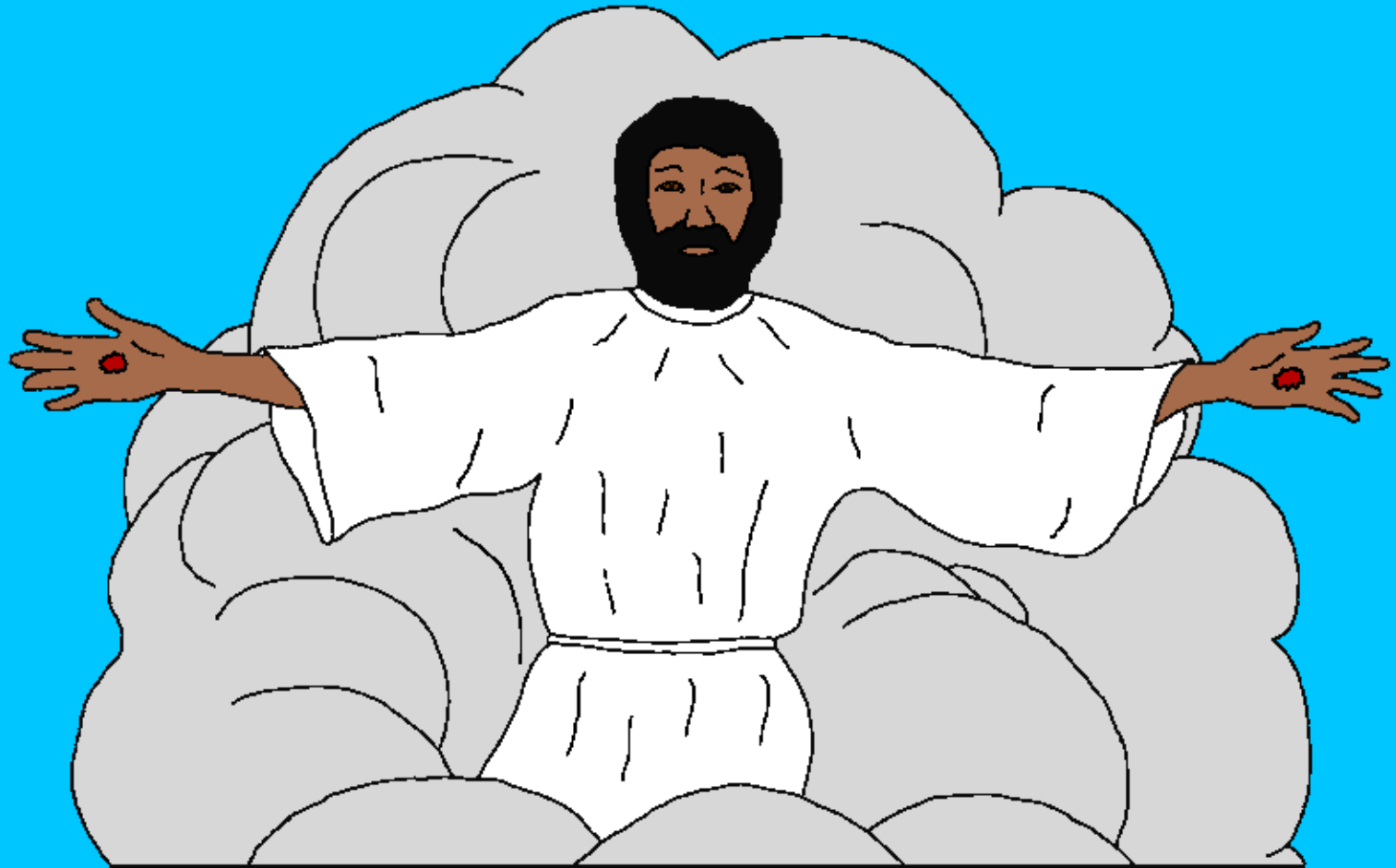
©2023 Bible for Children, Inc.
A kasje kem kunja, maktub nélé Lal gad.



Loo ge Jesu shi nang né, yeen pata le
dara nee ar njekwa killaje. Yee bar
Dara to ge to "kei boom" tobei
yeen pana loo shije yan.
Lo shi né to kei ge boi
tobei maji yan unda
keije lai donang né.



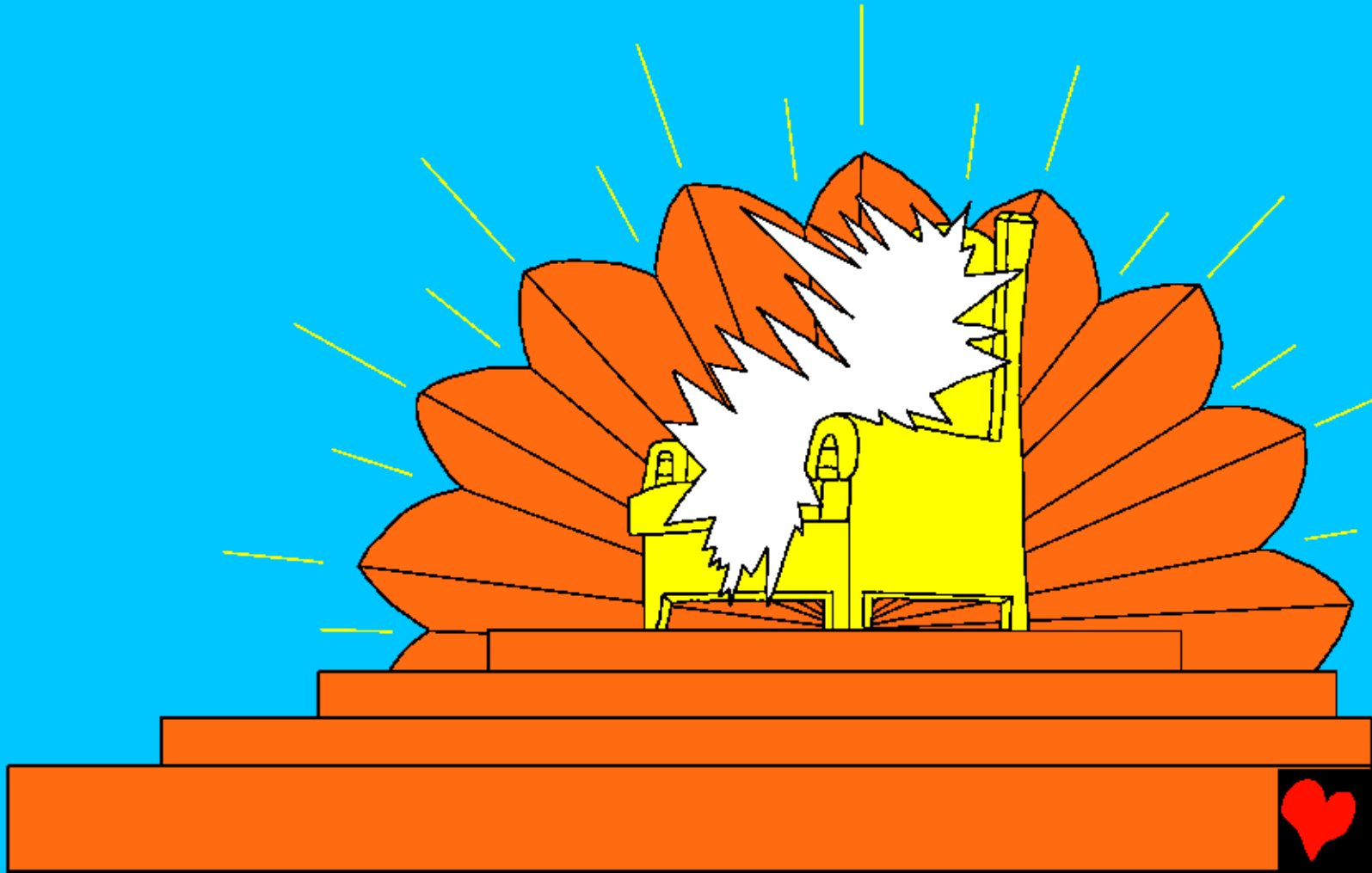
Jesu pana, m'a ra lo shi le ci. To ge m'a m'aou ra loo
shi ci nda, m'am tel ré kodo ci romdee dara lem to.
Jesu tel aou dara lo ge yeen unda lo yo tein. Loo ge
njekwa killaje deen doo Jesu aou dara nda yeen
godo kemdee'g.



Mee dea nee ya Njetameekristije lai meedee olé do
ta ge Jesu ula dee to ge yeen a tel mba godo rea'g.
Jesu le pana n'a ree to ge nje bogo.
Né Njetameekristije d'wei ban bba
kar ndo re le Kristi neelé as lé,
se kandee to toge bann wa?
Maktub'g to ge Kemee pana
deen deou ro Allah'g loo
ge deen d'wei. Kan
khem ro dee shi ro
mbaidombai ge.



Lookillarea, maktub'g rudu, mee maktub'g mann
ro'g sigi pana: ci to'g bbe ge dara lé maji yaan. Néje
ge maji maji bba to kennen'g. Dara le to bee le
Allah. Allah to ge looje lai bé kalimbai lea to dara.



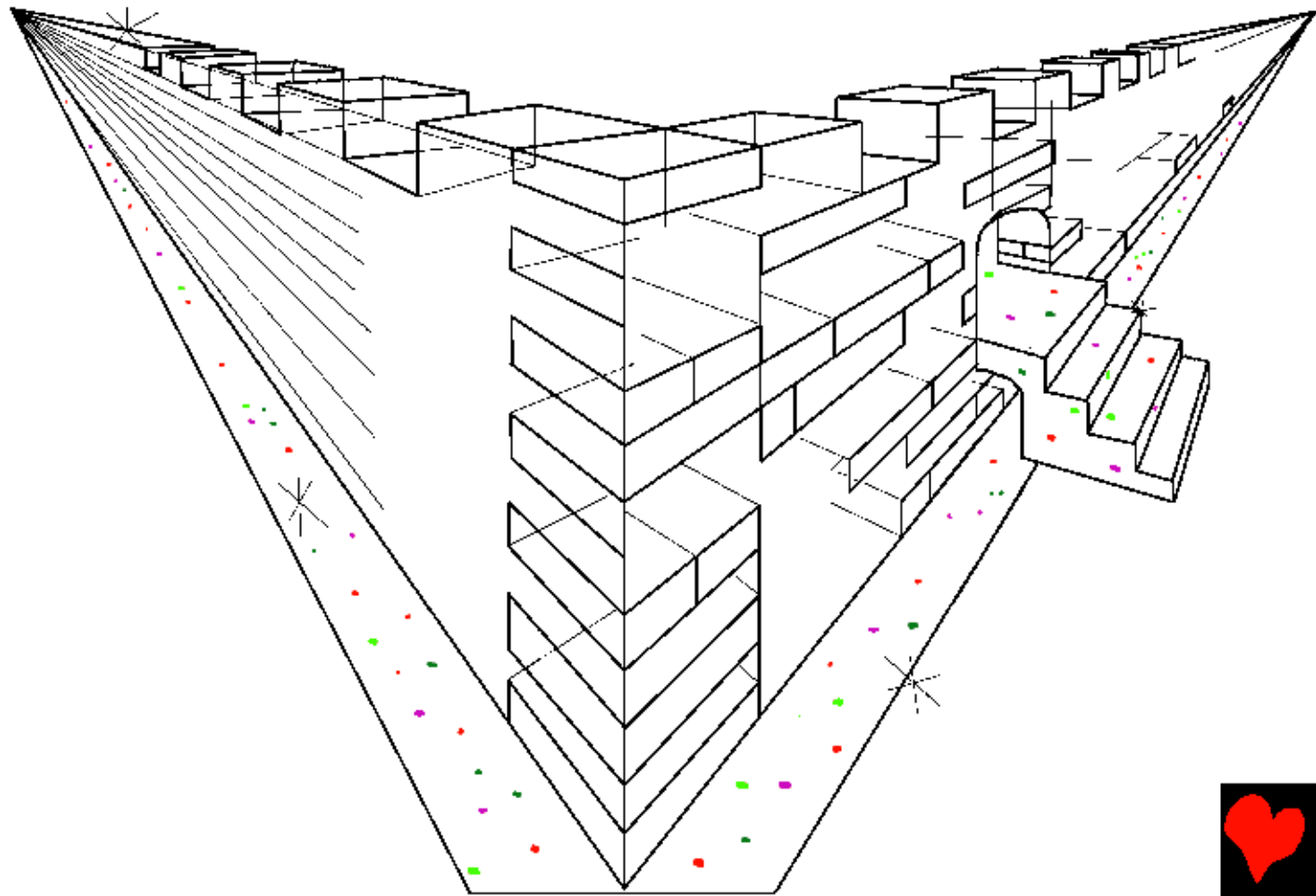
Kuraje ge dara ge neeje lai'g nang ge dara
d'ula ronduba do Allah'g to to ge
bbe mbata deouje lai ge d'wei
ge d'aou dara deen d'os pa
d'ula nee ronduba do Allah'g.



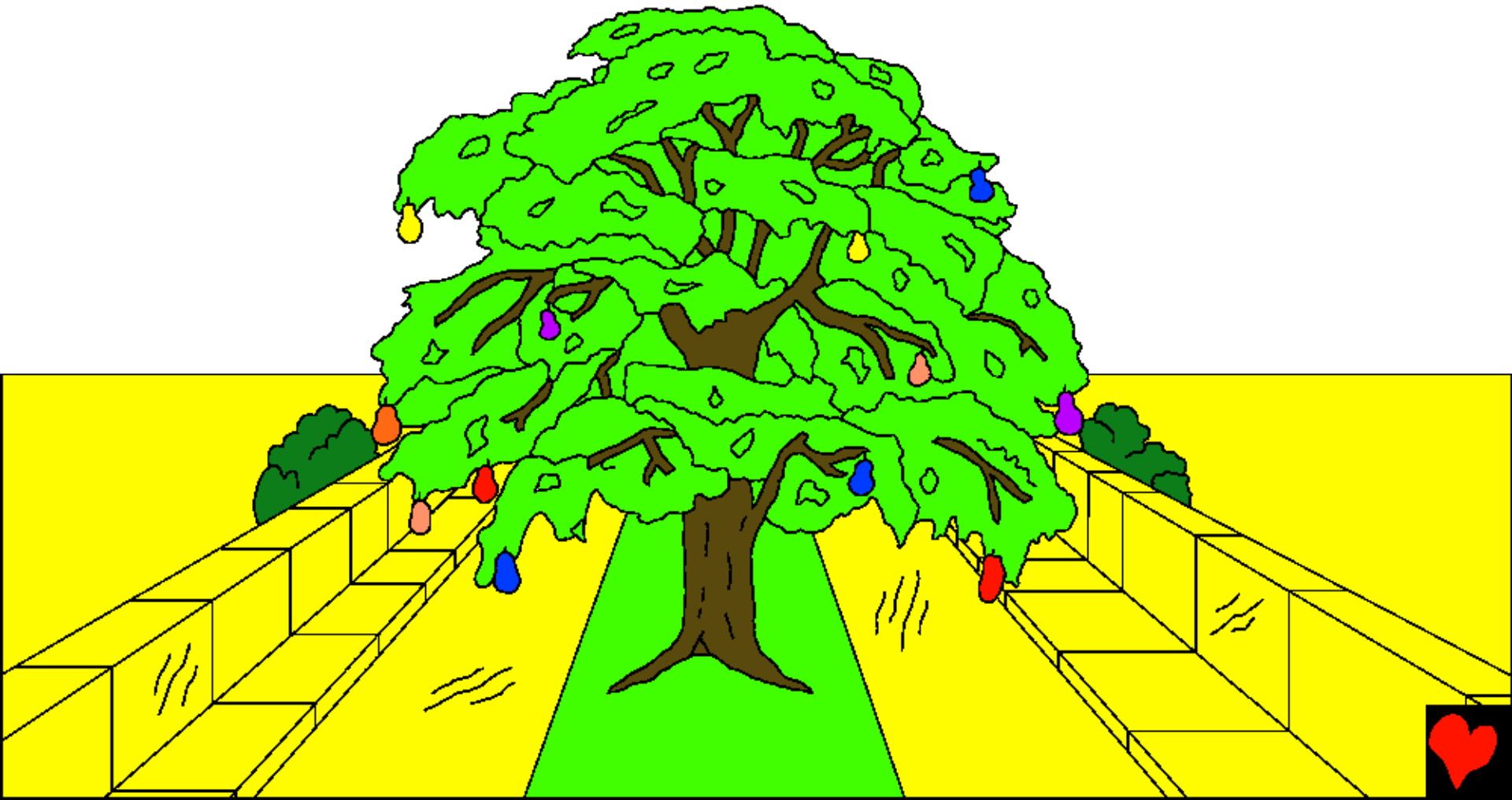
Ta'g deen d'os nee pa bba né:
I to ge kemee bed mbata i
ndogici ge messee, ginn kojije
lai i telci'g mbaije mbata le
Allah (Lookillarea 5:9).



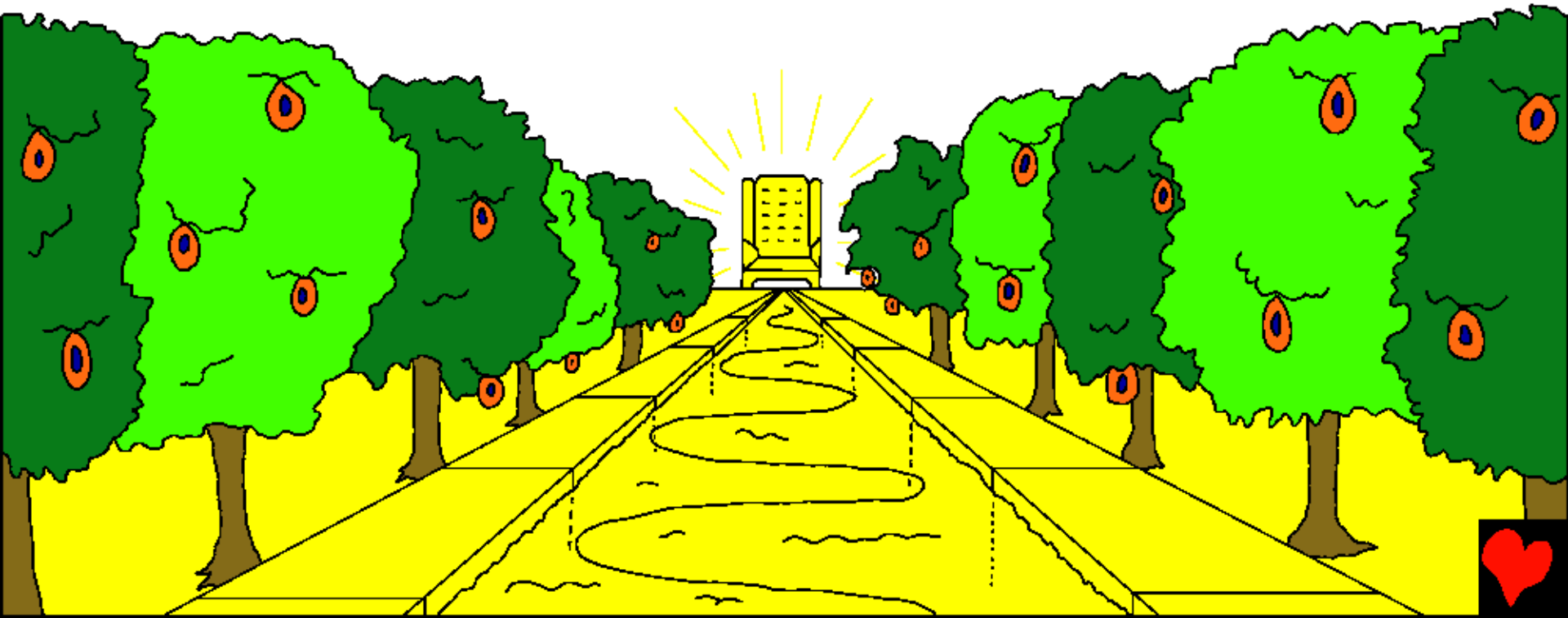
Rudu mbété mee maktub'g to ge Kemeé bed
le pataje'g oji do dara, Jerusalem'g sigi
yeen tad reg reg ge ndolé kei kei lem to.



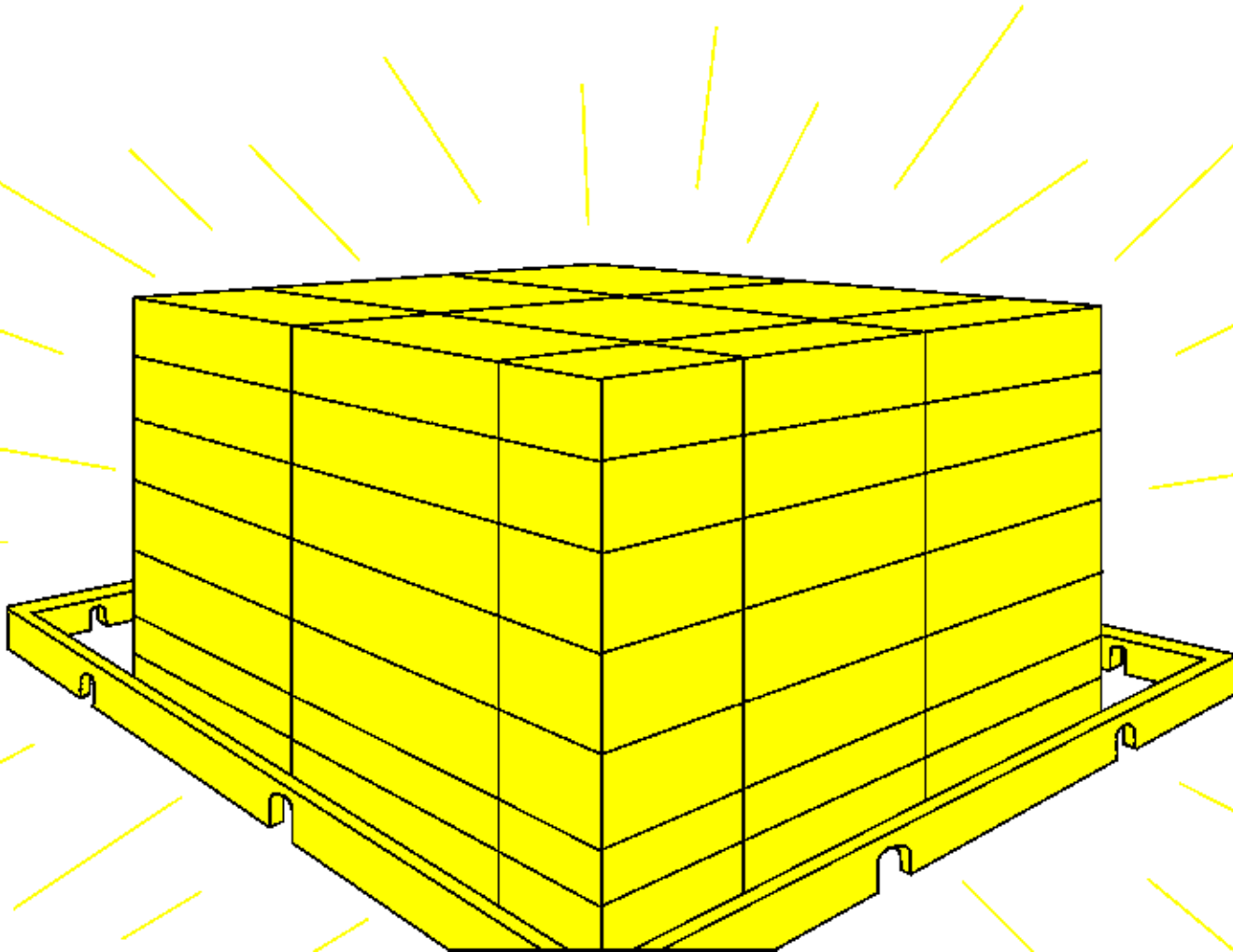
Ta kei neelé udu ndo kara el, maji karci j'endeje
kennen'g j'ooje! Bee ge dara maji mee'g yaan yaa
tobei. Mee bee neelé to ge lar lor lem doi gelgel
lem, reouje kara to ge lar lor lem to.



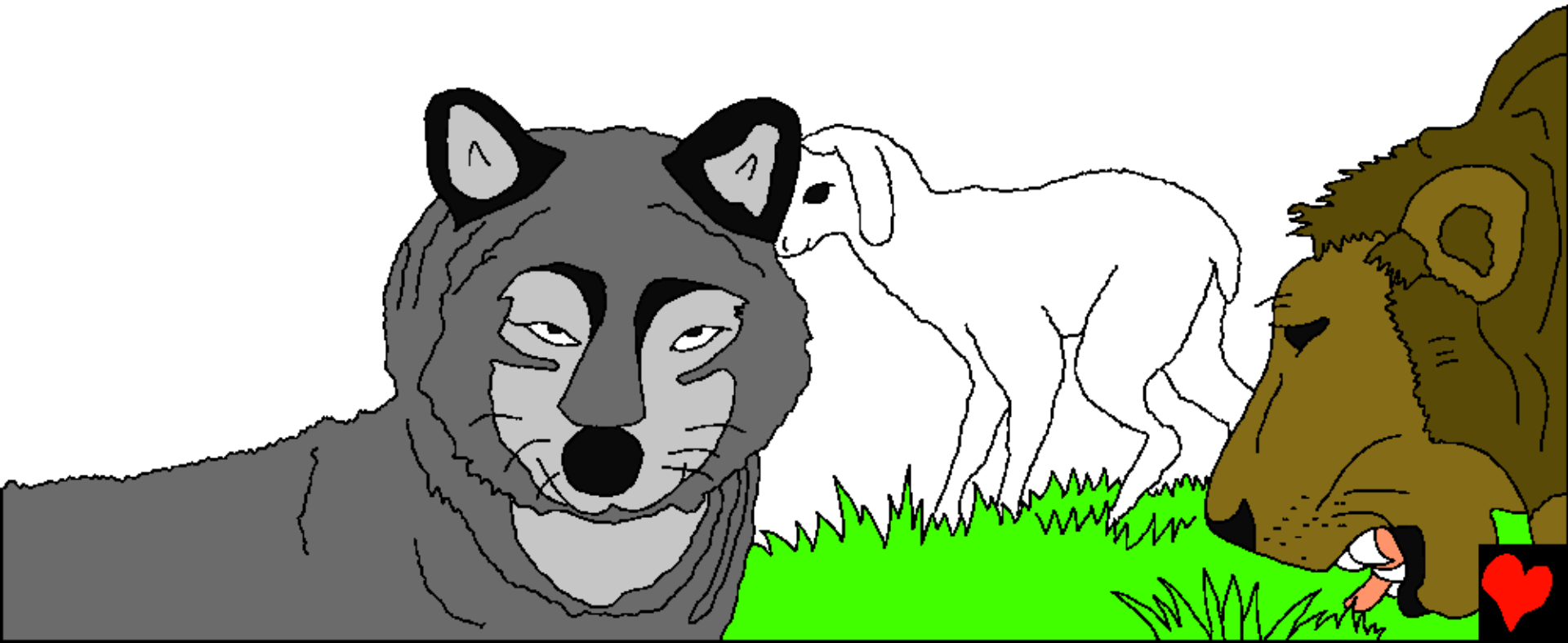
Mann kan shi ge khem sar sar'g non le aou ula kalimbai'g le Allah lem, gangé karakara lai lé kag kan shi'g khemee le to ge lem to. Dotar lé to mee ndö'g Eden. Kag neelé to ge kemee bed. Kandee to bed-bed as 12. Kandee kara kara lai le aou tur rea ge nainje nainje to. Kam kag neelé aou aji deouje.



Dara le aou doo né dogô bba mba dogô
né el. Ronduba le Allah ta mee pelpel to
ge lookar bbe. Loo ndul godo kennen'g.



Daje ge dara kara to bed deen d'wa nan mar
tobei bissije ge badje kara d'usa nee nandee.
Njeshiqenean pana deen neelé d'aa toji nee
kara kara do bal'g le né'g to ge kemee bed lé el.



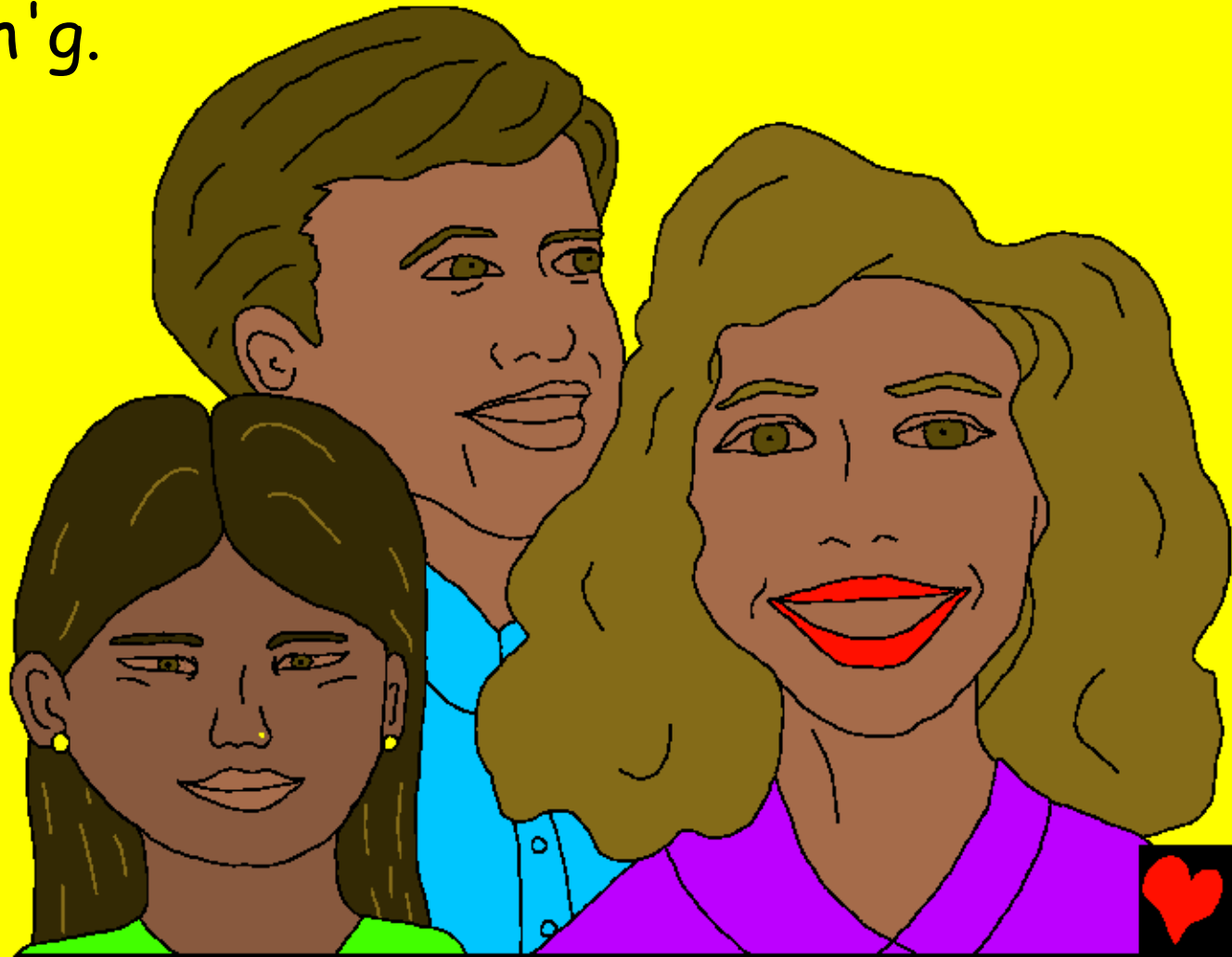
Jeen joo lo borci'g, jeen joo
neeje ge godo dara. Meekon
donan, kunda kar godo dara.
Kandé né kan kudu nee
takei kara godo dara,
njegang taje godo
dara, kaiya kara
kara godo dara.



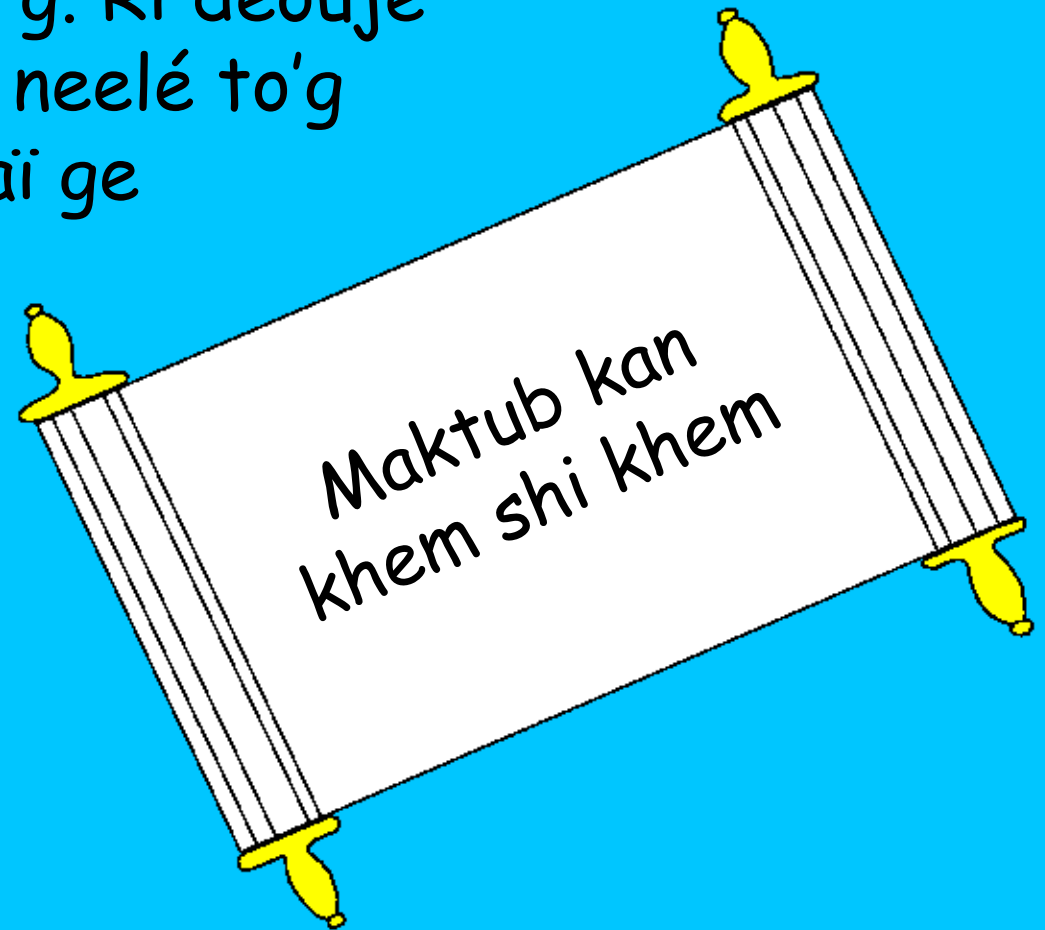
Dara ro Allah'g, non godo lem,
loo ge nanje deouje le Allah non
mbata nee mekonje'g donang né.
Deouje rodee neldee ndoje
kara kara lai ro Allah'g.



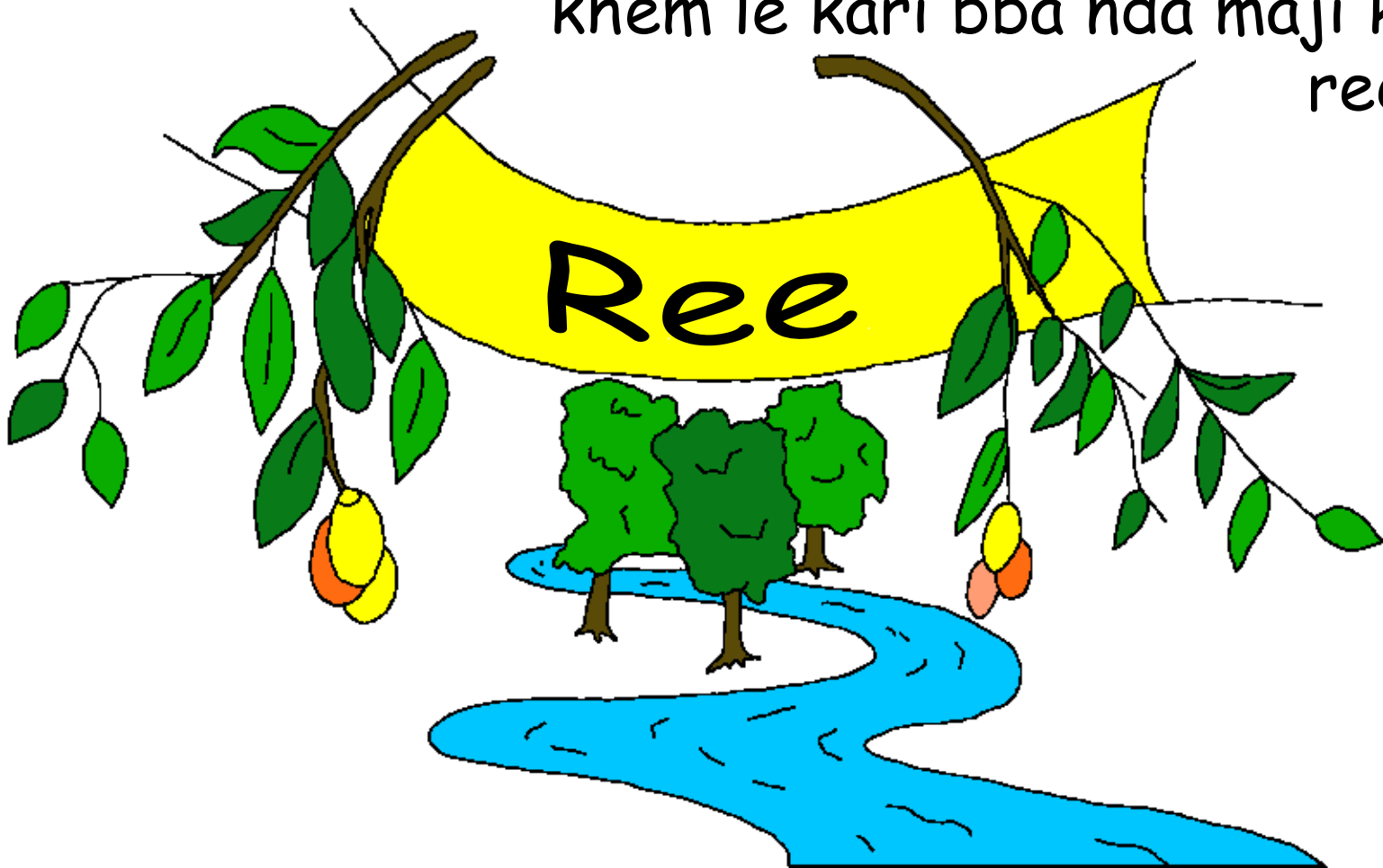
Dara lé yoo kara godo lem, deouje le Allah da shi
sea sar sar'g non, non godo lem, kon godo lem, ro
kon kara godo lem to. Mee dara'g lee ro deouje
lel dee ndoje kara
kara lai ro Allah'g.



Dara to mbata nganneje ésé deouje'g tog ge d'um mee dee do Jesu'g to'g njekaji dee, deen ge d'illakoji dea'g dé mbai lee dee. Mee dara'g le, mbété ge jeen baree mbété kan shi ge khem le ngonn bad to kennen'g. Ri deouje rusu mee. Gerje riye neelé to'g kan nan wah? Deen lai ge dian mee dee yag d'aar Jesu. See ri to'g ya wah?



Rudu taje le maktub'g to ge Keme'e bed pata ge woji do dara'g maji lea lem to ge bar ge bari kennen'g lem to. Ndil'g ndigam deen pana: ré ! Bolee deou'g bia togen bba oo nda pana, ré ! Deou ge kunda mann tolé nda maji karee ree. Deou ge digi kain mann ge kan khem le kari bba nda maji karee ree.



Dara, Kei le Allah ge Maji Yan

Surta'g wodji dö Allah, maktub'g to ge Keme

kinga mee

Ja 14, 2 Njé Gó Koritə 5

Loo Gó Killa Rea Kam Ja'g 4, 21, 22

"Taje lei ge dogo."

Pakosje 119:130



Tol Tea



Surta ge to mee maktub'g to ge kemee bed neelé
ula ci ta ge woji do Allah'g njemeenmadji ge
yeen unda ci lem, ge ndigi kar i geree lem to.

Allah ger to ge njen ra nemajelje yaan, yeen bba yeen baree kaiya.
Né kunga doji kaiya le to yo. Né Allah ndigi ci yan bba
ula ngonné ged-ged kara bba, Jesu wei kar kag des'g mbata
kaiyaje. Tobei, Jesu tel shi khem bba lem, yeen aou dara lem
to. To ge i om mei do Jesu'g bba i deje bba kar mee oso
lemssé daa yeen a rané yaa. Yeen a ree shi mei'g lem
i kara shi sea nand sar-sar'g non ya.

Bolé i om mei do'g to ge to ta ge togero nda, i pata né : Mbai
Jesu, m'ger to ge i to Allah, tel roi deou sar wei né mbata kaiyaje
lem, tel shi khem bba lem to. Kogero ya, m'ya shi khemba lem mee
ji'g, ar mei oso lemssé do kaiyaje'g lem, bba kar'm tel pa jea lem
cigi lem, ndo kara ma kaskem shi sei nand sar-sar'g non. Lassem
bba kar'm m'illa ngonni koji doi'g lem, bba kar'm shi kembba
mbata lei to'g ngonni. Amen.

Turaje maktub'g to ge Kemee bed lem, ojije ta'g
Allah ndoje kara kara lai lem. Ja 3:16

