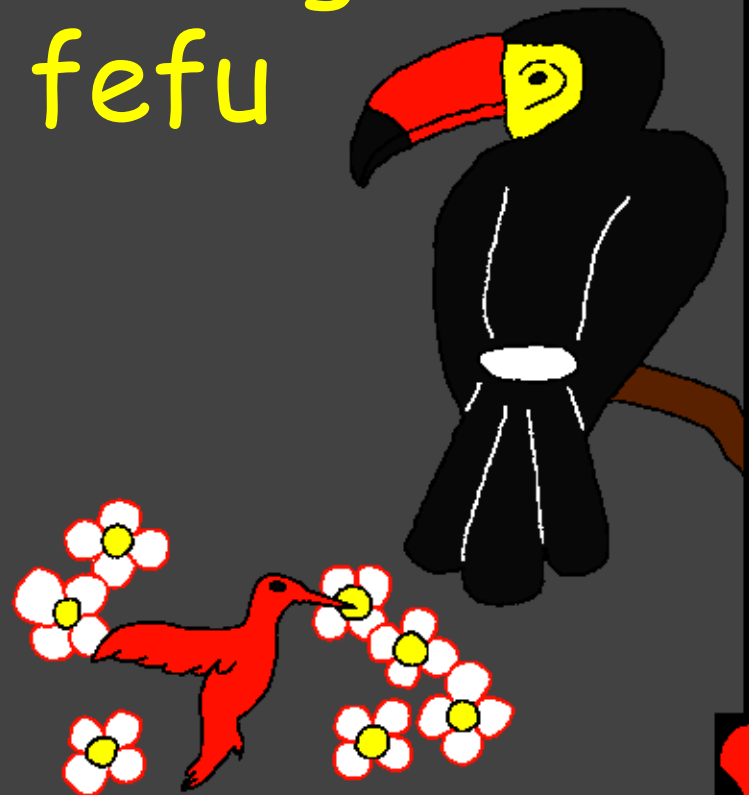
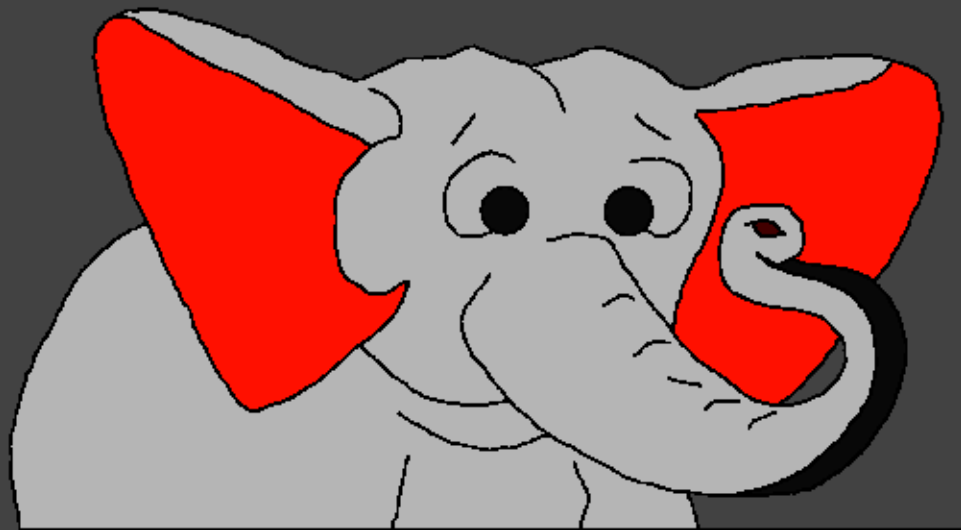


Buku Taroma li Lowalangi
(Ni'amoni'ö) ba ndraono
Ni'fa'aso

Ba mböröta me Lowalangi
andrö I'fazökhi fefu
hadia ia



Ni'sura: Edward Hughes

Ni'amaedolagö: Byron Unger; Lazarus;
Alastair Paterson

Ni': Bob Davies; Tammy S.

Ni'fo'eluha: Dorkas Orienti Daeli

Ni': Bible for Children
www.M1914.org

©2020 Bible for Children, Inc.

Lisensi: So sitobali dana (hak) ba wango'oya'ö
nidunö'dunö andre asala lö lafamawa.



Haniha zamazökhi niha? Ba mbuku
Ni'amoni'ö ba no goroisa Lowalangi
da'ö ba te'ombakha'ö sibai khöda
he'iwisa famobörö wamazökhi
mbosi niha
andrö.



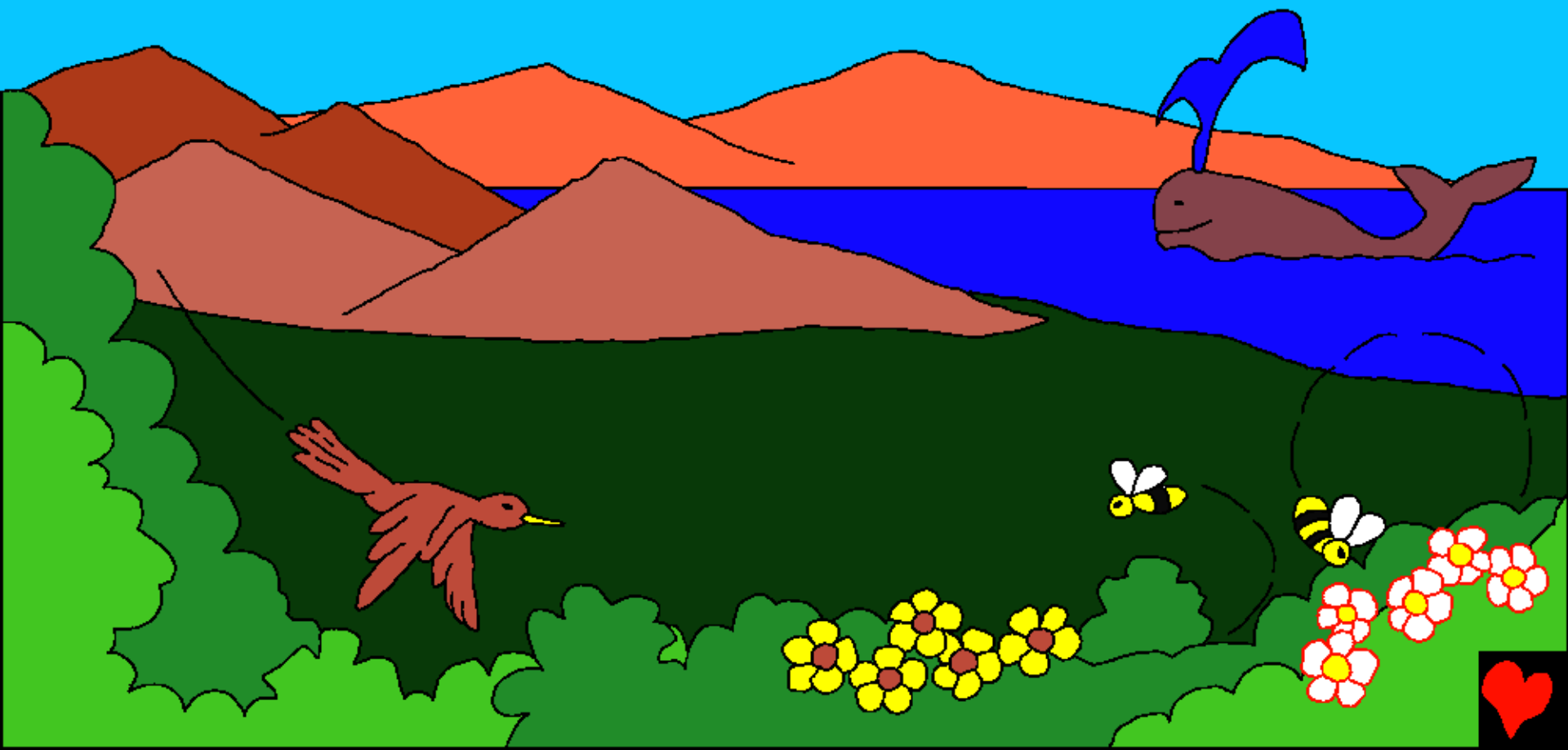
Ba mböröta, niha ni'fazökhi
Lowalangi andrö tebe'e döinia
Gadamo. I'fazökhi niha andrö
Lowalangi moroi ba
gawu'gawu ba
danö.



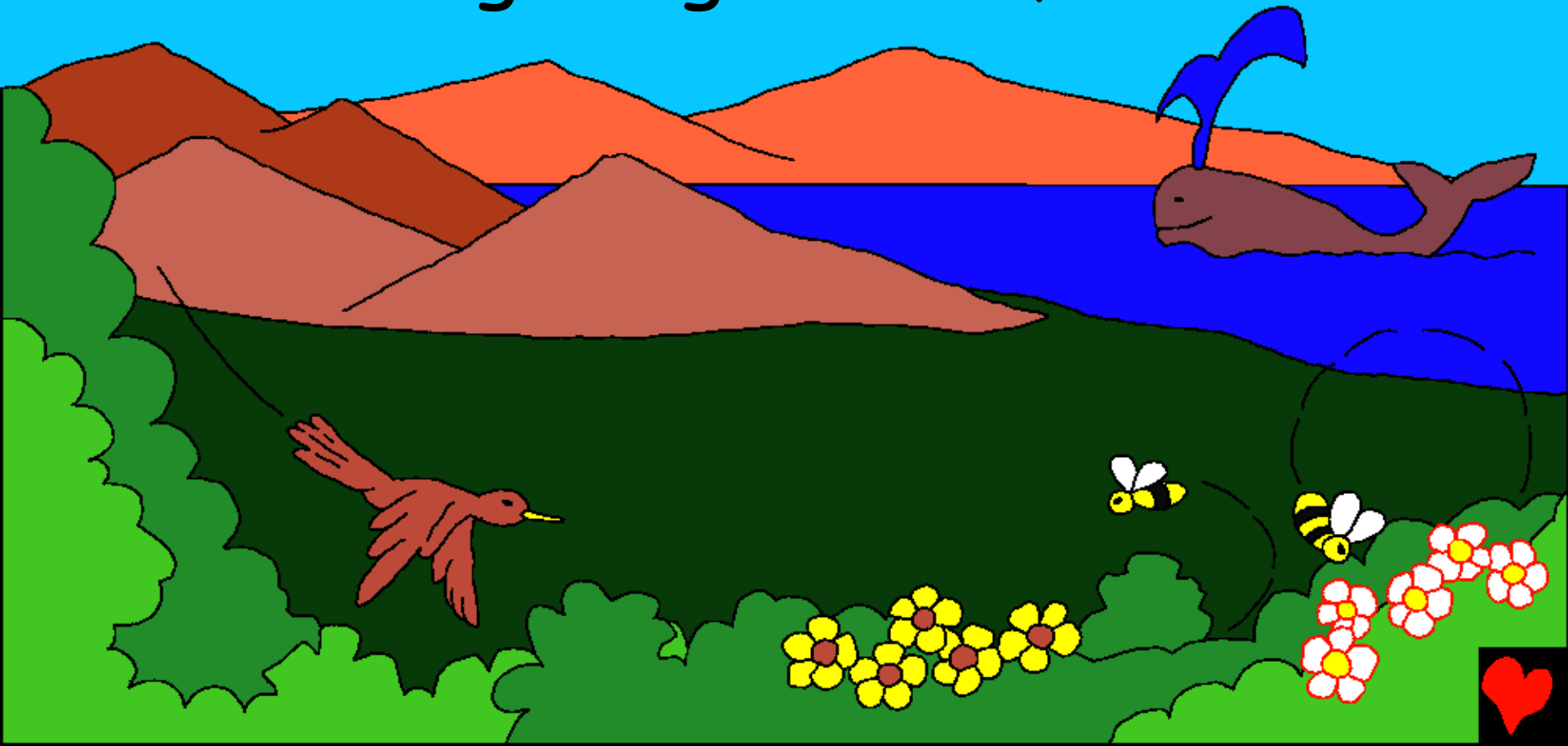
Ba me I'wuwusi hanu'hanu-Nia
Lowalangi ba auri Gadamo andrö. Ba
i'ila wa ba kabu si sökhi sibai so ia
Gadamo, yaia ba kabu
Gedena.



Me lö nasa mufazökhi Lowalangi
andrö Gadamo, ba I'fazökhi ua ösi
gulidanö si sökhi sibai Lowalangi.



Ba I'zara'zaraini ngaluo Lowalangi
wamazökhi ösi gulidanö, yaia da'ö
danö so hili, danö si tumbu zinanö, ba
bowo mbunga sogomuhua, ...



... ba sinanö sohunö, gurifö si
so ba dalu mbanua simane wofu
samarongogö li ra ba simanö göi
gurifö ba dalu nasi. Da'ö

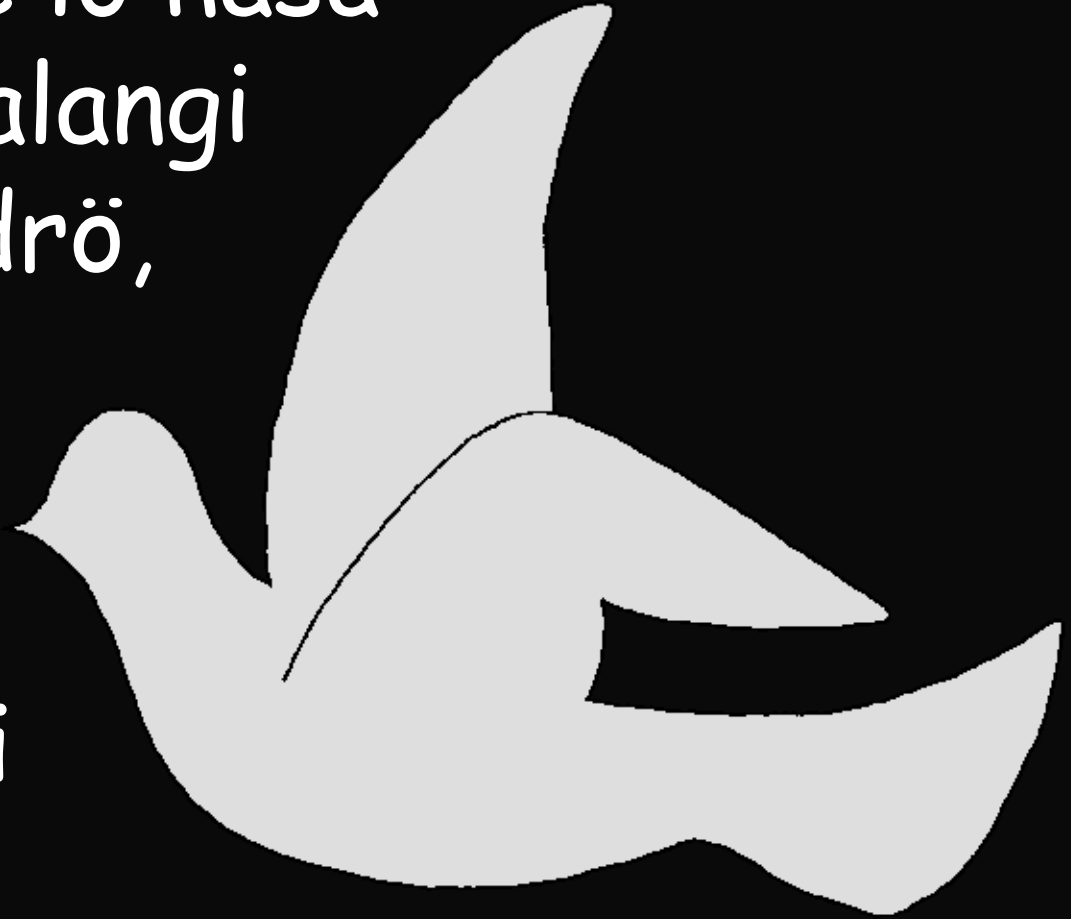
fefu oi nifazökhi
Lowalangi.



Ba mböröta, me lö nasa
mufazökhi Lowalangi
ösi gulidanö andrö,
me si lö ösi. Ba
no ogömi'gömi,
lö si toföfö.

Ba ha Lowalangi
andrö si so, ba

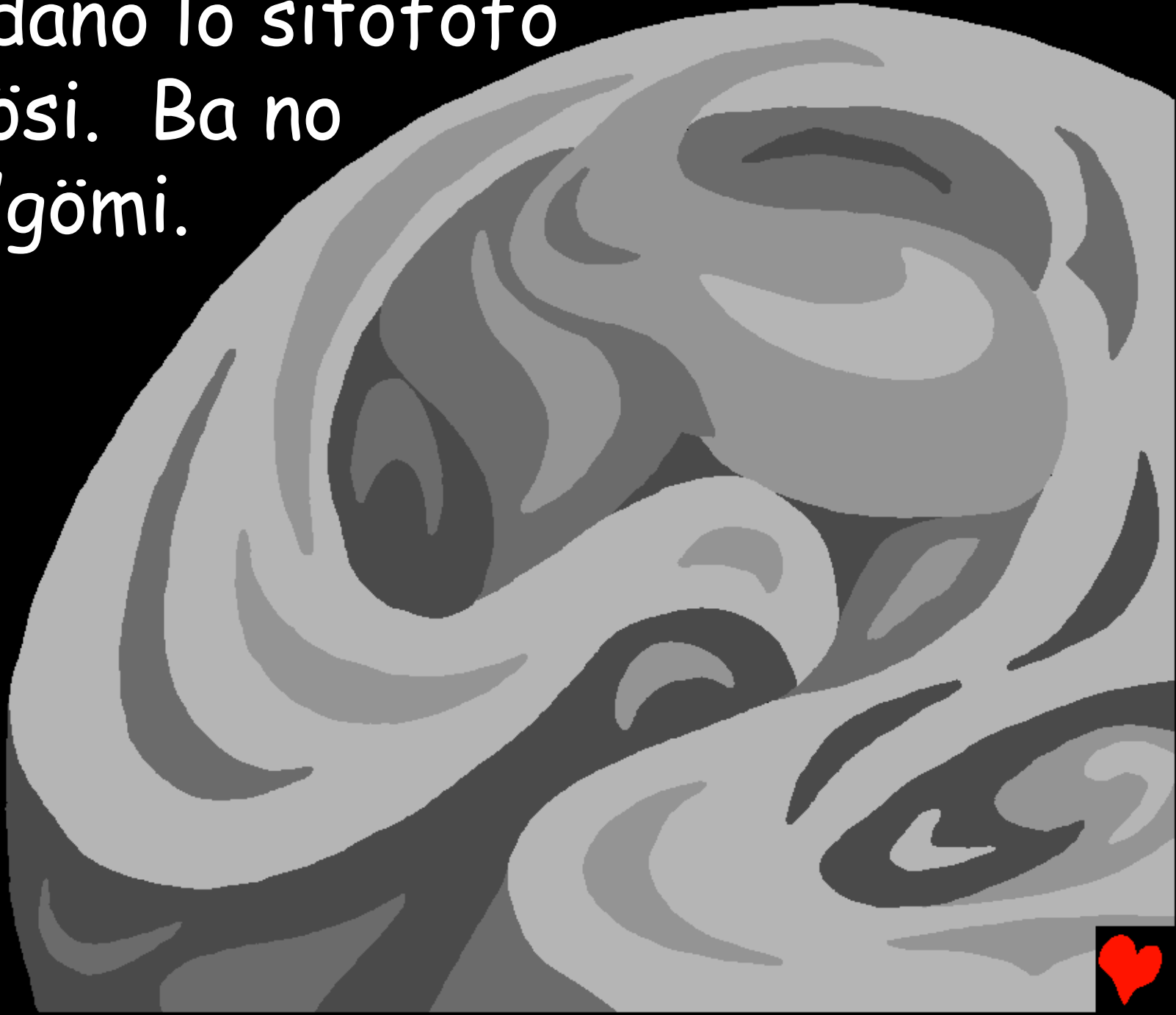
Ya'ia Lowalangi Samazökhi gofu
ngawalö ösi gulidanö andrö.



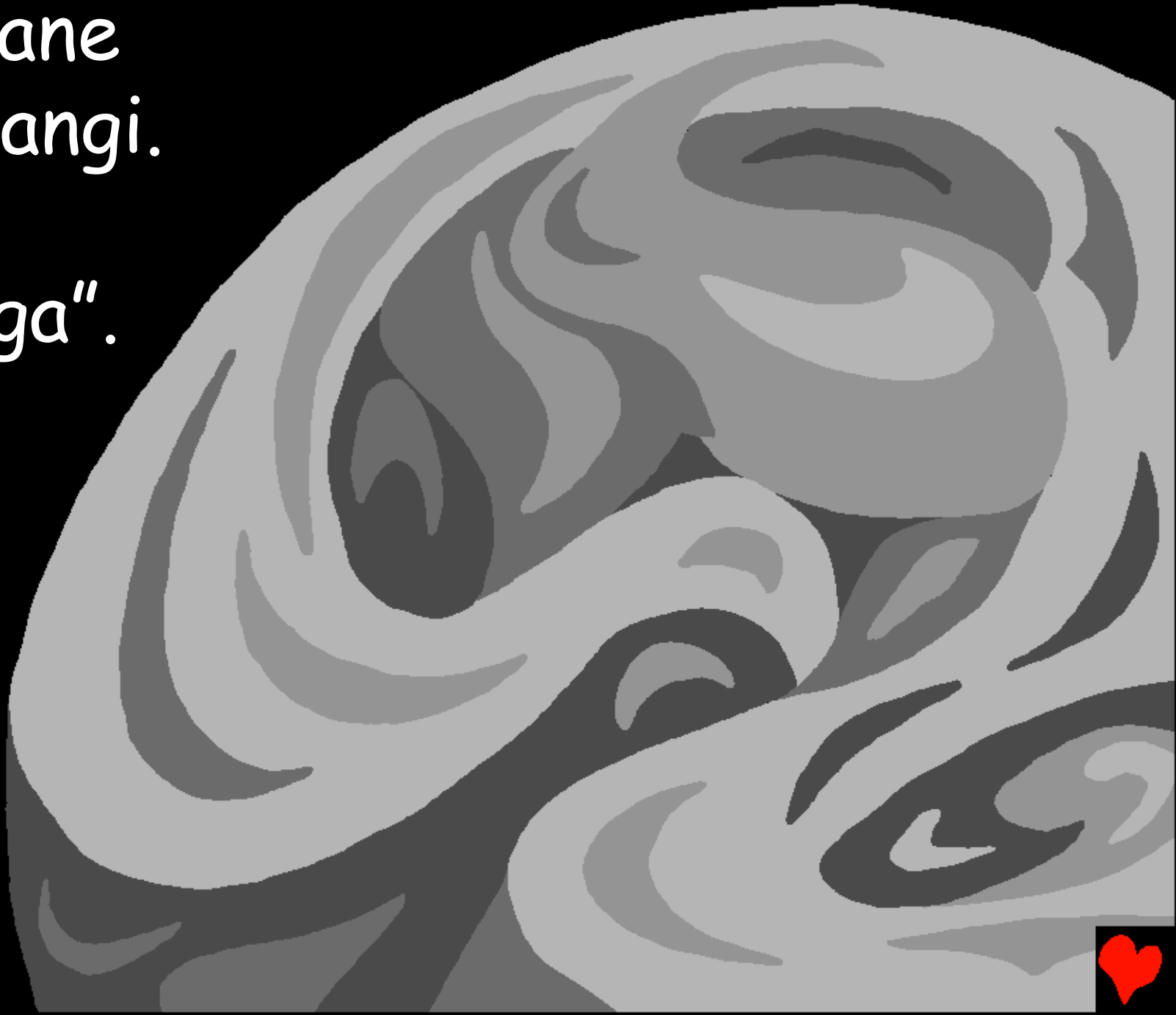
Ba mböröta, Lowalangi
andrö I'fazökhi zorugo
ba gulidanö.



Ba ulidanö lö sitoföfö
ba lö ösi. Ba no
ogömi'gömi.



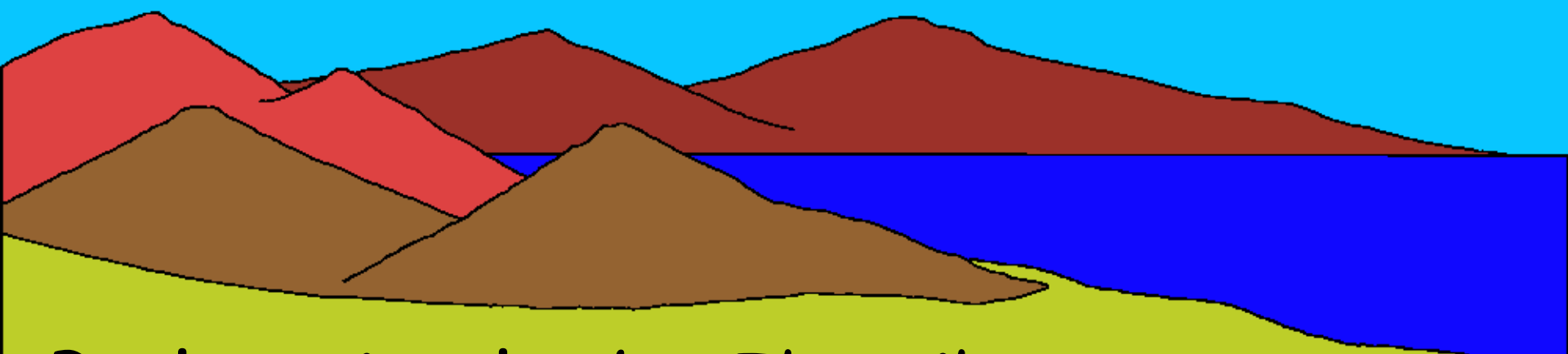
Ba imane
Lowalangi.
"Ya
mohaga".



Ba alua so haga. Ba I'fotöi haga
andrö Lowalangi yaia si ma'ökhö ba
sogömi'gömi Ifotöi si bongi. Ba
numalö zi bongi, ba tohare zi moluo,
da'ö ngaluo
si föföna.



Ba luo si dua, Lowalangi
andrö I'owuloi idanö irugi
si so barö mbanua.



Ba luo si tölu, ba I'oroï'ö
Lowalangi, "ya oroma danö
sabe'e". Ba alua zi manö.



Ba aefa da'ö I'faretakö Lowalangi
ena'ö tumbu ba
danö ngawalö
zinanö fefu, ...



... ya'ia zinanö sohunö
ba sinanö sowua
ngawalö mbua.



Ba alua zi manö. Ba numalö
zi bongi ba tohare
zi moluo, da'ö
ngaluo si tölu.



Ba aefa da'ö I'fazökhi haga andrö
ba mbanua si ya'wa ba
wohagaini ulidanö, ba
mba'wa andrö wamatörö
si ma'khö ba si böngi,
ba döfi andrö
samöfö'ö haga
ba sogömi'gömi
si tebai te'erai.



Numalö zibongi ba
tohare zi moluo,
da'ö ngaluo si öfa.



Ba aefa
da'ö, nifazökhi
Lowalangi yaia
da'ö ngawalö
gurifö simane
i'a ba nasi ba
dalu mbanua
ngawalö wofo.



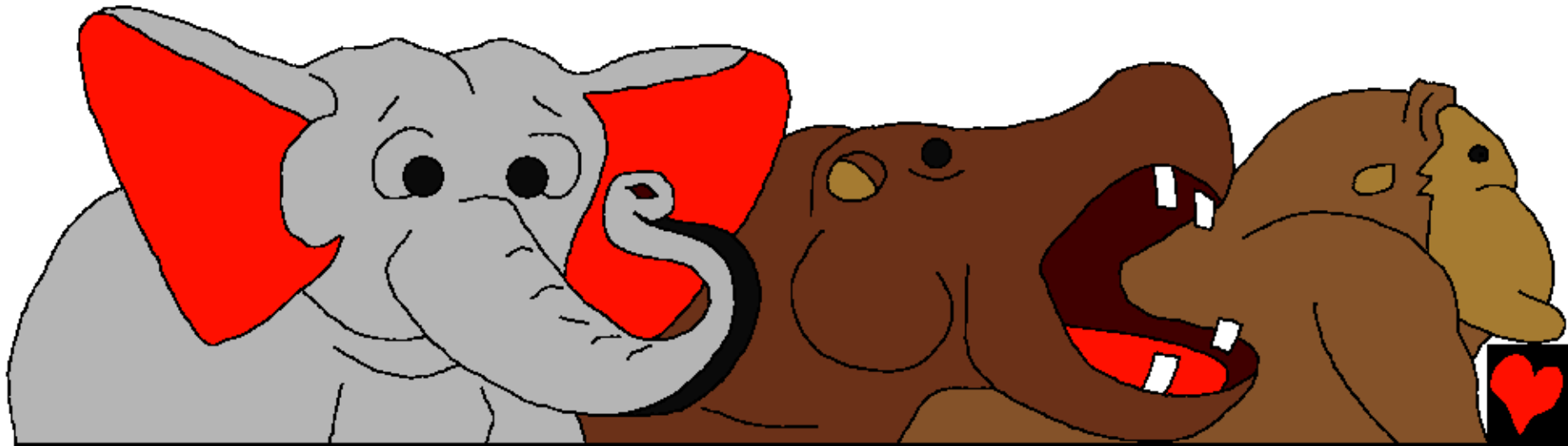
Ba ngaluo si lima
I'fazökhi ngawalö
gurifö so noso
andrö Lowalangi,
he segebua ba
he göi sigide'ide
ba simanö göi
ngawalö wofo ba
dalu mbanua.



Numalö
zi bongi
ba tohare
zi moluo,
da'ö ngaluo
si lima.



Ba aefa da'ö, ba Ifuli imane
Lowalangi "ya ibe'e baero ngawalö
so noso" gurifö tanö yaia gurifö
niha ba utu ndr'u, sebua ba he göi
side'ide, ba sanana ba danö, ba
sauri ba nidanö.



Ba fefu da'ö ba no nifazökhi
Lowalangi ba zi ma'ökhö da'ö.
Numalö zi bongi ba tohare zi
moluo, da'ö ngaluo si önö.



Ba Lowalangi Ifazökhi tanö bö'ö - si
lö fagölö. Ba fefu ba no Ihönagö

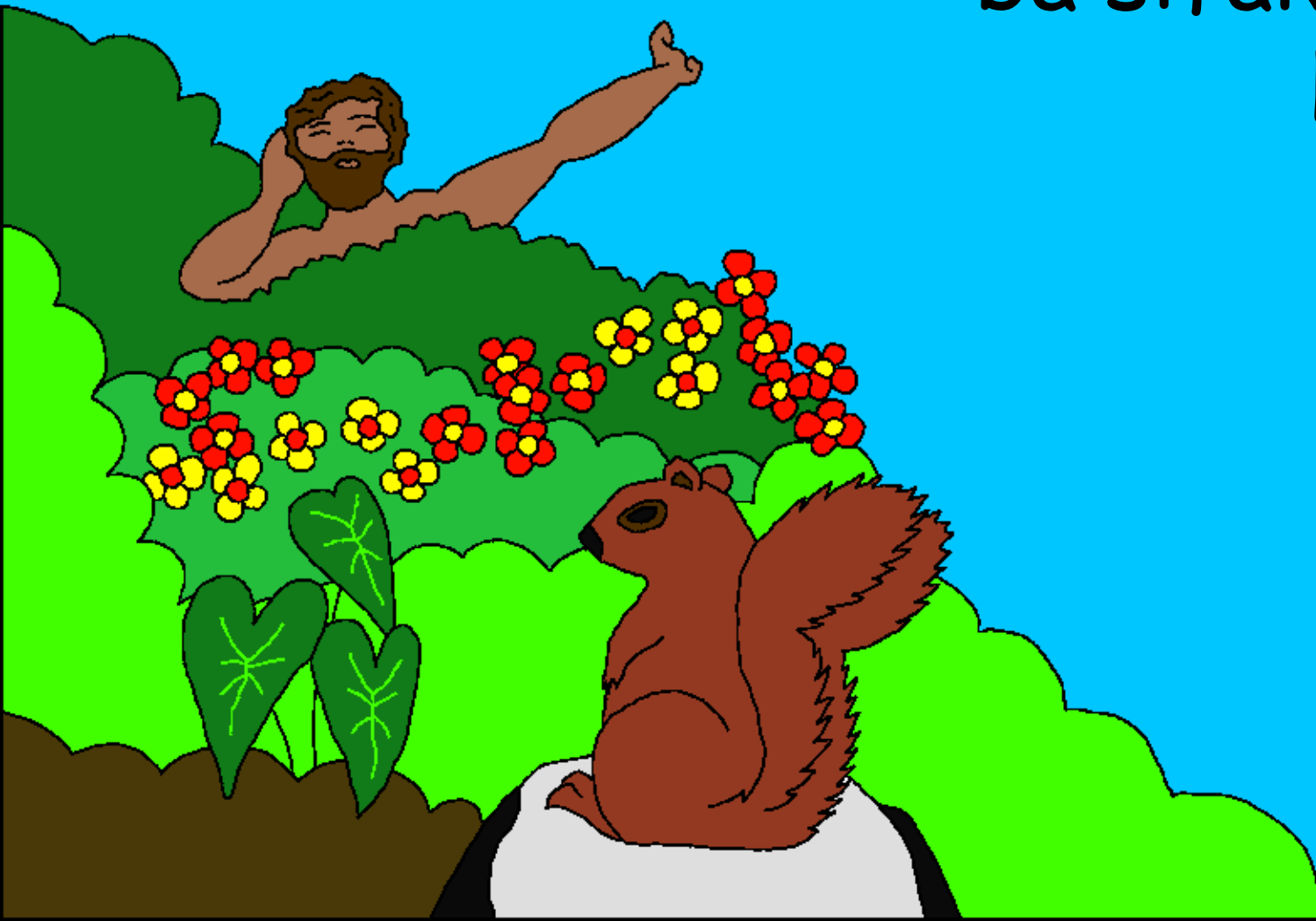
Lowalangi ba niha.

So gö moroi ba
zinanö ba kabu ba

gurifö soguna
ba niha.



Ba imane Lowalangi, ia da'e ba da
tafazökhi niha simane Ya'ita
ba sifakhilikhili
khö-Da.



Ya'ira dania zamatörö ngawalö
fefu si so ba gulidanö andre".

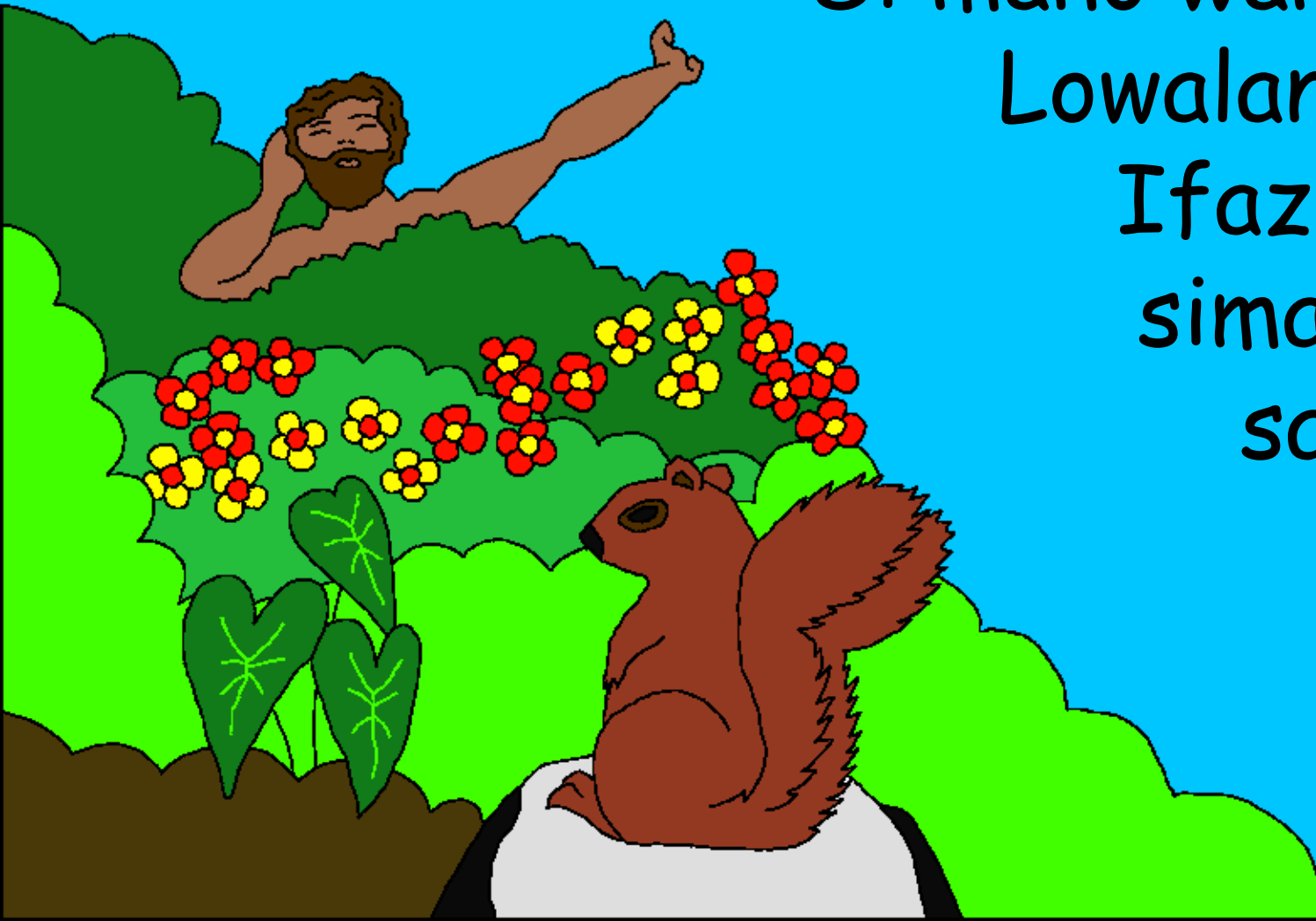
Si manö wamazökhi

Lowalangi niha,

Ifazökhi ira

simane Yaia

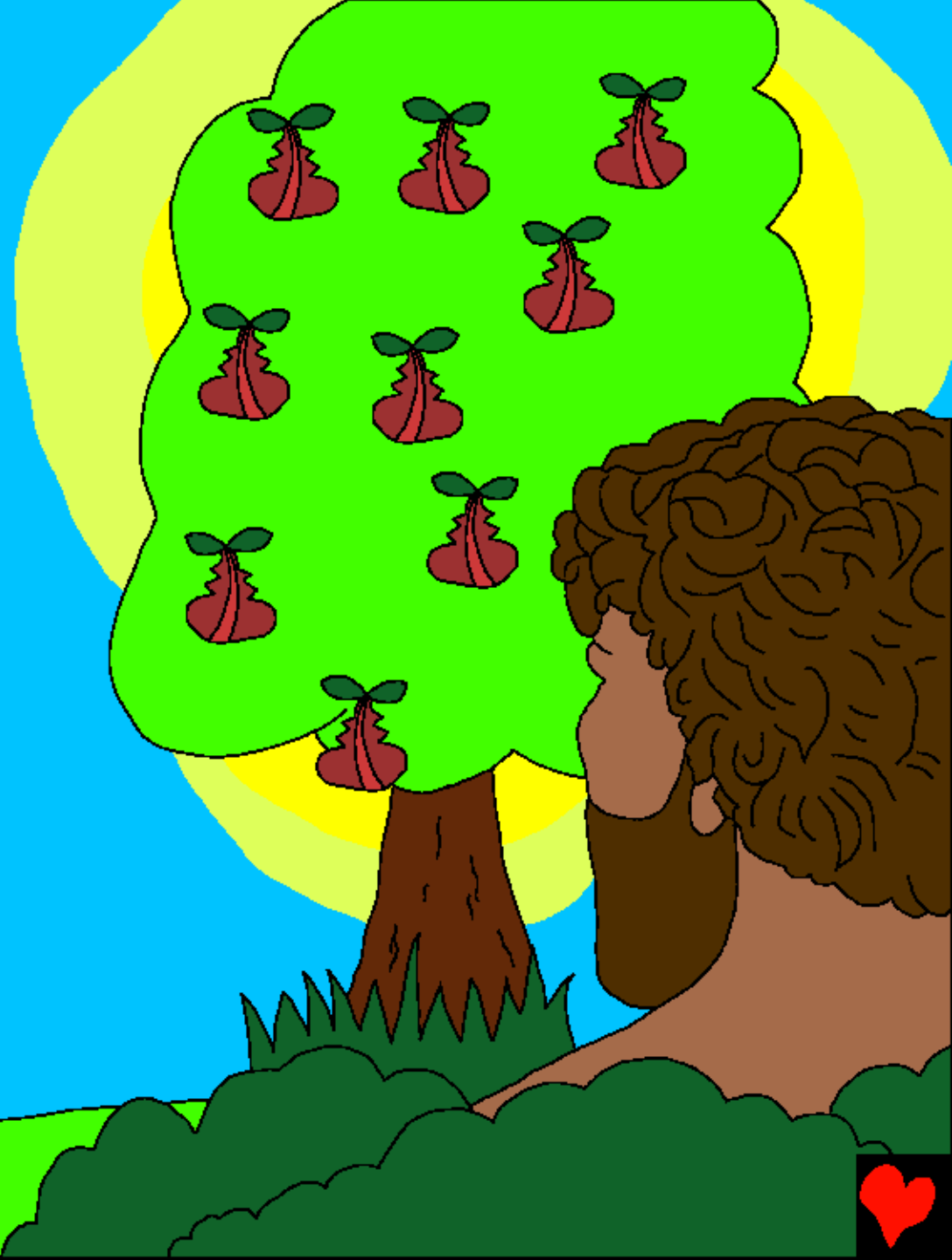
samösa ...



Ba imane
Lowalangi
khö Gadamo
"tola ö'a
fefu mbua
geu bakha
ba kabu
andre.



Ba hiza'i tebai
ö'a mbua geu
si so ba dalu
kabu. Ba na
ö'a mbua geu
andrö ba si
mate ndra'ugö".



Ba imane Yehowa Lowalangi, "Lö
sökhi ba niha na ha ya'iya'ia. Da
Ufazökhi khönia nawö."

Ba Lowalangi iowuloi
fefu he gurifö ba he
wofo andrö ba iohe

khö
Gadamo.



Ena'ö ifotoi fefu
gurifö andrö. Ba hiza
lö sinange sitobali
awö khö Gadamo.



Ba Lowalangi ifemörö sabölöbölö
niha andrö. Ba me no mörö ia,
ba Ihalö sara döla
nosu niha andrö, ba
Ifazökhi ndra
alawe moroi
ba döla nosu
andrö.



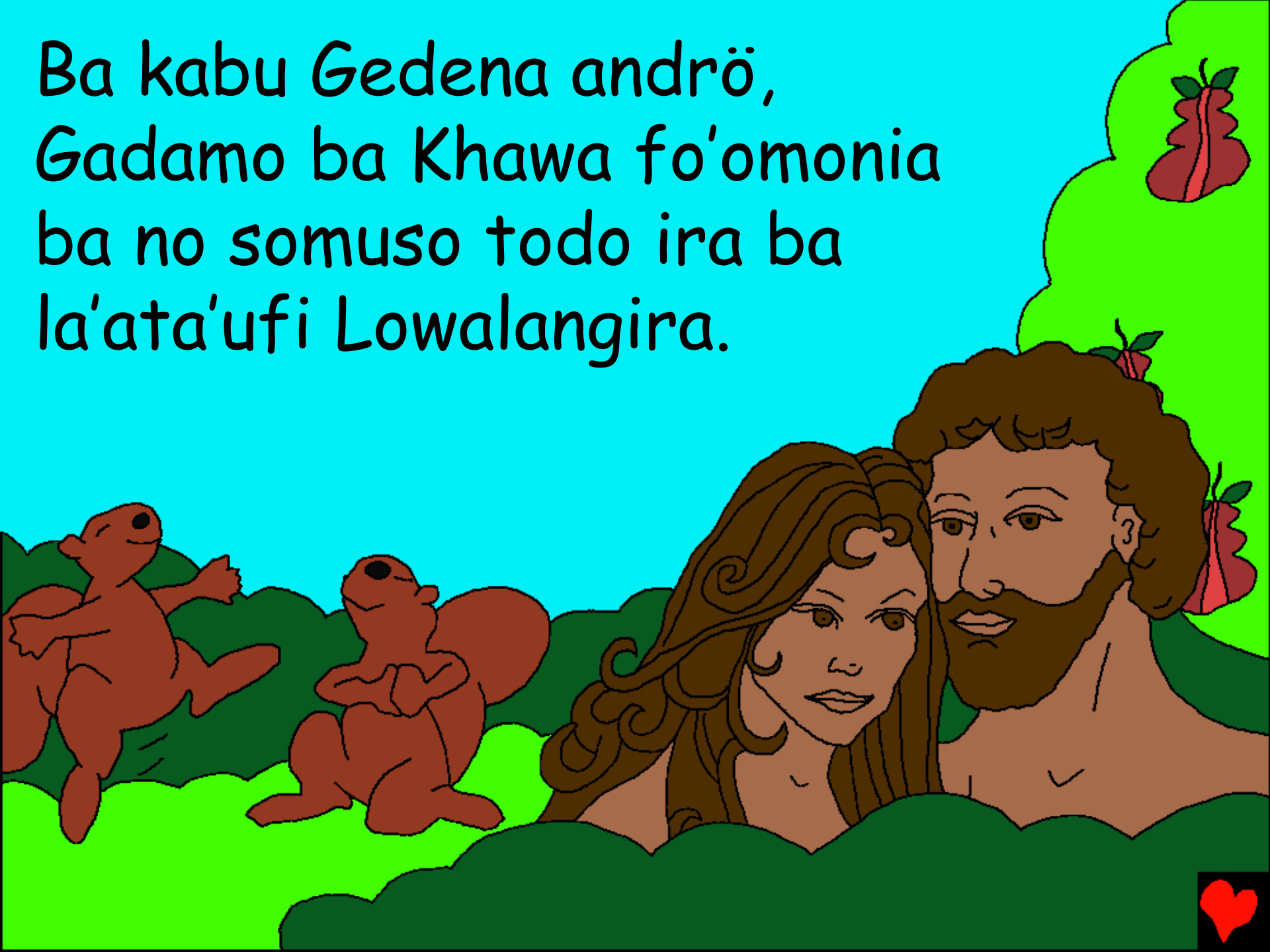
Ba sindruhu wamazökhi
Lowalangi andrö ira
alawe sitobali awö
si sökhi khö
Gadamo.



Ba Lowalangi ifazökhi fefu da'ö
önö ngaluo fa'ara. Aefa da'ö
Ifahowuö Lowalangi luo si
fitu ba ibe'e töi luo andrö
luo wolombase.



Ba kabu Gedena andrö,
Gadamo ba Khawa fo'omonia
ba no somuso todo ira ba
la'ata'ufi Lowalangira.



Yehowa Lowalangi andrö
ba no Samazökhi fefu si
so ba gulidanö andre, ba
sitobali awö ia khöra.



Ba mböröta me Lowalangi andrö
I'fazökhi fefu hadia ia

Sambua nidunö'dunö sitobali goroisa
Lowalangi

Tesondra ba

I Moze 1-2

"Famahaö Lowalangi andrö ba ibe'e
haga." Sura Sinunö 119:130



Afuriata



Ba buku daromali Lowalangi da'a ba
te'ombakha'ö khöda wa'abölö Lowalangi ba
wamazökhi yaita ba ena'ö göi ta'ila Ia.

Ba I'ila Lowalangi fefu hadia ia si lö sökhi
nifaluada, ba latötöi niha andrö yaia horö. Ba
huku horö andrö ba fa'amate, ba hiza
Lowalangi I'omasiö sibai niha irege Ifatenge
nono-Nia si hasamösa, Yesu andrö mate ba
döla röfa ba ni'huku börö fefu horöda. Ba hiza
Ifuli maoso ia ba mangawuli Ia ba zorugo. Ba
na faduhu dödömi khö Yesu ba mi'andrö
fangefa ba horömi andrö, ba I'efa'ö. Ba ifuli
so dania ba wa'aurida, ba so wa'auri andrö ba
khöNia irege ba zi lo aetu.



Ba na faduhu dödöu ba zura andre,
ba ömane khö Lowalangi:
khö Yesu, mamatido khöu wa Zo'aya ndra'ugö
ba no tobali ösi niha ba wa'amate börö horö
andrö fefu, ba iada'a ba no auri ia. Ena'ö
mi'ae'e ba wa'aurigu ba efa'ö fefu horögu,
irege usöndra fa'auri sibohou, ba samuza
ma'ökhö ba sifao khö Lowalangi irugi zi lö
aetu. Ba fasugi khögu ba wolo'o ba sauri ba
khoNia simane nonoNia andrö, yaduhu.

La baso buku daroma li Lowalangi andrö ba
fahuhuo khö Lowalangi seroma'ökhö!

Yohane 3:16

