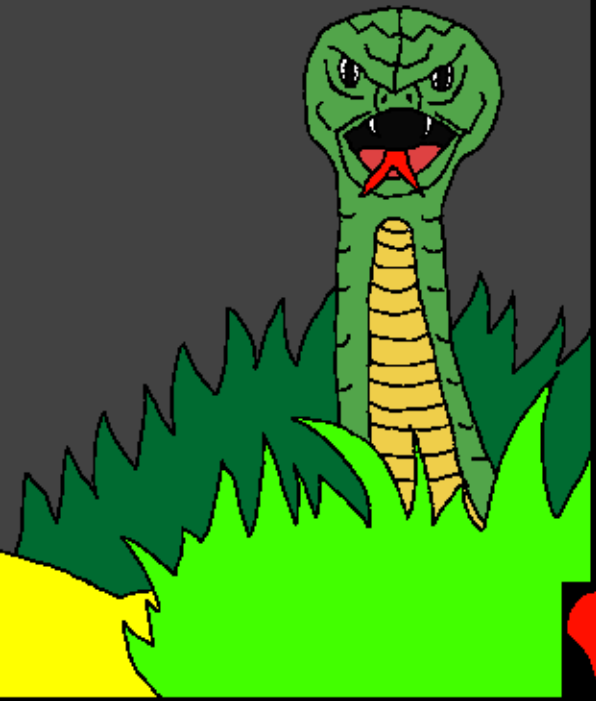


Baebele ya bana
E tlesa

Go sa utlwing
ga batho



E kwetse ke: Edward Hughes

E bontsitshwe ke: Byron Unger; Lazarus
Alastair Paterson

E lomagantswe ke: M. Maillot; Tammy S.

E phetotswe:

E ntshitswe ke: Bible for Children
www.M1914.org

©2020 Bible for Children, Inc.

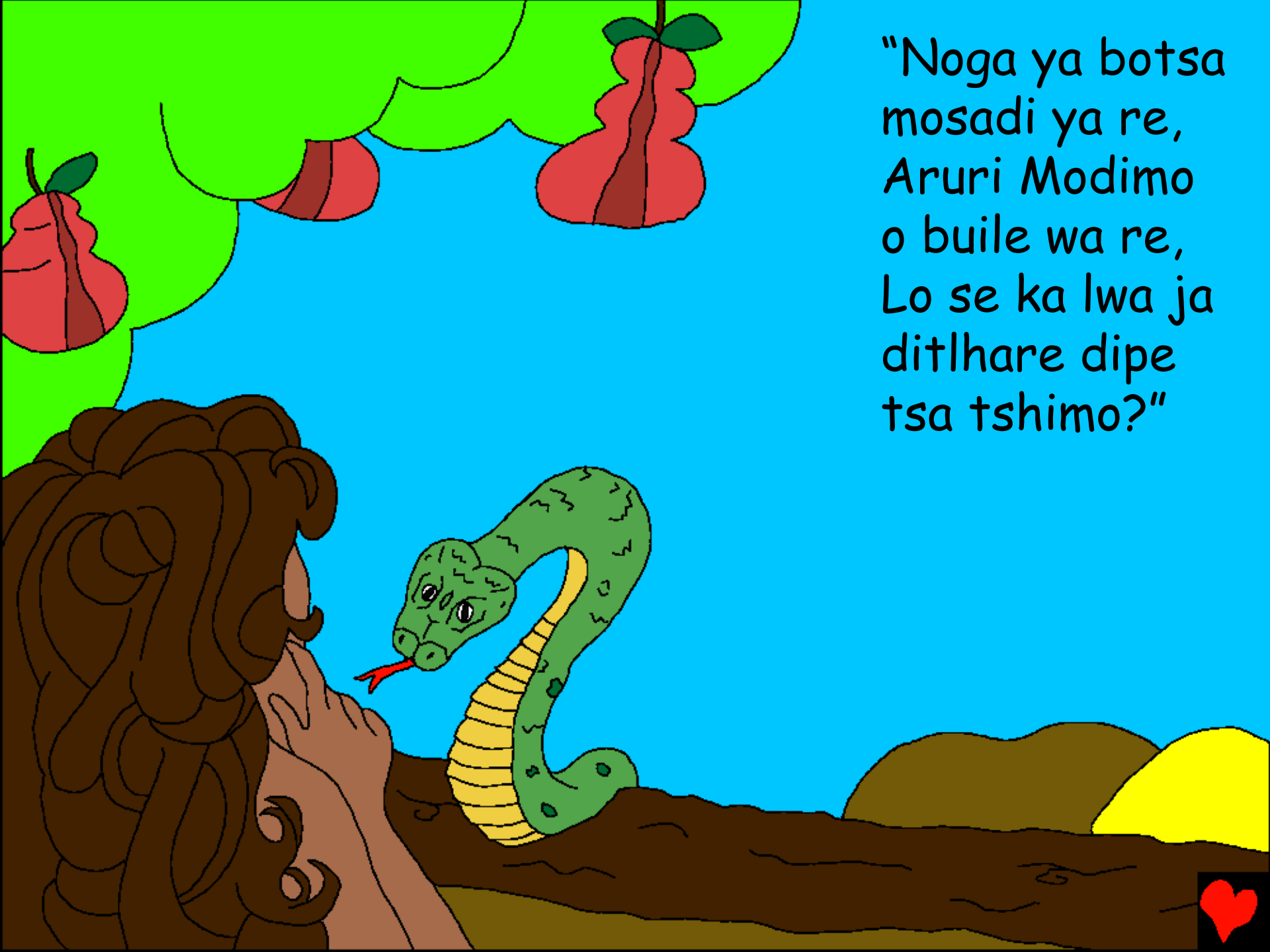
Letlelelo: O na le tshwanelo ya go lebelela kgotsa go kwala
polelo e, fela ga o sa e rekisi.




Modimo o dirile dilo tsothle! Fa
Modimo a dira motho wa ntlha,
Atame, o phetse mo tshimong ya
etene le mosadi wa gagwe, Eve. Ba
ne ba itumetse thata
abe a obamela Modimo.
Letsatsi le
lengwe ...



"Noga ya botsa
mosadi ya re,
Aruri Modimo
o buile wa re,
Lo se ka lwa ja
ditlhare dipe
tša tshimo?"





Kefa mosadi
araba noga a re
"Go tilwe, re je
maungo a ditlhare tsa
tshimo. Fela Modimo
o buile ka ga maungo a
setlhare se se fagare
ga tshimo wa re; Lo se
ka lwa ja le e seng go a
ama, e se re gongwe
lwa swa."



Mme noga ya
raya mosadi ya
re: "Nnyaya, ga
lo kitla lo swa."



“Lo tshwana le Modimo” Eve o ne a batla leungo lwa setlhare. a utlwela noga a ja leungo.



Mosadi a tlhoka go utlwelela Modimo, a naya le monna wa gagwe yo o neng a a nna nae, mme le ene a ja. Monna ene o ne a tshwanetse go gana.





Monna le mosadi baleofa, ba
lemoga gore ga ba a tswala; ba
rokaganya matlhare a mofeie, ba
itirela ditswalo. Ba iphitlhela Modimo.



Jaanong ya re ba utlwa mokgwasa wa Modimo o sepela mo tshimong go le phefo ya mantsiboa, o ne a itsi gore monna le mosadi ba dirile eng, mme ba supana ka menwana. Modimo a rogakana noga, mosadi ene a mo raya gore o tla belega bana botlhoko.



"Atame ka gore o leofile,
masimo a hutsitswe ka
ntlha ya gago. A tla go
tlhogela mitlwa le ngwang;
o tla ja dijo ka mofufutso
wa sefatlhego sa gago."



Modimo a ntsha
Atame le Efa mo
tshimong ya
Etene ka gore
baleofile, ba
kgaogana le
Modimo!





Modimo a dira tshaka ya
molelo go ba ntshetsa kwa
ntle. Modimo a ba direla
di aparo. Modimo
o tsere
matlalo
kae?



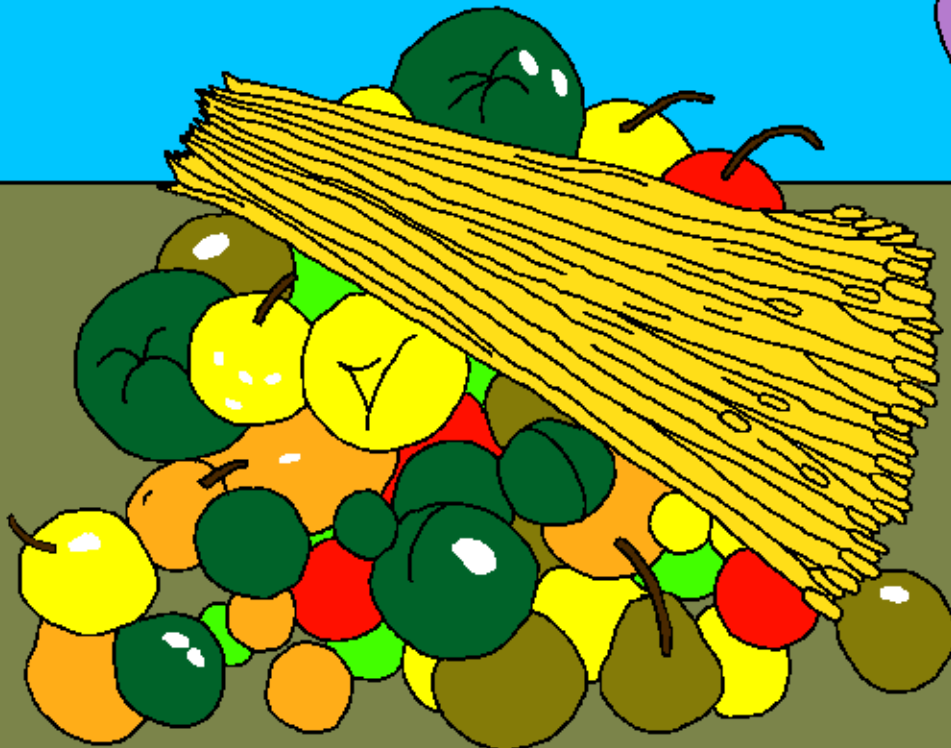
Atame o ne a itsi Efa, mosadi wa gagwe; ke fa a nna moimana, a belega ngwana wa ntlha e le Kaine e leng molemi. Ngwana wa bobedi, Abele e leng modisa.



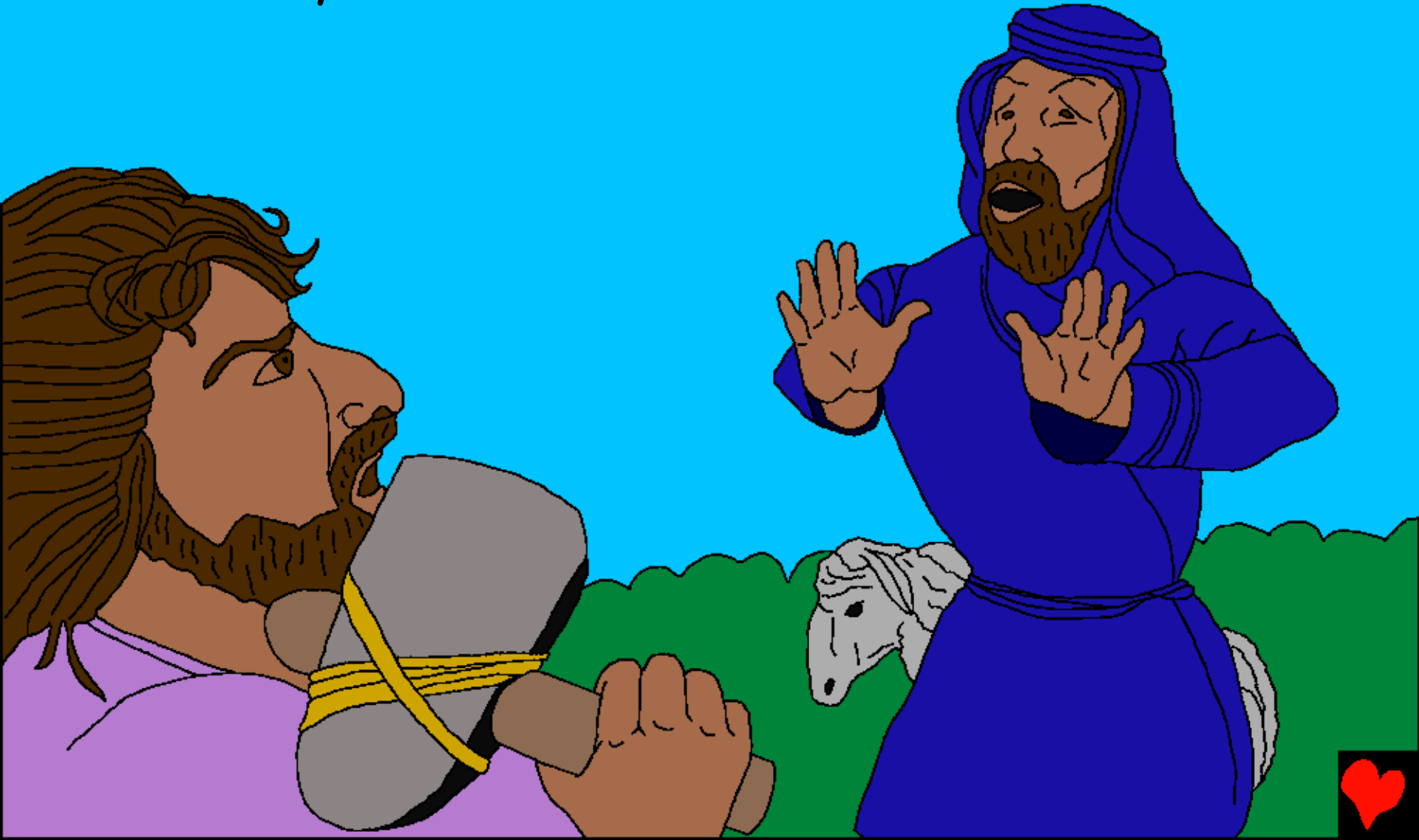
Tsatsi lengwe Kaine a tlišetsa Modimo merogo jaaka mpho. Abele a tlišetsa Modimo nku e e nonofileng jaaka mpho. Modimo a itumelela mpho ya ga Abele.



Modimo ga a ka a itumelela mpho
ya ka Kaine. Kaine a galefa thata.
Modimo a re "ga o sa dire se se
siameng, ga o kitla o amogelwa."



Bogale jwa Kain ba gola thata,
nako e engwe mo tshimong,
Kain a bolaya Abele.



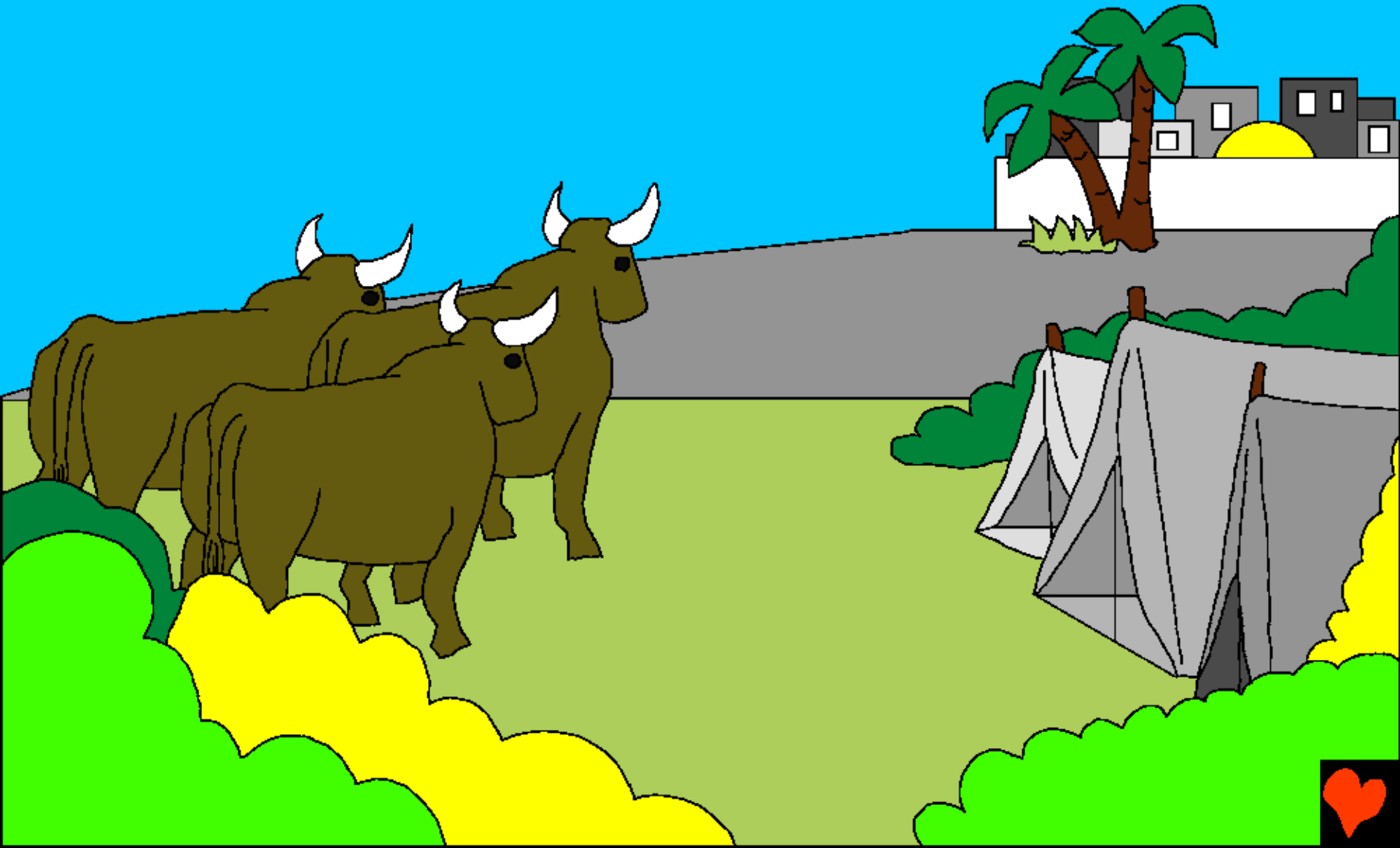
Modimo a bua le Kaine. "O kae Abele monnawe?" "Ga ke itse," a fetola maka Kaine. "Ga ke motlhokomedi wa monnawe?" Modimo a hutsa Kaine.



Kaine a tswa a tsamaya mo go bogoneng jwa Modimo. A nyala Ngwana wa Atame le Efa. Ba nna le lelapa.



Ditlogolwana tsa Kaine
dia tlala naga yotlhe.



Mo nakong eo, lelapa lwa Atame le
Efa lwa golela ka bonako. Batho ba
phela nako e e telele mo lefatsheng
go sa tshwane le malatsi ana.



Ga belegwa morwa wa gagwe Sethe, Efa are, Modimo o mphile ngwana yo mongwe boemong jwa Abele. Sethe e ne e le monna yo a ratang Modimo, a phela di ngwaga di le 912. A nna le bana ba bangwe.



Mo lefatsheng, batho ba
tlala ebile ba tlala ka go dira
bosula. Modimo a akanya go
senya lefatshe lotlhe.



... diphologolo tsothe le
dinonyane. Modimo a ikotlaya
gore, goreng a dirile motho.
Monna a le mongwe a kgatlha
Modimo ...



Monna o na, e ne e le Noa.
Wa losika lwa ga Sethe, Noa
e ne e le monna yo o siameng,
a se na molato. A
tsamaya le modimo.



O ne a ruta barwa ba gwe ba
le bararo go obamela Modimo.
Modimo a akanya go dirisa Noa
ka tsela e e makatsang!



Go sa utlwing ga batho

Polelo gotswa mo lefokong la Modimo, Baibele,
e fitlheletswe mo

Genesi 3-6

"Botseno jwa mafoko a gogo bo fa lesadi."
Pesalome 119:130



Bo khutlo



Baibele e re bolelela ka Modimo o
montle o re direleng ebile o batla gore re moitse.

Modimo wa itsi gore re dirile dilo tse disasiamang,
tseo a dibitsang sebe. Kotlo ya sebe ke lesa, Modimo o go rata
thata, o rometse morwa wa gagwe a le esi fela, Jesu, gore swela
sefapanong ka ntlha ya dibe tsa gago. Jesu a phela gape a ya gae
legodimong! Fa o dumela mo morena Jesu, o mokopa gore a go
itshwarele dibe tsago, o tla e tsa jalo a phele mo go wena,
o tla phela le ena go ya bosakhutleng.

Ga o dumela gore se ke nnete, bua se go modimo:
Morena Jesu, ke a dumela gore o Modimo, wa nna motho o
swetseng dibe tsa rona, jaanong o phela gape. Ke kopa o tsene
mo bophelong jwame, o intshwarele dibe tsame, gore ke tle ke
nne le bophelo jo boshwa, tsatsi le lengwe ke nne le wena
go ya bosakhutlheng. Nthuse ke go obamele, ketele ke
go phelele jaaka ngwana wa gago. Amen!

Bala Baibele, o bua le Modimo tsatsi le letsatsi! Johane 3:16

