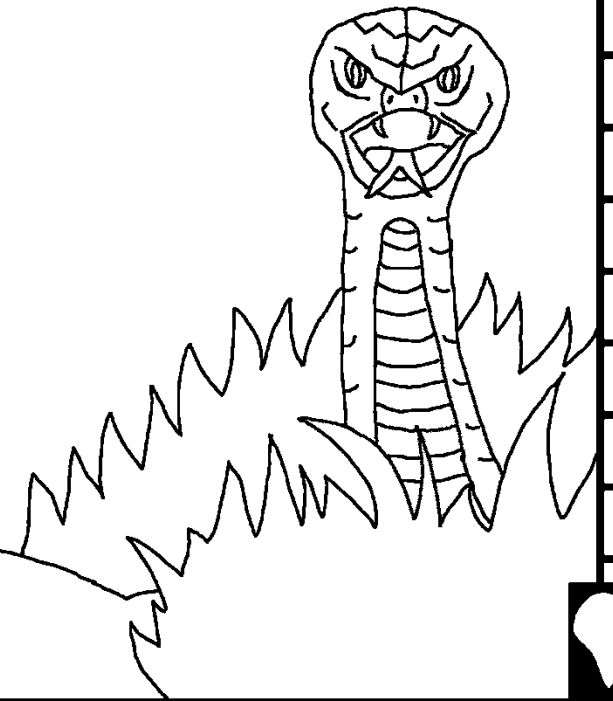


Baebele ya bana
E tlesa

Go sa utlwing
ga batho



E kwetse ke: Edward Hughes
E bontsitshwe ke: Byron U.; Lazarus; Alastair P.
E lomagantswe ke: M. Maillot; Tammy S.
E phetotswe:
E ntshitswe ke: Bible for Children
www.M1914.org

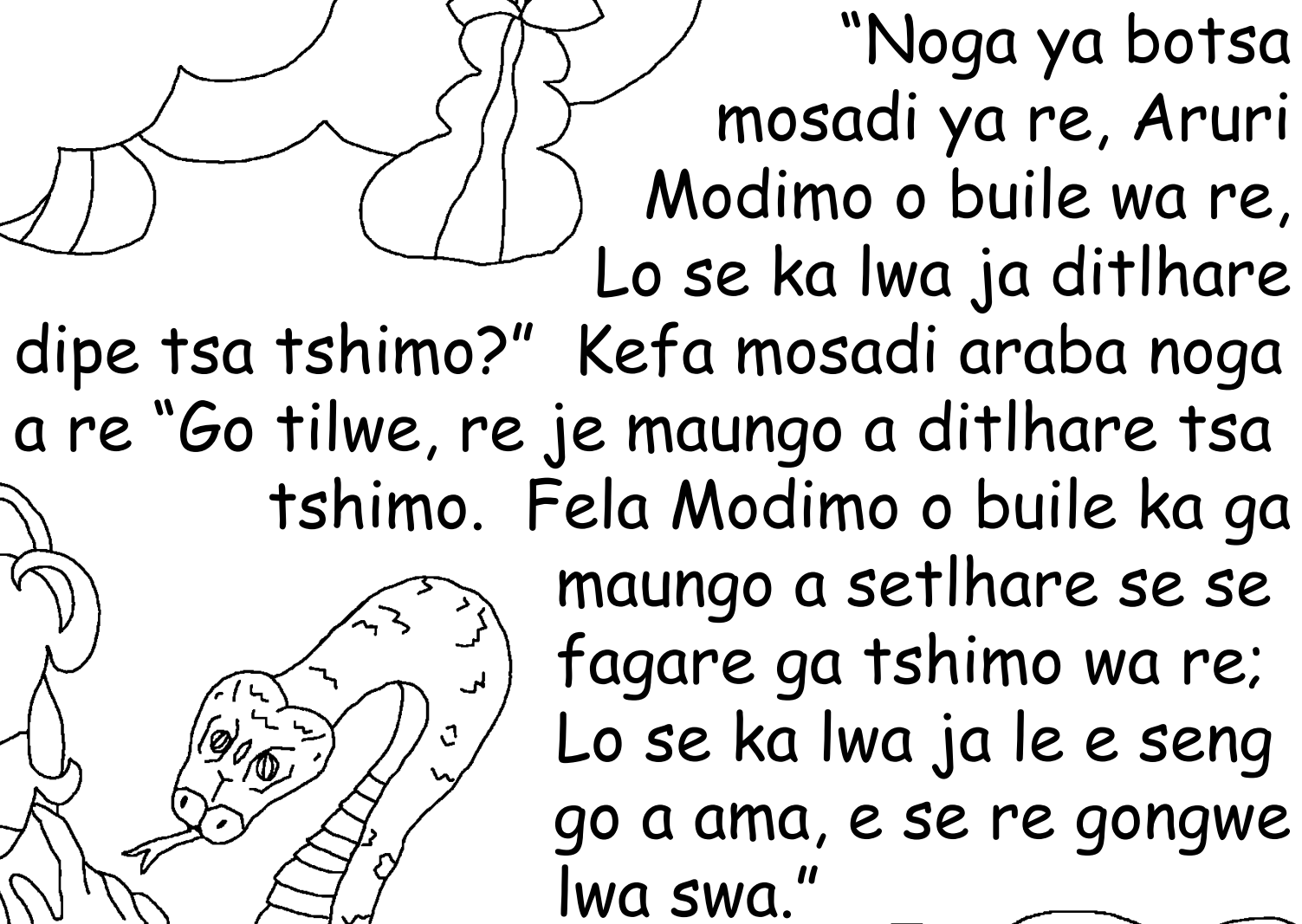
BFC
PO Box 3
Winnipeg, MB R3C 2G1
Canada

©2021 Bible for Children, Inc.
Letlelelo: O na le tshwanelo ya go lebelela kgotsa go kwala
polelo e, fela ga o sa e rekisi.



Modimo o dirile dilo tsothe! Fa
Modimo a dira motho wa ntlha,
Atame, o phetse mo tshimong ya
etene le mosadi wa gagwe, Eve. Ba
ne ba itumetse thata
abe a obamela Modimo.
Letsatsi le
lengwe ...

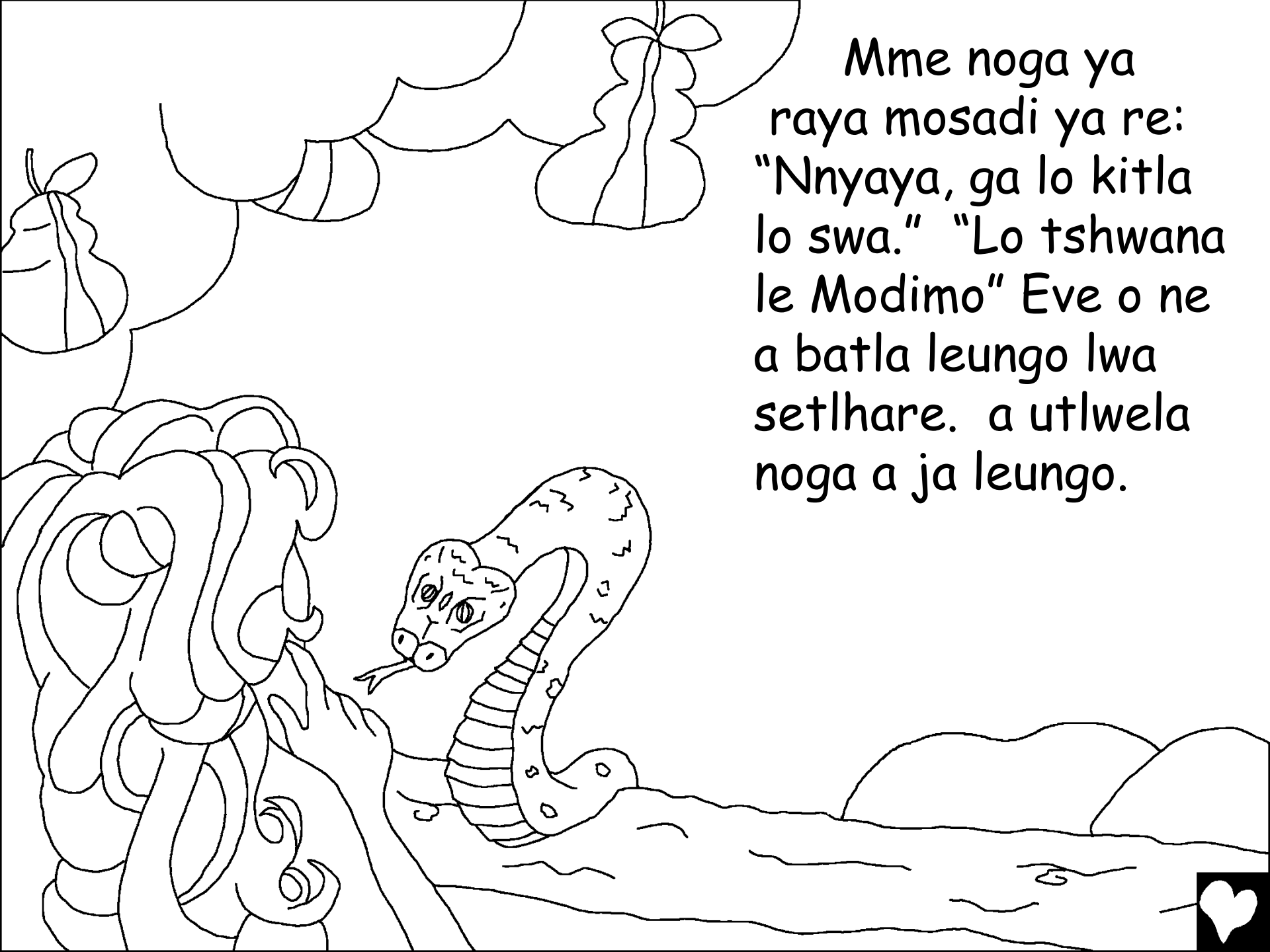




"Noga ya botsa mosadi ya re, Aruri Modimo o buile wa re, Lo se ka lwa ja ditlhare dipe tsa tshimo?" Kefa mosadi araba noga a re "Go tilwe, re je maungo a ditlhare tsa tshimo. Fela Modimo o buile ka ga maungo a setlhare se se fagare ga tshimo wa re; Lo se ka lwa ja le e seng go a ama, e se re gongwe lwa swa."



Mme noga ya
raya mosadi ya re:
"Nnyaya, ga lo kitla
lo swa." "Lo tshwana
le Modimo" Eve o ne
a batla leungo lwa
setlhare. a utlwela
noga a ja leungo.



Mosadi a tlhoka go utlwelela
Modimo, a naya le monna wa
gagwe yo o neng a a nna nae,
mme le ene a ja. Monna ene o
ne a tshwanetse
go gana.





Monna le mosadi baleofa, ba
lemoga gore ga ba a tswala; ba
rokaganya mathhare a mofeie, ba
itirela ditswalo. Ba iphitlhela Modimo.



Jaanong ya re ba utlwa mokgwasa wa Modimo o sepela mo tshimong go le phefo ya mantsiboa, o ne a itsi gore monna le mosadi ba dirile eng, mme ba supana ka menwana. Modimo a rogakana noga, mosadi ene a mo raya gore o tla belega bana botlhoko. "Atame ka gore o leofile, masimo a hutsitswe ka ntlha ya gago. A tla go tlhogela mitlwa le ngwang;

o tla ja dijo ka mofufutso wa sefatlhego sa gago."





Modimo a ntsha

Atame le Efa mo tshimong ya Etene
ka gore baleofile, ba kgaogana le
Modimo! Modimo a dira tshaka
ya molelo go ba ntshetsa
kwa ntle. Modimo a ba
direla di aparo.
Modimo o tsere
matlalo kae?

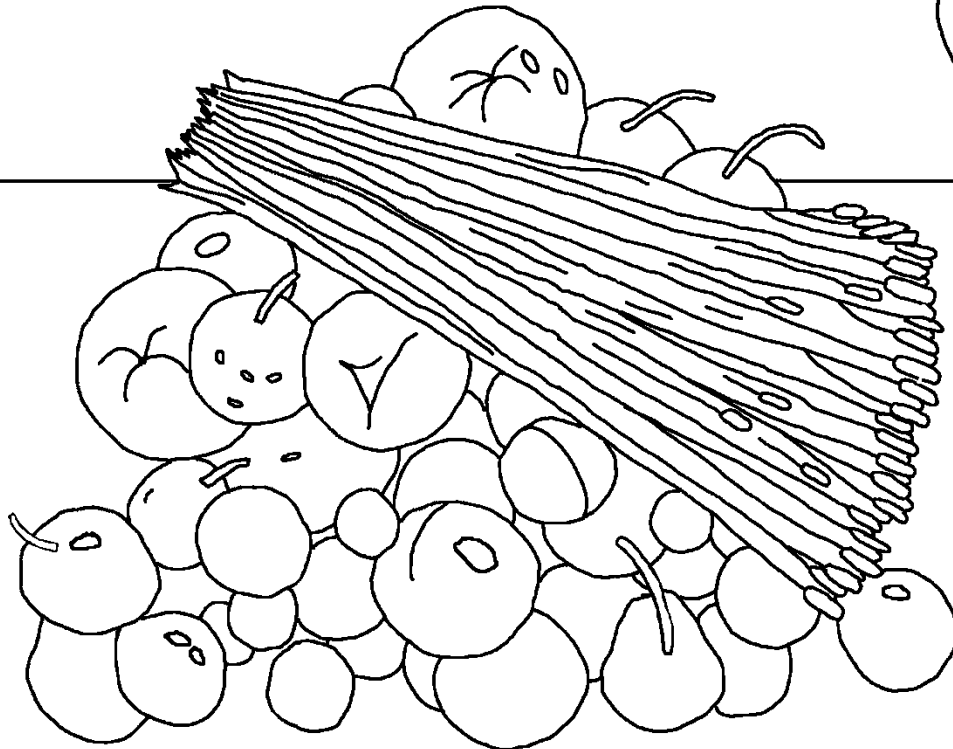


Atame o ne a itsi Efa, mosadi wa gagwe; ke fa a nna moimana, a belega ngwana wa ntlha e le Kaine e leng molemi. Ngwana wa bobedi, Abele e leng modisa.

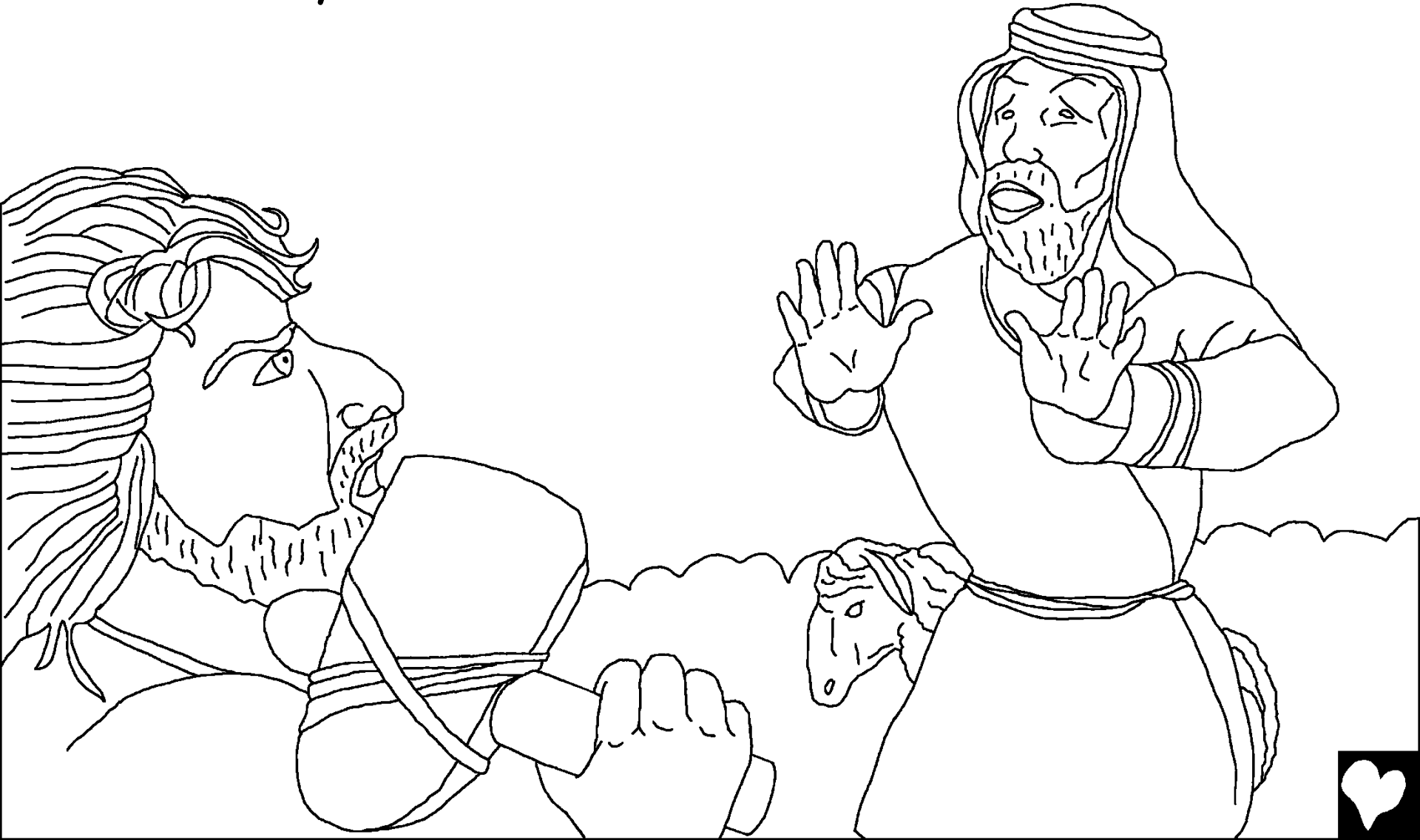
Tsatsi lengwe Kaine a tlišetsa Modimo merogo jaaka mpho. Abele a tlišetsa Modimo nku e e nonofileng jaaka mpho. Modimo a itumelela mpho ya ga Abele.



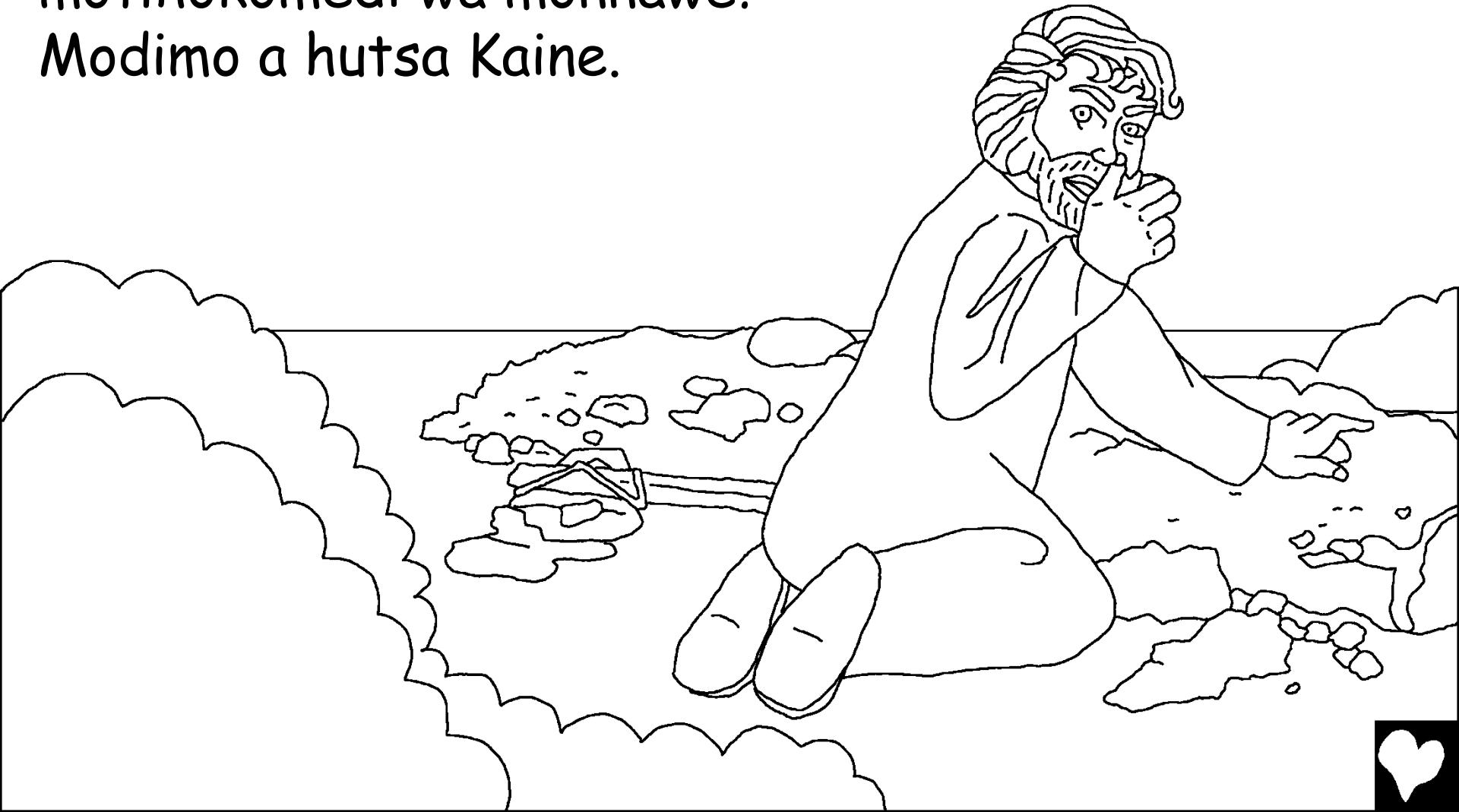
Modimo ga a ka a itumelela mpho
ya ka Kaine. Kaine a galefa thata.
Modimo a re "ga o sa dire se se
siameng, ga o kitla o amogelwa."



Bogale jwa Kain ba gola thata,
nako e engwe mo tshimong,
Kain a bolaya Abele.



Modimo a bua le Kaine. "O kae Abele monnawe?" "Ga ke itse," a fetola maka Kaine. "Ga ke motlhokomedi wa monnawe?" Modimo a hutsa Kaine.



Kaine a tswa a tsamaya mo go bogoneng jwa Modimo. A nyala Ngwana wa Atame le Efa. Ba nna le lelapa. Ditlogolwana tsa Kaine dia tlala naga yotlhe.



Mo nakong eo, lelapa lwa Atame le
Efa lwa golela ka bonako. Batho ba
phela nako e e telele mo lefatsheng
go sa tshwane le malatsi ana.



Ga belegwa morwa wa gagwe Sethe, Efa are, Modimo o mphile ngwana yo mongwe boemong jwa Abele. Sethe e ne e le monna yo a ratang Modimo, a phela di ngwaga di le 912. A nna le bana ba bangwe.



Mo lefatsheng, batho ba tlala ebile ba tlala
ka go dira bosula. Modimo a akanya go
senya lefatshe lotlhe. diphologolo
tsothe le dinonyane. Modimo a
ikotlaya gore, goreng a dirile
motho. Monna a
le mongwe a



kgatla
Modimo ...



Monna o na, e ne e le Noa. Wa losika lwa ga
Sethe, Noa e ne e le monna yo o siameng, a se
na molato. A tsamaya le modimo. O ne
a ruta barwa ba gwe ba le bararo
go obamela Modimo.
Modimo a akanya
go dirisa
Noa

ka tsela e e
makatsang!



Go sa utlwing ga batho

Polelo gotswa mo lefokong la Modimo, Baibele,
e fitlheletswe mo

Genesi 3-6

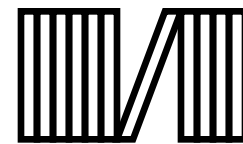
"Botseno jwa mafoko a gogo bo fa lesadi."
Pesalome 119:130



Bo khutlo



2



60



Baibele e re bolelela ka Modimo o
montle o re direleng ebile o batla gore re moitse.

Modimo wa itsi gore re dirile dilo tse disasiamang,
tseo a dibitsang sebe. Kotlo ya sebe ke lesa, Modimo o go rata
thata, o rometse morwa wa gagwe a le esi fela, Jesu, gore swela
sefapanong ka ntlha ya dibe tsa gago. Jesu a phela gape a ya gae
legodimong! Fa o dumela mo morena Jesu, o mokopa gore a go
itshwarele dibe tsago, o tla e tsa jalo a phele mo go wena,
o tla phela le ena go ya bosakhutleng.

Ga o dumela gore se ke nnete, bua se go modimo:
Morena Jesu, ke a dumela gore o Modimo, wa nna motho o
swetseng dibe tsa rona, jaanong o phela gape. Ke kopa o tsene
mo bophelong jwame, o intshwarele dibe tsame, gore ke tle ke
nne le bophelo jo boshwa, tsatsi le lengwe ke nne le wena
go ya bosakhutlheng. Nthuse ke go obamele, kotle ke
go phelele jaaka ngwana wa gago. Amen!

Bala Baibele, o bua le Modimo tsatsi le letsatsi! Johane 3:16

