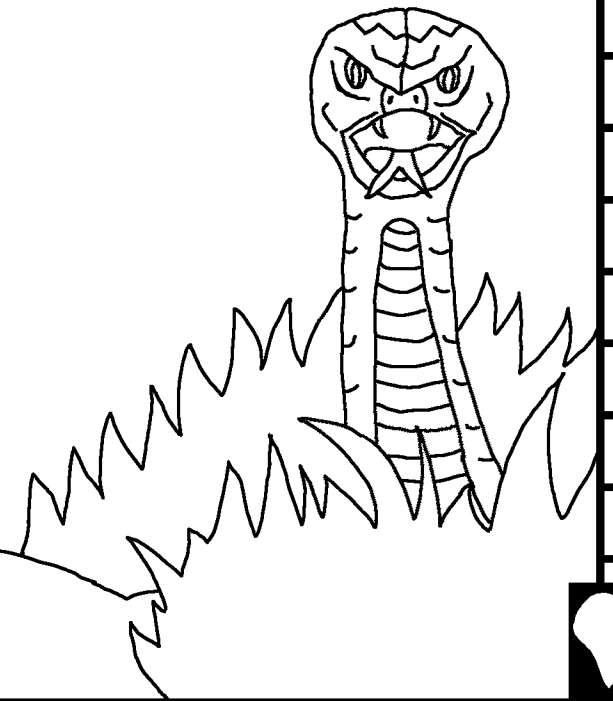


Baibulo ya bana
Yakubweleselani

Kuyamba kwa
chisoni cha
munthu



Yolembewa na: Edward Hughes

Yofotokozewa na: Byron Unger; Lazarus;
Alastair Paterson

Yosinthiwa na: M. Maillot; Tammy S.

Yantanthauliziwa na:
www.christian-translation.com

Yochosedwa na: Bible for Children
www.M1914.org

©2022 Bible for Children, Inc.

Chitupa: Muli na danga yojambula nakutulusa koma osagulisa.

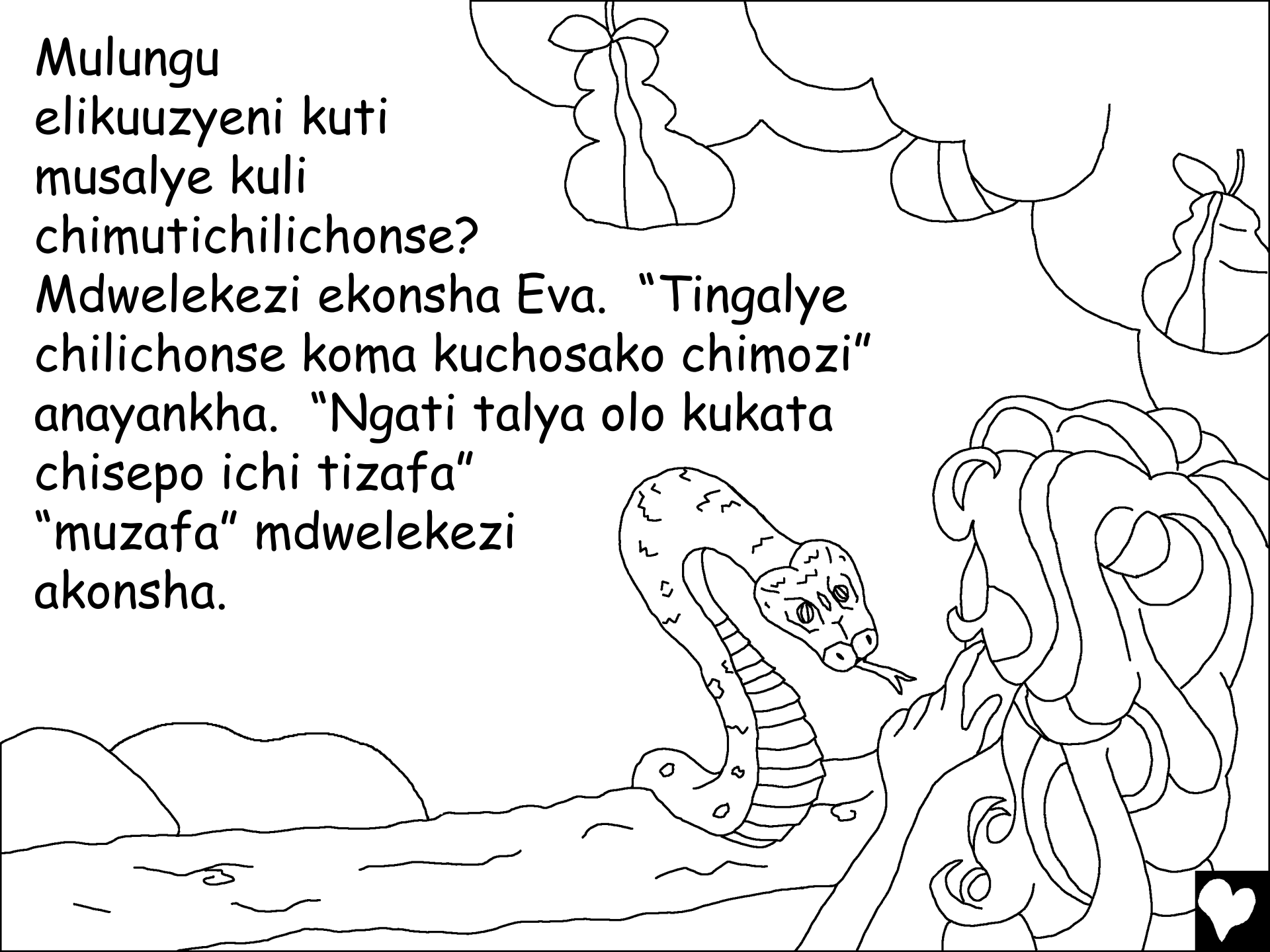


Mulungu anapanga, pamene mulungu
anapanga adam, anankhala m'munda
wa eden na mkazi wake eva. Benze
okondwela na kulemekeza mulungu
mpaka nsiku imozi ...

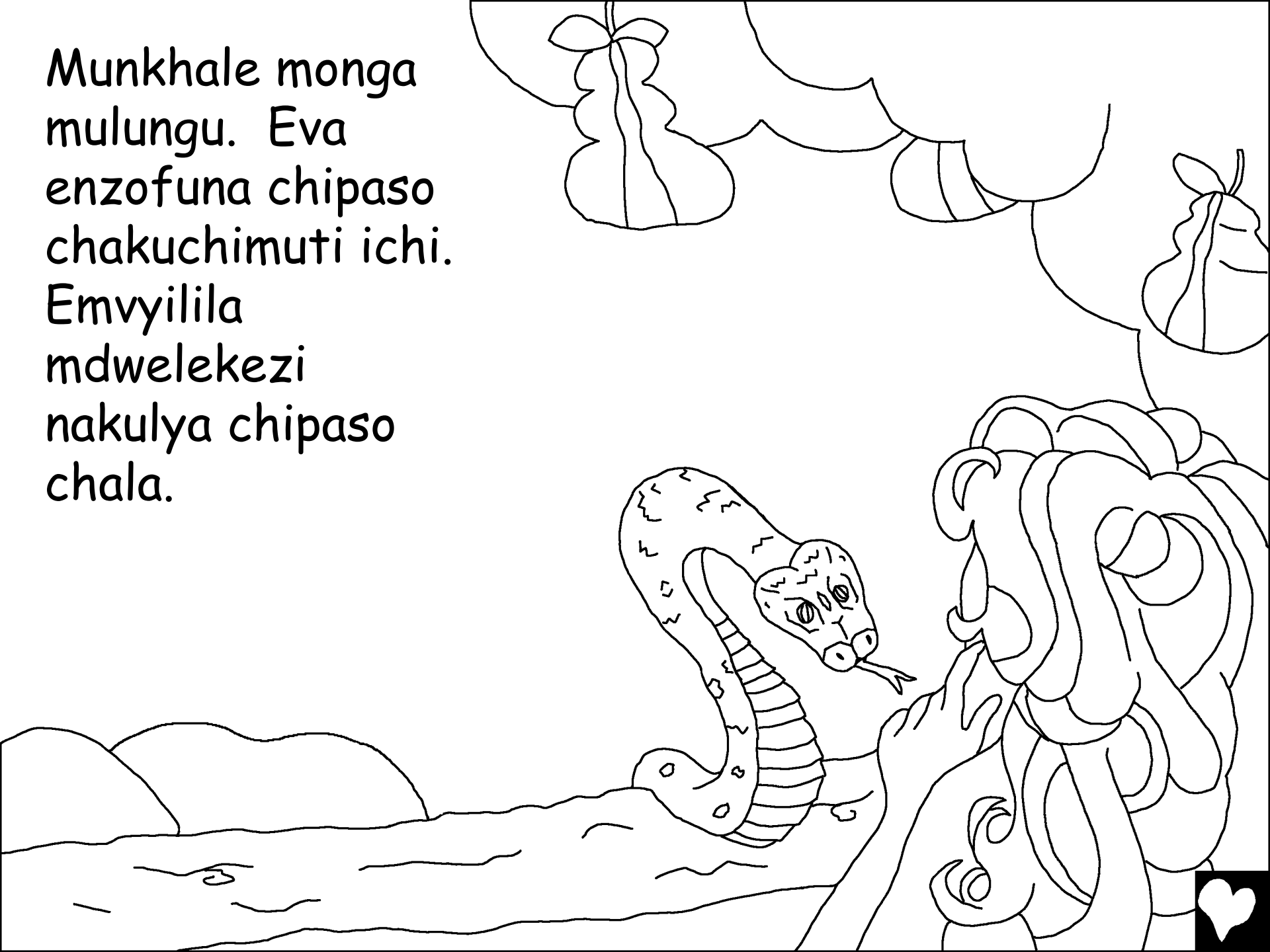


Mulungu
elikuuzyeni kuti
musalye kuli
chimutichilichonse?

Mdwelekezi ekonsha Eva. "Tingalye
chilichonse koma kuchosako chimozi"
anayankha. "Ngati talya olo kukata
chisepo ichi tizafa"
"muzafa" mdwelekezi
akonsha.



Munkhale monga
mulungu. Eva
enzofuna chipaso
chakuchimuti ichi.
Emvyilila
mdwelekezi
nakulya chipaso
chala.



Pamene Eva sanamvelele
mulungu anapangisa Adam kuti
alye chisepo. Sembe Adam
anakana, "yai! Sinazanyoza mau
a mulungu".

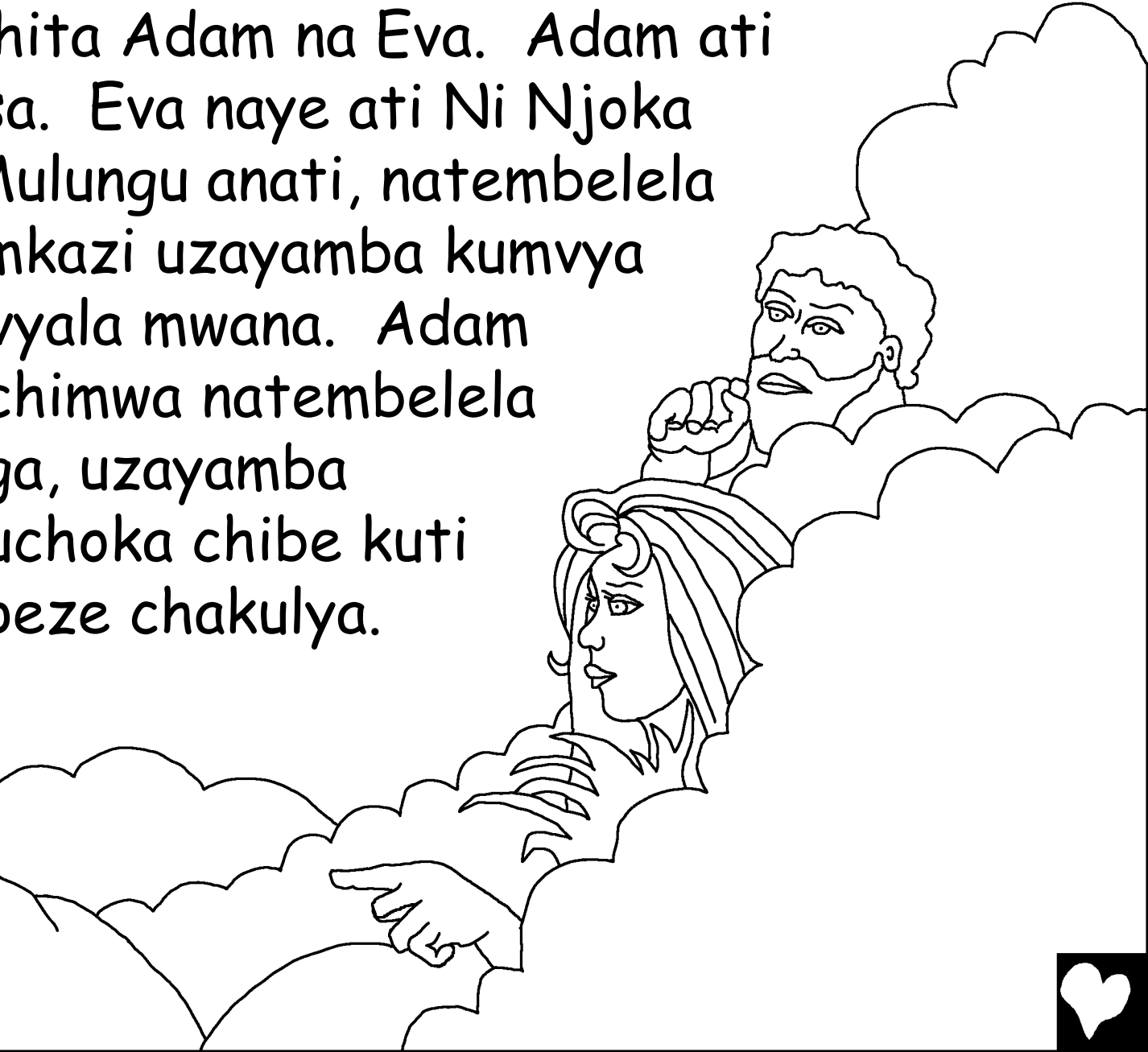
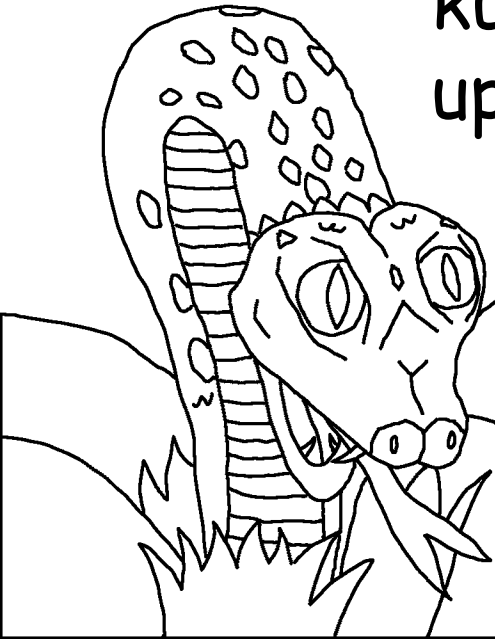




Pamene Adam na Eva anachimwa eziba
kuti alichinthanu, eyamba kutunga matepo
nakuzibisa ndipo ebisama munsanga.



Kunchingulo mulungu ewela ku munda wa Edeni,
Eziba vechichita Adam na Eva. Adam ati
Eva walengesa. Eva naye ati Ni Njoka
yalengesa. Mulungu anati, natembelela
njoka ndipo mkazi uzayamba kumvya
kubaba pakuvyala mwana. Adam
chifukwa wachimwa natembelela
chalo na minga, uzayamba
kuchoka chibe kuti
upeze chakulya.

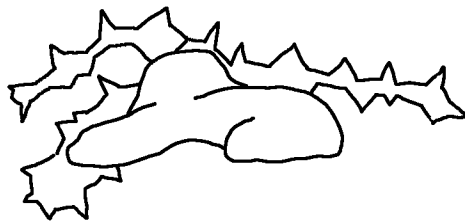


Mulungu anachosa Adam na
Evam'munda wa Edenichifukwa
banachimwa, banachoka ku
umoyo anabapasa mulungu!



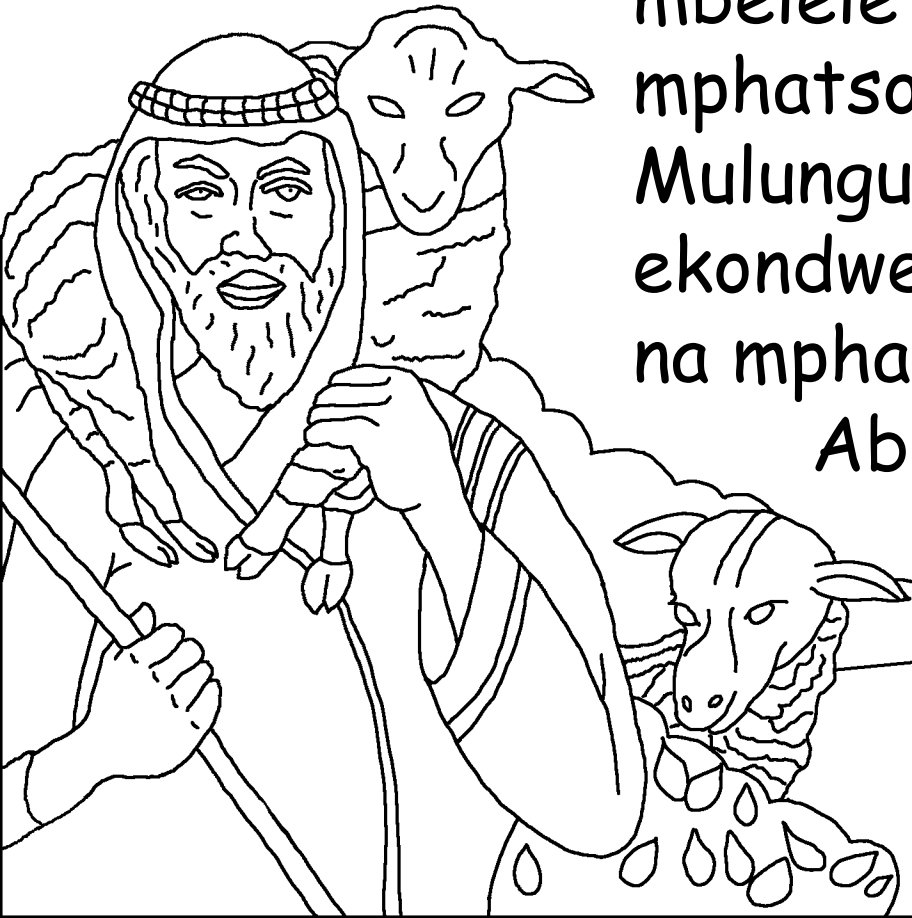


Mulungu anapanga lupanga
yakuthwa kuti abachose
m'munda, anabapangila Malaya
akhungu. Mulungu anachosa
kuti Malaya
akhungu?

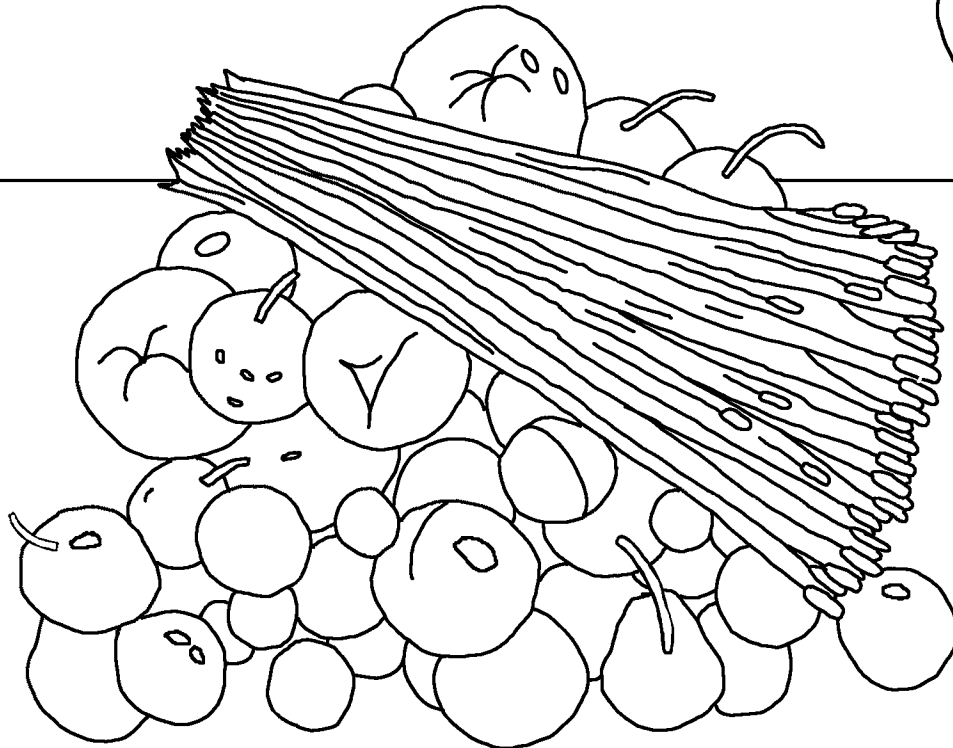


Posapita nthawi banja linabadwa kuli Adam na Eva.
Mwana oyamba enze ni Kaeni amene anali kulima
ndipo wachibili anali Abele anali chibeta. Siku lina
Kaeni analeta zamudimba kuli mulungu
monga mphatso ndipo Abele analeta

mbelele monga
mphatso yake.
Mulungu
ekondwela
na mphatso ya
Abele.



Mulungu aliyokondwele na
mphatso ya Kaeni. Kaeni enkhala
okalipa. Koma mulungu anati,
"ngati wachita voyenela, ngati
sanakuvomelele?"



M'kwiyo wa Kaeni siunachoke.
Patapita ka nthawi epaya
m'bale wake Abele.



Mulungu ekonsha Kaeni. M'bale wako alikuni Abele?" Siniziba eyankha Kaeni monama. Kodi ndine mlonda wake? Mulungu ekalipa etola vonse na nzelu zolima kuli Kaeni nomupanga munthu woenda enda.



Kaeni efuna pa menso ya ambuye. Ekwalitya mwana wa Adam na Eva ndipo epanga banja. Posapita nthawi azukulu na mazukulu tuvi bezula m'zinda wonse.



Pamenepo, banja ya Adam na Eva
yikula m'nsanga, mumasiku aja
banthu benzonkhala ngako kuchila
masiku ano.



Pamene seti mwana wa Eva anabadwa anati,
mulungu anipasa mwana uyu kuti abwele pa
malo wa Abele. Seti enze munthu wa
tumilungundipo anankhala zaka 912
ndiponso enze na bana bambili.



Pamene mibado inayamba kupaka Muchalo
banthu anayamba kunkhala oipa
nakuipisisa ndipo mulungu anaganiza
zoononga mtundu wa anthu ndipo
zilombo nan yoni zones. Mulungu
sanakondwele ndi
munthu koma



anakondwela
na munthu
umozi ...



Munthuyu enze Nowa. Mbado wa seti, Nowa enze munthu woyela ndipo aliye chifukwa. Enzoenda na mulungu. Ephunzisa bana wake atatu kulemekeza mulungu.

Mulungu eganiza kusebenzesa Nowa munjila

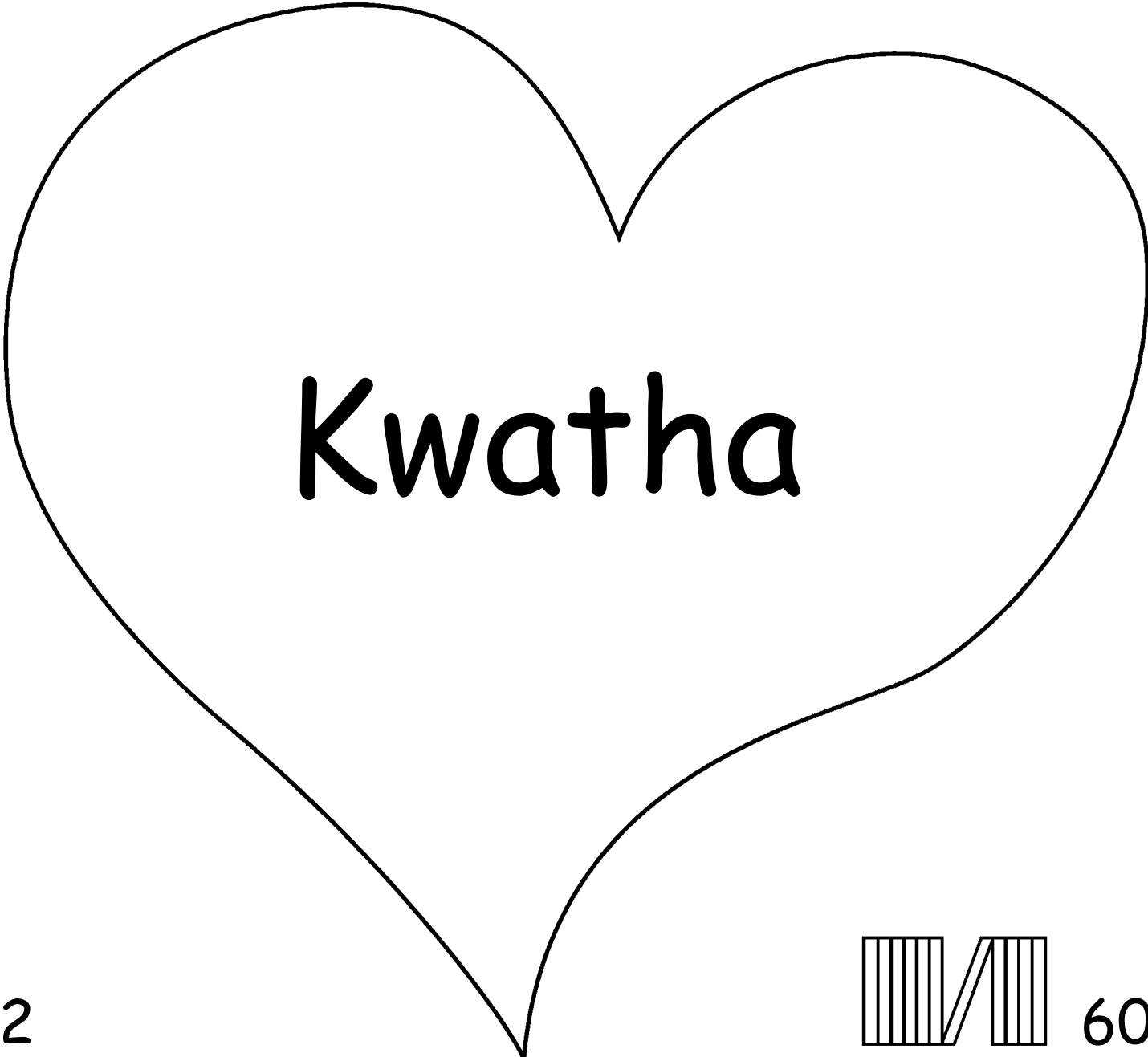
iyakine yapadela.



Kuyamba kwa chisoni cha munthu
Nkhani yofunila ku mau a mulungu, baibo
yupyezeka mu
Genesis 3-6

"Kulowa kwa mau anu ni nyali."
masalimo 119:130

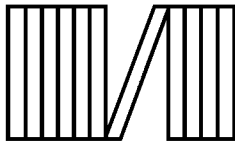




Kwatha



2



60



Nkhani zamu baibo zutiuzya zabwino
pali mulungu anatipanga na zimene afuna.

Mulungu aziba tachita zoipa zambili, yamene amaita machismo.
Mphoto ya chimo ni ifya, koma mulungu atikonda kwambili kuti
etuma mwana wake okondeka yesu, kuti azatifela pa mtanda
nakunzuznzika pamachimo anu. Yesu anabwelela ku umoyo
ndipo naenda kumwamba. Ngati mukhulupilila mwa yesu
nakumupempha kukukhululukila mchimo. Azachita. Azabwela
kunkhala mwa iwe ndipo uzankhala muyayaya.

Ngati ukhulupilila mu zooni, Kamba izi kwa mulungu: yesu,
nikhulupilila kuti ndiwe mulungu ndipo ndiwe muthu ananifela
pamachimo anga. Bwela muumoyo wanga nakukhuluka machismo
anga kuti nikhale na umoyo wasopano ndipo siku lina nikakhle
naiwe pamozi muyayaya. Nithandizeni kukulemekezani
nachnkhala mwana wako. Amen.

Welengani baibo nakukamba na mulungu
nsiku zonse yohane 3:16

