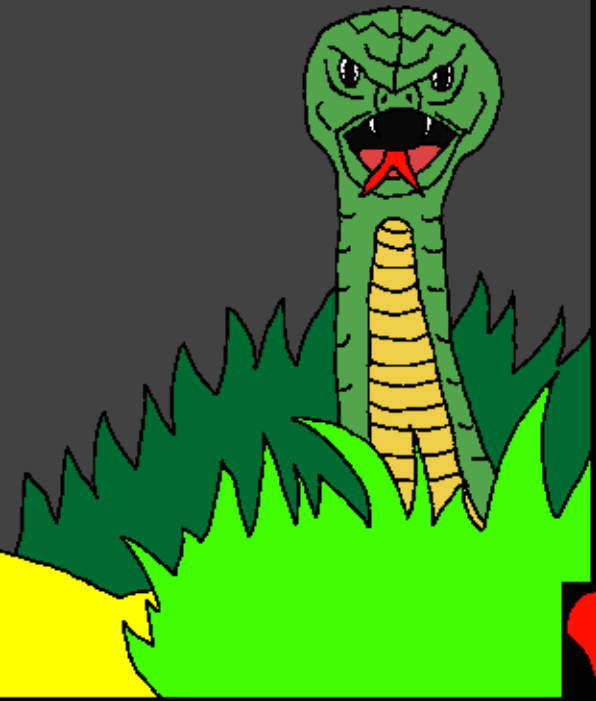


Baibulo ya bana
Yakubweleselani

Kuyamba kwa
chisoni cha
munthu



Yolembewa na: Edward Hughes

Yofotokozewa na: Byron Unger; Lazarus;
Alastair Paterson

Yosinthiwa na: M. Maillot; Tammy S.

Yantanthauliziwa na:
www.christian-translation.com

Yochosedwa na: Bible for Children
www.M1914.org

©2022 Bible for Children, Inc.

Chitupa: Muli na danga yojambula nakutulusa koma osagulisa.



Mulungu anapanga, pamene
mulungu anapanga adam,
anankhala m'munda wa eden
na mkazi wake eva. Benze

okondwela na kulemekeza
mulungu mpaka
nsiku imozi ...



Mulungu
elikuuzyeni kuti
musalye kuli
chimutichilichonse?
Mdwelekezi ekonsha
Eva. "Tingalye
chilichonse
koma kuchosako
chimozi" anayankha.



"Ngati talya olo
kukata chisepo
ichi tizafa"

"muzafa" mdwelekezi akonsha.
Munkhale monga mulungu. Eva
enzofuna chipaso chakuchimuti
ichi. Emvyilila
mdwelekezi nakulya
chipaso chala.



Pamene Eva sanamvelele
mulungu anapangisa Adam
kuti alye chisepo. Sembe
Adam anakana,
"yai!
Sinazanyoza
mau a
mulungu".





Pamene

Adam na Eva anachimwa
eziba kuti alichinthanu,
eyamba kutunga matepo
nakuzibisa ndipo ebisama munsanga.

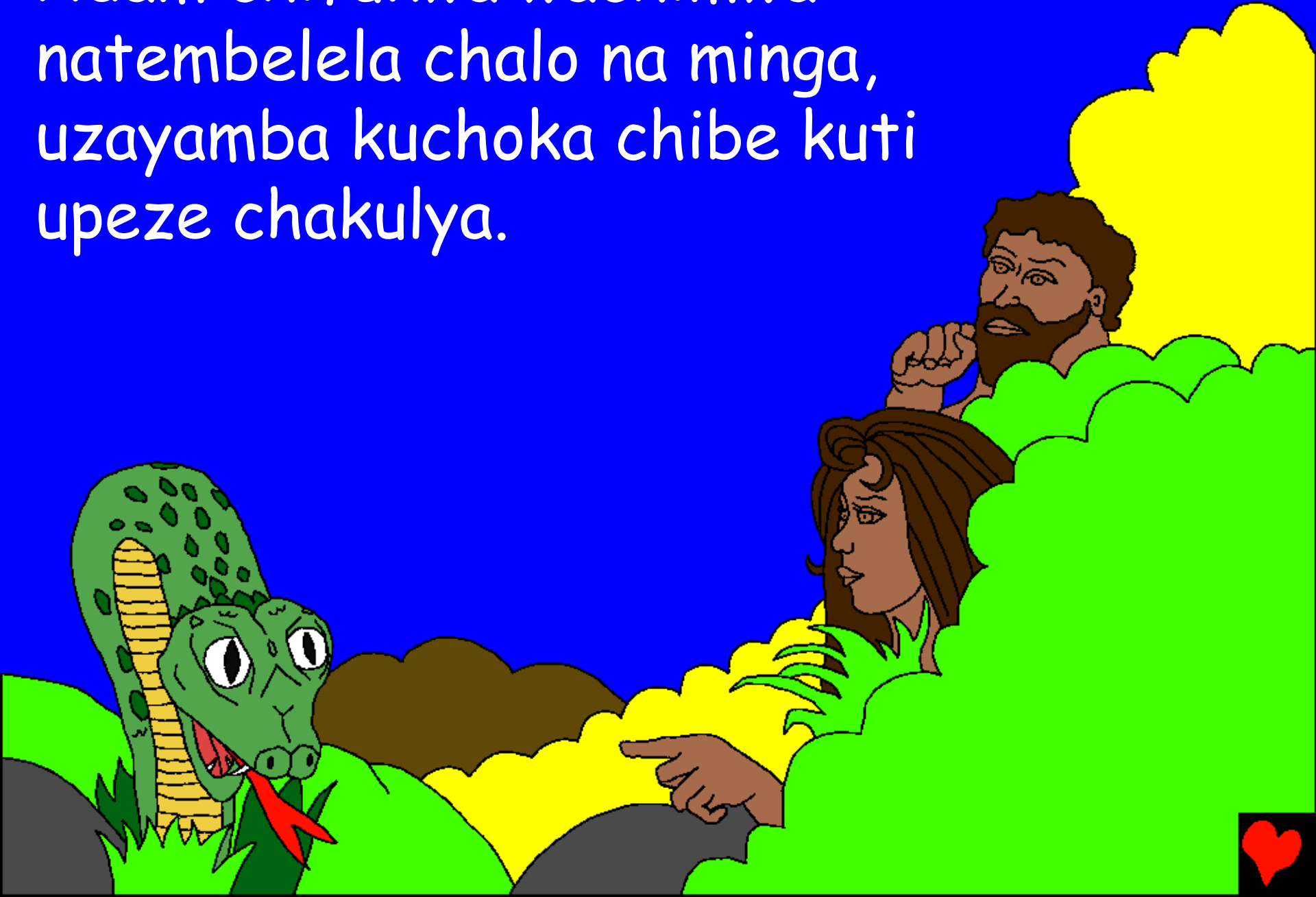


Kunchingulo mulungu ewela ku munda
wa Edeni, Eziba vechichita Adam na
Eva. Adam ati Eva walengesa.
Eva naye ati Ni Njoka
yalengesa. Mulungu anati,
natembelela njoka ndipo
mkazi uzayamba

kumvya
kubaba
pakuvyala
mwana.



Adam chifukwa wachimwa
natembelela chalo na minga,
uzayamba kuchoka chibe kuti
upeze chakulya.



Mulungu anachosa Adam
na Evam'munda wa
Edenichifukwa
banachimwa, banachoka
ku umoyo
anabapasa
mulungu!





Mulungu
anapanga lupanga yakuthwa
kuti abachose m'munda,
anabapangila Malaya
akhungu. Mulungu
anachosa kuti
Malaya akhungu?



Posapita nthawi banja linabadwa kuli Adam na Eva. Mwana oyamba enze ni Kaeni amene anali kulima ndipo wachibili anali Abele anali chibeta.

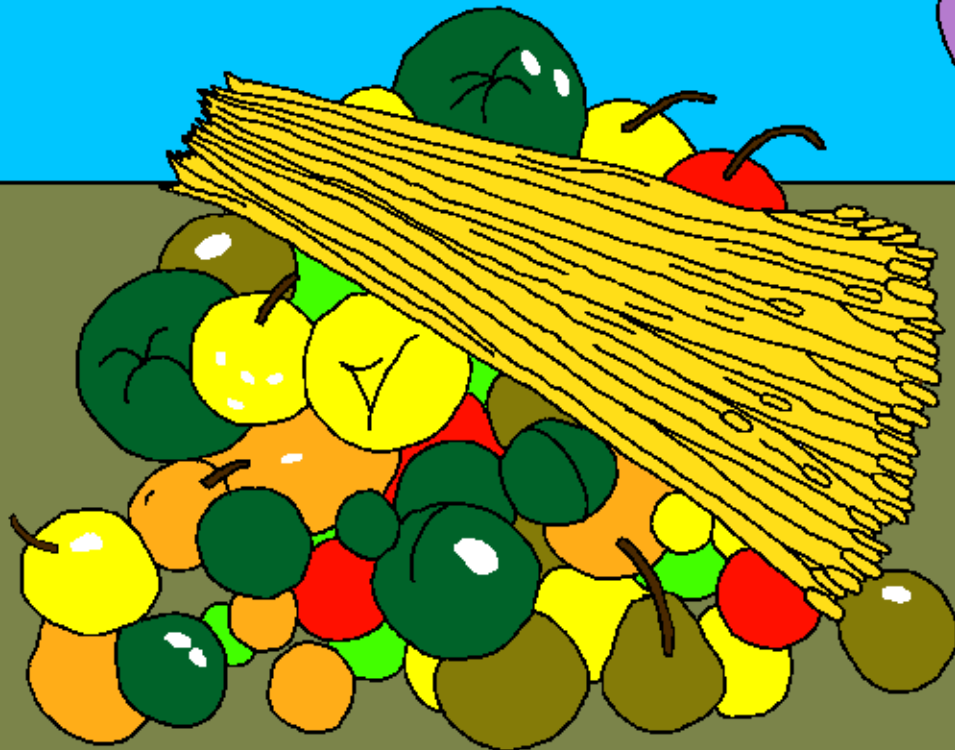


Siku lina Kaeni analeta zamudimba kuli mulungu monga mphatso ndipo Abele analeta mbelele monga mphatso yake. Mulungu ekondwela na

mphatso ya Abele.



Mulungu aliyokondwele na mphatso ya Kaeni. Kaeni enkhala okalipa. Koma mulungu anati, "ngati wachita voyenela, ngati sanakuvomelele?"



M'kwiyo wa Kaeni siunachoke.
Patapita ka nthawi epaya
m'bale wake Abele.

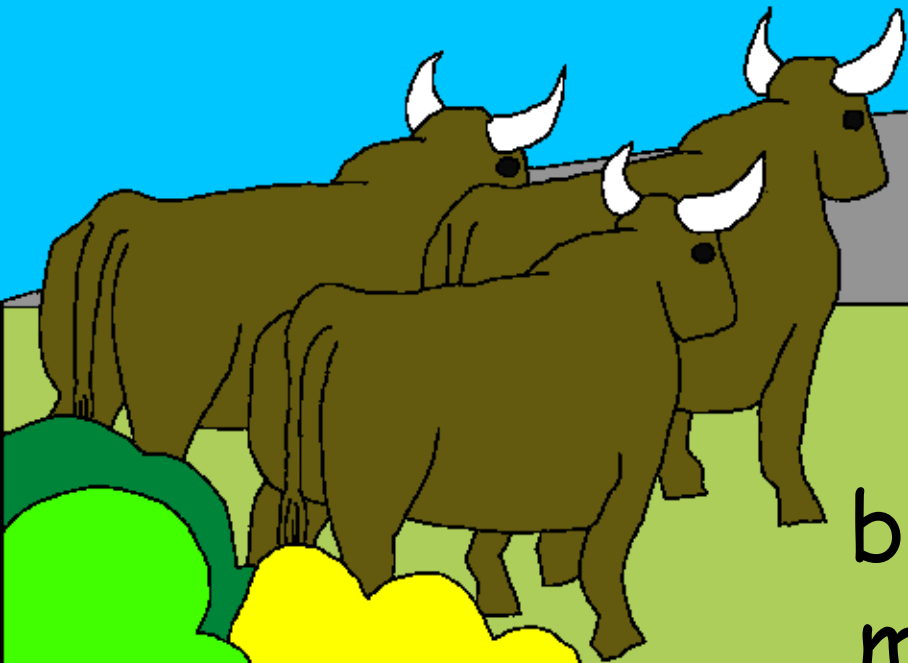


Mulungu ekonsha Kaeni. M'bale wako alikuni Abele?" Siniziba eyankha Kaeni monama. Kodi ndine mlonda wake? Mulungu ekalipa etola vonse na nzelu zolima kuli Kaeni nomupanga munthu

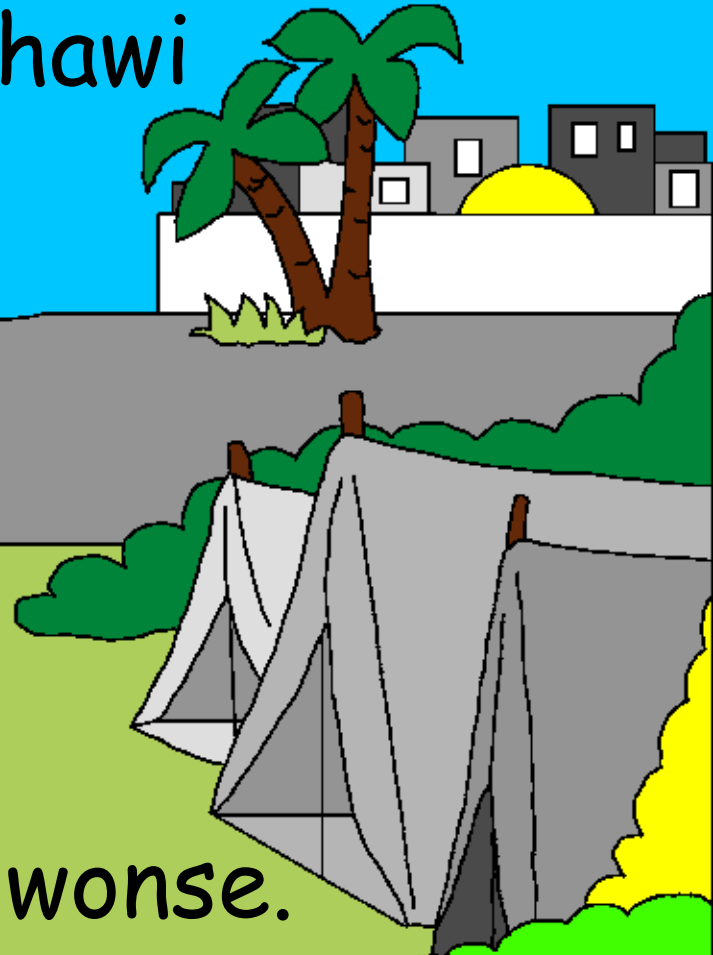
woenda
enda.



Kaeni efuna pa menso ya ambuye.
Ekwalita mwana wa Adam na Eva ndipo
epanga banja. Posapita nthawi
azukulu na mazukulu tuvi



bezula
m'zinda wonse.



Pamenepo, banja ya Adam na Eva
yikula m'nsanga, mumasiku aja
banthu benzonkhala ngako
kuchila masiku ano.



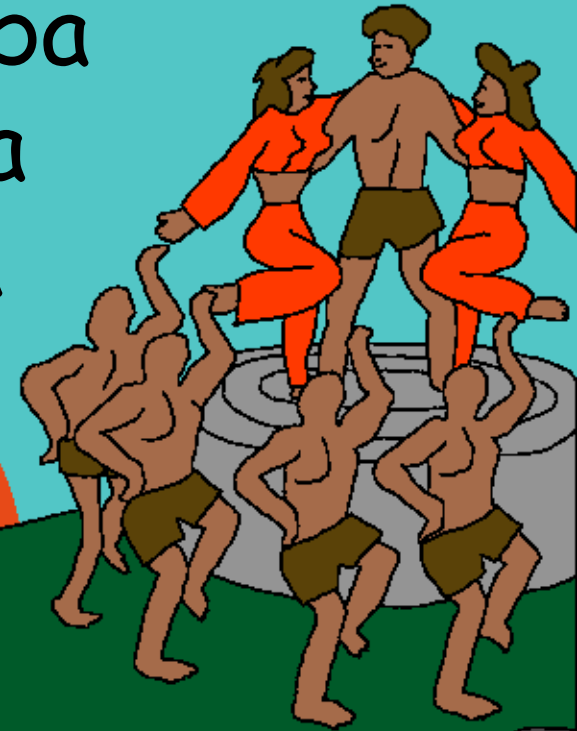
Pamene seti mwana wa Eva anabadwa anati, mulungu anipasa mwana uyu kuti abwele pa malo wa Abele.



Seti enze munthu wa tumilungundipo
anankhala zaka 912 ndiponso enze
na bana bambili.



Pamene mibado inayamba kupaka
Muchalo banthu anayamba
kunkhala oipa nakuipisisa
ndipo mulungu anaganiza
zoononga



mtundu wa
anthu ndipo
zilombo nan yoni
zones.

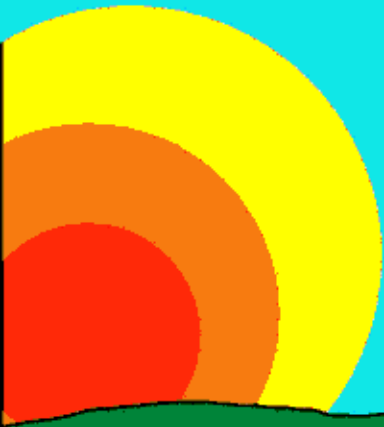


Mulungu sanakondwele ndi
munthu koma anakondwela
na munthu umozi ...



Munthuyu enze Nowa. Mbado wa
seti, Nowa enze munthu woyela
ndipo aliye chifukwa.

Enzoenda na
mulungu.



Ephunzisa bana wake atatu
kulemekeza mulungu. Mulungu
eganiza kusebenzesa Nowa
munjila iyakine
yapadela.



Kuyamba kwa chisoni cha munthu

Nkhani yofunila ku mau a mulungu,
baibo

yupezeka mu

Genesis 3-6

"Kulowa kwa mau anu ni nyali."
masalimo 119:130



Kwatha



Nkhani zamu baibo zutiuzya zabwino pali mulungu anatipanga na zimene afuna.

Mulungu aziba tachita zoipa zambili, yamene amaita machismo. Mphoto ya chimo ni ifya, koma mulungu atikonda kwambili kuti etuma mwana wake okondeka yesu, kuti azatifela pa mtanda nakunzuznzika pamachimo anu. Yesu anabwelela ku umoyo ndipo naenda kumwamba. Ngati mukhulupilila mwa yesu nakumupempha kukukhululukila mchimo. Azachita. Azabwela kunkhala mwa iwe ndipo uzankhala muyayaya.



Ngati ukhulupilila mu zoonu, Kamba izi kwa
mulungu: yesu, nikhulupilila kuti ndiwe
mulungu ndipo ndiwe muthu ananifela
pamachimo anga. Bwela muumoyo wanga
nakukhuluka machismo anga kuti nikhale
na umoyo wasopano ndipo siku lina
nikakhle naiwe pamozi muyayaya.
Nithandizeni kukulemekezani nachnkhala
mwana wako. Amen.

Welengani baibo nakukamba na mulungu
nsiku zones. Yohane 3:16

