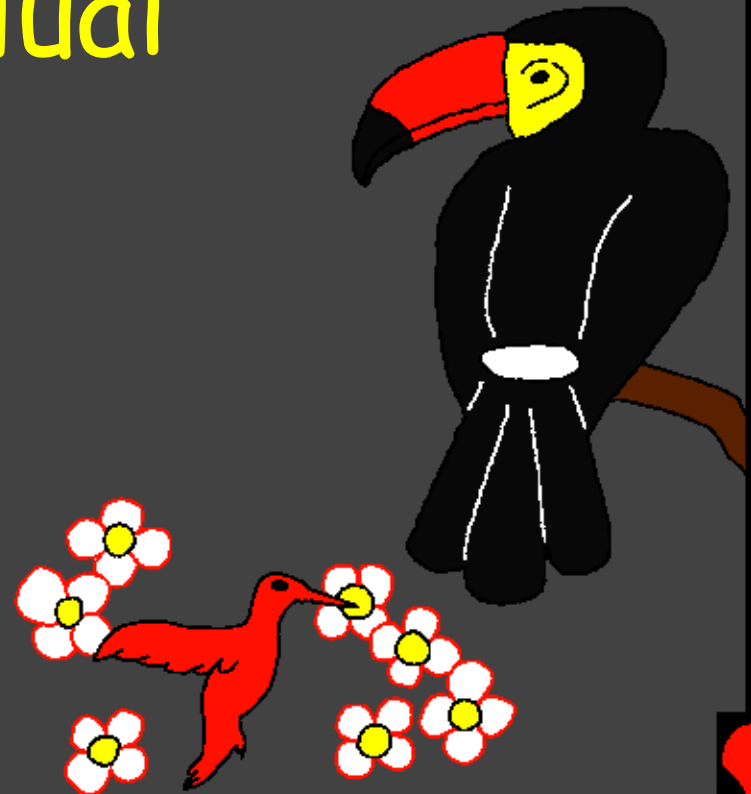
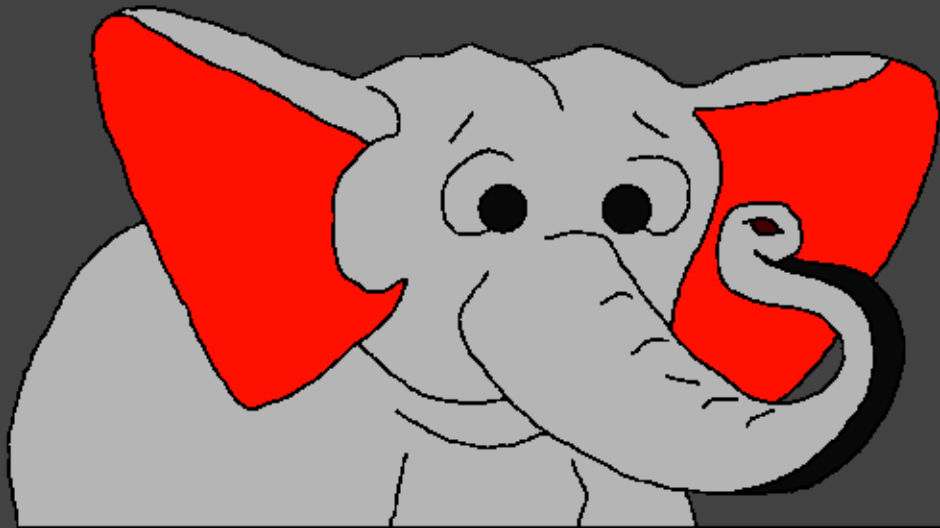


Alao guai khang Baibal
Kaipat ti Louc Mei

Raguang rui ram
kapum na dam luai
pu khou



Himei: Edward Hughes

Kaba Dinv Louc Mei: Byron Unger; Lazarus
Alastair Paterson

Kaluan Kasiamv Louc Mei: Bob Davies; Tammy S.

Hanc Pat Louc Mei: Katasin Kamei

Liangpatc Louc Mei: Bible for Children
www.M1914.org

©2020 Bible for Children, Inc.

Nu Lou Mei: Nang rui juanv khang ham mak ge thei
nam pat dat lana sin su nu e.



Thou rui aniu ta dam lou tu cho? Raguang lat
Baibal/Bible rui mansei hei akum na lung thao kan
tu cho tu mei pary luanry din lou e. Thaurei khou,
Raguang rui mansei dam lou rei liang khuan mei
kajan Adam kao e.



Raguang rui Adam ta kandi taniang khou rui kasiam
khuane. Raguang rui Adam khou ring mei thiu bun
lou pu khou kamei ring the. Kumna hou gai mei Eden
Pikuan kao mei khou kara nac ta ti bam lou
khuam the.

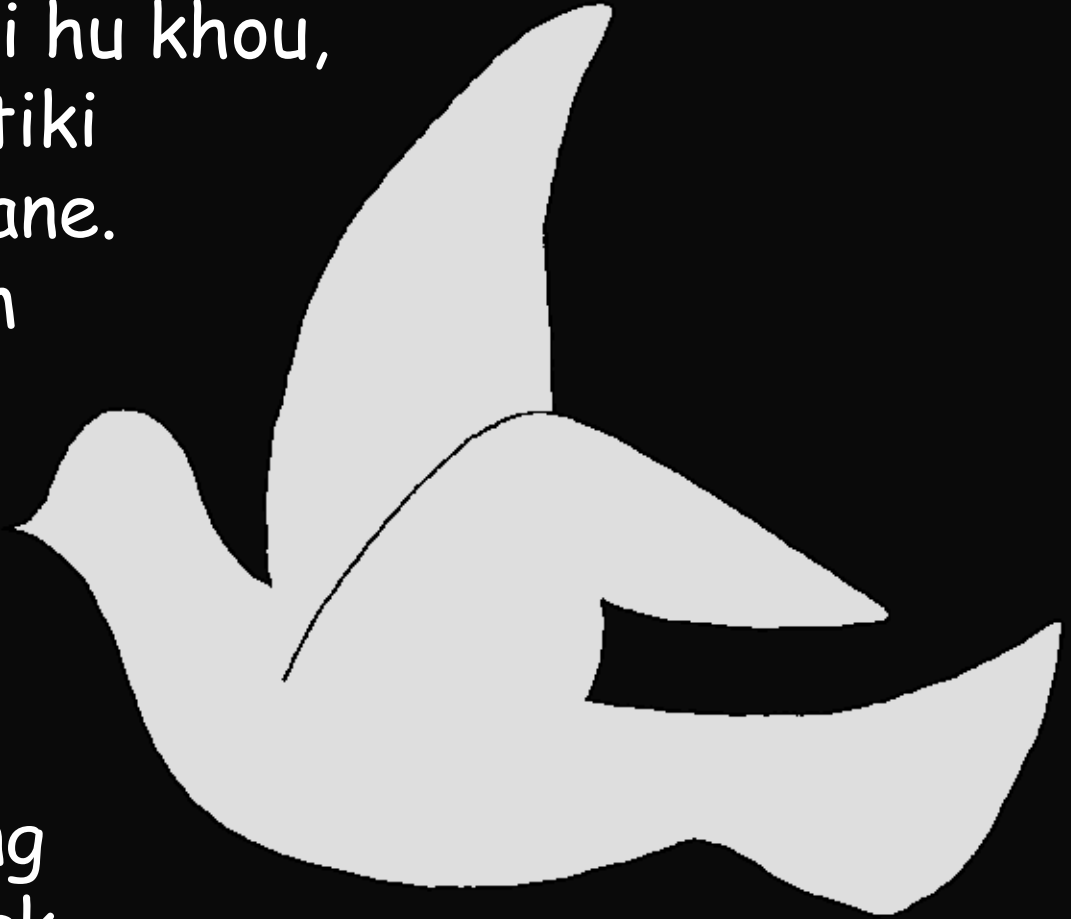


Raguang rui Adam ta damv mak mei hu khou, Kamei
rui charin mei puat guay hou gai mei rui padik na mi
kandi ta dam lou the. Khat khat su na ching,
jangbaek, tingpuk, namvgai mei mun, thing nui-pannu,
thing bang, nruai-thaoruai, khouring-khouna kandi
khou nai mei kapum nac dam lou the.

Kaling sing na mi kapum na
hei Raguang rui
dam lou tuange.



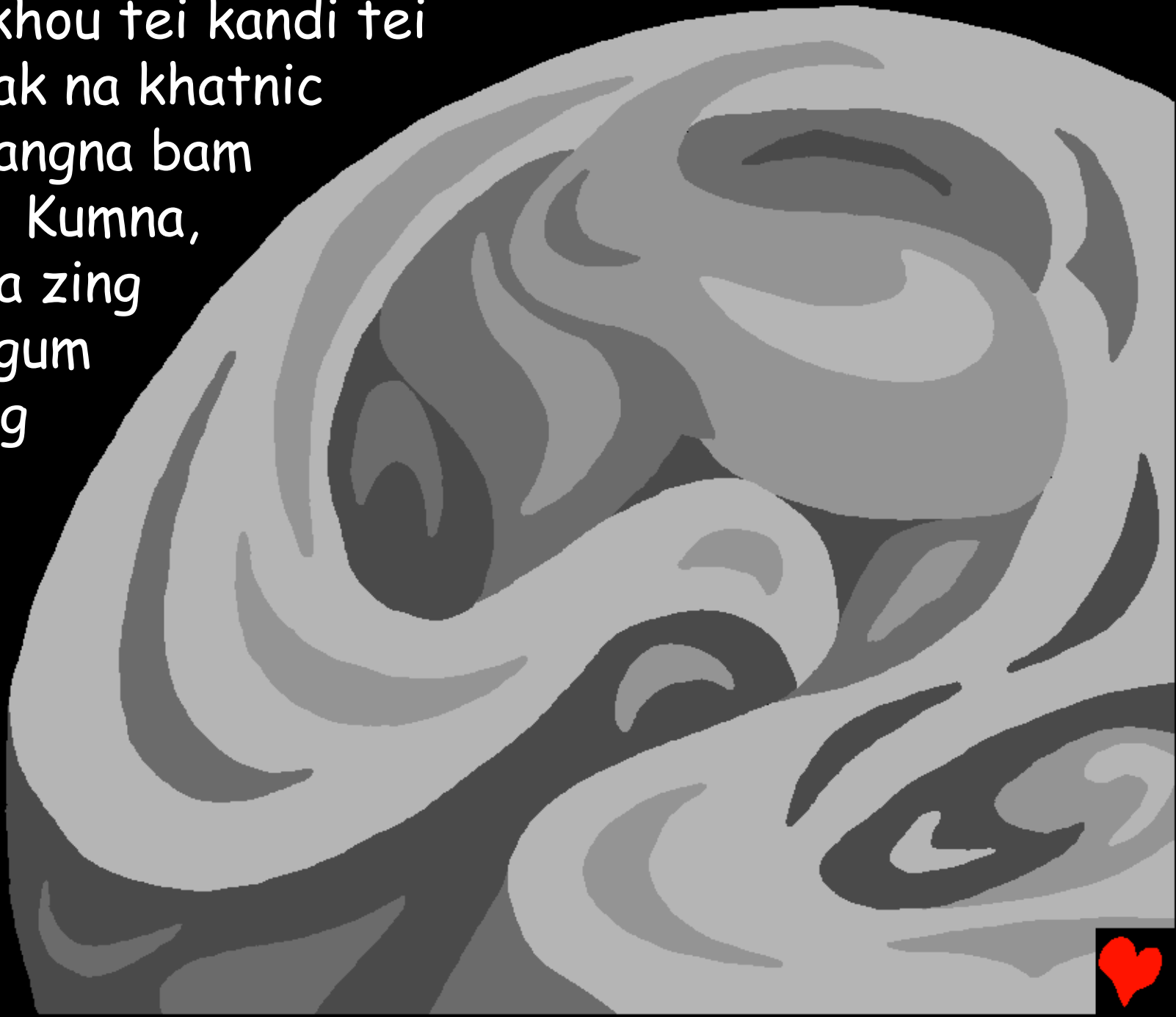
Thao rei khou, Raguang rui ram
kapum na dam mak mei hu khou,
ram mak bam khuane tiki
Raguang kara nac khuane.
Mansei nic, ram kapum
khat sini nai mak
khuane. Zing mei,
gaan mei ni mak
khuane. Kei mei, ku
mei, doulanei, nthuan
nic mak ge tiki Raguang
kara nac kahou mei mak
mei pu su na nai bam
khuane. Kapan rui ram
guay na taan khuane.



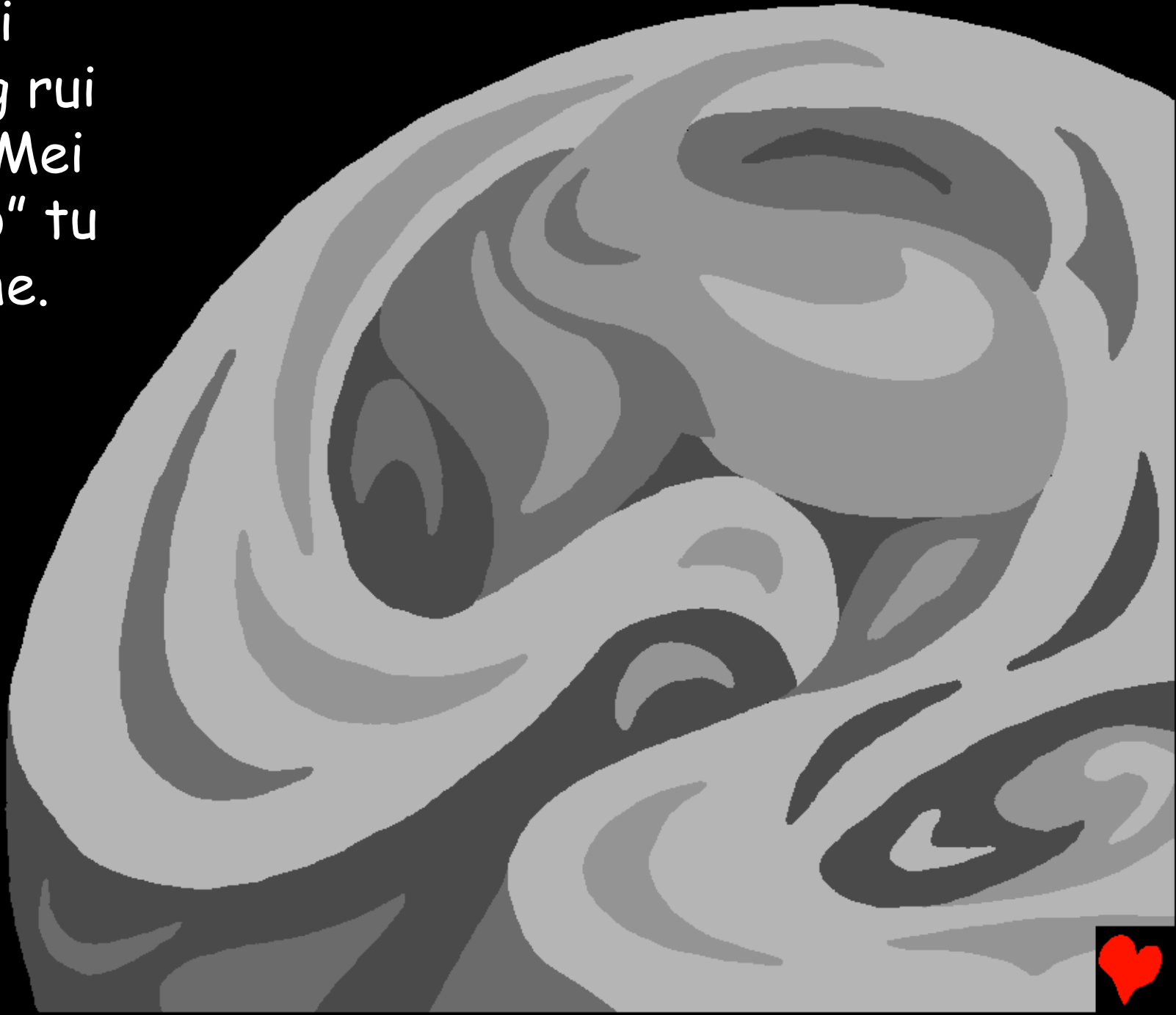
Thao rei khou
Raguang rui
Tingpuk khatnic
Kandi ta dam
khuane.



Mi gan khou tei kandi tei
kalun mak na khatnic
nsa-karangna bam
khuane. Kumna,
duidai ta zing
mei rui gum
zing-zing
bam
khuane.



Khou tei
Raguang rui
"Gaanv Mei
Nai Tho" tu
na sa the.



Kou tei gaanv mei pat the. Kumna Raguang rui gaanv
mei ta TINGMIK, zingv mei ta ZINGBANG tuna kao
the. Zing bangc tat kan the, lauthuan guang dat
the. Mi tei rei mei tingmik the.



Kanei mei tingmik nung, duipui dui ta Raguang rui ti
pat the. Duipui, duibuk guay ta tingpuk bang khou
kaluan lou chui na lou the. Kathum mei tingmik nung
Raguang rui ramkaeng di nai kan di tho tuna sa the.
Khou tei ramkaeng di nai pat the.



Raguang rui phuai, munpuang, thingnui-paannu
khatnic thingbang guay nic nai kan di tho
tuna lat dan ti the. Khou
tei nai pat the.



Kumna Raguang rui Nei, Bu khatnic
Ganchuang na mansei rui kasing chak
dat ngam mak mei aju dam lou
the. Zingbang khat tat kan the,
lauthuan guang dat the. Mi
hei padei mei tingmik the.



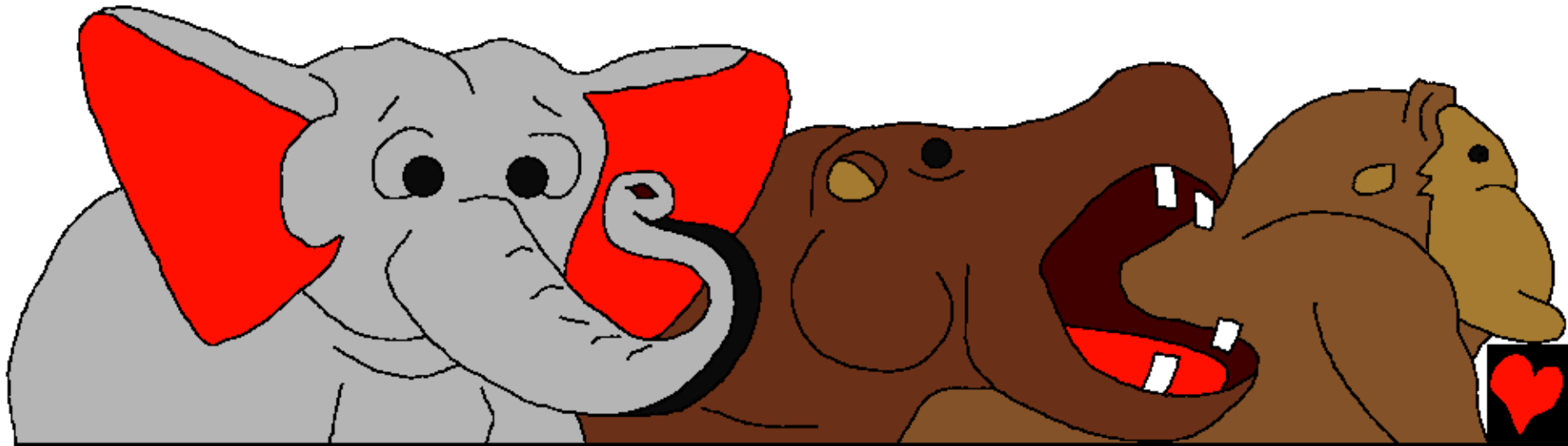
Duipui khouring
guay, kha-ga khatnic
nruai-thaoruai hei
Raguang tuang katuang
chak khou lou khuane.
Kumna tingmik pangu
pui nei Raguang rui
duipui kha daimei,
nthiamv mei, katan
sangmei duimei
khouring guay
dam lou the.



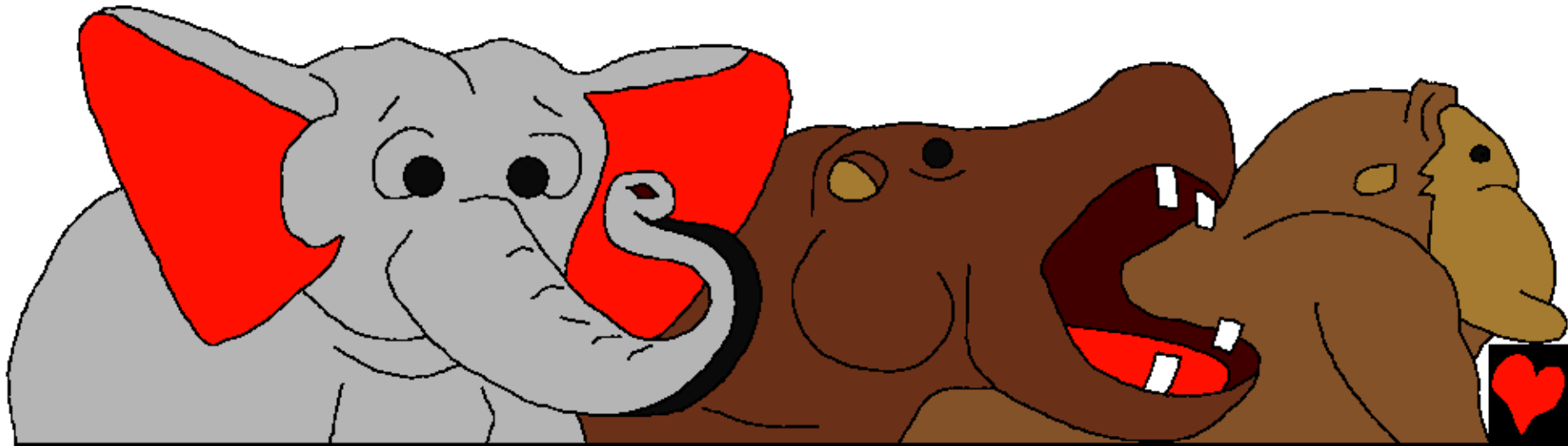
Kumna Raguang rui
kandi namruc, duipui
khatnic tingpuk khou
nei la na lung bam
khang lungking-lungkiu
pat tho tuna suaihiam
lou the. Zingbang tat
kan the, lauthuan
guang dat the. Mi hei
pangu mei tingmik ge.



Mi tang tei Raguang rui sa dat the. Kamei rui sa the, kandi rui khouring jat guai na ti pat kan di tho ... kai khouring, numbang khouring, khouring daimei nic, nthiammei nic tuna sa the. Khou tei khouring kajat guay na: tiang-khuai, kabung rui guangv mei khouring, dai mei guipuang, jouc, duichaki, chupaliang kajao na mi nung tei Raguang rui dam lou the.

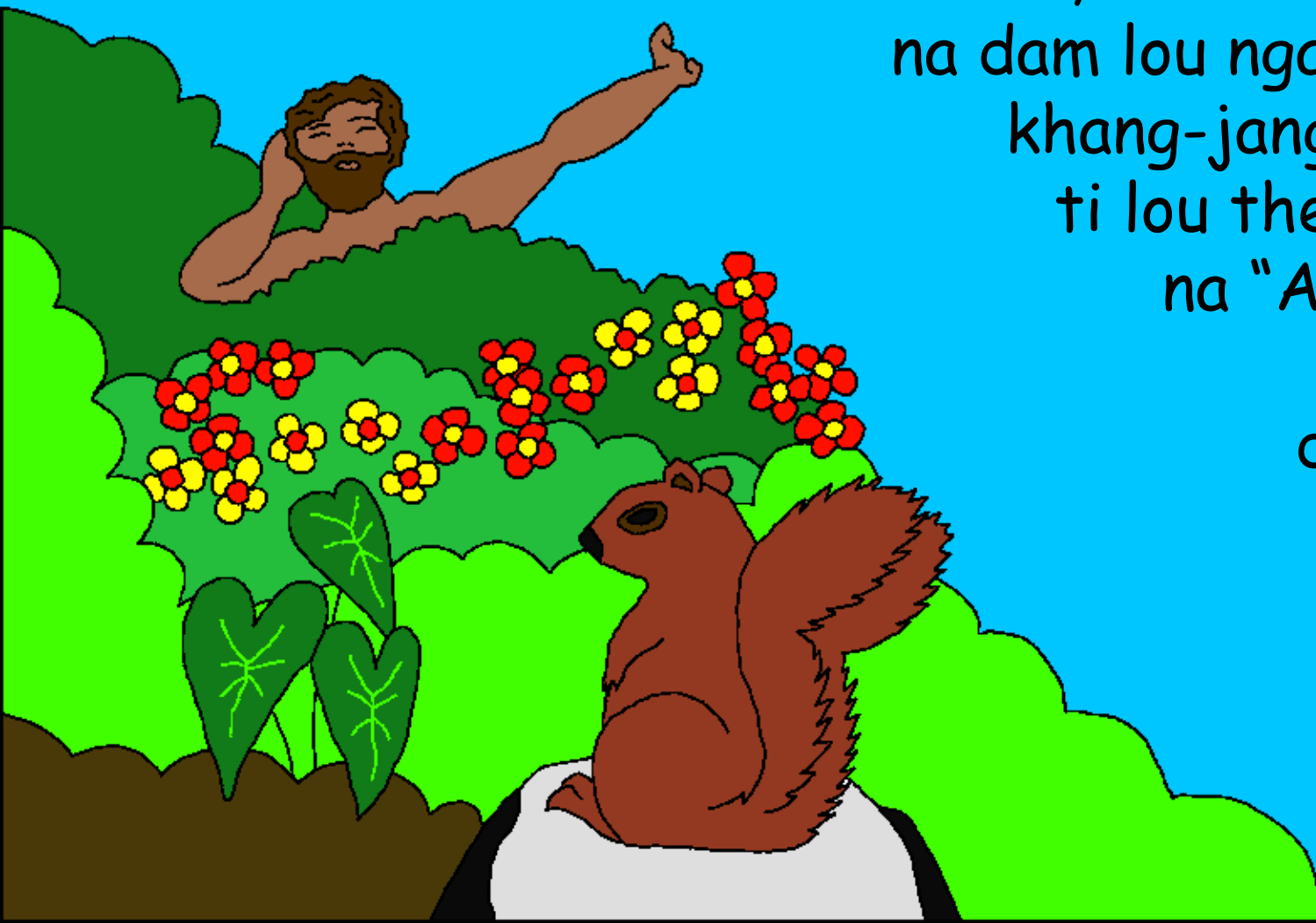


Kumna zingbang tat kan the, lauthuan guang dat
the. Mi hei charuk mei tingmik the.

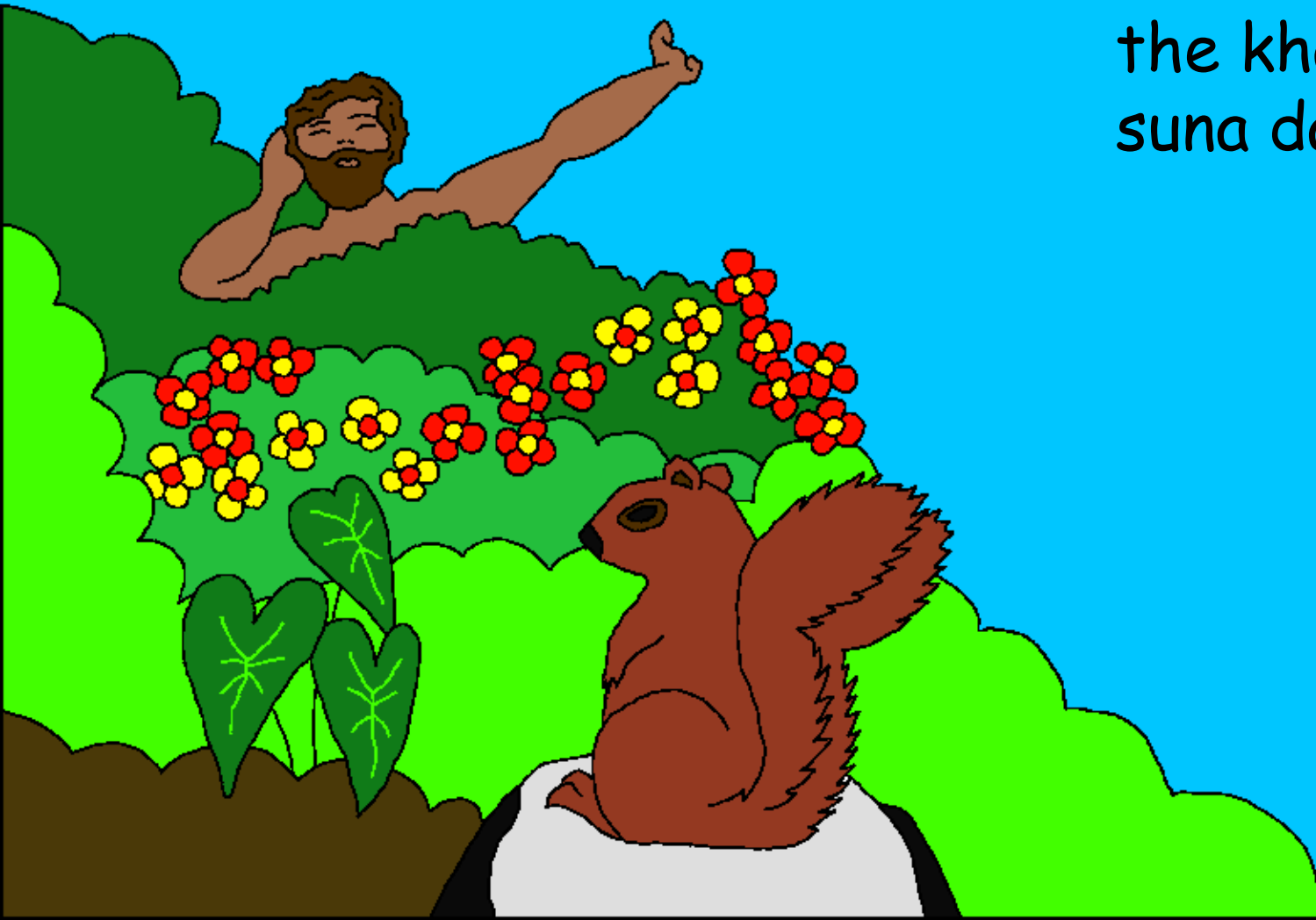


Jang charuk puinung Raguang rui ram kapum na dam
luai mei tang kungliang-gailiang mei taan khat kamei
rui taan khuane. Mi kiu tho mansei ta e. Raguang
rui sa the, ntao tho ram guai

na dam lou ngam the. Tu
khang-jang khang nic
ti lou the. Kum the
na "Aniu lun luic
na" mansei
dam di kho.



Kamei rui kandi namru khou nai mei khouring-khouna
khatnic puat guai nac ta sin na kaipou su kan di tho
tuna Raguang rui sa the. Kumna Raguang rui kalun
lui na mansei ta dam lou
the khatnic kalun
suna dam lou the.



Raguang rui Adam khou
sa the. Nang rui tu
nii nic mei thing
thai mi pikuan khou
mei tu nu the tiki
sic mei-gai mei thay
mei thing thai bang
khou mei kathai tho
tu nu mak ge. Nang
rui mi khou mei thai
tei tu ethei, tu pui
nung rui Nang suai
mak na thei puni.



Mansei nac hei kara na bam
mei gai mak khe. Kum the na
kaziab khang Ai rui dam lou ni
the tuna Raguang rui sa the.
Raguang rui nruai-thaorui,
khouring-khouna guai Adam
khou laguang the.



Kumna Adam rui kajan
phuak lou the. Kamei hei,
hei hak na taan la pui jat de
tiki mi guai tei rui Adam
khang cha mei mak khe
khatnic ti nei la lou ngam
mak khe.



Kum tikhou, Raguang rui Adam ta ti zib thei mang-mang lou na zib bam mei naek pai rou tei la pat the. Kumna Raguang rui Adam naek pai rou khou tei

rui n-tu mei ta dam the. Kajan ntumei-Eve tuna kao the.

Raguang rui dam lou mei n-tu mei tei ntao tho Adam kaduang kang cha rap-rap the.



Raguang rui ram kapum na tingmik charuk lung
khou dam tang na dam luai the. Kumna jang
chanei mei tingmik ta nthak nei khang
suaihiam lou the. Adam le Eve kanou kanei
tei nthui mei ram neila neila na Raguang
lat piu na Eden Pikuan khou bam kluan
the. Raguang ta ka Raguang su the,
ti lou mei pu su the khatnic
duangda su the.



Raguang rui ram kapum na dam luai pu khou

Raguang tuang lat khou rui Pary,

Baibal/Bible khou rui phange

Thaureimei 1-2

"Nang lat akhou gut lou khou rui gaan
mei ti lou e." Kalumlu 119:130



Luai Louc Mei



Mi Baibal pary rui charin mei Raguangc aniu ta dam lou mei pu lam din lou e khatnic kamei rui nang niu ta nic kalam ti thai ni na bam e.

Ruang thu aniu rui si mei taan taanc lou mei guai thai na bam e. Mi ta tei pap tuna kao e. Pap tuang taanphi thu thei mei di the tiki Ruang rui nbaan ta hei di kam njian lou na Kana Mpou khatna mei ta kros khou nang pap jang nang phaen thei lou khang ndiu kei lou the. Kamei thei lou na Ringthao dat na Tingkao tat kan the. Nang rui kakhou lum lou na nang pap guai kuak lou khang nei ethei, kamei rui guang lou na nang khou lung lou puni. Ntao tumei hei nang khang kagan di the Jisu ta la lou khang. Nang rui la lou na lum lou ethei, Kamei le Tingsaeng lung ncham puni the.

Nang rui la lou na lum lou ethei, Ruang khou huainei tho. Jianmei JISU, Nang hei Ringsuang mei Ruangc tumei Ai lum the. Nang rui apap jang khang kandi khou mansei lun lui na guang na kros khou thei lou the. Kumna thei mei ta ngam lou na Ringthao dat kan the. Apanti khou nic guang lung lou pu o khatnic apap guai kuak lou pu o, hei kum ethei Ai nic kathan mei panti khou lung ngam khang; Ai ni nang thei lai ni e khatnic tingsaeng ringsuang mei panti lani e. Nang lat piu khang nkha lou o khatnic nang nac su khang jian lou o. Jisu jan khou AMEN.

Jahon 3:16 tei tingmik pum pana huainei na Ruang ta kachu o.

