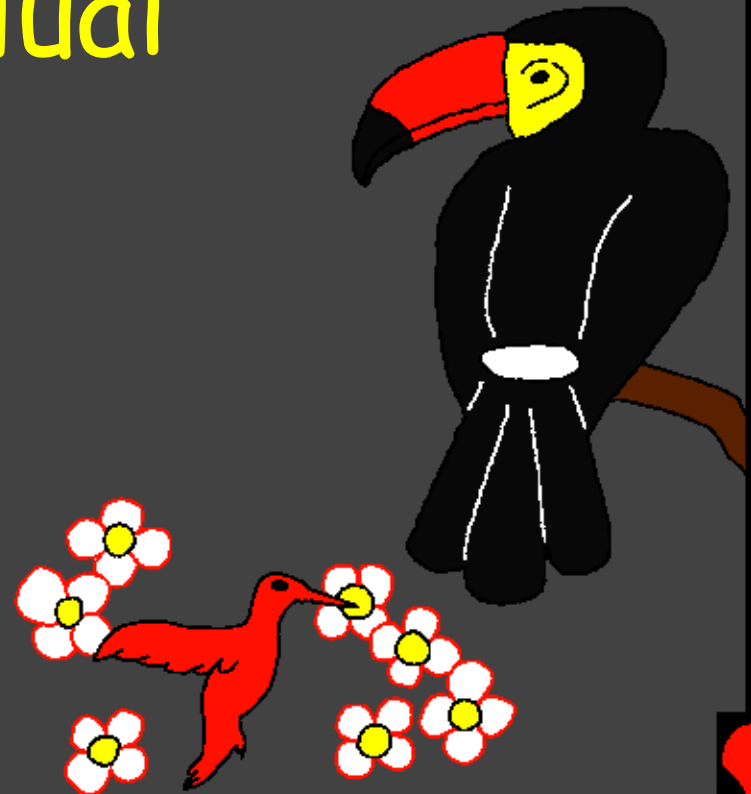


Alao guai khang Baibal  
Kaipat ti Louc Mei

Ranguang rui ram  
kapum na dam luai  
pu khou



Himei: Edward Hughes

Kaba Dinv Louc Mei: Byron Unger; Lazarus;  
Alastair Paterson

Kaluan Kasiamv Louc Mei: Bob Davies; Tammy S.

Hanc Pat Louc Mei: Katasin Kamei

Liangpatc Louc Mei: Bible for Children  
[www.M1914.org](http://www.M1914.org)

©2020 Bible for Children, Inc.

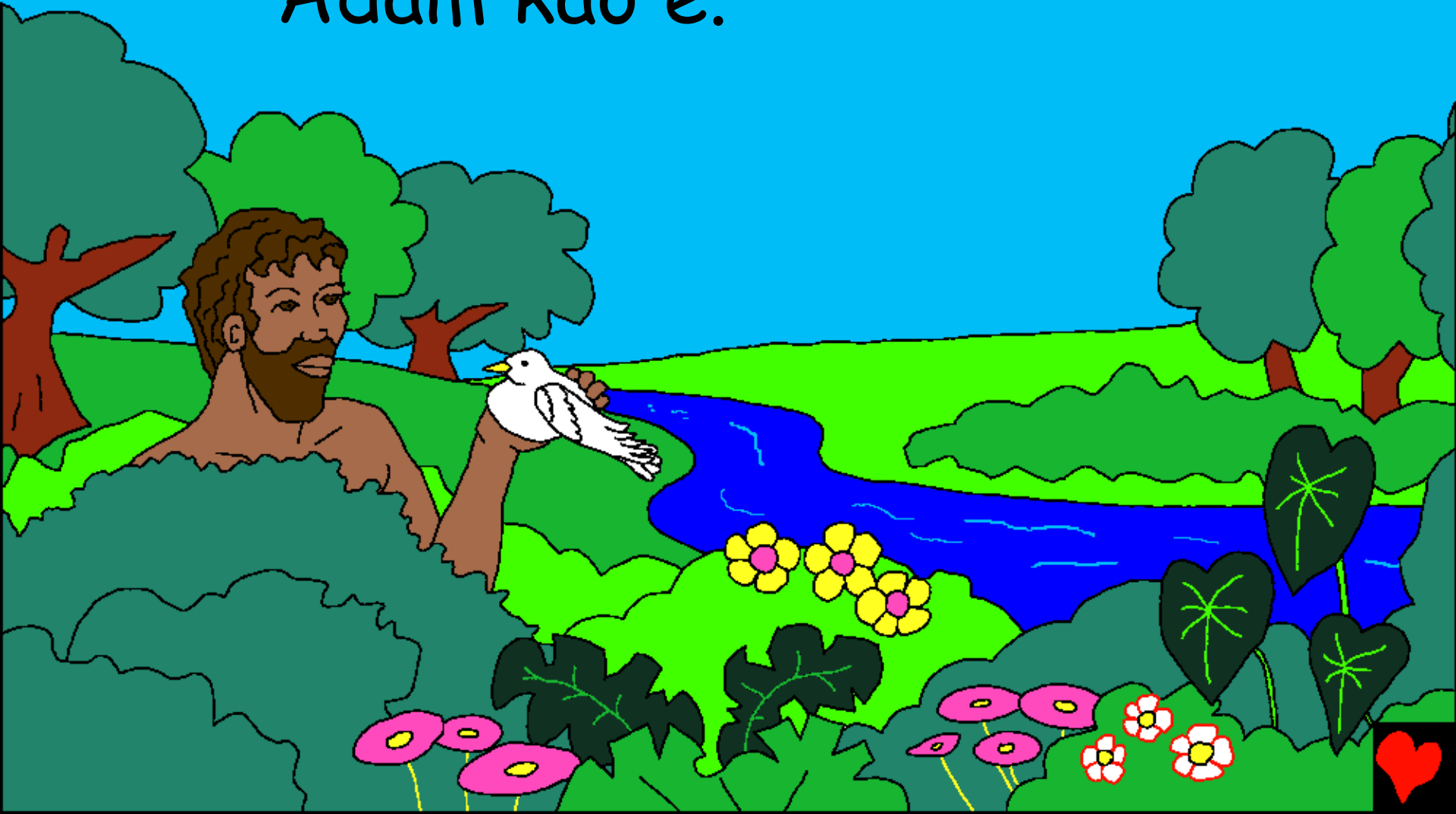
Nu Lou Mei: Nang rui juanv khang ham mak ge  
thei nam pat dat lana sin su nu e.



Thou rui aniu ta dam lou tu cho?  
Raguang lat Baibal/Bible rui mansei  
hei akum na lung thao kan tu cho  
tu mei pary luanry  
din lou e.



Thaurei khou, Raguang rui mansei  
dam lou rei liang khuan mei kajan  
Adam kao e.



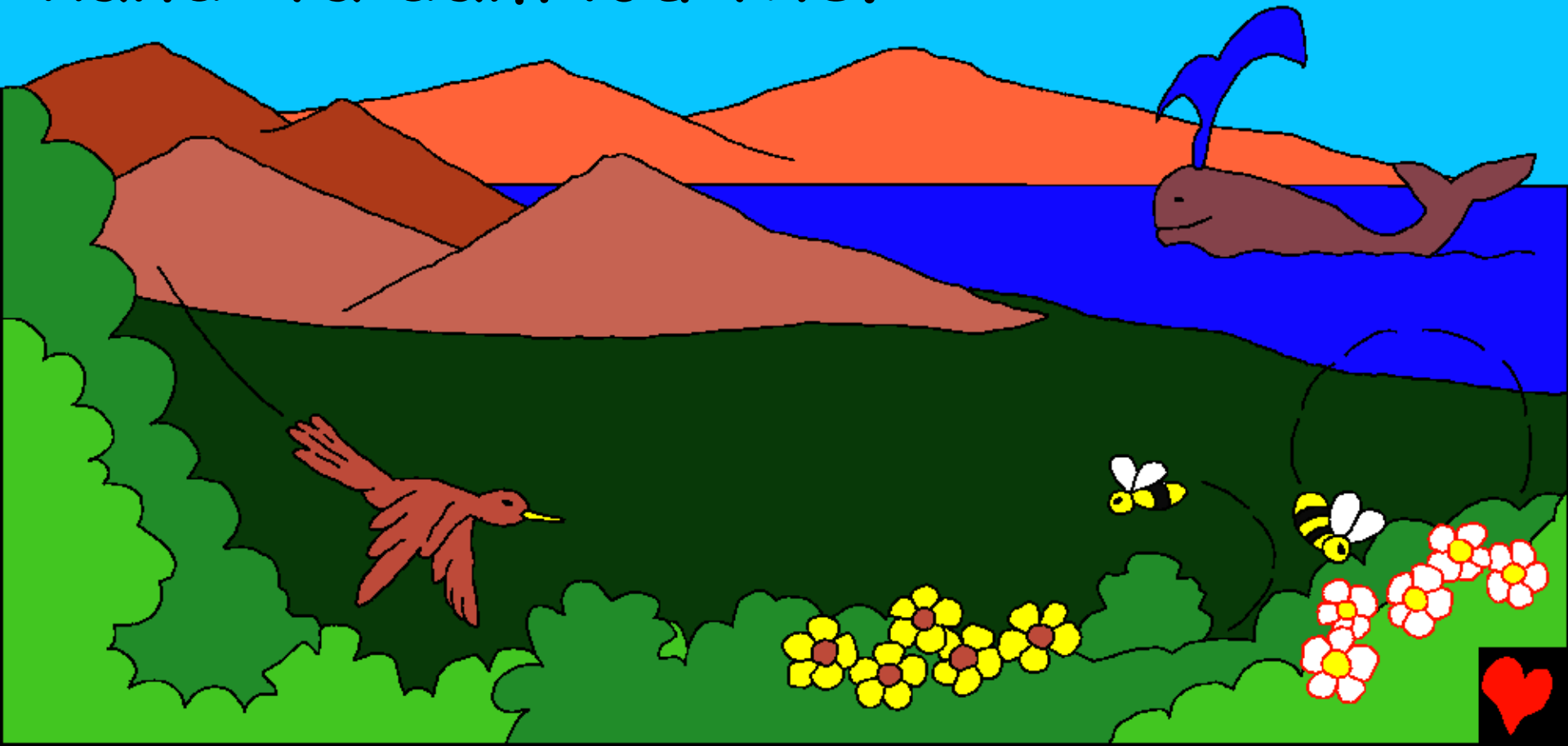
Raguang rui Adam ta kandi taniang  
khou rui kasiam khuane. Raguang rui  
Adam khou ring mei thiu bun lou  
pu khou kamei  
ring the.



Kumna hou gai mei Eden Pikuan kao  
mei khou kara nac ta ti bam lou  
khuon the.



Ranguang rui Adam ta damv mak mei  
hu khou, Kamei rui charin mei puat  
guay hou gai mei rui padik na mi  
kandi ta dam lou the.



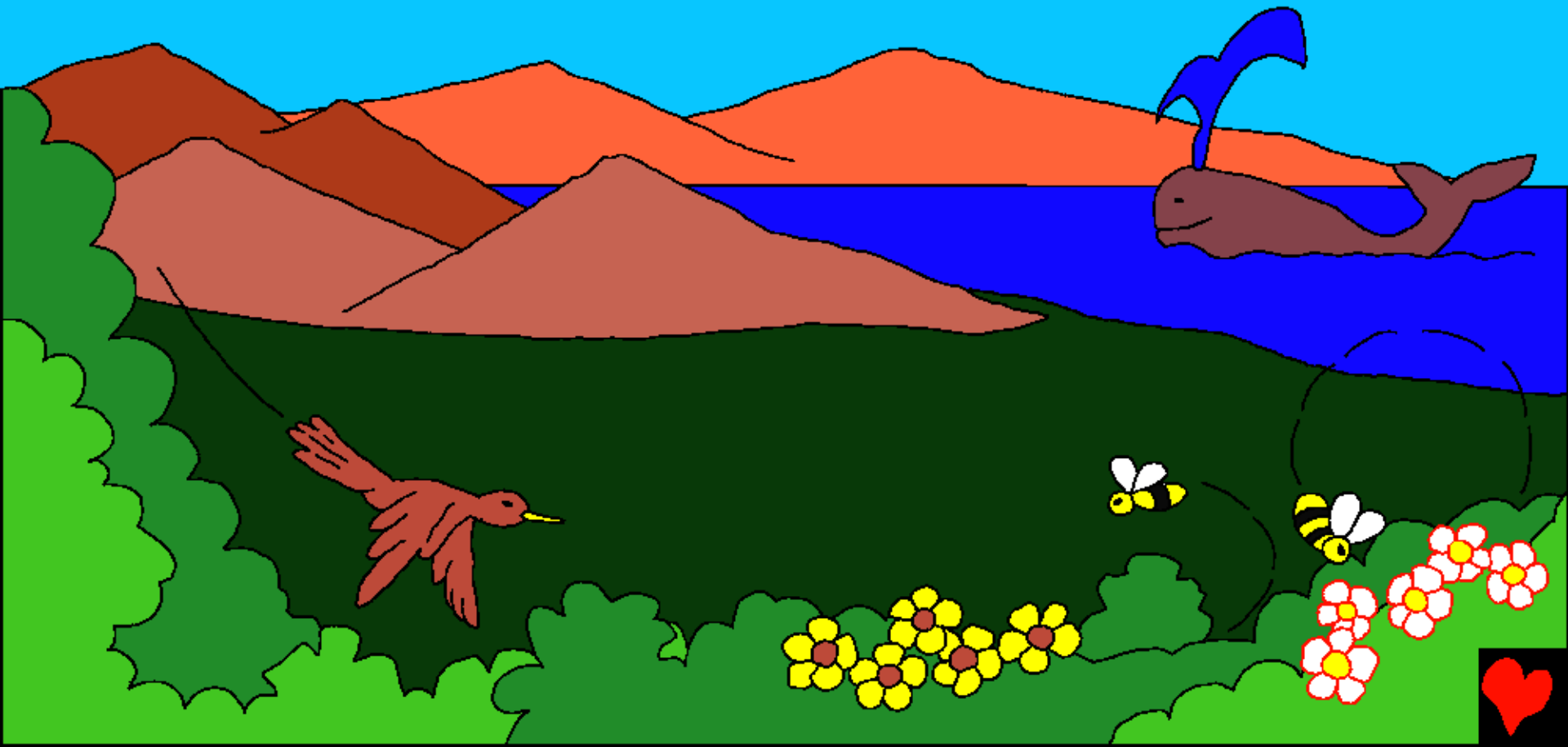
Khat khat su na ching, jangbaek,  
tingpuk, namvgai mei mun, thing nui-  
pannu, thing bang, nruai-thaoruai,  
khouring-khouna kandi khou

nai mei kapum nac  
dam lou the.





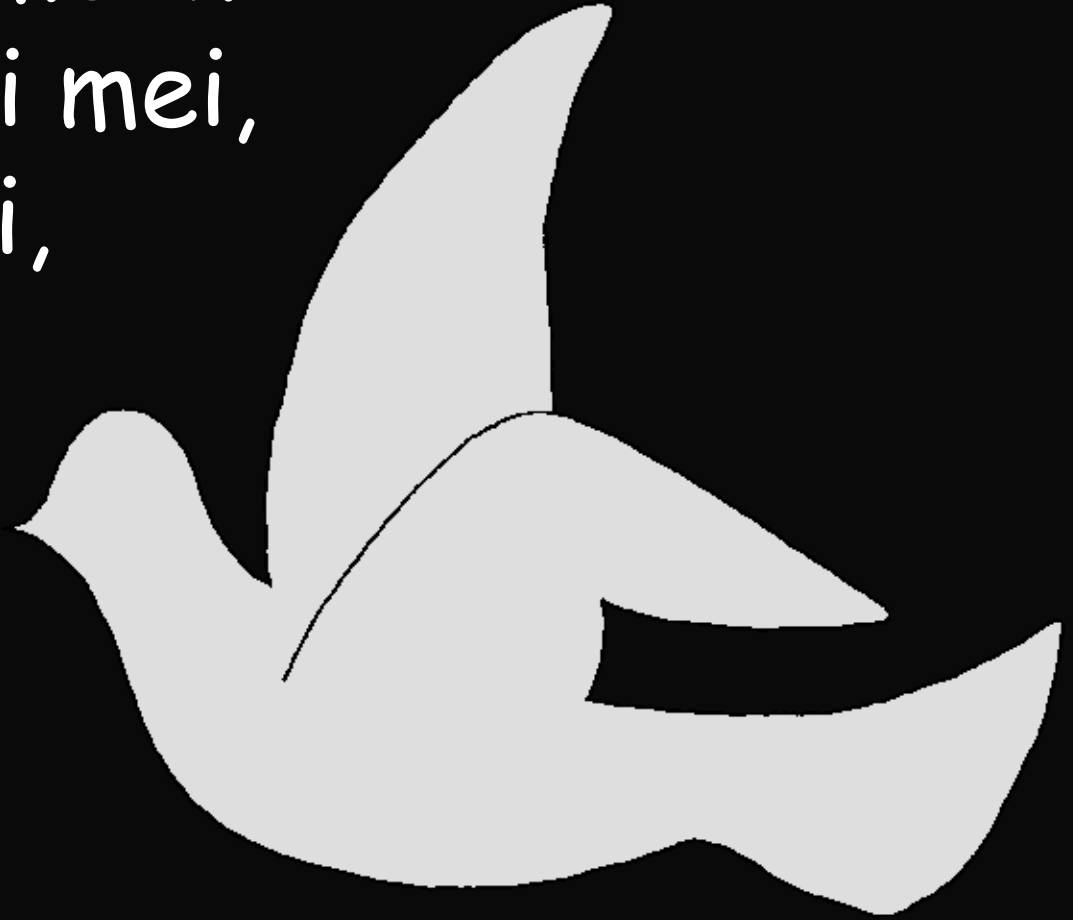
Kaling sing na mi kapum na hei  
Raguang rui dam lou tuange.



Thao rei khou, Raguang  
rui ram kapum na dam  
mak mei hu khou,  
ram mak bam  
khuane tiki  
Raguang kara  
nac khuane.  
Mansei nic, ram  
kapum khat sini  
nai mak khuane.



Zing mei, gaan mei ni  
mak khuane. Kei mei,  
ku mei, doulanei,  
nthuan nic  
mak ge tiki  
Raguang kara  
nac kahou mei  
mak mei pu su  
na nai bam khuane. Kapan  
rui ram guay na taan khuane.



Thao rei khou  
Raguang rui Tingpuk  
khatnic Kandi ta  
dam khuane.



Mi gan khou tei  
kandi tei kalun  
mak na  
khatnic ...



... nsa-karangna  
bam khuane.



Kumna, duidai  
ta zing mei  
rui gum  
zing-zing  
bam  
khuane.



Khou tei Raguang  
rui "Gaany Mei  
Nai Tho"  
tu na  
sa the.





Kou tei gaanv mei pat the.  
Kumna Raguang rui gaanv mei  
ta TINGMIK, zingv mei ta  
ZINGBANG tuna kao the.



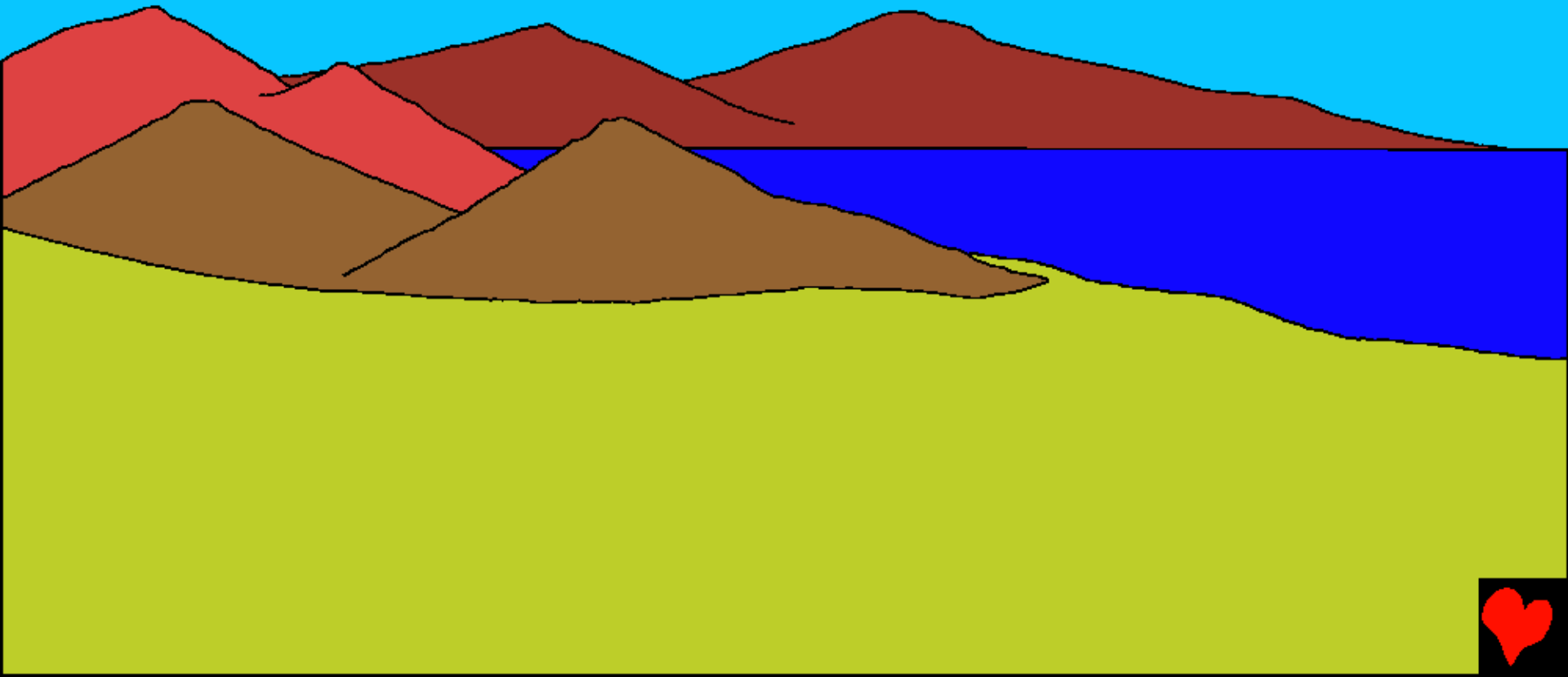
Zing bangc tat kan the, lauthuan  
guang dat the. Mi tei rei mei  
tingmik the.



Kanei mei tingmik nung,  
duipui dui ta Raguang rui ti pat the.  
Duipui, duibuk guay ta tingpuk bang  
khou kaluan lou chui na lou the.



Kathum mei tingmik nung Raguang  
rui ramkaeng di nai kan di tho tuna  
sa the. Khou tei ramkaeng di nai pat  
the.

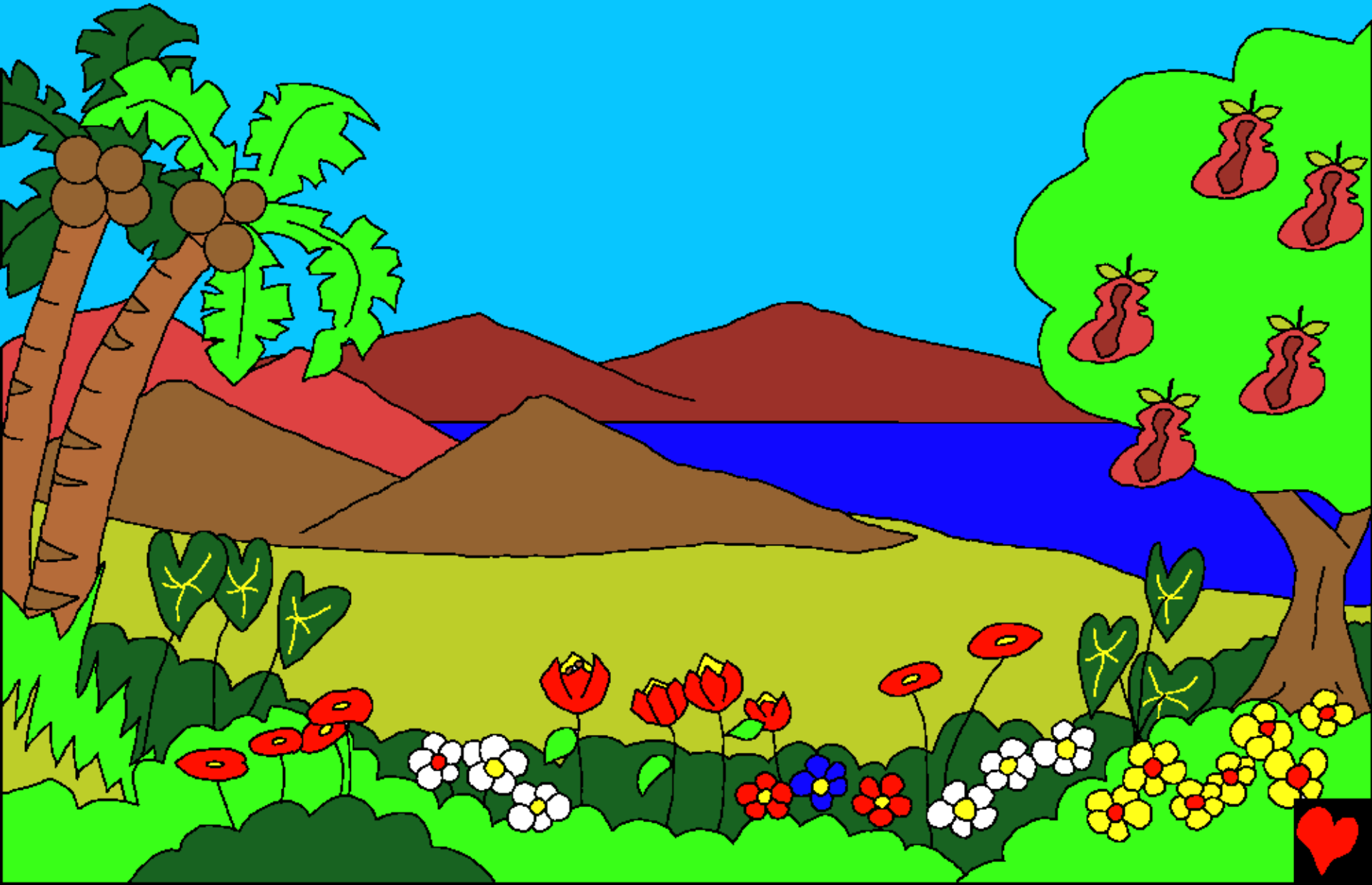


Raguang rui phuai, munpuang,  
thingnui-paannu khatnic  
thingbang guay nic  
nai kan di tho  
tuna

lat dan ti the.



Khou tei nai pat the.



Kumna Raguang rui Nei, Bu  
khatnic Ganchuang na  
mansei rui kasing chak  
dat ngam mak mei aju  
dam lou the.



Zingbang khat tat kan  
the, lauthuan quang  
dat the. Mi hei padei  
mei tingmik the.





Duipui khouring  
guay, kha-ga  
khatnic  
nruai-thaoruai  
hei Raguang  
tuang katuang  
chak khou  
lou khuane.



Kumna tingmik  
pangu pui nei  
Raguang rui  
duipui kha  
daimei,  
nthiamv  
mei, katan  
sangmei duimei  
khouring guay  
dam lou the.



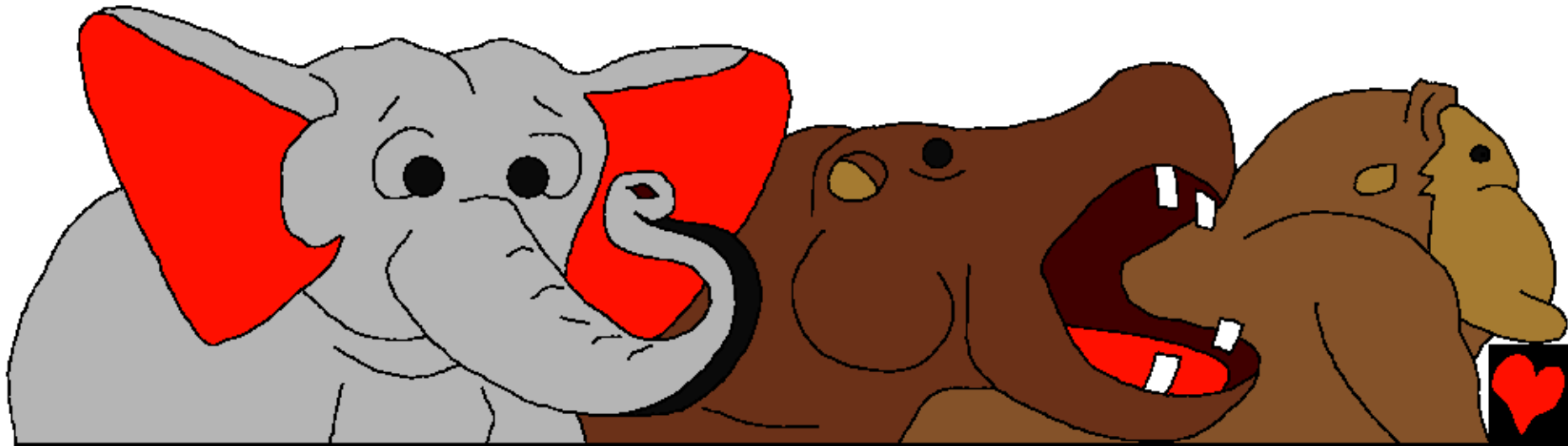
Kumna Raguang  
rui kandi  
namruc, duipui  
khatnic tingpuk  
khou nei la na  
lung bam khang  
lungking-lungkiu  
pat tho tuna  
suaihiam  
lou the.



Zingbang  
tat kan the,  
lauthuan  
guang dat  
the. Mi hei  
pangu mei  
tingmik ge.



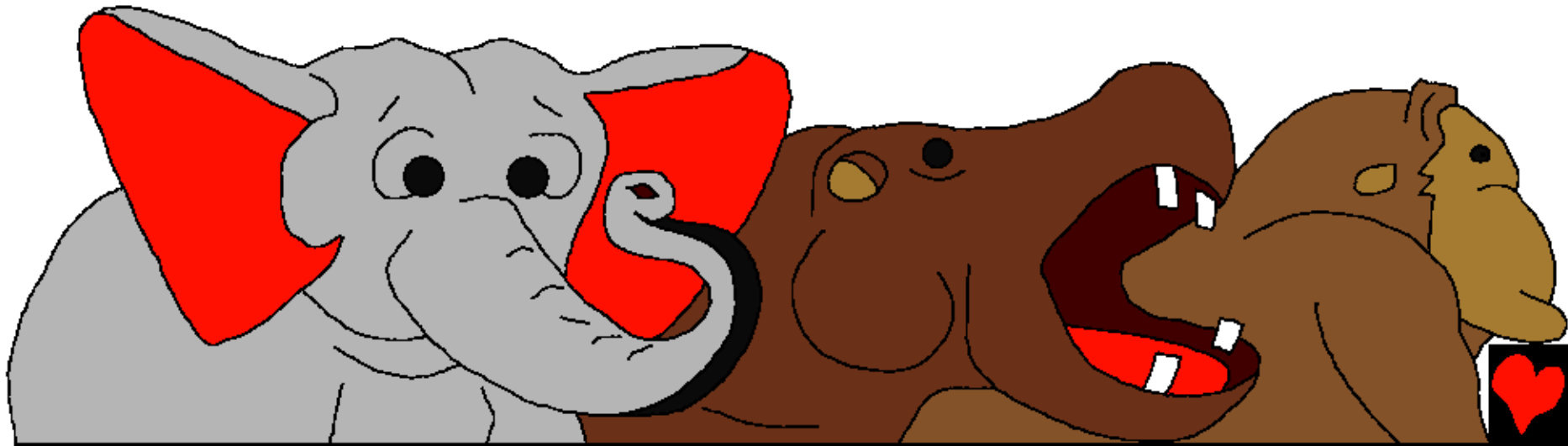
Mi tang tei Raguang rui sa dat the.  
Kamei rui sa the, kandi rui khouring  
jat guai na ti pat kan di tho ... kai  
khouring, numbang khouring,  
khouring daimei nic, nthiammei  
nic tuna sa the.



Khou tei khouring kajat guay na:  
tiang-khuai, kabung rui guangv mei  
khouring, dai mei guipuang, jouc,  
duichaki, chupaliang kajao na mi  
nung tei Raguang rui  
dam lou the.



Kumna zingbang tat kan the,  
lauthuan quang dat the. Mi hei  
charuk mei tingmik the.



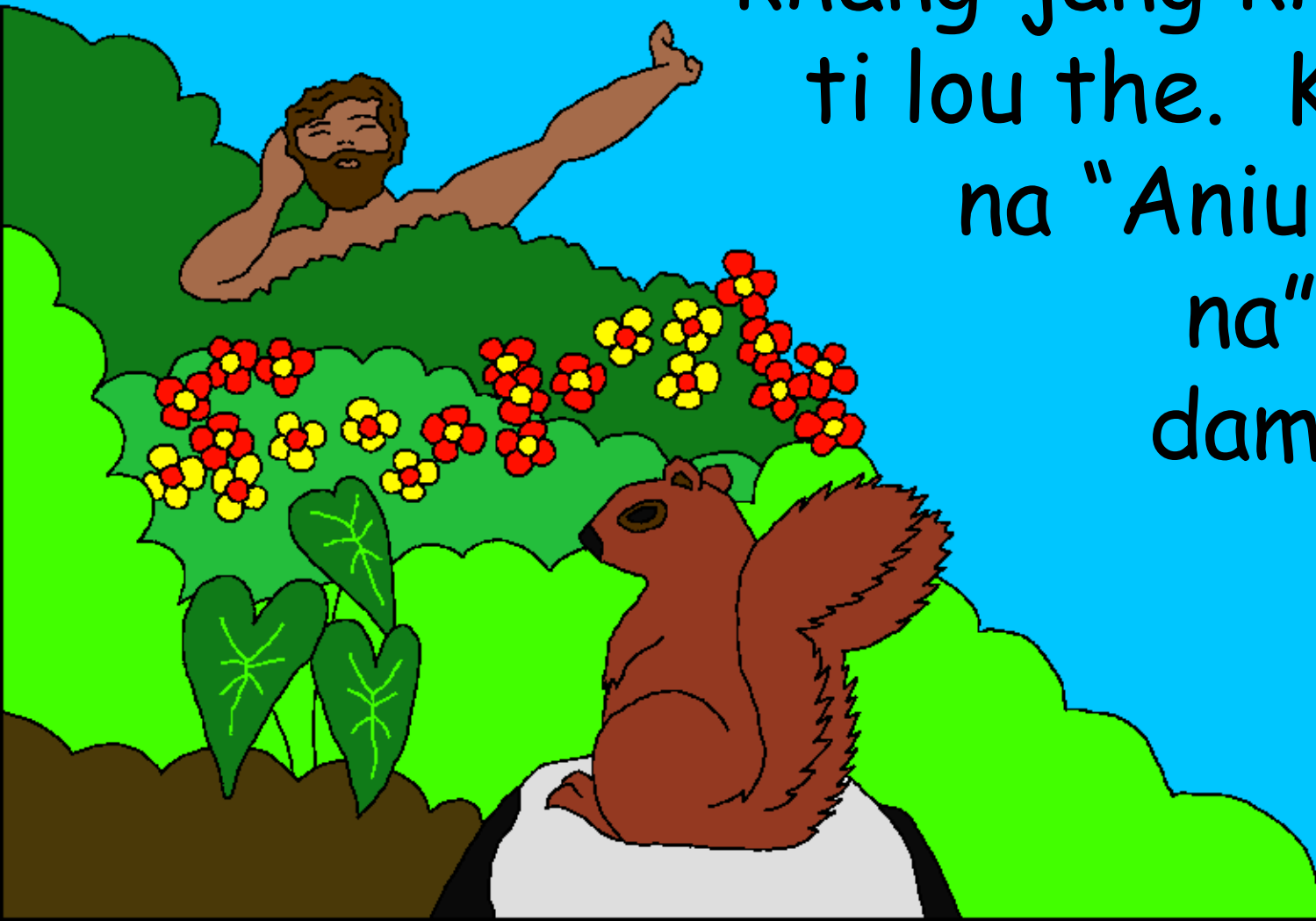
Jang charuk puinung Raguang rui  
ram kapum na dam luai mei tang  
kungliang-gailiang  
mei taan khat kamei  
rui taan khuane.

Mi kiu tho  
mansei  
ta e.





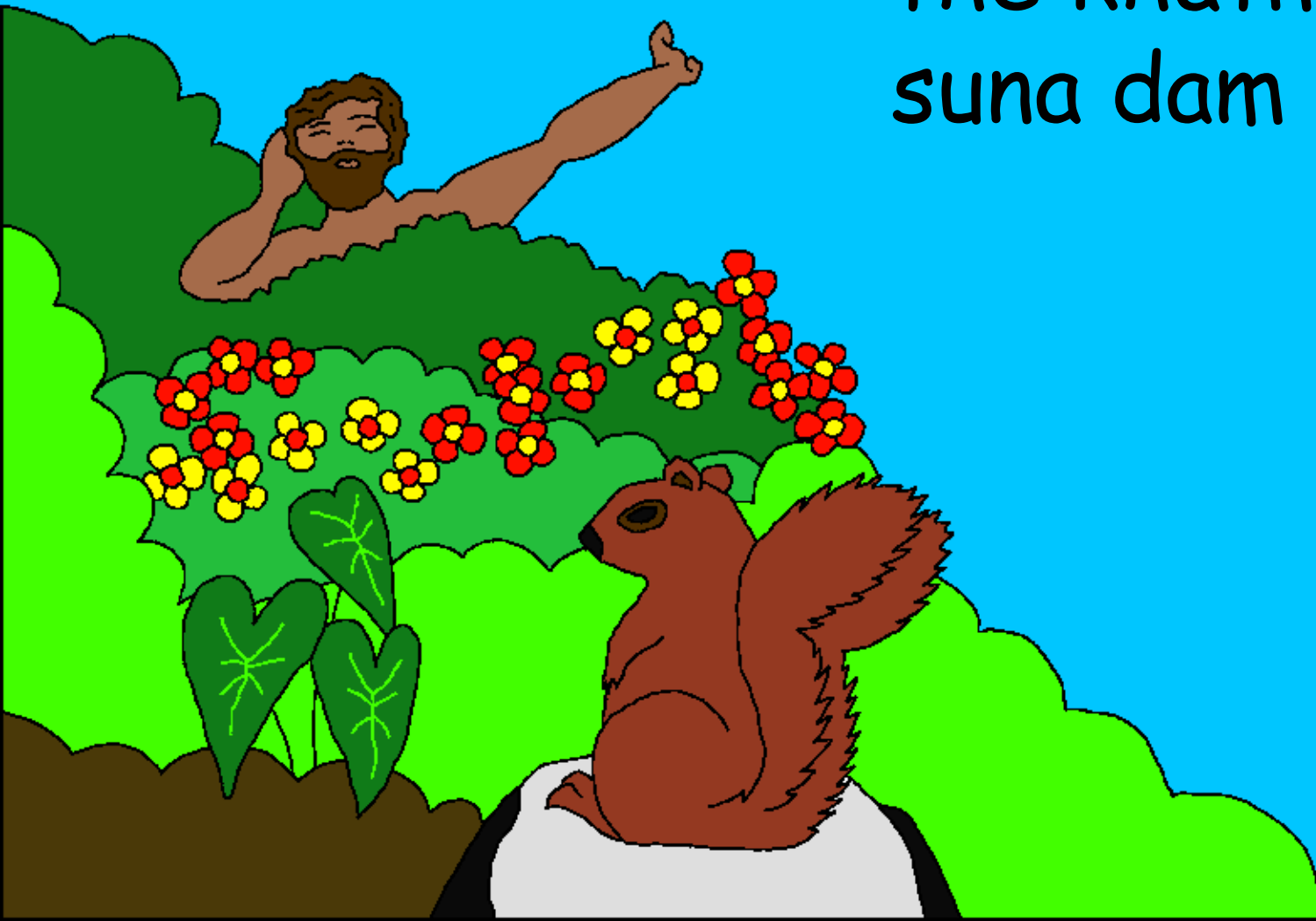
Raguang rui sa the, ntao tho ram  
guai na dam lou ngam the. Tu  
khang-jang khang nic  
ti lou the. Kum the  
na "Aniu lun luic  
na" mansei  
dam di kho.



Kamei rui kandi namru khou nai mei  
khouring-khouna khatnic puat guai  
nac ta sin na kaipou  
su kan di tho tuna  
Raguang rui  
sa the.



Kumna Raguang rui kalun lui  
na mansei ta dam lou  
the khatnic kalun  
suna dam lou the.



Ranguang rui  
Adam khou  
sa the.



Nang rui  
tu nii nic mei  
thing thai mi  
pikuan khou  
mei tu nu the tiki  
sic mei-gai mei  
thay mei thing  
thai bang khou mei  
kathai tho tu nu mak  
ge.



Nang rui mi  
khou mei thai  
tei tu ethei,  
tu pui nung  
rui Nang  
suai mak  
na thei puni.



Mansei nac hei kara na bam  
mei gai mak khe. Kum the  
na kaziab khang Ai rui  
dam lou ni the  
tuna Raguang  
rui sa the.



Raguang rui  
nruai-thaorui,  
khouring-khouna  
guai Adam khou  
laguang the.





Kumna Adam  
rui kajan phuak  
lou the.



Kamei hei, hei hak na  
taan la pui jat de tiki  
mi guai tei rui Adam  
khang cha mei mak khe  
khatnic ti nei la lou  
ngam mak khe.



Kum tikhou, Raguang rui Adam ta  
ti zib thei mang-mang lou na zib bam  
mei naek pai rou tei  
la pat the. Kumna  
Raguang rui Adam  
naek pai rou  
khou tei rui  
n-tu mei ta  
dam the.



Kajan ntumei-Eve tuna kao the.

Raguang rui dam lou mei n-tu mei tei  
ntao tho Adam  
kaduang khang  
cha rap-rap  
the.



Ranguang rui ram kapum na  
tingmik charuk lung khou dam  
tang na dam luai the. Kumna  
jang chanei mei tingmik ta  
nthak nei khang suaihiam  
lou the.



Adam le Eve kanou kanei tei  
nthui mei ram neila neila na  
Raguang lat piu na Eden  
Pikuan khou bam  
khuon the.



Raguang ta ka Raguang su  
the, ti lou mei pu su the  
khatnic duangda su the.



Ranguang rui ram  
kapum na dam luai pu khou

Ranguang tuang lat khou rui Pary,

Baibal/Bible khou rui phange

Thaureimei 1-2

"Nang lat akhou gut lou khou rui gaan  
mei ti lou e." Kalumlu 119:130





Luai Louc Mei



Mi Baibal pary rui charin mei Raguangc aniu ta dam  
lou mei pu lam din lou e khatnic kamei rui nang niu  
ta nic kalam ti thai ni na bam e.

Raguang thu aniu rui si mei taan taanc lou mei guai  
thai na bam e. Mi ta tei pap tuna kao e. Pap tuang  
taanphi thu thei mei di the tiki Raguang rui nbaan  
ta hei di kam njian lou na Kana Mpou khatna mei ta  
kros khou nang pap jang nang phaen thei lou khang  
ndiu kei lou the. Kamei thei lou na Ringthao dat na  
Tingkao tat kan the. Nang rui kakhou lum lou na  
nang pap guai kuak lou khang nei ethei, kamei rui  
guang lou na nang khou lung lou puni. Ntao tumei  
hei nang khang kagan di the Jisu ta la lou khang.  
Nang rui la lou na lum lou ethei, Kamei le Tingsaeng  
lung ncham puni the.



Nang rui la lou na lum lou ethei, Raguang khou huainei tho. Jianmei JISU, Nang hei Ringsuang mei Raguange tumei Ai lum the. Nang rui apap jang khang kandi khou mansei lun lui na guang na kros khou thei lou the. Kumna thei mei ta ngam lou na Ringthao dat kan the. Apanti khou nic guang lung lou pu o khatnic apap guai kuak lou pu o, hei kum ethei Ai nic kathan mei panti khou lung ngam khang; Ai ni nang thei lai ni e khatnic tingsaeng ringsuang mei panti lani e. Nang lat piu khang nkha lou o khatnic nang nac su khang jian lou o. Jisu jan khou AMEN.

Jahon 3:16 tei tingmik pum pana huainei na Raguang ta kachu o.

