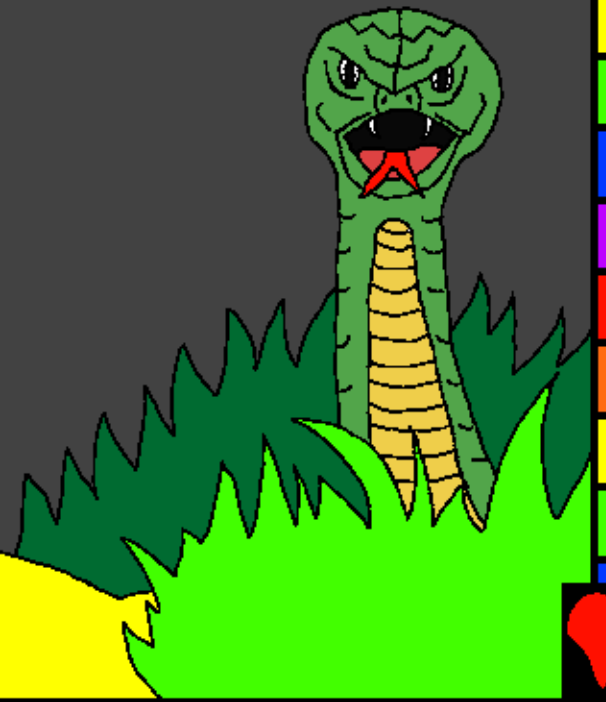


Alao guai khang Baibal
Kaipat ti Louc Mei

Mansei tuang
Neila Kahou Mak
Mei



Himei: Edward Hughes

Kaba Dinv Louc Mei: Byron Unger; Lazarus
Alastair Paterson

Kaluan Kasiamv Louc Mei: M. Maillot; Tammy S.

Hanc Pat Louc Mei: Katasin Kamei

Liangpatc Louc Mei: Bible for Children
www.M1914.org

©2020 Bible for Children, Inc.

Nu Lou Mei: Nang rui juanv khang ham mak ge thei
nam pat dat lana sin su nu e.



Raguang rui ram kapum na dam lou
the! Kumna rei mei mansei Adam
khatnic kanou Eve ta Eden Pikuan
khou dam lou khou tei Kanei tei nthui
mei ram neila neila na Raguang lat piu
na bam khuane. Tiki nei
khat kanei neila mei mak
na rianra thao
khuan the.





Thing thai bang
kaguai na khou mei
thai tu riu tuna
Raguang rui sa lou
bo? tuna Eve khou
nrui tei rui thanv
the. Kaguai na tu
nu de tiki khatna
tho tu rio tu e, tu
rap ethei nang
thei puni.





Kahi sini kahi riu
tuna sa e tuna
Eve rui mundao
the. Nang thei
ni tu ham e tuna
nrui tei rui nui
na sa the.





Nang kamei kum
puni the tuna
nrui rui sa the.
Khou tei Eve rui
thingthai tei tuni
thao the. Nrui lat
tei nking lou na
Eve rui thingthai
tei laa na tu the.



Eve rui Raguang lat piu mak mei
tang, Adam ta nic thingthai tei
ti tu the. Adam nic Ai tu lak
ge, Raguang lat liam lak ge
tuna sa ni tuange
tiki sa mak khe.





Adam le Eve tei rui Raguang lat
piu mak na pap su mei gan khou kanei gaan
nei mei tei paliu the. Kum tina tadut nui
rui hui kariu lana pheii suai khang su the.





Ranguang rui kanei ta hou mak khang
tuna kanei rana su liam lana ramsung
lim khou nkam bam khuan the.



Nchu mei tingjin quang pu khou
Raguang rui Pikuan khou tei quang the.
Kamei rui Adam le Eve tuang taan guai
tei thai the. Adam rui Eve ta khuai
nkham lou the, Eve rui nrui ta khuai
nkham lou the. Nrui ta siang lou the,
N-tu mei nic na puan pu khou
rianra puni the tuna Raguang
rui sa the.



Adam, nang rui pap su pui jang
rui puluai-sauluai thao khang
kandi ta siang lou the. Nang
talan dui rui nang tu-jang khang
taan puni the tuna Raguang rui
sa the.



Adam le Eve kanei rui pap su
puijang rui Raguang rui kanei
ta charin mei Pikuan khou
rui kathau pat the.
Kumna Ringmei
Raguang khou
rui n-tam the.





Raguang rui kanei ta mai tuang
bangsang rui kathau pat lou na
kanei khang ramgi pheu ti piu
lou the. Mi ramgi hei
tabui thang
rui Raguang
kamei la
tu cho?



Mi gan khou tei Adam le Eve kanei kaikhun suna reilang mei na mpou puan the. Kajan rui Cain tuna kao e. Mi tang kanei mei mpou puan dat khuane.

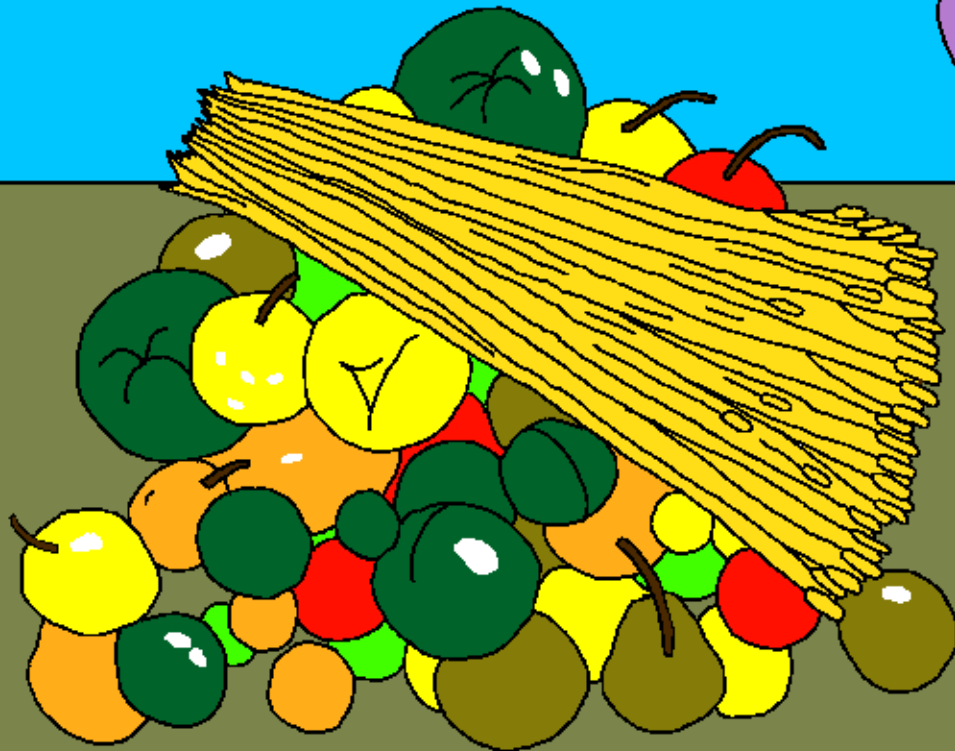
Kajan rui Abel kao e. Cain thu lao taan mei e tiki Abel thu laojiu gang mei pu e.



Neikhat hei Cain rui Raguang khang kaipat khang
katuang phuling phung quang khuane. Tiki Abel
tho katuang laojiu pang khou rui gailiang mei phung
guang khuane. Khou tei Abel ta
Raguang kalung kun lou kuan
the katnic pian
lou the.



Tiki Cain ta tho Raguang rui pian lou lou
mak khe. Khou tei Cain rui Raguang ta
kalung puam the. Nang rui nchum na
taan ethei thou rui nang tuang kaipat
la lou mak puni na cho tuna Raguang
rui Cain khou tei sa the.



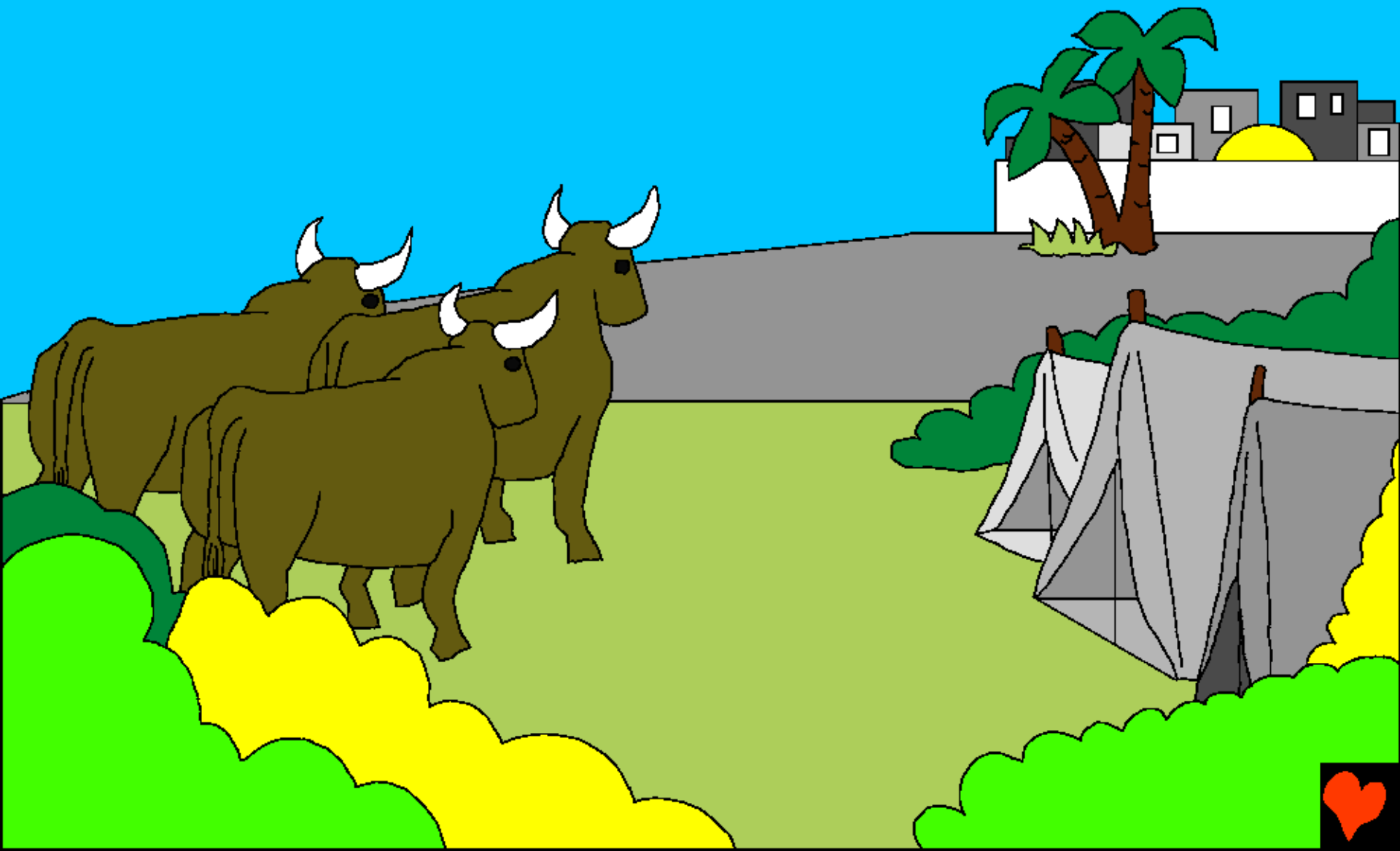
Tiki Cain lungpuam tei nchu kei
mak khe. Kanak bam pu khou
Cain rui lao thang kei na, ka kai
na Abel ta athung the. Kumna
kata su luai the.



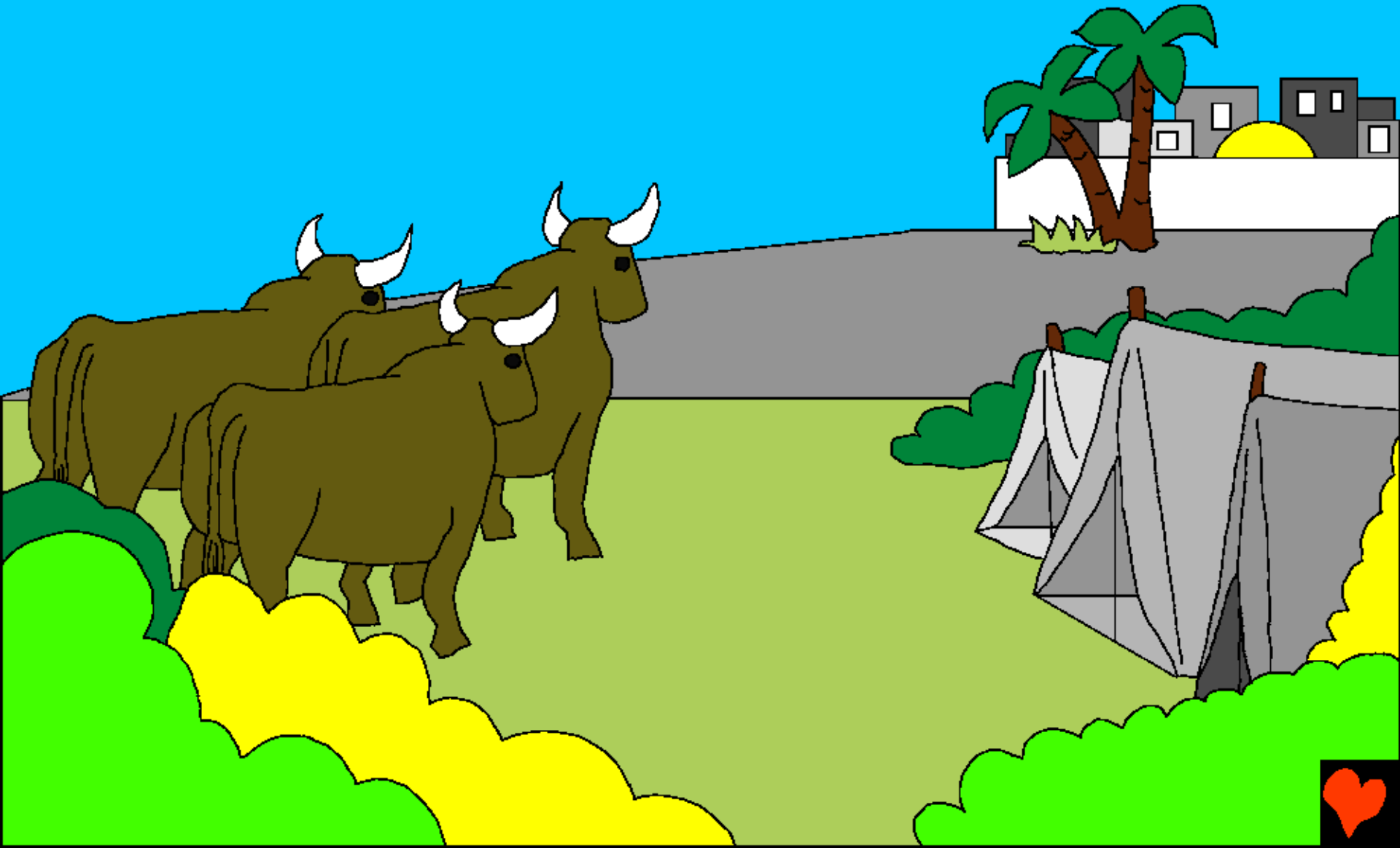
Nang kai nac Abel tho tabui thang tat kan na cho? tuna Raguang rui Cain khou tei sa the. Ai thai mak ge, akai nac ta Ai jao bam mei pu e na cho? tuna Cain rui dao the. Mi khou tei rui thao na Cain ta Raguang rui pikuan lao taan bam mei khou tei rui kakai-kalao mak na ruan tat mei mansei ti su lou the.



Cain tei Raguang khou rui tat pat lana
kaikhun duan lana lung tat kan the.



Kumna, Cain nic kana, katou, katak
gei pat na kandi lung padik pat the.



Kumna, Adam le Eve rui kakik-kata
gei na lung pat khuan the. Mi dou tei
tho ntao khang suang mansei guai tei
kapanti sang na lung khuane.



Adam le Eve rui kana mpou Seth puan
dat the. Raguang rui Abel phaan ti lou
tuang the tuna sa na Eve rui kajan
Seth phuak the.



Seth tei Raguang ta thai mei pu suna
kating kum 912 tang na lung lou khuane.
Kakik-kata nic aju nai lou du khuane.



Kanak quang pu khou mi kandi khou lung
bam mei mansei guai na hei si khit khit
thao the. Hei kum tina Raguang rui
nkham khou mansei guai na ta Ai
rui su man ngam ni the tuna
kalung ding the
khatnic ...



... Khouring-khouna khatnic
nruai-thaoruai kata na, Mansei
ta dam lou mei khang Raguang
rui kalung kabiou the.



Tiki Seth na mpou kajan Noah
kao mei pu tho Rachap tat na
khan bam mak na lung bam
khuane. Kamei Raguang
le tat ncham na bam
mei pu e.



Kamei kana mpou kathum nic
nai khuane. Kaniu ta Raguang
lat piu khang kamei rui ncham
lou na bam khuane.



Kumna, Raguang rui Noah ta
kathan mei khatnic gailiang
mei kadat dat mei thiak khou
sin su khang kakhan the.



Mansei tuang Neila Kahou Mak Mei

Raguang tuang lat khou rui Pary,

Baibal/Bible khou rui phange

Thaureimei 3-6

"Nang lat akhou gut lou khou rui gaan
mei ti lou e." Kalumlu 119:130



Luai Louc Mei



Mi Baibal pary rui charin mei Raguangc aniu ta dam lou mei pu lam din lou e khatnic kamei rui nang niu ta nic kalam ti thai ni na bam e.

Ruang thu aniu rui si mei taan taanc lou mei guai thai na bam e. Mi ta tei pap tuna kao e. Pap tuang taanphi thu thei mei di the tiki Ruang rui nbaan ta hei di kam njian lou na Kana Mpou khatna mei ta kros khou nang pap jang nang phaen thei lou khang ndiu kei lou the. Kamei thei lou na Ringthao dat na Tingkao tat kan the. Nang rui kakhou lum lou na nang pap guai kuak lou khang nei ethei, kamei rui guang lou na nang khou lung lou puni. Ntao tumei hei nang khang kagan di the Jisu ta la lou khang. Nang rui la lou na lum lou ethei, Kamei le Tingsaeng lung ncham puni the.

Nang rui la lou na lum lou ethei, Ruang khou huainei tho. Jianmei JISU, Nang hei Ringsuang mei Raguange tumei Ai lum the. Nang rui apap jang khang kandi khou mansei lun lui na guang na kros khou thei lou the. Kumna thei mei ta ngam lou na Ringthao dat kan the. Apanti khou nic guang lung lou pu o khatnic apap guai kuak lou pu o, hei kum ethei Ai nic kathan mei panti khou lung ngam khang; Ai ni nang thei lai ni e khatnic tingsaeng ringsuang mei panti lani e. Nang lat piu khang nkha lou o khatnic nang nac su khang jian lou o. Jisu jan khou AMEN.

Jahon 3:16 tei tingmik pum pana huainei na Ruang ta kachu o.

