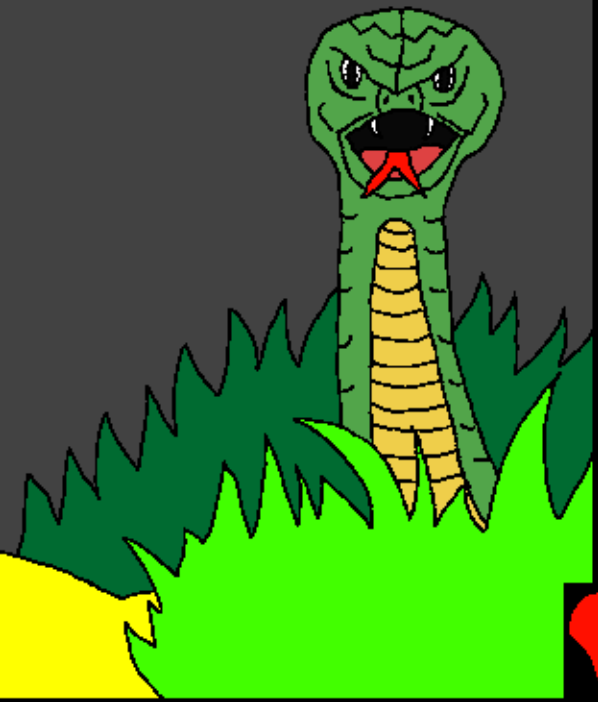


Alao guai khang Baibal  
Kaipat ti Louc Mei

Mansei tuang  
Neila Kahou Mak  
Mei



Himei: Edward Hughes

Kaba Dinv Louc Mei: Byron Unger; Lazarus;  
Alastair Paterson

Kaluan Kasiamv Louc Mei: M. Maillot; Tammy S.

Hanc Pat Louc Mei: Katasin Kamei

Liangpatc Louc Mei: Bible for Children  
[www.M1914.org](http://www.M1914.org)

©2020 Bible for Children, Inc.

Nu Lou Mei: Nang rui juanv khang ham mak ge  
thei nam pat dat lana sin su nu e.



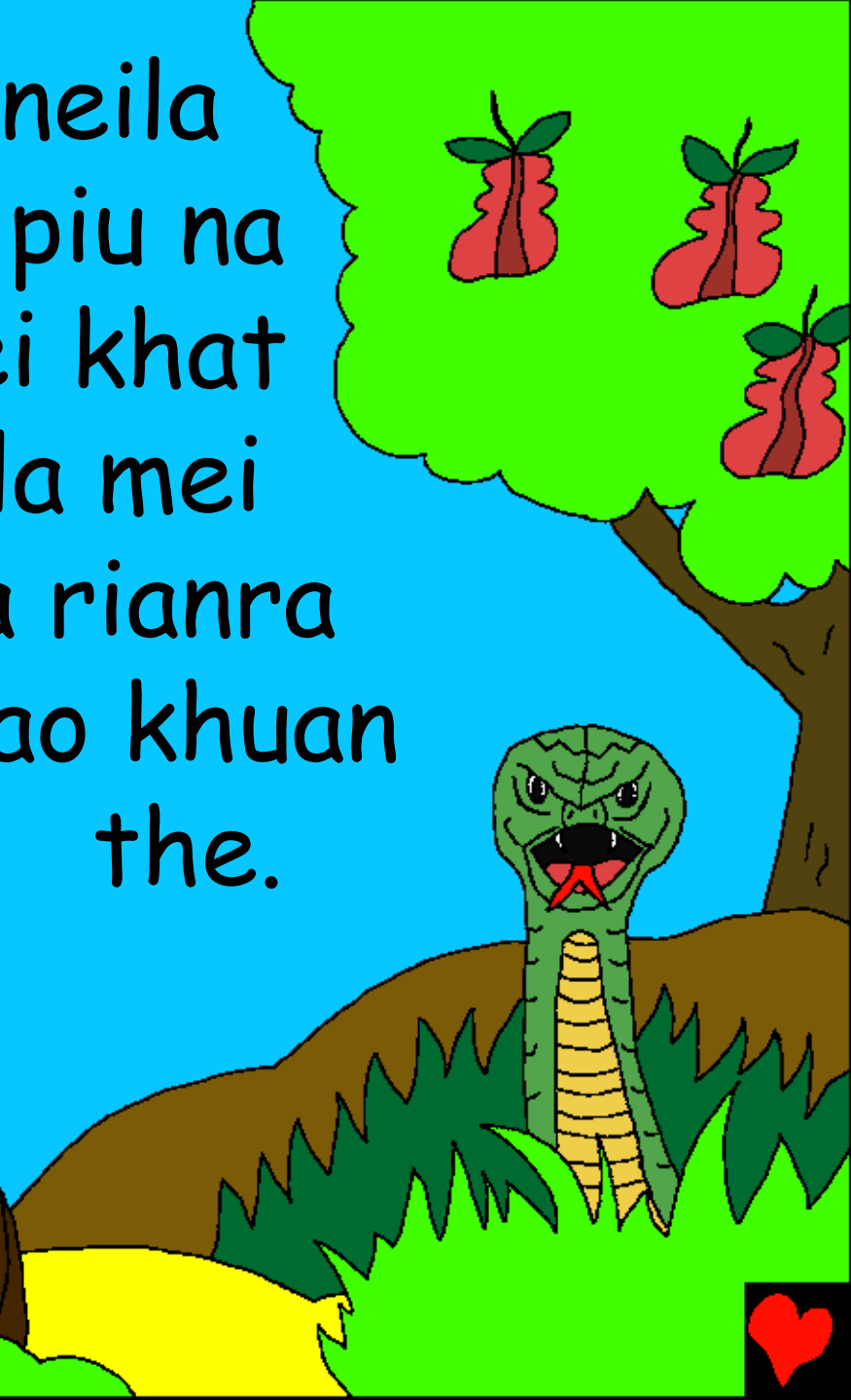
Ranguang rui ram kapum  
na dam lou the!



Kumna rei mei mansei  
Adam khatnic kanou Eve  
ta Eden Pikuan khou dam  
lou khou tei  
Kanei ...



... tei nthui mei ram neila  
neila na Raguang lat piu na  
bam khuane. Tiki nei khat  
kanei neila mei  
mak na rianra  
thao khuan  
the.



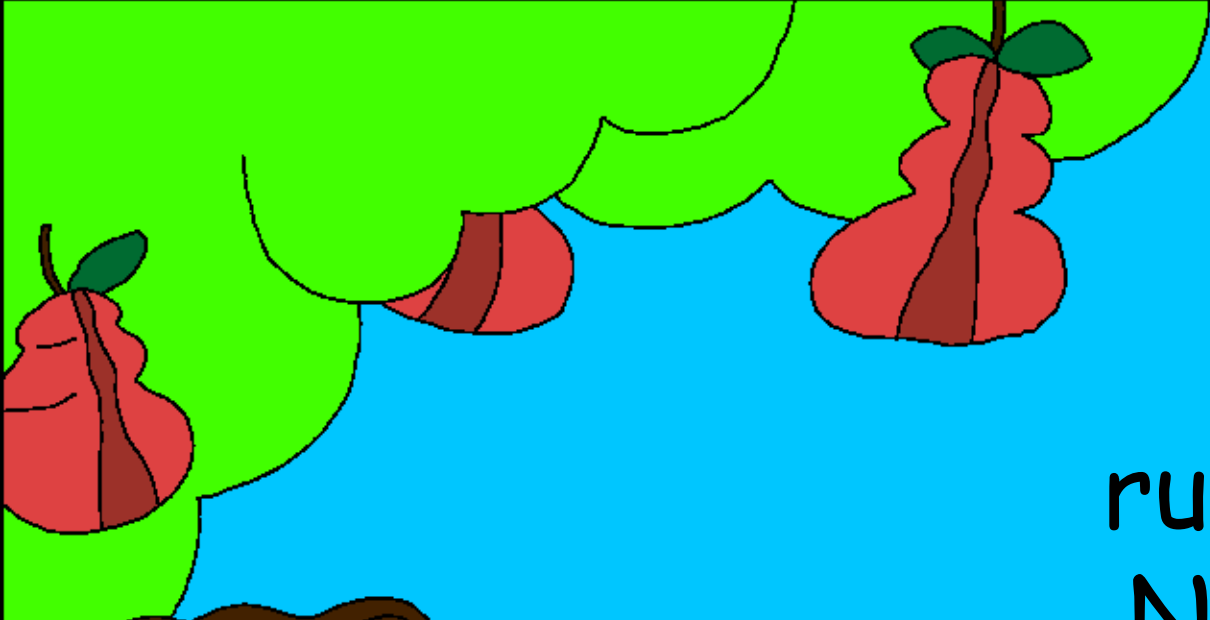


Thing thai  
bang kaguai na  
khou mei thai tu  
riu tuna Raguang rui  
sa lou bo? tuna  
Eve khou nrui  
tei rui thanv the.



Kaguai na  
tu nu de tiki  
khatna tho tu  
rio tu e, tu rap  
ethei nang  
thei puni.






Kahi sini  
kahi riu tuna  
sa e tuna Eve  
rui mundaο the.  
Nang thei ni tu  
ham e tuna nrui  
tei rui nui na  
sa the.







Nang kamei  
kum puni the  
tuna nrui rui  
sa the. Khou tei  
Eve rui thingthai  
tei tuni  
thao the.



Nrui lat tei  
nking lou na  
Eve rui  
thingthai  
tei laa na  
tu the.



Eve rui Raguang lat piu  
mak mei tang, Adam ta  
nic thingthai tei ti tu  
the.



Adam nic Ai tu lak ge,  
Raguang lat liam lak  
ge tuna sa ni tuange  
tiki sa mak  
khe.





Adam

le Eve tei rui Raguang lat  
piu mak na pap su mei gan khou  
kanei gaan nei mei tei paliu the.





Kum tina  
tadut nui rui hui kariu  
lana pheisuai khang su the.





Ranguang rui  
kanei ta hou mak khang tuna  
kanei rana su liam lana ramsung  
lim khou nkam bam khuan the.



Nchu mei tingjin guang pu  
khou Raguang rui Pikuan  
khou tei guang the. Kamei  
rui Adam le Eve tuang  
taan guai tei thai the.





Adam rui Eve ta khuai nkham  
lou the, Eve rui nrui ta khuai  
nkham lou the. Nrui ta  
siang lou the, N-tu mei  
nic na puan pu khou  
rianra puni the tuna  
Raguang rui  
sa the.



Adam, nang rui pap su pui  
jang rui puluai-sauluai thao  
khang kandi ta siang lou the.

Nang talan dui rui nang  
tu-jang khang taan puni  
the tuna Raguang  
rui sa the.





Adam le Eve kanei rui  
pap su puijang rui Raguang  
rui kanei ta charin  
mei Pikuan khou rui  
kathau  
pat the.



Kumna Ringmei  
Raguang khou rui  
n-tam the.





Raguang  
rui kanei ta mai tuang  
bangsang rui kathau  
pat lou na kanei khang  
ramgi phe  
ti piu  
lou the.





Mi rangi hei  
tabui thang  
rui Raguang  
kamei la  
tu cho?



Mi gan khou tei Adam le Eve kanei  
kaikhun suna reilang mei na mpou  
puan the. Kajan rui Cain  
tuna kao e.



Mi tang kanei mei mpou puan dat  
khuane. Kajan rui Abel kao e. Cain  
thu lao taan mei e tiki  
Abel thu laojiu  
gang  
mei  
pu e.





Neikhat hei Cain rui Raguang khang  
kaipat khang katuang phuling phung  
guang khuane.



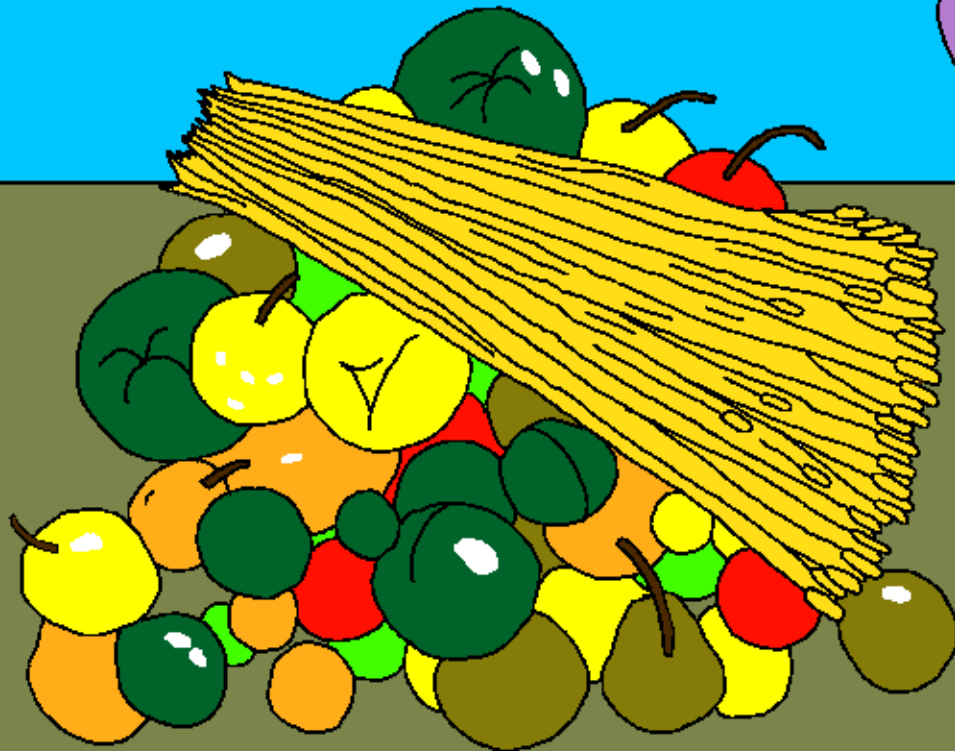
Tiki Abel tho katuang laojiu pang  
khou rui gailiang mei phung quang  
khuane.



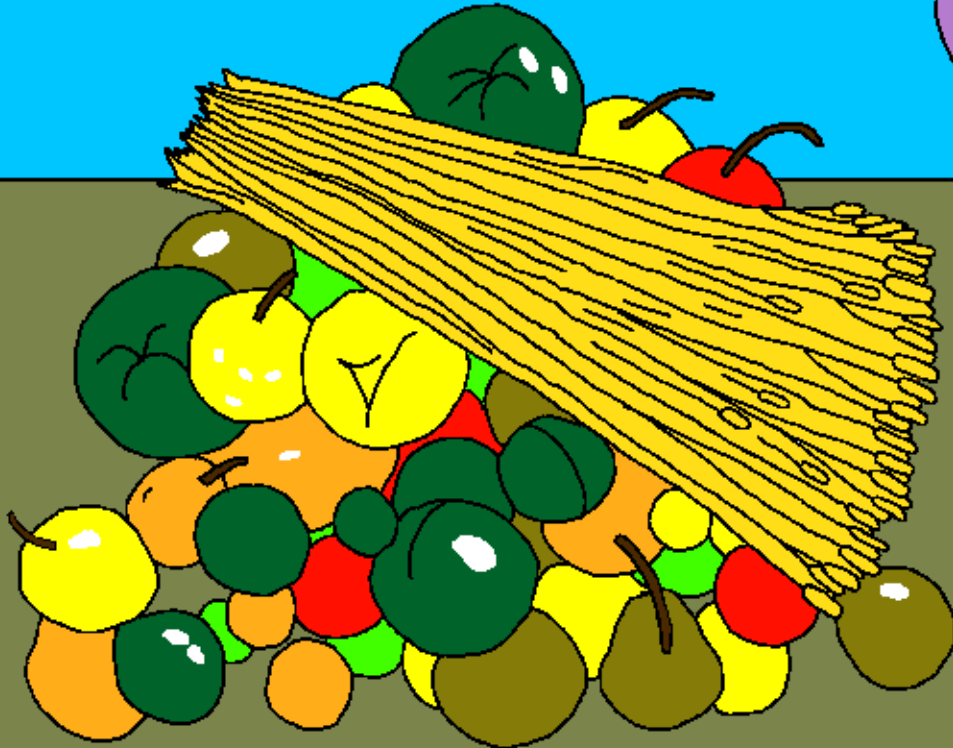
Khou tei Abel ta Raguang kalung kun  
lou khuan the katnic pian lou the.



Tiki Cain ta tho Raguang rui  
pian lou lou mak khe. Khou  
tei Cain rui Raguang ta  
kalung puam the.



Nang rui nchum na taan  
ethei thou rui nang tuang  
kaipat la lou mak puni na  
cho tuna Raguang rui  
Cain khou tei sa the.



Tiki Cain lungpuam tei nchu kei mak  
khe. Kanak bam pu khou Cain rui lao  
thang kei na, ka kai na  
Abel ta athung the.

Kumna kata  
su luai  
the.



Nang kai nac Abel tho tabui thang  
tat kan na cho? tuna Raguang rui  
Cain khou tei sa the.



Ai thai mak ge, akai  
nac ta Ai jao bam mei  
pu e na cho? tuna  
Cain rui dao the.

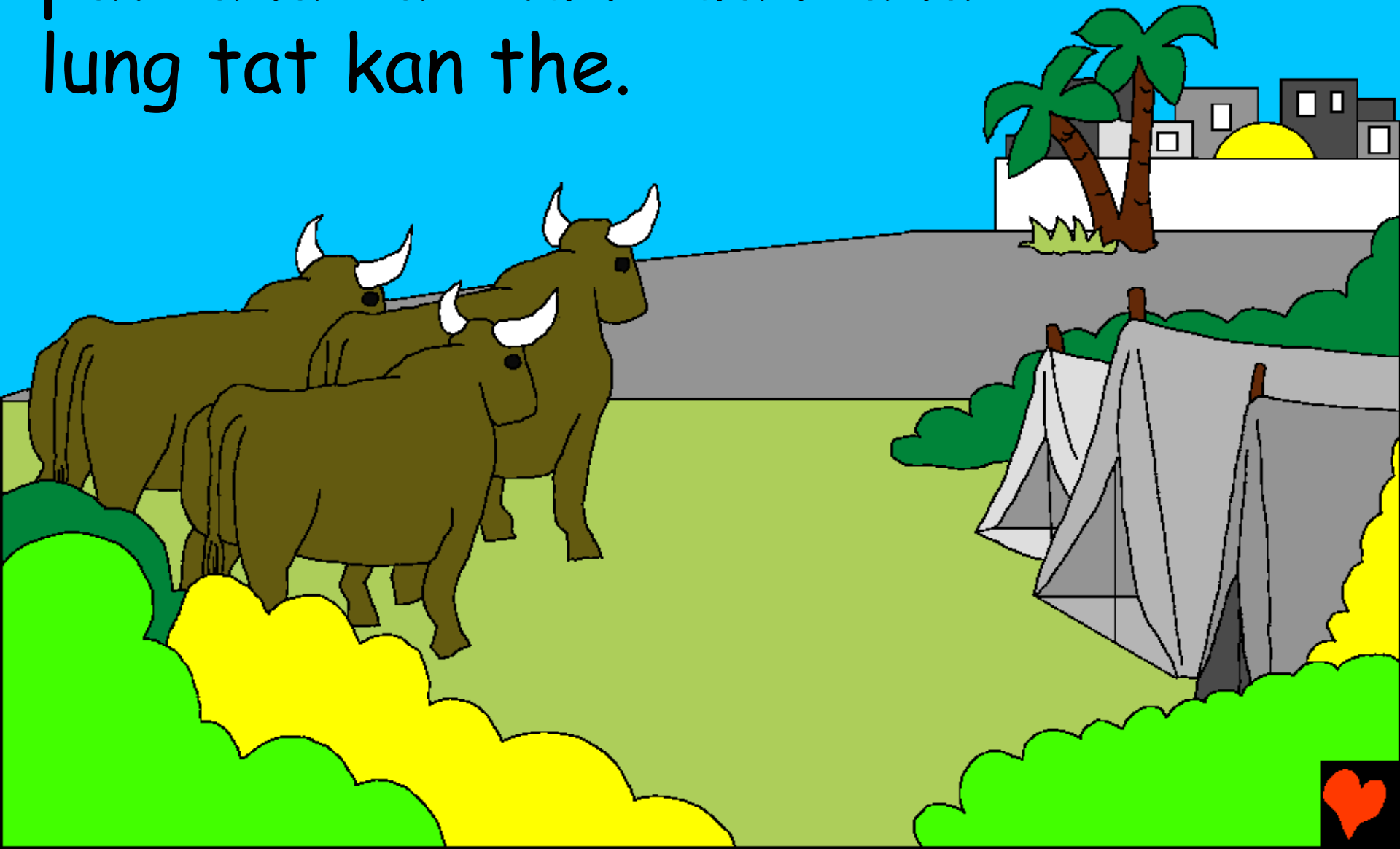




Mi khou tei rui thao na Cain ta  
Raguang rui pikuan lao taan bam mei  
khou tei rui kakai-kalao  
mak na ruan tat mei  
mansei ti su lou the.



Cain tei Raguang khou rui tat  
pat lana kaikhun duan lana  
lung tat kan the.



Kumna, Cain nic kana,  
katou, katak gei pat na  
kandi lung padik pat the.



Kumna, Adam le Eve rui kakik-kata  
gei na lung pat khuan the.



Mi dou tei tho ntao khang  
suang mansei guai tei kapanti  
sang na lung khuane.



Adam le Eve rui kana mpou  
Seth puan dat the.



Ranguang rui Abel phaam ti lou  
tuang the tuna sa na Eve rui  
kajan Seth phuak the.



Seth tei Raguang ta thai mei  
pu suna kating kum 912 tang  
na lung lou khuane.

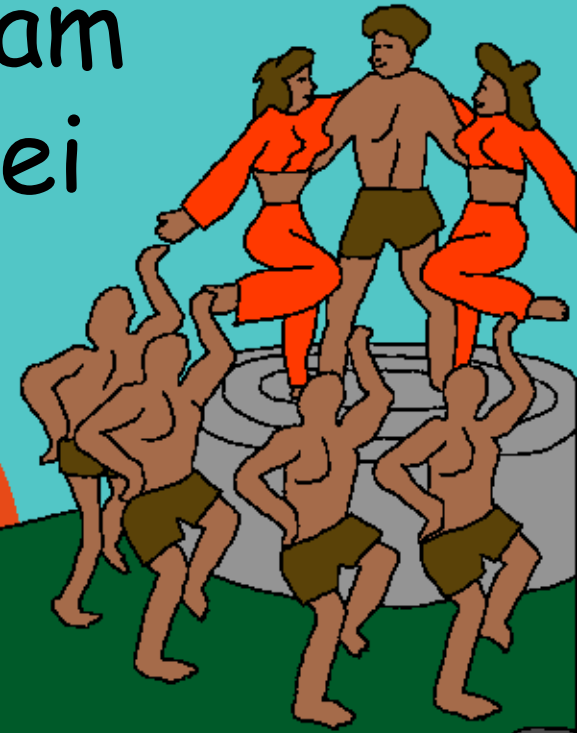




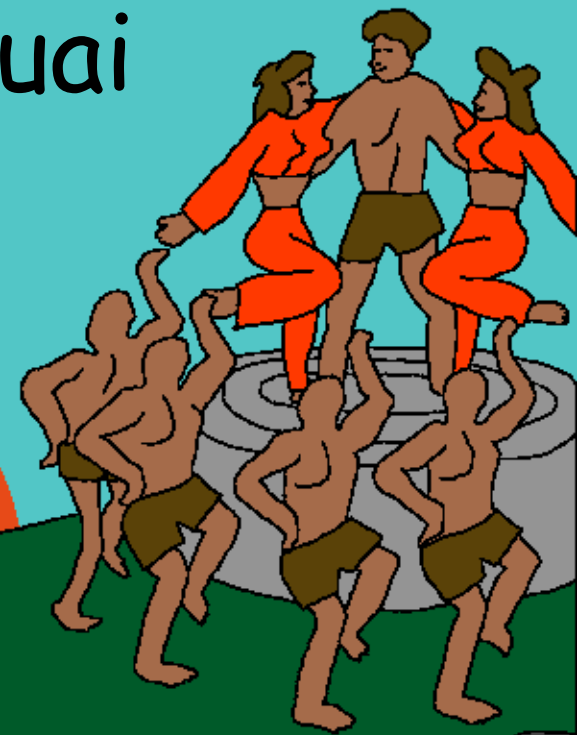
Kakik-kata nic  
aju nai lou du khuane.



Kanak guang pu khou  
mi kandi khou lung bam  
mei mansei guai na hei  
si khit khit  
thao the.



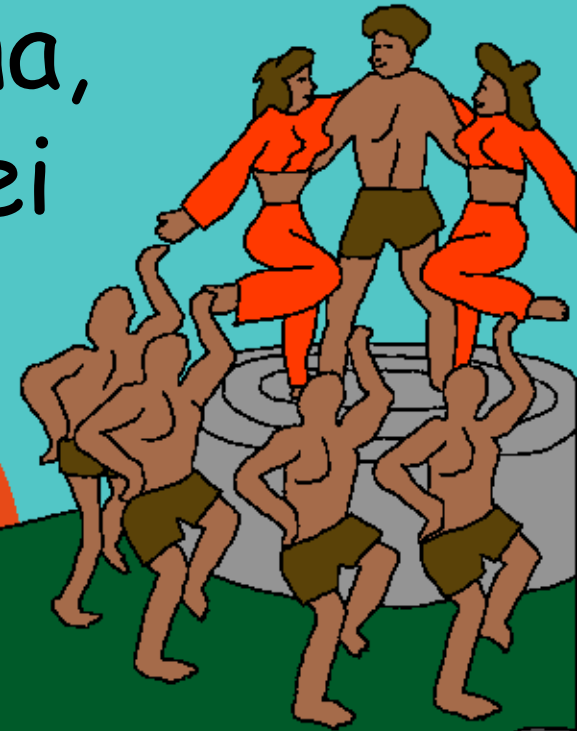
Hei kum tina Raguang rui  
nkham khou mansei guai  
na ta Ai rui su man  
ngam ni the  
tuna



kalung  
ding the  
khatnic ...



... Khouring-khouna khatnic  
nruai-thaoruai kata na,  
Mansei ta dam lou mei  
khang Raguang  
rui



kalung  
kabi  
the.



Tiki Seth na mpou kajan Noah  
kao mei pu tho Rachap tat  
na khan bam mak na  
lung bam khuane.



Kamei Raguang le tat  
ncham na bam mei pu e.



Kamei kana mpou kathum nic nai khuane. Kaniu ta Raguang lat piu khang kamei rui ncham lou na bam khuane.



Kumna, Raguang rui Noah ta  
kathan mei khatnic gailiang  
mei kadat dat mei  
thiak khou sin su  
khang kakhan  
the.





Mansei tuang Neila Kahou Mak Mei

Raguang tuang lat khou rui Pary,

Baibal/Bible khou rui phange

Thaureimei 3-6

"Nang lat akhou gut lou khou rui gaan  
mei ti lou e." Kalumlu 119:130



Luai Louc Mei



Mi Baibal pary rui charin mei Raguangc aniu ta dam  
lou mei pu lam din lou e khatnic kamei rui nang niu  
ta nic kalam ti thai ni na bam e.

Raguang thu aniu rui si mei taan taanc lou mei guai  
thai na bam e. Mi ta tei pap tuna kao e. Pap tuang  
taanphi thu thei mei di the tiki Raguang rui nbaan  
ta hei di kam njian lou na Kana Mpou khatna mei ta  
kros khou nang pap jang nang phaen thei lou khang  
ndiu kei lou the. Kamei thei lou na Ringthao dat na  
Tingkao tat kan the. Nang rui kakhou lum lou na  
nang pap guai kuak lou khang nei ethei, kamei rui  
guang lou na nang khou lung lou puni. Ntao tumei  
hei nang khang kagan di the Jisu ta la lou khang.  
Nang rui la lou na lum lou ethei, Kamei le Tingsaeng  
lung ncham puni the.



Nang rui la lou na lum lou ethei, Raguang khou huainei tho. Jianmei JISU, Nang hei Ringsuang mei Raguange tumei Ai lum the. Nang rui apap jang khang kandi khou mansei lun lui na guang na kros khou thei lou the. Kumna thei mei ta ngam lou na Ringthao dat kan the. Apanti khou nic guang lung lou pu o khatnic apap guai kuak lou pu o, hei kum ethei Ai nic kathan mei panti khou lung ngam khang; Ai ni nang thei lai ni e khatnic tingsaeng ringsuang mei panti lani e. Nang lat piu khang nkha lou o khatnic nang nac su khang jian lou o. Jisu jan khou AMEN.

Jahon 3:16 tei tingmik pum pana huainei na Raguang ta kachu o.

