

Alao guai khang Baibal
Kaipat ti Louc Mei



TINGKAO,
Raguang
tuang Hougai
Mei Kai



Himei: Edward Hughes

Kaba Dinv Louc Mei: Lazarus
Alastair Paterson

Kaluan Kasiamv Louc Mei: Sarah S.

Hanc Pat Louc Mei: Katasin Kamei

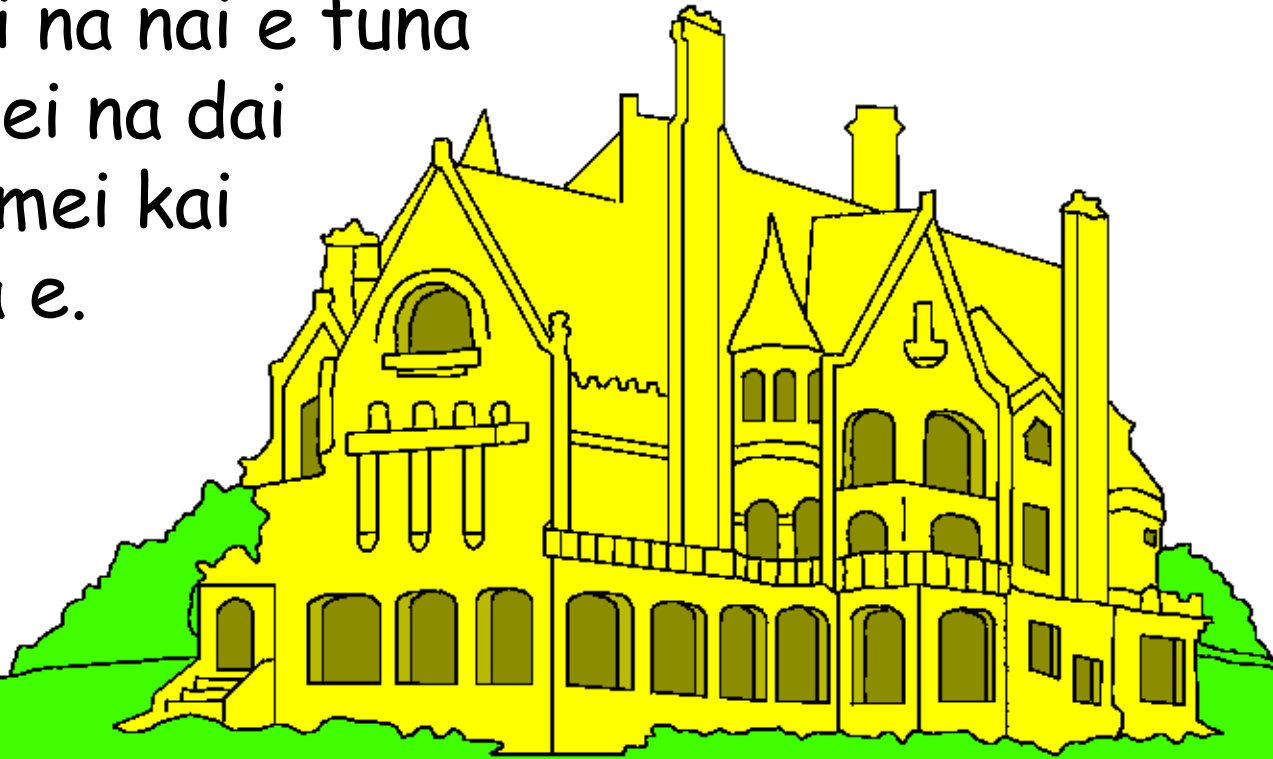
Liangpatc Louc Mei: Bible for Children
www.M1914.org

©2020 Bible for Children, Inc.

Nu Lou Mei: Nang rui juanv khang ham mak ge thei
nam pat dat lana sin su nu e.



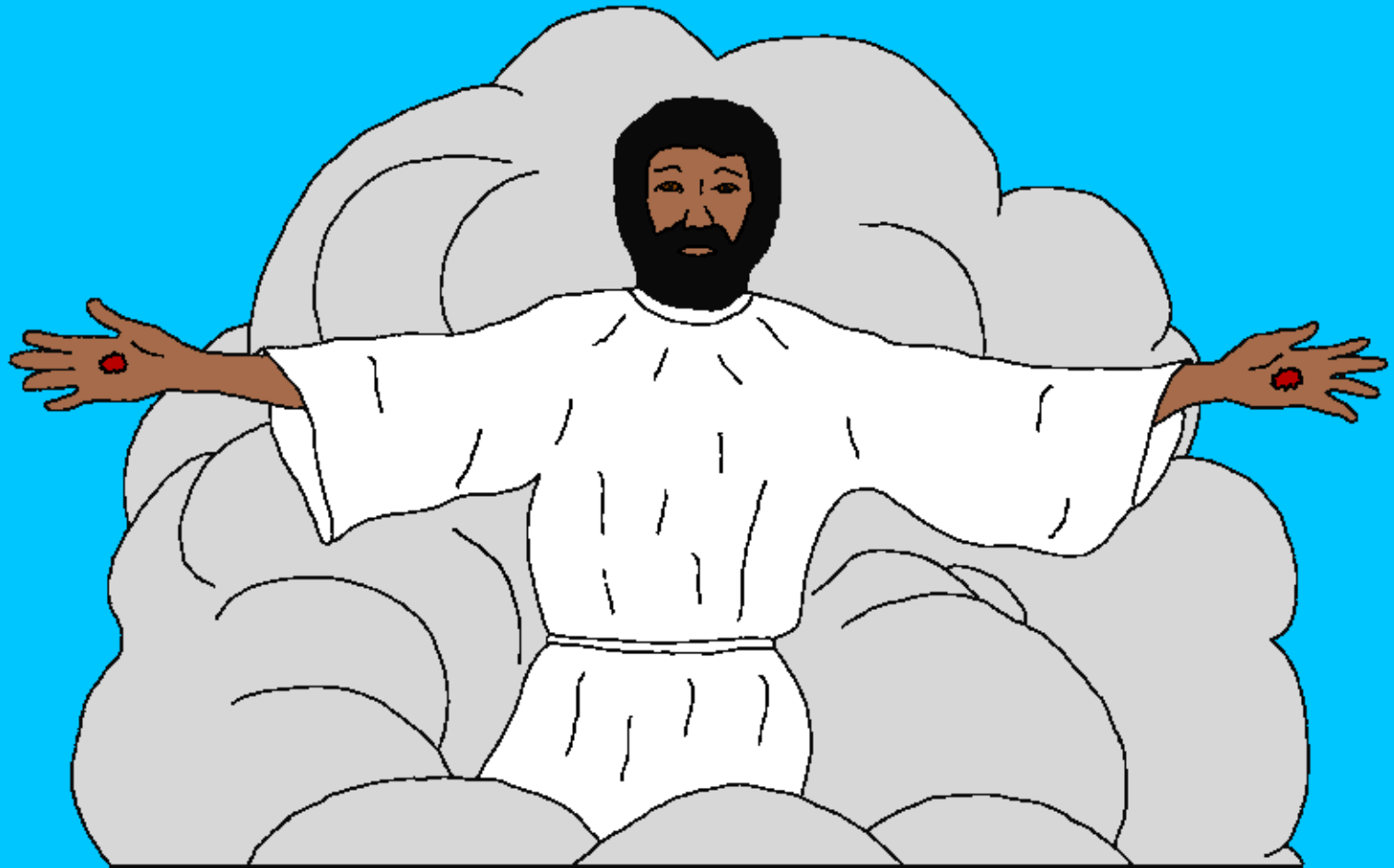
Jisu rui kandi khou lung bam mei gan khou kaziab
nun guai khou Tingkao Guangdi lam din lou khuane.
Jisu rui 'APU KAI' tuna kao khuane. Kumna apu
kai thang bam pei na nai e tuna
sa e. Mi kai tei pei na dai
e khatnic hougai mei kai
e tuna Jisu rui sa e.



Tingkao kandi tei mi kandi-mbaan khang
suang dai nic dai e, hou nic hougai e.



Ai aPu kai thang bam cham daan khang tat nic he, Ai rui tat lana bam cham daan luai ethei, Ai rui quang dat lana nang niu ta mi bam thang tei phung ku lou puni.



Kumna Ai bam pui bam khou tei nang niu nic bam
puni tuna Jisu rui sa the. Jisu thei mei khou rui
ring thao na Tingkao tat kan the. Kaziab nun rui jao
na bam khou, Jisu ta muang ru khou phung ku kan
the.



Mi khou tei rui thao na Khristian mei guai thu Jisu
Khrista khou lum mei guai ta la khang Jisu quang dat
puni tuna ning tou bam tu e. Thai mak
daek pui gan khou Ai quang dat
punni tuna Jisu rui kadi lou e.



**JISU LE LUNG
NCHAMV MEI**



Kum ethei Jisu Khrista quang mak mei hu khou
kakhou lum lou mei-Khristian mei guai kapanti tat re
thei akum puni cho? Baibal/Bible rui nthan
na din lou the. Jisu khou lum lou mei
guai tho panti tat rei ethei
Jisu le lung ncham khang
Tingkao tat the. Kumna
lum lou mei guai tho
thei ethei Jisu pam
njuan kan ni the.

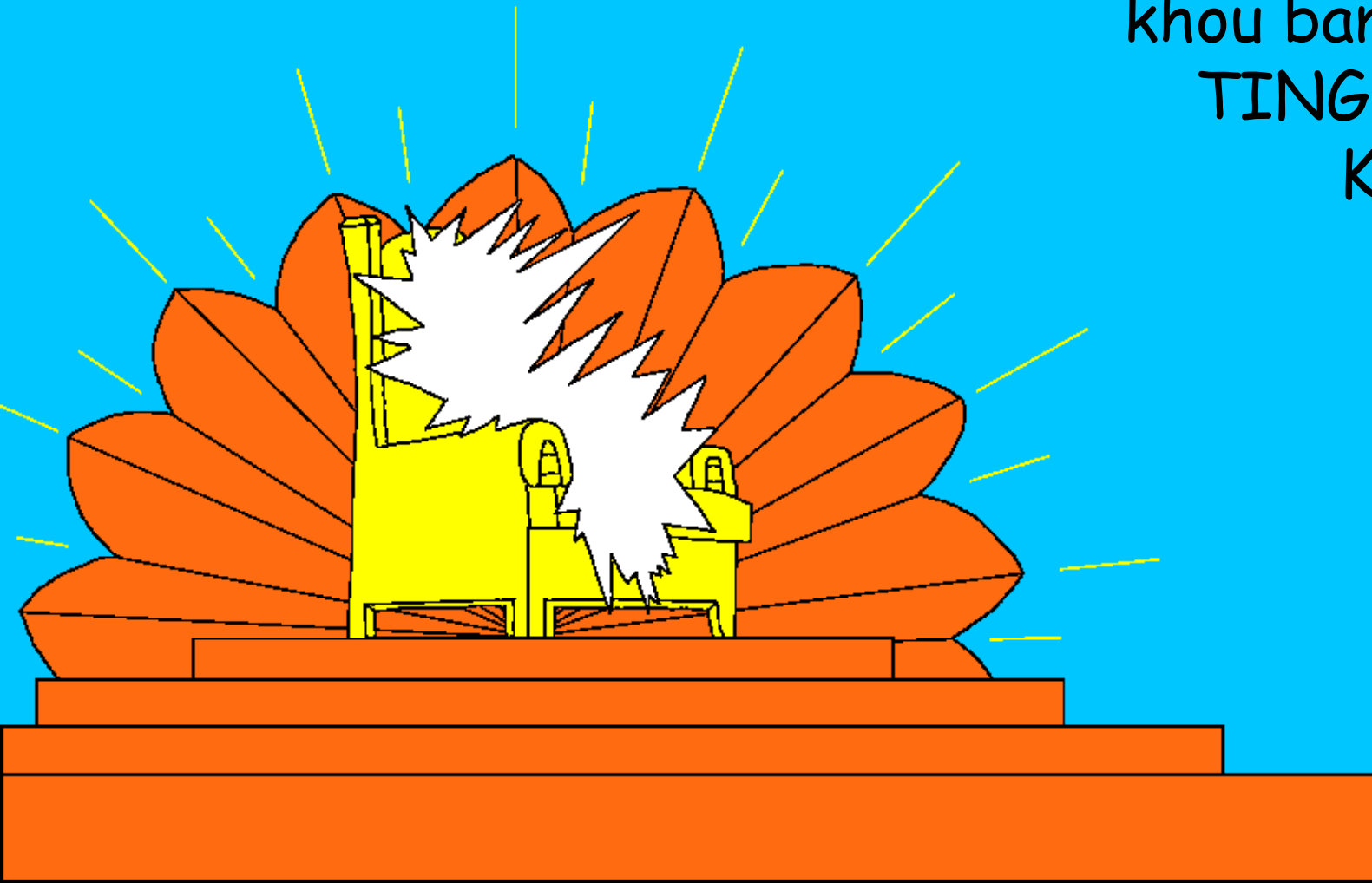


**JISU LE LUNG
NCHAMV MEI**



Nkham liang mei Baibal/Bible buk lang
NDAOLOUMEI khou Tingkao tho charin mei
kandi e tuna hi lou e. Nthuk liang mei tho Tingkao
hei Raguang Kai e. Raguang thu kabam kathui nac

khou bam de tiki
TINGKAO hei
KAKAI e.



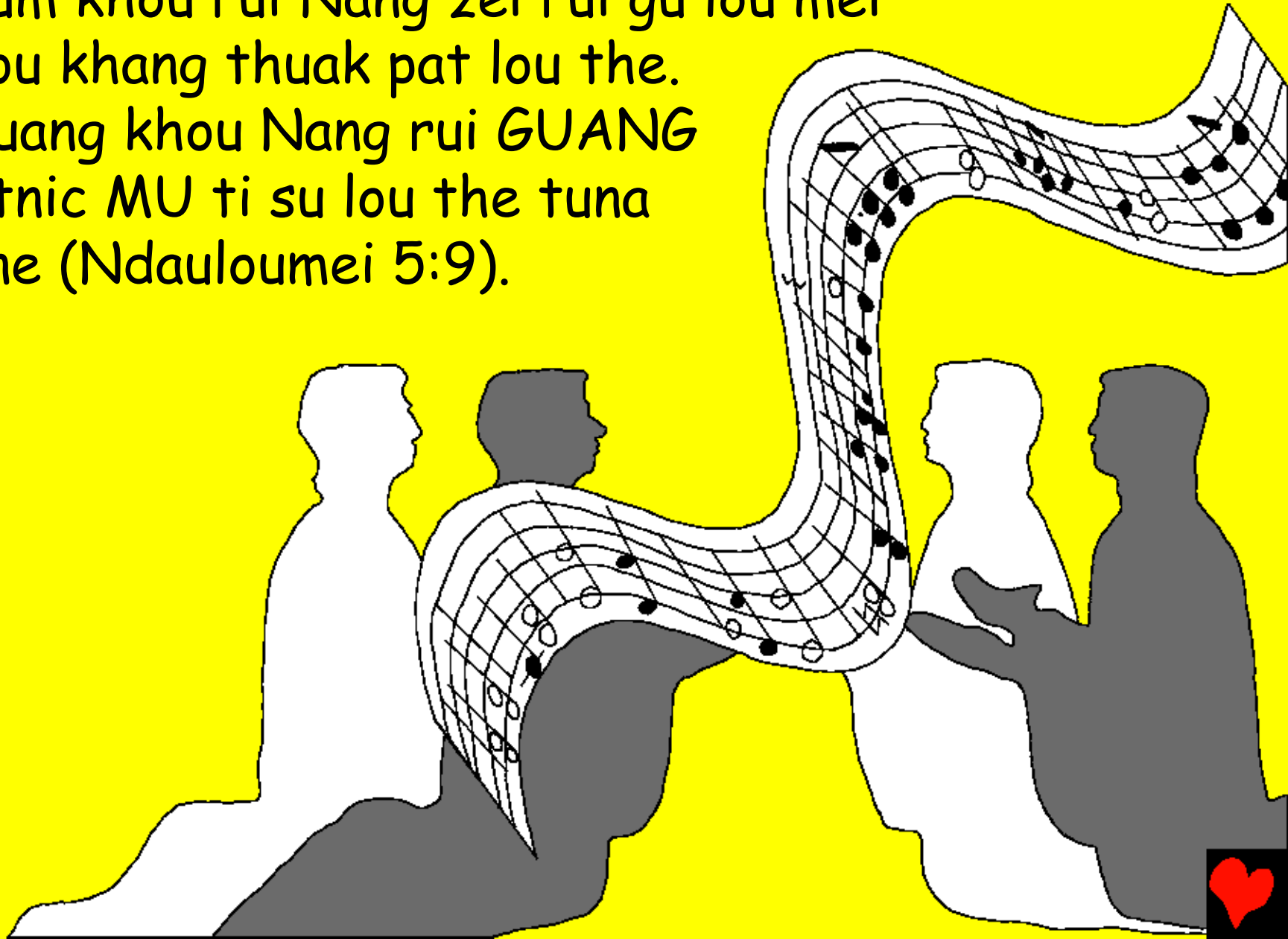
Mi Tingkao khou tei Baanchra
guai rui Raguang ta kalum bam
khuane. Khou tei Raguang mei
guai nic, Jisu khou lum lou na
thei kan mei guai nic kaniu
lu-than suan na Raguang ta
thuan bam
khuane.



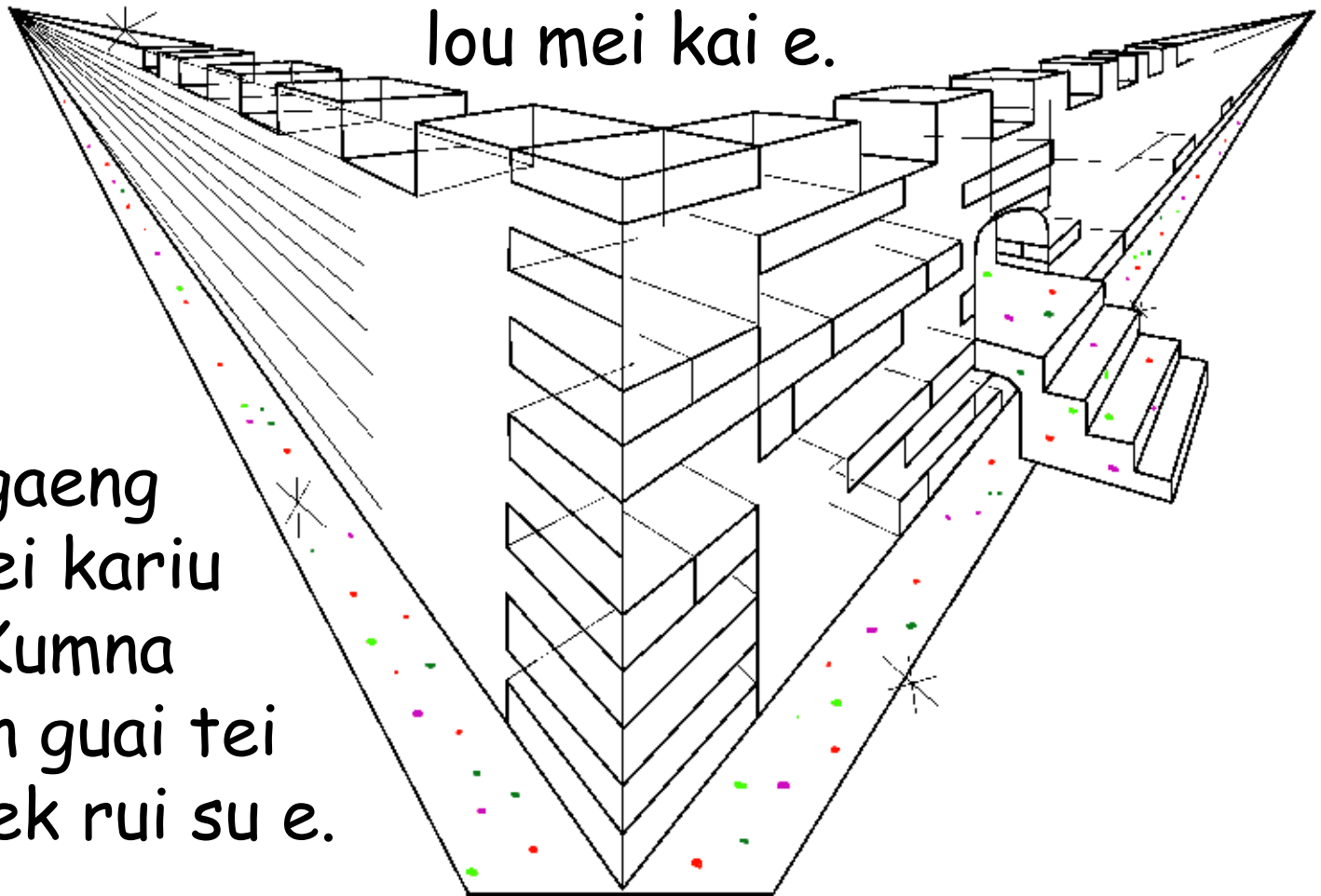
Jisu khou lum mei nun nic
thei mak na bam khou Jisu
guang ethei, thei dat mak na
guatli na muang ru khou Jisu
ta ariu puni. Kumna Tingkao
khou tei lum lou mei nun nic
tingsang lung
khang gut
puni.



Lu- khat, Nang hei biu mei e, kalam thu jaat
kapum khou rui Nang ze i rui gu lou mei
la tou khang thuak pat lou the.
Raguang khou Nang rui **GUANG**
khatnic MU ti su lou the tuna
suane (Ndauloumei 5:9).



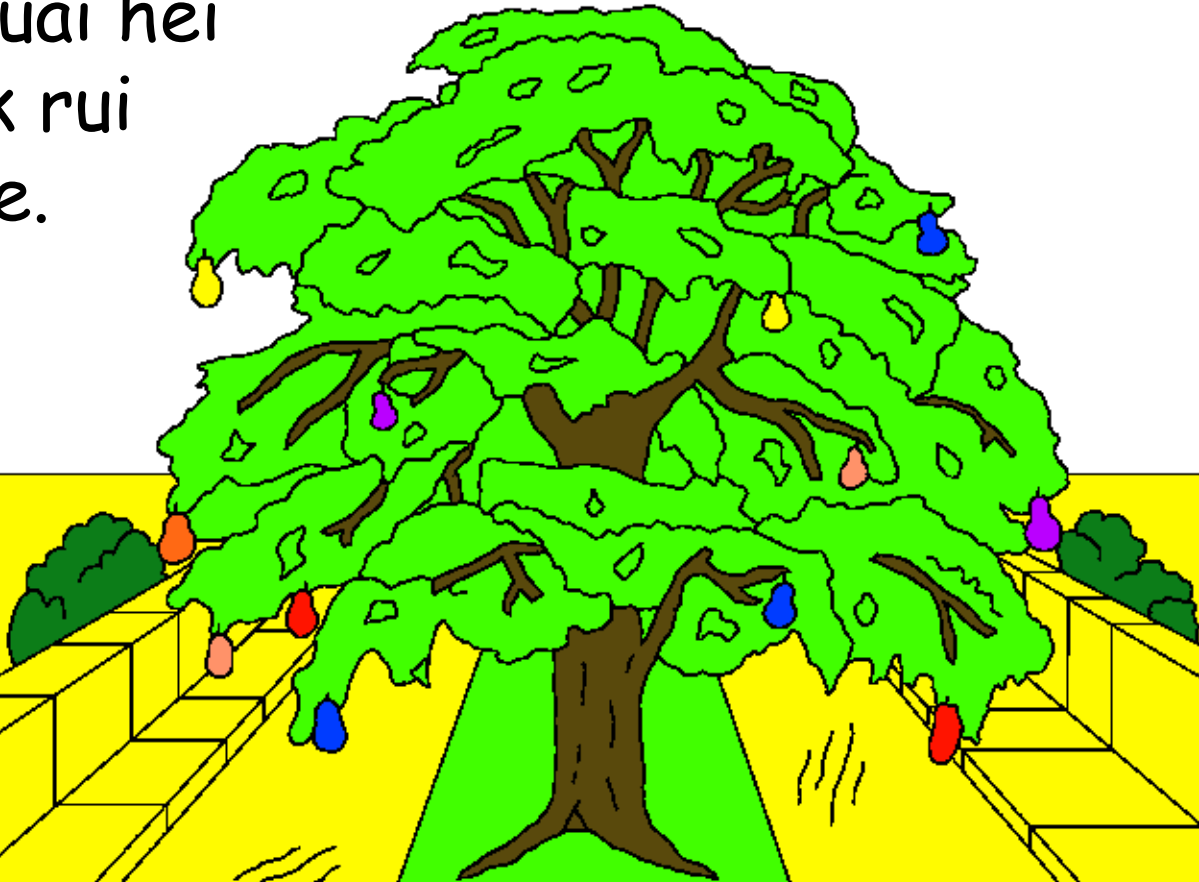
Nkham liang mei Baibal/Bible kalang khou
'TINGKAO' ta Kathan mei JERUSALEM tuna nic
kao e. Mi tei pei na dai e khatnic kaov e. Khou tei
haeng jin mei, haeng rim mei khatnic kachan mei tao
pei na nai e. Kachak le tao kariu pat mei rui kasiam
lou mei kai e.



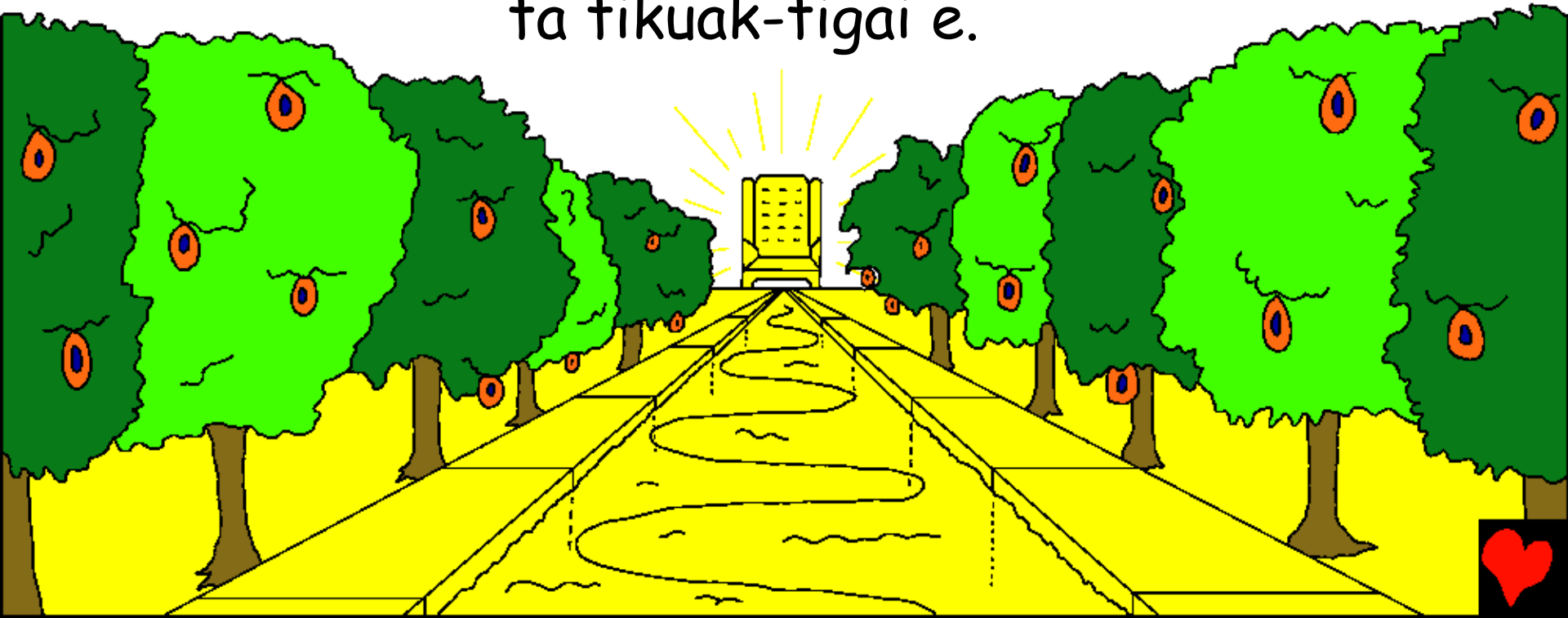
Damngaeng
guai tei kariu
ti e. Kumna
kaimun guai tei
kachaek rui su e.



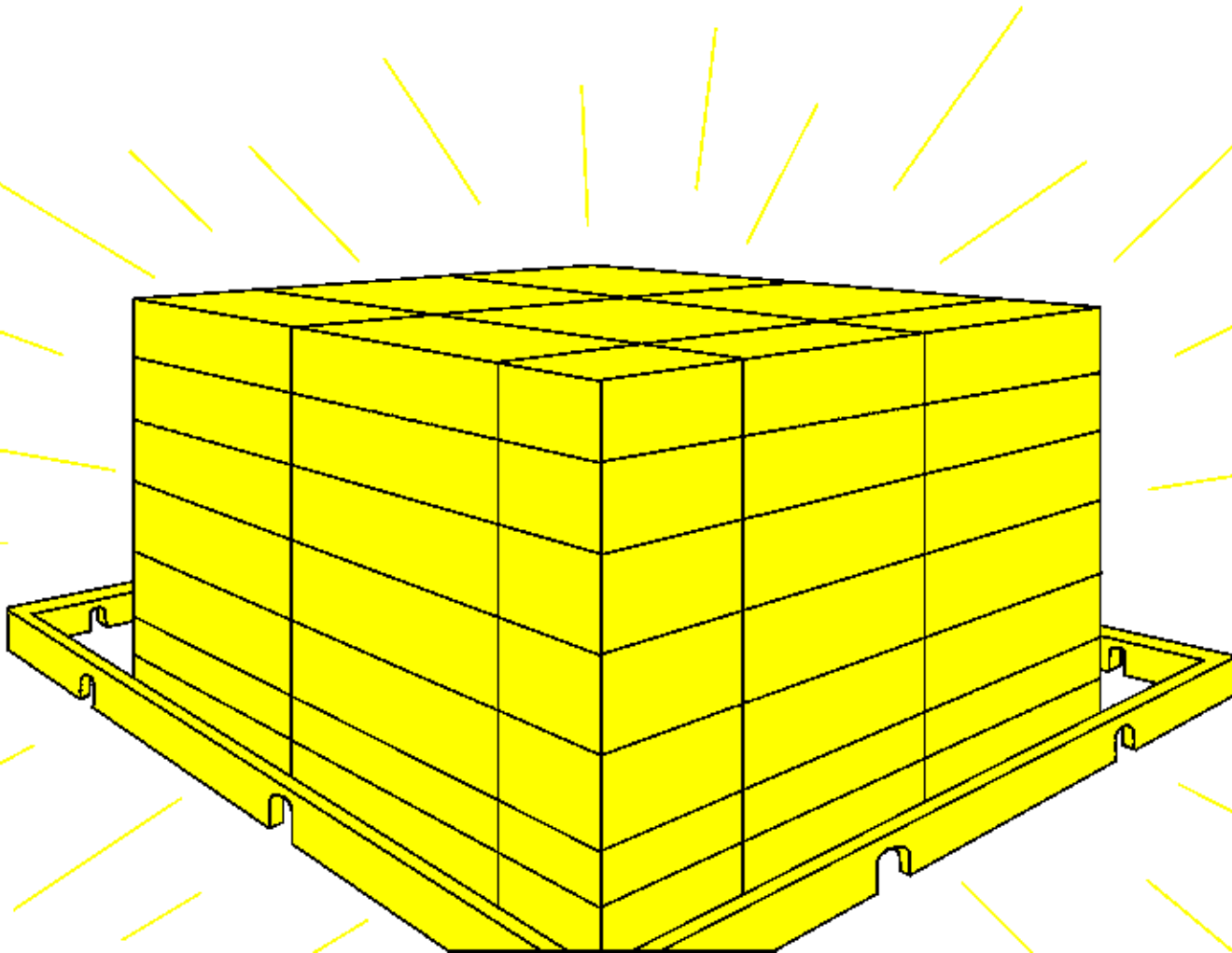
Hei khou tei kachaek rui kasiam mei raengmun tabui
nung na sinic bang dat jat lak khe. Thang tei aniu
nic tat di kho... WoW! Tingkao hei kalung thang gai
ran e. Mi Tingkao-Kathan mei Jerusalem kai khatnic
chang guai hei
kachaek rui
kasiam e.



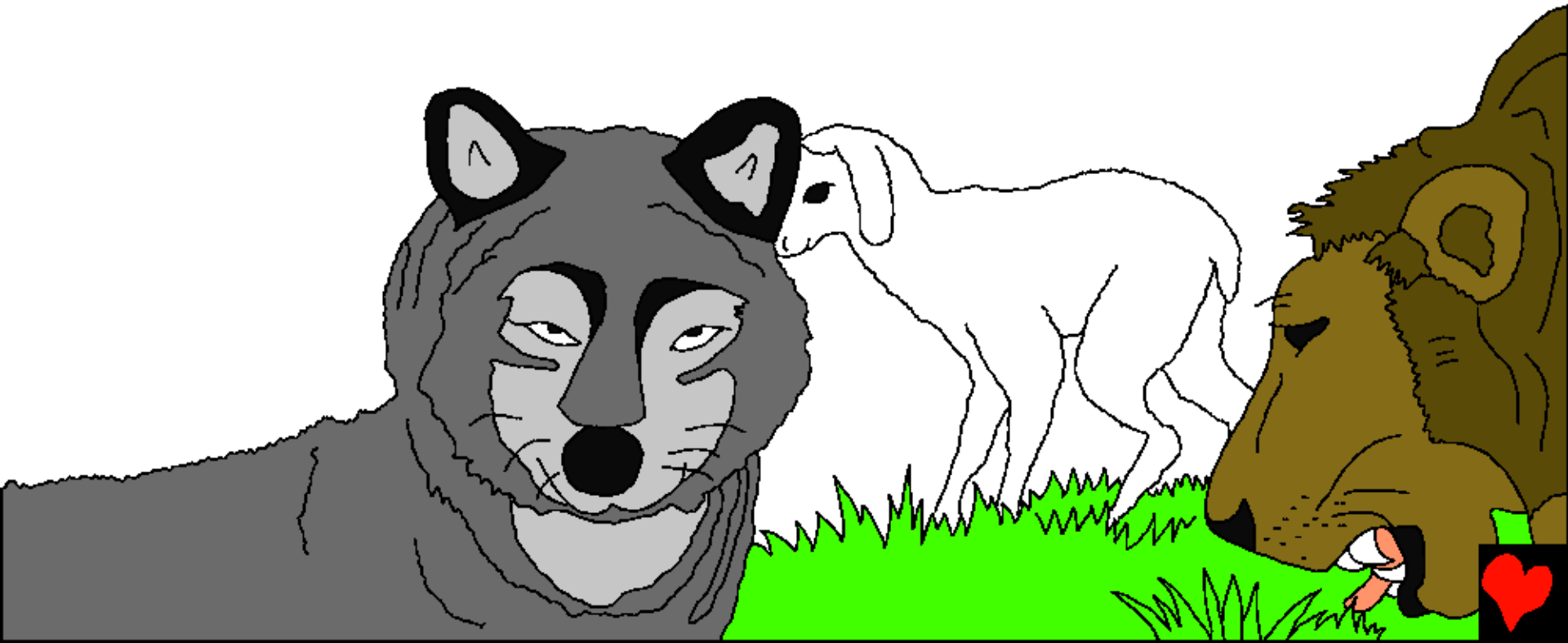
Khou tei nthan mei Ringmei dui Raguang Bampaeng
khou rui luang pat khuane. Kumna dubaek khat biak
thang tei Ringmei Thingbang thao khuane. Mi tei
thaurei khou Eden Pikuan khou nai mei thingbang tei
e. Mi thingbang tei kadat khat-khat mei thingbange.
Kathai kajat runa kanei thai e. Bu pum kathai bai-bai
na thai khuane. Kumna kanui tei sunuv-naonian mei
ta tikuak-tigai e.



Mi Tingkao Kaidai khou tei Bu, Nei, Gaanchuangna
kariu kage mak khe. Raguang tuang Him, Laojiu na
rui kariu padik puni. Khou tei zingbang nic mak khe.



Tingkao thang tho khouring-khoua guai nic bai ngam the. Mansei ta duangda su puni the. Alai le Laojiu phuai tu kariu puni the, Kamamgliangpui nic guaiv kum naggou tu puni the. Nthan mei Zion luangbut khou kabiu-kabang mei nai dat lak khe tuna Raguang rui sa e.



Aniu rui jao siang na kathai jao puki TINGKAO
kandi khou ramv gaatmei, nai tang mak mei nai e.
Nang thai bu cho? Mi
kiu thu Tingkao
kandi khou
Lungpuam
mei mak
khe.



Agai-agi mei nic mak khe, lungning si mei nic mak
khe, kaikham ni taan/bang dat mak khe kalam thu
Tingkao khou kaihou

mei makge. Lat
saraam mei,
meidou mei,
duai-rang
sin mei
khatnic
mei gai
mak mei
mak khe.
Khou tei
pap tu mei
mak khe.

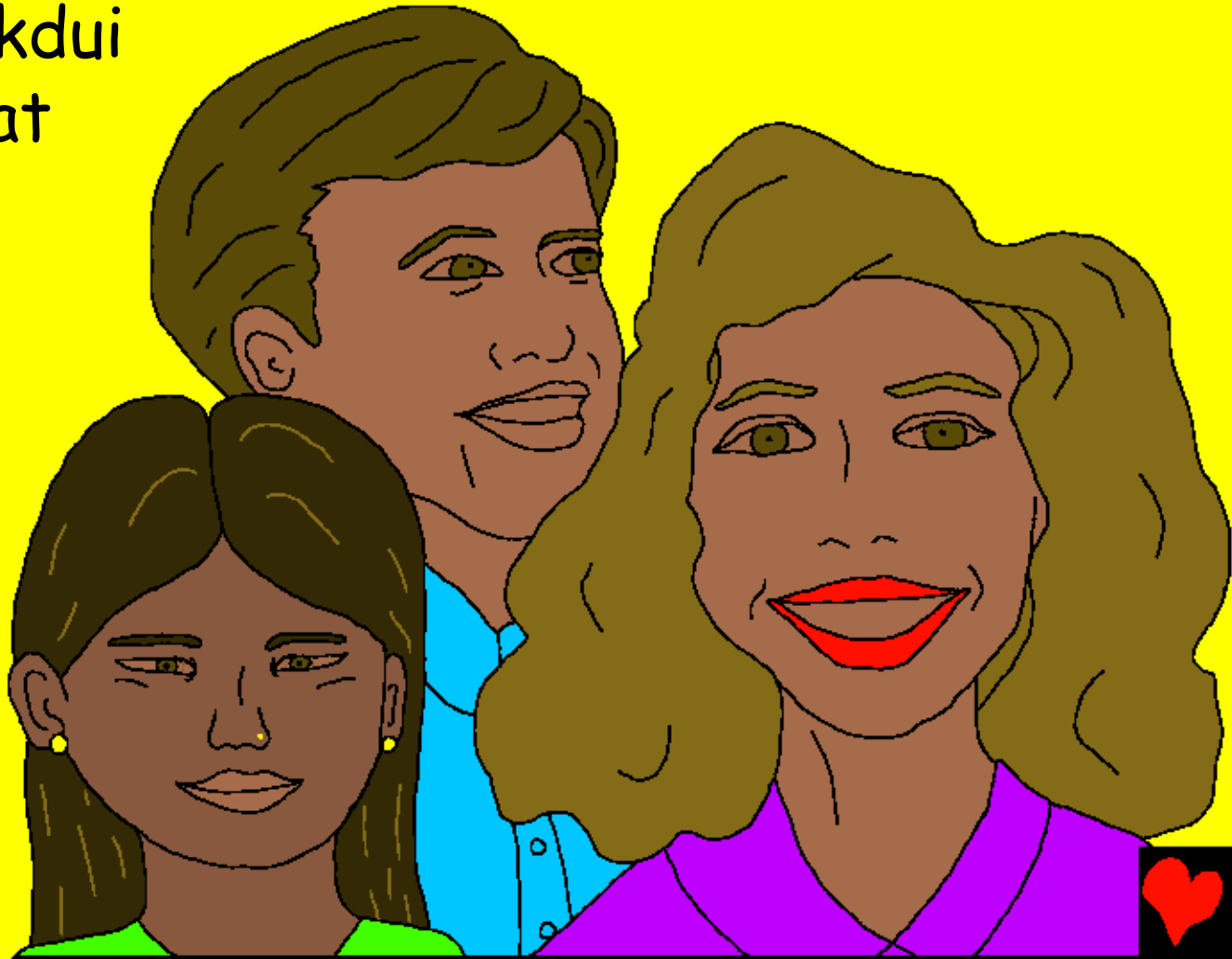




Tingkao khou thu mikdui
kei mei nic nai dat lak khe.
Kadak-kadak, Raguang nac
nun, kakhou lum lou mei
guai kandi khou tho
lungning rianra na kap be
tiki Tingkao thang thu kap
mei nai dat lak khe.
Raguang rui mikdui guai
thut phui lou puni.



THEIMEI tumei Tingkao thang mak khe. Raguang
nac nun-Jisu khou lum lou mei guai na tei Tingsang
jang Raguang le lung ncham puni the. Rianra mei,
kapmei, sunu mei nic mak
khe. Chunsi-mikdui
kei mei ni nai dat
mak khe. Khou
tei Tingsang
jang Raguang
le neila na
lung ncham
bam puni.



Gailiang mei, neila liang mei kiu thu hei e. Tingkao
khou thu karapou-karapei nai dat mak khe. Mansei
kaguai na n-gaan, tunac chabuan kum ngam puni.
Mi tei tuna gay mei, n-gan gay mei nang
niu Jisu Khrista ta nang Raguangc,
nang Kaipou, Guloumei pu the
tuna lum lou na kalat
piu bam mei
guai khange.



Tingkao khou 'LAOJIU LAONA TUANG RINGMEI LATRIK BUK' tuna nai e. Mi khou tei jan pei na hi lou e. Mi khou tei thou thou jan cho tumei nang thai de cho? Khou tei Jisu Khrista ta katuang gulou mei pu ka Raguang the tuna lum lou mei guai jan na khang de. Nang jan nic nai tu ni jao lou o. Mak di na cho? Tabui suna mak bam tu cho? Nang nic Tingsang jang ring nic mak na cho?



Nang nic tingsang jang rianra thei mei khou gut ni
mak ge thei, quang tho tuna nang ta kao na bam the.
Nkham mei Baibal/Bible lat khou BUMANG khatnic
NOUPOU rui 'quang tho' tuna sa e.



Chu mei kathui rui quang kan diu, tari mei kathui rui
quang kan diu khatnic kahao mei kathui rui quang
kan diu. Kumna Ringmei dui tei nsa na quang la tho.



TINGKAO, Raguang tuang Hougai Mei Kai

Raguang tuang lat khou rui Pary,

Baibal/Bible khou rui phange

Jahon 14; 2 Korinthia 5;
Ndauloumei 4, 21, 22

"Nang lat akhou gut lou khou rui gaan
mei ti lou e." Kalumlu 119:130



Luai Louc Mei



Mi Baibal pary rui charin mei Raguangc aniu ta dam lou mei pu lam din lou e khatnic kamei rui nang niu ta nic kalam ti thai ni na bam e.

Ruang thu aniu rui si mei taan taanc lou mei guai thai na bam e. Mi ta tei pap tuna kao e. Pap tuang taanphi thu thei mei di the tiki Ruang rui nbaan ta hei di kam njian lou na Kana Mpou khatna mei ta kros khou nang pap jang nang phaen thei lou khang ndiu kei lou the. Kamei thei lou na Ringthao dat na Tingkao tat kan the. Nang rui kakhou lum lou na nang pap guai kuak lou khang nei ethei, kamei rui guang lou na nang khou lung lou puni. Ntao tumei hei nang khang kagan di the Jisu ta la lou khang. Nang rui la lou na lum lou ethei, Kamei le Tingsaeng lung ncham puni the.

Nang rui la lou na lum lou ethei, Ruang khou huainei tho. Jianmei JISU, Nang hei Ringsuang mei Raguange tumei Ai lum the. Nang rui apap jang khang kandi khou mansei lun lui na guang na kros khou thei lou the. Kumna thei mei ta ngam lou na Ringthao dat kan the. Apanti khou nic guang lung lou pu o khatnic apap guai kuak lou pu o, hei kum ethei Ai nic kathan mei panti khou lung ngam khang; Ai ni nang thei lai ni e khatnic tingsaeng ringsuang mei panti lani e. Nang lat piu khang nkha lou o khatnic nang nac su khang jian lou o. Jisu jan khou AMEN.

Jahon 3:16 tei tingmik pum pana huainei na Ruang ta kachu o.

