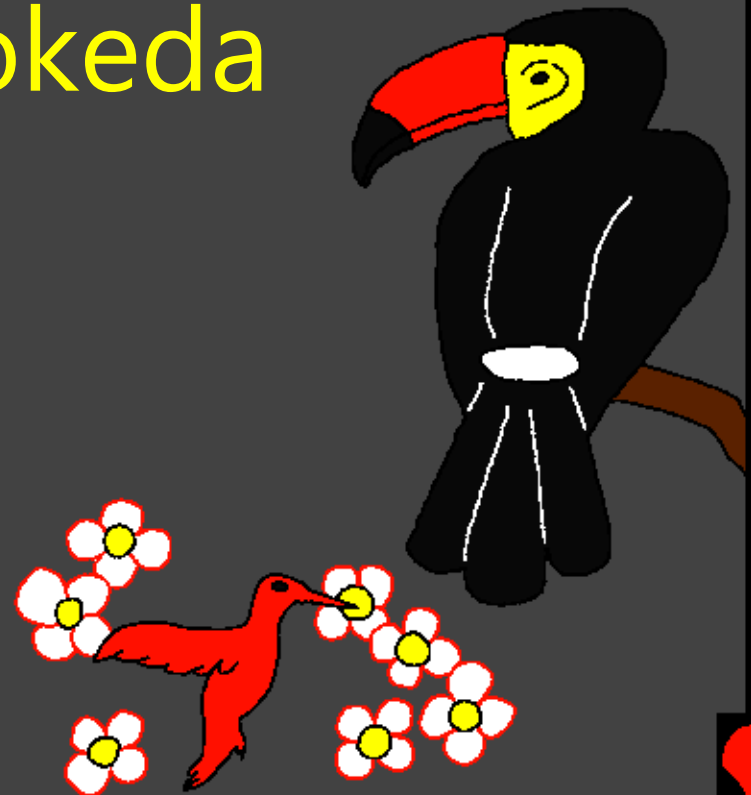


Gidra@ko la@git^ Baibel  
Sasapr@aocic^

Tinre Isor do  
jotowak^e benaokeda



Olok<sup>^</sup> ic<sup>^</sup>: Edward Hughes

Phen kathako hudisic<sup>^</sup>: Byron Unger; Lazarus;  
Alastair Paterson

Atan\$ic<sup>^</sup>: Bob Davies; Tammy S.

Torjomayic<sup>^</sup>: Samuel Hasda

Chapa od@ok: Bible for Children  
[www.M1914.org](http://www.M1914.org)

©2020 Bible for Children, Inc.

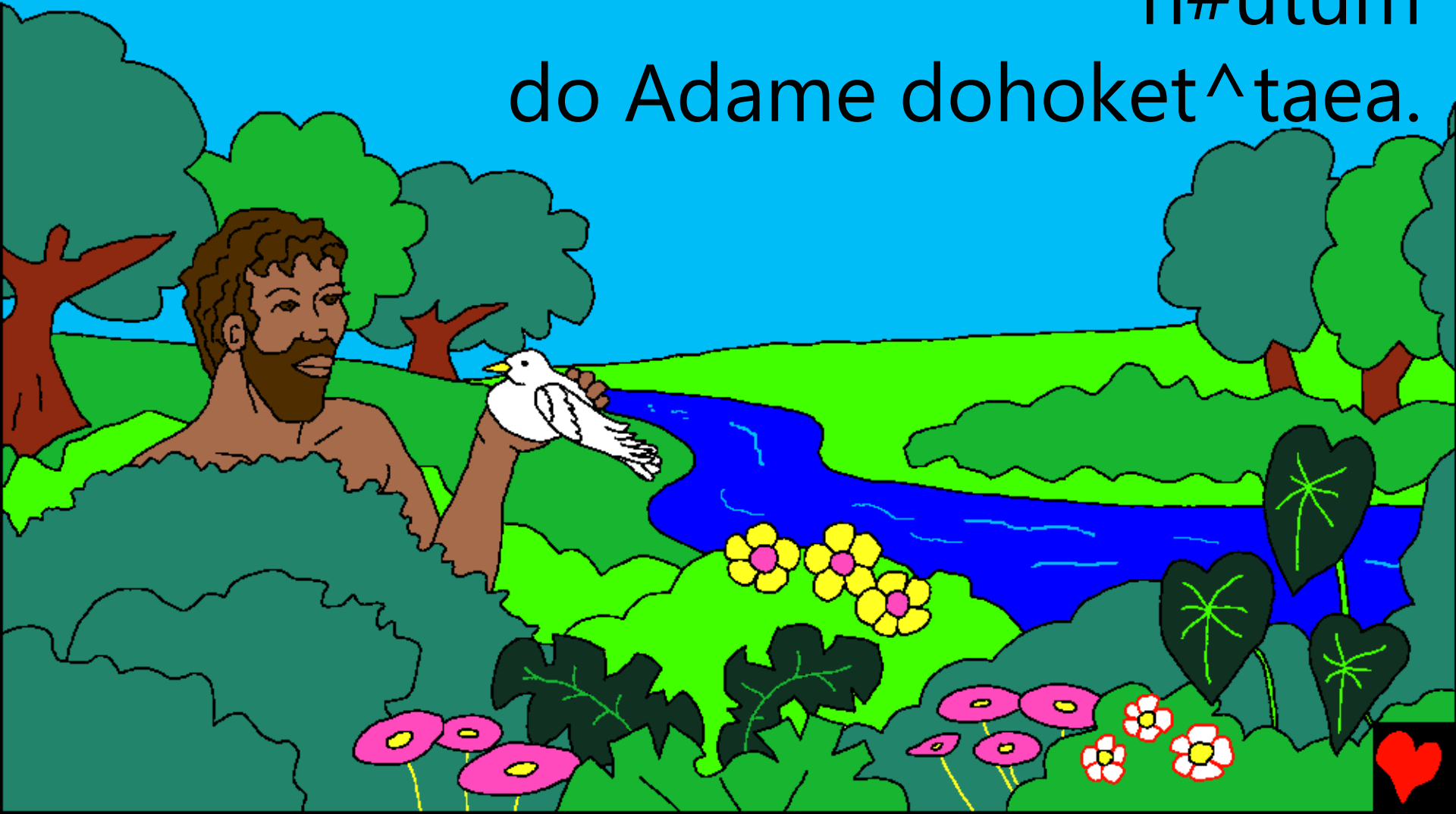
License: Noa golpo do copy arem print dar@eak<sup>^</sup>a,  
menkhan a@khrin# do bam a@khrin# dar@eak<sup>^</sup>a.



Abo do okoeye sirja@uket^ bona?  
Baibelre Isorak^ kathae, la@i abon  
kana cet^lekate manwa  
do san\$gek^ko  
ehop^ena.



A@d@i Sedaere Isor do pa@hil  
manwae benaokedea ar uniak^  
n#utum  
do Adame dohoket^taea.



Isor do dha@rti reak^ dhur@i khon  
Adame sirja@ukedea. Ar Isor do tinre

Adam

sahet^e aderadea unre uni

do

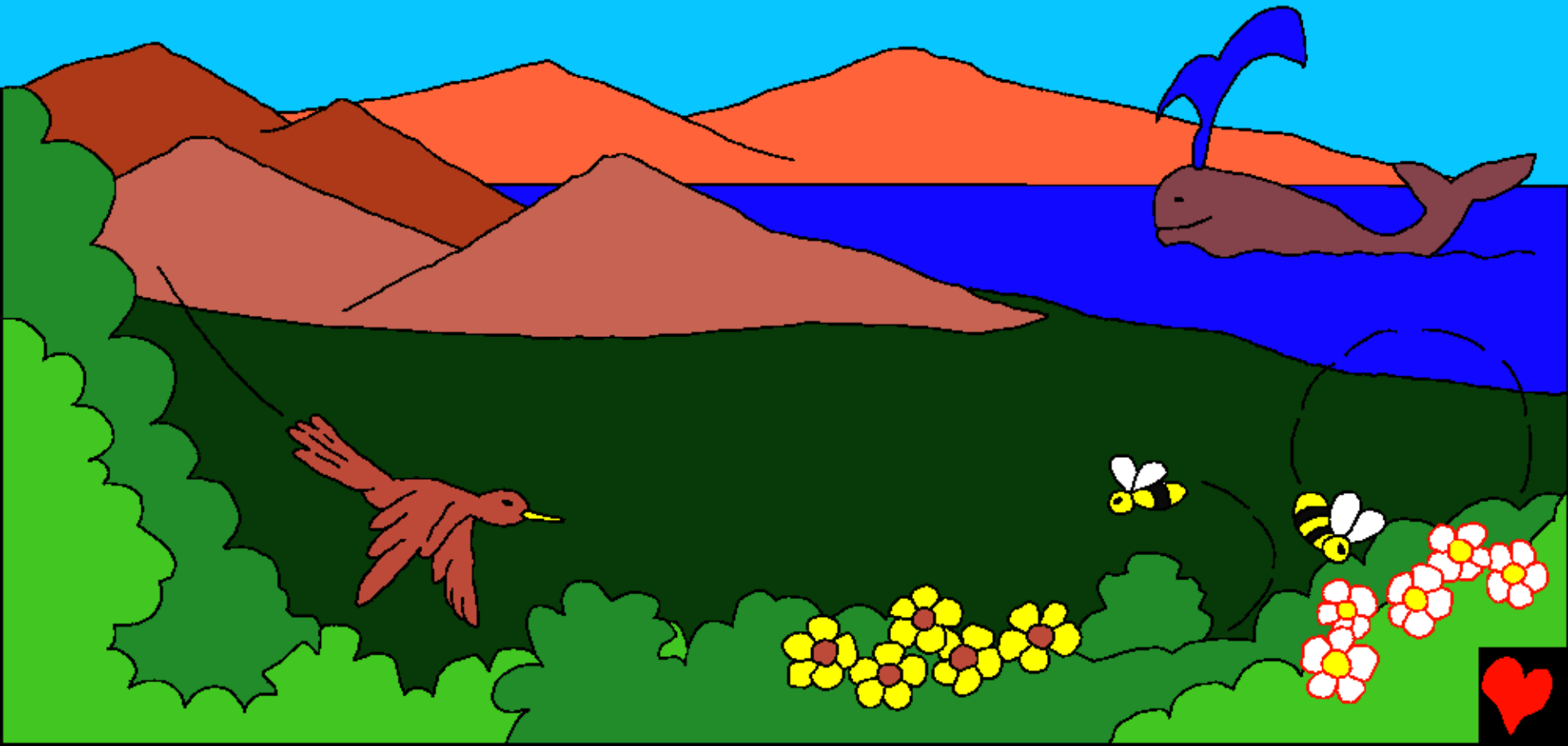
jiwiye n#amkeda.



Uni do Edenko metak^ mit^t@en  
mon#j  
bagwanre apnartet^e n#elena.



Adam a@uriye sirja@uere Isor do  
mon#j okoc^ dha@rtiye benaokeda ar  
napae napae jiniskoteye perec^keda.



Isor do dhape dhapete buruko,  
hahan\$kar jaegako, mon#j so bahako,  
usul dareko, nana ron\$an ce~r@e~ko,  
bhan bhanok^kan dumurko, losot^re  
ga@d@ia@u bar@aekan timiko

ar t@und@a@n\$

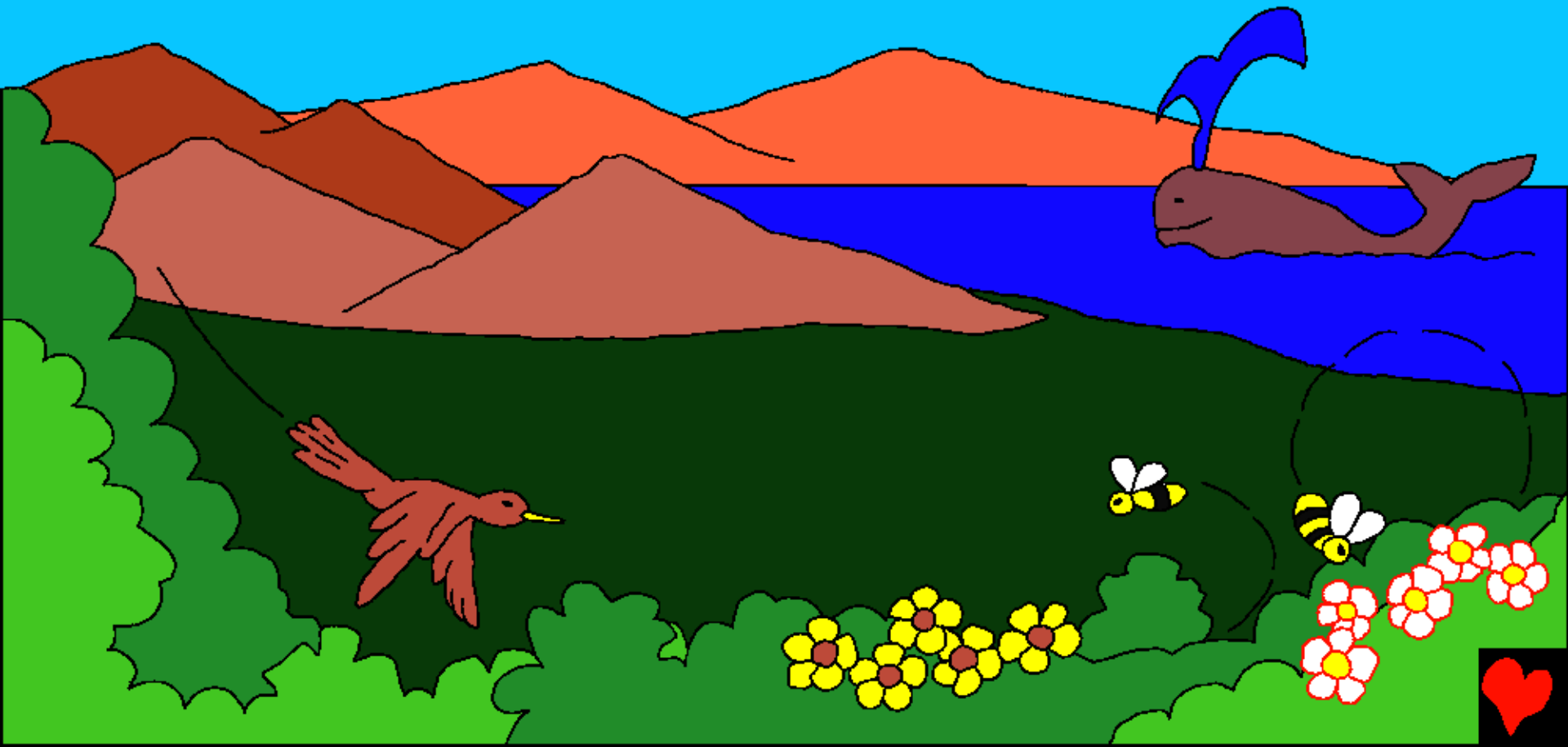
bar@aekan gon\$ghakoe

sirja@uket^koa

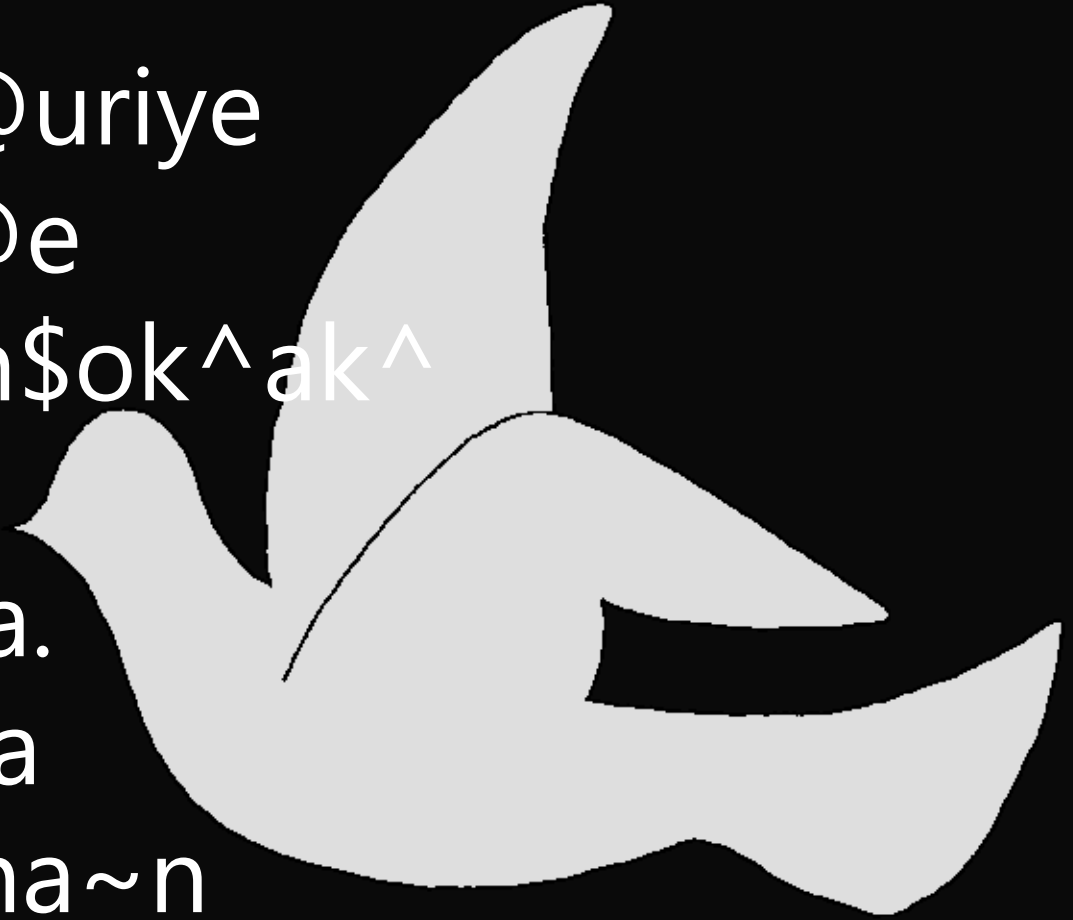




Asokaete Isor do sanamak^e  
sirja@ukeda ar ond@e do –  
sanamak^koge.



Etohop^re, Isor  
ja~ha~nak^ a@uriye  
sirja@ure ond@e  
Isor t@hen atan\$ok^ak^  
do ar cet^ge  
ban\$ tahe~kana.  
Ja~ha~e manwa  
se jaega se ja~ha~n  
jinisko ho~ ban\$  
tahe~kana. Ond@e do  
cet^ge ban\$ tahe~kana.

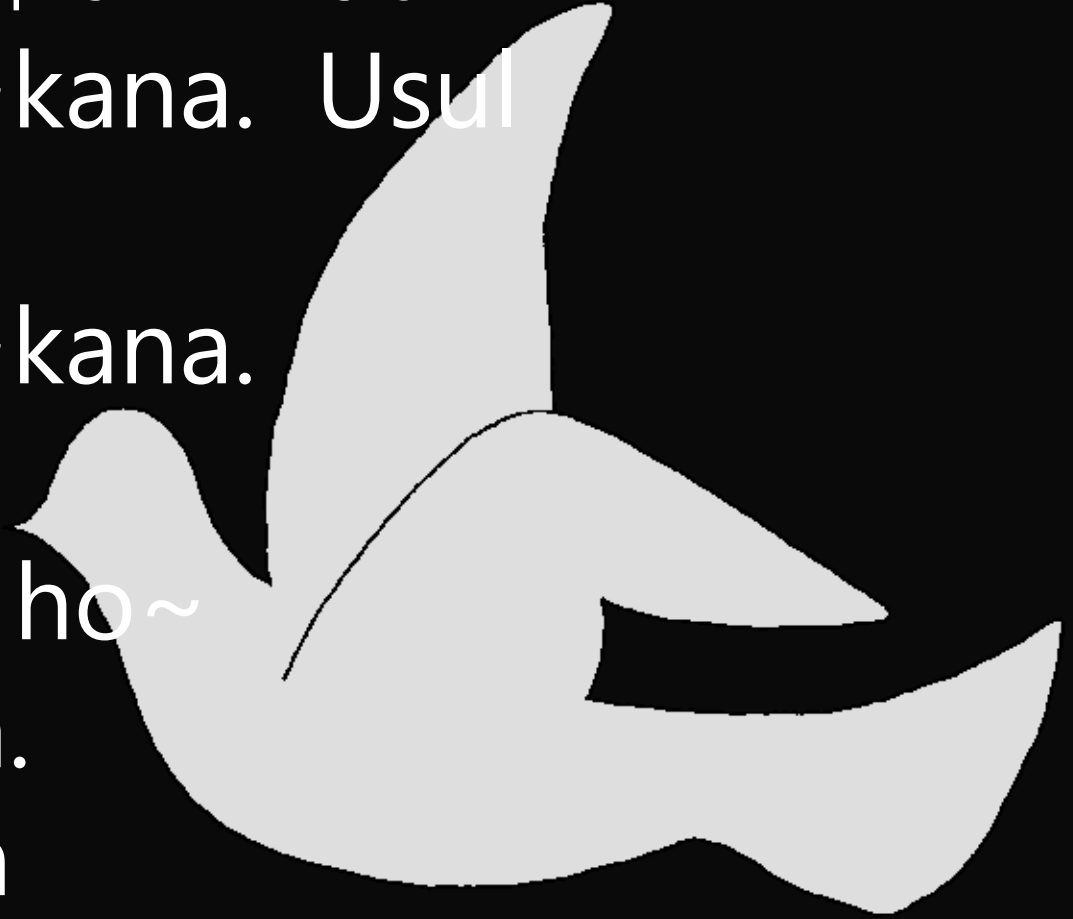


Marsal ho~ ban\$ ar n#ut  
ho~ ban\$ tahe~kana. Usul  
ar copot^  
ho~ ban\$ tahe~kana.

Ond@e  
do hola ar gapa ho~  
ban\$ tahe~kana.

Ond@e do eken  
Isorgeye  
tahe~kana, one

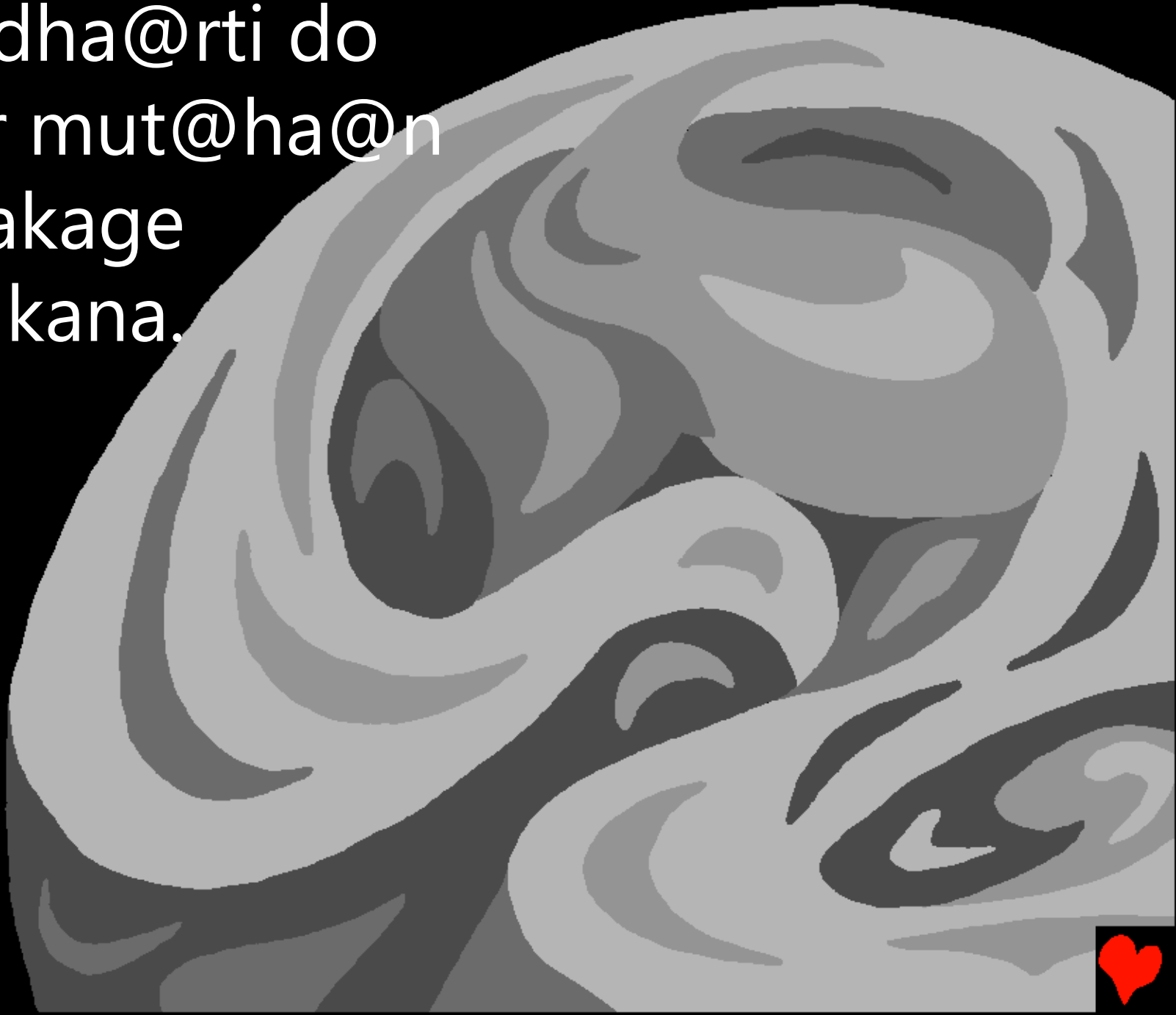
uniak^ do etohop^ ho~



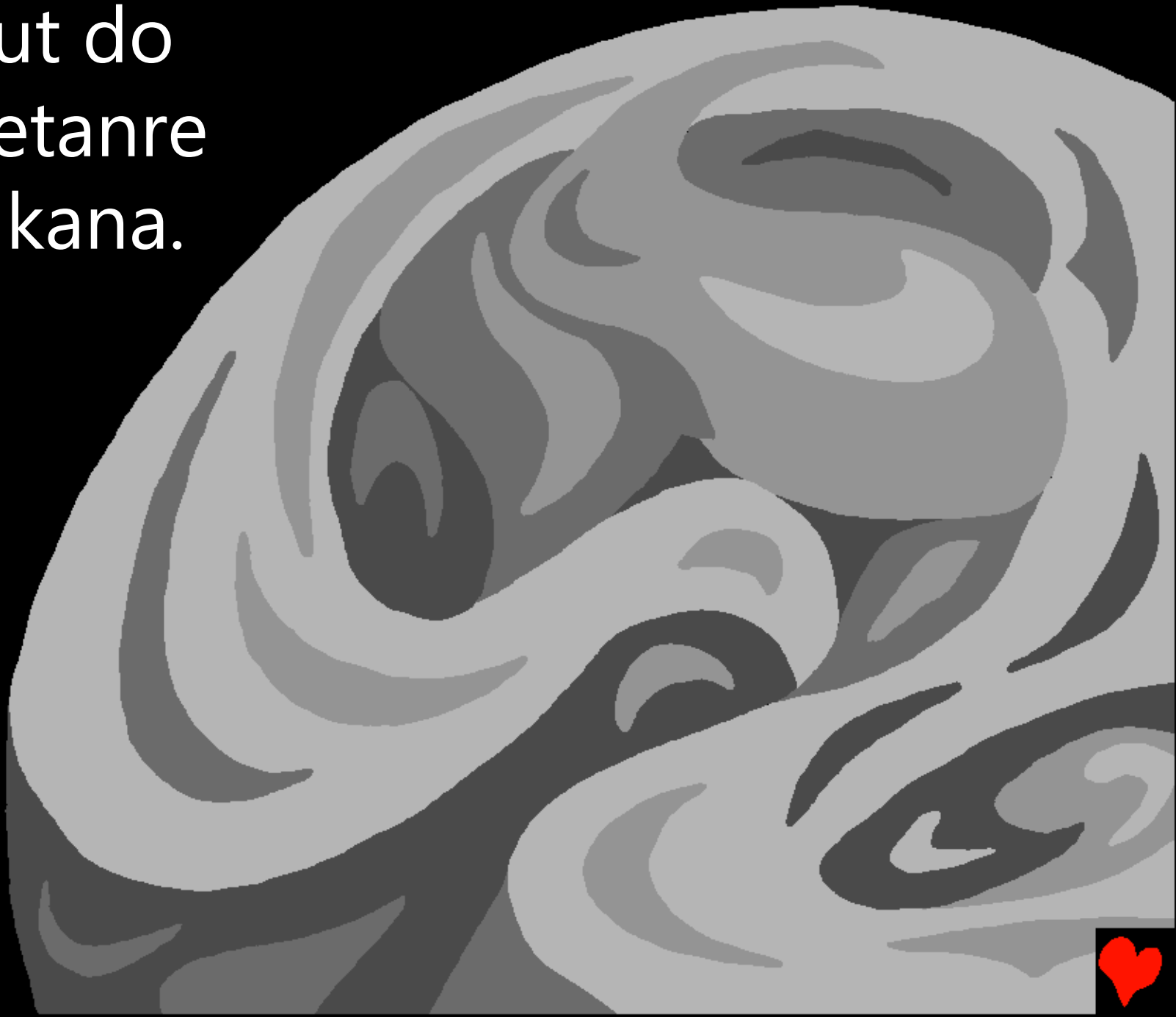
Etohop^re Isor do ot ar  
sermae sirja@ukeda.



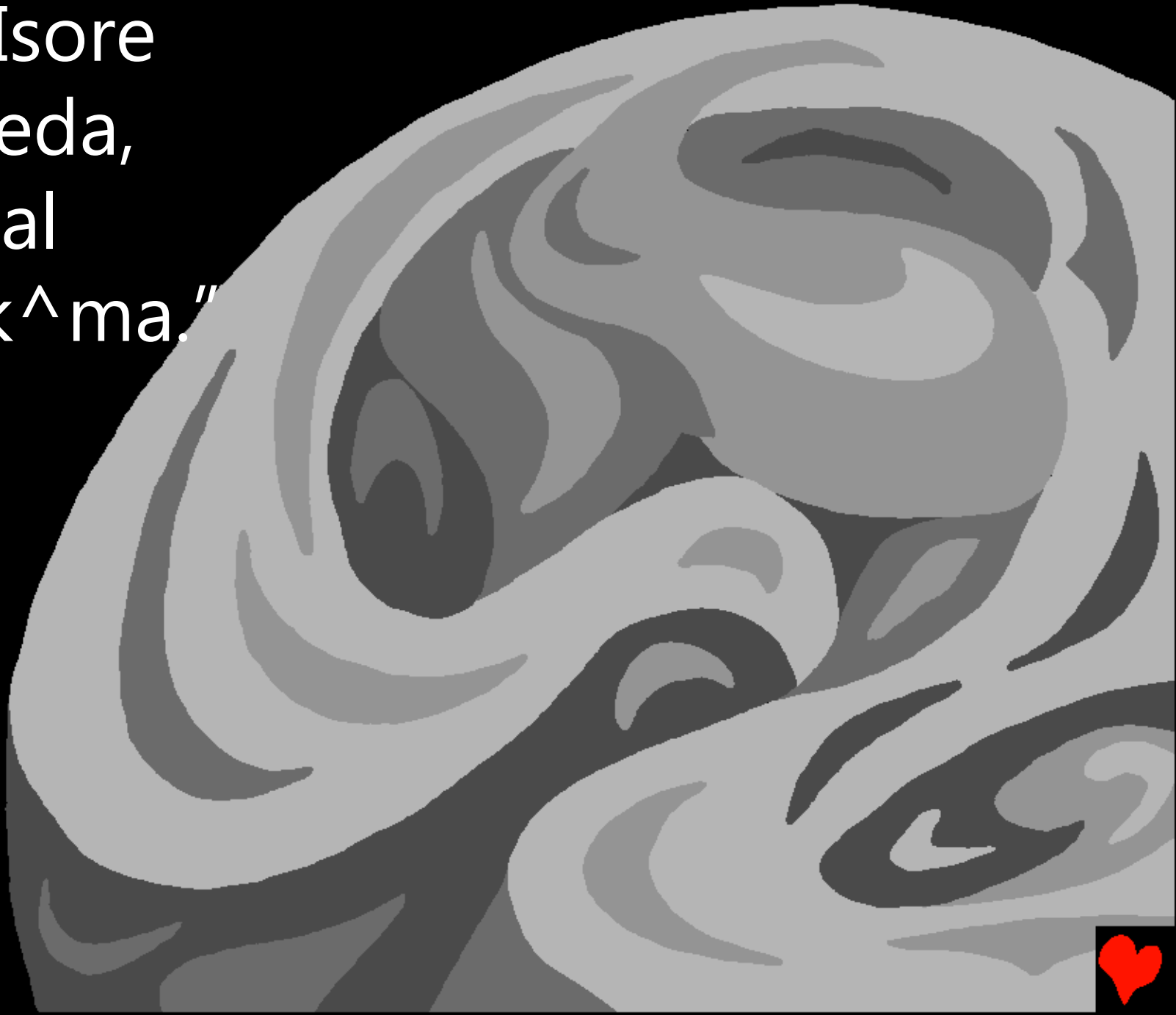
Unre dha@rti do  
begor mut@ha@n  
ar phakage  
tahe~kana.



Ar n#ut do  
ona cetanre  
tahe~kana.



Unre Isore  
menkeda,  
"Marsal  
hoyok^ma."

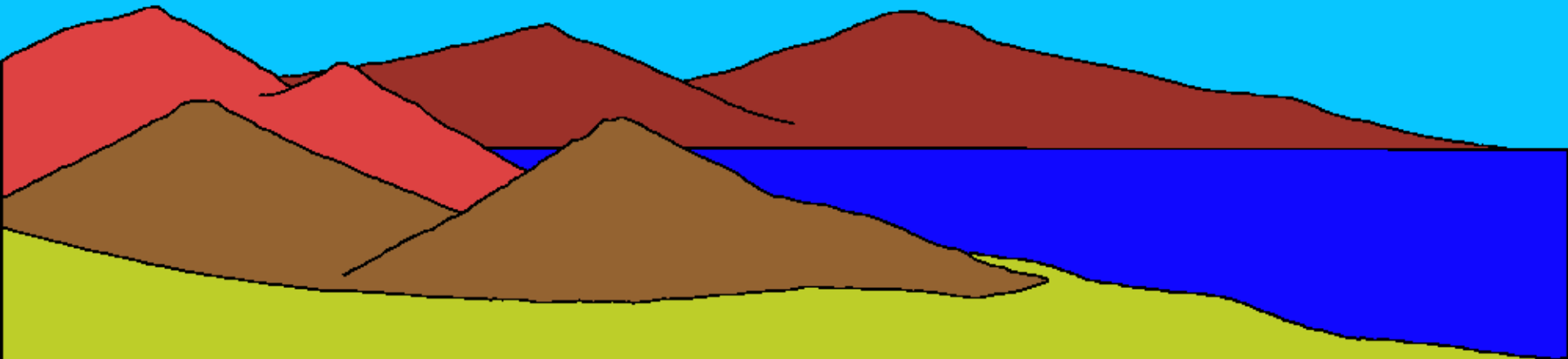


Ar marsal hoyena. Isor do marsal dine  
metat^a ar n#ut do n#inda@i  
metat^a. Ar a@yup^ena ar  
setak^ena pa@hil dinge.





Dosar hilok^, Isor do serma latarre  
jalapuri ar dorea~o ar gad@ako  
hoyok^  
reak^e hukumkeda.



Tesar hilok^ do Isore menkeda,  
"Rohor@"



Isore hukumkeda, gha~sko, bahako,  
na@~r@i~ko,

ar dareko hoyok^ma.

Ar onako do  
hoyena.



Ar a@yup^ena ar setak^ena  
tesarak^ dinge.



Unre Isor do sin# cando ar  
n#inda@ cando ar a@d@i uta@r  
ipilkoe benaoket^koa one  
onko do okoege bako  
lekha caba dar@eako.  
Ar a@yup^ena  
ar setak^ena  
ponak^ dinge.



Isorak^ tayomak^  
sirja@u ta@likare do  
hakoko ar  
ce~r@e~koko  
tahe~kana.  
Mo~r@e~ak^ dinre  
uni do banar sec^  
dharan la@t@u  
hakoko ar jhake jhak  
ka@t@ic^ hakoko,  
jelen#



Isor do joto lekan  
hakokote dha@rti  
reak^ dak^koe  
perec^keda  
ar joto lekan  
ce~r@e~ do ot,  
dorea~o ar sermare  
ud@a@u bar@ae  
la@git^e  
sirja@uket^koa. Ar  
a@vup^ena ar



Ona tayom Isor do arho~e menkeda.  
Uni doe menkeda, "Dha@rtire  
jiwiankoko sirja@u  
mar@an\$ok^ma . . ." Ar joto lekan  
janwarko, tejoko, len#ok^  
t@un\$d@a@nkoko hoyok^ma.  
Ond@e do dha@rti lar@aok^ lekan  
ha@tiko ar banako, dak^ ar ghut@ure  
talen jiwiankoko



talenma.

Ar had@rap ga@~r@i~ ar mon#j  
ban\$ n#elok^ tayanko ho~ko  
sirja@uk^ma. Pat@wa ar ca@tur  
tor@ ho~ko sirja@uk^ma. Usul jirap  
ar a@sul pusiko ho~. Isor do joto  
lekan janwarko ona dinreye  
sirja@uket^koa.

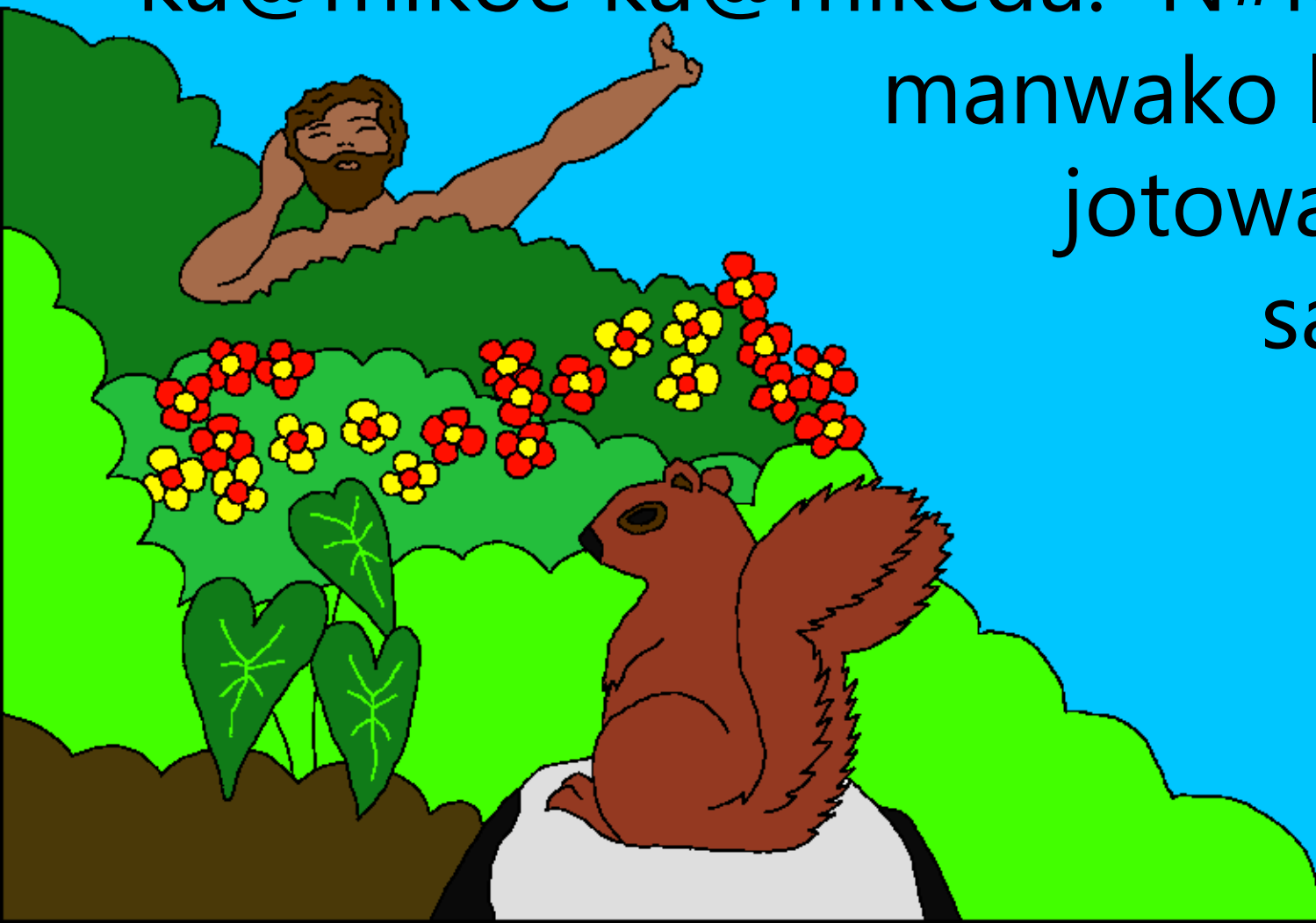




Ar a@yup^ena ar setak^ena turuiak^  
dinge.



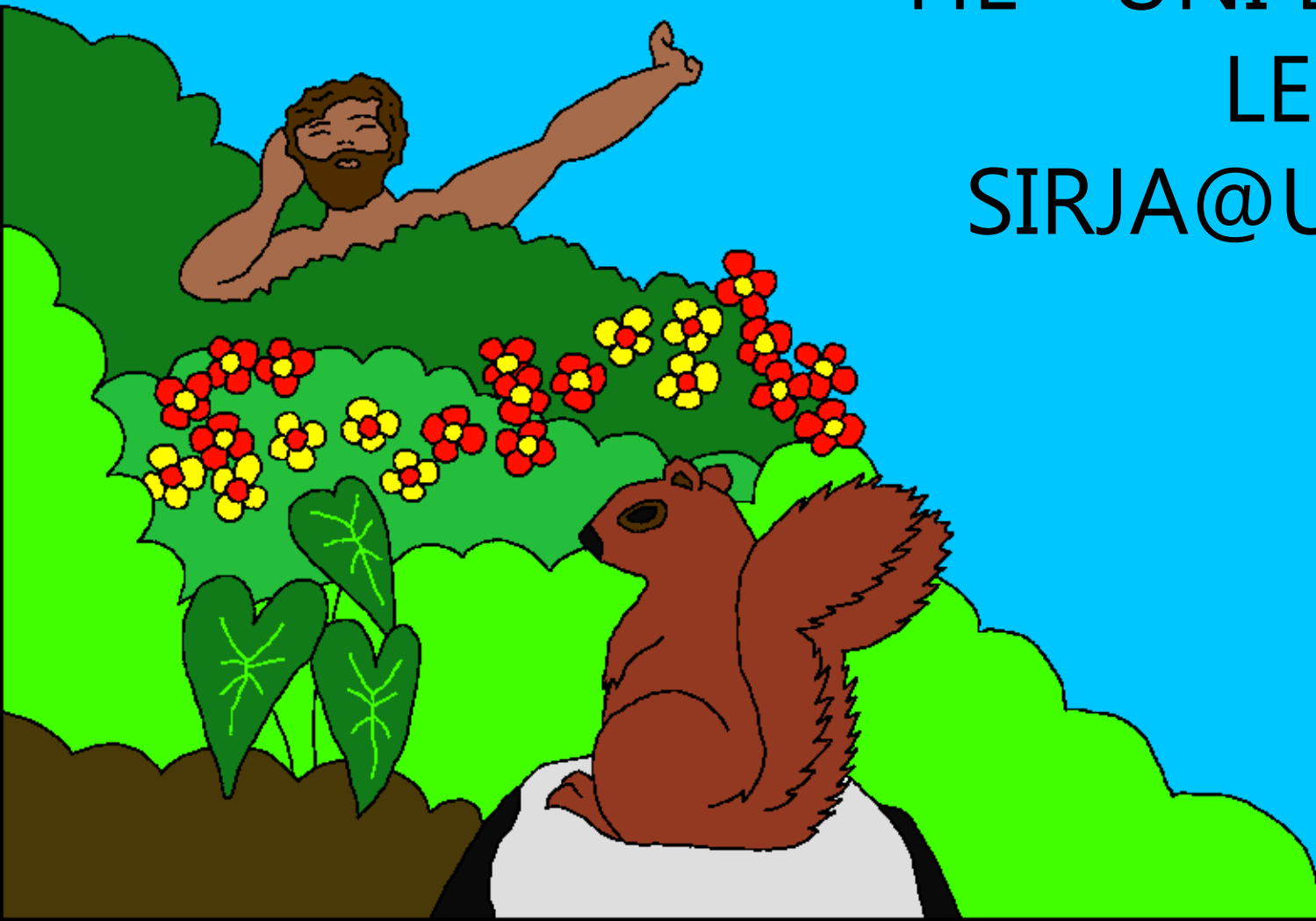
Isor do turuiak^ dinre arho~ thor@ae  
sirja@ukeda – thor@a bises  
ka@mikoe ka@mikeda. N#itok^ do  
manwako la@git^  
jotowak^ tear  
sa@tena.



Ond@e do t@a@nd@ire janwarko  
la@git^ jomak^ ho~e benao akat^  
tahe~kana. Isore menkeda, "Dela  
aboak^ mut@ha@@n  
leka manwa bon  
benaoea. Uni do  
dha@rtire tahenkan  
sanamak^ko  
cetanreye  
ma@likok^a."



ISOR DO AC^AK^ MUT@HA@N  
LEKAGE MANWAE BENAOKEDEA;  
HE~ UNI DO AC^  
LEKAGEYE  
SIRJA@UKEDEA.



Isor do Adame  
metadea,  
"Bagwan  
reak^  
ja~ha~t@ak^ge  
saname jomme,  
menkhan boge  
ba@r@ic^ dare  
reak^  
jo do bam jom  
dar@eak^a.

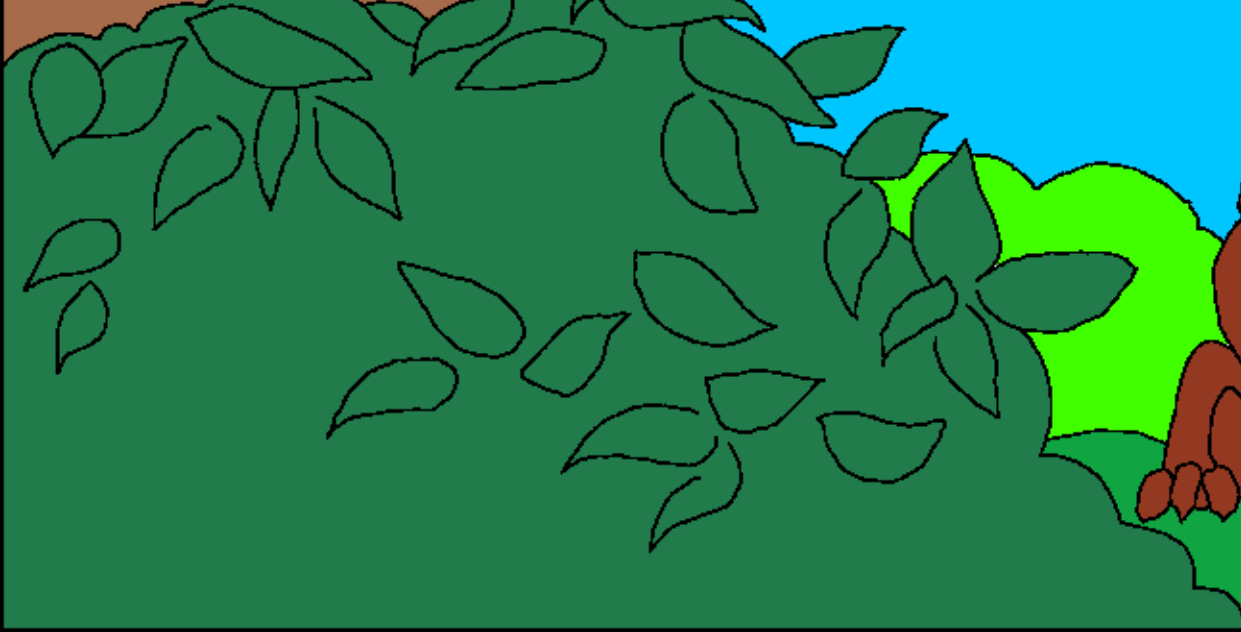


Ar ona dare  
reak^em  
jomle  
khan  
end@ekhan  
am do  
kha@t@igem  
gujuk^a."



Probhu Isore menkeda, "Manwa  
esker tahe do ban\$ bhagea.

In# do mit^t@en gor@oyic^in#  
benaoaea." Isor do joto  
lekan janwar ar ce~r@e~ko  
Adam t@hene a@guket^koa.



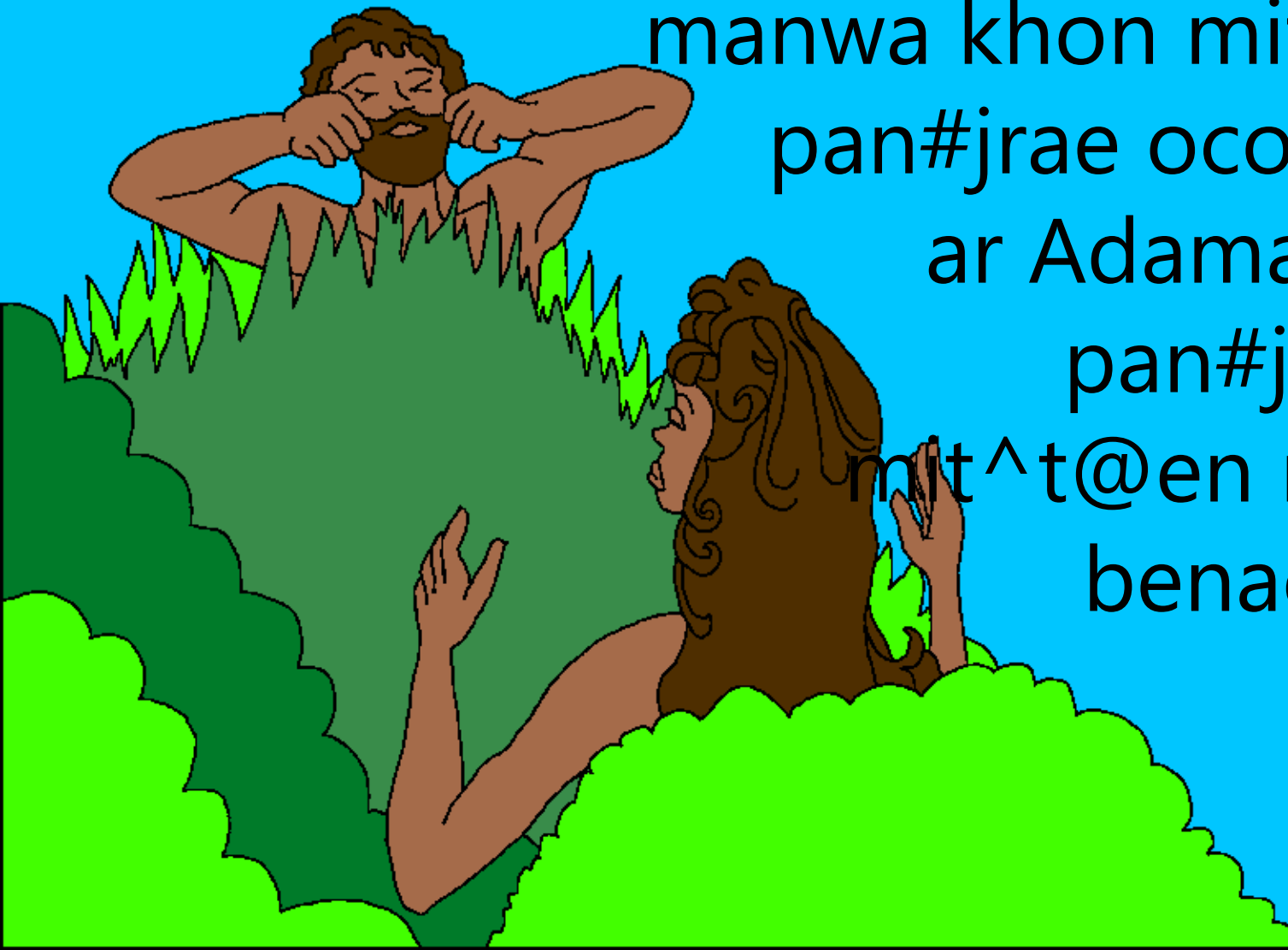
Ar Adam do onko jotoe  
n#utumket^koa.

Ar manwa do jotoko khon budan  
hoyena. Mekhan sanam lekan janwar  
ar ce~r@e~koko tahe~kanre  
ho~ Adamren lek leka  
gate do bako tahe~kana.





Isor do Adam ja@pit^e emadea. Are  
ja@pit^keda. Isor do ja@pit^ akat^  
manwa khon mit^t@en  
pan#jrae ocok^keda  
ar Adamak^ ona  
pan#jra khon  
mit^t@en maejiue  
benaokedea.



Isorak^ benaore maejiu do  
a@d@i t@hike tahe~kana

Adamren  
gate la@git^.



Isor do turuiak^ dinre sanamak^e  
benao sa@tkeda. Unre Isor do  
eaeyak^ dine bhorada ar  
jira@uk^ dine hoe ocokeda.



Ona Eden bagwanre Adam ar  
ac^ren ba@hu hawa do Isor  
botorae tuluc^  
a@d@i sukrekin tahe~kana.  
Isorge unkinren Probhu, ar  
jogaic^  
ar gateye tahe~kana.



Tinre Isor do jotowak^e benaokeda

Baibel reak^ noa golpo do Isorak^ katha  
kana,

Noa do na#mok^a

Genesis 1-2

"Amak^ katha reak^ seledok^ do marsale  
emok^a."

Seren#ko 119·130



Muca@

t^



Baibel reak^ noa golpo do aboren bhage  
Isorak^ rean\$e la@i abon kana one okoe  
doe benaoakat^ bon ar One okoe do am  
rean\$ bad@ae sanayede.

Isore bad@aea abo do ba@r@ic^ak^bon  
ka@mi akada, one okat@ak^ uni do ka@iye  
metak^kan. Ka@i reak^ kur@a@i do  
gujuk^ kana, menkhan Isor do am  
nuna@k^e dula@r@et^mea je ac^ren  
hopen Jisui kolkedea, ar uni do amak^ ka@i  
ia@te krusre duke jomkeda. Jisu doe jiwet^  
rua@r@ akana ar sermateye calao akana!  
Judi Jisurem pa@tia@uk^kan khan  
and@ekhan am do amak^ ka@iko rean\$



Judim pa@tia@uk^kan khan noa do sa@ri  
kana mente, end@ekhan Isor metaeme:  
Dula@r@ia@ Jisu, in#in# pa@tia@uk^ kana  
am dom Isor kana, ar manwam hoyena ar  
in#ak^ ka@i la@git^em goc^ena ar n#itok^  
dom jiwet^ beret^ akana. Dayakate in#ak^  
jionre hijuk^me ar in#ak^ ka@iko ika@  
ka@tin# me jemon nawa jion tahentin# ar  
mit^ din am t@henin# calak^te jaejug am  
tuluc^ in# taken. Gor@owa@n# me  
ar dayawa@n#me jemon amren gidra@  
lekan#  
tahe~dar@eak^. Amen.

