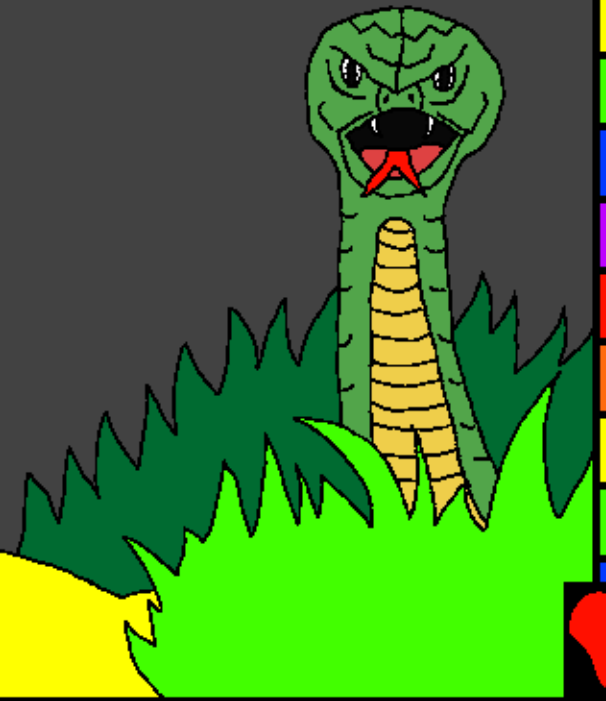


Gidra@ko la@git^ Baibel
Sasapr@aoic^

Manwakoak^ duk
reak^ etohop^



Olok[^] ic[^]: Edward Hughes

Phen kathako hudisic[^]: Byron Unger; Lazarus;
Alastair Paterson

Atan\$ic[^]: M. Maillot; Tammy S.

Torjomayic[^]: Samuel Hasda

Chapa od@ok: Bible for Children
www.M1914.org

©2020 Bible for Children, Inc.

License: Noa golpo do copy arem print dar@eak[^]a,
menkhan a@khrin# do bam a@khrin# dar@eak[^]a.



ISOR DO SANAMAK^E

BENAOKEDA! Isor do

tinre pa@hil manwa, Adame

benaokedea, unre

uni do ac^ren ba@hu

hawa

tuluc^ Eden

bagwanreye

tahe~yena.



Unkin do Isorak^ kin bataoet^
tahe~kante a@d@i kusikin tahe~kana
ar unkin sa~ote Isor tina@k^ dine
tahe~kan una@k^ din
unkin do mon#jkin
tahe~kana
mit^ din





Bin# do
Hawae
kulikedea,
"Isor do cet^ joto
dare reak^ jo
jome mana
akat^bena?"



Uniye ror@
rua@r@keda, "A@lin#
do joto dare reak^
jo gelen# jom dar@eak^a,
menkhan mit^t@en dare
reak^ jo do balin#
jom dar@eak^a."





"Ona reak^ jo
lin# jom se ona
lin# jot@ed end@ekhan
kha@t@igelin# gujuk^a."

Bin# do
laloce uduk^adeteye
metadea, "Aben
do baben gujuk^a."





“Aben do Isor leka ben hoyok^a.” Hawa do ona dare reak^ joe khojkeda. Uni do bin#ak^ kathae an#jomkeda ar ona dare reak^ joe jomkeda.



Hawa do Isorak^ hukum
bae bataoleda ar Adam
ho~e jom ocokedea,
Adam do men
hoekok^taea, "Ban\$! In#
do Isorak^ hukum
ba@n# ra@put^
dar@eak^a."





Tinre Adam ar Hawa
dokin ka@ikeda unre bana
hor@ge ulun\$gekin bujha@ukeda.





Unkin

do loa dare

reak^ sakamte kicric^kin benaoana

arkin horok^ana. Ar Isor saman\$

khon

unkin do iba@wo@rekin akoyana



Ado a@yup^ jokhec^ rear@
tahe~kanre Isor
do bagwanteye hec^ena. Uni do
Adam ar Hawa okat@ak^ kin ceka
akat^ onae bad@aekeda. Adam
do Hawae doskedea, Ar
Hawa do bin#e
doskedea.



Isore menkeda, "Bin# do sarapanic^e
hoyok^ma. Ar maejiu do tinre
gidra@i janamea unre uni
do hasoteye thakaok^a."



"Ar Adam amem ka@i akat^te dha@rti
ho~ sarapanak^ hoeyente onare
ku~r@it^
rama ar ra@n\$ga@ini janamok^a. Ar
din hilok^ jomak^ la@git^ am do
a@d@i at@ khat@aok^ hoyok^ tama
ar bal bal dak^
jorok^ tama."





Isore doholet^kin
Adam ar Hawa do ona
mon#j bagwan khone
od@okket^kina@.



Ente unkin dokin
ka@ikeda, ar jaejug
jiwet^ Isor khon kin
begarena.





Isor do
jolok^kan tarwar@eye
benaokeda ar unkin
od@okket^kina@ are
jotonket^kina@.





Isor do Adam
ar Hawa la@git^ harta
reak^ horok^ak^e
benaoat^kina@.
Oka khon Isor
do hartae
n#amat^kina@?

Unre, Adam ar Hawa do mit^t@en
gharon#j hoyen ta@kina. Unkinren
pa@hil hopon, Kain do ma@liye
hoyena. Ar

dosaric^ hopon
Habel do
gupiyic^e
hoyena.

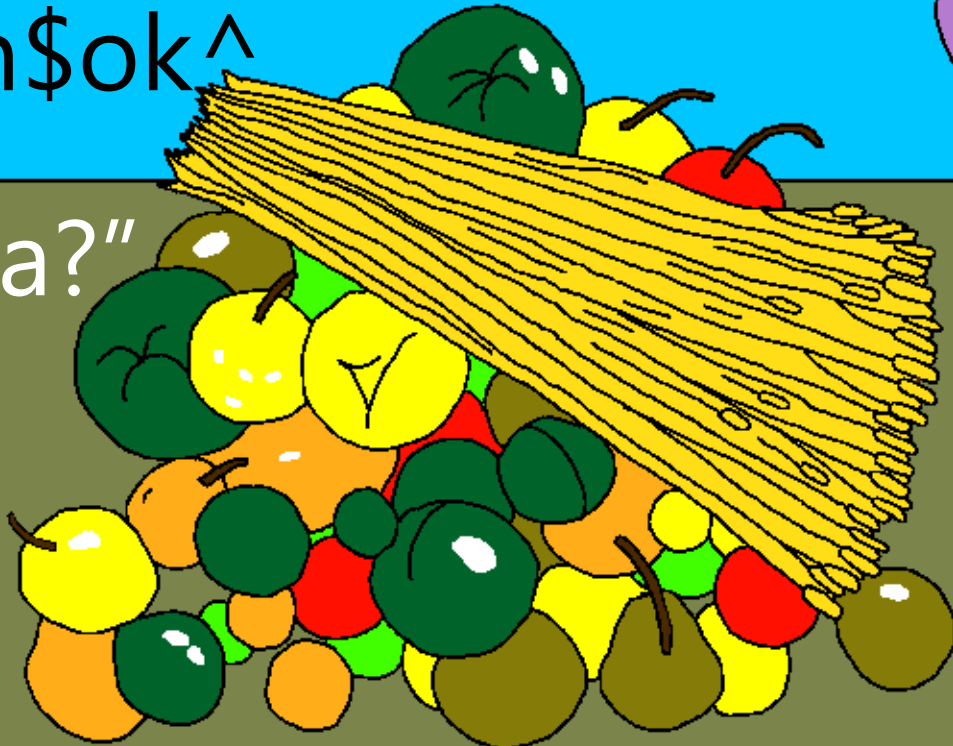


Mit^ din Kain do Isor la@git^ ar@ak^
sakam a@gukateye dankeda. Ar
Habel do ac^ren mon#j uta@ric^
bhed@a Isor la@git^e
dankede. Ar Isor
do Habelak^
danteye
kusiye.



Isor do Kainak^ dante bae kusilena.
Onate Kain do a@d@iye edreyena.
Menkhan Isore menkeda,
"Bhageak^em ka@mi akat^
khan amak^ ho~ cet^ ban\$
atan\$ok^

tama?"



Kain do edrete okate ho~ bae
calak^kan tahe~kana. Thor@a din
tayom

uni do mat@teye calaoena ar

Habel cetanre jhape

emket^te uniye

goc^kedeaa.



Isor do Kaine metadea, "Amren
boeha Habel do okare menaea?"
Kain do er@e ror@ket^teye
menkeda, "In# do ba@n#
bad@aea."



In# do cet^ in# boeharen
rukhia@yic^ ka@na@n#?

Isor do Kain sahao dar@eak^ Jeka
sa@ja@iye

emadea are metadea am
do amak^ jaegare uprim

tahena.



Kain do Probhu saman\$ khone
calaoena. Uni do Adam ar Hawaren
hponerae baplakedea.

Ar unkinak^



gharon#j
do san\$ge
idiyena.



A@d@i usa@rge, Kainren gor@om
gidra@ko
ar onkokoren gidra@kote oneye
n#amlet^ nagraha doe
perec^keda.



Mit^ jokhec^, Adam ar
Hawawak^ gharon#j do
a@d@i usa@ra bad@hao
idiyena.



Onako dinre manwa do
n#itok^renko khon ho~ d@her
din jiwet^ko tahe~kan
tahe~kana.



Hawa do tinre Sethe janamkede
unreya menkeda, "Isor do Habelak
jaegare Sethe emakawa@din#a."



Seth do a@d@i bhage hor@e
tahe~kana,

Uni do 912 serma jiwet^e tahe~kana
ar aema gidra@koko tahe~kantaea.



Ina@ tayom dha@rtire manwa
doko

san\$ge idiyena ar d@herkoge
ka@ireko boloyena mit^
pir@hiren do et@ak^



pir@hirenko
pan#jaket^^koa.



Sesre Isor do manwa ja@t
maraokoe got@akeda ar
sanam lekan janwar
ar ce~r@e~ko ho~.



Isor doe bhabnayena ac^e
benaolede manwa ia@te.
Menkhan mit^t@en
manware uni



doe kusiayena ...



Uni manwa do Noahe tahe~kana.
Seth bo~sren Noah do dhorom

ar

bindusa@n hor@e tahe~kana.

Uni do Isor tuluc^e
dar@ankan tahe~kana.



Uni do ac^ren pea hopon Isor
botorae reak^e cet^akokan
tahe~kana. Isor
do n#itok^ mit^t@en beses
horre

Noah beohare

la@git^e

got@akeda.



Manwakoak^ duk reak^ etohop^

Baibel reak^ noa golpo do Isorak^ katha
kana,

Noa do na#mok^a

Genesis 3-6

"Amak^ katha reak^ seledok^ do marsale
emok^a."

Seren#ko 119·130



Muca@

t^



Baibel reak^ noa golpo do aboren bhage
Isorak^ rean\$e la@i abon kana one okoe
doe benaoakat^ bon ar One okoe do am
rean\$ bad@ae sanayede.

Isore bad@aea abo do ba@r@ic^ak^bon
ka@mi akada, one okat@ak^ uni do ka@iye
metak^kan. Ka@i reak^ kur@a@i do
gujuk^ kana, menkhan Isor do am
nuna@k^e dula@r@et^mea je ac^ren
hopen Jisui kolkede, ar uni do amak^ ka@i
ia@te krusre duke jomkeda. Jisu doe jiwet^
rua@r@ akana ar sermateye calao akana!
Judi Jisurem pa@tia@uk^kan khan
and@ekhan am do amak^ ka@iko rean\$



Judim pa@tia@uk^kan khan noa do sa@ri
kana mente, end@ekhan Isor metaeme:
Dula@r@ia@ Jisu, in#in# pa@tia@uk^ kana
am dom Isor kana, ar manwam hoyena ar
in#ak^ ka@i la@git^em goc^ena ar n#itok^
dom jiwet^ beret^ akana. Dayakate in#ak^
jionre hijuk^me ar in#ak^ ka@iko ika@
ka@tin# me jemon nawa jion tahentin# ar
mit^ din am t@henin# calak^te jaejug am
tuluc^ in# taken. Gor@owa@n# me
ar dayawa@n#me jemon amren gidra@
lekan#
tahe~dar@eak^. Amen.

