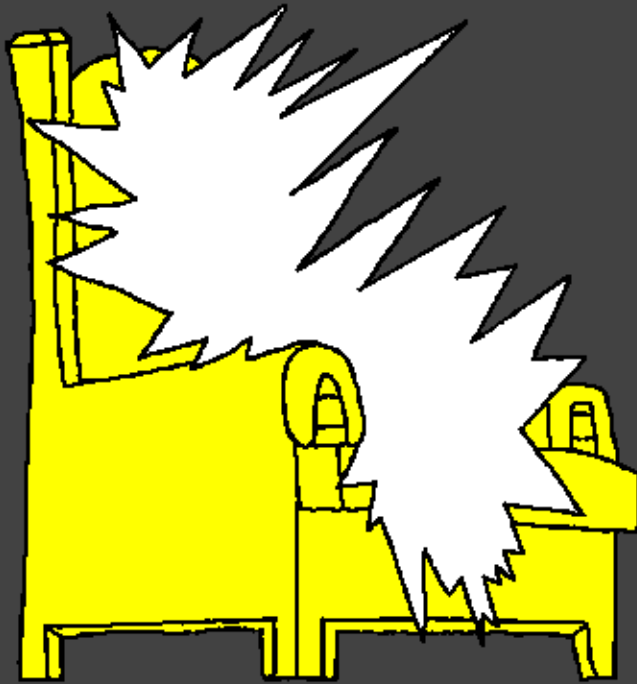


www.BibleForChildren.org

Jon 14



Jises kakane tesol kahikahin, “Kum aile hahakawata
namilomuto ti tuahe tenen na waliko. Namilomuto kewa
xoxoan ti Haeu ma nga. Ti tone tel Tamak Haeu kilan
ing. Na kumahe salan kaie nga tai kakane amuto. Nga
lua hani ien apeseniai ingamuto. Na nga apeseni kewa
nga aliama waxi
amuto lehe amuto
to kapik
tetesol
tinga
toto.”



Nga Jon tel akikimuto ti *Krais, nga tel tuaumuto
ti ailei puase Haeu hahitake nenein tetan. Tin
masin amuto, nga kau lungei tatale
kawatan nake nga kahikahi Jises

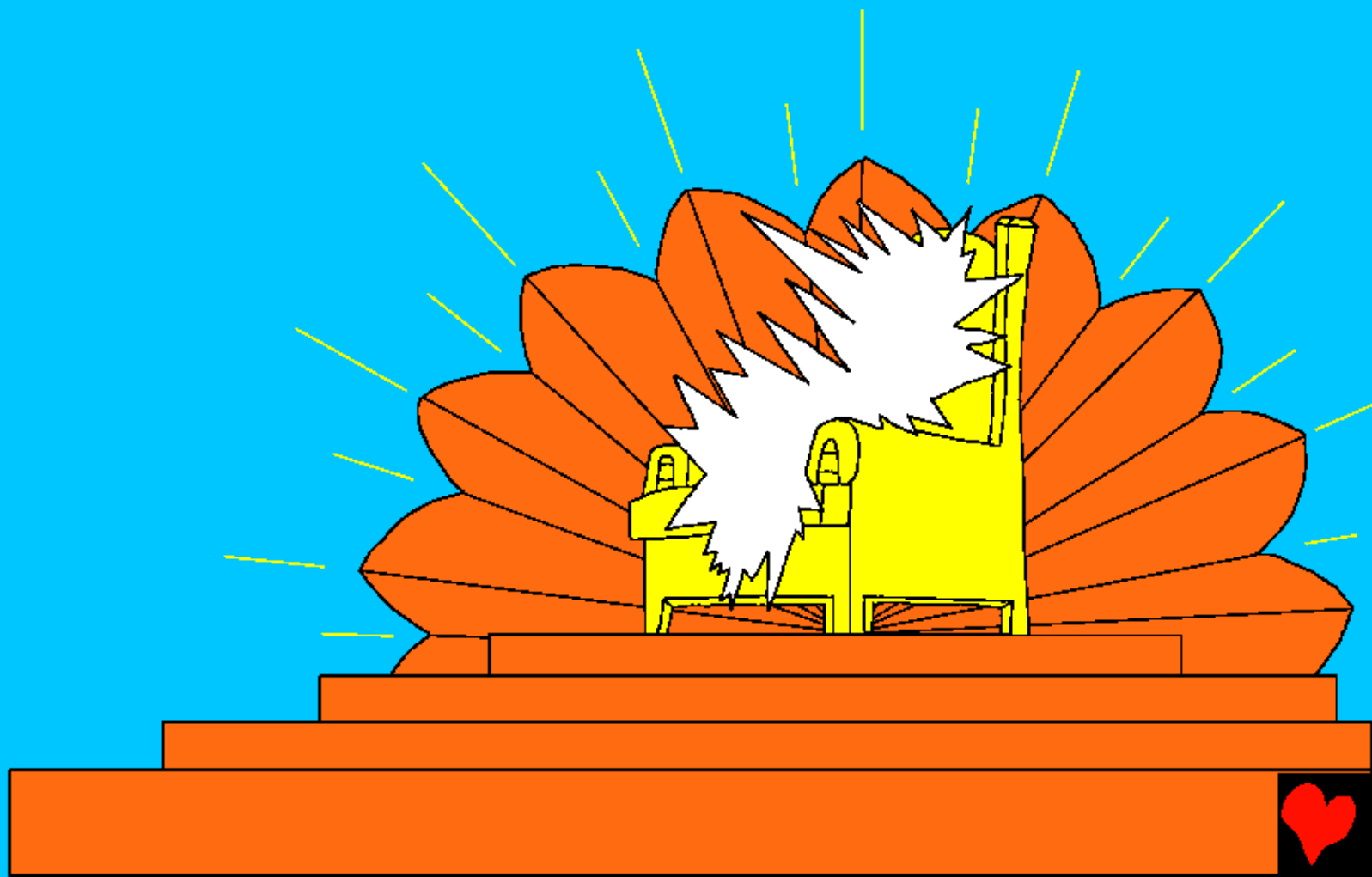
Krais. Laha hakau xaxaweni nga hani texux
xux kokol axan atmos



nake nga kaxi ahuti
kakai Haeu ma lawe
waliko tenen salan
ti pause Jises.



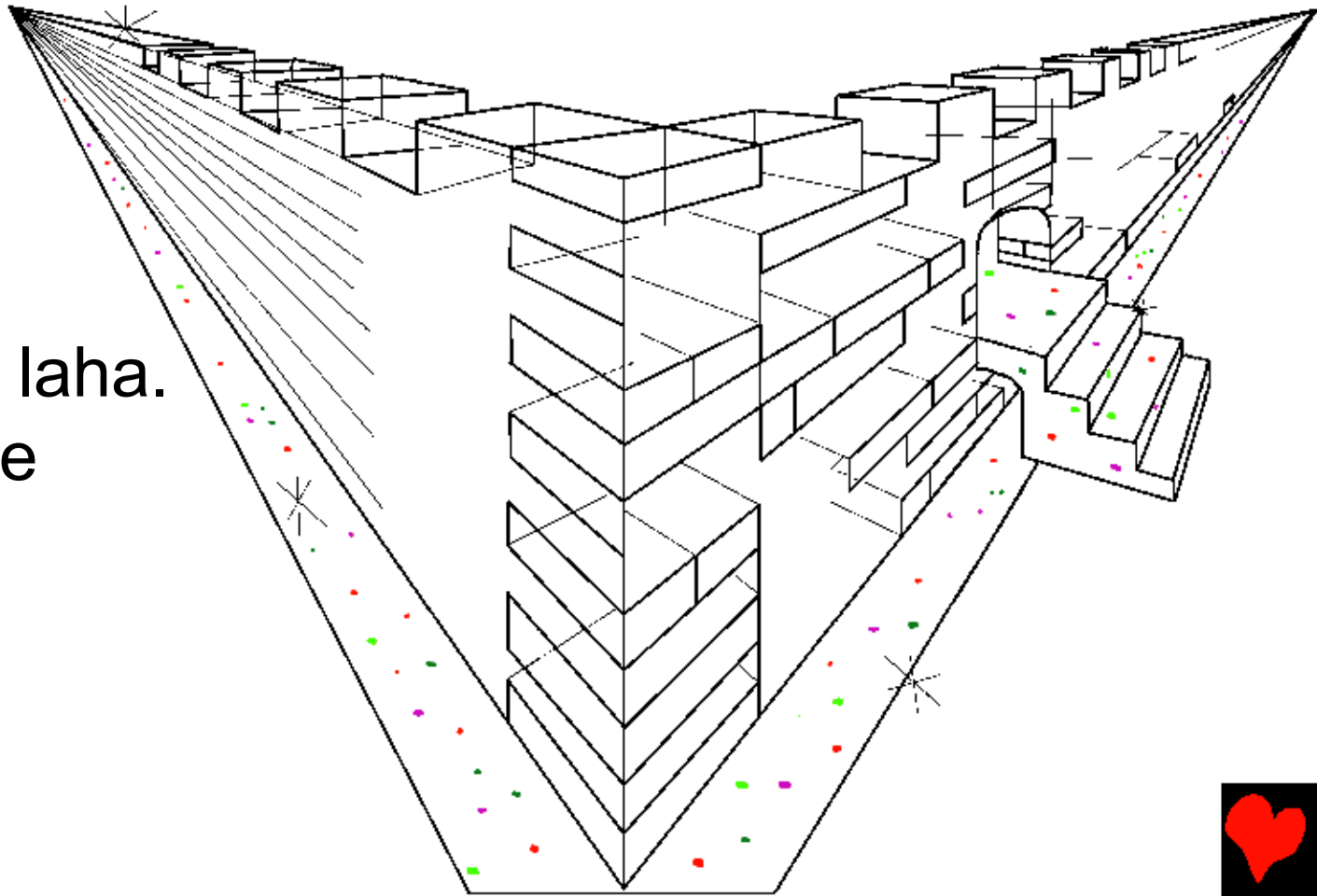
Tuhan tehue Holi Spirit kapiti namilok ape nga ningahi
tehu totoan pate tuah ti tone Haeu ti tel seilon toto.



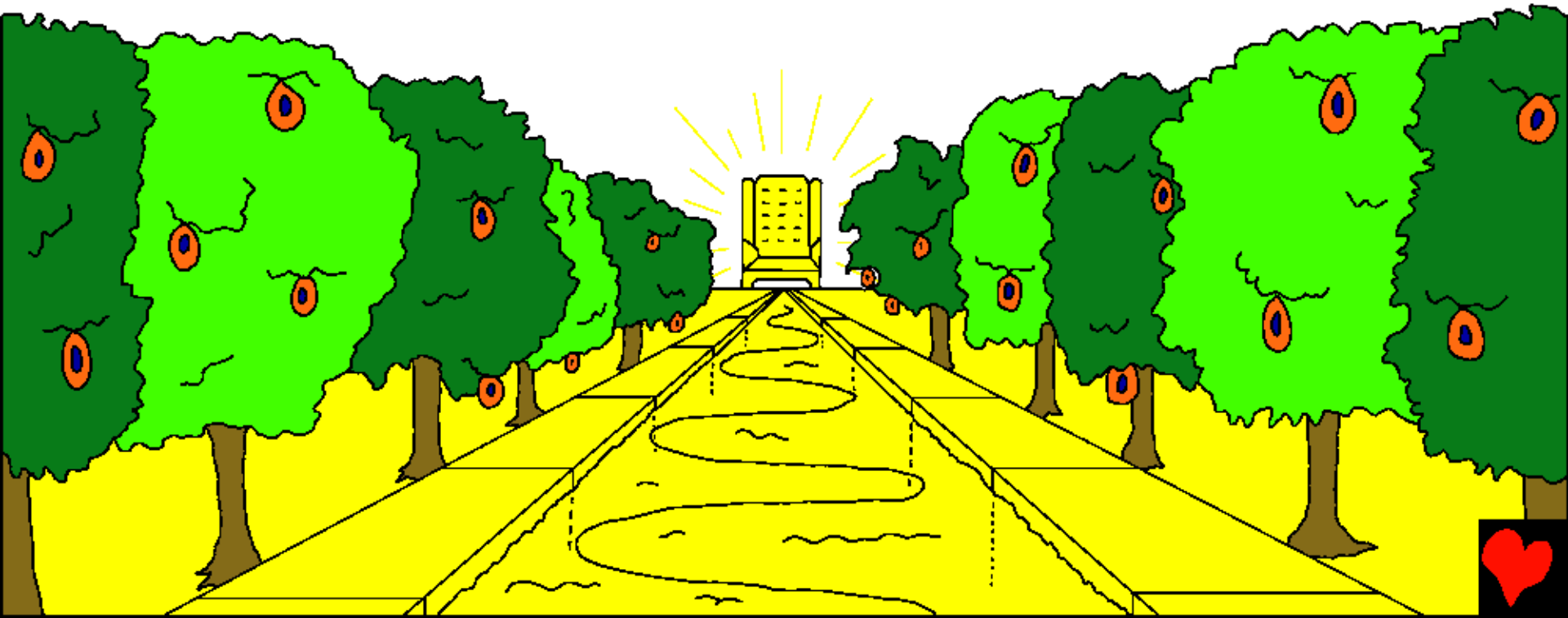
Ape nga hong lawe seilon ma manihuh ti tone Haeu, he tehu pon ie ma hahitakan hetekie ti itax, laha pak ukek, “Kako sameniwa lalape pohe tetel i toto he tehu totoan tuah hetekie tok sipsip uluha. Kako haxawawa axalalu lian tehue.”



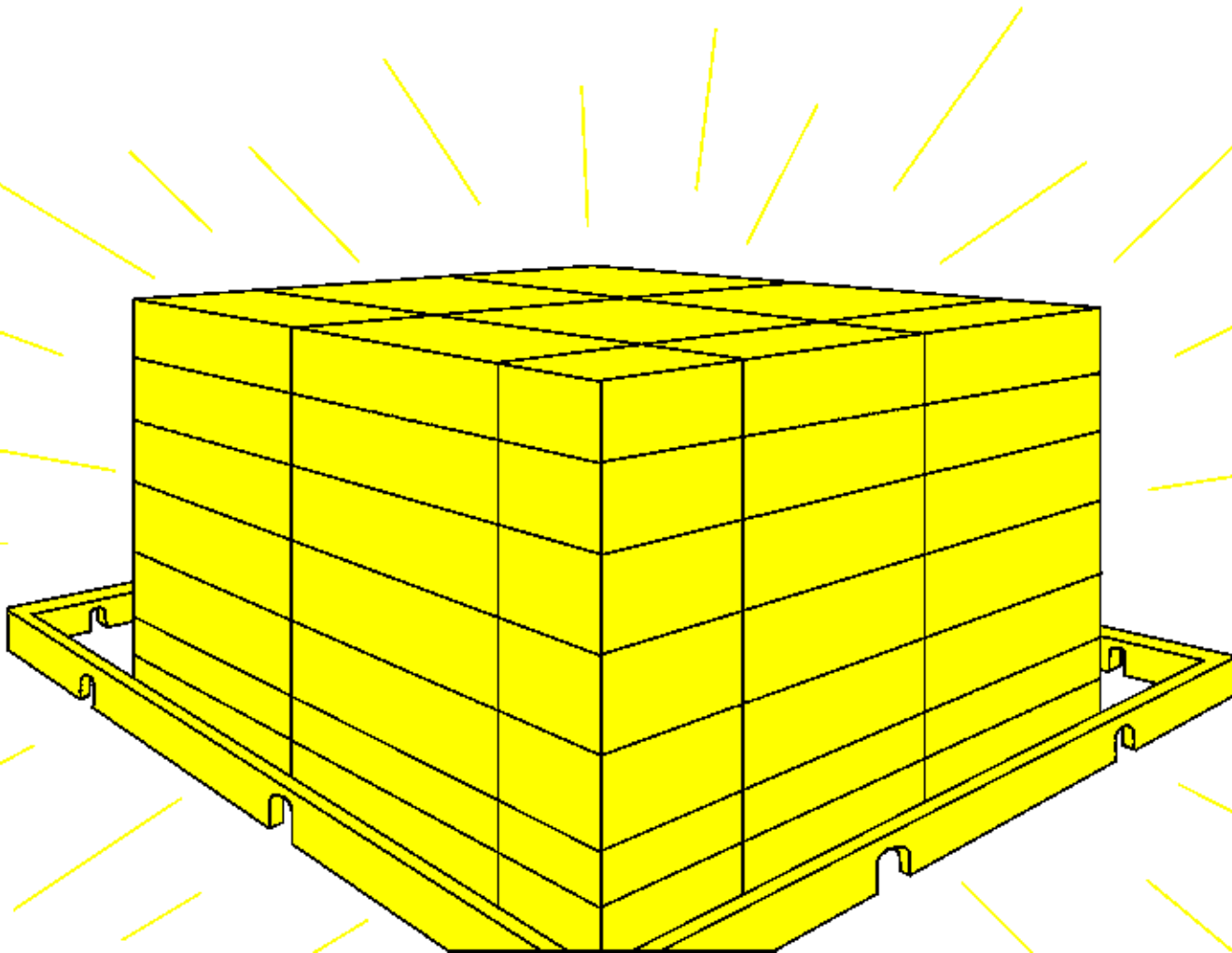
Ape nga ningahi tehu taon ti Haeu, i ape tehu Jerusalem haun. I mosulih ti *tone Haeu. Soliai tanoman masin tel hehin i apepeas ti tehu salaian. Ape tenen kinax ahuma ti tehu totoan tuah ti tone Haeu, i kak eliel ukek, “Hongoa! Tataen ie ahua, Haeu aile tonan kapi teka seilon tetan ape i to hamalum kapi laha. I neini laha ape laha pakata xox kapin.”



Imuh tel *engel kola hani nga tehu kan i xiwewema ti
tehu totoan tuah ti Haeu ma tok *sipsip uluha. I pate
xewan ma i talepalep. I se tehu kan tuah i kikilami
*tonain kapi Haeu ti tap tahi tapoan.



Leili taon tap pupuase alon ma pangapang haxewaian
nake xewai Haeu i haxewa hawane ien ma tok sipsip
uluha se masin xewai alon i haxewa lawe waliko.



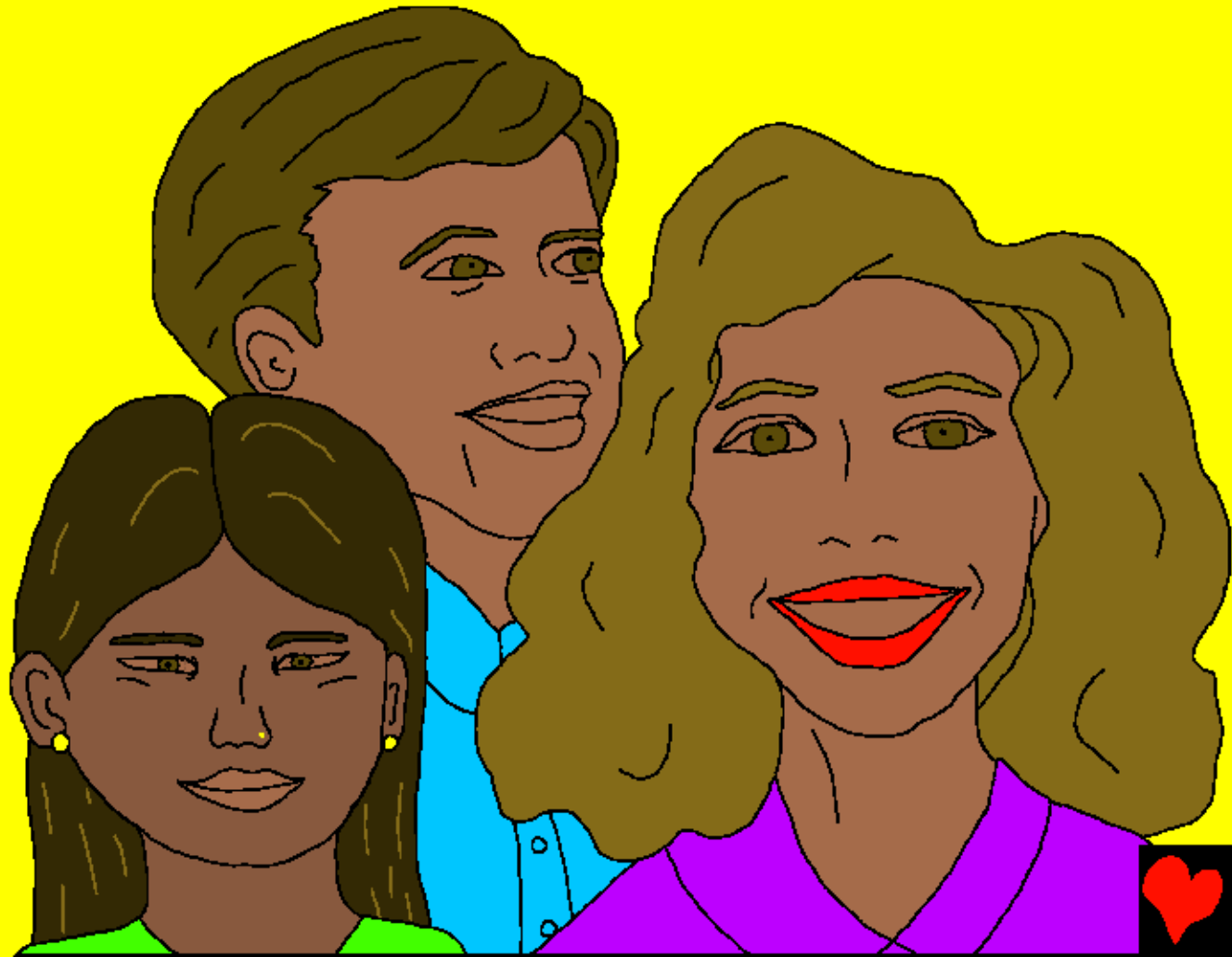
Hatesol waliko lialun se
hahalin leili tehu taon
ien. Tap tel ailei waliko
tenen ti hahien ma
puputa pon soh hani
leilon, mewenae teteka
seilon axalaha taian leili
teik pepai tok sipsip
uluha ti ukei *tonain
kapi Haeu ti tap tahi
tapoan.



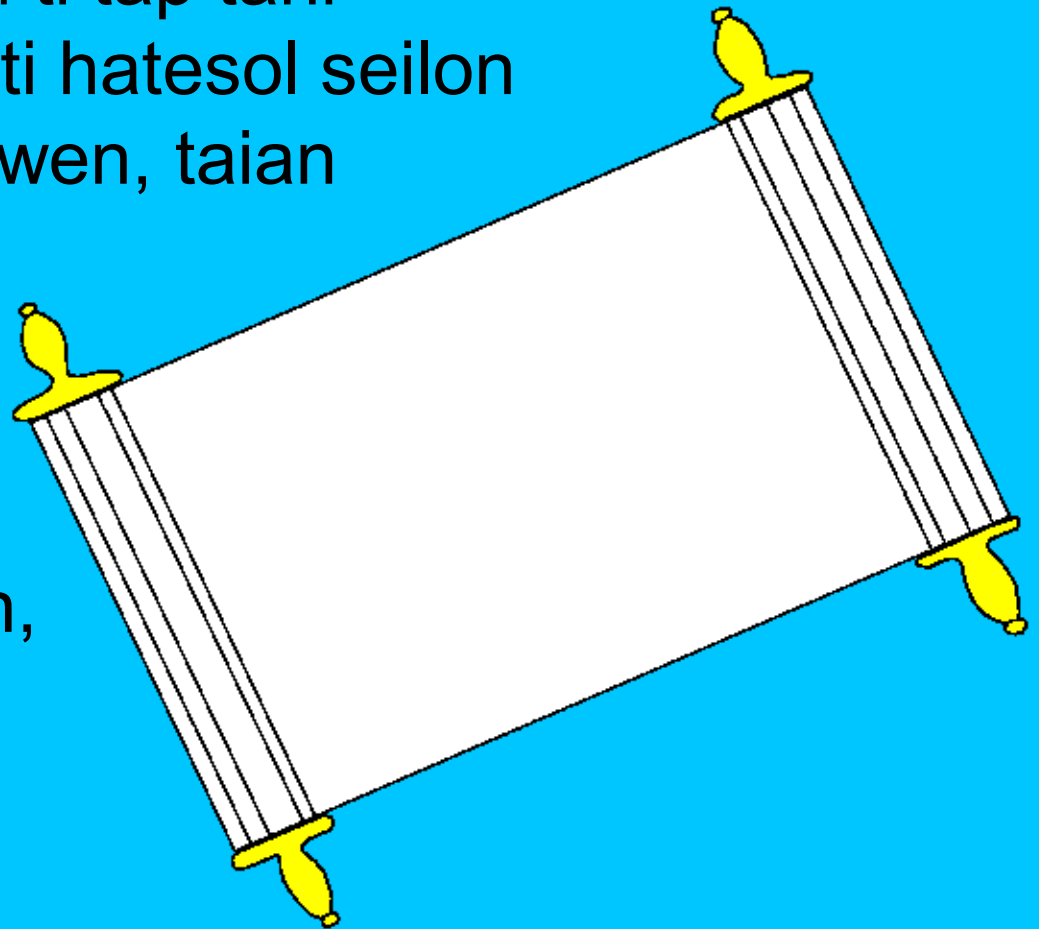
“Ape tatahan kum hatangi ulei laha
nake Haeu xaxaweni hatapo lawe
kawatan. Tap matemate, tap tatahan,
tap tangitangi ma tap moloan ulea
nake sale totone seilon ti imat ape
i tamusuen.”



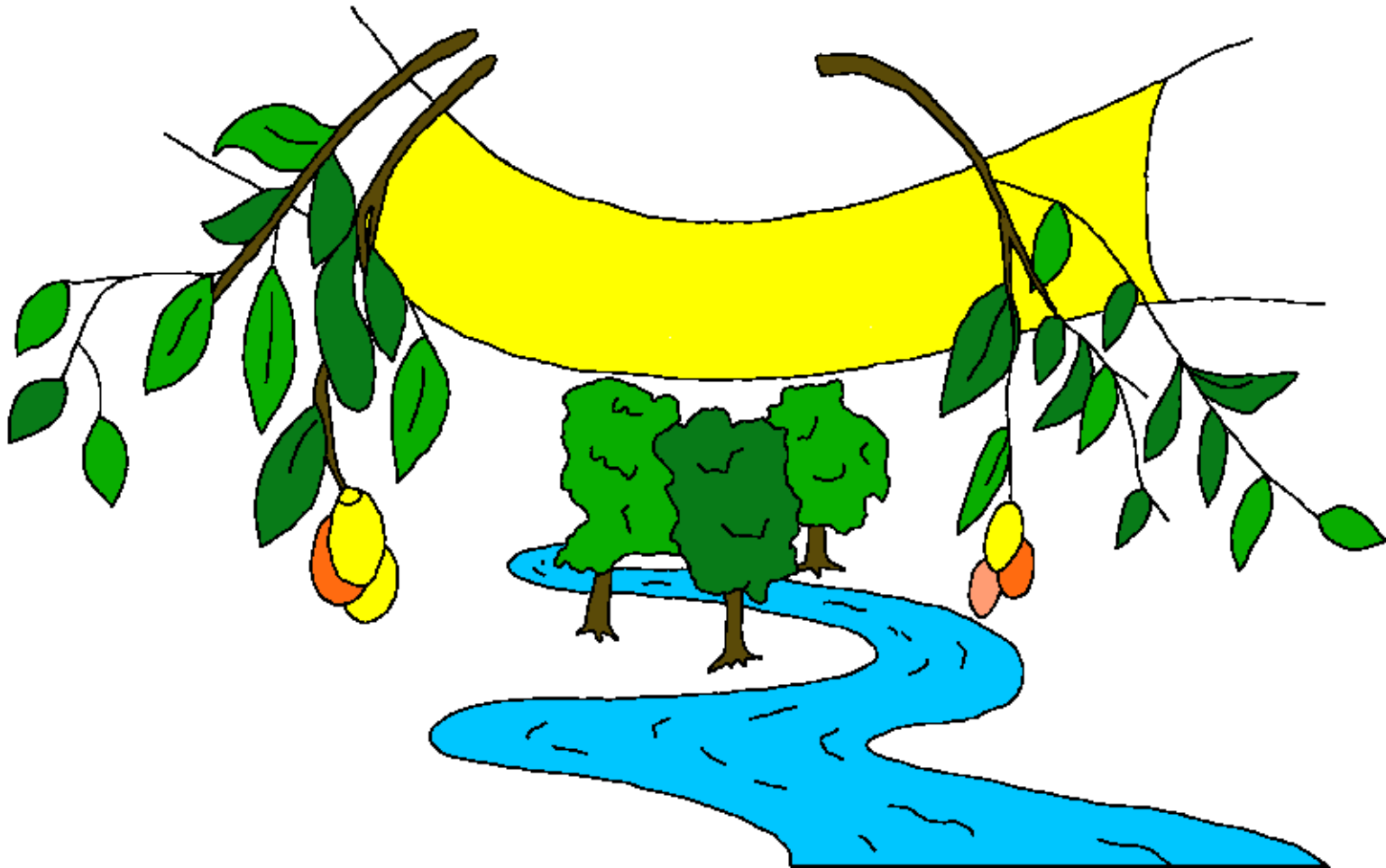
Tap tenen na waliko ti Haeu wataakai i po to leili tehu taon. Tehu totoan tuah ti Haeu ma tok sipsip uluha ien ape teka unau i Haeu lotu sasameni i. Hina axan taian he kawalato ape tataen ien lato pon paxaiai Haeu.



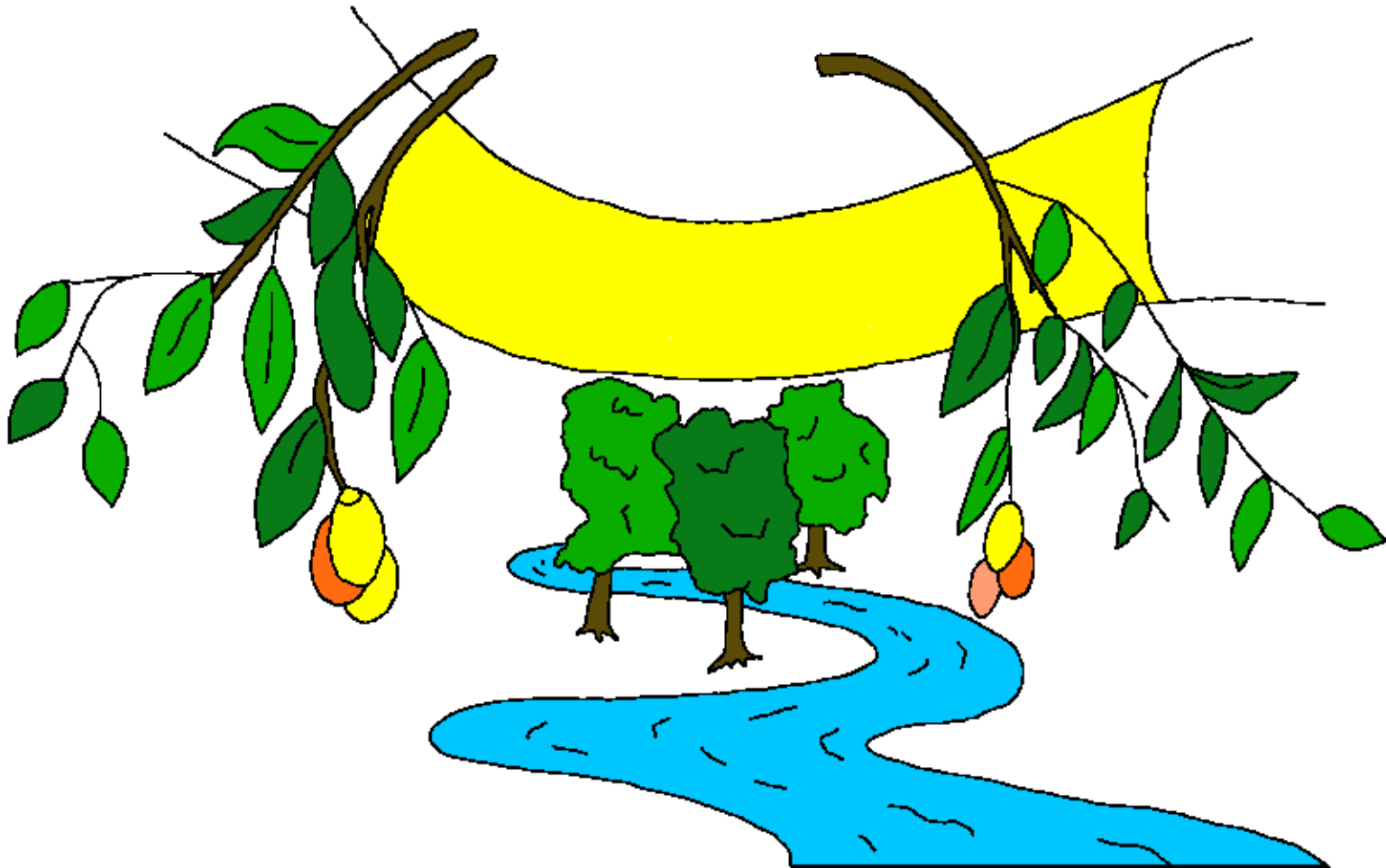
Nga ningahi teka laha matewen, teteka axalaha lalap
ma teka tap axalaha, laha tutu mateiwai tehu totoan
tuah. Ape teka engel hei tesol pepa hina woi hatesol
seilon. Muhin lato hei teik pepa liai hina axe teka seilon
ukei *tonain kapi Haeu ti tap tahi
tapoan. Ape Haeu hiniti hatesol seilon
usiwa saun ti laha ailewen, taian
leili tesol pepa ien.
Hatesol seilon ti tap
axalaha leili teik
pepa ukei tonain kapi
Haeu ti tap tahi tapoan,
i towi laha hani
tehot ah ien.



Ape *Holi Spirit ma teka seilon ti Haeu ukek, “Nahima!”
Lawe seilon laha hong soh kakain leili teik pepa ie, tin
laha ukek, “Nahima!” Tel na pahan is hawane Haeu tel
ngahatian, nahima ape ti soliai ongan i aile hasolia
totone tel seilon ien.



len masin na tel seilon kinawen paxepaxen ti tel seilon
liai neini axi hakila unuman kan ape tinun xux.



Ti lalape wawahen ti Haeu hani
hatesol seilon, i taloma telawe Natun
lehe teka laha soh tetan laha kum selaia
ti Haeu lian tehue. Laha uke non
tonain tuah kapin ti tap
tahi tapoan.



Rom 3:23 Se lawe seilon aile saun lialun. Nanahiakaha hatesol pate i tae haxawai axe Haeu.

Rom 6:23 Nameniwa ka kahi saun lialun se matemate. Tuahe teteka kako pakata hahawane kapi Jises Krai tel Masiwi ti kako, ti *lalape soliai Haeu i hani kako tonain kapin ti tap tahi tapoan.

Hibru 9:27 Mateakaha seilon tehue ape muhin Haeu kahui kaha ususi sale woukaha.

Epesus 2:8,9 Salan wanen, ti *lalape soliai Haeu, Krai awai amuto ti kawatan ti lialui woumuto nake ti xoxoi namilomuto tetan kumahe ti soliai puasamuto. I aile ukek ien lehe tap tel ti kako sameni aliake i.



Rom 10:9,10 Aile ape tel na i kak matuha ka Jises se tel Masiwi tapein ma i soh hawane ka Haeu xahateniwen i ti matean, Haeu awai i ti kawatan ti lialui woun. Se salan wanen nake wasolakaha hani kapi Haeu i sawi na kaha soh hawane ti Jises Krais. Ape ti xoxoi namil ien, na kaha kak matuha ka i se tel Masiwi tapein, Haeu awai kaha ti kawatan ti lialui woukaha.

Jon 3:16,17 “Ti lalape wawahen ti Haeu hani hatesol seilon, i taloma telawe Natun lehe teka laha soh tetan laha kum selaia ti Haeu lian tehue. Laha uke non tonain tuah kapin ti tap tahi tapoan. Kumahe Haeu taloma tel Natun howinia seilon ma axialaha kawatan ti lialui woulaha. Haeu taloma i awaiai seilon ti kawatan ti lialui woulaha.”



1 Jon 5:11-13 Waliko ti Haeu haxewa haniwen kako sale tel Natun, i pate tuah wanen. Haeu hani kako tonain kapin ti tap tahi tapoan nake ti puase tel Natun Jises. Aile ape tel na i pakata xox kapi tel Natun, i uke *tonain kapi Haeu ti tap tahi tapoan. Tuahe tel na i kum pakata kapi tel Natun, i kum uke tonain tenen ien kapi Haeu. Nga tai tesol waliko ien hani teteka amuto soh hawane ti Jises tel Nati Haeu lehe amuto tioi ka amuto ukewen tonain kapi Haeu ti tap tahi tapoan.



Jon 14; 2 Korin 5; Hahatakei Haeu 4, 21, 22

Storyline by: Edward D. Hughes

Illustrated by: Lazarus
and Alastair Paterson

Adapted by: Sarah S.

Seimat NT (ssg) © 2012, Wycliffe Bible
Translators, Inc. All rights reserved.

<https://www.bible.com/bible/626/MAT.1>

©2025 Bible for Children, Inc.

www.M1914.org

www.bibleforchildren.org

