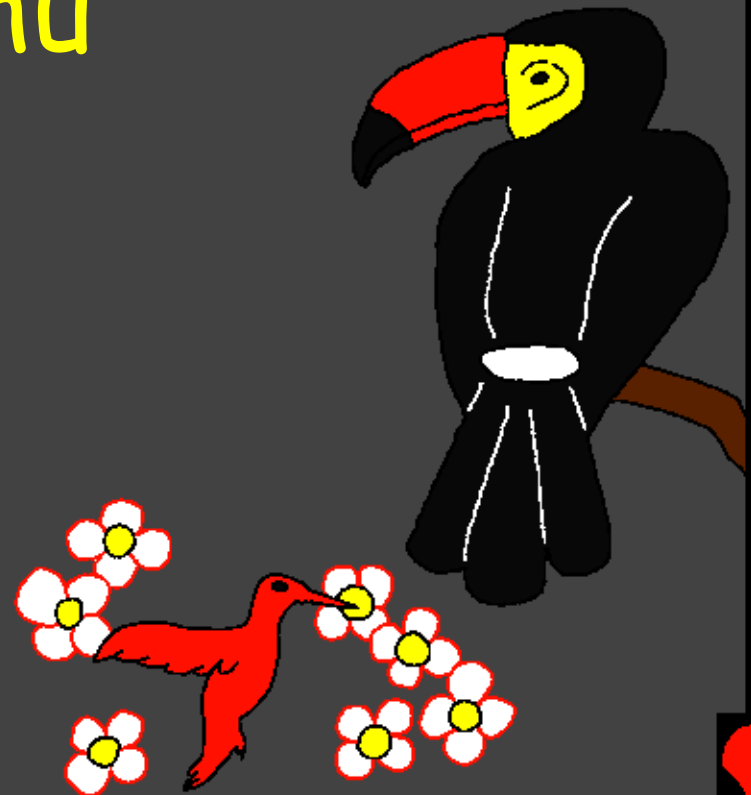
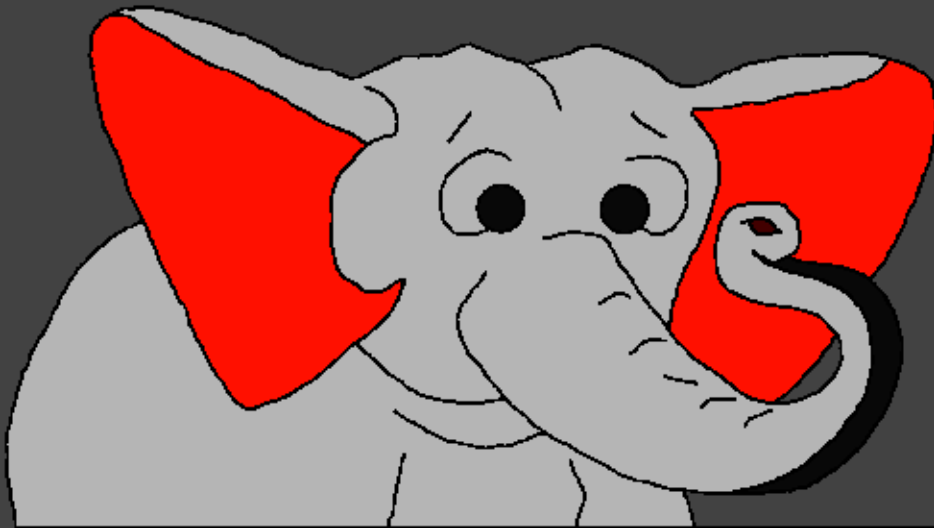


Bibilia cuna Anapiana  
Anhacupangisa

Pidhachita iye  
Mulungu pinthu  
piansene



Anhaculemba: Edward Hughes

Anhacupangisa: Byron Unger; Lazarus  
Alastair Paterson

Anhacusangula: Bob Davies; Tammy S.

Anhcuchinja Mulongero: Sarifo Buramo Cheia

Anhacuphica: Bible for Children  
[www.M1914.org](http://www.M1914.org)

©2020 Bible for Children, Inc.

Lemba apa mulankhulu udhaphatisewe  
bhasa pacuchinja chithancano ichi.



Mbani adhatichita ife? Buku yamulungu, Mafala ache  
Mulungu, asalonga cuti ntundu wamunthu watoma tani.  
Cale, cale, Mulungu achita munthu wacutoma natenepa,  
ampasa zina ya Adamu. Mulungu achita Adamu  
cubulukira na fumbi yampansi. Padhampumira  
Iye Mulungu cuna Adamu, iye akhala  
maso. Adamu azaoneca  
ekha mu munda  
cachemerwa  
Eden.



Mulungu mbasati achita Adamu tayu, Iye achita zico yacubhalica yacuzala na pinthu piadhidhi. Pankiti na pankiti Mulungu achita mbuto dzadhidhi cacamwe, maluwa acusianasiana, miti yaculapha, mbalame na piansene pinthu pinamburuca, pinhama pinafamba pansi. Andedhi, Mulungu achita pinthu

piansene piri  
nzico lero.



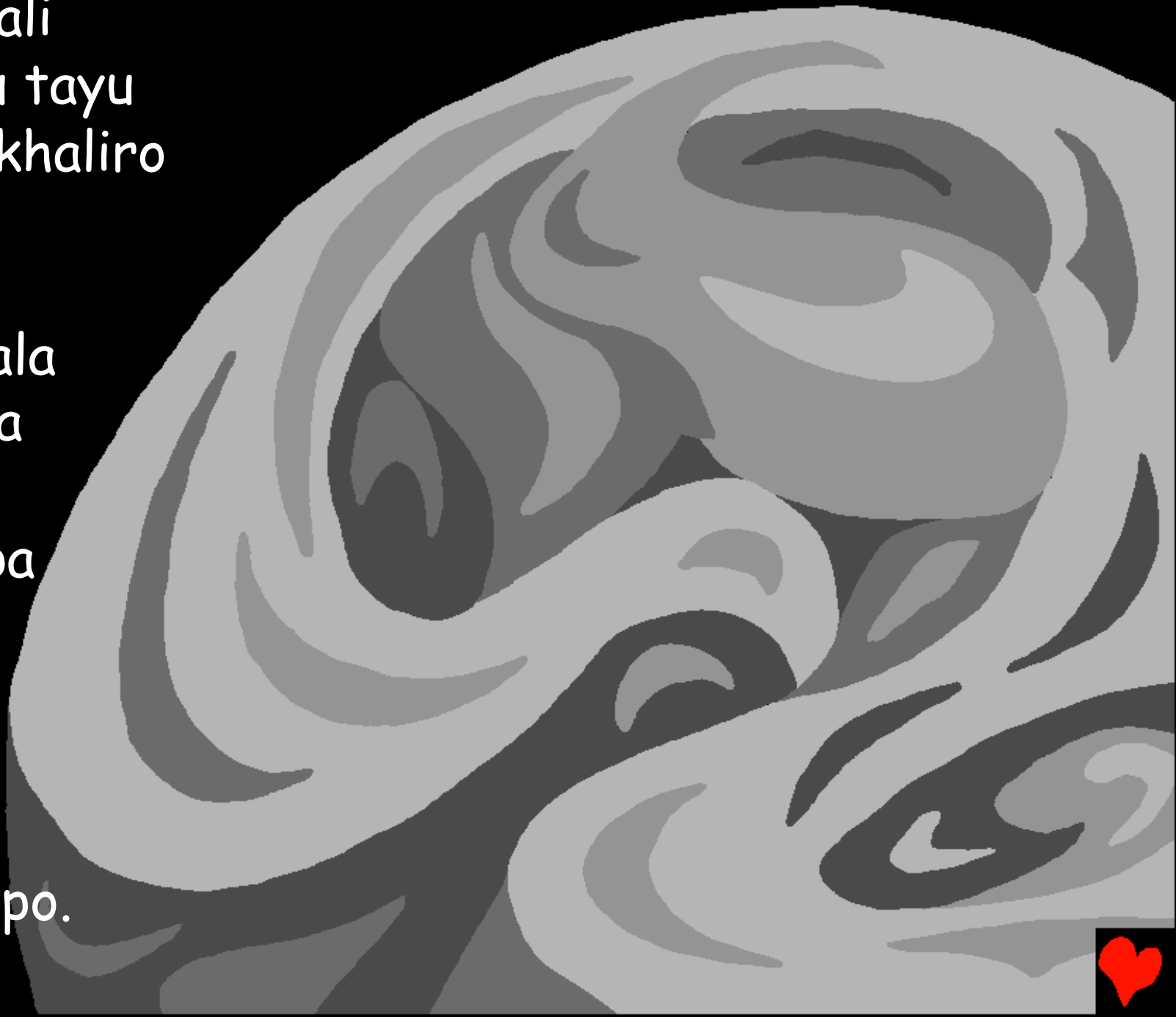
Pacutoma cacamwe, Mulungu  
mbasati achita na chinthu  
chibhozichene, Mulungu akali  
ekha basi. Cukhalico tayu,  
anthu, mbuto cana pinthu.  
Nkhaberetu. Ne  
chieza ne chidhima.  
Ne pansi ne cuzulu.  
Ne zulo ne manguana.  
Cukhali Mulungu  
ekha basi, Iye nkhabe  
matomero. Bhuca  
pepo Mulungu atoma  
basa yache!



Pacutoma Mulungu achita  
cuzulu na pansu.



Zico ikhali  
napinthu tayu  
ne namakhaliro  
adhidhi.  
Chidima  
chicakhala  
pazulu pa  
djyenje.  
Natenepa  
Mulungu  
alonga.  
Lecani  
chieza  
chikhalepo.



Chiedza chaoneca. Mulungu athula chiedza masicati,  
chidhima Iye athulambo Masicu. Akhali machibhese  
na maulo a nsicu yacutoma.



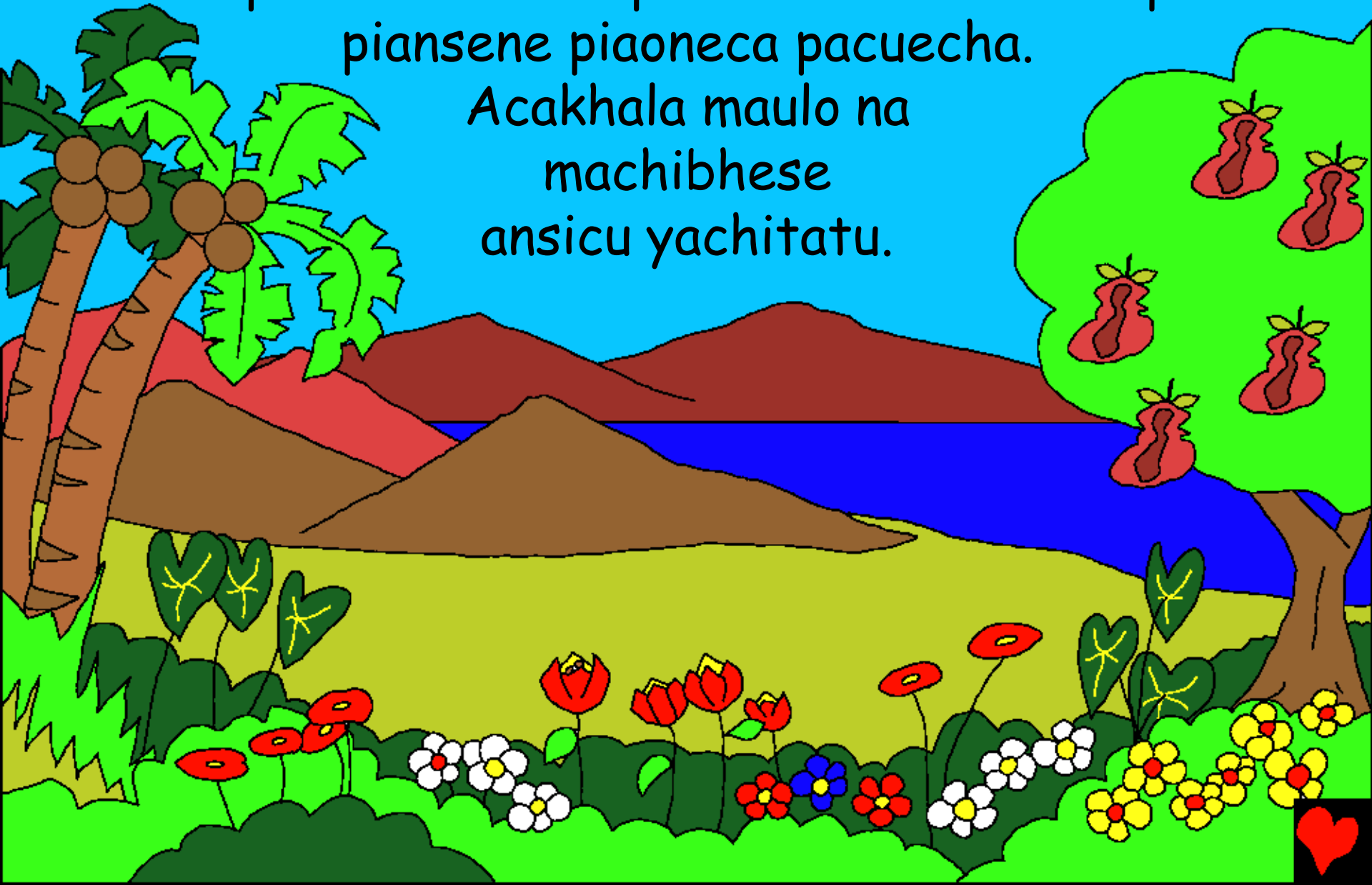


Pa nsicu yachiwiri, Mulungu abweresa mazi ambhara,  
na anhanza na anchigorobheza muaculongeca pa zico  
yapansi. Pa nsico yachitatu, Mulungu alonga, lecani  
mataca acuma akhalepo. Natenepa piachiticadhi.



Mulungu apasambo ntemo cuna mauzu, maluwa, miti  
na pithunduzi cuti pionekembo. Natenepa  
piansene piaoneca pacuecha.

Acakhala maulo na  
machibhese  
ansicu yachitatu.



Buluca pepo Mulungu achita  
zuwa, mwezi na nhenhezi  
zizinji zacuti nkhabe munthu  
bhozi anacuanisa cuzilenguesa.  
Akhali maulo na machibhese  
ansicu yachinai.



Pisicua pia mbhara,  
nhama zamazi na mbalame  
picakhala piacutowera pamaso  
pamulungu. Pansicu yachichanu  
Iye Mulungu achita piansene  
pinafamba hmazi, nhama  
ziculu na zinkinkiti, mbalame  
ntundu zansene. Mulungu  
achita ntundu wansene  
wa nhama zamazi cuti  
azaze mazi ansene apazico,  
nambalamembo zansene  
zanzulu cuti zisanzaye pansu  
na nzulu. Akhali maulo na  
machibhese ansicu yachichanu.



Bhuluca pepo, Mulungu alonga pina. Iye ati,  
"Lecani zico ibwerese pisicua piamaso, pinapuma ..."  
Mitundu yonsene yapinhama piapanse, pinacambaza  
na pinamburuca piaoneca hmaso mbipipuma.  
Cuaonecambo pinhama piculu pinatekenhesa  
mataca ninga ankhonda nzoo na anangombo  
anagoswa. Mabhongue asanthopwe na ankhonda  
nvuu. Aonekerambo ankhonda mphalapala, mbizi,  
nhalugwe na nkhalamu. Mitundu yansene yapinhama  
yachitwa na Mulungu nsicu ineyo.



Maulo na machibhese acakhala  
ansicu yachithanthatu.



Mulungu achitambo pinango pizinji pansicu  
yachithanthatu pinthu piacucuzua. Natenepa  
pinthu piansene picali ndondowe cuna munthu. Mucali  
napiacudya na pinhama hmunda mule  
cuna munthu. Pepale Mulungu  
alonga, "Lecani Ife tichite  
munthu pa  
chiso Chathu.



Mulekeni iye akhale mbuya wa pinthu piansene  
piapazico yapansi" NATENEPA MULUNGU ACHITA  
MUNTHU PA CHISO CHACHE; PACHISO CHACHE  
MULUNGU IYE ACHITA  
MUNTHU ...





Mulungu alonga  
cuna Adamu.  
"Dya piaco  
piansene  
pinafunewe  
mumunda.  
Mbwenhe  
cubulikira mumuti  
wacuziwa piadhidhi  
na piacupa usadye  
tayu. Ucadya piamuti  
mwemo unafa."



MBUYA Mulungu alonga, "Sipiadhidhi tayu cuti mamuna akhale ekha. Ndinanchitira mphezeri wache." Mulungu abweresa pinhama piansene cuna

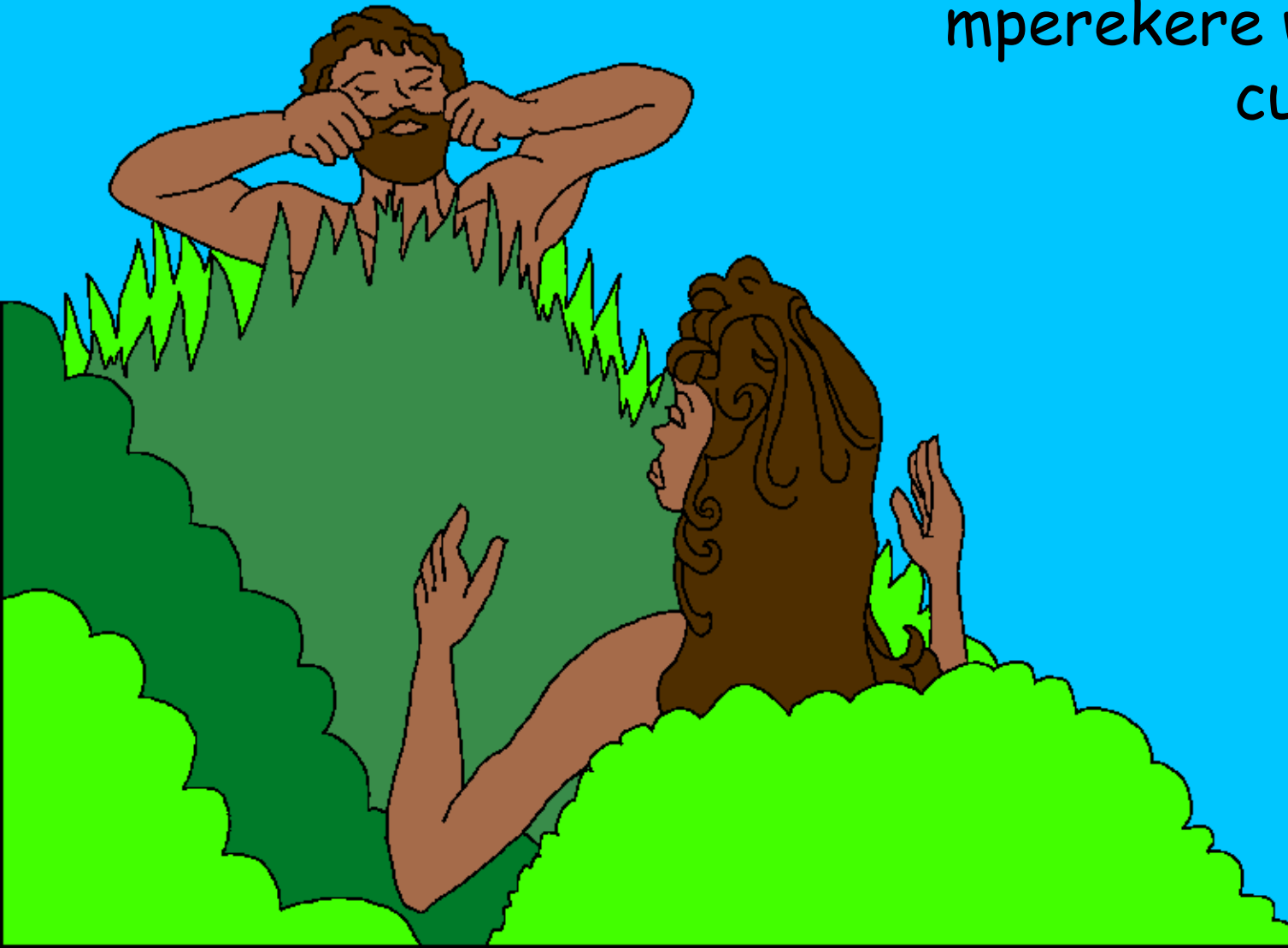
Adamu. Adamu apipasa mazina awo. Iye acadakhala mamuna wacungwala cuti achite tepo.

Mbwenhe pacati papinhama piansene padagumanicambo tayu mphedzeri wacutapira cuna Adamu.



Mulungu agonesa Adamu chitulo chiculu. Mulungu asolola mbavu ya Adamu mbagona, mulungu achita nayo nkazi. Nkazi unoyo adachita Mulungu akhali

mperekere wacucwana cuna Adamu.



Mulungu achita pinthu piansene pansicu zitanthatu. Natepa Mulungu acombolera nsicu yachinomwe mbayichita nsicu yacupuma. Mu Munda wa Eden, Adamu na nkazache Eva acakhala nacumerwa cwacucwana pacuvera Mulungu. Mulungu acali MBUYA, mpasi na chamuali wao.



Pidhachita iye Mulungu pinthu piansene  
Chithancano chafala yaMulungu, Bibilia,

Chisaonecwa mu

Genesis 1-2

"Mapitiro aMafala Anu asapasa chieza."  
Salmu 119:130



CUNKHOMO



Chithancano ichi cha muBuku chisatipanga na pia Mulungu wathu wanculu adhatichita ife, Mulungu Ule anafuna cuti iwe umuziwe.

Mulungu asapiziwa cuti ife tachita pinthu piacuipa, pire pinachemera Iye picadho. Mbhairo wapicadho ndi cufa, mbwenhe Mulungu asacufuna piculupiene, Iye atuma Mwana Wache mbhoziene bhasi, Yesu, cuti afe paNtanda, mbaoneswa nhatwa nathangwi yapicadho piaco. Bhuca pepo Yesu akhala pina maso mbabwerera cunhumba Cuzulu! Iwe ucantawira Yesu mbumpidhiri cuti aculekerere piacuipa piaco, Iye anapichita! Iye anabwera mbakhala muncati mwa iwe chinchino pano, pina, iwe unazakhala na Iye cwenda-na-cwenda.

Khala iwe wapitawira cuti ipi ndipiodhi, longa tenepa cuna Mulungu: Yesu wacufunica, ndatawira cuti Iwe ndiwe Mulungu, mwachitica munthu cuti mufere piacuipa pianga, chinchino imwe muli maso pina. Ndapota, bwerani, mupite muntima mwanga, ndilekerereni madhawa anga, cuti ndikhale na upenhu utswa chinchino pano, pina, nsicu ubhozi ndizakhale na Imwe cwenda na cwenda. Ndiphezeni cuti ndicuvereni pina ndikhale Wanu ninga mwana Wanu. Amen.

Werenga Buku, longa na Mulungu nsicu zansene! Juwau; 3:16

