

Bibilia cuna Anapiana
Anhacupangisa



Cuzulu,
Cunhumba
yacubhalica
ya Mulungu



Anhaculemba: Edward Hughes

Anhacupangisa: Lazarus
Alastair Paterson

Anhacusangula: Sarah S.

Anhcuchinja Mulongero: Sarifo Buramo Cheia

Anhacuphica: Bible for Children
www.M1914.org

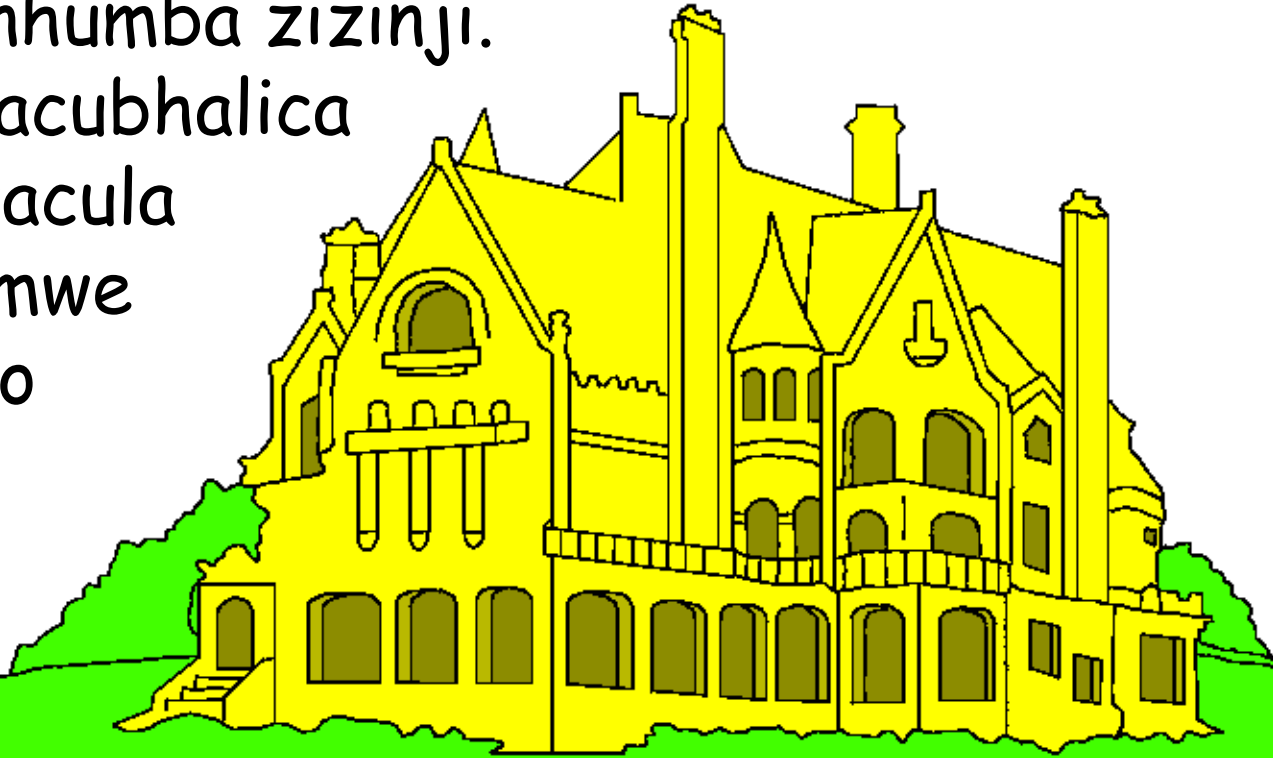
©2020 Bible for Children, Inc.

Lemba apa mulankhulu udhaphatisewe
bhasa pacuchinja chithancano ichi.

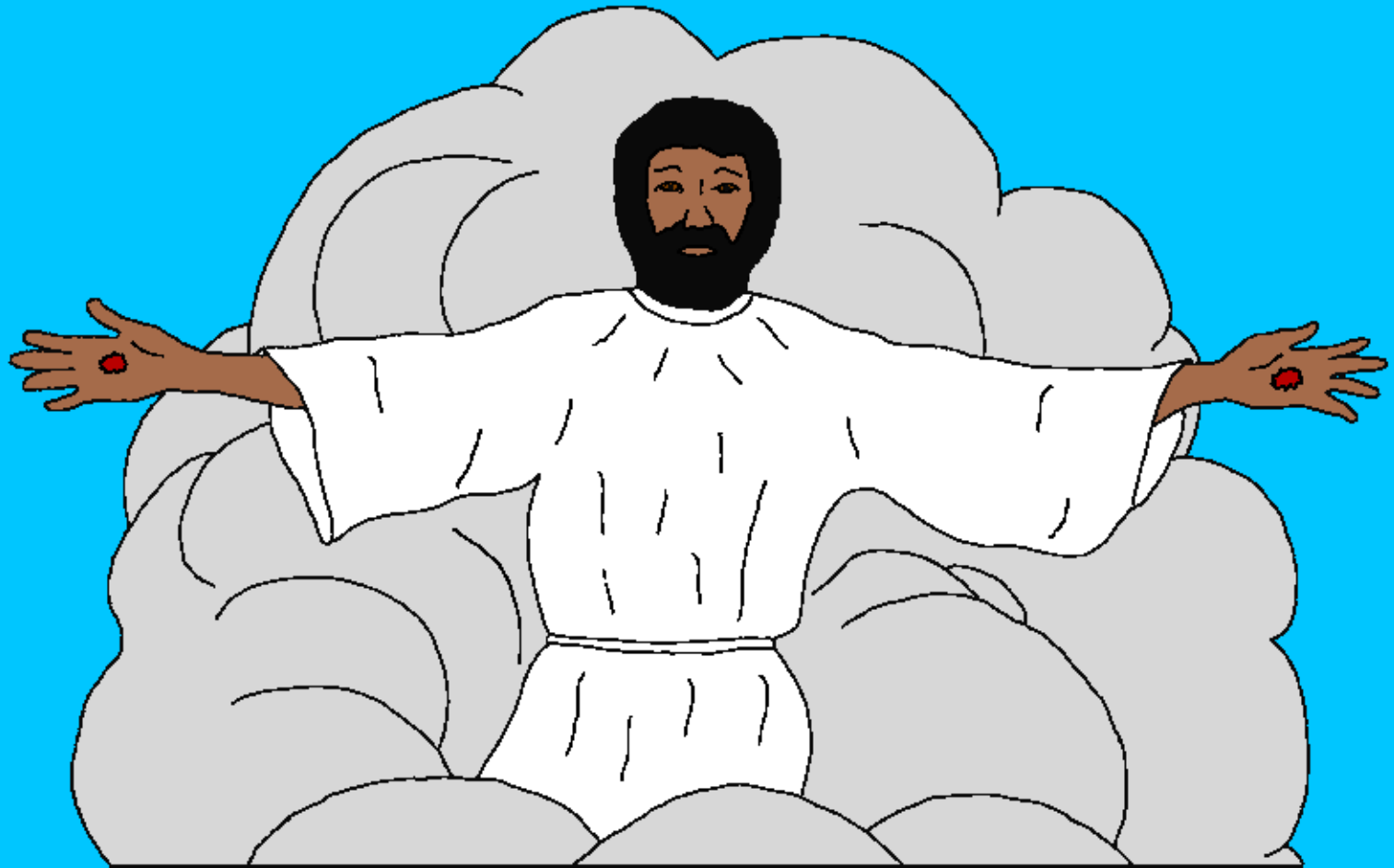


Yesu picakhala iye pazico yapansi apanga atewereri
ache na piacuzulu. Iye athula cuzulu zina,
"Cunhumba ya Bhabha Wanga", mbalonga pina
cuti, cueco cuna nhumba zizinji.

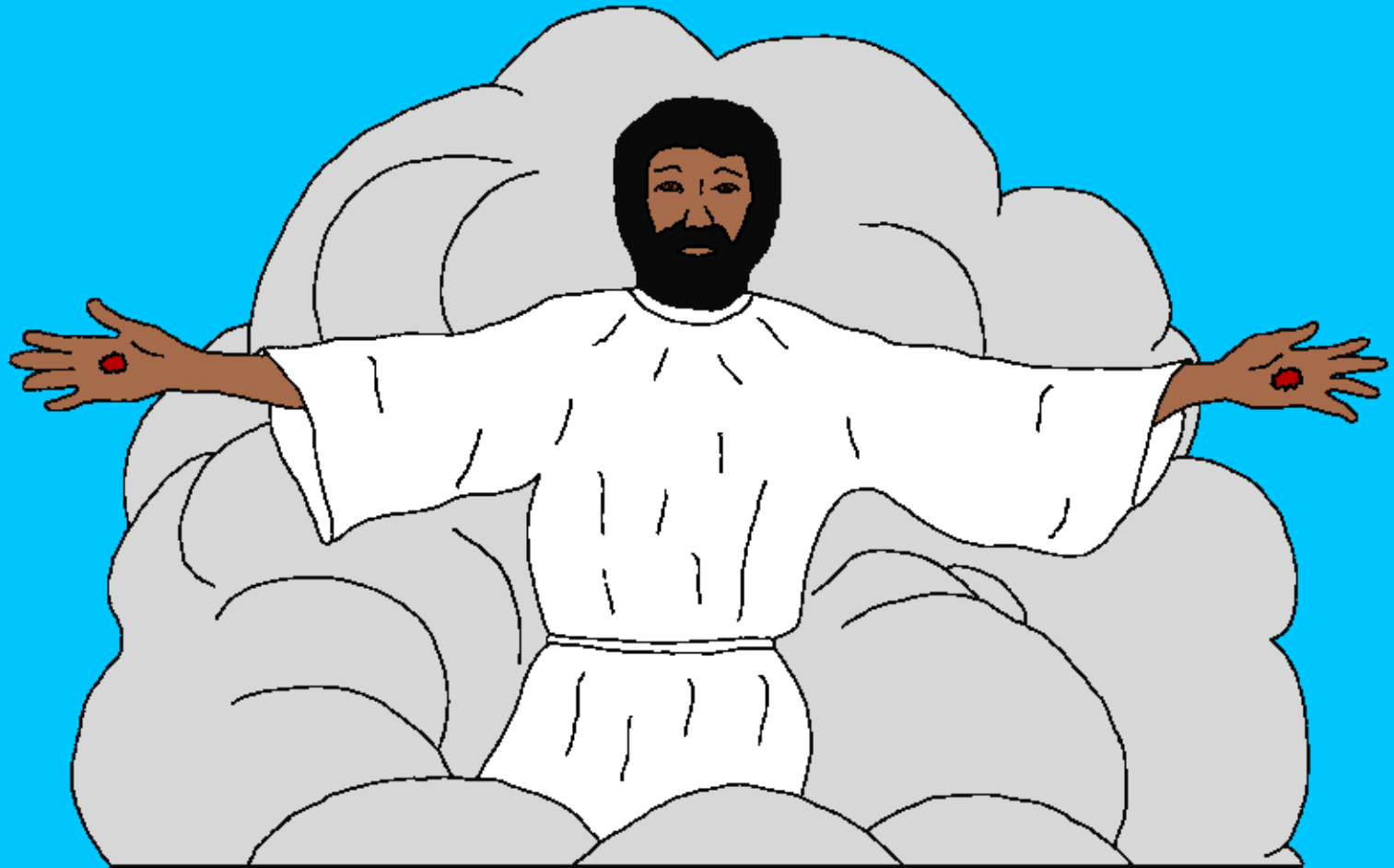
Mbuto ziculu nazacubhalica
zirico. Cuzulu cwacula
nacubhalica cacamwe
cupiringana mbuto
ipi piao yapazico
yapansi.



Yesu alonga, "Ndiri cwenda casasanha mbuto cuna imwe. Ndicaenda casasanha mbuto cuna imwe, ndinabwera pina zacucwatani cuti mukhale naine."



Yesu aenda cuzulu, pidhamala Iye culamuca mwa ale acufa. Picacwira Iye cuzulu, atewereri ache acaona, natenepa macuta acuzulu amphimbira cufikira abhisalica maso mwa atewereri ache.



Cubhulukira pepale cufikira nalero, macristu asanherezera chipikirwa cha Yesu cha cubhwera pina cuza caacwata. Yesu alonga cuti Iye anazabwera mwacututumusa, nkhabhe munthu anazapiziwa. Pinachiticambo tani cuna macristu anafa, Yesu asati abwera? Buku isalonga cuti anafa ale, asaenderatu cakhala na Yesu. Cukhala cunja cwamanungu



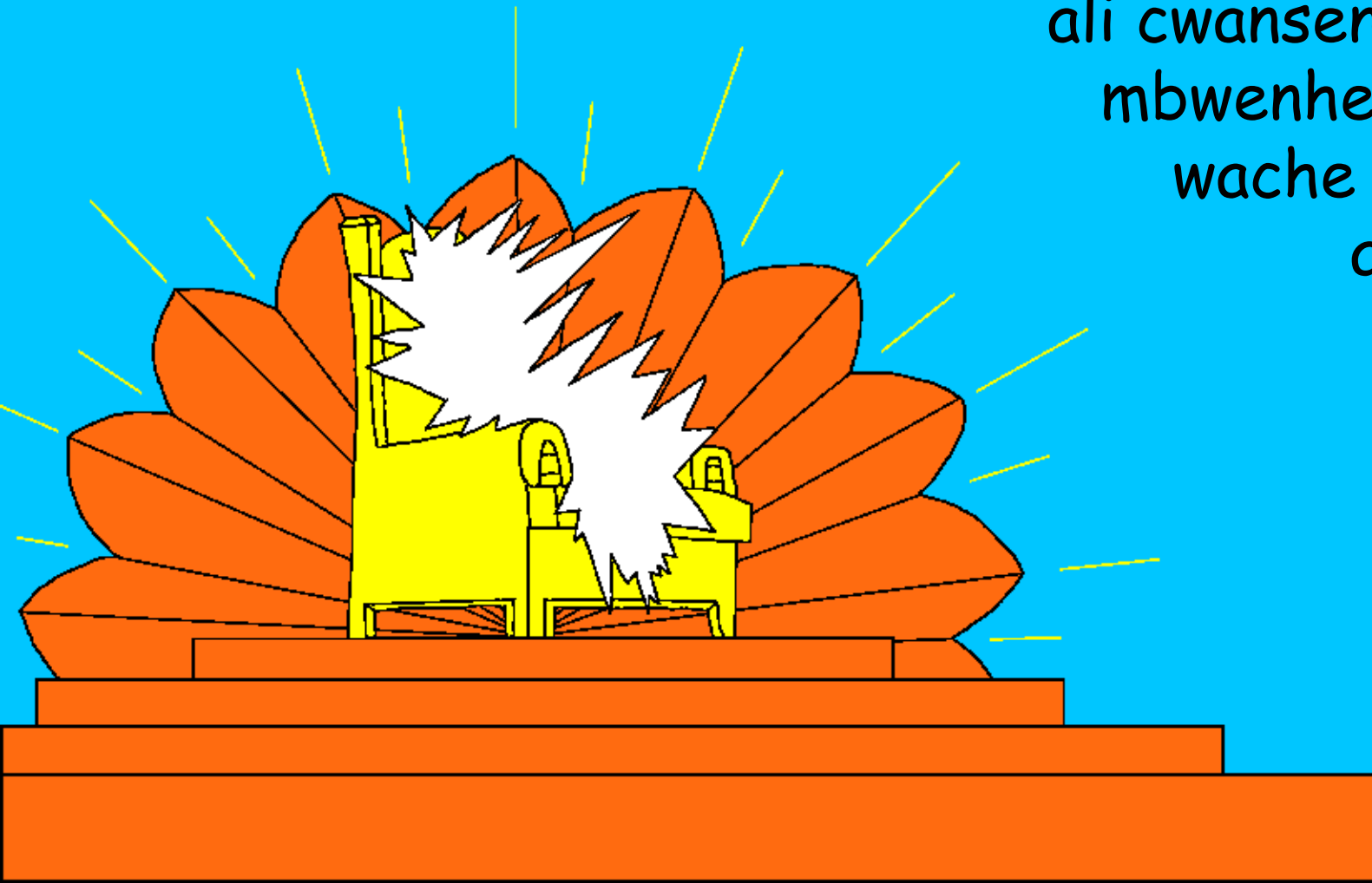
**PACWECHA NA
MBUYA**

ndi cukhala **PACWECHA
NA MBUYA.**

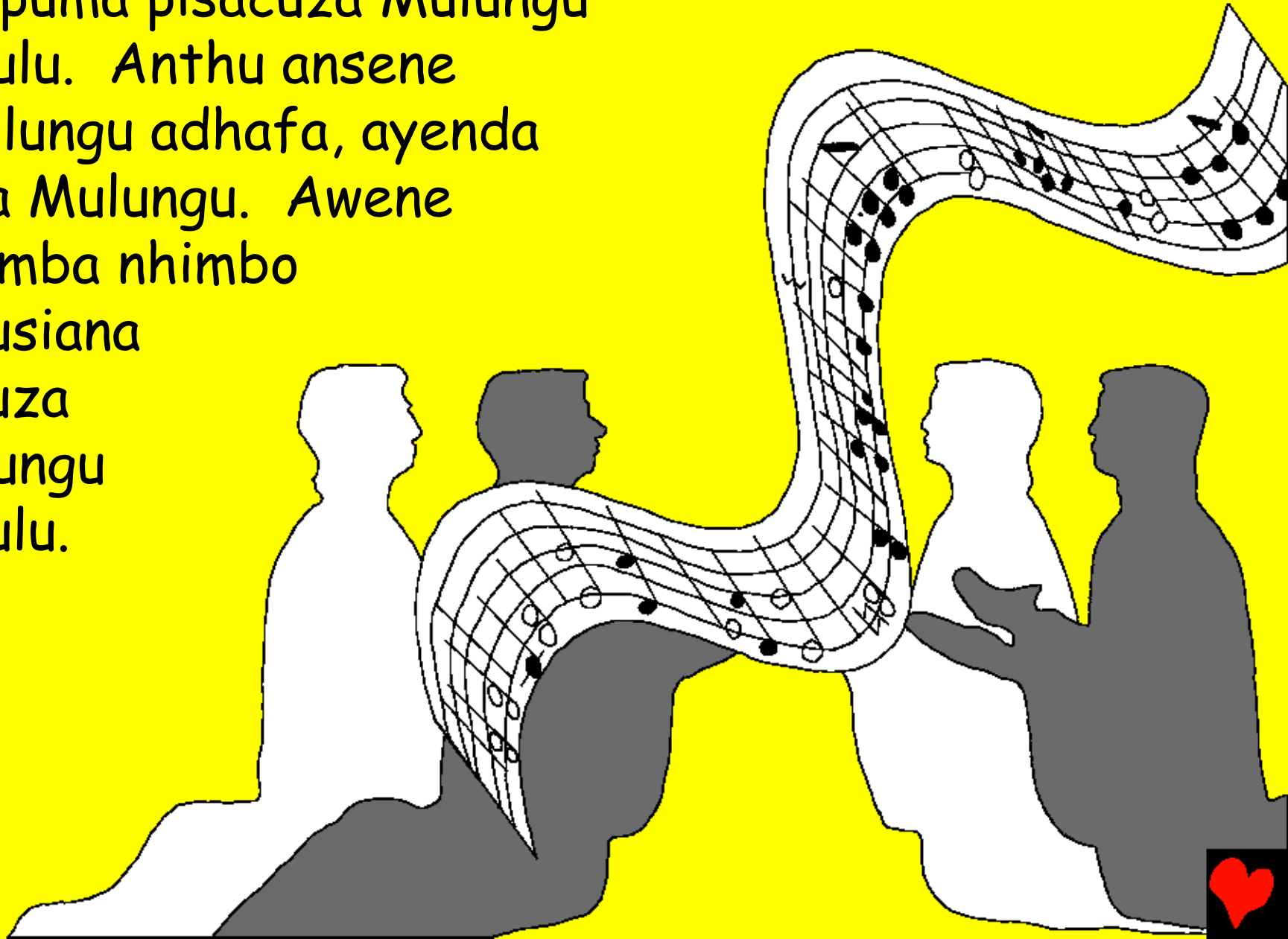


Chioneso, buku yacumapeto ya Bibilia, isatipanga nacubhalica cacamwe cwa cuzulu. Chinthu chiculu chacubhalica cacamwe, na njira yacusiana ndi chacuti, Cuzulu ndi cunhumba yaMulungu. Mulungu

ali cwansenekwene,
mbwenhe mpando
wache Mulungu
ali cweco
Cuzulu.



Ngirosi na pinangombo
pinapuma pisacuzza Mulungu
Cuzulu. Anthu ansene
aMulungu adhafa, ayenda
cuna Mulungu. Awene
asaimba nhimbo
zacusiana
cucuza
Mulungu
cuzulu.

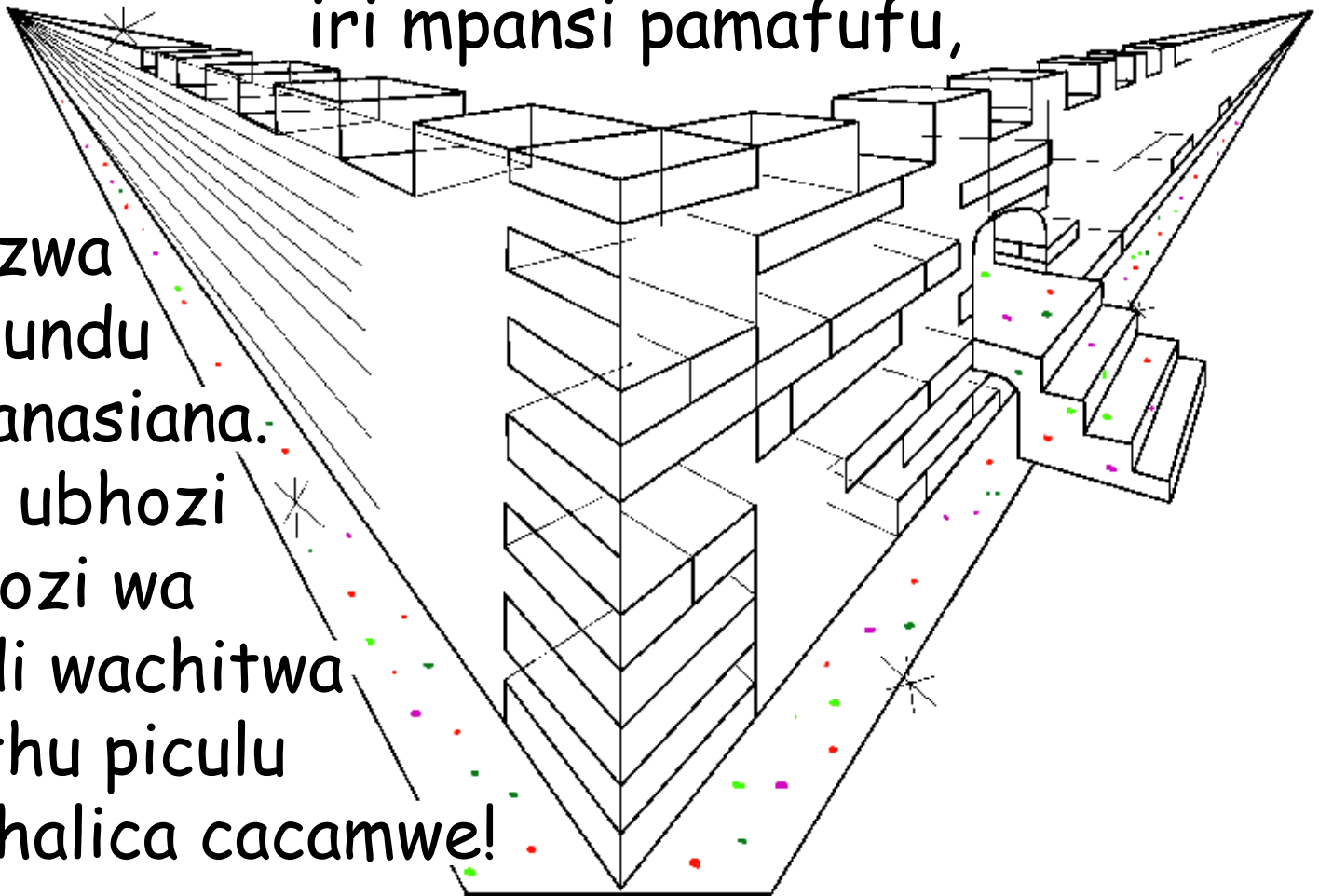


Awa ndi mafala mangasi anhimbo zinaimbiwa Cuzulu:
IYE UNACUZWA THANGWI WATICONONDOLA
CUTIYENDESA CUNA MULUNGU
NA CHIROPA CHACO CHIDHA
YERERA CUNA MAZINDZA
ANSENE, MBUTICHITAMBO
MAMBO NA ANHANSEMBE
CUNA
MULUNGU
WATHU.
(Ap.5:9)

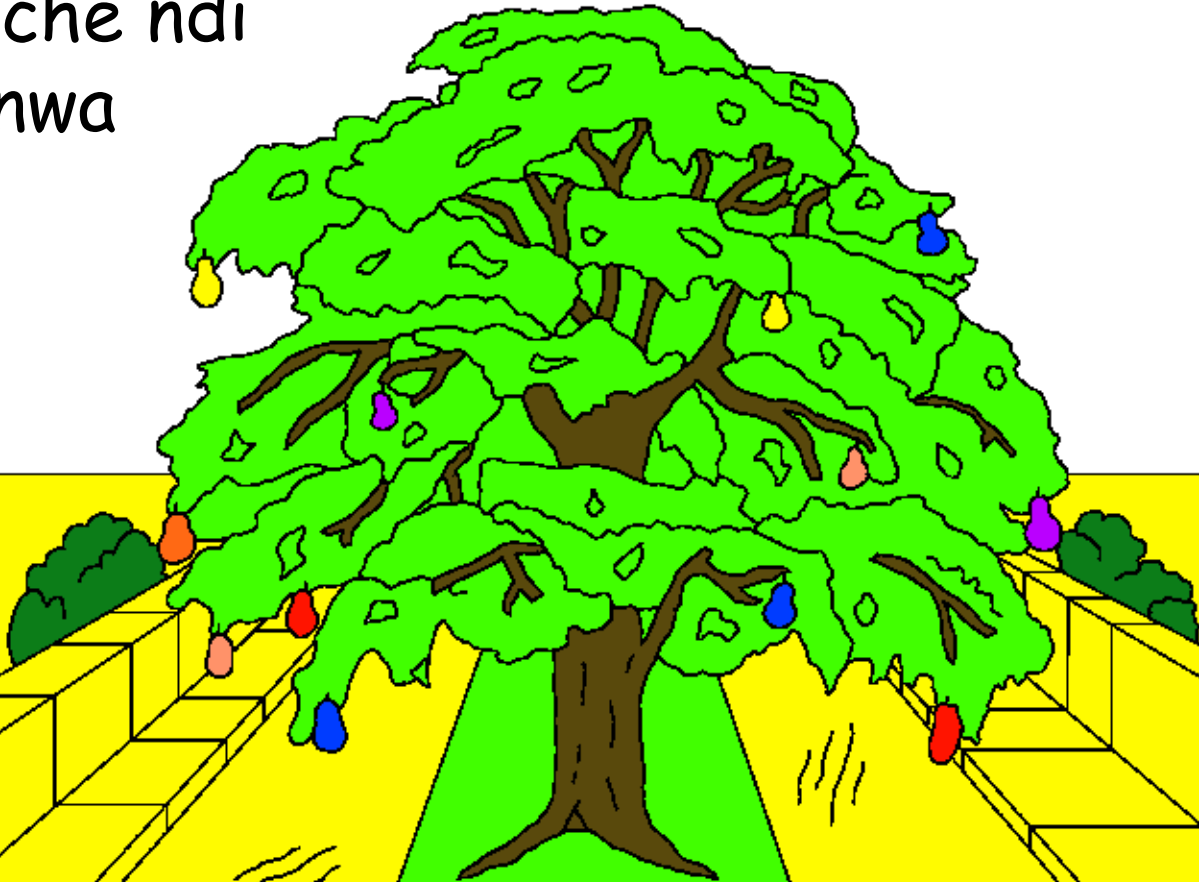


Pasamba yacumalisira ya Bibilia, isalonga tangwi yacuzulu ninga "Jeruzalema Itswa". Ichi ndi iculu cacamwe, namafufu aculapha maningi cunja. Mafufu awa ndi amiyala yadhidhi nayacunhetuca cacamwe. Miyala yacubhalica na ntengo wapazulu cacamwe ndiyo iri mpansi pamafufu,

mbazozwa namintundu yacusianasiana. Nsuwo ubhozi na ubhozi wa thaundi wachitwa na pinthu piculu piacubhalica cacamwe!



Misuwo inere yacubhalica na cuwanga nkhabhe
fungwa tayu. Mbatipite nkati tione... CHII! Cuzulu,
ncati mwache ndimwacubhalica cacamwe. Thaundi
njacumangwa na oro wacusucwa, ninga supeu. Na
njira zache ndi
zacumanwa
na oro
bhasi.

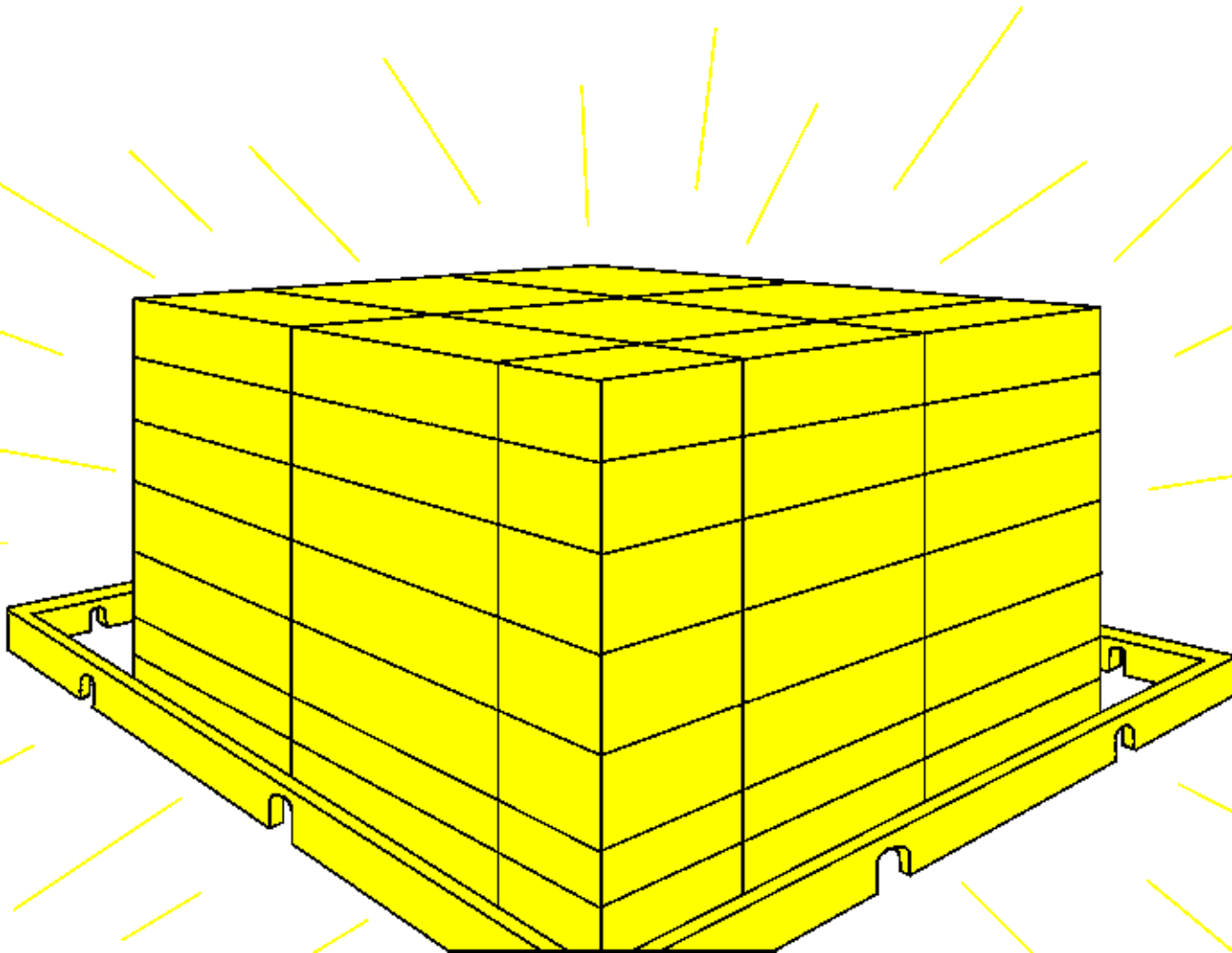


Nhanza yacubhalica, yacuoneca pacwecha ya mazi aupenhu asayerera bhulukira pampando waumambo waMulungu. Cunkhundu cwa nhanza cusaoneca muti waupenhu, udhatomwa cuikhwa muMunda wa Edeni. Muti uyu ndi wacusiana cacamwe na miti inango. Muti uchu usabhala misapo khumi na miwiri yacusiana-siana. Misapo yacusiana-siana mwezi ubhozi na ubhozi.

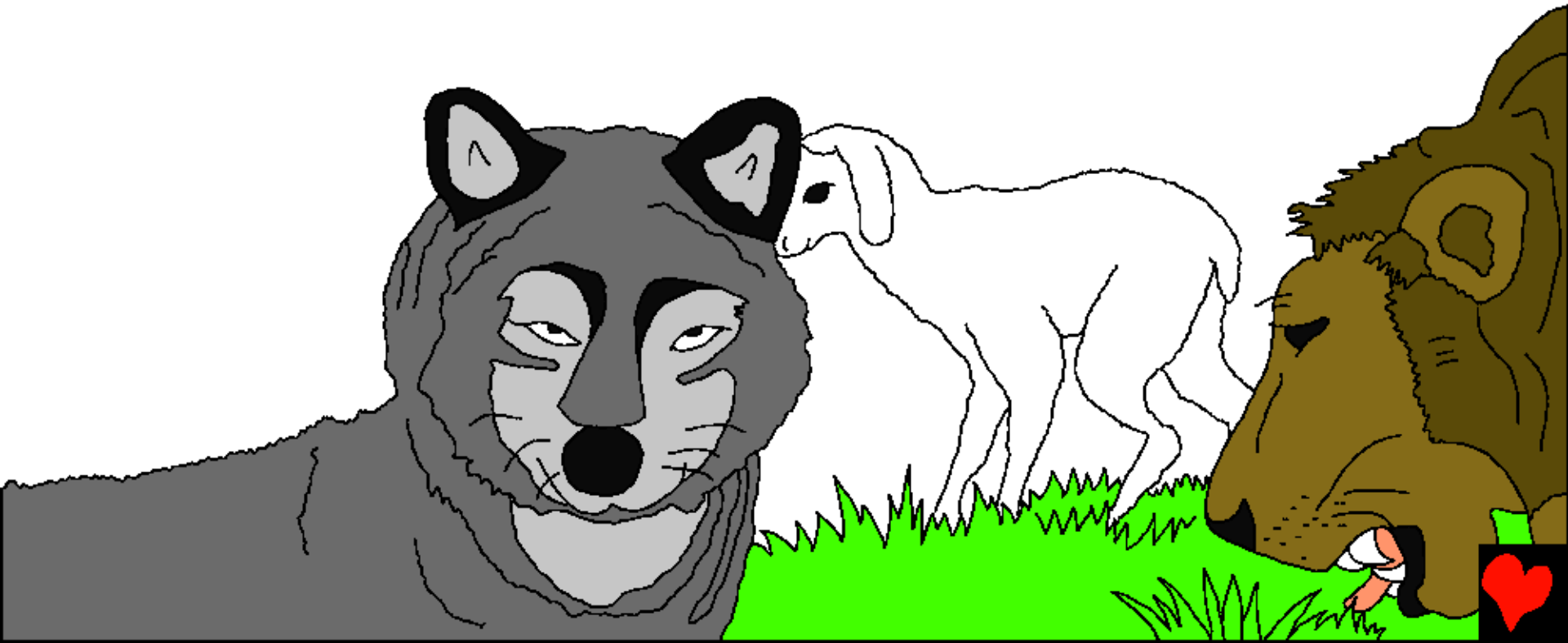
Masamba amuti uchu waupenhu asaphatabhasa pacuwangisa



Cuzulu nkhabhe funica zuwa na mwezi cuti cukhale na chieza. Mbiri yaMulungu yacwana cuti izaze na chieza chiculu cacamwe. Cuzulu nkhabheco masicu. Ndi cwacuchena bhasi.



Napinhamapiene piansene piacuzulu ndi piacusiana.
Pinhama piansene ndiuchamwali mwawo. Mabhinzi na
mabhira asadya sanga ansene. Na pai nkhalamuene
asadyambo sanga bhasi, ninga mbuzi. Mbuya alonga,
"Iwo nkhabhe cuzabhulusa chiropa peno cufudza na
phiri yanga yansene yacuchena."



Ife ticafungula maso mbitiona mwadhidhi, tinaona cuti pana pinthu pinango piasoweca Cuzulu. Mafala acupinda nkhabhe veca tayu. Nkhabhe munthu cuti alicumenhana peno cukhala naucundi.



Cweco Cuzulu nkhabheco nkhabhala zacumanga
misuwo peno misuwo yachiene, thangi Cuzulu
nkhabheco mambava. Cweco nkhabheco nthatawa,
anhacupha anzawo,

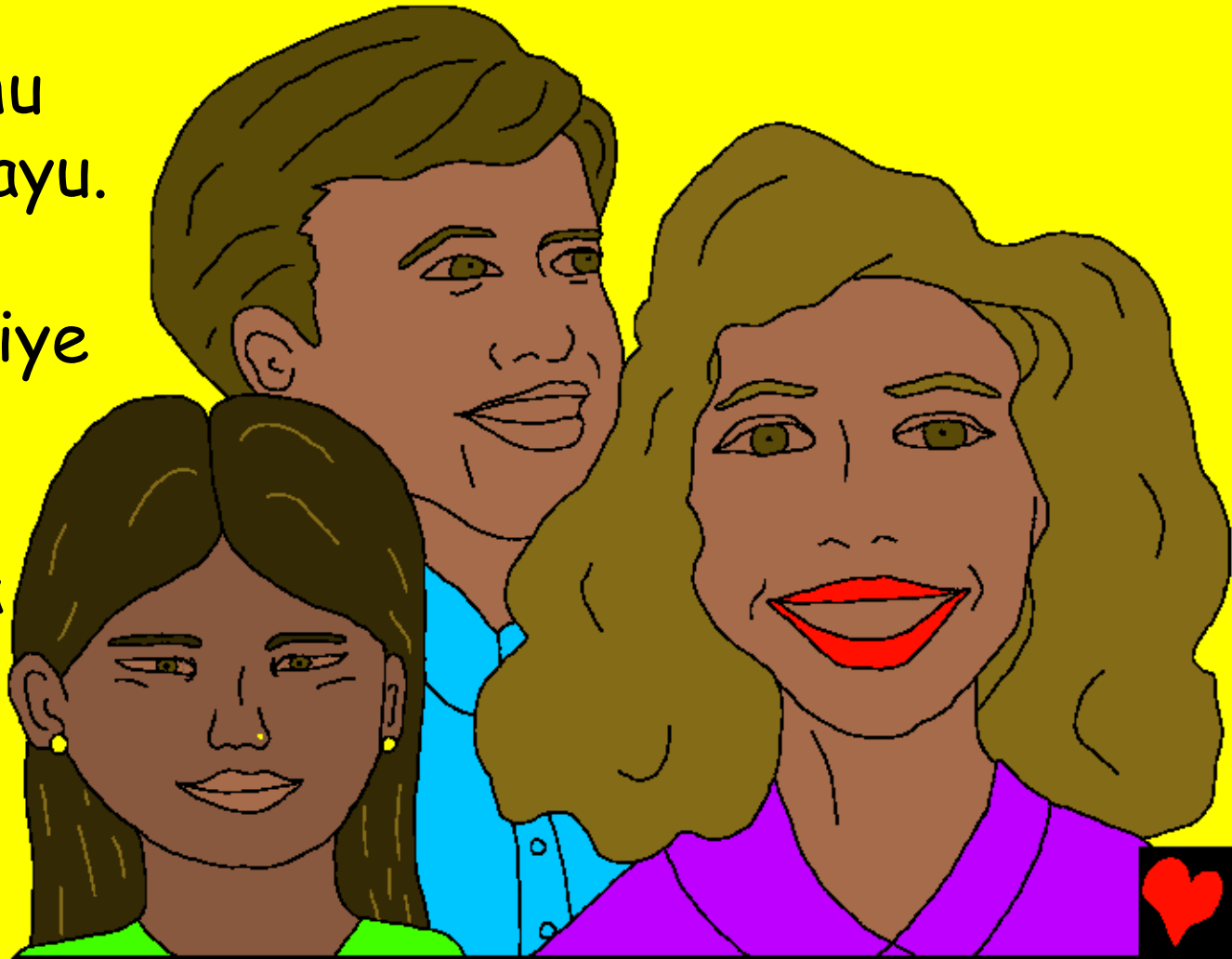
afiti peno
anthu
anango
acuiipa
ntima.
Cweco
Cuzulu
nkhabheco
na ntundu
ubhoziene
wapiacuipa.



Cuzulu na Mulungu
nkhabheco misozi.
Namizizi inango anthu
aMulungu asalira
nathangwi yacuvacupha
cuculu muntima paupenhu
uno wapazico yapansi.
Cuzulu, Mulungu
anazapucusa misozi
ya anthu ansene.



Cuzulu nkhabheco cufa tayu nalini. Anthu aMulungu anazakhala na Mbuya cwenda na cwenda. Cunazakhalave nacuthabhuca tayu, culira cunazamaliratu, nacuvacuphambo cunazaonecave tayu. Nthenda, phwando za anthu zinazaonecave tayu. Anthu nkhabhe cwendave cumasiye tayu. Munthu wansene Cuzulu ali wacucomerwa cwenda na cwenda na Mulungu.



Piadhidhi cacamwe ndi piacuti, Cuzulu ndi cwa aphale na asicana (na anthu aculumbo) ale adhatawira Jesu Cristu ninga mpulumusi wawo pina mbanvesera ninga Mbuya wawo. Cuzulu cuna buku isachemerwa, **BUKU YAUPENHU YABHIRA**. Buku ichi idhazala namazina anthu. Iwe usapiziwa cuti ndi mazina aani ali mubuku inere? Mazina anthu ansene anatambira nacuthemba Yesu.

Codhi iwembo, zina yaco ari mwemule?



Mafala acumalisa amubuku yaMulungu-Bibilia, na thangwi ya Cuzulu ndi cuhemerwa cuculu cacamwe. "Pina, Nzimu na mwanakhode asalonga, 'BWERANI!' Pina, lecani ule anava alonge 'BWERERA!' Pina, leca ule ananhota abwere. Pina, ule anafuna, musie acwate

pezi mazi
aupenhu."

BWERANI!



Cuzulu, Cunhumba yacubhalica ya Mulungu

Chithancano chafala ya Mulungu, Bibilia,

Chisaonecwa mu

Juwau 14; 2 Corintu 5;
Chioneso 4, 21, 22

"Mapitiro aMafala Anu asapasa chieza."
Salmu 119:130



CUNKHOMO



Chithancano ichi cha muBuku chisatipanga na pia Mulungu wathu wanculu adhatichita ife, Mulungu Ule anafuna cuti iwe umuziwe.

Mulungu asapiziwa cuti ife tachita pinthu piacuipa, pire pinachemera Iye picadho. Mbhairo wapicadho ndi cufa, mbwenhe Mulungu asacufuna piculupiene, Iye atuma Mwana Wache mbhoziene bhasi, Yesu, cuti afe paNtanda, mbaoneswa nhatwa nathangwi yapicadho piaco. Bhuca pepo Yesu akhala pina maso mbabwerera cunhumba Cuzulu! Iwe ucantawira Yesu mbumpidhiri cuti aculekerere piacuipa piaco, Iye anapichita! Iye anabwera mbakhala muncati mwa iwe chinchino pano, pina, iwe unazakhala na Iye cwenda-na-cwenda.

Khala iwe wapitawira cuti ipi ndipiodhi, longa tenepa cuna Mulungu: Yesu wacufunica, ndatawira cuti Iwe ndiwe Mulungu, mwachitica munthu cuti mufere piacuipa pianga, chinchino imwe muli maso pina. Ndapota, bwerani, mupite muntima mwanga, ndilekerereni madhawo anga, cuti ndikhale na upenhu utswa chinchino pano, pina, nsicu ubhozi ndizakhale na Imwe cwenda na cwenda. Ndiphezeni cuti ndicuvereni pina ndikhale Wanu ninga mwana Wanu. Amen.

Werenga Buku, longa na Mulungu nsicu zansene! Juwau; 3:16

