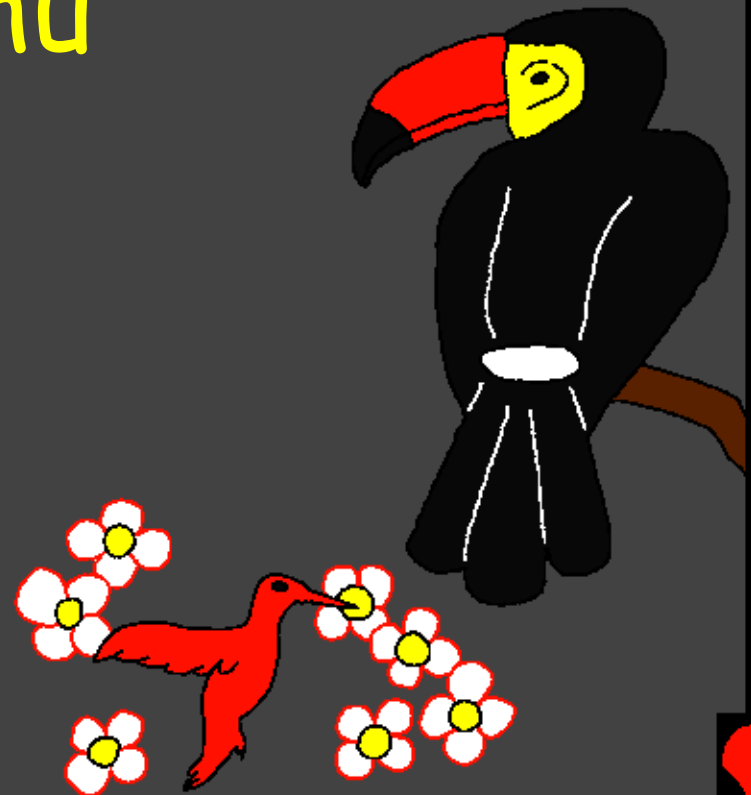
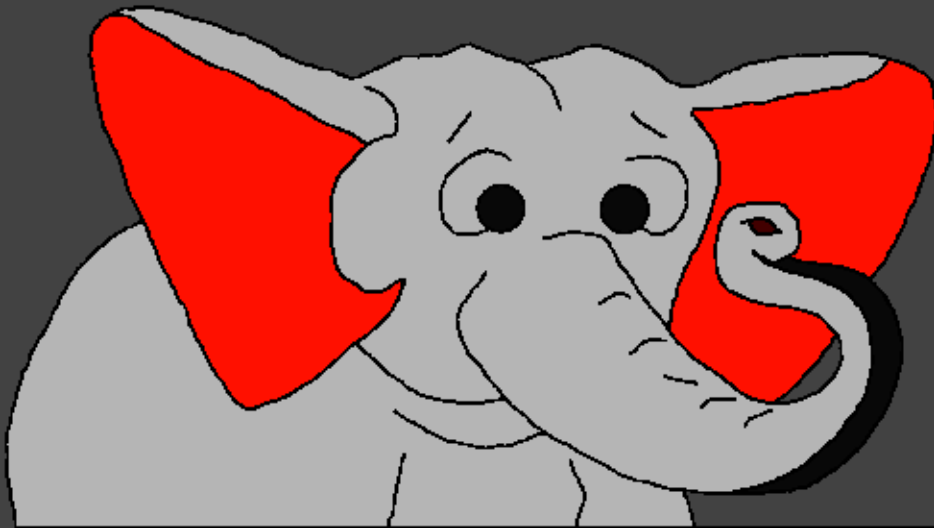


Bibilia cuna Anapiana
Anhacupangisa

Pidhachita iye
Mulungu pinthu
piansene



Anhaculemba: Edward Hughes

Anhacupangisa: Byron Unger; Lazarus
Alastair Paterson

Anhacusangula: Bob Davies; Tammy S.

Anhcuchinja Mulongero: Sarifo Buramo Cheia

Anhacuphica: Bible for Children
www.M1914.org

©2020 Bible for Children, Inc.

Lemba apa mulankhulu udhaphatisewe
bhasa pacuchinja chithancano ichi.



Mbani adhatichita ife? Buku yamulungu, Mafala ache
Mulungu, asalonga cuti ntundu wamunthu watoma tani.
Cale, cale, Mulungu achita munthu wacutoma natenepa,
ampasa zina ya Adamu. Mulungu achita Adamu
cubulukira na fumbi yampansi. Padhampumira
Iye Mulungu cuna Adamu, iye akhala
maso. Adamu azaoneca
ekha mu munda
cachemerwa
Eden.



Mulungu mbasati achita Adamu tayu, Iye achita zico yacubhalica yacuzala na pinthu piadhidhi. Pankiti na pankiti Mulungu achita mbuto dzadhidhi cacamwe, maluwa acusianasiana, miti yaculapha, mbalame na piansene pinthu pinamburuca, pinhama pinafamba pansi. Andedhi, Mulungu achita pinthu

piansene piri
nzico lero.



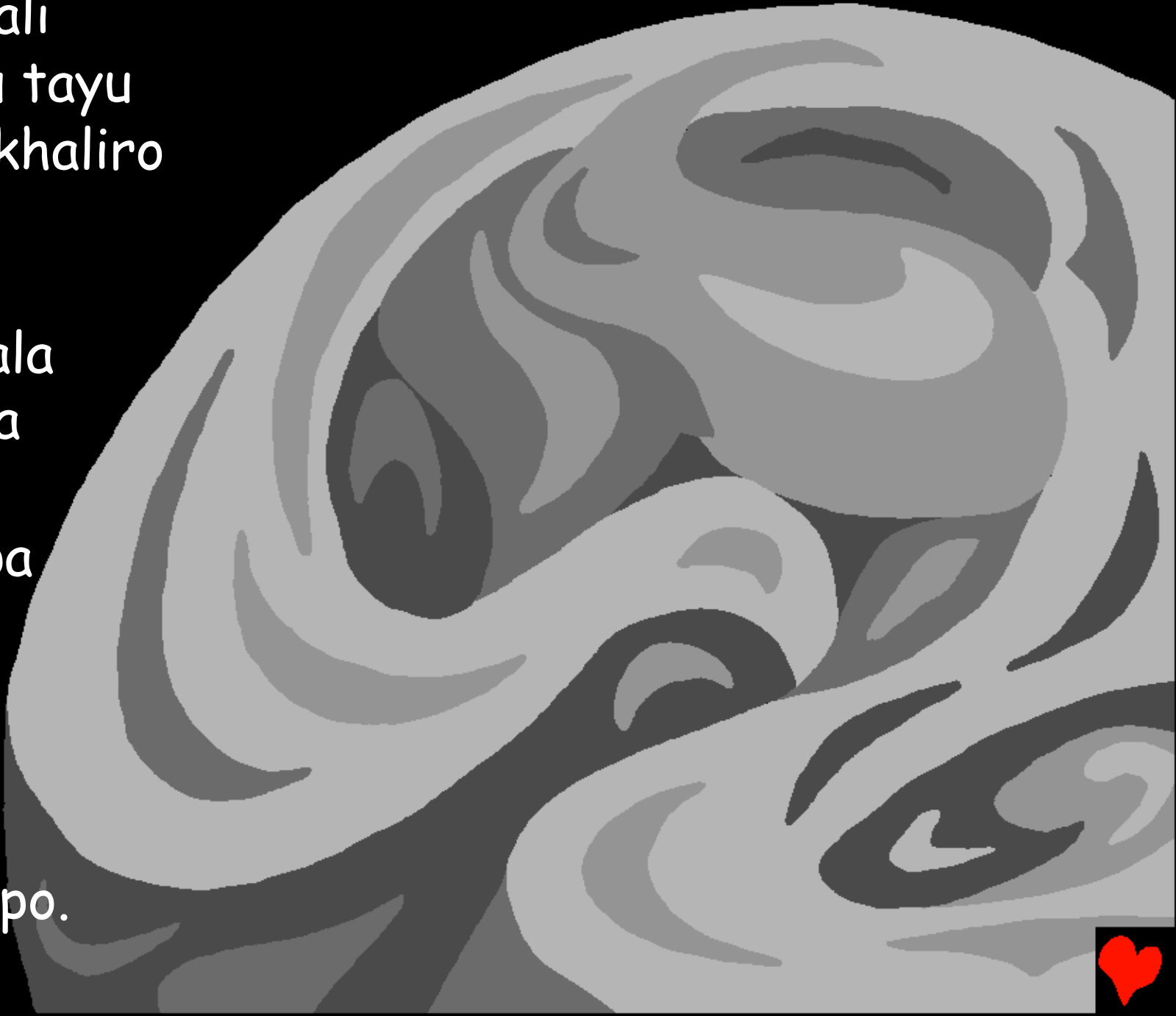
Pacutoma cacamwe, Mulungu
mbasati achita na chinthu
chibhozichene, Mulungu akali
ekha basi. Cukhalico tayu,
anthu, mbuto cana pinthu.
Nkhaberetu. Ne
chieza ne chidhima.
Ne pansi ne cuzulu.
Ne zulo ne manguana.
Cukhali Mulungu
ekha basi, Iye nkhabe
matomero. Bhuca
pepo Mulungu atoma
basa yache!



Pacutoma Mulungu achita
cuzulu na pansu.



Zico ikhali
napinthu tayu
ne namakhaliro
adhidhi.
Chidima
chicakhala
pazulu pa
djyenje.
Natenepa
Mulungu
alonga.
Lecani
chieza
chikhalepo.



Chiedza chaoneca. Mulungu athula chiedza masicati,
chidhima Iye athulambo Masicu. Akhali machibhese
na maulo a nsicu yacutoma.

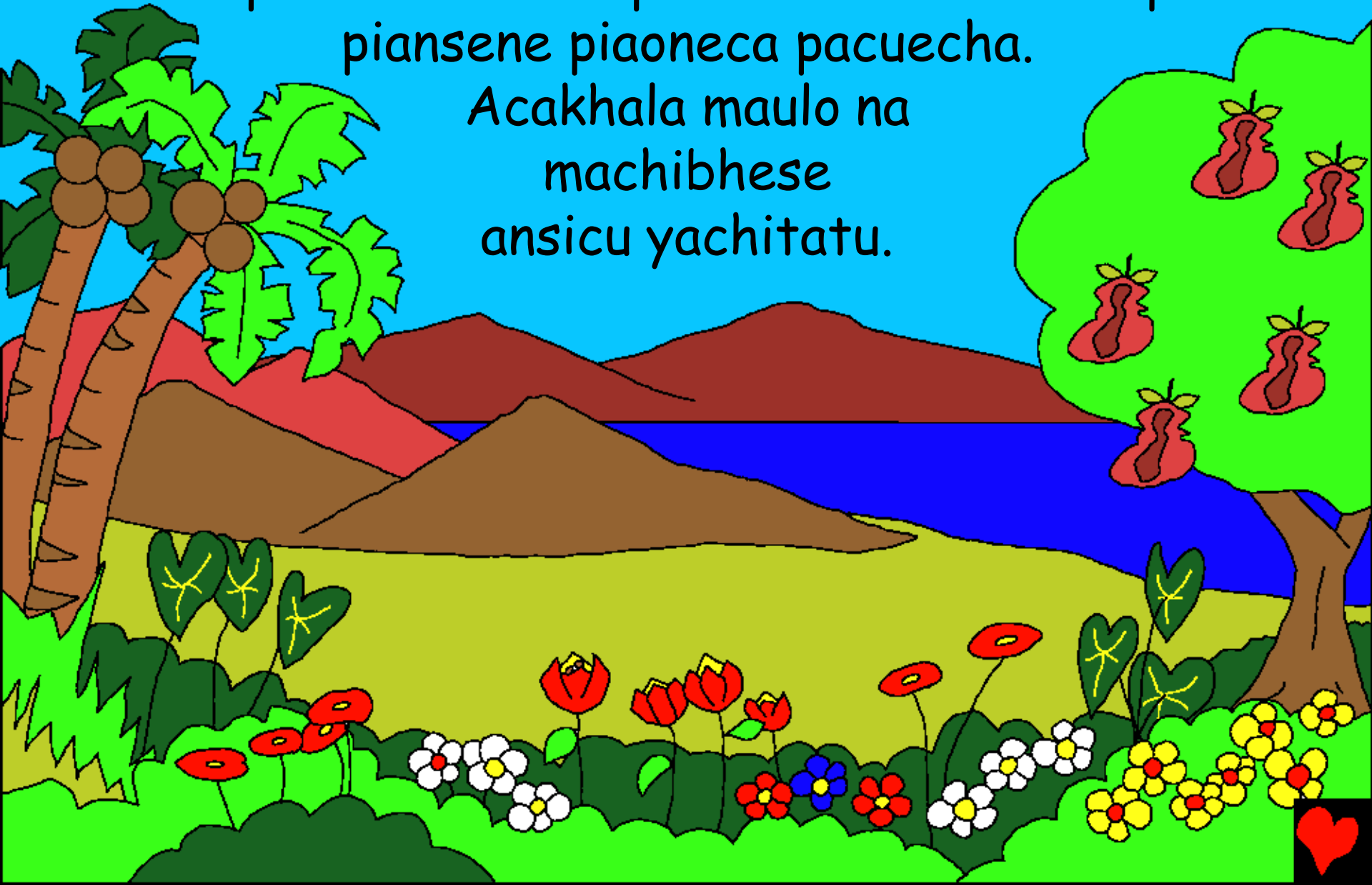


Pa nsicu yachiwiri, Mulungu abweresa mazi ambhara,
na anhanza na anchigorobheza muaculongeca pa zico
yapansi. Pa nsico yachitatu, Mulungu alonga, lecani
mataca acuma akhalepo. Natenepa piachiticadhi.



Mulungu apasambo ntemo cuna mauzu, maluwa, miti
na pithunduzi cuti pionekembo. Natenepa
piansene piaoneca pacuecha.

Acakhala maulo na
machibhese
ansicu yachitatu.



Buluca pepo Mulungu achita
zuwa, mwezi na nhenhezi
zizinji zacuti nkhabe munthu
bhozi anacuanisa cuzilenguesa.
Akhali maulo na machibhese
ansicu yachinai.



Pisicua pia mbhara,
nhama zamazi na mbalame
picakhala piacutowera pamaso
pamulungu. Pansicu yachichanu
Iye Mulungu achita piansene
pinafamba hmazi, nhama
ziculu na zinkinkiti, mbalame
ntundu zansene. Mulungu
achita ntundu wansene
wa nhama zamazi cuti
azaze mazi ansene apazico,
nambalamembo zansene
zanzulu cuti zisanzaye pansu
na nzulu. Akhali maulo na
machibhese ansicu yachichanu.



Bhuluca pepo, Mulungu alonga pina. Iye ati,
"Lecani zico ibwerese pisicua piamaso, pinapuma ..."
Mitundu yonsene yapinhama piapanse, pinacambaza
na pinamburuca piaoneca hmaso mbipipuma.
Cuaonecambo pinhama piculu pinatekenhesa
mataca ninga ankhonda nzoo na anangombo
anagoswa. Mabhongue asanthopwe na ankhonda
nvuu. Aonekerambo ankhonda mphalapala, mbizi,
nhalugwe na nkhalamu. Mitundu yansene yapinhama
yachitwa na Mulungu nsicu ineyo.



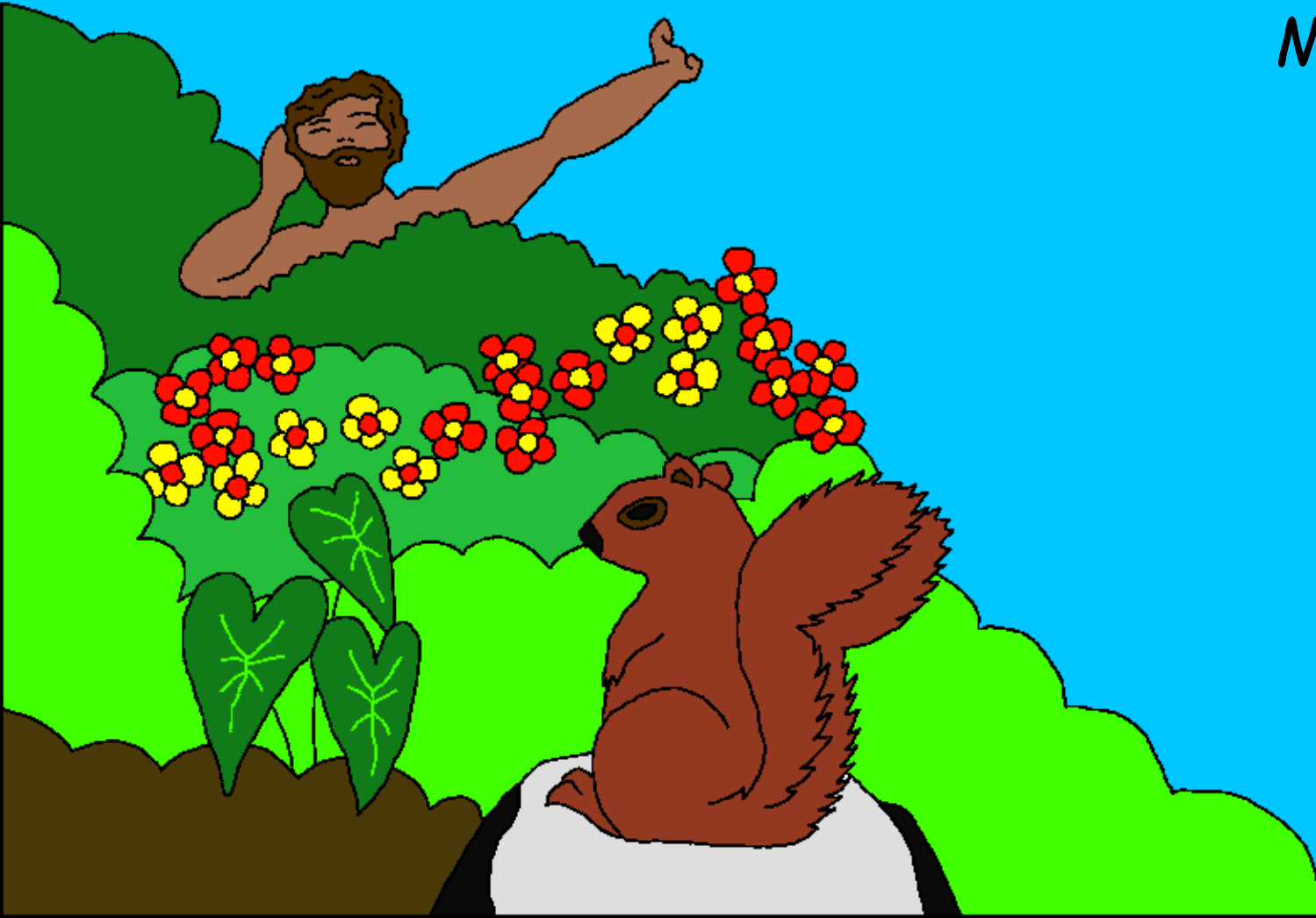
Maulo na machibhese acakhala
ansicu yachithanthatu.



Mulungu achitambo pinango pizinji pansicu
yachithanthatu pinthu piacucuzua. Natenepa
pinthu piansene picali ndondowe cuna munthu. Mucali
napiacudya na pinhama hmunda mule
cuna munthu. Pepale Mulungu
alonga, "Lecani Ife tichite
munthu pa
chiso Chathu.



Mulekeni iye akhale mbuya wa pinthu piansene
piapazico yapansi" NATENEPA MULUNGU ACHITA
MUNTHU PA CHISO CHACHE; PACHISO CHACHE
MULUNGU IYE ACHITA
MUNTHU ...



Mulungu alonga
cuna Adamu.
"Dya piaco
piansene
pinafunewe
mumunda.
Mbwenhe
cubulikira mumuti
wacuziwa piadhidhi
na piacupa usadye
tayu. Ucadya piamuti
mwemo unafa."



MBUYA Mulungu alonga, "Sipiadhidhi tayu cuti mamuna akhale ekha. Ndinanchitira mphezeri wache." Mulungu abweresa pinhama piansene cuna

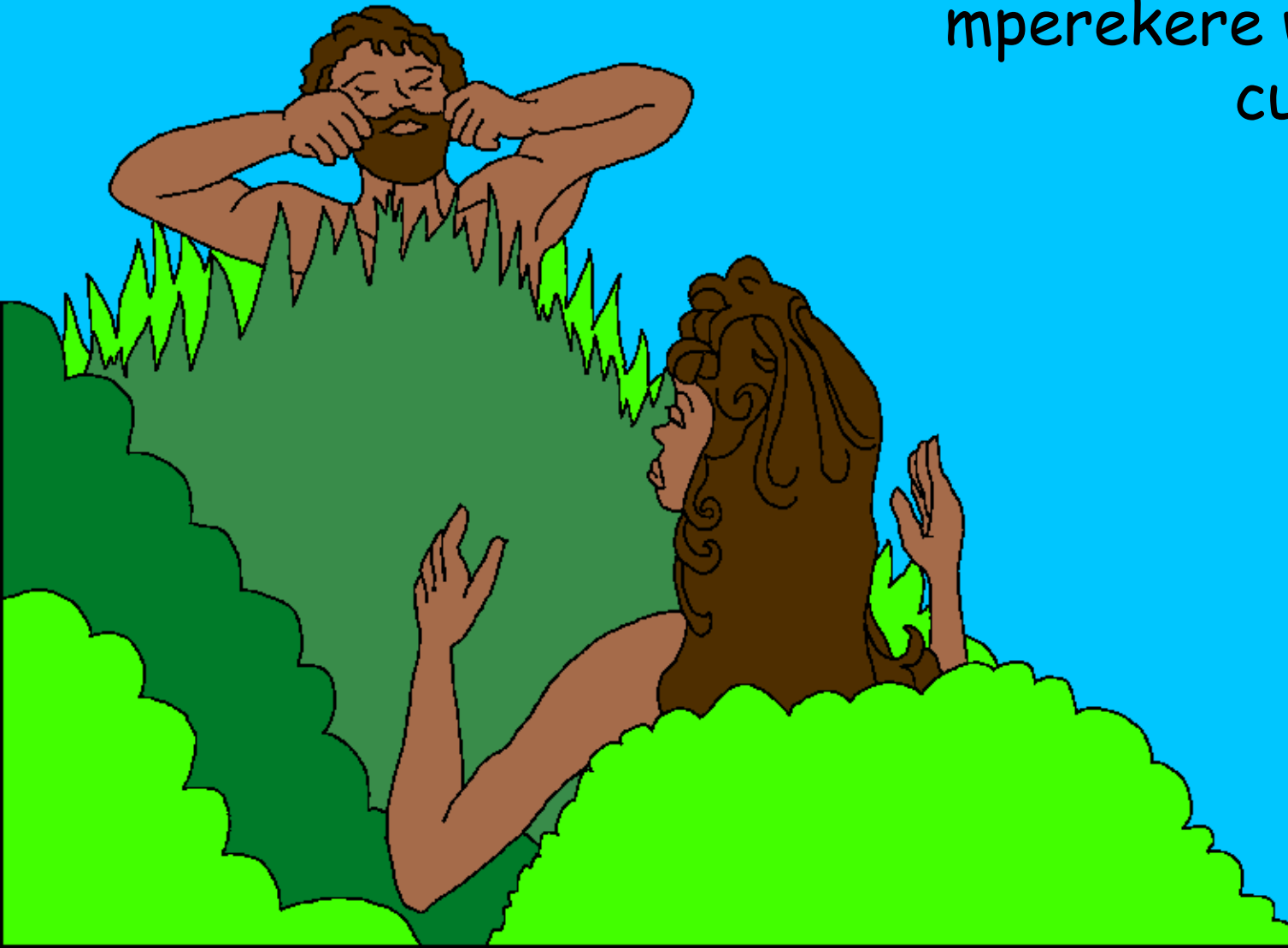
Adamu. Adamu apipasa mazina awo. Iye acadakhala mamuna wacungwala cuti achite tepo.

Mbwenhe pacati papinhama piansene padagumanicambo tayu mphedzeri wacutapira cuna Adamu.



Mulungu agonesa Adamu chitulo chiculu. Mulungu asolola mbavu ya Adamu mbagona, mulungu achita nayo nkazi. Nkazi unoyo adachita Mulungu akhali

mperekere wacucwana cuna Adamu.



Mulungu achita pinthu piansene pansicu zitanthatu. Natepa Mulungu acombolera nsicu yachinomwe mbayichita nsicu yacupuma. Mu Munda wa Eden, Adamu na nkazache Eva acakhala nacumerwa cwacucwana pacuvera Mulungu. Mulungu acali MBUYA, mpasi na chamuali wao.



Pidhachita iye Mulungu pinthu piansene
Chithancano chafala yaMulungu, Bibilia,

Chisaonecwa mu

Genesis 1-2

"Mapitiro aMafala Anu asapasa chieza."
Salmu 119:130



CUNKHOMO



Chithancano ichi cha muBuku chisatipanga na pia Mulungu wathu wanculu adhatichita ife, Mulungu Ule anafuna cuti iwe umuziwe.

Mulungu asapiziwa cuti ife tachita pinthu piacuipa, pire pinachemera Iye picadho. Mbhairo wapicadho ndi cufa, mbwenhe Mulungu asacufuna piculupiene, Iye atuma Mwana Wache mbhoziene bhasi, Yesu, cuti afe paNtanda, mbaoneswa nhatwa nathangwi yapicadho piaco. Bhuca pepo Yesu akhala pina maso mbabwerera cunhumba Cuzulu! Iwe ucantawira Yesu mbumpidhiri cuti aculekerere piacuipa piaco, Iye anapichita! Iye anabwera mbakhala muncati mwa iwe chinchino pano, pina, iwe unazakhala na Iye cwenda-na-cwenda.

Khala iwe wapitawira cuti ipi ndipiodhi, longa tenepa cuna Mulungu: Yesu wacufunica, ndatawira cuti Iwe ndiwe Mulungu, mwachitica munthu cuti mufere piacuipa pianga, chinchino imwe muli maso pina. Ndapota, bwerani, mupite muntima mwanga, ndilekerereni madhawa anga, cuti ndikhale na upenhu utswa chinchino pano, pina, nsicu ubhozi ndizakhale na Imwe cwenda na cwenda. Ndiphezeni cuti ndicuvereni pina ndikhale Wanu ninga mwana Wanu. Amen.

Werenga Buku, longa na Mulungu nsicu zansene! Juwau; 3:16

