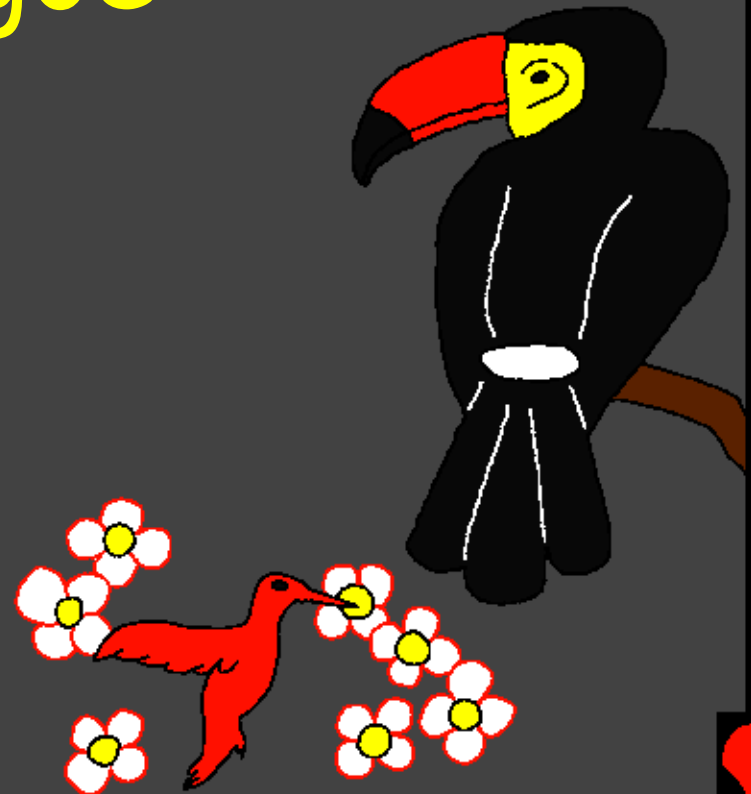
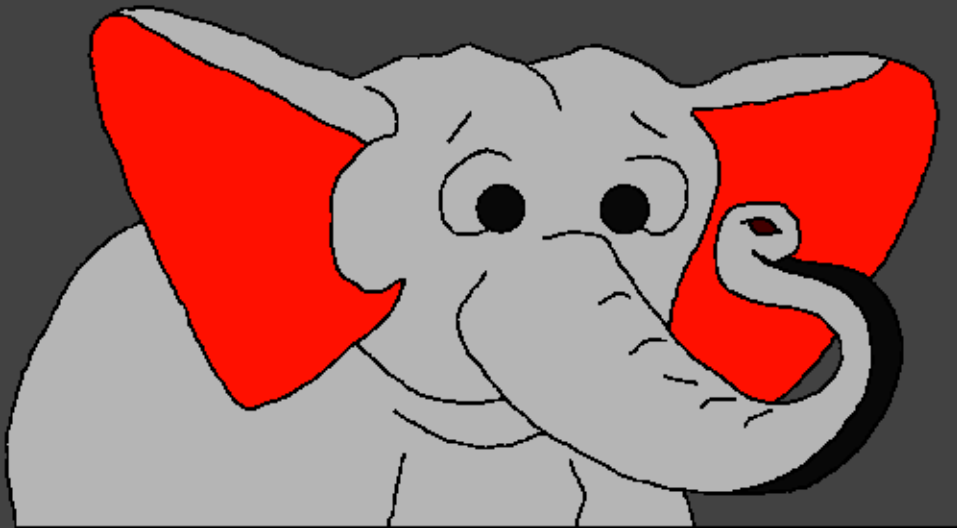


Bebele ya Bana  
E hlahisa

Ha Molimo a ne a  
etsa ntho e ngoe  
le e ngoe



E ngotsoe ke: Edward Hughes

Lipapiso ka: Byron Unger; Lazarus  
Alastair Paterson

E fetotsoe ke: Bob Davies; Tammy S.

E fetoletsoe ke: [www.christian-translation.com](http://www.christian-translation.com)

E hlahisitsoe ke: Bible for Children  
[www.M1914.org](http://www.M1914.org)

©2020 Bible for Children, Inc.

License: U na le tokelo ea ho kopitsa kapa ho hatisa pale ena,  
ha feela u sa e rekise.



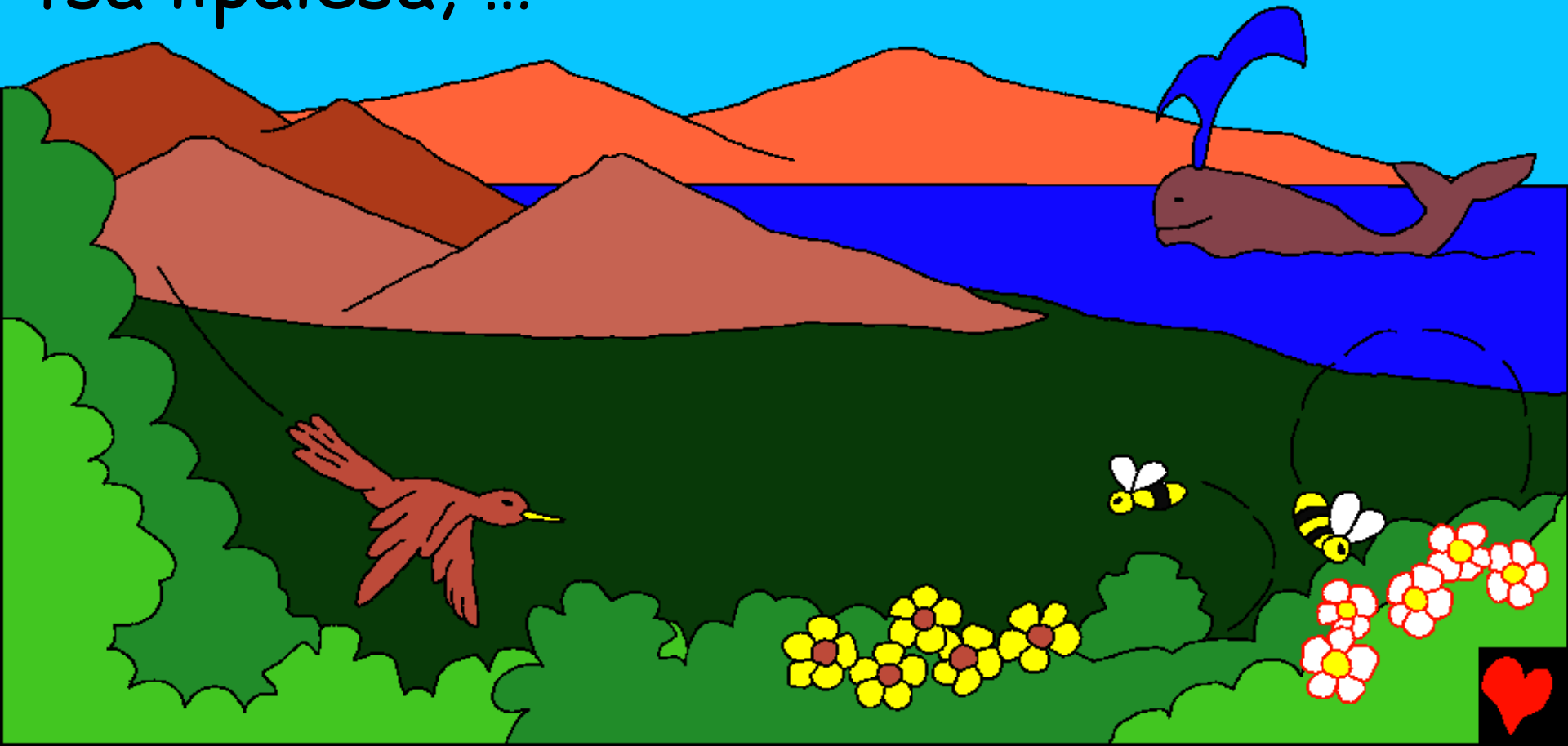
Ke mang ea re entseng? Bebele, e leng  
Lentsoe la Molimo, e re bolella hore na  
motho o qalile joang. Khale koana, Molimo  
o ile a etsa motho oa pele mme a  
mo reha lebitso  
la Adama.



Molimo o entse Adama ka lerōle la  
lefatše. Ha Molimo a bululela bophelo  
ho Adama, o ile a phela. O ile a iphumana  
a le serapeng se setle se  
bitsoang Edene.



Pele Molimo a etsa Adama, o ile a etsa  
lefatše le letle le tletseng lintho tse ntle.  
Khato ka khato Molimo o ile a etsa libaka  
tse ntle tsa lithaba le libaka tse ntle  
tsa lipalesa, ...

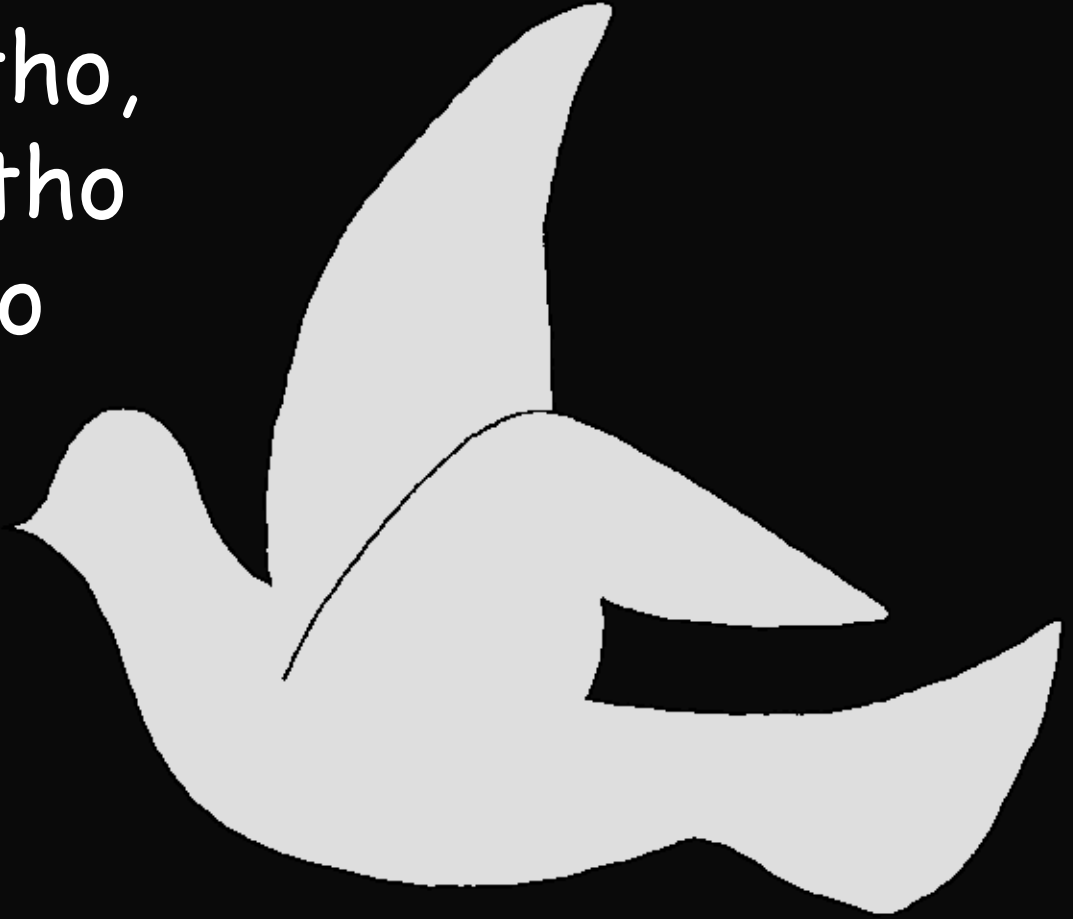


... lipalesa tse monko o monate le lifate  
tse telele, linonyana tse mebala e  
khanyang le linotši tse lutlang, maruarua  
a loebehlanang le likhopo tse thellang.  
Ebile, Molimo o entse tsohle tse

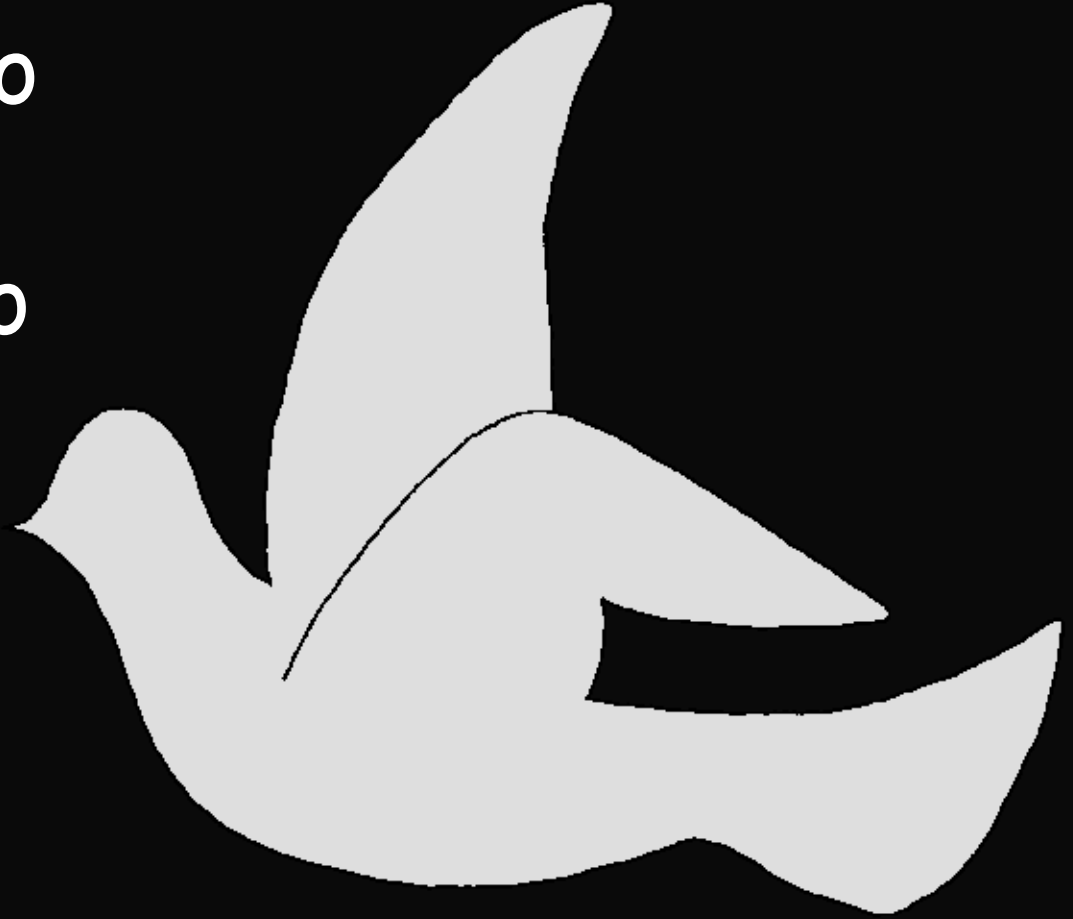
teng - tsohle.



Tshimolohong, pele  
Molimo a etsa letho,  
ho ne ho se na letho  
haese Molimo. Ho  
se na batho kapa  
libaka kapa  
lintho. Letho.



Ho se na leseli ebile  
ho se na lefifi. Ho  
se na holimo, ho  
se na le tlase. Ho  
se na maobane  
ebile ho se na le  
hosane. Ho ne  
ho ena le Molimo  
feela ea neng a  
sena qalo. Eaba  
Molimo o nka khato!



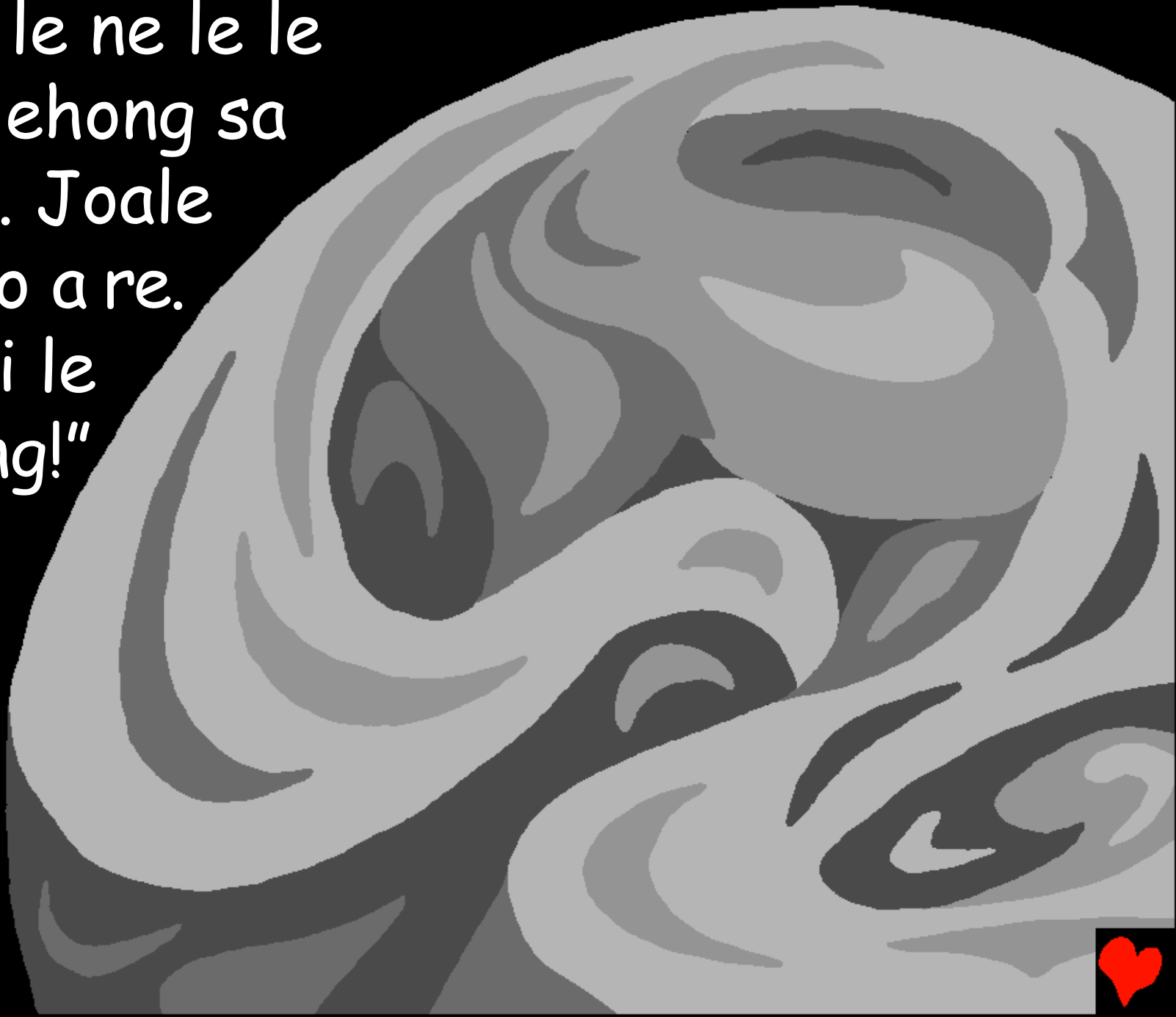
Tshimolohong, Modimo o bopile  
maholimo le lefatše.



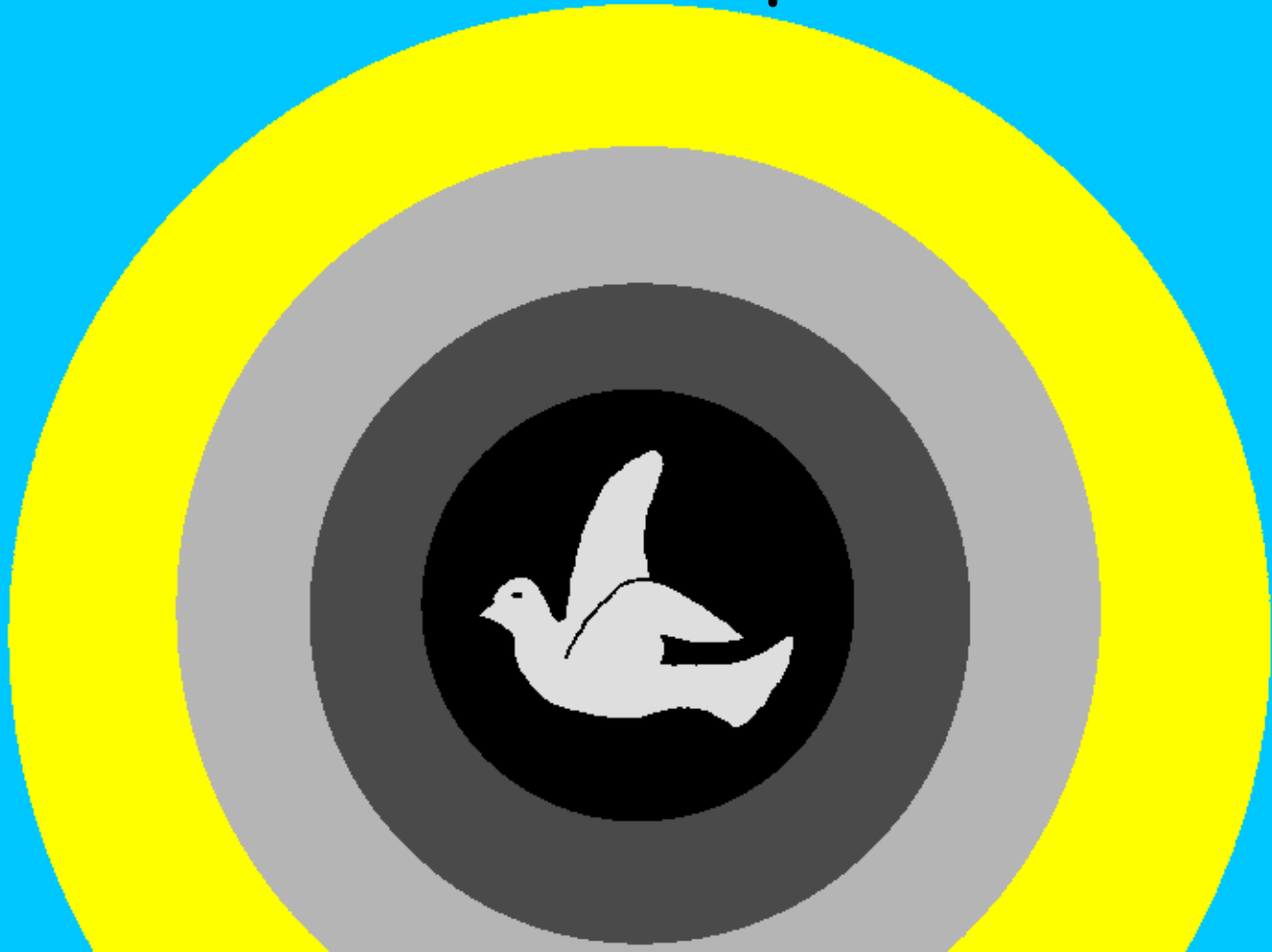
Mme lefatše le ne  
le se na sebopeho  
ebile le se  
na letho.



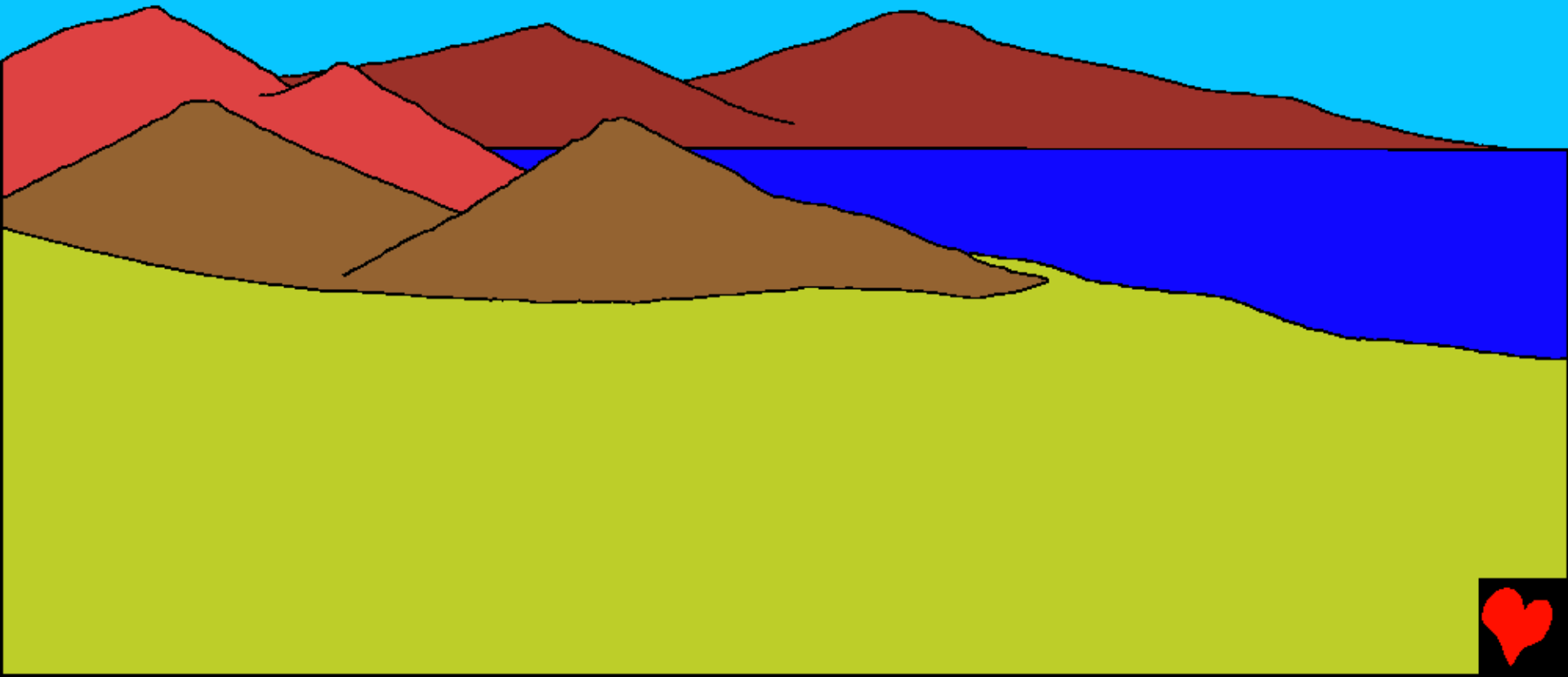
Lefifi le ne le le  
sefahlehong sa  
boliba. Joale  
Molimo a re.  
"Leseli le  
be teng!"



Yaba leledi le ba teng. Modimo a re  
leledi ke "motsheare" mme a re lefifi ke  
"bosiu". Mme mantsiboea le hoseng e bile  
letsatsi la pele.



Ka letsatsi la bobeli, Molimo a tliša metsi  
a maoatle, le matšā a hlophisehileng ka  
tlas'a Leholimo. Ka letsatsi la boraro,  
Molimo a re, "Sebaka se omileng se  
hlahe." Mme ya etsahala.



Molimo o boetse o laetse joang le  
lipalesa le lihlahla le lifate  
hore li hlahe.  
Mme tsa hlahella.



Mme mantsiboea le hosasa e ne  
e le letsatsi la boraro.



Eaba Molimo o etsa letsatsi,  
le khoeli, le linaledi tse  
ngata hoo ho seng motho  
ea ka li balang. Mme  
mantsiboea le hosasa  
e bile letsatsi la bone.



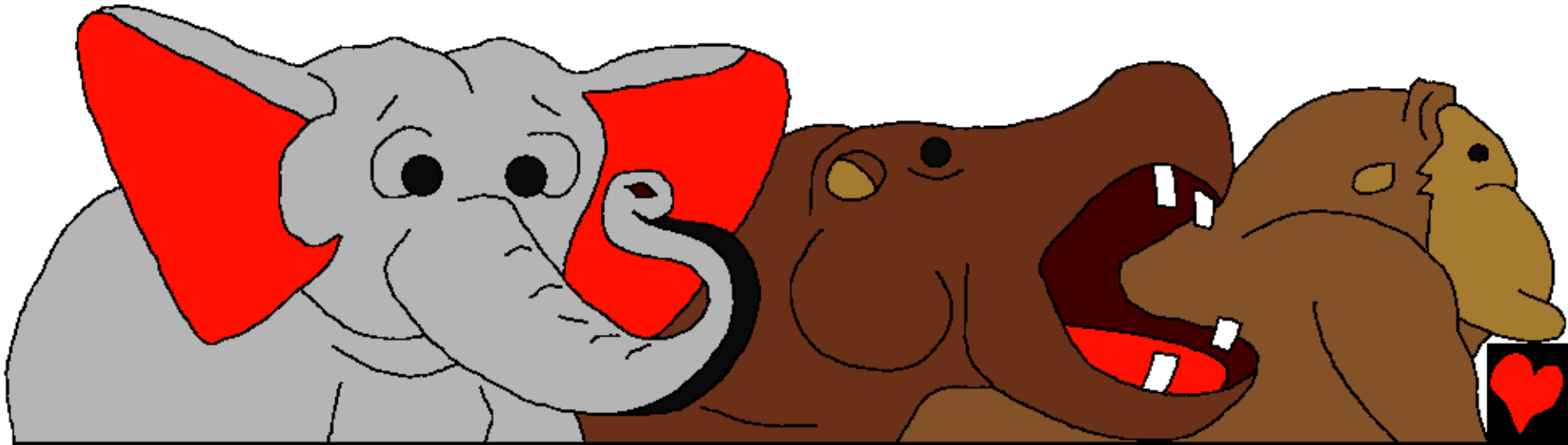
Ho ile ha latela lenane  
la Molimo ho libopuoa  
tsa leoatleng le lithapi  
le linonyana. Ka  
letsatsi la bohlanano A  
etsa lithapi tsa mofuta  
o mong le o mong ho  
tlatša metsi a lefatše  
le mofuta o mong le o  
mong oa linonyana ho  
thabela lefatše le  
leoatile le leholimo.



Mme mantsiboea le  
hosasa e ne e le  
letsatsi la bohloano.

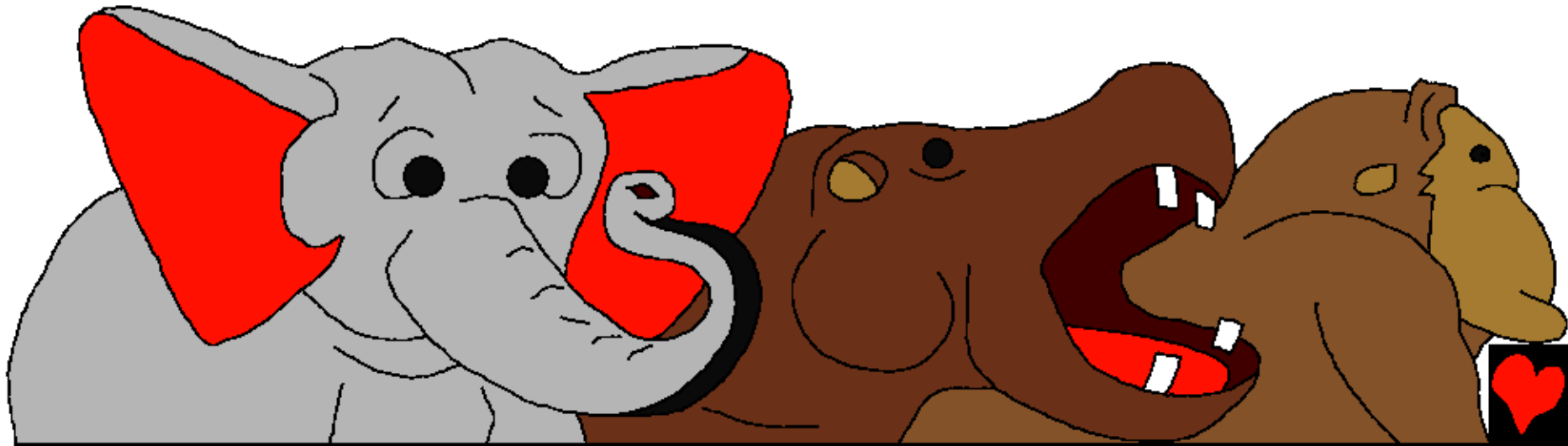


Kamora moo, Molimo o ile a bua hape.  
O itse, "Lefatše le ke le hlahise libopuo  
tse phelang. Mofuta o mong le o mong  
oa phoofolo le likokoanyana li bile teng.  
Ho ne ho e-na le litlou tse sisinang  
lefatše le li-bea tse khabisitsoeng.



Litšoene tse nang le lonya le likoena  
tse ngata. Mofuta o mong le o mong  
oa phoofolo o entsoe ke Molimo ka  
letsatsi leo.

Mme mantsiboea le hosasa e ne e le  
letsatsi la botšelela.



Molimo o entse ho hong ka letsatsi la  
botšelela -ntho e ikhethang haholo.  
Tsohle di ne di se di loketse Motho.  
Ho ne ho na le lijo  
masimong le liphoofole  
ho mo sebeletsa.



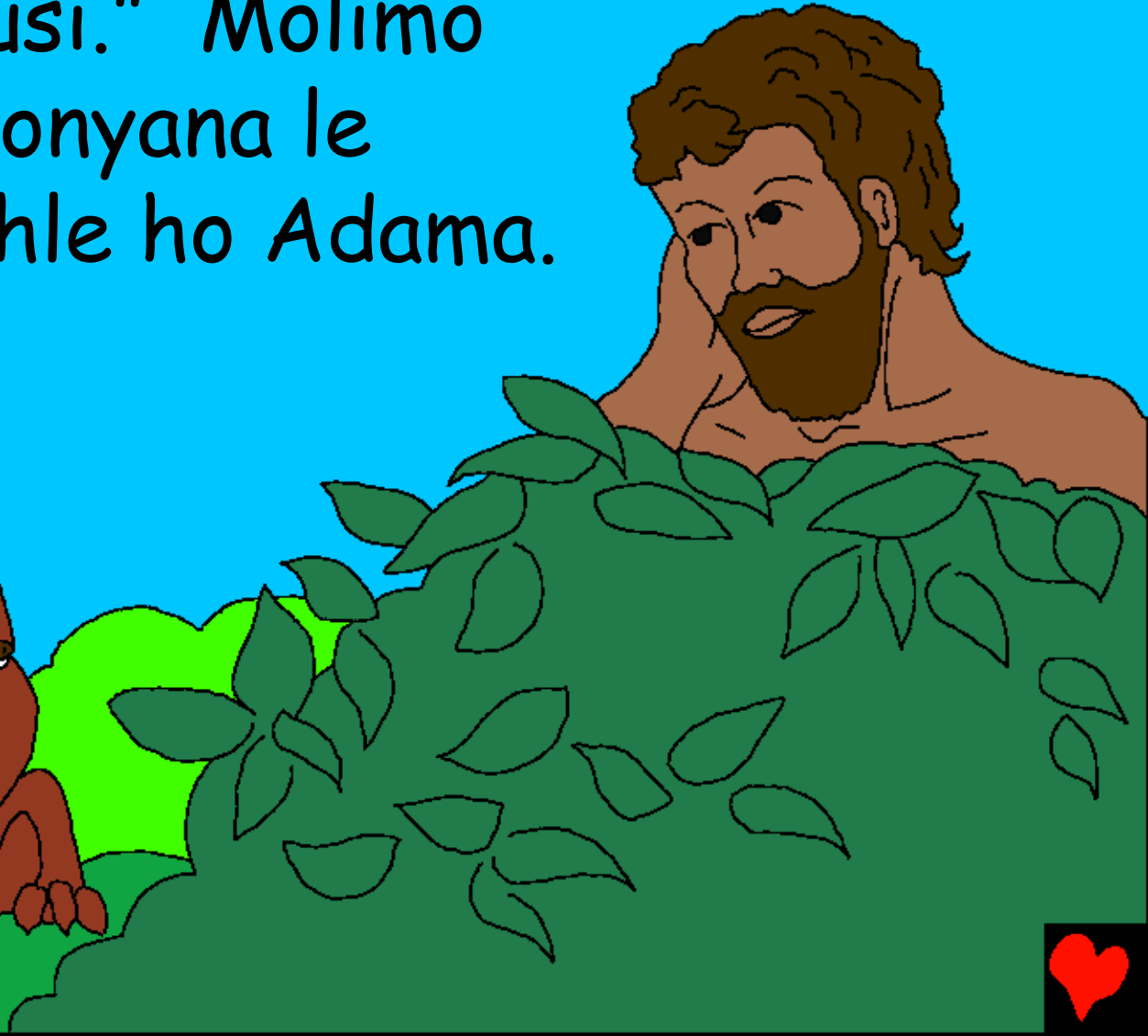
Mme Molimo a re, "A re etse motho ka  
setšoantšo sa Rona. E ke e be molaoli oa  
tsohle tse lefatšeng." KAHOO MOLIMO  
O BŌPILE MOTHO KA  
SETŠOANTŠO SA HAE;  
KA SETŠOANTŠO  
SA MOLIMO  
O MO BŌPILE.



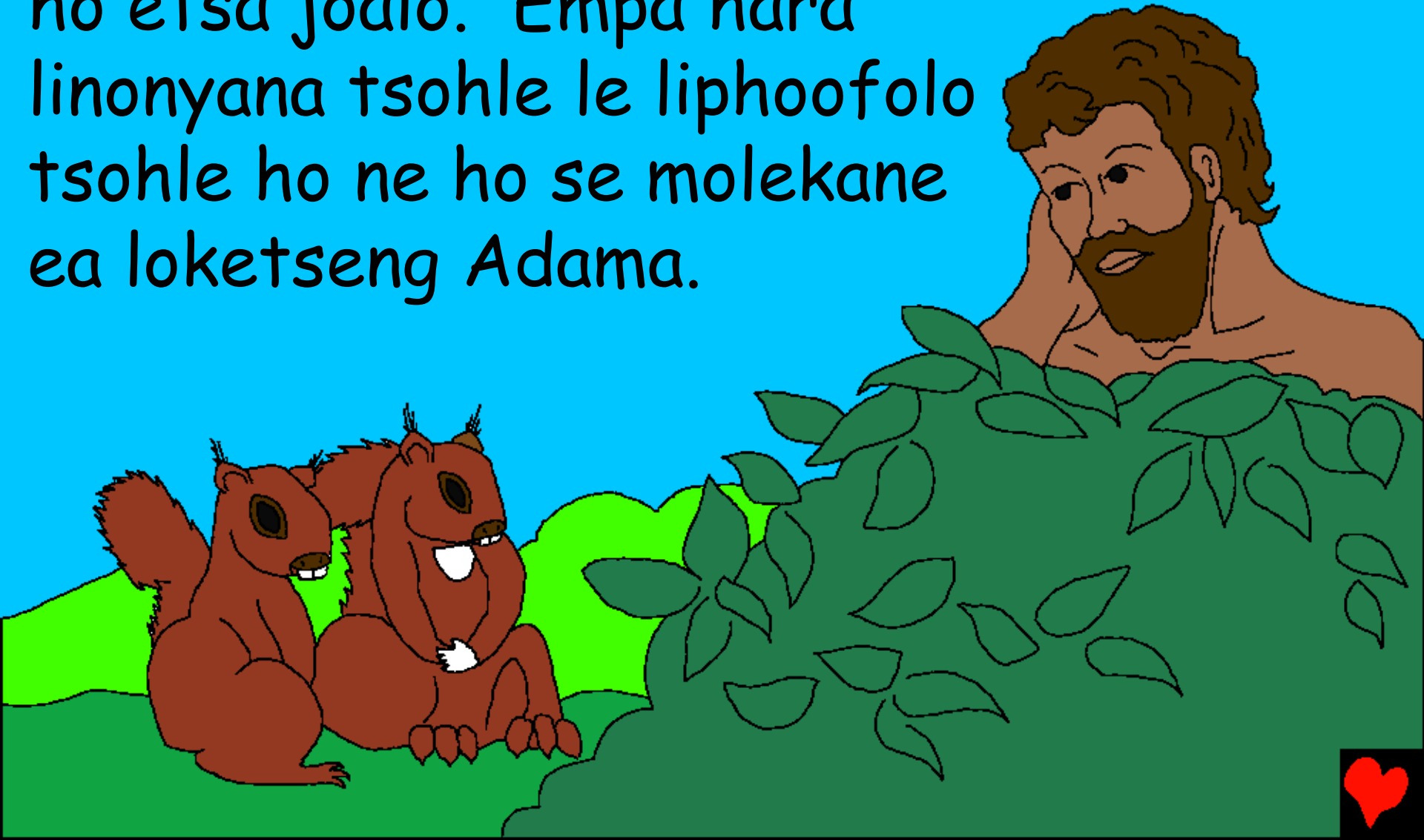
Molimo o ile a bua  
le Adama. "Eja seo  
o se lakatsang  
serapeng. Empa  
u se ke ua ja tsa  
sefate sa tsebo  
ea botle le bobbe.  
Haeba u ja  
sefateng seo  
ruri u tla shoa."



Eaba Jehova Molimo o re: "Ha ho hotle hore motho a be mong. Ke tla mo etsetsa mothusi." Molimo o ile a tliša linonyana le liphoofole tsohle ho Adama.



Adame o ile a ba reha mabitso kaofela.  
E tlameha ebe o ne a le bohlae haholo  
ho etsa joalo. Empa hara  
linonyana tsohle le liphoofole  
tsohle ho ne ho se molekane  
ea loketseng Adama.



Molimo o ile a tlišetsa Adama boroko bo  
boholo. Modimo a ntsha le leng la  
mahopo a hae, ka lehopo leo  
Modimo a le ntshitseng  
ho motho, a bopa mosadi.  
Mosali eo Molimo a  
mo entseng o ne  
a nepile hantle  
hore e be  
molekane  
oa Adama.



Modimo o entse tsohle ka matsatsi  
a tsheletseng. Eaba Molimo o  
hlohonolofatsa letsatsi la bosupa  
mme a le etsa letsatsi la phomolo.



Serapeng sa Edene, Adama le Eva  
mosali oa hae ba ne ba thabile ka  
ho phethahetseng ho mamela  
Molimo. Molimo e ne e le MOR'A  
bona, Mohlokomeli le  
Motsoalle oa bona.



Ha Molimo a ne a etsa ntho  
e ngoe le e ngoe

Pale e tsoang Lentsoeng la Molimo,  
Bibele,

e fumaneha ho

Genese 1-2

"Ho kenella ha mantsoe a Hao ho fana  
ka leseli." Pesaleme ea 119:130



Qetello



Pale ena ea Bibeले e re bolella ka Molimo  
oa rona ea hlolang ea re entseng le ea  
batlang hore u mo tsebe.

Molimo oa tseba hore re entse lintho tse  
mpe, tseo a reng ke sebe. Kotlo ea sebe  
ke lefu, empa Molimo oa u rata haholo  
O rometse Mora oa hae a le mong, Jesu,  
ho shoa sefapanong le ho fuoa kotlo  
bakeng sa libe tsa hao. Yaba Jesu o  
tsohile bafung mme o ile hae leholimong!  
Haeba u lumela ho Jesu 'me u mo kopa  
hore a u tšoarele libe, o tla se etsa! O  
tla tla ho uena joale, 'me u tla phela le  
eena ka ho sa feleng.



Haeba u lumela hore sena ke 'nete,  
bolella Molimo sena:

Jesu ea ratehang, ke lumela hore u  
Molimo, 'me u bile monna oa ho shoela  
libe tsa ka,' me joale o phela hape. Ka  
kopo kena bophelong ba ka 'me u  
ntšoarele libe tsa ka, e le hore nka  
ba le bophelo bo bocha hona joale,' me ka  
letsatsi le leng ke tla ba le Wena ka ho sa  
feleng. Nthuse ho u mamela le ho u  
phelela joalo ka ngoana oa hau. Amen.

Bala Bibe le 'me u bue le Molimo letsatsi  
le leng le le leng! Johanne 3:16

