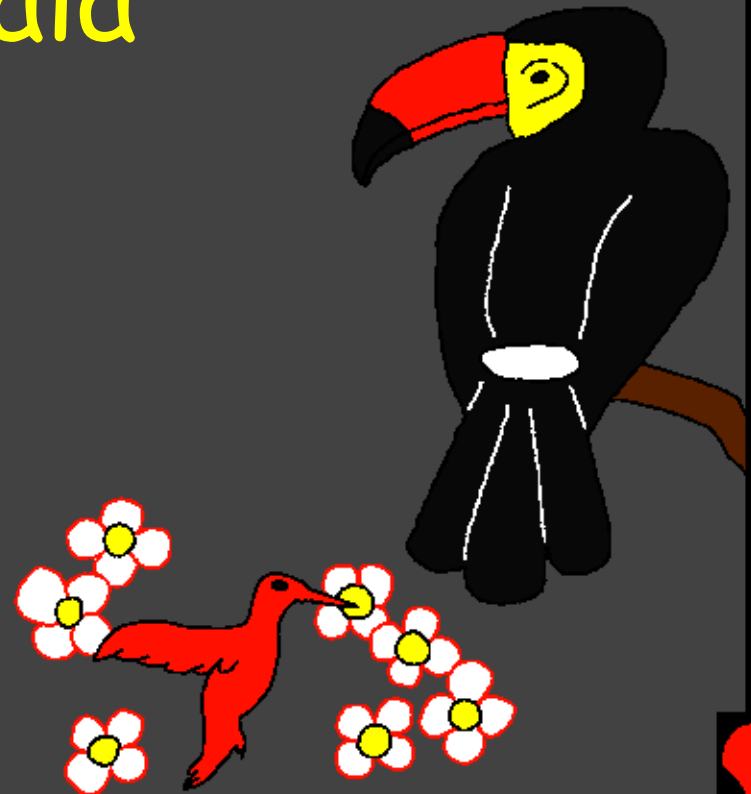
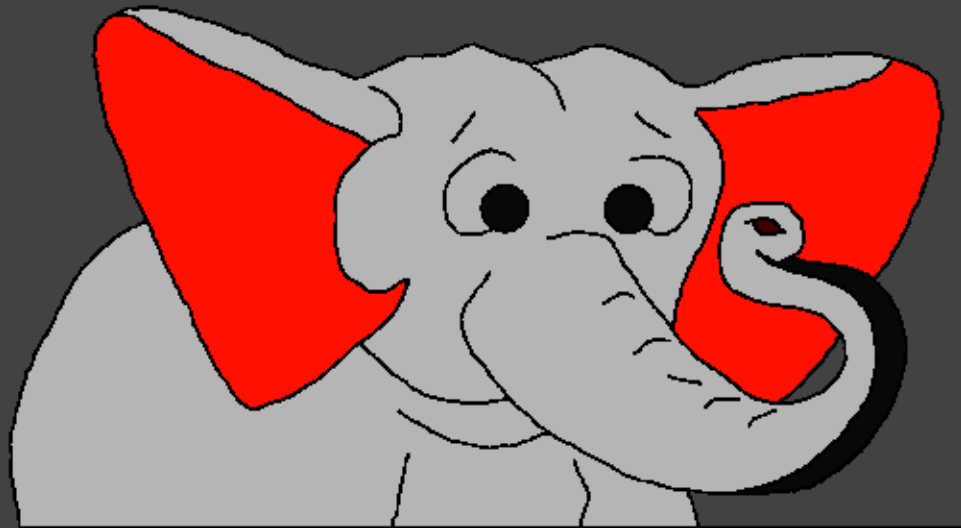


Incwadzi lengcwele yebantfwana
Tipho

Ngasikhasi
Nkulunkulu adala
konke



Ibhalwe ngu: Edward Hughes

Icaciswe ngu: Byron Unger; Lazarus
Alastair Paterson

Itsetswe ngu: Bob Davies; Tammy S.

Itolikwe ngu: www.christian-translation.com

Wakhicitwa ngu: Bible for Children
www.M1914.org

©2020 Bible for Children, Inc.

Licentse: unelilungelo nokutsatsa lomdlalo nangabe nje
ungeke uyitsengise.



Sidalwe ngobani? Livi noma incwadzi yebungwele
ngiyo lasitjela kabanti kutsi kubandiulula kwaca
kanjani. Endulo, Mkulunkulu wadala indvodza
yekucala wayibita ngekutsi ngu Adam. Nkulunkulu
wambumba ngemhlabasi, wamphefumutela
emakhateni ache umoya wekuphila,
umontfu wabakanjalo
umphefomulo
lopholako.

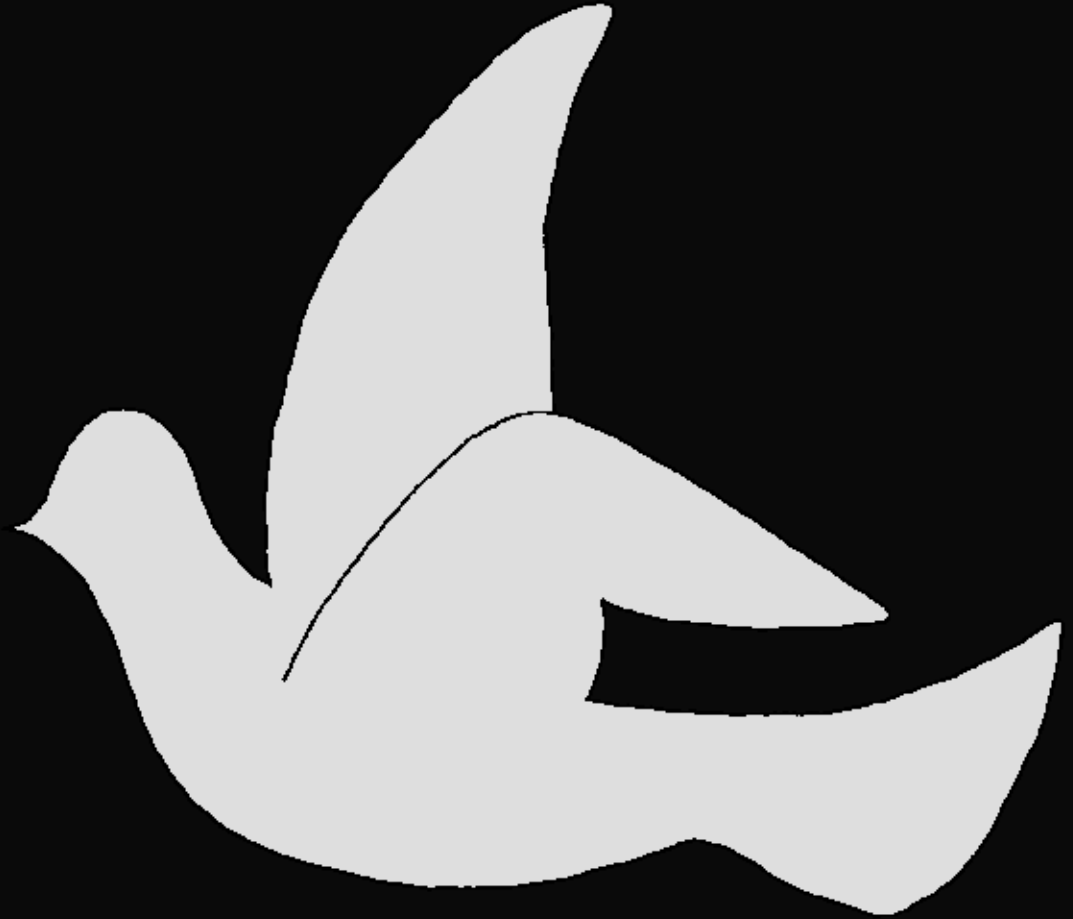


Uma Nkulunkulu asengaka mbombi Adam, wadala umhlaba wawugcwalisa ngato tonthe tintfo letnhle naleti mangalisako. Ngeluhlwi lakhona wadala tinsaba, timbale netihlahla, tinyoni, tinhlanti taselwandle kanye netilwanyana tonkhe letinwabulukako

emhlabeni. Nkulunkulu wadala konkhe.



Ekucaleni, Nkulunkulu
asengakadali lutfo,
bekute bekukhona
ngaphandle kwankhe.
Bekungena bantfu
noma tinfo tsite.
Bekute lutfo lebe
yehla yenyuka.
Kungena langa
lakusasa noma
layitolo. Bekuna
Nkulunkulu
kuphela voiwase
ucalaumsebenti.



Ekucaleni Nkulunkulu,
wadala lizulu nemhlaba.



Umhlaba kwakulihchlane
lalingenalutfo.
Kwakubomnyama.
Wase Nkulunkulu
utsi makube
nekukhanya
"kwaba-
khona
kukhanya".



Nkulunkulu wase uhlukana kukhanya nebumnyama.
Wabita kukhanya ngekusi imini bese bumnyama
wabubita ngekutsi busuku. Kwaba kuhlwa
nekusalusuku lwekucala.



Ngelilanga lesibili, Nkulunkulu watsi emanti
laphasi kwelizulu akagelete ndzawonyewase
uwabita ngekutsi ngemanti aselwandle. Ngelilanga
lesitsatfu, NKulunkulu watsi "Umhlaba awuvete
tjani" kwaba-njalo.



Nkulunkulu waphindza watsi akuvele tjani,
timbale kanye netihlahla letitselako.
Kwaba-njalo. Kwaba kuhlwa
nekusa kwelilanga
lesitsatfi.



Wase udala lilanga,
tinkhanyenti taba tinyenti
kakhulu kangangobe
tangabaleki. Kwaba kuhlwa
nekusa kwelilanga lasine.



Emva kwaloko wadala
tonthe tinhobe
tetimfishi kanye
netilwane tonkhe
letiphilako lethambako.
Emanti agcwala tona
ngetinholobo tato,
netinyoni tonkhe
letinemaphiko
ngetinhlobo tato.
Kwaba kuhlwa kwaba
kusa kwelilanga
lesihlanu.



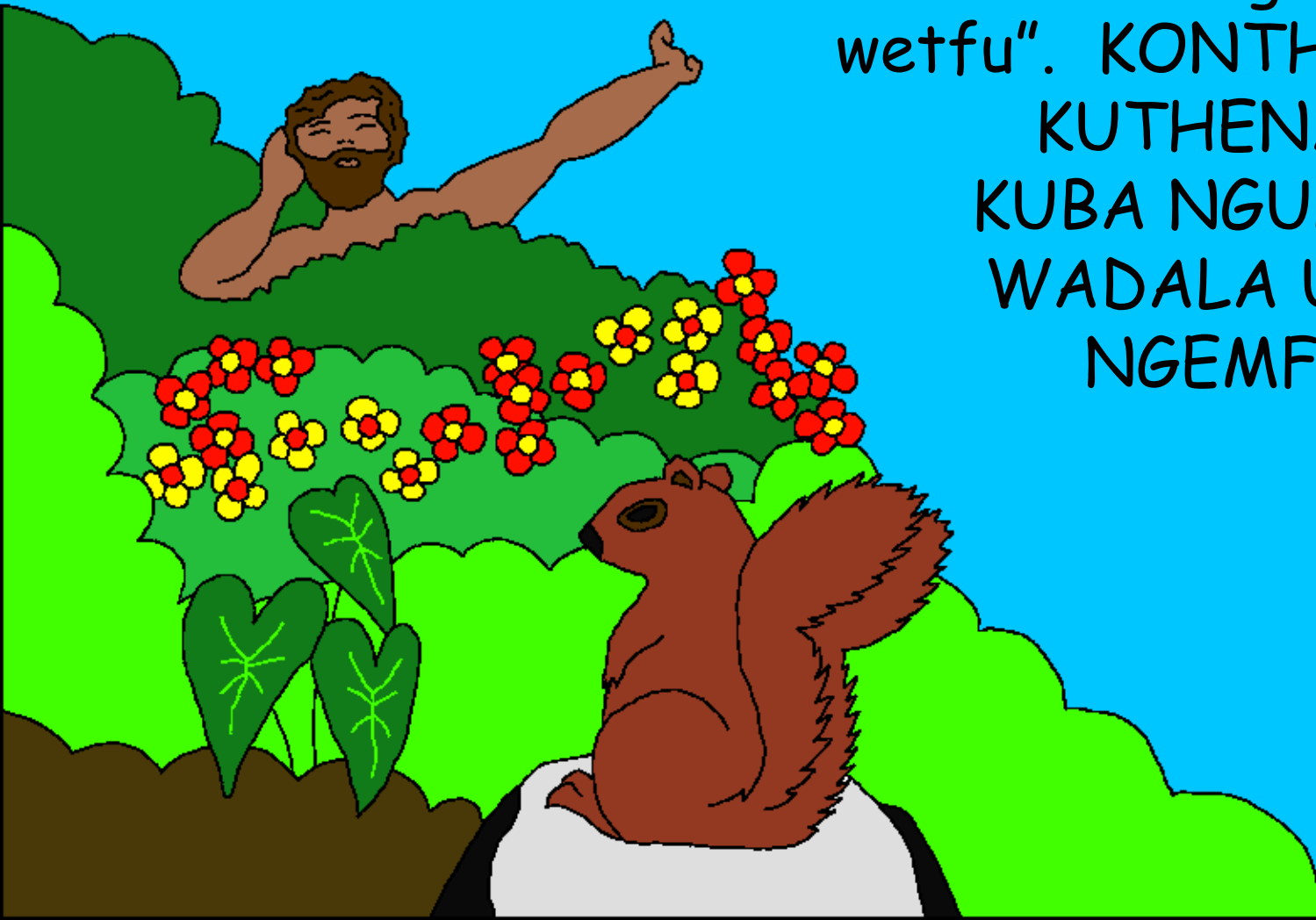
Nkulunkulu wase utsi, "Umhlaba asale uveta tilwane letiphilato ..." sonkhe silwane savelai Tikhomo, netilwanyana letinwabulukato kanye netindlovu tavela. Lonkhe luhlobo lwesilwane lwabakhona ngekudalwa ngu Nkulunkulu.

Kwaba kuhlwa kwaba kusa kwelilanga lwesitfupha.



Ngelilanga lwesitfupha, Nkulunkulu wenta
intfo lemcoka kakhulu. Umhlaba wase ulondzele
umuntfu. Konkhe kwase kuthena wase utsi "Asente

bantfu ngemfanakiwo
wetfu". KONTHE KWASE
KUTHENA. KCHASE
KUBA NGULAPHO TE
WADALA UMUNTFU
NGEMFANETISO
WATHE.



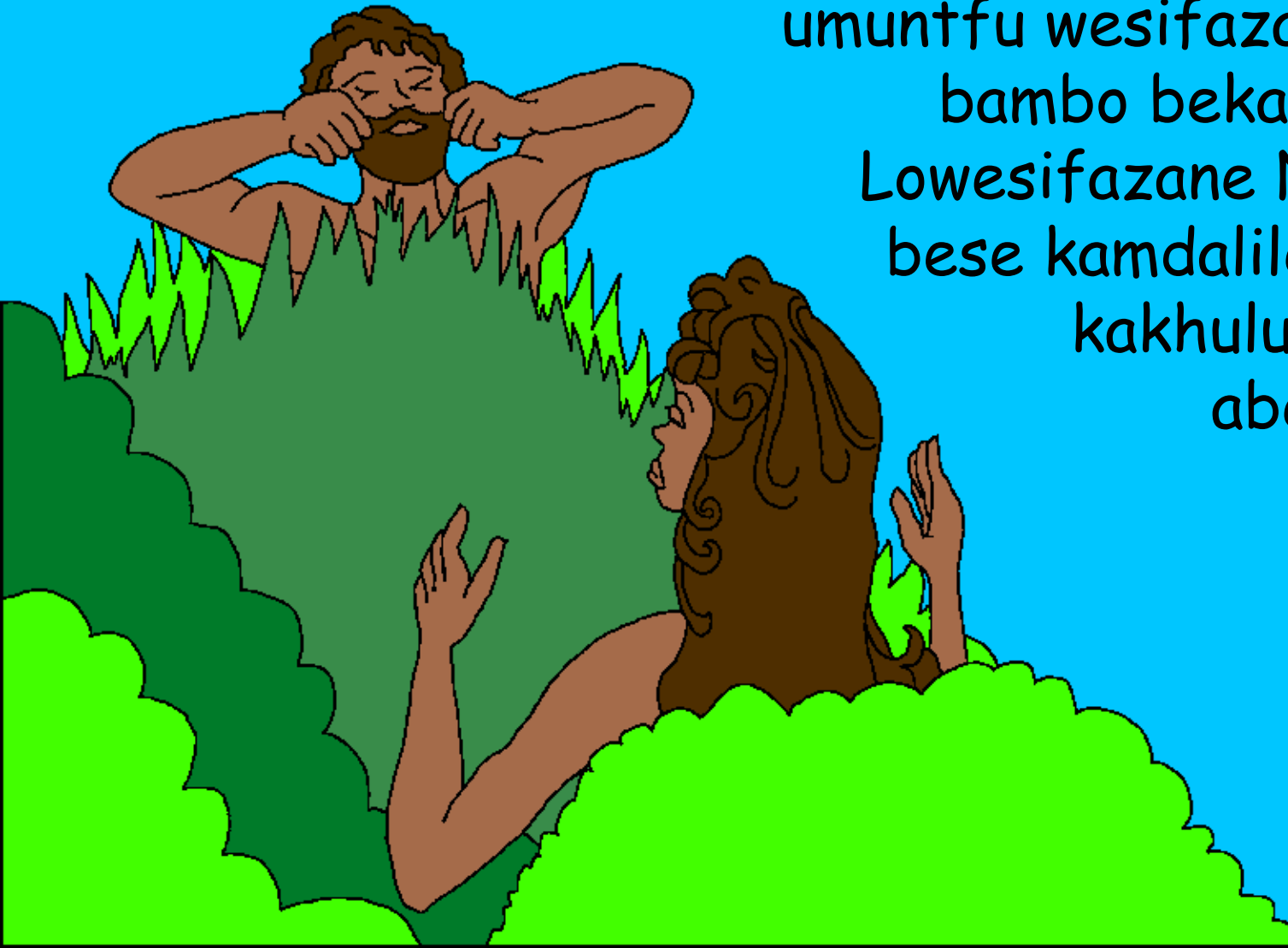
Nkulunkulu
watsi ku
Adam.
“Ndlani
konkhe
lokufisile
lansimini yase
Eden. Kopha ungadli
kulesihlahla selwati
lokuhle nalokubi ngobe
waze wadla khona
utokufa nekufa.”



“Akusiko lokuhle kutsi umuntfu ahle yedwa” kwasho Nkulunkulu. Wabona kutsi kunoono ente umsiti lofamana-naye. Nkulunkulu wase uletsa tonkhe letilwane netinyoni tizulu ku Adam. Adam watipha emagama. Kufanate abeyindvadza lehlakaniphile ngekwanta loku. Kepha ngekuba njalo akamtfolelanga umsiti lonjengayo.



Nkulunkulu wabona kuncono amehisele
butfongo lobukhulu, walala wase ususa, watsatso
lunye lwitimbambo takhe wavala ngenyama, wakha
umuntfu wesifazane ngalelo
bambo bekasalitsetse.
Lowesifazane Nkulunkulu
bese kamdalile abekanle
kakhulu kutsi vele
abelubhambo
Iwa Adam.



Simakadze Wadala konkhe ngemalanga
lasitfupha wabese Nkulunkulu ubusisa lilanga
lesikhombisa walenta lilanga lekuphumula.
Engadzeni yase Edeni, Adam nelubhambo
Iwakhe Eva bebanontfokoto lephelele
bamhlonipha Nkulunkulu. Nkulunkulu
abeyiNkhosi yabo, anguMnikati
wetintfo tonkhe futsi
engumngani wabo.



Ngasikhasi Nkulunkulu adala konke
indzaba levela emavini aNkulunkulu
intfolakala ku

Indzaba levela emavini aNkulunkulu,
liBhayibheli, intfolakala ku *Genesisi 1- 2*

"Kungena kwemavi akho kunika kukhanya."
Taga 119:130



Siphetfo



Lenzaba yeliBhaybheli isitjela nga Nkulunkulu wetsu lomangalisako losentile/losdalile futsi lofuna kuwe wena wati ngaye.

Nkulunkulu uyati kutsi sitentile tinto letimbi latibita ngeTono. sijeziso sesono kufa, kodvwa Nkulunkulu ukutsandze kakhulu watsumela indvodzana yakhe lengu Jesu yatofa esiphambanweni yajeziselwa tono tetsu. Jesu waphindze wavuka ekufeni wanyukela ekhaya ezulwini! Mangabe ukholelwa kuJesu uphindze umcele akucolele etonweni takho, utokucolela utota atophila kuwe nyalo futsi utophila naye ingunaphakade.

Mangabe utsemba kutsi leli liciniso, yisho loku k uNkulunkulu: Jesu lotsandzekako, ngiyetsemba kutsi ungu Nkulunkulu, futsi waba nglendzodza lefela tono tami, nyalo uyaphila futsi. Ngicela ute ungene empilweni yami uphinde ungtsetselele amacala ami kuze ngitoba nempilo lensha, futsi ngalelinye lilanga ngitoba nawe ingunaphakade. Ngsite ngikulandzele ngiphindze ngikphilele njege mntfwana wakho amen/makube njalo.

Fundza liBhaybheli uphindze ukhulume naNkulunkulu onke malanga! Johane 3:16

