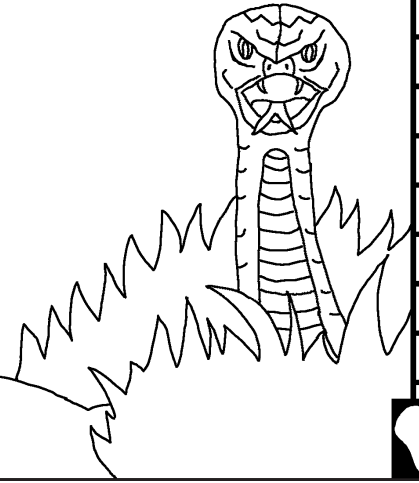


Dibuku d'ekila d'otetela te ana
Woshasha

Etatelu kokeyi wuntu



Fundama lee: Edward Hughes

Illustré lee: Byron Unger; Lazarus
Alastair Paterson

Mbokoyama lee: M. Maillot; Tammy S.

Kadimolama lee: www.christian-translation.com

Ndja malee (tomba ma lee): Bible for Children
www.M1914.org

©2021 Bible for Children, Inc.

Aka shama malee: Nyeko la okende wa funda ndo
wa sangola koko nyu hanyoto sondja.

Nzambi akatunge tshe
Lamakatunge nzambi umtta latandu
ADAMA nde aka seme le kamgo ka
EDENA nde la wa dende EVA vo
wakiko lingeno ngema wefula wa me
nye mzambi ndo wa ndjala
la nde polo ndo shinye.



Nde akambola umuntu ate ukunde unyashongu ku nyutele ati tanyolekake elua wetamba tshe wele lekambo kene. Ku wumuntu akaloya ulu aliue ate sho mbeyaka nde elua wele ekambo kele unyashongu aka toko komi ate ta nyele kake nduku olua wa malotamba wele lateyi w, ekambo koyanga minanda nyutu ko vo Ku ului akatela umuntu ali yaa nyu hanyuvo mete.



3

Paka ne dia unyashongu mbejaka ate loshi layo nyele asho anyu wa yo diho ko nya yo yala ako dimi unyashongu nya yeya akambo w, ololo ndu akambo wakolo Wa kake olui ko wa kale olua.



4

Lamakashile EVA mo nya olembe wa nzambi nde aka yolesha ADAMA akatone diande monyala oteketa wa nzambi.



5

Asho awo waka diho vo wa keye vate e taka taka mbeso vo wa kose aka tshi w, etamba wa fingu waka ya telela afunga ko vo wa koki loho koso la latuyeleka unyashongu lama kandeteta ka l ekambo la dikolo ku pami la wadende wa ka hembu ndjashi lateyi w, etamba ne dia nde atuku waema.



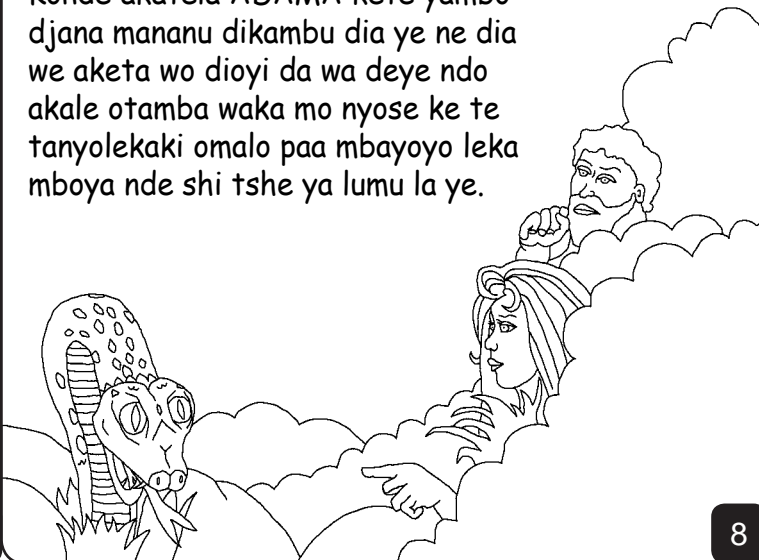
6

Lamacaye nzambi la dilo l ekambo nde akeye kem kaka sale ADAMA nde la EVA ADAMA aka hangue EVA ndo EVA aka hangue olui la so latuyalaka unyashongu aka tela olui ate omalodikambo dia kaya tshe ne mbamboyo ehama manenu we ndi akatela umuntu ate dimi layo kufudiya asui loshi yaye ya demi ndo latuelo caye kama.

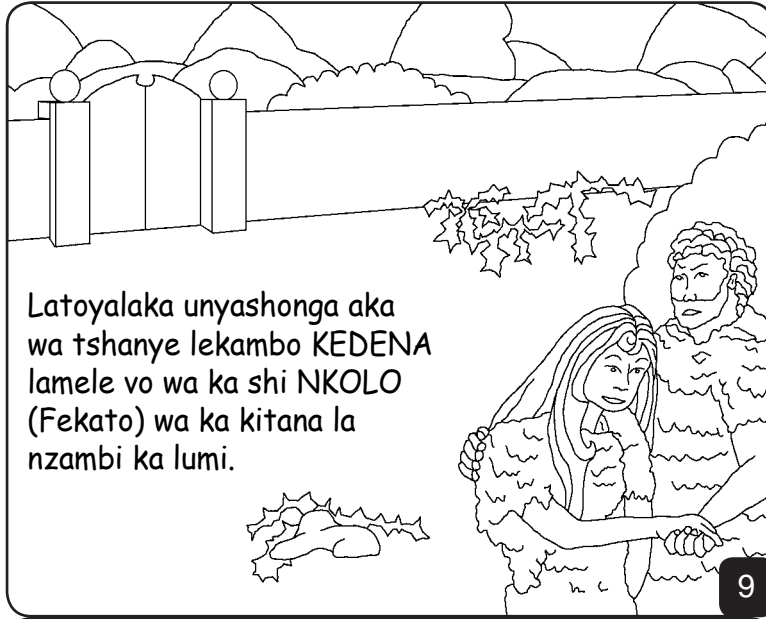


7

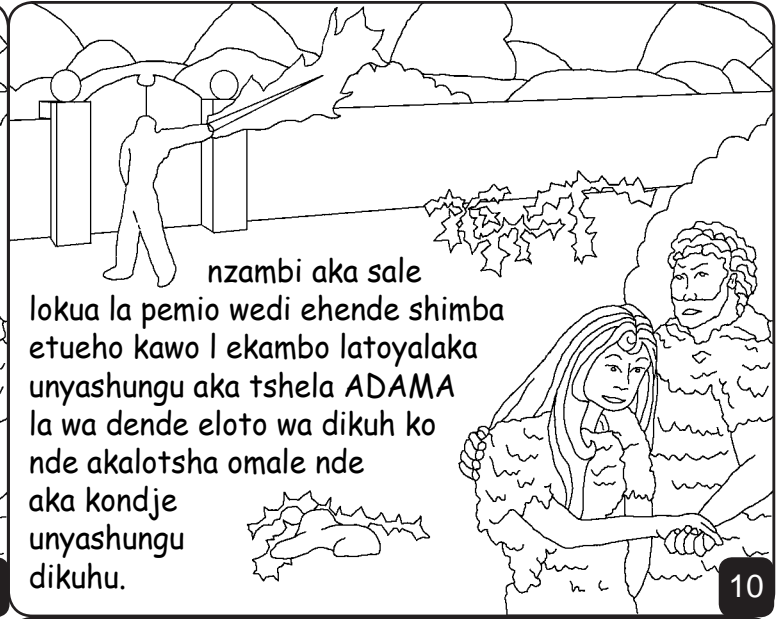
Konde akatela ADAMA kete yambo djana mananu dikambu dia ye ne dia we aketa wo dioyi da wa deye ndo akale otamba waka mo nyose ke te tanyolekaki omalo paa mbayoyo leka mboya nde shi tshe ya lumu la ye.



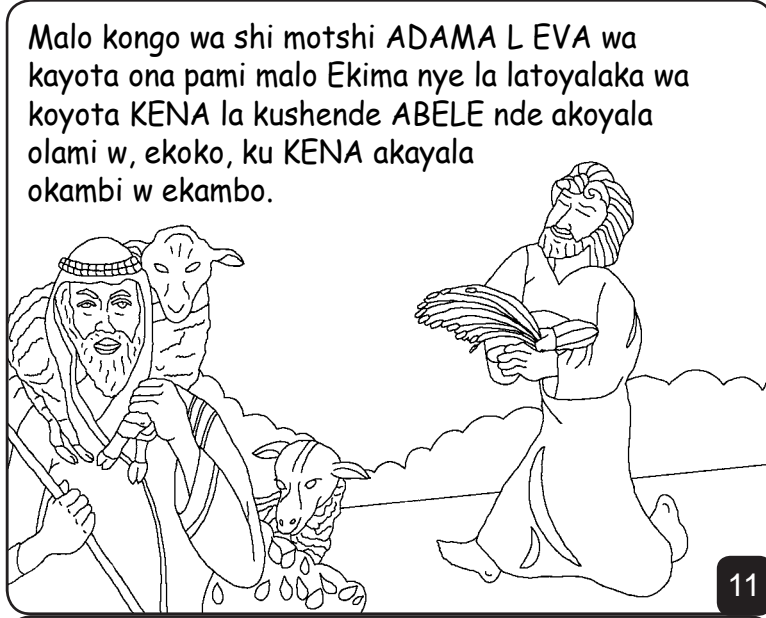
8



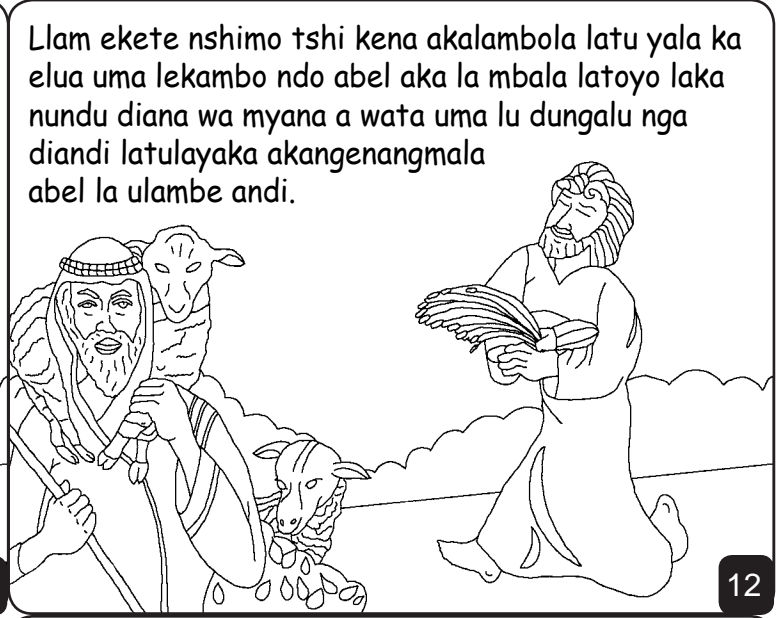
Latoyalaka unyashonga aka wa tshanye lekambo KEDENA lamele vo wa ka shi NKOLO (Fekato) wa ka kitana la nzambi ka lumi.



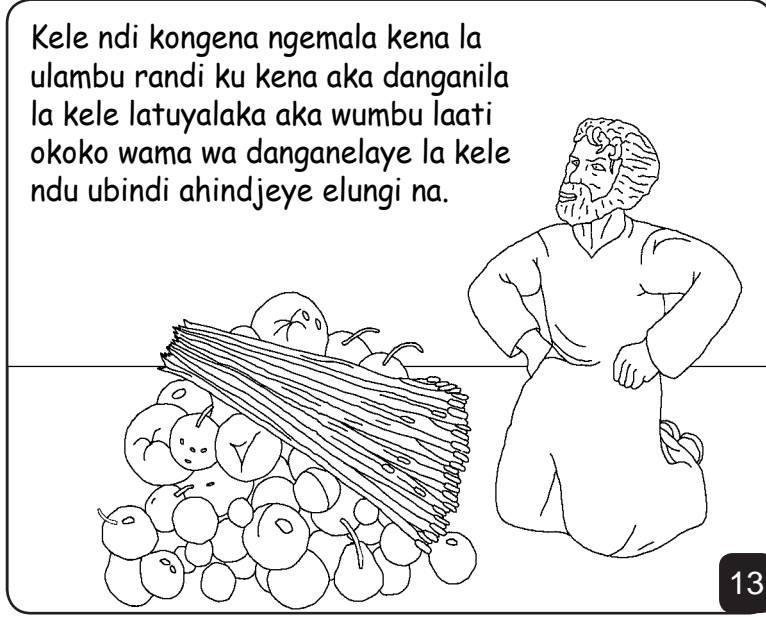
nzambi aka sale lokua la pemio wedi ehende shimba etueho kawo l ekambo latoyalaka unyashungu aka tshela ADAMA la wa dende eloto wa dikuh ko nde akalotsha omale nde aka kondje unyashungu dikuhu.



Malo kongo wa shi motshi ADAMA L EVA wa kayota ona pami malo Ekima nye la latoyalaka wa koyota KENA la kushende ABELE nde akoyala olami w, ekoko, ku KENA akayala okambi w ekambo.



Llam ekete nshimo tshi kena akalambola latu yala ka elua uma lekambo ndo abel aka la mbala latoyo laka nundu diana wa myana a wata uma lu dungalu nga diandi latulayaka akangenangmala abel la ulambe andi.



Kele ndi kongena ngemala kena la ulambu randi ku kena aka danganila la kele latuyalaka aka wumbu laati okoko wama wa danganelaye la kele ndu ubindi ahindjeye elungi na.



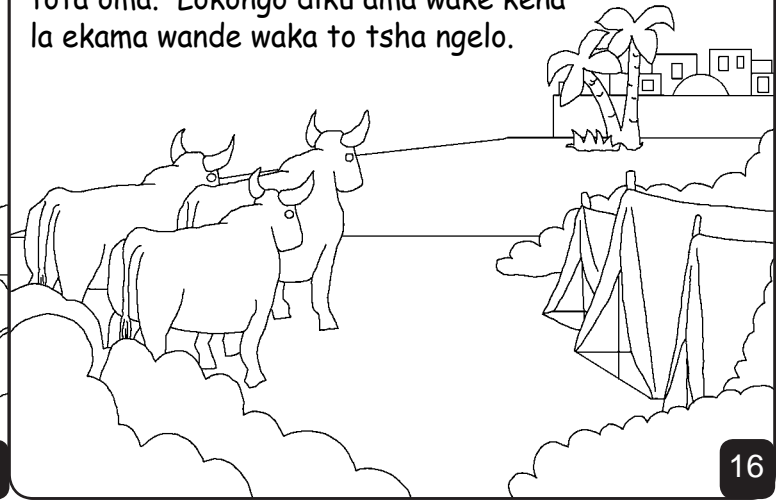
Kile ka kena koshila lokongo diku nde lam akiwo lekambo ndi akamamelo abele aku diaki.

Latuyalaka akombela kena le ndeli omamyo abele ku kena aka kaluya dui ati, lendeyamina ulami wonale ngu mbemi oka nzambi aka wote ati lamayo yokamba kete lamome diamgoyo ha leka kongonyula diango we ayoyala yekeko ndo aha langelo shika.



15

Okone kena akongana la tondo ka laluyalaka aka tu tshuka wadi omake adama leva waka tota oma. Lokongo diku ama wake kena la ekama wande waka to tsha ngelo.



16

Maka edja dja kumbi kaki adama leva akafula nelo esadi esadi lo shisho ato wakasenaka edja ndeka shinge.



17

Pafine muana a seth mutandike, Eva kuakula: Efile mumpse seth bua kualusha Abel. Seth fine muntu a lukuminu mu kukoma 912 bia bidimu aye kupeta bana bebungi.



18

Langa ato wakayo nga to dja we di efula letena tema kakata hata naka monga loko melo nzambi aka yo sa ye di ko ya ndanya andja nyama tshe la tofudu nzambi aka nyangi dia tomga umtu Koko otomo tshi akenama



ohomba la to mdo ka nzambi.

19

Otaki oki noa lodo ho daki seta nga aki la sembwe ndoke le komo nde akake nda ndaka la nzambi. Nde akala kanya ndu onande asutu dia nemiya nzambi kakiame (malawo) nzambi aka lange salela noa lo woho walande ndo wo tshi ki tanyi.



20

Etatelu kokeyi wuntu

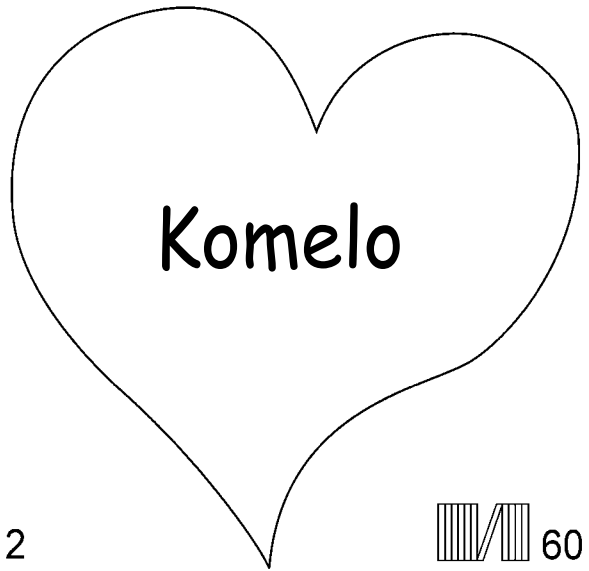
Okondo wotekata wa Nzambi, dibuku d'ekila

Tanemaka loo

Etatelu 3-6

"Mbotwelo koteketa andekeko kokele."
Esambu 119:130

21



2

60

22

Okondo wone wudibudiekila weko lo tewoyedia wonyashongo wakisu wekila latatotomge. Ndo lalanga dia sho mboweya.

Nzambi mbeyaka atesho taki. La etsha wa kolo wakandete nte pekato. Dilanye dia pekato ele nyoyi. Koko nzamibi akitolange otamrniye. Mbakonda tome Etoyi konde K'ona. Yesus, dia ndjovo l'otrmbre wa peketagne. Ndo ndanyema dir pekato yaso. Ko yesus akolo malo nyoyi ko akrrkalola lo paradiso: nakir nyetarir yesus ndo mbolomba dia nde nyodimanyiyor kolo yanyu, il nde oyo ditsha nde ayoya! Nda ayosena lanyu kakiye nda nyu nyayasena lande pondjopondjo.

Norkiwe ambotanyiye wate keso keko mete, ta kene le nzambi yesus yami, dimi mbetawoka nteweko nzamibi, ndo we akayoyala untu dia ndjose lo pekato Yaki, ndo kakiyane weko lo senaloseno loyoyo. Lamalangaye yaka loloseno lami, ndo odimanyiya pekato yami, dia dimi imbeya kondja loseno loyoyo kakiyane ko loshi lomotshi, layonga laye pondjipondjio. Okominya dir kolenya ndo dir sena leye oko onaye. Amen.

Andje dimbuku diekilakele teketa la nzambi shi tshe!
JOANI 3:16

23