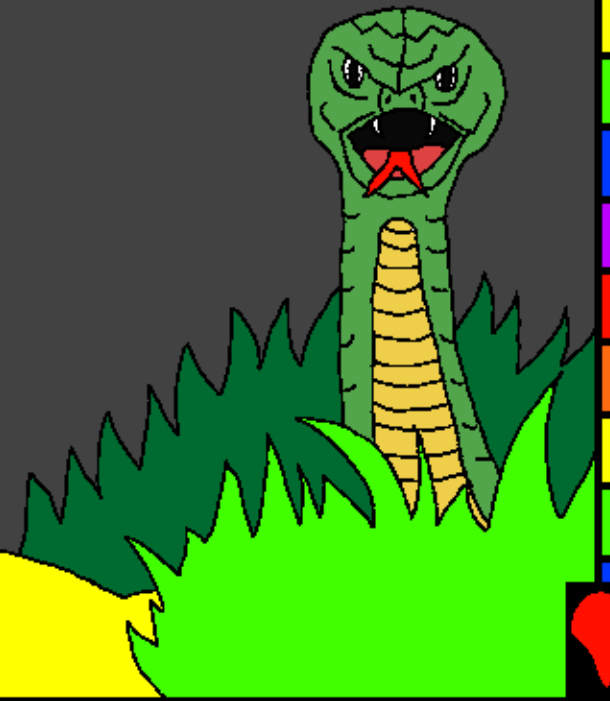


Dibuku d'ekila d'otetela te ana
Woshasha

Etatelu kokeyi
wuntu



Fundama lee: Edward Hughes

Illustré lee: Byron Unger; Lazarus
Alastair Paterson

Mbokoyama lee: M. Maillot; Tammy S.

Kadimolama lee: www.christian-translation.com

Ndja malee (tomba ma lee): Bible for Children
www.M1914.org

©2021 Bible for Children, Inc.

Aka shama malee: Nyeko la okende wa funda ndo
wa sangola koko nyu hanyoto sondja.



Nzambi akatunge tshe
Lamakatunge nzambi umtta
latandu ADAMA nde aka
seme le kamgo ka
EDENA nde la wa
dende EVA ...



... vo wakiko lingeno ngema
wefula wa me nye mzambi
ndo wa ndjala la nde polo
ndo shinye.



Nde akambola
umuntu ate ukunde
unyashongu ku
nyutele ati tanyolekake elua
wetamba tshe wele lekambo kene.
Ku wumuntu akaloya
ulu aliue ate sho
mbeyaka nde elua
wele ekambo kele ...



... unyashungu
aka toko komi
ate ta nyele kake
nduku olua wa malotamba wele
lateyi w, ekambo koyanga
minanda nyutu ko
vo Ku ului akatela
umuntu ali yaa
nyu hanyuvo mete.



Paka ne dia
unyashungu
mbejaka ate loshi
layo nyele asho anyu wa yo
diho ko nya yo yala ako dimi
unyashongu nya yeya
akambo w, ololo ndu
akambo wakolo Wa
kake olui ko wa kale
olua.



Lamakashile EVA mo nya
olembe wa nzambi nde aka
yolesha ADAMA akatone
diande monyala oteketa
wa nzambi.





Asho awo waka diho vo wa
keye vate e taka taka mbeso vo wa kose
aka tshi w, etamba wa fingu waka ya
telela afunga ko vo wa koki loho koso...





... la latuyeleka unyashungu lama
kandeteta ka l ekambo la dikolo ku pami
la wadende wa ka hembu ndjashi lateyi w,
etamba ne dia nde atuku waema.



Lamacaye nzambi la dilo l ekambo nde
akeye kem kaka sale ADAMA nde
la EVA ADAMA aka hangue EVA
ndo EVA aka hangue olui la so
latuyalaka unyashungu aka
tela olui ate omalodikambo
dia kaya tshe ne
mbamboyo ehama
manenu we ...



... ndi akatela umuntu ate dimi layo kufudiya
asui loshi yaye ya demi ndo latuelo caye
kama. Konde akatela ADAMA kete yambo
djana mananu dikambu dia ye ne
dia we aketa wo dioyi da wa
deye ndo akale otamba waka
mo nyose ke te
tanyolekaki omalo
paa mbayoyo

leka mboya
nde shi tshe ya
lumu la ye.





Latoyalaka unyashonga
aka wa tshanye lekambo
KEDENA lamele vo wa
ka shi NKOLO (Fekato)
wa ka kitana la nzambi
ka lumi.



nzambi aka sale lokua la
pemio wedi ehende shimba
etueho kawo l ekambo
latoyalaka unyashungu
aka tshela ...





... ADAMA la wa dende eloto
wa dikuh ko nde akalotsha
omale nde aka kondje
unyashungu
dikuhu.



Malo kongo wa shi motshi ADAMA L EVA
wa kayota ona pami malo Ekima nye la
latoyalaka wa koyota KENA la kushende
ABELE nde akoyala olami w,

ekoko, ku
KENA
akayala
okambi w
ekambo.

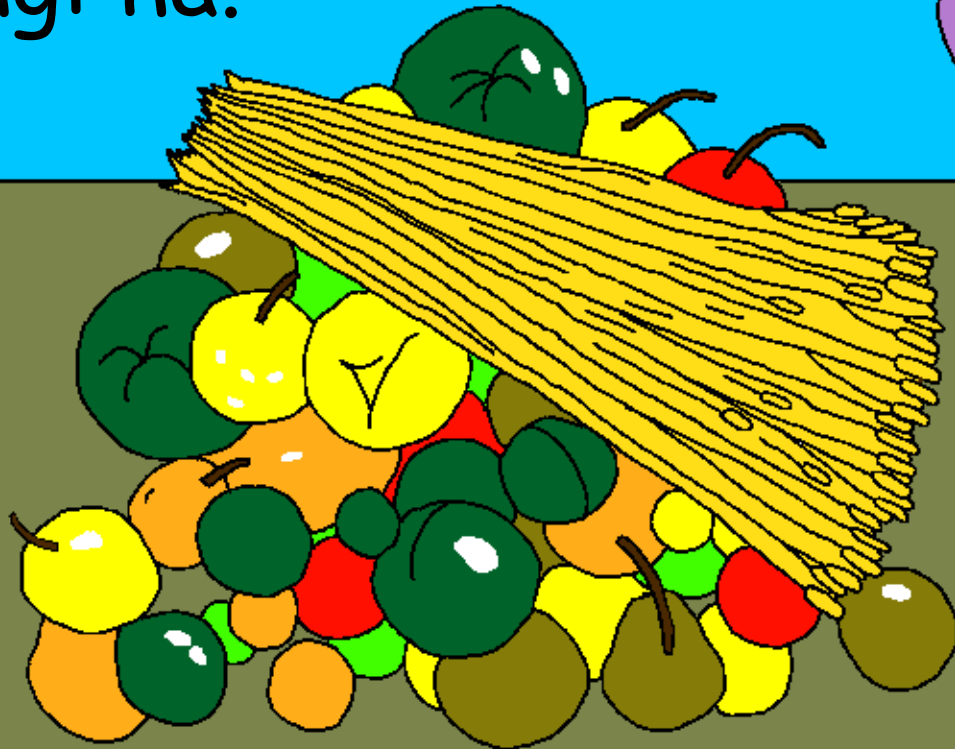


Llam ekete nshimo tshi kena akalambola
latu yala ka elua uma lekambo ndo abel aka
la mbala latoyo laka nundu diana wa myana
a wata uma lu dungalu nga

diandi latulayaka
akangen-
angmala
abel la ulambe
andi.



Kele ndi kongena ngemala kena la ulambu
randi ku kena aka danganila la kele
latuyalaka aka wumbu laati
okoko wama wa danganelaye
la kele ndu ubindi ahindjeye
elungi na.



Kile ka kena koshila lokongo
diku nde lam akiwo lekambo
ndi akamamelo abele
aku diaki.



Latuyalaka akombela kena le ndeli
omamyo abele ku kena aka kaluya
dui ati, ...



... lendeyamina ulami wonale ngu mbemi
oka nzambi aka wote ati lamayo yokamba
kete lamome diamgoyo ha
leka kongonyula diango we
ayoyala yekeko ndo aha
langelo shika.

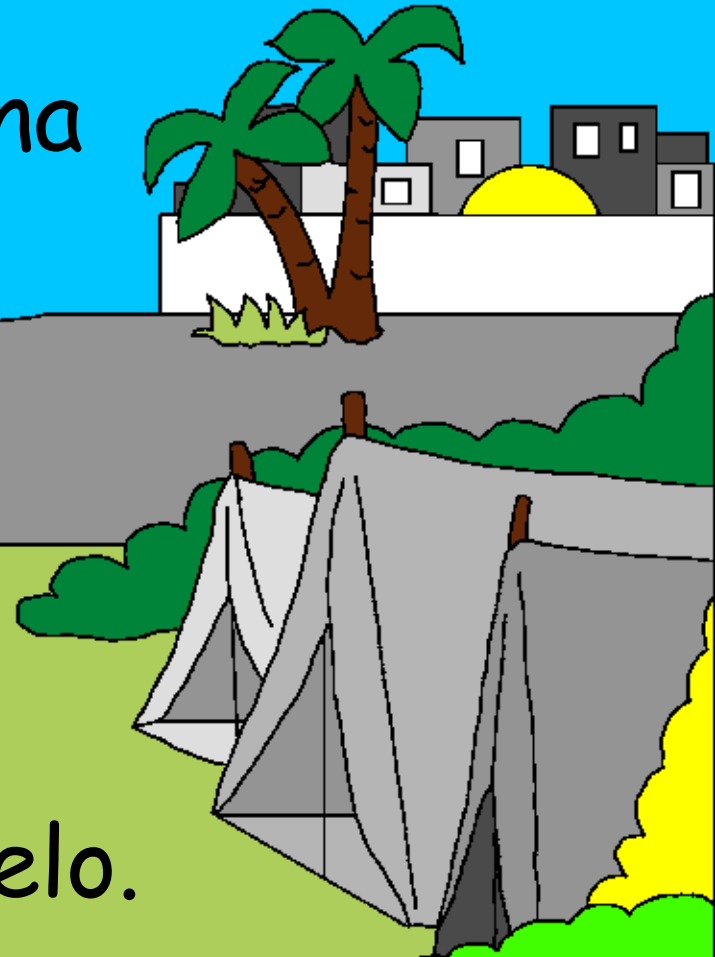


Okone kena akongana la tondo ka
laluyalaka aka tu tshuka wadi omake
adama leva waka tota oma.

Lokongo diku ama wake kena
la ekama wande



waka to
tsha ngelo.



Maka edja dja kumbi kaki adama
leva akafula nelo esadi esadi lo
shisho ato wakasenaka edja
ndeka shinge.



Pafine muana a seth mutandike,
Eva kuakula: Efile mumpe seth
bua kualusha Abel.



Seth fine muntu a lukuminu
mu kukoma 912 bia bidimu
aye kupeta bana bebungi.



Langa ato wakayo nga to dja we di
efula letena tema kakata hata
naka monga loko melo nzambi
aka yo sa ye di ko ya ndanya
andja nyama ...



... tshe la tofudu nzambi
aka nyangi dia tomga umtu
Koko otomo tshi akenama
ohomba la to mdo
kanzambi.



Otaki oki noa lodo ho daki seta
nga aki la sembwe ndoke le
komo nde akake nda ndaka
la nzambi.



Nde akala kanya ndu onande asutu dia
nemiya nzambi kakame (malawo)
nzambi aka lange salela noa
lo woho walande
ndo wo tshi
ki tanyi.



Etatelu kokeyi wuntu

Okondo wotekata wa Nzambi, dibuku
d'ekila

Tanemaka loo

Etatelu 3-6

"Mbotwelo koteketa andekeko kokele."
Esambu 119:130



Komelo



Okondo wone wudibudiekila weko lo
tewoyedia wonyashongo wakisuwekila
latatotonge. Ndo lalanga dia sho mboweya.

Nzambi mbeyaka atesho taki. La etsha wa
kolo wakandete nte pekato. Dilanye dia
pekato ele nyoyi. Koko nzamibi akitolange
otamrniye. Mbakonda tome Etoyi konde
k'ona. Yesus, dia ndjovo l'otrmbre wa
peketagne. Ndo ndanyema dir pekato yaso.
Ko yesus akolo malo nyoyi ko akrkalola lo
paradiso: nakir nyetarir yesus ndo
mbolomba dia nde nyodimanyiyor kolo
yanyu, il nde oyo ditsha nde ayoya! Nda
ayosena lanyu kakiye nda nyu nyayasena
landepondjopondjo.



Norkiwe ambotanyiye wate keso keko mete,
ta kene le nzambi yesus yami, dimi
mbetawoka nteweko nzamibi, ndo we
akayoyala untu dia ndjose lo pekato Yaki, ndo
kakiyane weko lo senaloseno loyoyo.
Lamalangaye yaka loloseno lami, ndo
odimanyiya pekato yami, dia dimi imbeya
kondja loseno loyoyo kakiyane ko loshi
lomotshi, layonga laye pondjipondjio.
Okominya dir kolenya ndo dir sena leye oko
onaye. Amen.

Andje dimbuku diekilakele teketa
la nzambi shi tshe!
JOANI 3:16

