

Dibuku d'ekila d'otetela te ana  
Woshasha



Olongu kiti  
kololo dolelu  
dia wanga  
shongu



Fundama lee: Edward Hughes

Illustré lee: Lazarus  
Alastair Paterson

Mbokoyama lee: Sarah S.

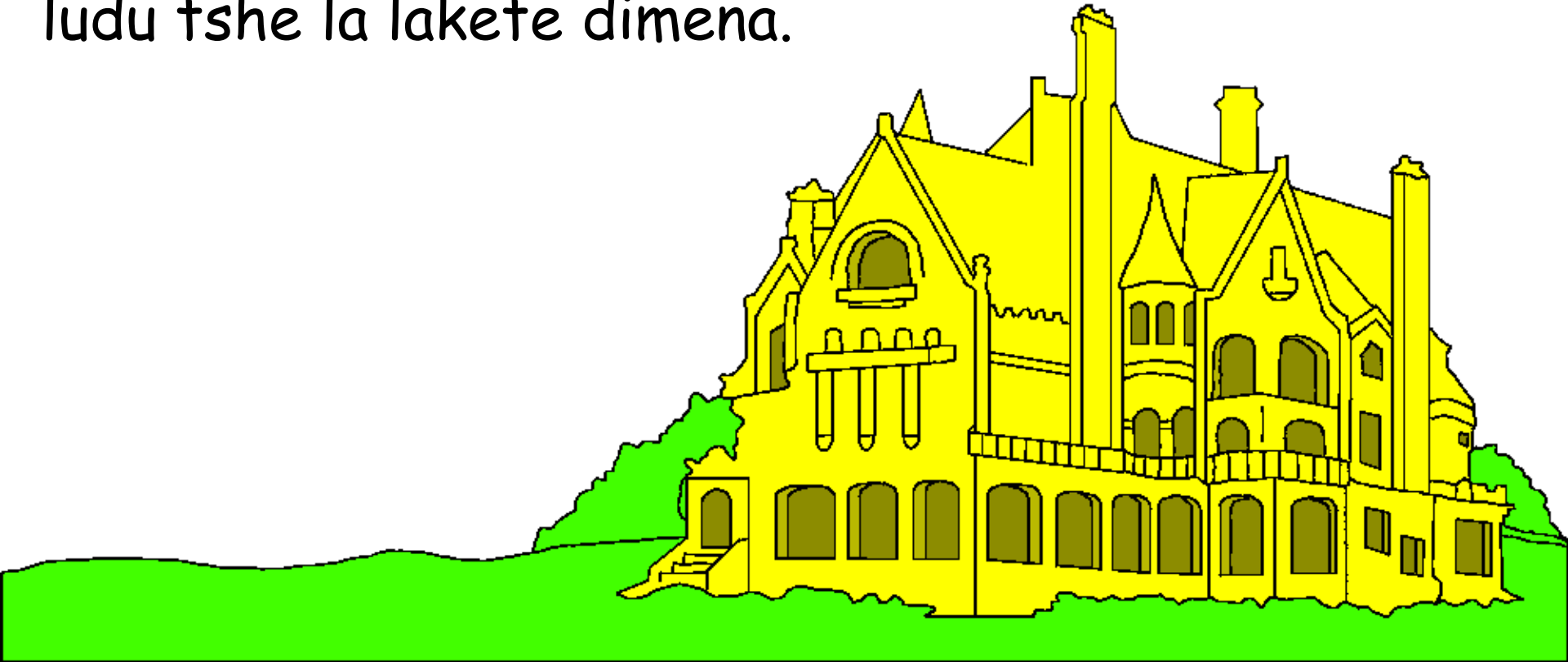
Kadimolama lee: [www.christian-translation.com](http://www.christian-translation.com)

Ndja malee (tomba ma lee): Bible for Children  
[www.M1914.org](http://www.M1914.org)

©2021 Bible for Children, Inc.  
Aka shama malee: Nyeko la okende wa funda ndo  
wa sangola koko nyu hanyoto sondja.



Lamaka semaka yesus nye nde akate ka weteka ludu  
la papa laki lasoko efula leko soko eko ludu la woke  
ndo ladi mema, ulungu ndeka woke ndo ndeka oseka  
ludu tshe la lakete dimena.



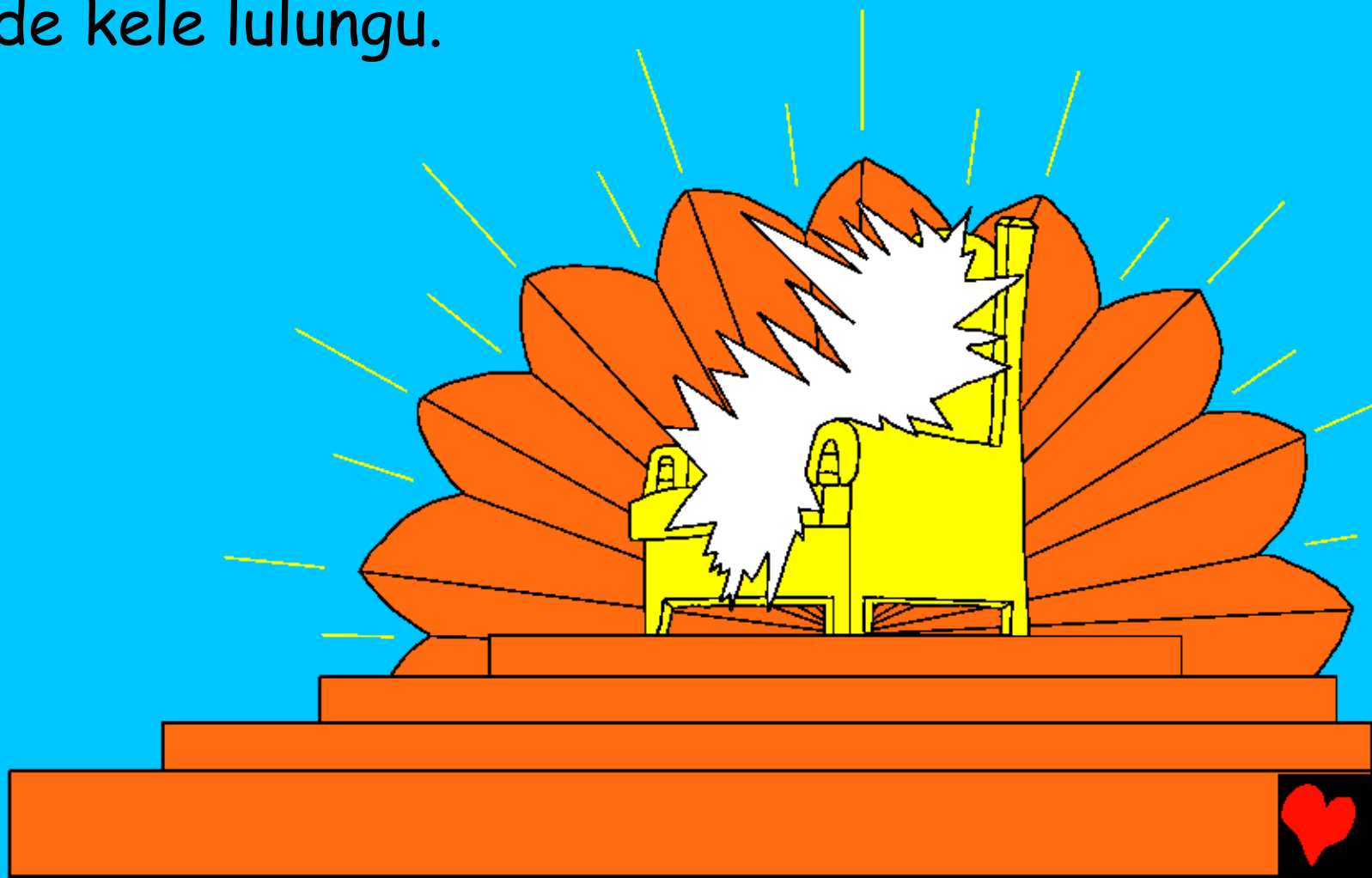
Yesus ate dimi layo kolo ngosole dihole komaka lambokolongo sole dihole dimi layoya ndo layoyo kosa. Yesus akade lulungu malokongo wa eluelo ka nde malo nyayi. Lamakenda ka ambeki ande yesus akosama ko dinge dia wanganya la loseno la la kete.



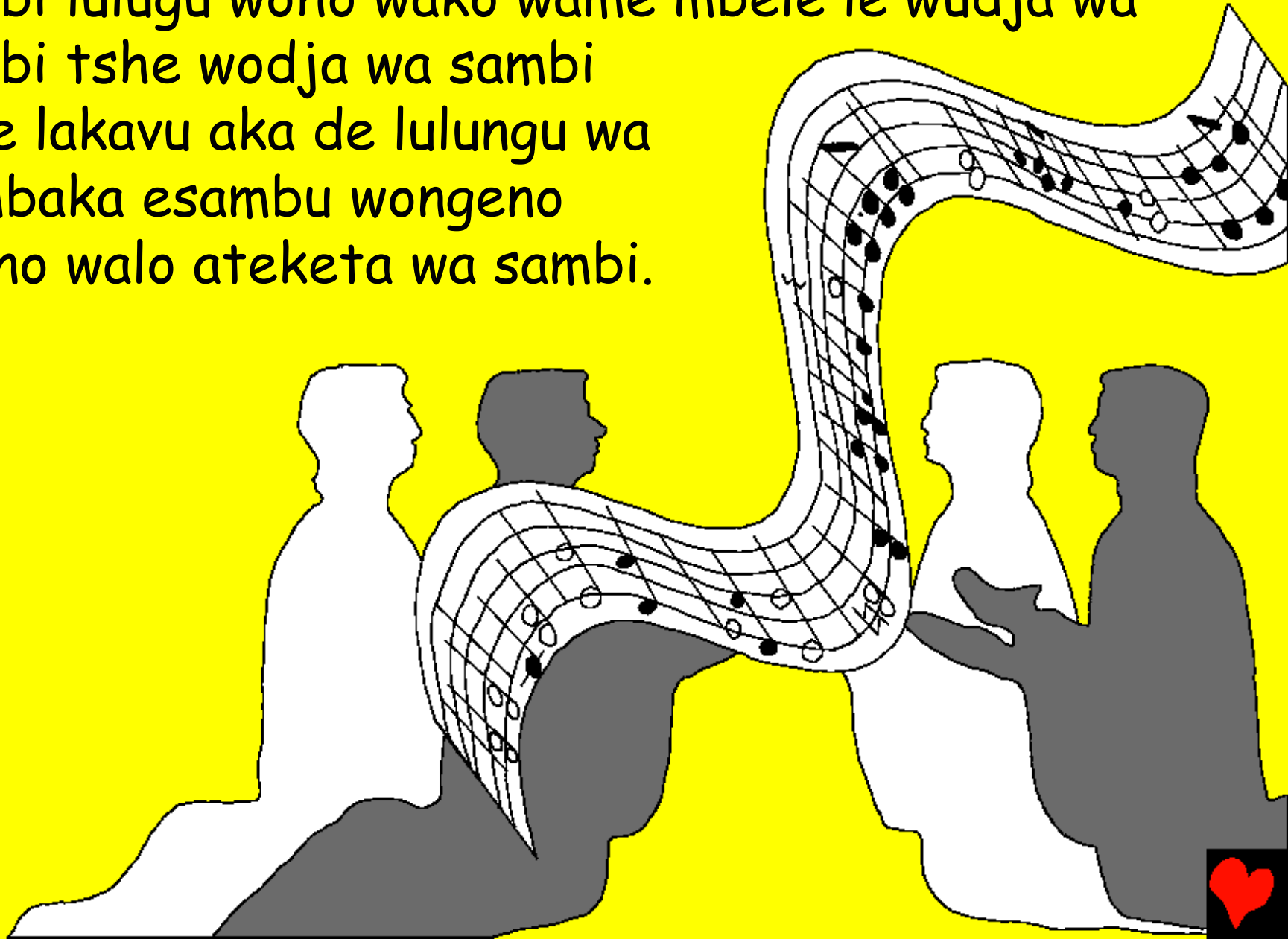
Make djedja ambeta wodi mbolo ka daka da yesus  
dakanda lake ate layoya ndjo nyosa yesus akate ate  
layoya sha shi mayo lo wenya wahamyateya  
kongande wayo yala le ambeta wo di  
wakavu to ndjo ka yesus ndja,  
bible ekombita ate vo wayonga  
leme ayonga yesus. Oshi  
shuelo ele ndjala kame  
la wonya sho ngu  
lu nyuma.



Enyelo le joani, mukanda wako melo walu bible  
toteka woho wa kona wele ulungu eko dimena.  
Dikambu dialeki ohomba ele la woho woleki dimena  
ulungu eko ludu la sambu, sambu eko ahole tshe koko  
kiti kande kele lulungu.



Andjelu la wehu akina wa tooto weko luto mbula  
sambi lulugu woho wako wame mbele le wudja wa  
sambi tshe wodja wa sambu  
tshe lakavu aka de lulungu wa  
kembaka esambu wongeno  
ngeno walo ateketa wa sambu.

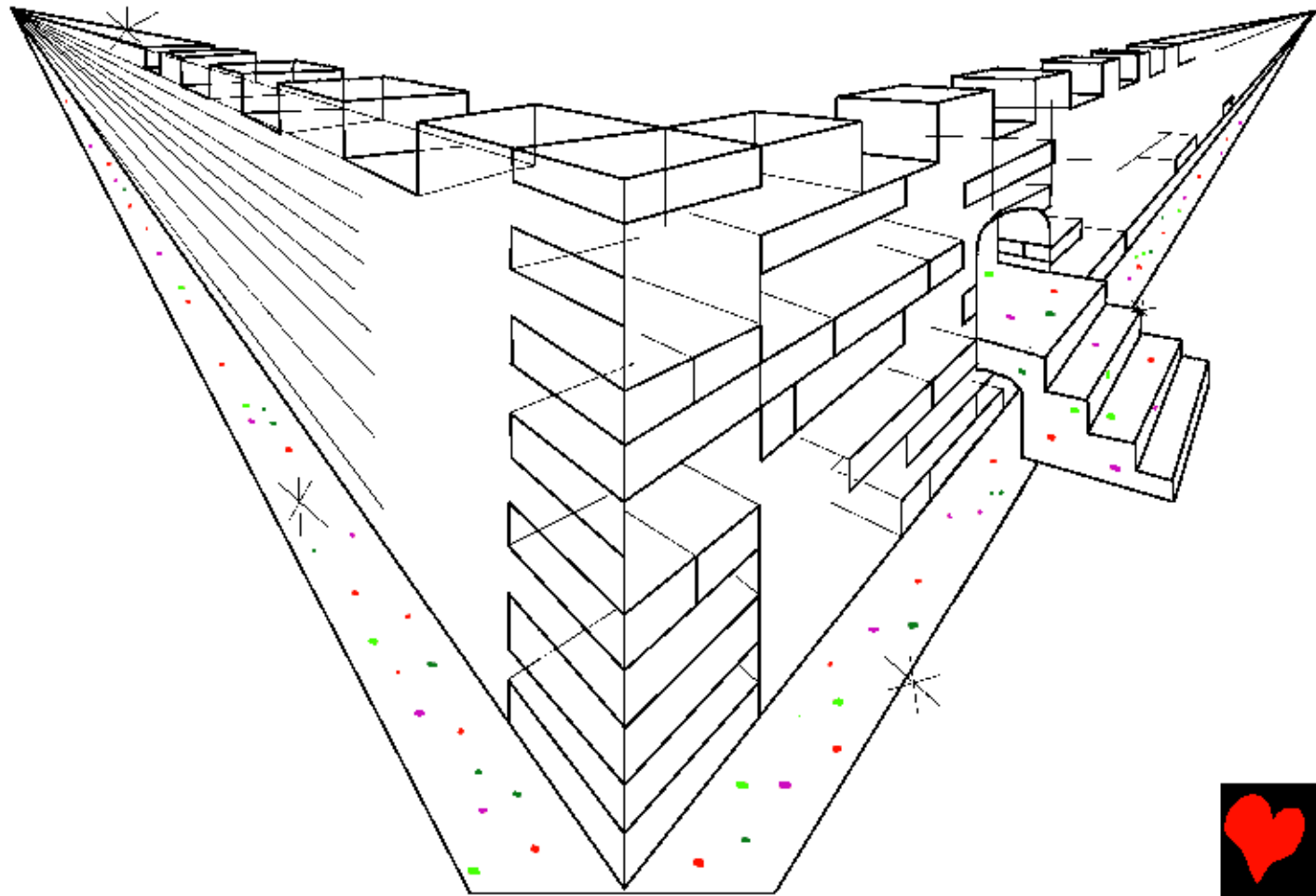


Nye nde ateketa emo tshi wa kembo ya ka  
wembaka: weko lanemo ne da we akato tshungola  
omale sambu malo dikila dia ye  
ndo malu diuhu datu latu ndu  
wodja we akatondja kuna ya  
dikanga ndu esambisha wa  
wunyashungu  
aso (etsha  
wa tomami  
chap :5).

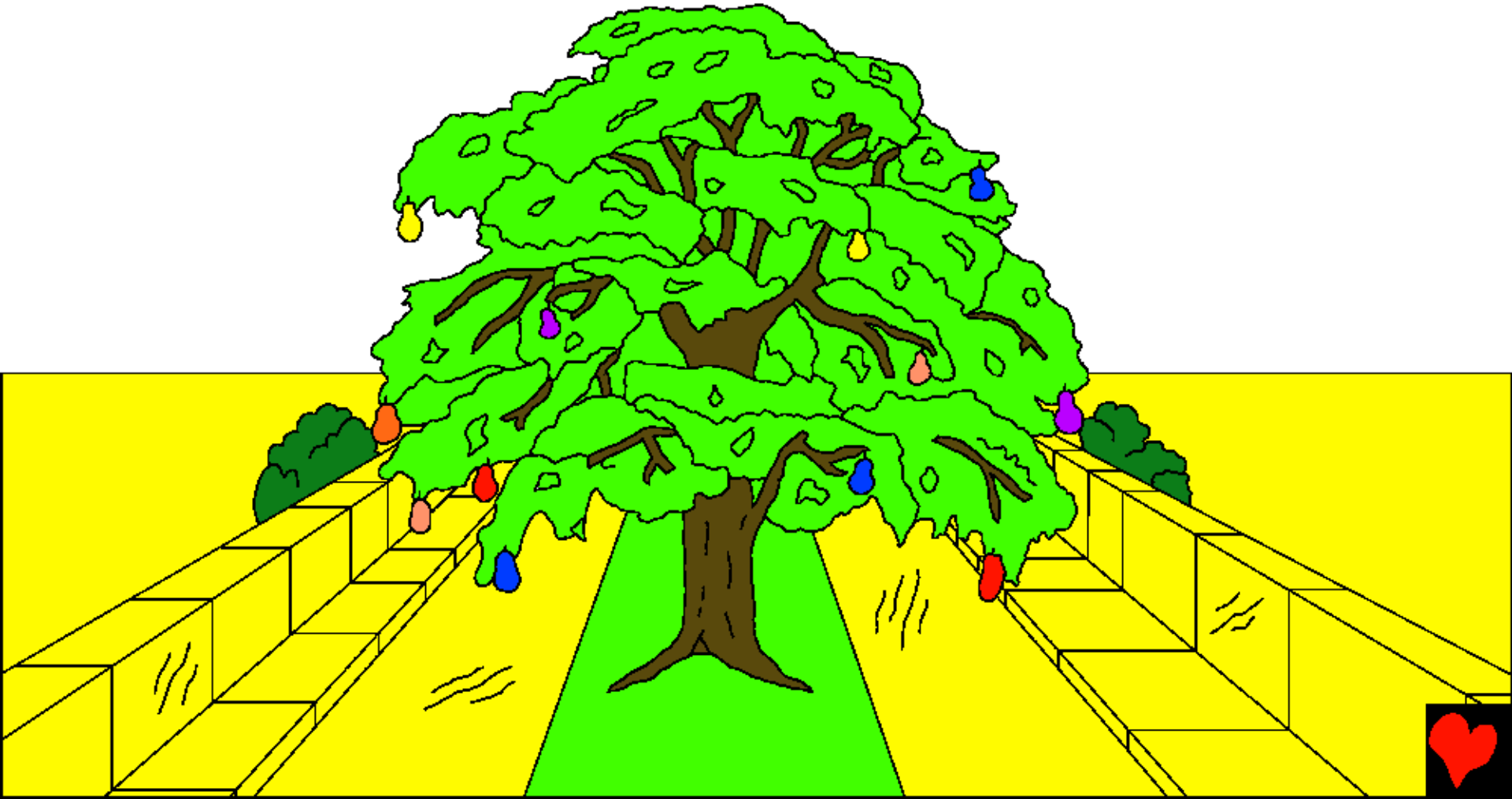




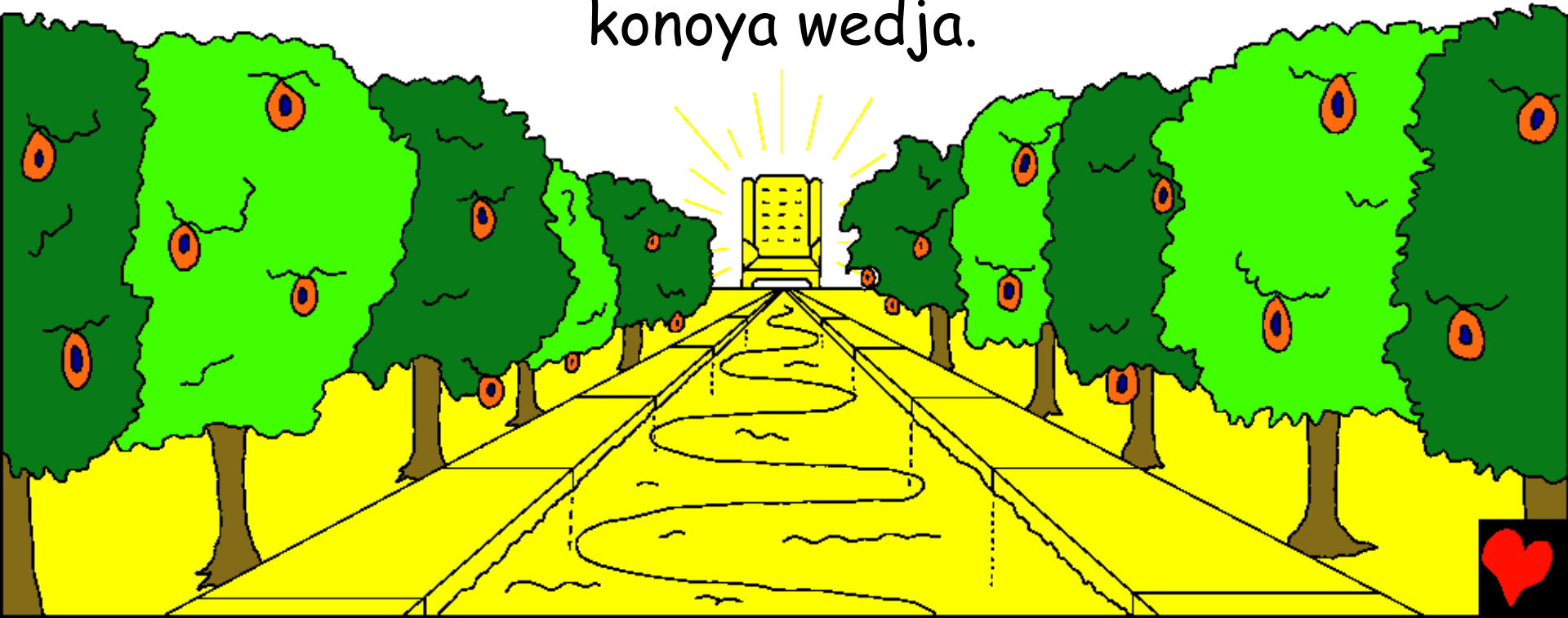
Lodikatshi dekomelo lo mukandi wekila menyeka  
ulungu oku "Jerusalema yuyuyu" eko woke wake  
efula, la ehele kotale landja to. Ehele keko la wave  
wangadi angadi ko mbame letatelu kaheke oseka  
lukuke tshe  
la lusunba  
akatsha ma  
woho otoyé.



Kuke yayo ya wete hoyo dihamaka tooto kele tende lameso ... wow! Paradiso eko to dimema efula leteyi osomba aka salema la wave wakeso, oko tovere tawema koyanga otadimbu weko la mboko ya keso.



Okedi wadimema ndi wawema washi wa lo semo weko lokela lo kiti ko diolelu dia nzambi wedi la wedi wokedi akatema maka osungu wa lumu, la kata nema mbala katondo le kambo ka edena. Osungu waki la memo efula vo wakatokaka weho dikimi le hende welda wotshiki tanyi, weho wo tshikitanyi longo ndo ngondo ko akatshi wota mbako wa lumu waki dia konoya wedja.



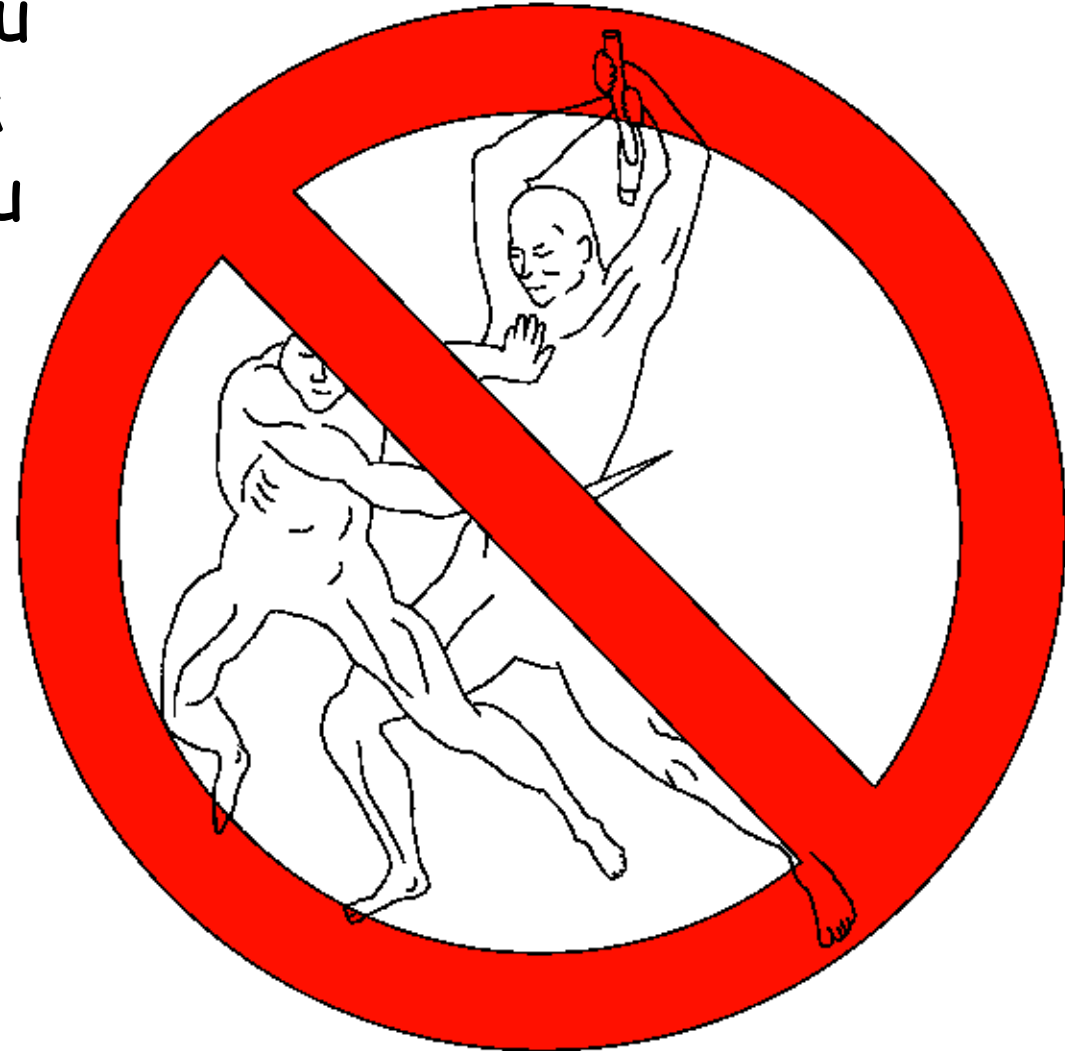
Ulungu bu lohombawa wunya ndo wa ngondo dia vo nga mula. Lutu mbu ladimena la nzambi mboko mbasama losase wongeno ngeno leko otsho kema.



Ko ya nga nyama yalo paradiso tshiki tama. Vo tshe weko tshi-tshi ndo angenyi wa mbolo le ekoko wakasemaka lo lelo wadiyo dihole otoyi kaya nga nka yaki la welo wa ka le kaka eseka wa lolenge oko wa ngombe. Wonya shungu akate ate hawoto ho mwanje kama ndanya engo kele la diku dia dikuna dekila.



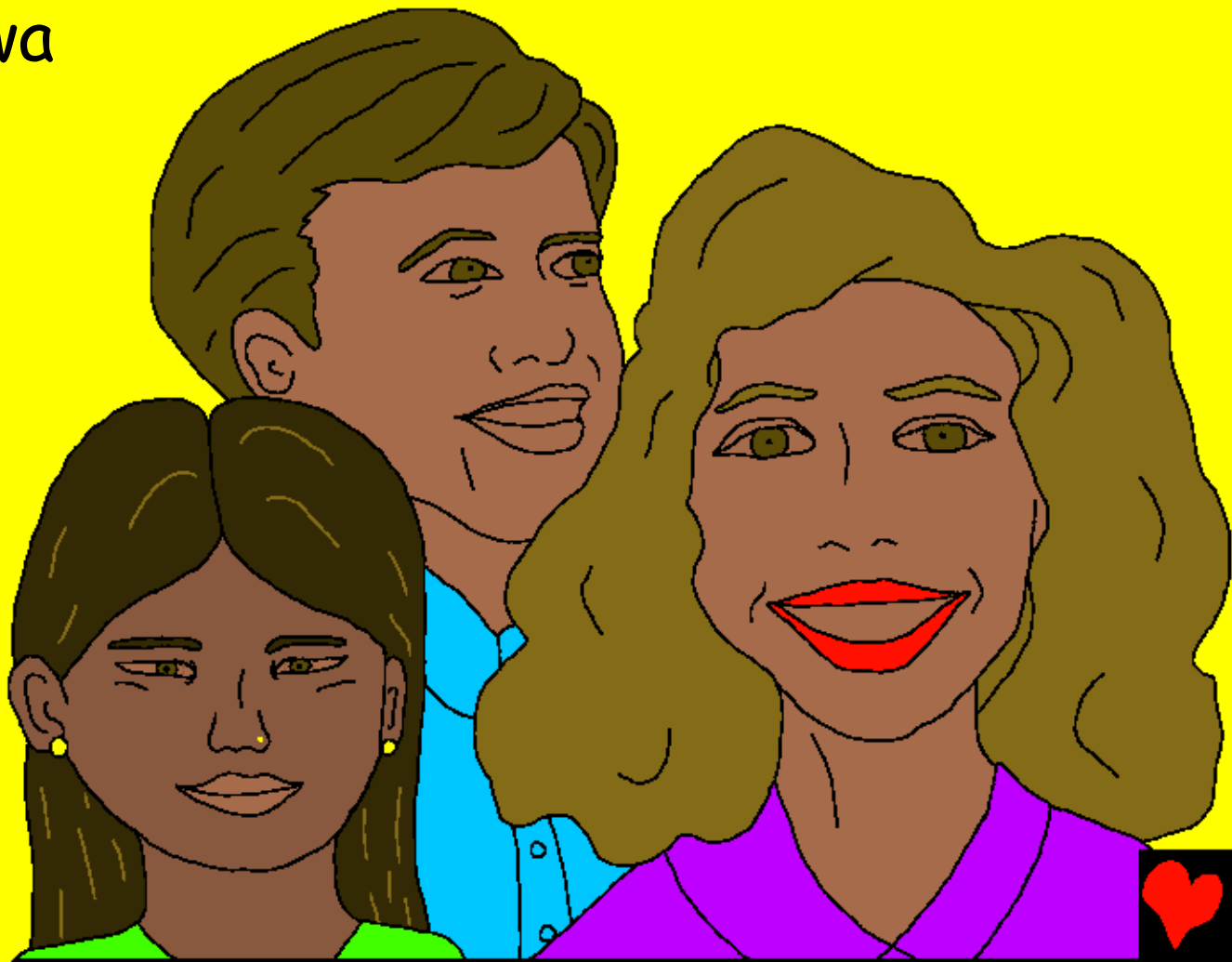
Lomenda lateyi tekolo mena dia dango dimo tshe deka lo pombo ma lulungu ndoku oteketa wakele wakoka ma lulungu. Ndoku untu lalo taa kana ndjala la lokaki ndoko kokomo lo wakuke ne dia wivi bu lo lungu ndoku amdja kanyi ululungu, akanga waloka kana kanga wangala, ndoko pekoto otoyika woho tshe lolungu.



Lulungu le nzambi  
nduku asoyi (delu)  
mbala motshi wodja  
wa nzambi wekondela  
lakambo wa nyangu ya  
weke ya lo lodemo.  
Lulungu wonyo shungu  
ayokito la asoyi tshe  
wa lo washo.



Ndoko nyoyi lulungu amtu wa nzambi wa yoyala  
pondjo pondjo la wonya shongu, nduku lo nya ngu  
ndoko asayi ndoko ekakitula melu, ekundelu bu  
ato tshe lulungu weko  
longeno ngeno wa  
pondjo vo la  
**NZAMBI.**

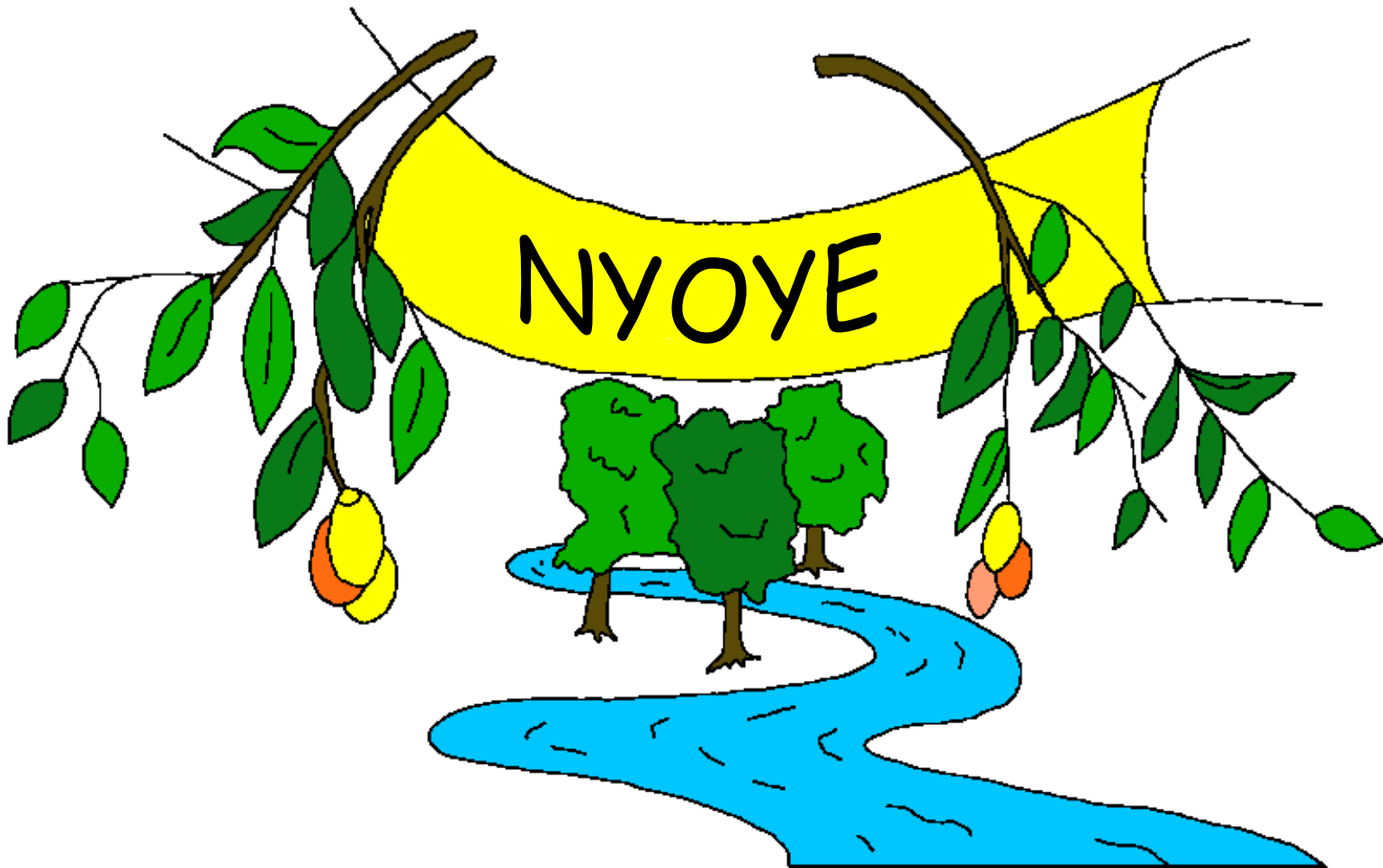




Kikina too paradiso keko le apami ndo ana wa  
wamatu ndo le diku manyu too wa ne wa keta woyama  
le yesus christo oko oshimbedi awo ndo mbolenya  
oko wonyasho ngu owo. Lulungu eko dibuku da  
kawetaka vate dibuku da lumu dona  
okoko akalole lakombo efula y'ante  
onde nyu mbeyaka kombo ya  
kafunda ma loko ele  
kombo yatu tshe  
weke kumutuma  
yawo le yesus onde  
lokombo lakiye  
leko loko?



Eteketa wa ko melu walu BIBLE lodika mbu d'ulungu  
eko leta longeno ngeno ndo nyuma ndo otshu kanyi  
mbitaka vate yaka one loka leeta ndo one lele la posa  
aye ndo one la kombola ayose ashi wa lumu  
WOSOSA.



Olongu kiti kololo dolelu dia wanga shongu  
Okondo wotekata wa Nzambi, dibuku d'ekila

Tanemaka loo

Joani 14; 2 Koreto 5;  
Enyelo Le Joani 4, 21, 22

"Mbotwelo koteketa andekeko kokele."  
Esambu 119:130



Komelo



Okondo wone wudibudiekila weko lo tewoyedia wonyashongo wakisu wekila latatotonge. Ndo lalanga dia sho mboweya.

Nzambi mbeyaka atesho taki. La etsha wa kolo wakandete nte pekato. Dilanye dia pekato ele nyoyi. Koko nzamibi akitolange otamrniye. Mbakonda tome Etoyi konde k'ona. Yesus, dia ndjovo l'otrmbre wa peketagne. Ndo ndanyema dir pekato yaso. Ko yesus akolo malo nyoyi ko akrkalola lo paradiso: nakir nyetarir yesus ndo mbolomba dia nde nyodimanyiyor kolo yanyu, il nde oyo ditsha nde ayoya! Nda ayosena lanyu kakiye nda nyu nyayasena lande pondjopondjo.

Norkiwe ambotanyiye wate keso keko mete, ta kene le nzambi yesus yami, dimi mbetawoka nteweko nzamibi, ndo we akayoyala untu dia ndjose lo pekato Yaki, ndo kakiyane weko lo senaloseno loyoyo. Lamalangaye yaka loloseno lami, ndo odimanyiya pekato yami, dia dimi imbeya kondja loseno loyoyo kakiyane ko loshi lomotshi, layonga laye pondjipondjio. Okominya dir kolenya ndo dir sena leye oko onaye. Amen.

Andje dimbuku diekilakele teketa la nzambi shi tshe!

Joani 3:16

