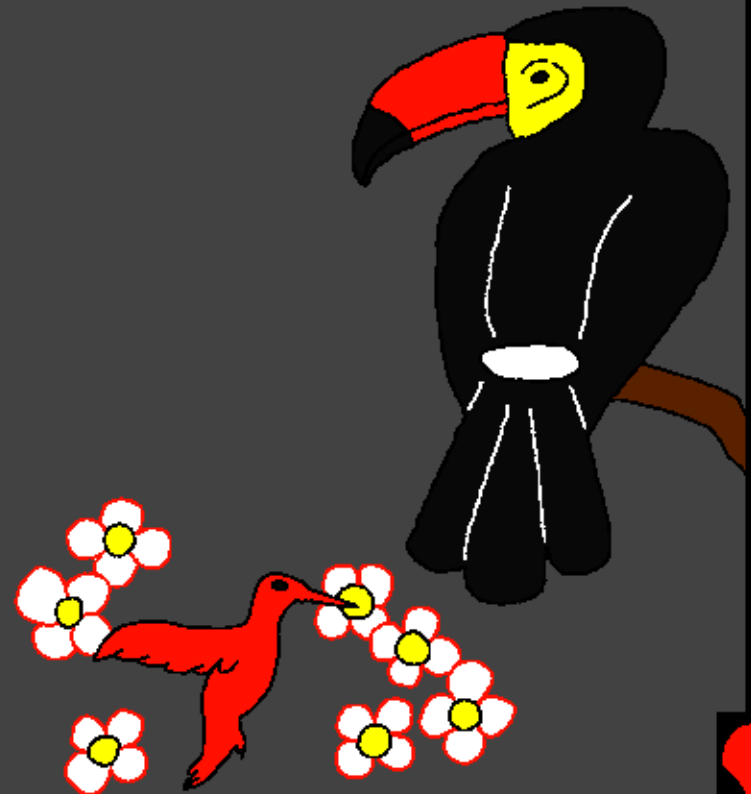


Chapang ho Bible
Tahlahna

Pathien in imazouse
asiemlai in



Asundoh-a pang: Edward Hughes

Muthei'a hilchetna bawl-apang:
Byron Unger; Lazarus; Alastair Paterson

Aguongtuoh-a pang: Bob Davies; Tammy S.

Athu-ledoh-a pang: Dr. Seikholun Singsit

Apodoh-a: Bible for Children
www.M1914.org

©2020 Bible for Children, Inc.

Phalna: Nangma'n hiche thusim hi sumkawveina ding ahilou pou
leh nalah doh theina le tadohtheina phal ahi.



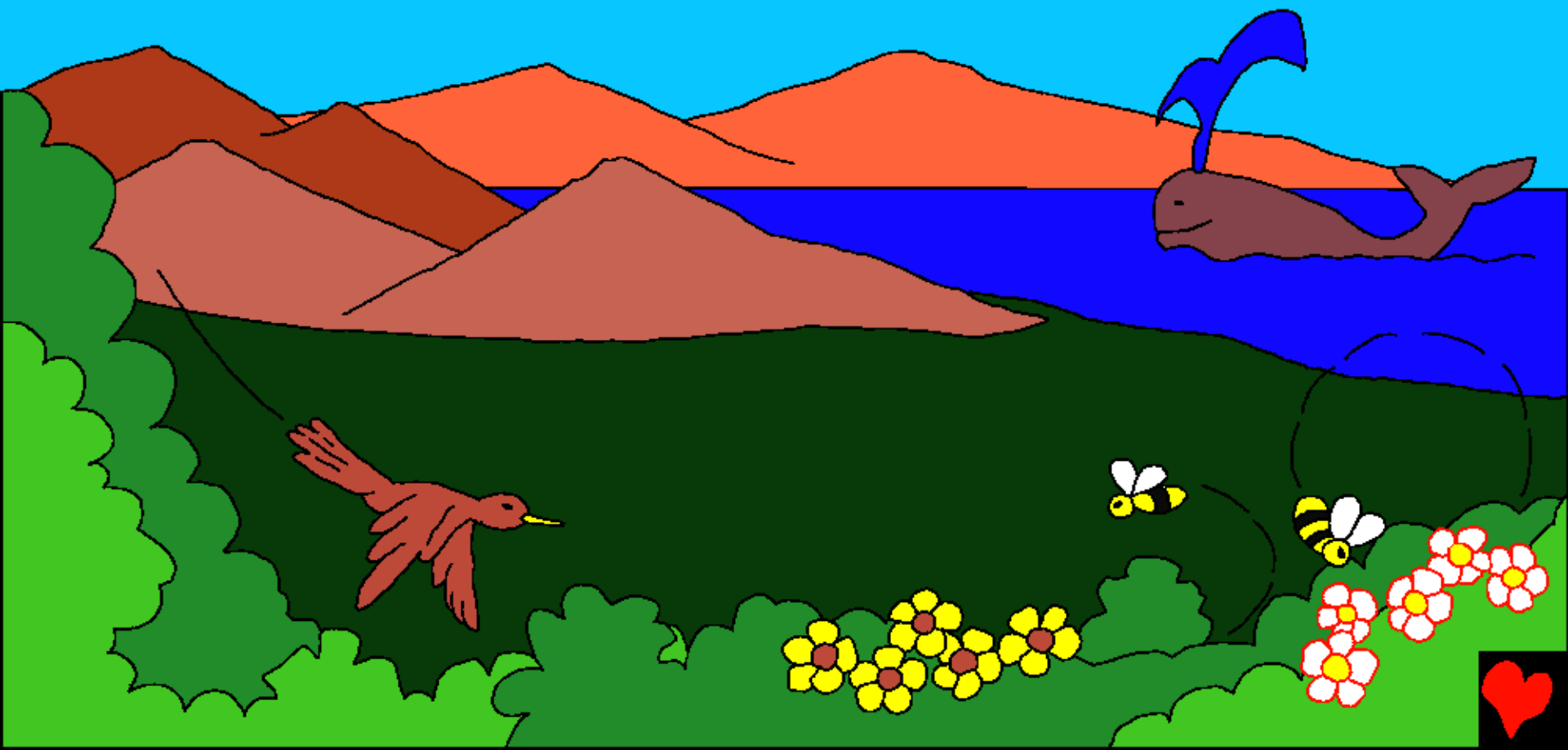
Koiham eiho eisiem'a? Pathien thu, Bible, in mihiemte
hung kuondoh na eihil un ahi. Malai in Pathien in
mimasapen khat asiem in chule amin Adam asah e.
Pathien in Adam chu leisiet-leivuy-a kuon in asiem in
ahi. Pathien in Adam chu hinna-hu ahaikhum in
ahile ama mihing ahing ahitai.

Eden kiti huon hoitah
sung'ah Adam chu


a-um in ahi.



Pathien in Adam asiem masang in Ama'n vetnuom
umtah leisiet A-siem in, asung'a thil kidang tamtah
A-siem in ahi.



Abanban cha'n Pathien in muol-le-lhaang ho chule
phuoi-gam mun-awng ho, pahcha gimnamtuy ho chule
thingphung lientahtah ho, vacha mul-hoitah tah ho
chule khuoiho, ngapi lien tah tah kitawlle ho chule
tuilung-naal ho A-siem in ahi.



Thilsiem a-um zouse hi
atahbeh-a Pathien
siem ahi.

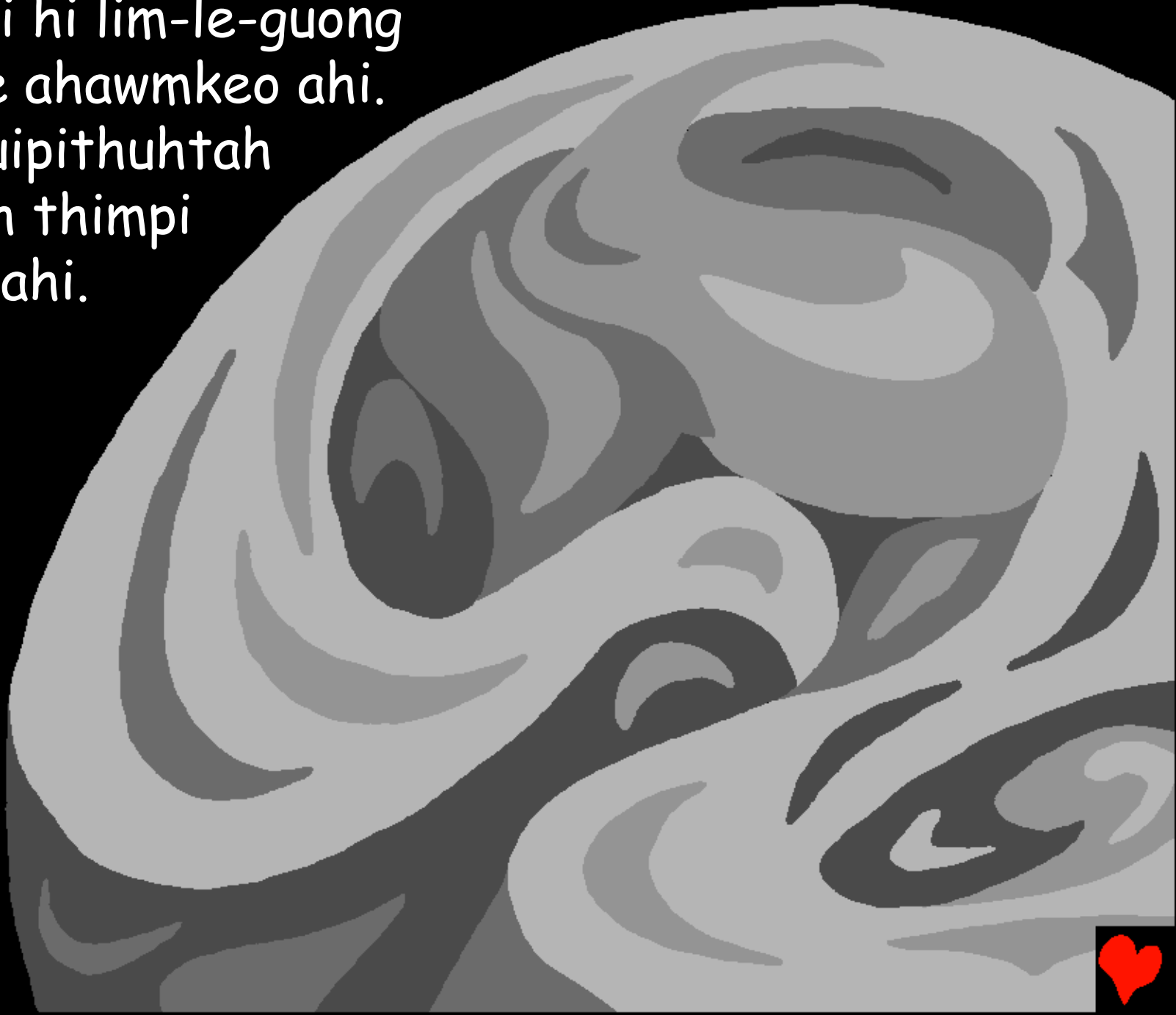
Atyl-abul in, Pathien in imacha Asiem
masang chun, Pathien tai lou imacha
a-um poi. Mihiemte hihen gam
ho hihen thil kiti mawng
mawng a-um'a a-um poi.
Imacha umlou ahi. Vah
zong umlou, muhim
zong umlou. Chunglam
zong umlou anuoilam
zong umlou. Janhi kiti
zong umlou, jing kiti zong
ana umpoi. Chulai chun kipatna
umlou Pathien bou a-um in ahi. Chuin
Pathien in nna atongpan ta'n ahi!



Akibul pattyl in, Pathien in
Vanmunho le Leisiet asiem in ahi.



Chule lei hi lim-le-guong
neilou le ahawmkeo ahi.
Chule tuipithuhtah
chung'ah thimpi
ajing in ahi.
Chuin
Pathien
in, "Vah
umhen"
Ati.



Hichun vah a-um ta'n ahi. Pathien in vah chu
Khuovah asah in chule muthim chu Jan asah e. Chuin
nilhah a-um in chule jingkhuo avah in hichu niikhuo
masapen ahi.



Niikhuo nyna in Pathien in leichung'a tuijaotah ho le
tuikhanglien ho chule dyl ho A-guontuoh ta'n ahi.
Niithumna in, Pathien in "Mun-go mun umhen" Ati.
Chuin mun-go a-umtai.



Pathien in, hamhing ho le pahcha ho chule hamphung
ho chule thingphung ho kehdoth hen Ati. Hichun
hiho chu akehdoth ta'n ahi. Chuin
nilhah a-um in chule
jingkhuo avah in hichu
niithumna ahi.



Chuin Pathien in nisa le
lhathah chule ahsi tampi koima
simzoulou asiem in ahi. Hichun
nilhah a-um in chule jingkhuo
avah in hichu niilyna ahi.

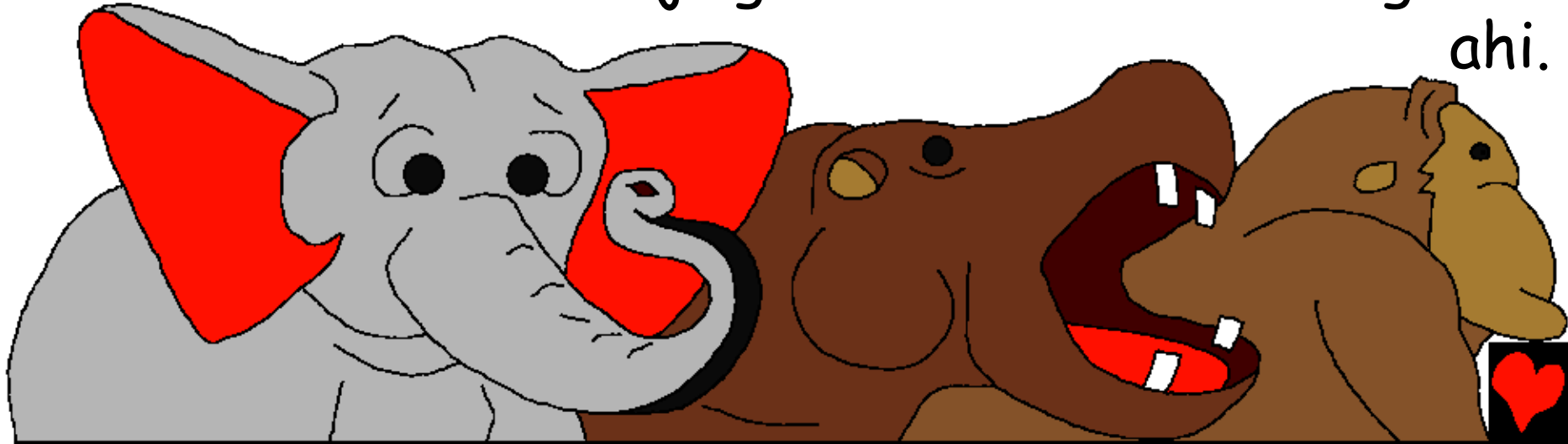


Tuikhanglien-a nga-tintang ho
chule chungleng vacha hicheng
hi Pathien in Asiembe ding
ho chu ahiuve. Nii-ngana in
Nga-thing-ad nei lien hole
nga-hah ho, chule vacha
keengsao ostrich ho le vasilih
humming bird ho asiem in ahi.
Pathien in tui lah-a cheengdim
ding ngatintang, chule tuolgo
lah-a le tuikhanglien sung chule
vaan'a zalen ding chungleng
vacha chikim A-siem in ahi.
Hichun nilhah a-um in jingkhuo
avah in hichu nii-ngana ahi.



Hichengse akichai phad in Pathien in, "Leisiet in ganhing chikim seepdoh hen" Ati. Hichun sa tintang le ganhing chule tuol'a kithol ganhing tintang a-pieng ta'n ahi. Hiho lah-a chun tuol kiliing hiel'a lamjot ding saipi ho chule sa-tuilud kisalet ho a-um in ahi. Jong-khanse hole o-le chatmo ho. Lung-tawl ho, chule julei-biengboh ho. Sa-ngawng-sao saang ho. Chule mengcha-opchieh ho. sa-tintang zouse hi Pathien in hiche niikhuonia hi A-siem ahi. Hichun nilhah a-um in jingkhuo avah in hichu niigubna

ahi.



Hiche niigubna-a hin Pathien in achuombeh in thil
khat zong abawl in ahi. Mihiem-a ding in imazouse
phasadiem in a-um ta'n ahi. Chua chun mihiem

kintuoh ding lougam'ah
neh-le-chah chule mihiem
zenle ding sa-tintang
a-um in ahi.



Chule Pathien in, "Eiho'n eiho lim-le-mel in mihiem
khat siem'ute. Ama leichung'a umzouse chung'a
thunei neihen" Ati. Hitichun PATHIEN IN AMA

LIM-LE-MEL IN MIHIEM
ASIEM E; AMA CHU
PATHIEN IN AMA
LIM-LE-MEL'A
ASIEM AHI ...



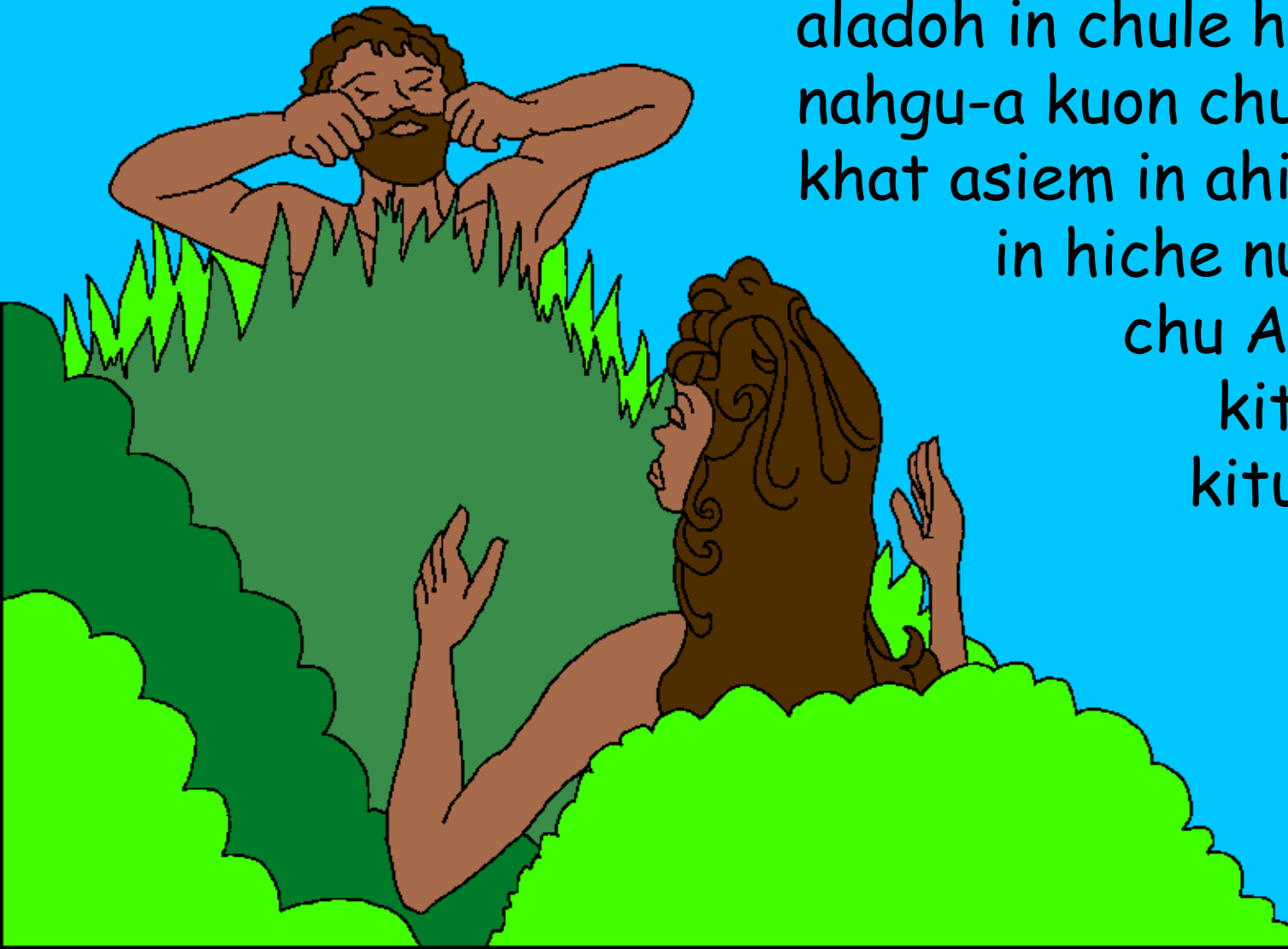
Pathien in Adam
jah-a, "Huon
sung'a um naneh
nuom chan ne
in. Ahivang in
sie-le-pha hedtheina
thing'a vang neh
in. Theiga khu
naneh-a ahile
thawnlou-a
nathy ding ahi" Ati.



Chule Pathien Yahweh (LORD) in, "Mihiem achang'a a-um aphapoi. Keima'n a-kithuopi ding khat siem ing'e" Ati. Pathien in Adam hieng'ah chungleng vacha hole gamsa ho zouse A-hinpuy in ahi. Adam in amaho chu aminvo suoh key tai. Chutia abawlthei chu michingtah hiding ahi. Ahinla Adam in akithuopi ding chungleng vacha ho lah chule gamsa ho lah-a amu tapoi.



Pathin in Adam chu
a-ihmumilsah in
A-ihmumilpa nahgu khat
aladoh in chule hiche
nahgu-a kuon chun Numei
khat asiem in ahi. Pathen
in hiche numei asiem
chu Adam ding'a
kithuopi ding
kituohtah ahi.



Pathien in niigub sung in imamzouse
asiemchaisuoh in ahi. Chuin Niisagy nii chu
pathien in phatthei abuooh in chule hiche nii
hi chawlngah-nii in asiemtai. Eden huon-a
chun Adam le aji, Eve, chun Pathien thupieh
anitlhon in kipana hinkhuo chamkim
amang lhon e. Amany ngaichad pie-a
le a-guol-neisun-u chu Yahweh
(PAKAY) ahi.



Pathien in imazouse asiemlai in
Pathien thu Bible-a, kuon thusim,
akimu na hi

Siemtylbu bung 1 le bung 2

"Nathu-a sunglhah hin vah a pie."
Psalms/Labu 119:130



Akichai tai



Hiche Bible thusim hin eisiempa-u Pathien
akidanje leh nang in ama naheddoh ding deina thu ahil in ahi.

Pathien in chawnsiet ati, thilphalo eiho'n ibawl'u hi Ama'n ahe-e.
Chawnsiet man talien chu thyna ahi, hizongle Pathien in nangma
na-ngailut behseh jeh in Achapa neisun, Jesu, chu nangma chawnsiet
jeh-a thigpel'a thy ding le talien manding'a A'hinsawl ahi. Chuin Jesu
chu thyna-a kuon in ahingdoh in chule Vaan-gam inn juon in achie tai.
Nangma'n Jesu natahsan'a chule Ama hieng'a nachawnietna ho ngaidam
na-thuum'a ahile Ama'n na-ngaidam ding ahi! Ama hung'in tin nalung
sung'a cheengpai ding chule nangma tuonsod-gei-a Amato nahin ding
ahitai.

Nangma'n hiche hi thu-tahbeh ahi ti natahsanle, Pathien hieng'a hiti hin
tao in: Ka-ngai Jesu, nangma Pathien nahi ti katahsan'e, chule keima
chawnsiet jeh-a thy ding in miheim in nahungpieng in, chule tu hin nangma
na-hing kid tai. Lungsiet tah in kalung sung'a hung cheeng in chule
kachawnsietna ho ei-ngaidam in, chutile keima'n tua hi hinkhuothah kanei
ding, chule nikhat tiengle nangmato tuonsod-a ka-um ding ahi. Nangma
thu-a nung ding le nacha khat bang'a hing ding in eikithuopi in. Amen.

Bible ni-siehle sim in lang chule ni-sieh in Pathien
to kihou zing in. John 3:16

