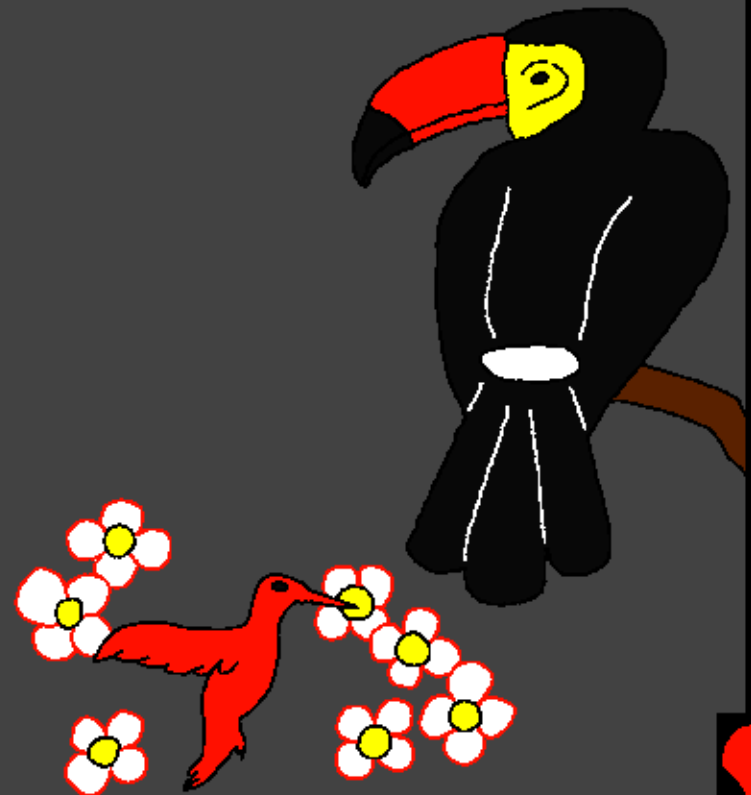
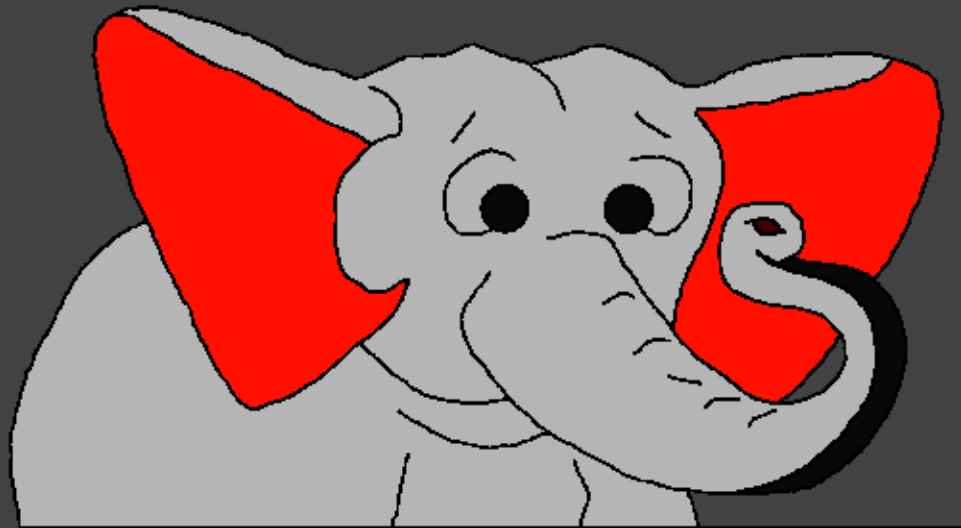


# Chapang ho Bible Tahlahna

Pathien in imazouse  
asiemlai in



Asundoh-a pang: Edward Hughes

Muthei'a hilchetna bawl-apang:  
Byron Unger; Lazarus; Alastair Paterson

Aguongtuoh-a pang: Bob Davies; Tammy S.

Athu-ledoh-a pang: Dr. Seikholun Singsit

Apodoh-a: Bible for Children  
[www.M1914.org](http://www.M1914.org)

©2020 Bible for Children, Inc.

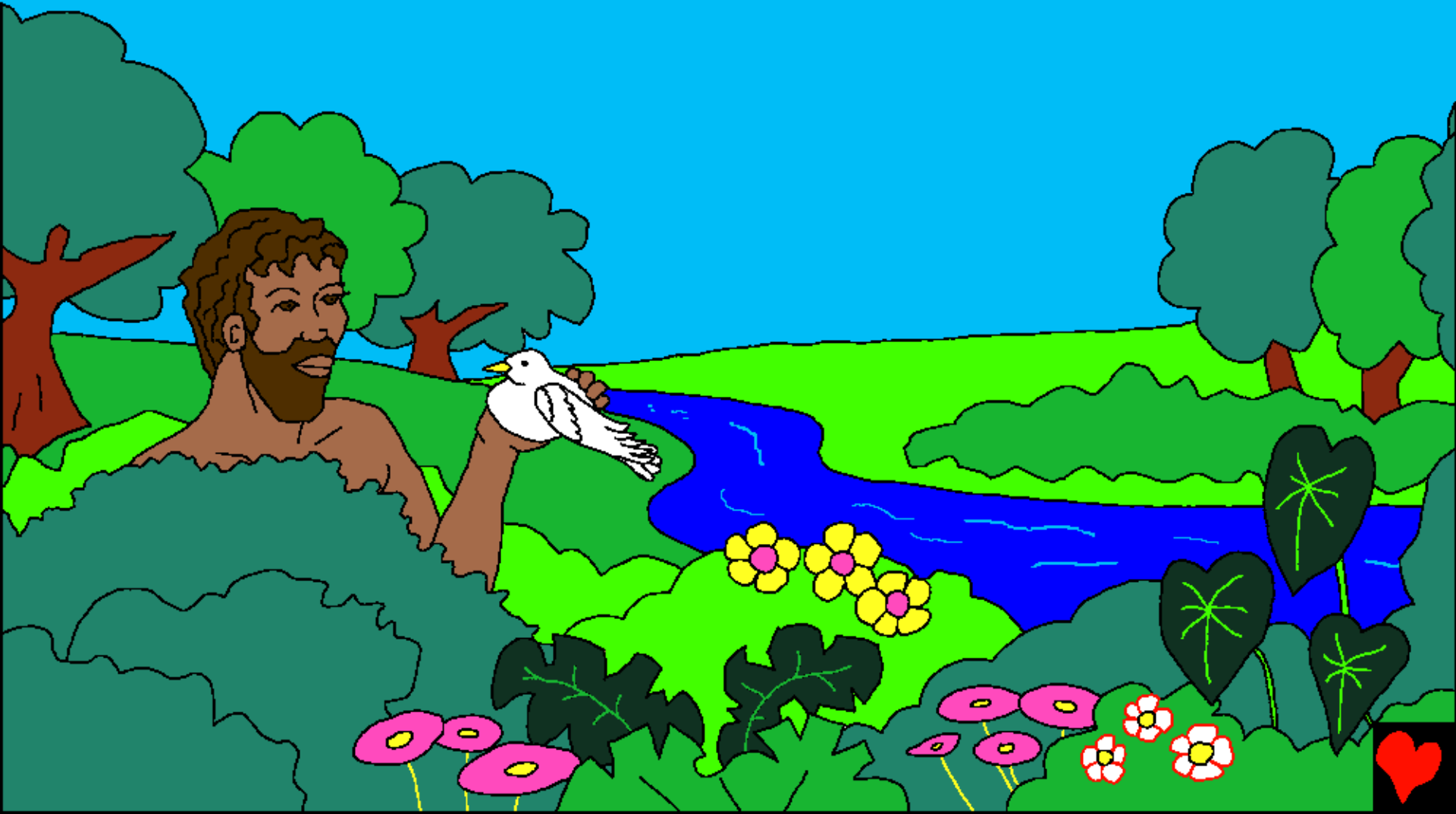
Phalna: Nangma'n hiche thusim hi sumkawveina  
ding ahilou pou leh nalah doh theina le  
tadohtheina phal ahi.



Koiham eiho eisiem'a? Pathien thu,  
Bible, in mihiemte hung kuondoh na  
eihil un ahi.



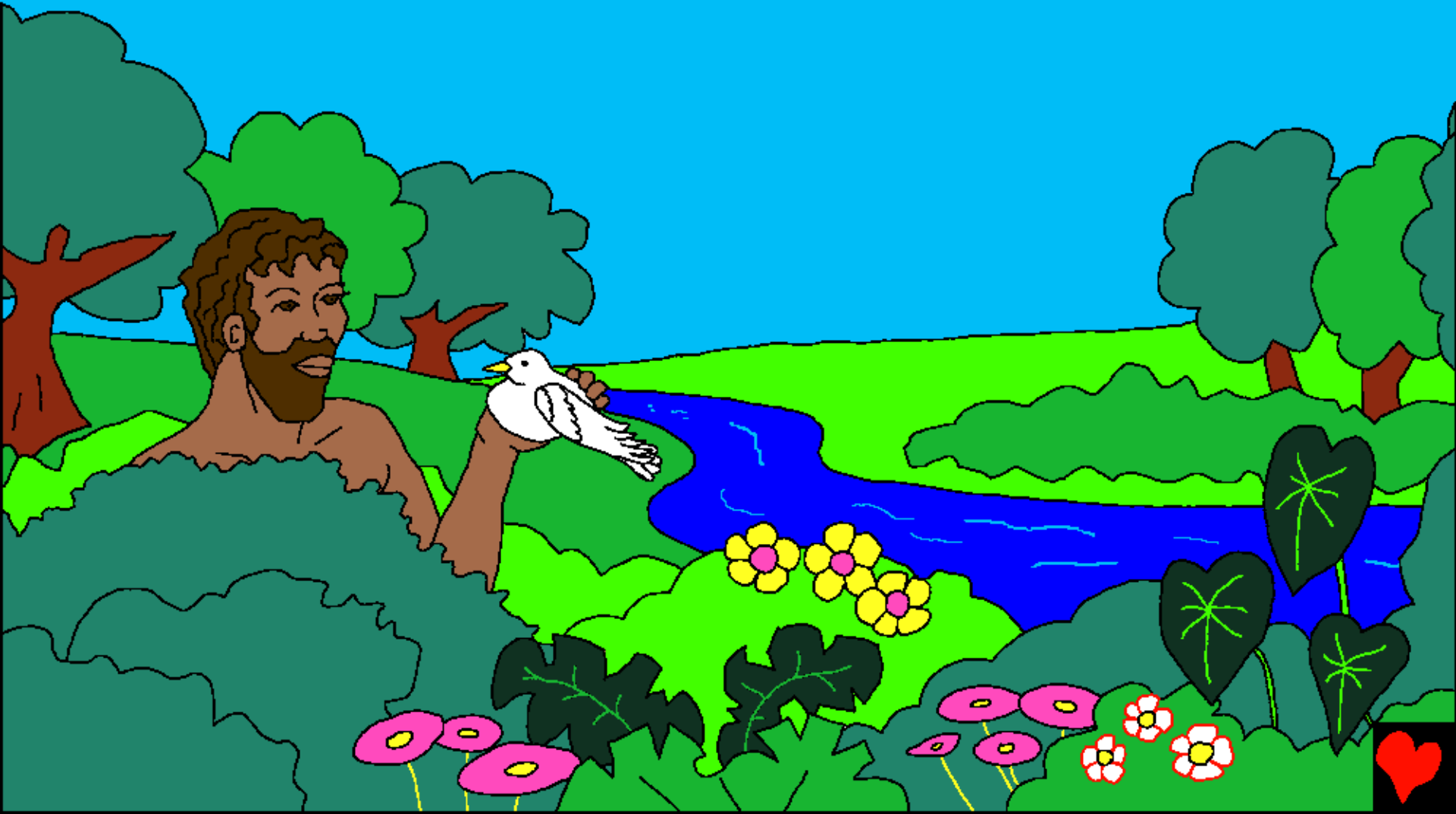
Malai in Pathien in mimasapen khat  
asiem in chule amin Adam asah e.



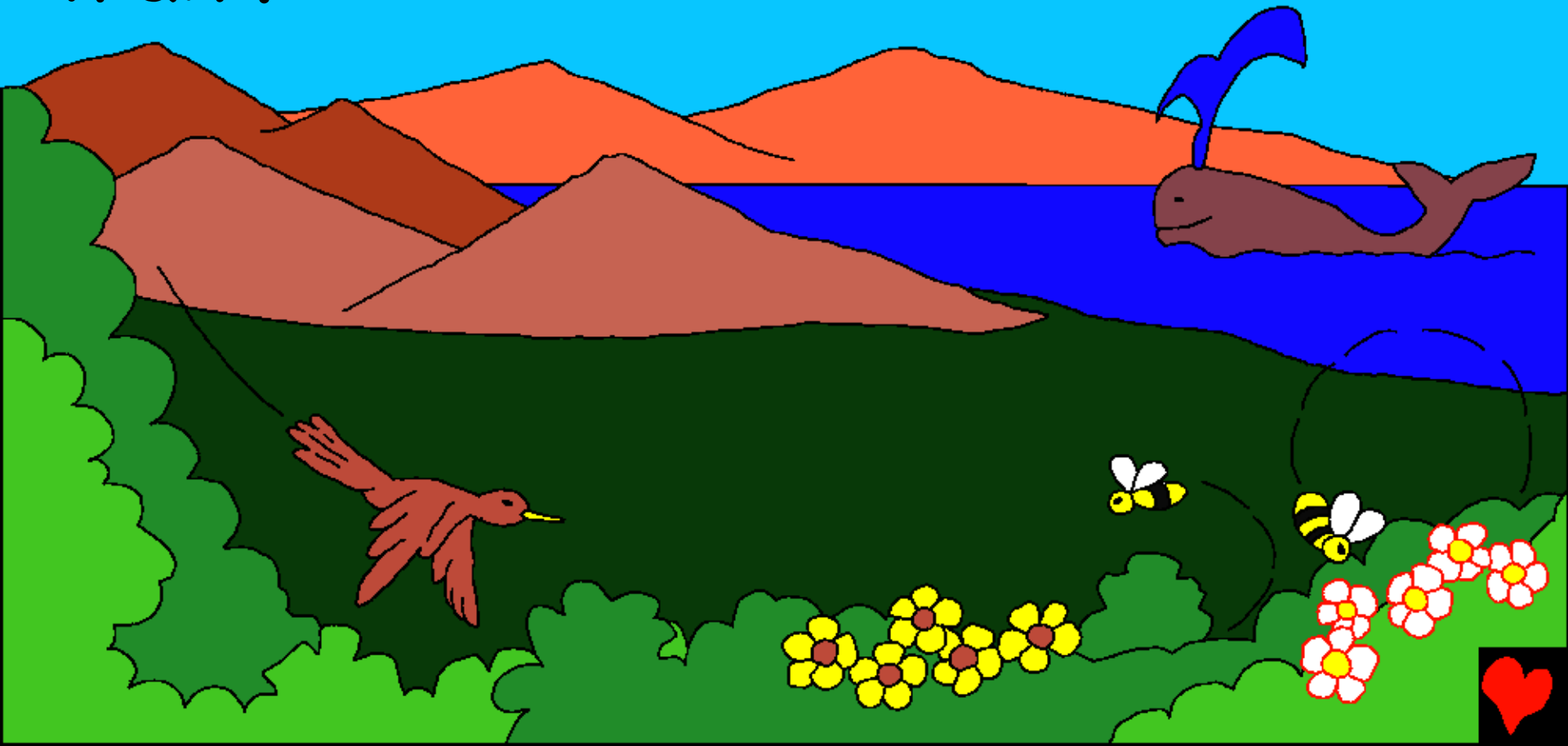
Pathien in Adam chu leisiet-leivuy-a  
kuon in asiem in ahi. Pathien in  
Adam chu hinna-hu ahaikhum in  
ahile ama mihing  
ahing ahitai.



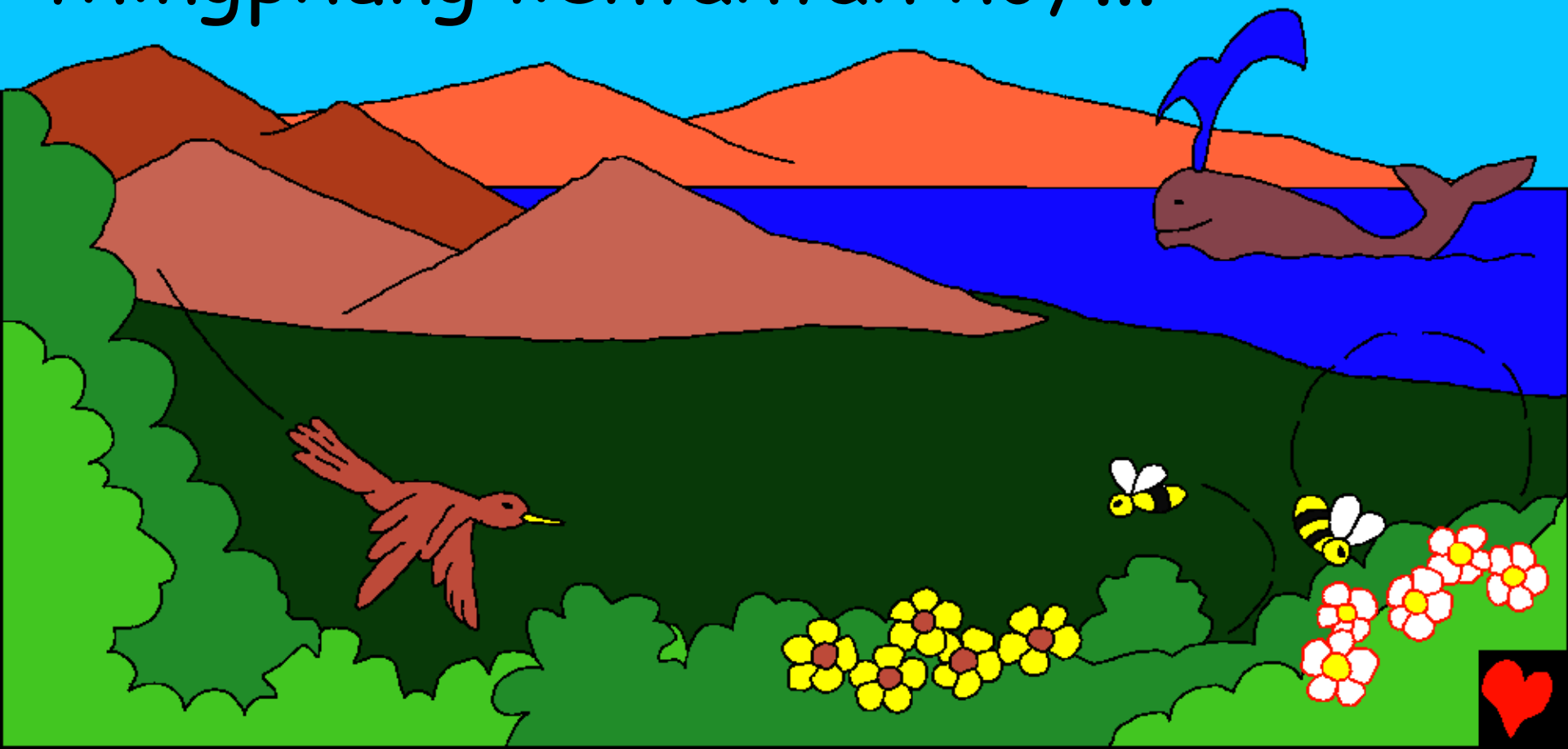
Eden kiti huon hoitah sung'ah Adam  
chu a-um in ahi.



Pathien in Adam asiem masang in  
Ama'n vetnuom umtah leisiet A-siem  
in, asung'a thil kidang tamtah A-siem  
in ahi.



Abanban cha'n Pathien in muol-le-  
lhaang ho chule phuoi-gam mun-awng  
ho, pahcha gimnamtuy ho chule  
thingphung lientahtah ho, ...





... vacha mul-hoitah tah ho chule  
khuoiho, ngapi lien tah tah kitawlle  
ho chule tuilung-naal ho A-siem in  
ahi. Thilsiem a-um zouse hi

atahbeh-a Pathien  
siem ahi.



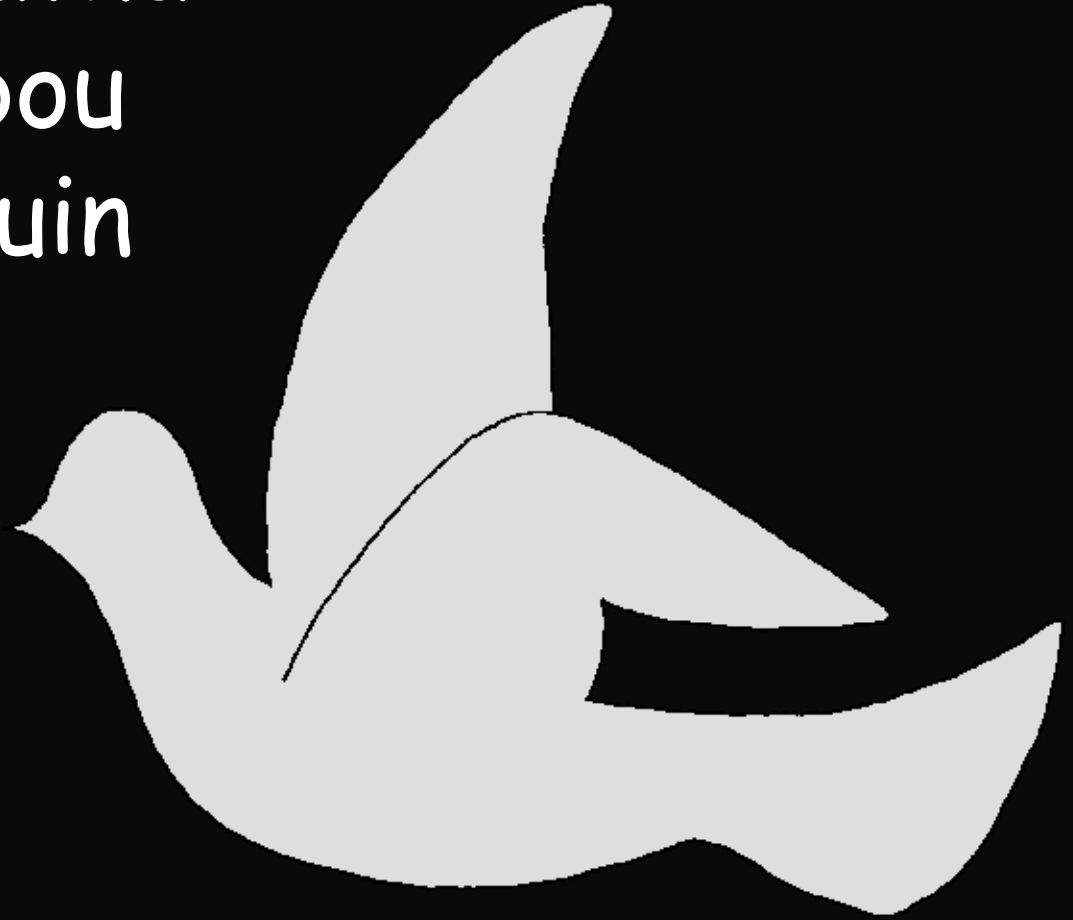
Atyl-abul in, Pathien in  
imacha Asiem masang  
chun, Pathien tai  
lou imacha a-um  
poi. Mihiemte  
hihen gam ho  
hihen thil kiti  
mawng mawng  
a-um'a a-um poi.



Imacha umlou ahi.  
Vah zong umlou,  
muhim zong umlou.  
Chunglam  
zong umlou  
anuoilam zong  
umlou. Janhi  
kiti zong umlou,  
jing kiti zong  
ana umpoi.



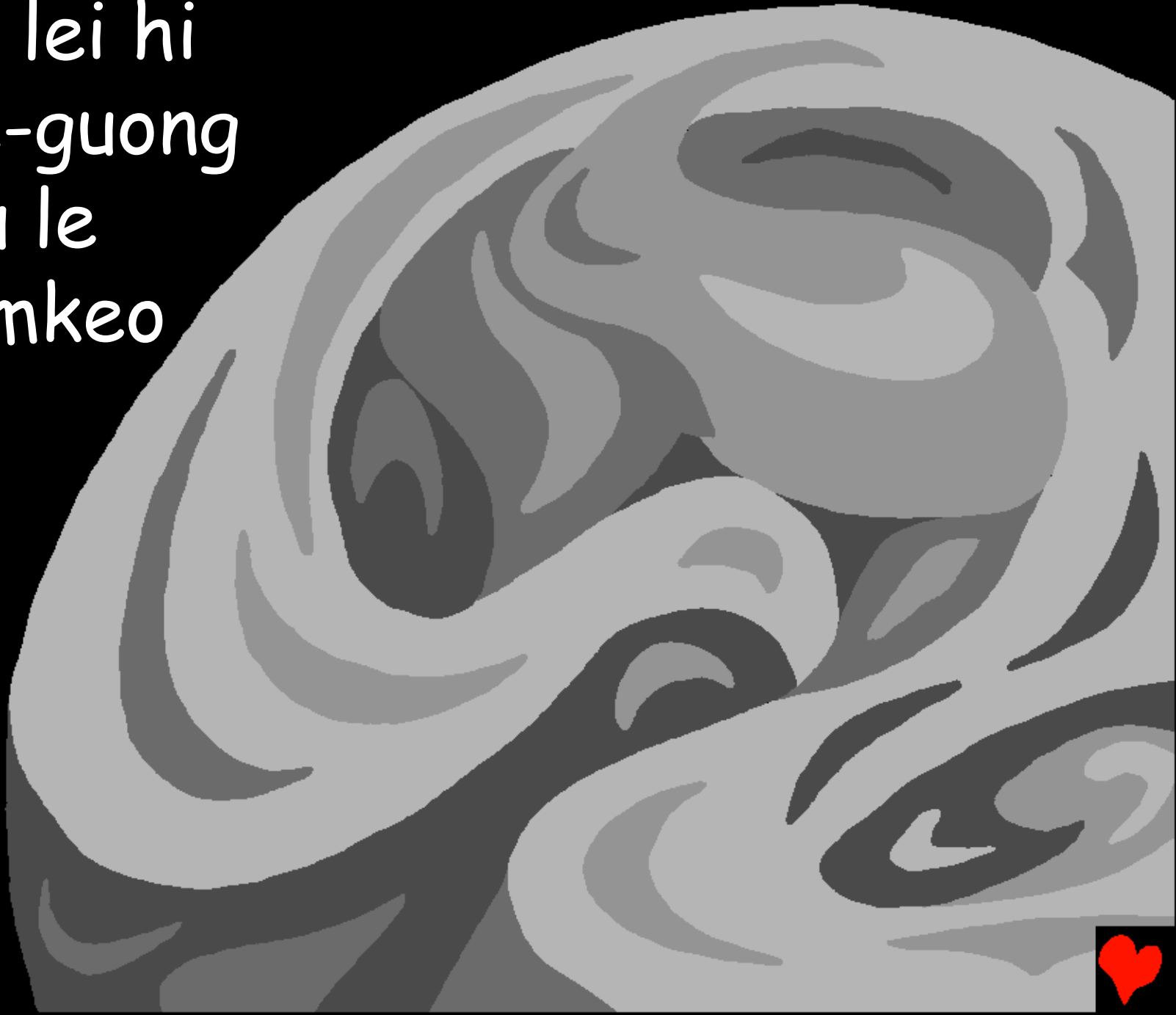
Chulai chun kipatna  
umlou Pathien bou  
a-um in ahi. Chuin  
Pathien in nna  
atongpan  
ta'n ahi!



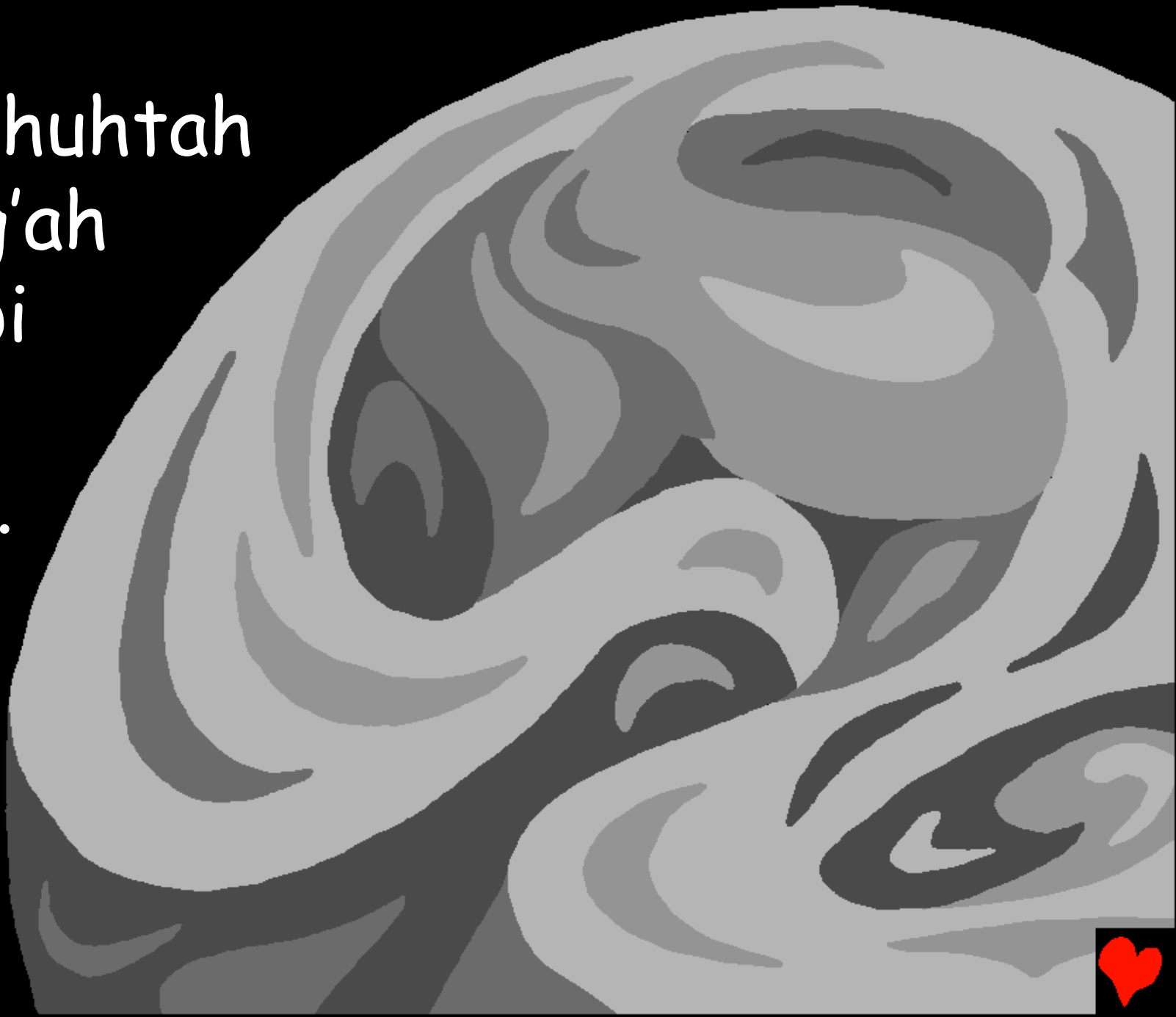
Akibul pattyl  
in, Pathien in  
Vanmunho le Leisiet  
asiem in ahi.



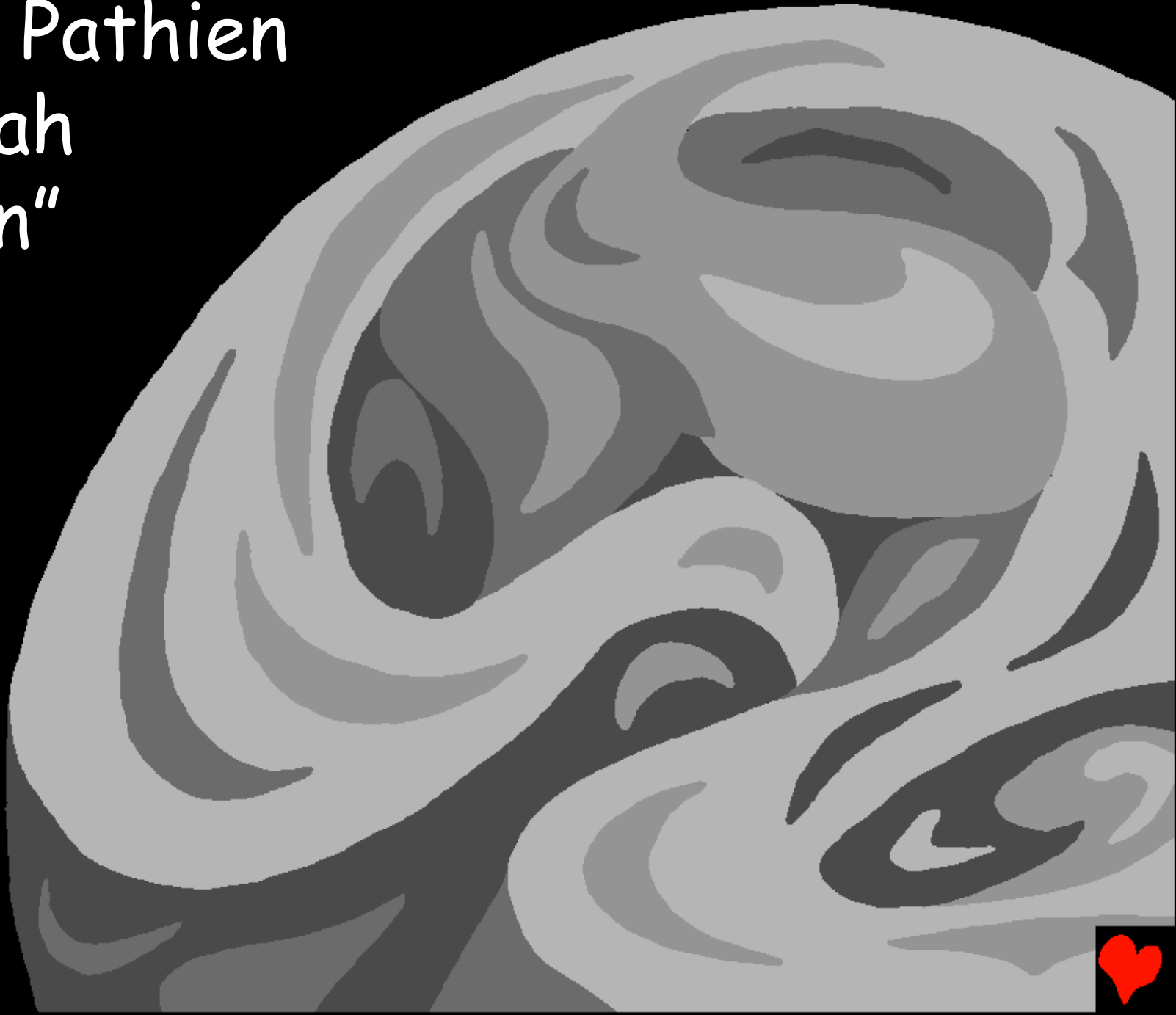
Chule lei hi  
lim-le-guong  
neilou le  
ahawmkeo  
ahi.



Chule  
tuipithuhtah  
chung'ah  
thimpi  
ajing  
in ahi.

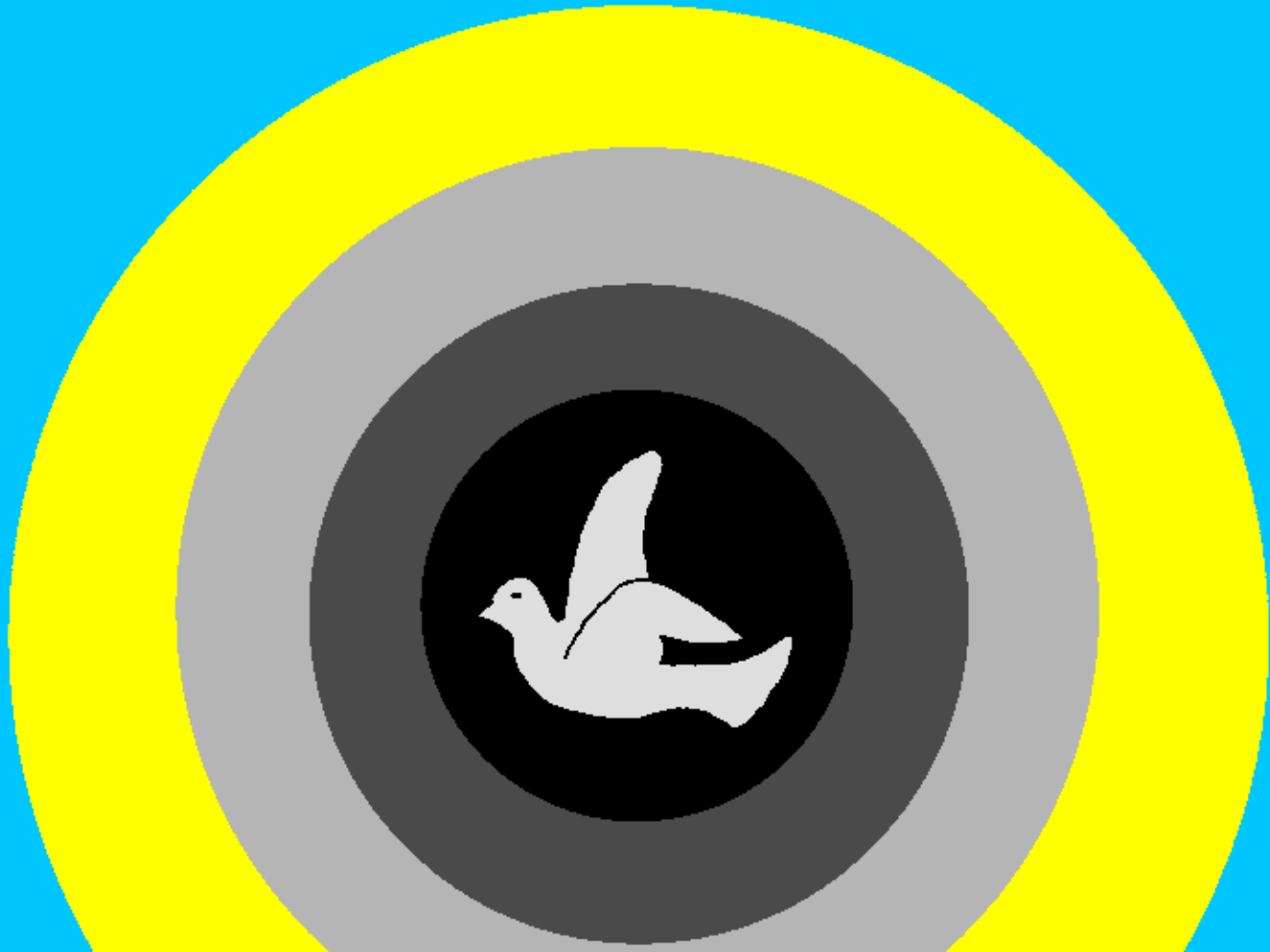


Chuin Pathien  
in, "Vah  
umhen"  
Ati.

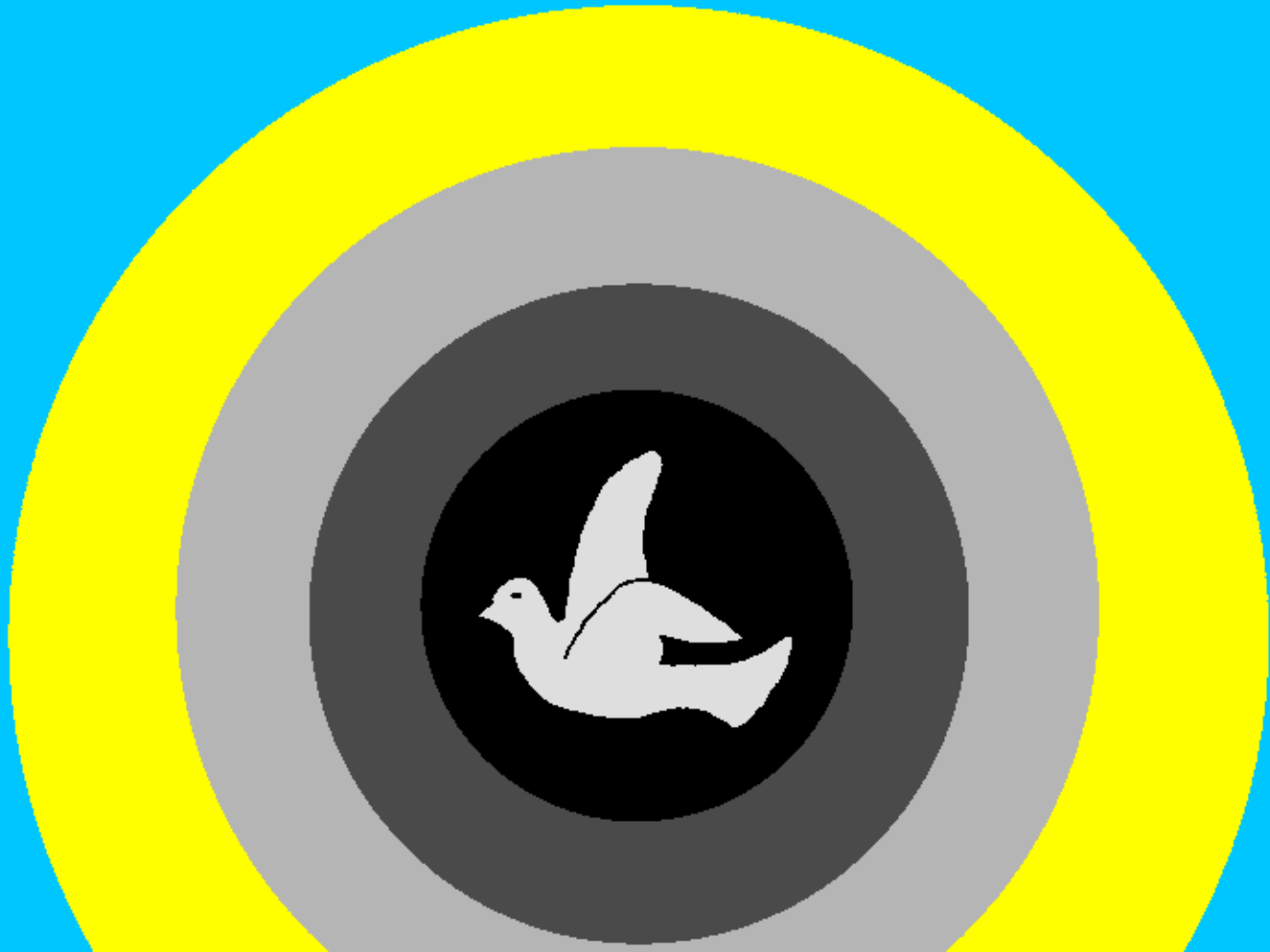




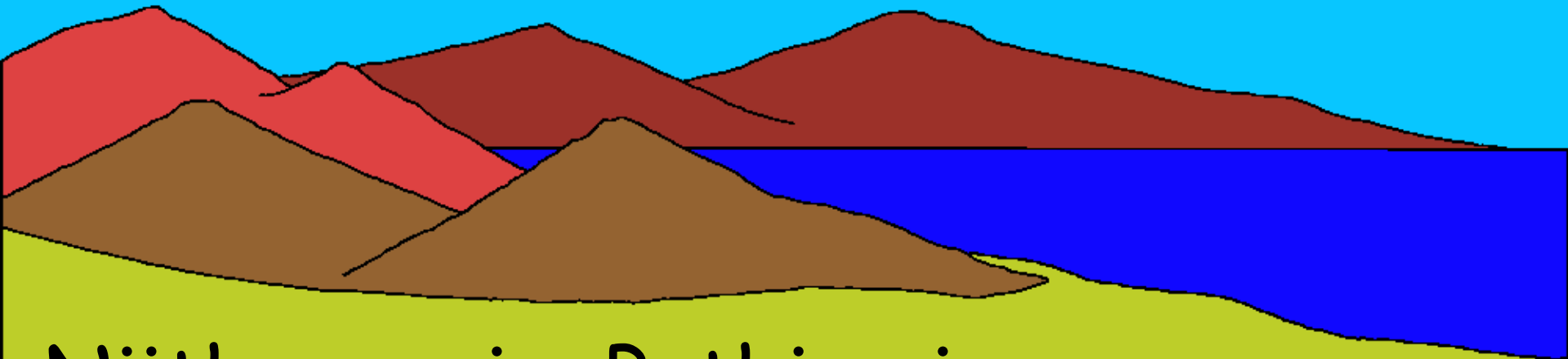
Hichun vah a-um ta'n ahi. Pathien in  
vah chu Khuovah asah in chule  
muthim chu Jan asah e.



Chuin nilhah a-um in chule jingkhuo  
avah in hichu niikhuo masapen ahi.



Niikhuo nyna in Pathien in leichung'a  
tuijaotah ho le tuikhanglien ho chule  
dyl ho A-guontuoh ta'n ahi.



Niithumna in, Pathien in  
"Mun-go mun umhen" Ati.  
Chuin mun-go a-umtai.



Pathien in, hamhing ho le pahcha ho  
chule hamphung ho chule  
thingphung ho  
kehdoh hen  
Ati.



Hichun hiho chu akehdoh ta'n ahi.  
Chuin nilhah a-um in chule  
jingkhuo avah in  
hichu niithumna  
ahi.



Chuin Pathien in nisa  
le lhathah chule ahsi  
tampi koima simzoulou  
asiem in ahi.



Hichun nilhah a-um in  
chule jingkhuo avah in  
hichu niilyna ahi.



Tuikhanglien-a  
nga-tintang ho  
chule chungleng  
vacha hicheng  
hi Pathien in  
Asiembe ding  
ho chu ahiuve.





Nii-ngana in  
Nga-thing-ad  
nei lien hole  
nga-hah ho,  
chule vacha  
keengsao  
ostrich ho  
le vasilih  
humming bird  
ho asiem in ahi.



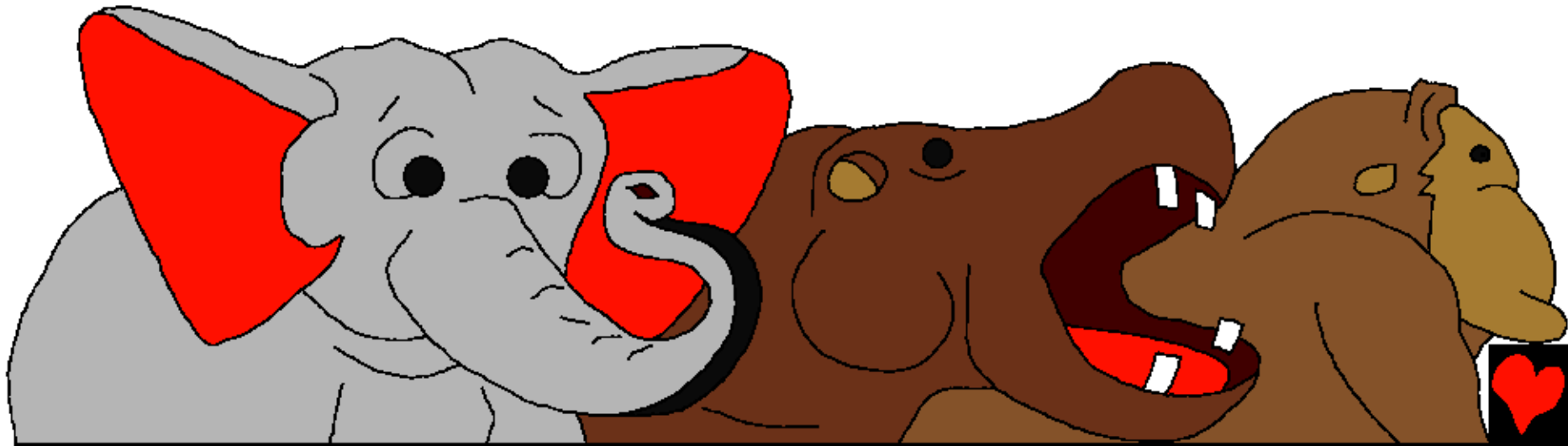
Pathien in tui lah-a  
cheengdim ding  
ngatintang, chule  
tuolgo lah-a le  
tuikhanglien sung  
chule vaan'a zalen  
ding chungleng  
vacha chikim  
A-siem in ahi.



Hichun  
nilhah a-um  
in jingkhuo  
avah in hichu  
nii-ngana ahi.



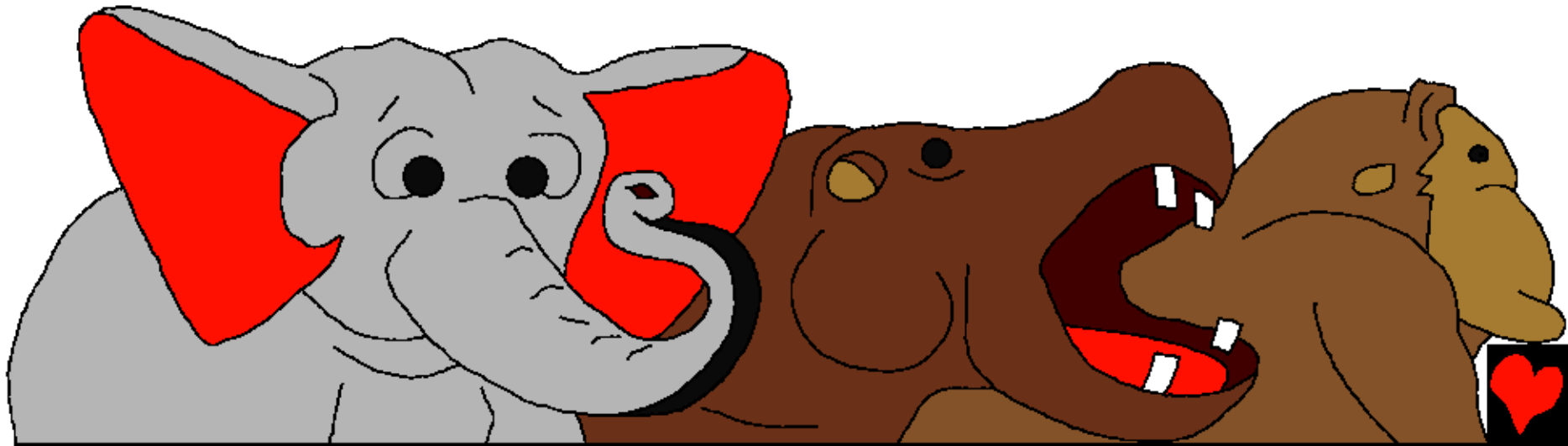
Hichengse akichai phad in Pathien in,  
"Leisiet in ganhing chikim seepdoh  
hen" Ati. Hichun sa tintang le  
ganhing chule tuol'a kithol ganhing  
tintang a-pieng ta'n ahi.



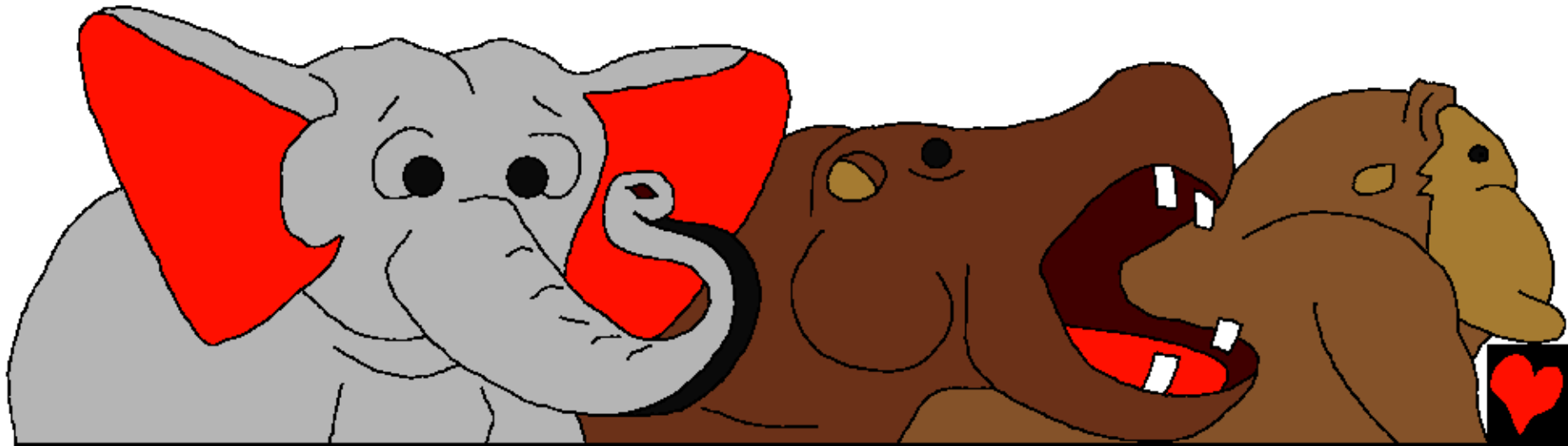
Hiho lah-a chun tuol kiliing hiel'a  
lamjot ding saipi ho chule sa-tuilud  
kisalet ho a-um in ahi. Jong-khanse  
hole o-le chatmo ho. Lung-tawl ho,  
chule julei-biengboh ho.



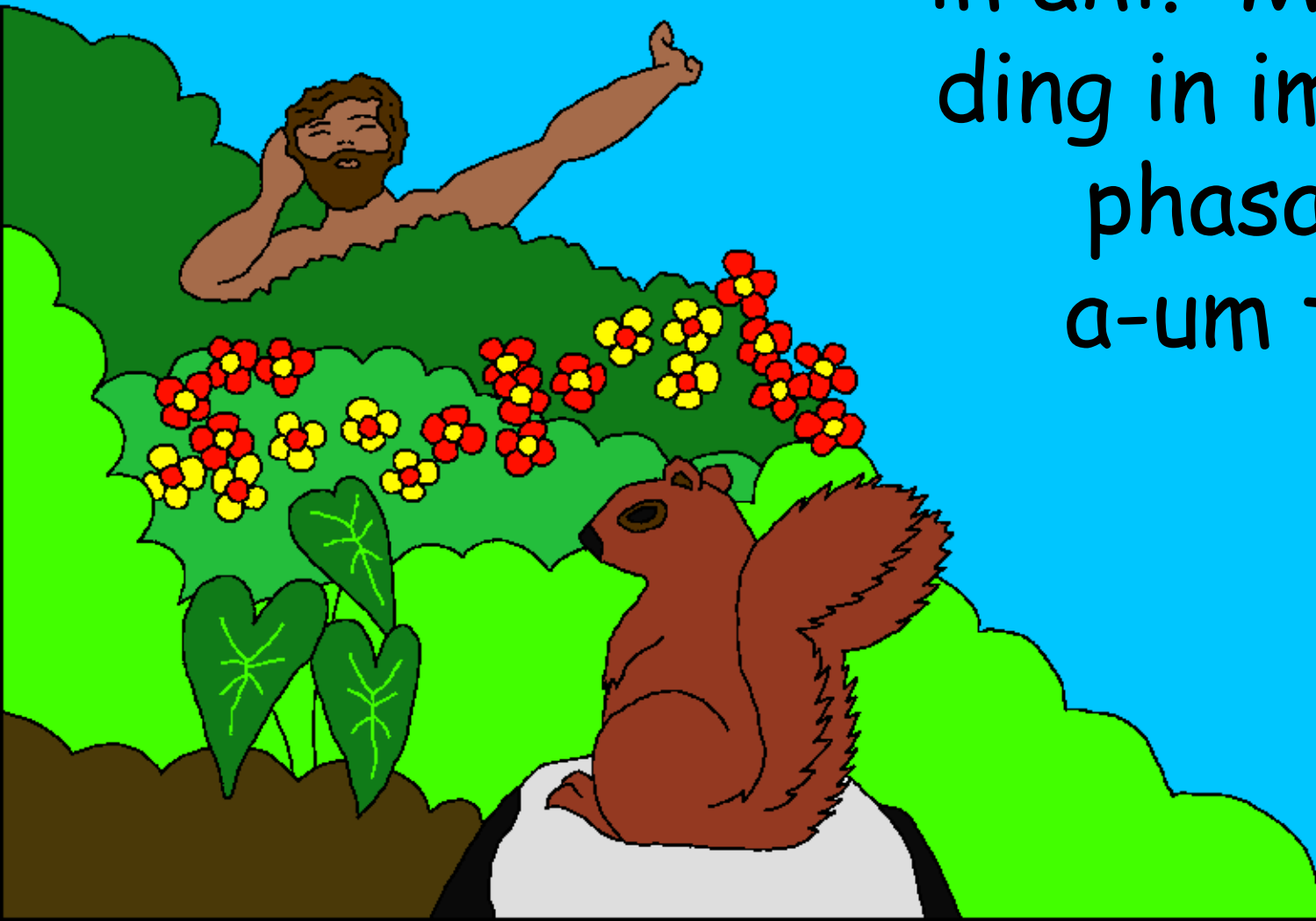
Sa-ngawng-sao saang ho. Chule  
mengcha-opchieh ho. sa-tintang  
zouse hi Pathien in hiche  
niikhuonia hi A-siem ahi.



Hichun nilhah a-um in jingkhuo avah  
in hichu niigubna ahi.

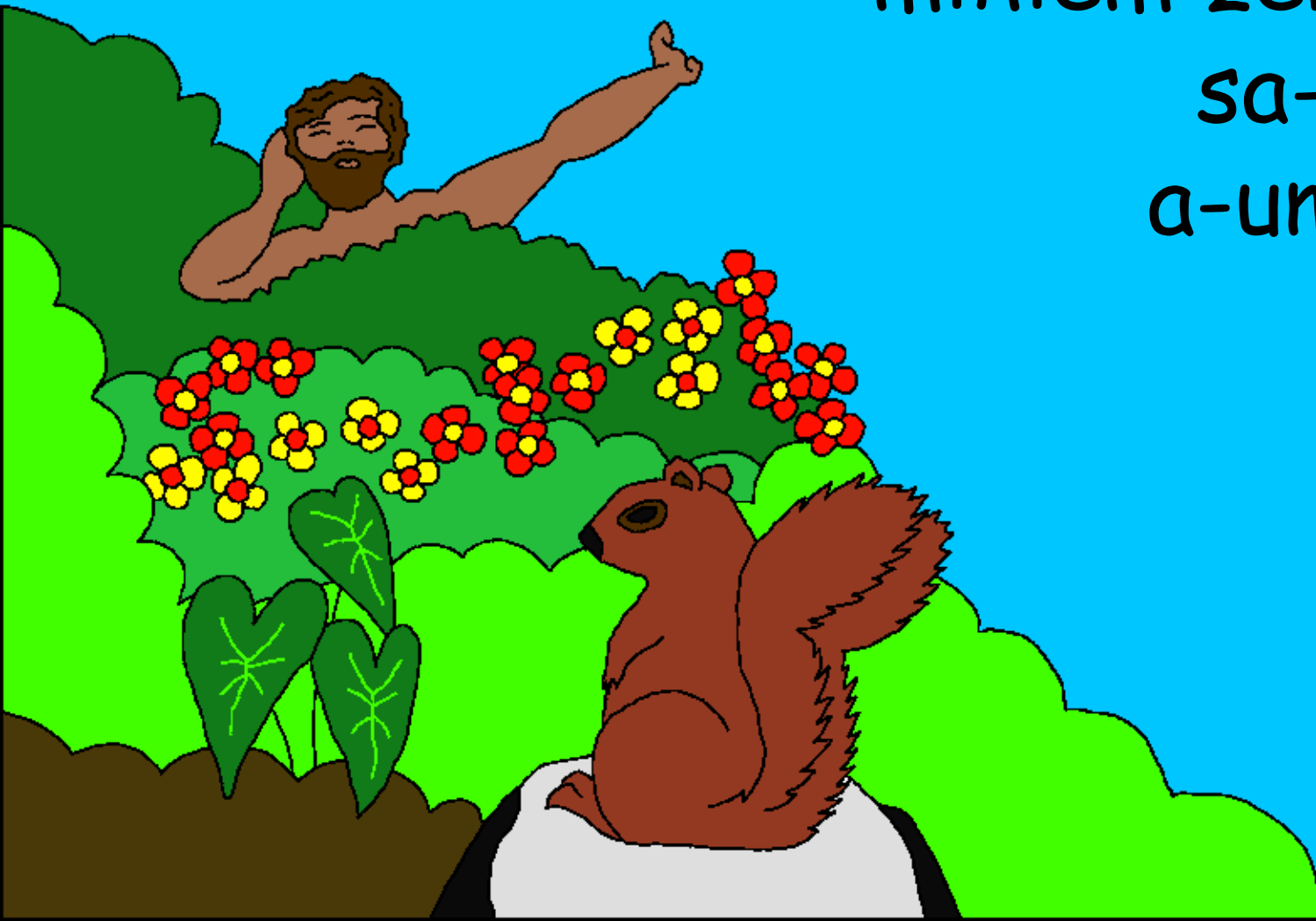


Hiche niigubna-a hin Pathien in  
achuombekh in thil khat zong abawl  
in ahi. Mihiem-a  
ding in imazouse  
phasadiem in  
a-um ta'n ahi.

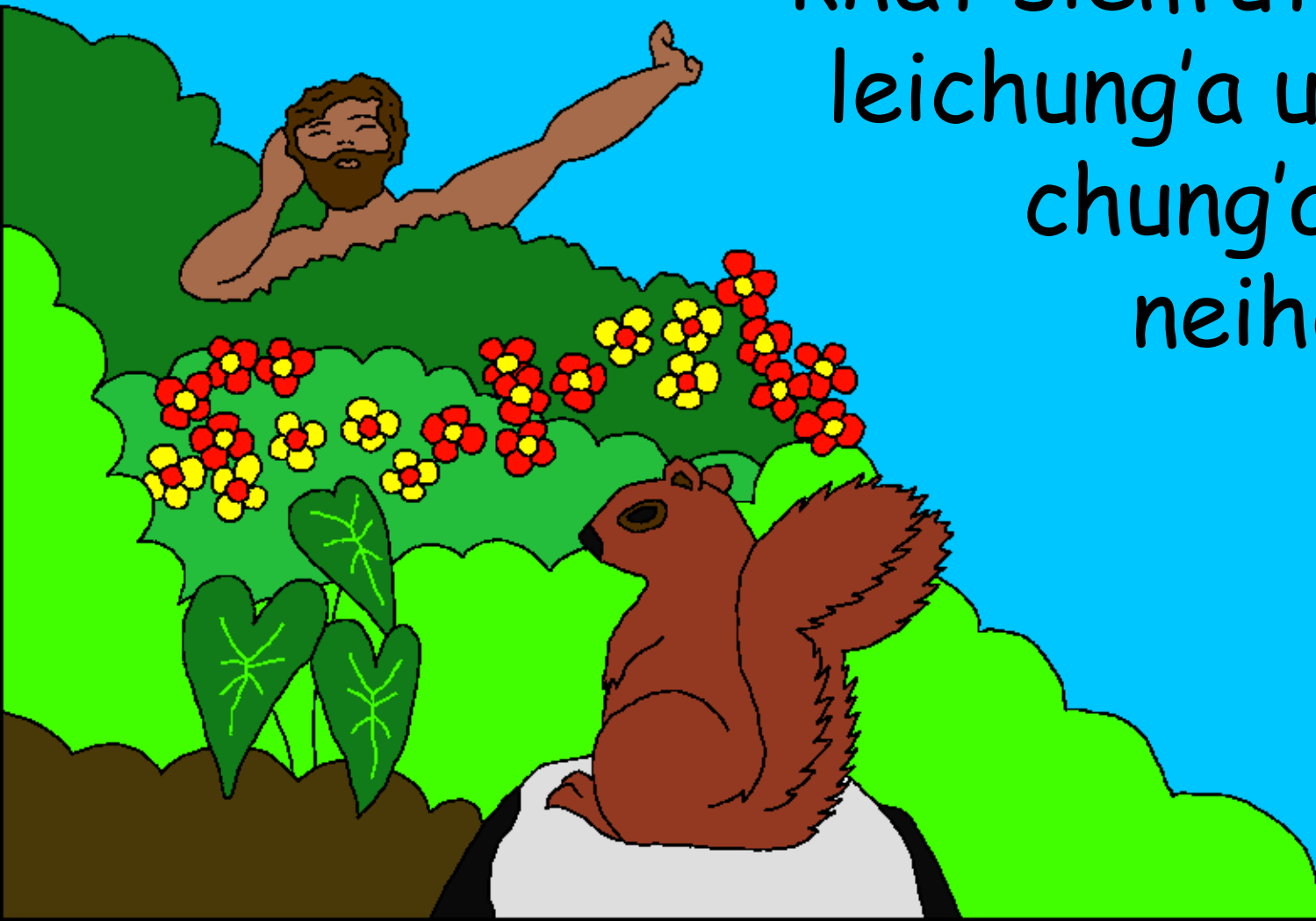




Chua chun mihiem kintuoh ding  
lougam'ah neh-le-chah chule  
mihiem zenle ding  
sa-tintang  
a-um in ahi.



Chule Pathien in, "Eiho'n  
eiho lim-le-mel in mihiem  
khat siem'ute. Ama  
leichung'a umzouse  
chung'a thunei  
neihen" Ati.



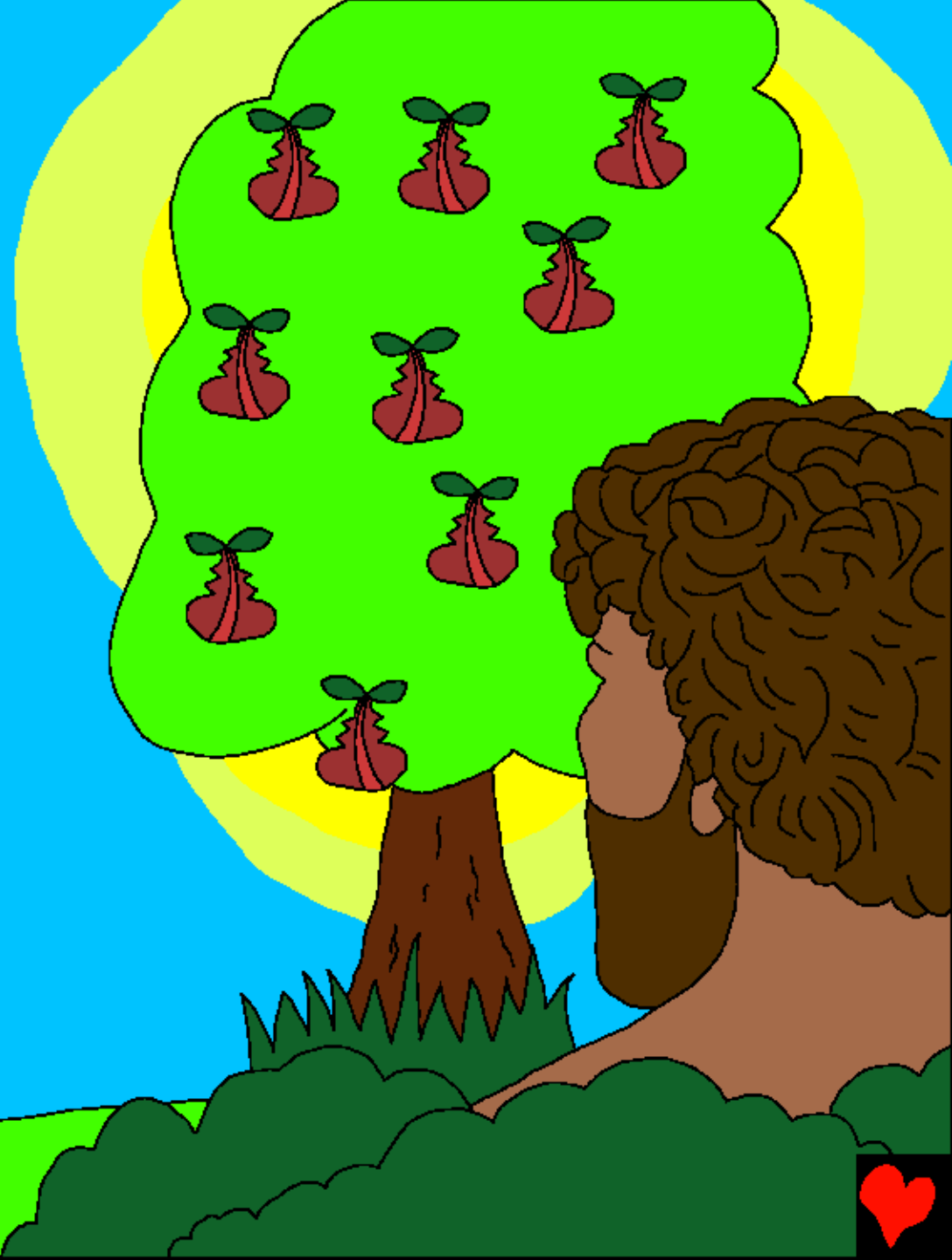
Hitichun PATHIEN IN AMA  
LIM-LE-MEL IN MIHIEM  
ASIEM E; AMA CHU  
PATHIEN IN AMA  
LIM-LE-MEL'A  
ASIEM AHI ...



Pathien in Adam  
jah-a, "Huon  
sung'a um  
naneh nuom  
chan ne in.  
Ahivang in  
sie-le-pha  
hedtheina thing'a  
vang neh in.



Theiga khu  
naneh-a ahile  
thawnlou-a  
nathy ding  
ahi" Ati.



Chule Pathien Yahweh  
(LORD) in, "Mihiem  
achang'a a-um aphapoi.  
Keima'n a-kithuopi ding  
khat siem ing'e" Ati.



Pathien in Adam  
hieng'ah chungleng  
vacha hole gamsa  
ho zouse A-hinpuy  
in ahi.



Adam in amaho  
chu aminvo suoh  
key tai. Chutia  
abawlthei chu  
michingtah  
hiding ahi.





Ahinla Adam in  
akithuopi ding  
chungleng vacha ho  
lah chule gamsa ho  
lah-a amu tapoi.



Pathin in Adam chu a-ihmumilsah  
in A-ihmumilpa nahgu khat aladoh in

chule hiche  
nahgu-a kuon  
chun Numei  
khat asiem  
in ahi.



Pathen in hiche  
numei asiem chu  
Adam ding'a  
kithuopi ding  
kituohtah ahi.



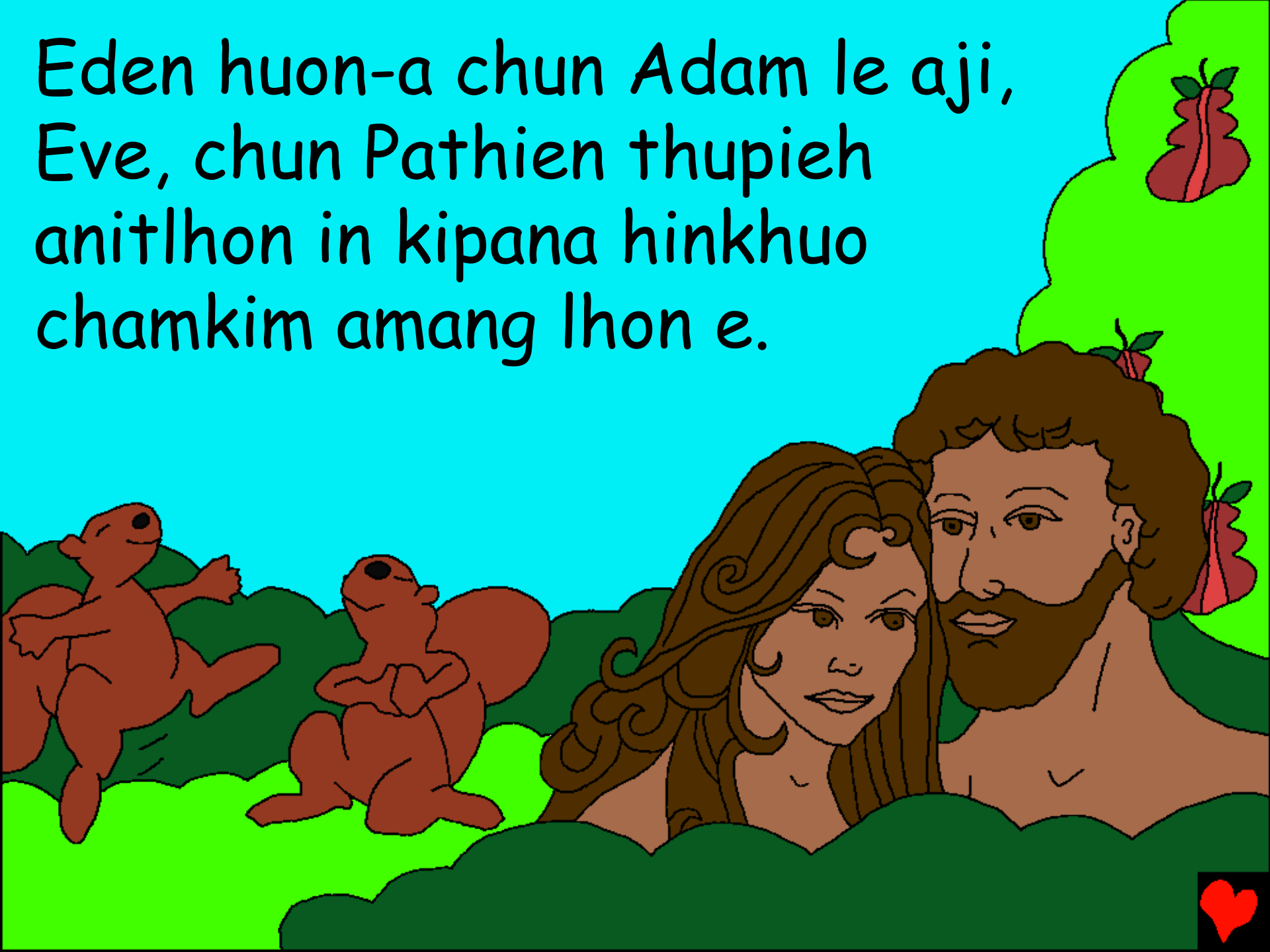
Pathien in niigub  
sung in imamzouse  
asiemchaisuoh  
in ahi.



Chuin Niisagy nii  
chu pathien in phatthei  
abuoh in chule hiche  
nii hi chawIngah-nii  
in asiemtai.



Eden huon-a chun Adam le aji,  
Eve, chun Pathien thupieh  
anithon in kipana hinkhuo  
chamkim amang lhon e.



Amany ngaichad pie-a  
le a-guol-neisun-u chu  
Yahweh (PAKAY) ahi.



Pathien in imazouse asiemlai in  
Pathien thu Bible-a, kuon thusim,  
akimu na hi  
Siemtylbu bung 1 le bung 2

"Nathu-a sunglhah hin vah a pie."  
Psalms/Labu 119:130





Akichai tai



Hiche Bible thusim hin  
eisiempa-u Pathien akidanje leh nang  
in ama naheddoh ding deina thu ahil in ahi.

Pathien in chawnsiet ati, thilphalo eiho'n ibawl'u hi  
Ama'n ahe-e. Chawnsiet man talien chu thyna ahi,  
hizongle Pathien in nangma na-ngailut behseh jeh  
in Achapa neisun, Jesu, chu nangma chawnsiet  
jeh-a thigpel'a thy ding le talien manding'a  
A'hinsawl ahi. Chuin Jesu chu thyna-a kuon in  
ahingdoh in chule Vaan-gam inn juon in achie tai.  
Nangma'n Jesu natahsan'a chule Ama hieng'a  
nachawnietna ho ngaidam na-thuum'a ahile Ama'n  
na-ngaidam ding ahi! Ama hung'in tin nalung sung'a  
cheengpai ding chule nangma tuonsod-gei-a  
Amato nahin ding ahitai.



Nangma'n hiche hi thu-tahbeh ahi ti natahsanle,  
Pathien hieng'a hiti hin tao in: Ka-ngai Jesu,  
nangma Pathien nahi ti katahsan'e, chule keima  
chawnsiet jeh-a thy ding in miheim in  
nahungpieng in, chule tu hin nangma na-hing kid  
tai. Lungsiet tah in kalung sung'a hung cheeng in  
chule kachawnsietna ho ei-ngaidam in, chutile  
keima'n tua hi hinkhuothah kanei ding, chule  
nikhat tiengle nangmato tuonsod-a ka-um ding  
ahi. Nangma thu-a nung ding le nacha khat bang'a  
hing ding in eikithuopi in. Amen.

Bible ni-siehle sim in lang chule ni-sieh  
in Pathien to kihou zing in. John 3:16

