



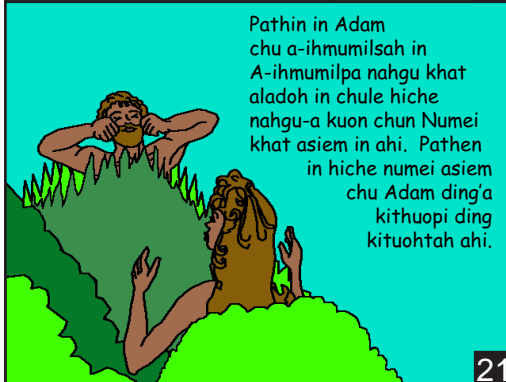
Chule Pathien Yahweh (LORD) in, "Mihiem achang'a a-um aphapoi. Keima'n a-kithuopi ding khat siem inge" Ati. Pathien in Adam hieng'ah chungleng vacha hole gamsa ho zouse A-hinpu y in ahi.

19



Adam in amaho chu aminvo suoh key tai. Chutia abawlthei chu michingtah hiding ahi. Ahinla Adam in akithuopi ding chungleng vacha ho lah chule gamsa ho lah-a amu tapoi.

20



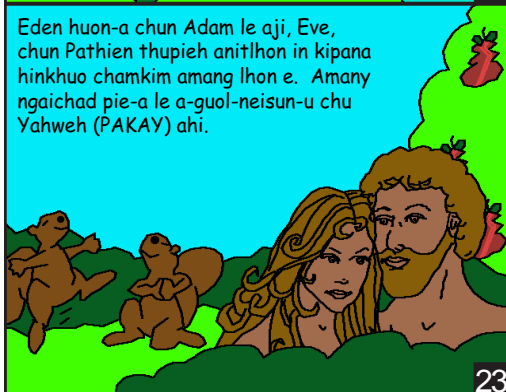
Pathin in Adam chu a-ihmumilsah in A-ihmumilpa nahgu khat aladoh in chule hiche nahgu-a kuon chun Numei khat asiem in ahi. Pathen in hiche numei asiem chu Adam ding'a kithuopi ding kituohtah ahi.

21



Pathien in niigub sung in imamzouse asiemchaisuoh in ahi. Chuin Niisagy nii chu pathien in phatthei abuoh in chule hiche nii hi chawngah-nii in asiemtai.

22



Eden huon-a chun Adam le aji, Eve, chun Pathien thupieh anitlhon in kipana hinkhuo chamkim amang lhon e. Amany ngaichad pie-a le a-guol-neisun-u chu Yahweh (PAKAY) ahi.

23

Pathien in imazouse asiemlai in Pathien thu Bible-a, kuon thusim, akimu na hi Siemytlu bung 1 le bung 2

"Nathu-a sunglah hin vah a pie." Psalms/Labu 119:130

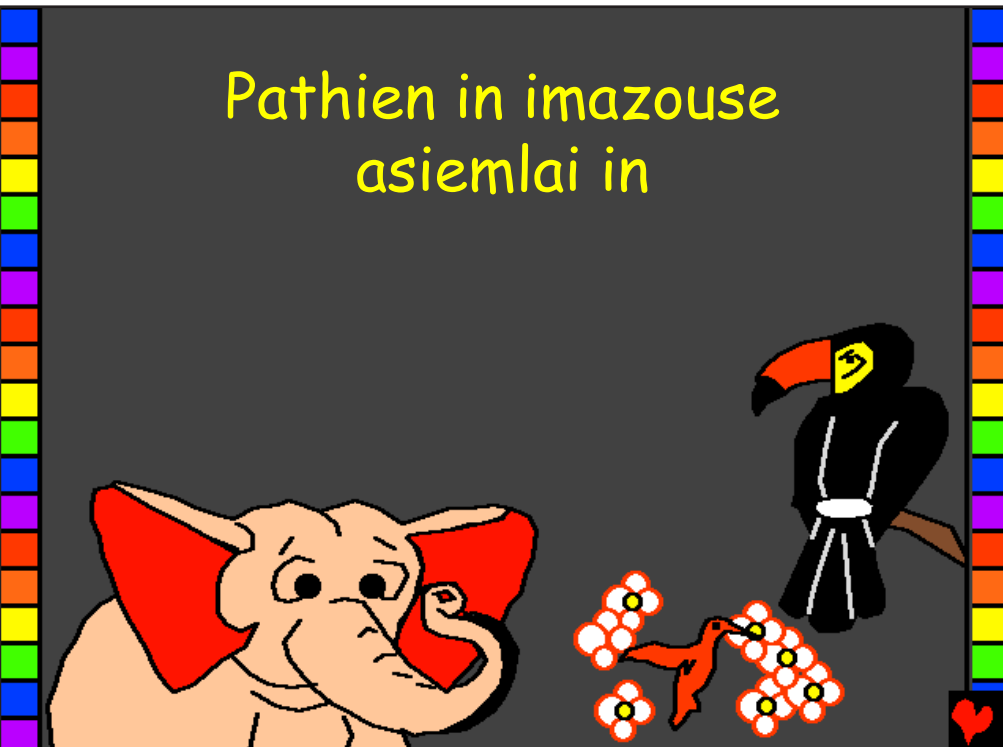
Pathien in chawnsiet ati thilphalou ho ibaw'u hi Ama'n ahe-e. Chawnsiet man chu thyna ahi.

Pathien in eiho eingailu behseh un A-Chapa, Jesu chu, eiho talien man ding le thingpe'a thy ding in Ahinsawl tai. Jesu athingdoh in chule Vaan'a akile tai! Tu'a hi Pathien in i-chawnsietna'u hi A-ngaidam thei tai.

Nangma nachawnsietna ho-a kuon'a nakinunghei nuomle, Pathien hieng'a hiti hin sei in: Ka-ngai Pathien, Jesu keima ding'a thy chule Ama tu-a a-hindoh kid katahsan'e. Lungsiet tah in kalung sung'a hung cheeng in lang kachawnsietna ho ngaidam in, chutile hinkhothah kanei ding chule tuonsod-a Nangkawm'a ka-um ding ahi. Nacha khat bang'a hing ding in eikithuopi in. Amen. John 3:16

Ni-siehle Bible sim in chule ni-sieh in Pathiento kihoulum in!

Thadou-kuki



# Pathien in imazouse asiemlai in

Asundoh-a pang Edward Hughes Muthe'i'a hilchetna bawl-apang Byron Unger; Lazarus

Athu-ledoh-a pang Dr. Seikhulun Singnit Aguongtuoh-a pang Bob Davies; Tammy S.

Thusim 60 sunga 1na

M1914.org

Bible for Children, PO Box 3, Winnipeg MB R3C 2G1 Canada

Phalna: Nangma'n hiche thusim hi sumkawveina ding ahilou pou leh nalah doh theina le tadohtheina phal ahi.



Koiham eiho eisiem'a? Pathien thu, Bible, in mihiemte hung kuondoh na eihi un ahi. Malai in Pathien in mimasapen khat asiem in chule amin Adam asah e.

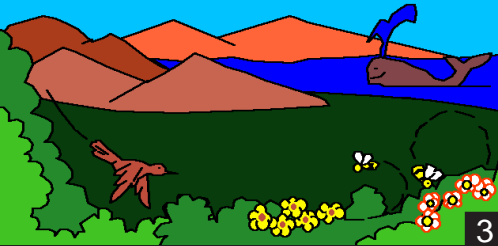


Pathien in Adam chu leisiet-leivuy-a kuon in asiem in ahi. Pathien in Adam chu hinna-hu ahaikum in ahile ama mihing ahing ahitai. Eden kiti huon hoitah sung'ah Adam chu a-um in ahi.

1

2

Pathien in Adam asiem masang in Ama'n vetnuom umtah leisiet A-siem in, asung'a thil kidang tamtah A-siem in ahi.



3

Abanban cha'n Pathien in muol-le-lhaang ho chule phuoi-gam mun-awng ho, pahcha gimnamtuy ho chule thingphung lientatah ho, vacha mul-hoitah tah ho chule khuoiho, ngapi lien tah tah kitawlle ho chule tui lung-naal ho A-siem in ahi.



Thilsiem a-um zouse hi atahbeh-a Pathien siem ahi.

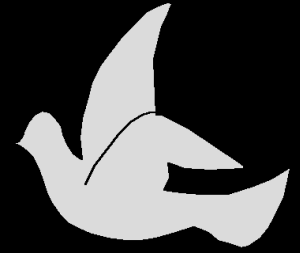
4

Atyl-abul in, Pathien in imacha Asiema masang chun, Pathien tai lou imacha a-um poi. Mihiemte hihen gam ho hihen thil kiti mawng mawng a-um'a a-um poi. Imacha umlou ahi. Vah zong umlou, muhim zong umlou. Chunglam zong umlou anuolam zong umlou. Janhi kiti zong umlou, jing kiti zong ana umpoi. Chulai chun kipatna umlou Pathien bou a-um in ahi. Chuin Pathien in nna atongpan ta'n ahi!



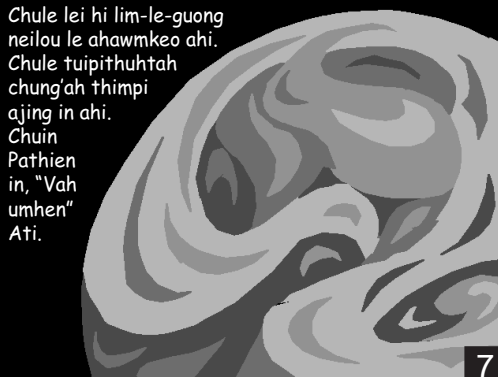
5

Akibul patty! in, Pathien in Vanmunho le Leisiet asiem in ahi.



6

Chule lei hi lim-le-guon neilou le ahawmkeo ahi. Chule tui pithuhtah chung'ah thimpi ajing in ahi. Chuin Pathien in, "Vah umhen" Ati.



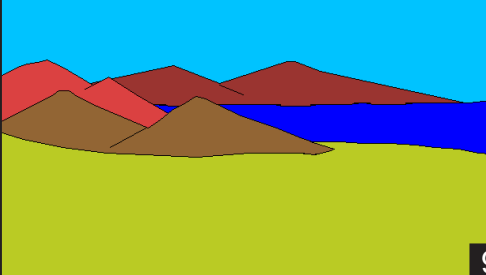
7

Hichun vah a-um ta'n ahi. Pathien in vah chu Khuovah asah in chule muthim chu Jan asah e. Chuin nilhah a-um in chule jingkhua avah in hichu niikhua masapen ahi.



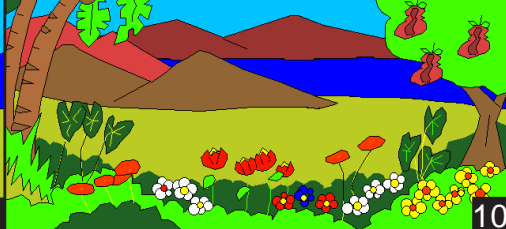
8

Niikhua nyna in Pathien in leichung'a tuijaotah ho le tuikhanglien ho chule dyl ho A-guontuoh ta'n ahi. Niithumna in, Pathien in "Mun-go mun umhen" Ati. Chuin mun-go a-umtai.



9

Pathien in, hamhing ho le pahcha ho chule hamphung ho chule thingphung ho kehдох hen Ati. Hichun hiho chu akehдох ta'n ahi. Chuin nilhah a-um in chule jingkhua avah in hichu niithumna ahi.



10

Chuin Pathien in nisa le lhathah chule ahsi tampi koima simzoulou asiem in ahi. Hichun nilhah a-um in chule jingkhua avah in hichu niilyna ahi.



11

Tuikhanglien-a nga-tintang ho chule chungleng vacha hicheng hi Pathien in Asiembe ding ho chu ahiuve. Nii-ngana in Nga-thing-ad nei lien hole nga-hah ho, chule vacha keengsao ostrich ho le vasilih humming bird ho asiem in ahi.



12

Pathien in tui lah-a cheengding ngatintang, chule tuolgo lah-a le tuikhanglien sung chule vaan'a zalen ding chungleng vacha chikim A-siem in ahi. Hichun nilhah a-um in jingkhua avah in hichu nii-ngana ahi.



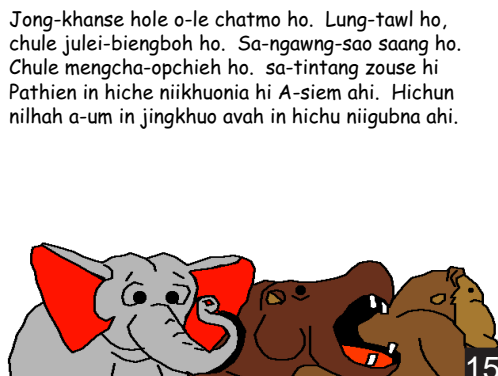
13

Hichengse akichai phad in Pathien in, "Leisiet in ganhing chikim seepдох hen" Ati. Hichun sa tintang le ganhing chule tuol'a kithol ganhing tintang a-pieng ta'n ahi. Hiho lah-a chun tuol kiliing hiel'a lamjot ding saipi ho chule sa-tuilud kisalel ho a-um in ahi.



14

Jong-khanse hole o-le chatmo ho. Lung-tawl ho, chule julei-biengboh ho. Sa-ngawng-sao saang ho. Chule mengcha-opchieh ho. sa-tintang zouse hi Pathien in hiche niikhuonia hi A-siem ahi. Hichun nilhah a-um in jingkhua avah in hichu niigubna ahi.



15

Hiche niigubna-a hin Pathien in achuomben in thil khat zong awal in ahi. Mihiem-a ding in imazouse phasadiem in a-um ta'n ahi. Chua chun mihiem kintuoh ding lougam'ah neh-le-chah chule mihiem zenle ding sa-tintang a-um in ahi.



16

Chule Pathien in, "Eiho'n eiho lim-le-mel in mihiem khat siem'ute. Ama leichung'a umzouse chung'a thunei neihen" Ati. Hitichun PATHIEN IN AMA LIM-LE-MEL IN MIHIEM ASIEM E; AMA CHU PATHIEN IN AMA LIM-LE-MEL'A ASIEM AHI ...



17

Pathien in Adam jah-a, "Huo sung'a um naneh nuom chan ne in. Ahivang in sie-le-pha hedtheina thing'a vang neh in. Theiga khu naneh-a ahile thawnlou-a nathy ding ahi" Ati.



18