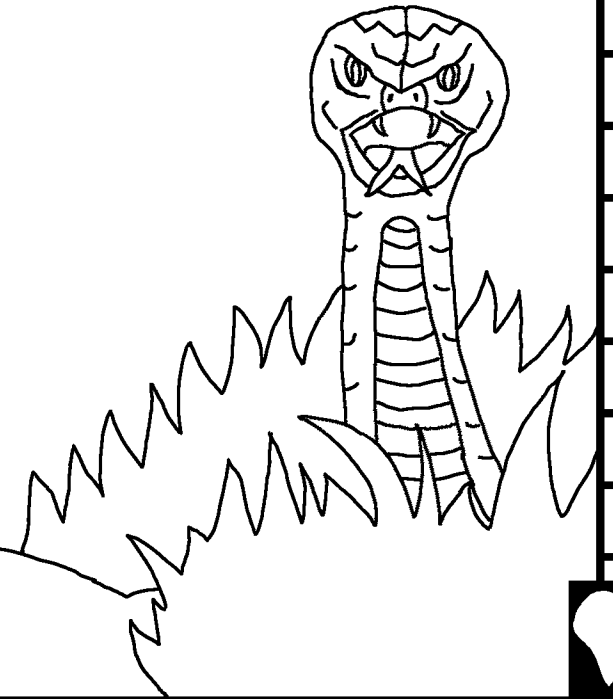


Chapang ho Bible
Tahlahna

Mihiem genthei
kipatna



Asundoh-a pang: Edward Hughes
Muthei'a hilchetna bawl-apang:
Byron Unger; Lazarus; Alastair Paterson
Aguongtuoh-a pang: M. Maillot; Tammy S.
Athu-ledoh-a pang: Dr. Seikholun Singsit
Apodoh-a: Bible for Children
www.M1914.org

BFC
PO Box 3
Winnipeg, MB R3C 2G1
Canada

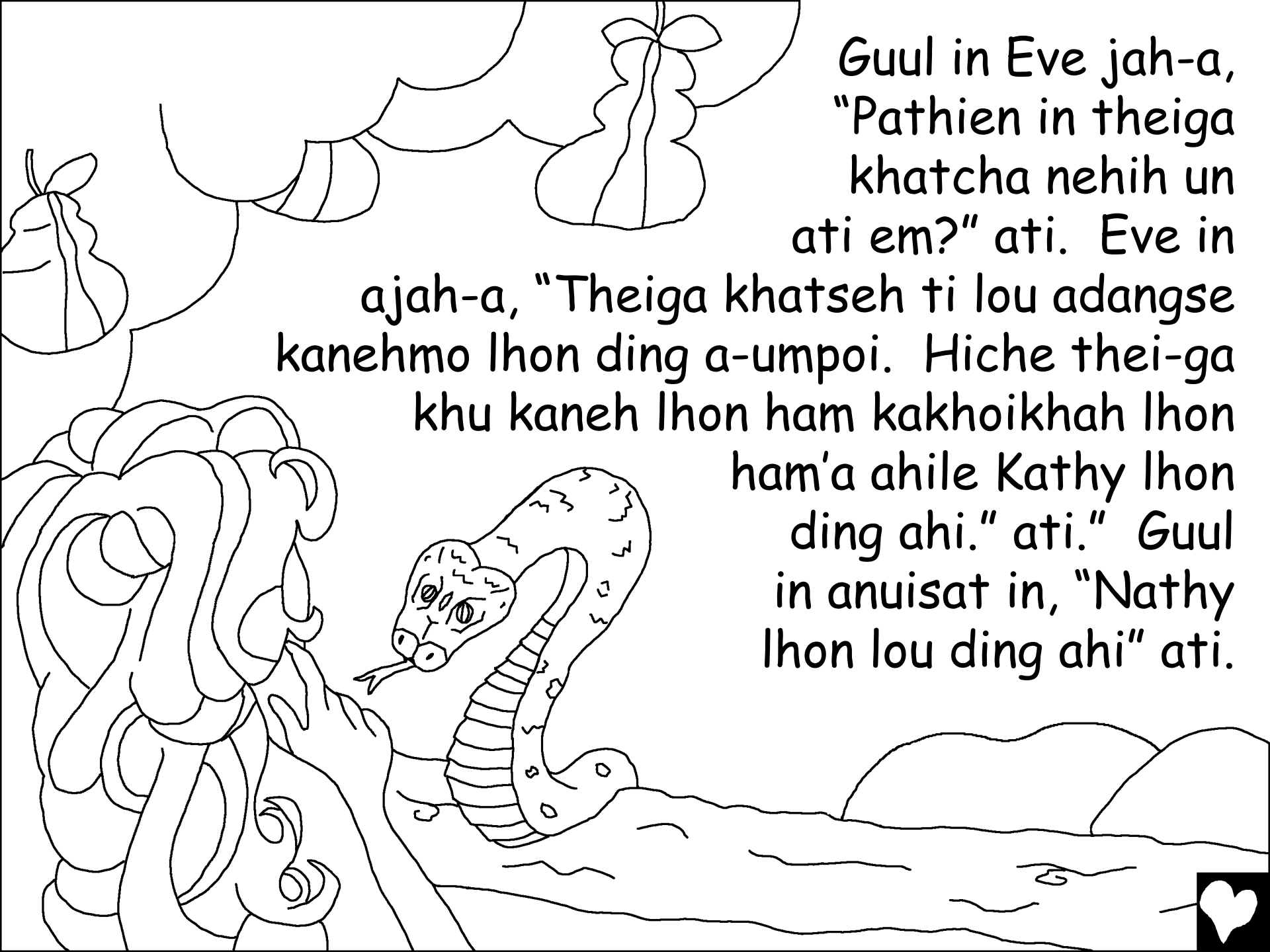
©2021 Bible for Children, Inc.

Phalna: Nangma'n hiche thusim hi sumkawveina ding ahilou pou
leh nalah doh theina le tadohtheina phal ahi.



Imazouse hi Pathien siem ahi!
Pathien in mihiem masapen Adam
A-siem chun, Adam le aji Eve chu
Eden huon'a acheeng in ahi. Pathien
thu-nuoi-a hinkhuo
nuomtah mang in chule
Pathien toh kivop in a-um
un hizongle
nikhat
chu ...





Guul in Eve jah-a,
"Pathien in theiga
khatcha nehih un
ati em?" ati. Eve in
ajah-a, "Theiga khatseh ti lou adangse
kanehmo lhon ding a-umpoi. Hiche thei-ga
khu kaneh lhon ham kakhoikhah lhon
ham'a ahile Kathy lhon
ding ahi." ati." Guul
in anuisat in, "Nathy
lhon lou ding ahi" ati.

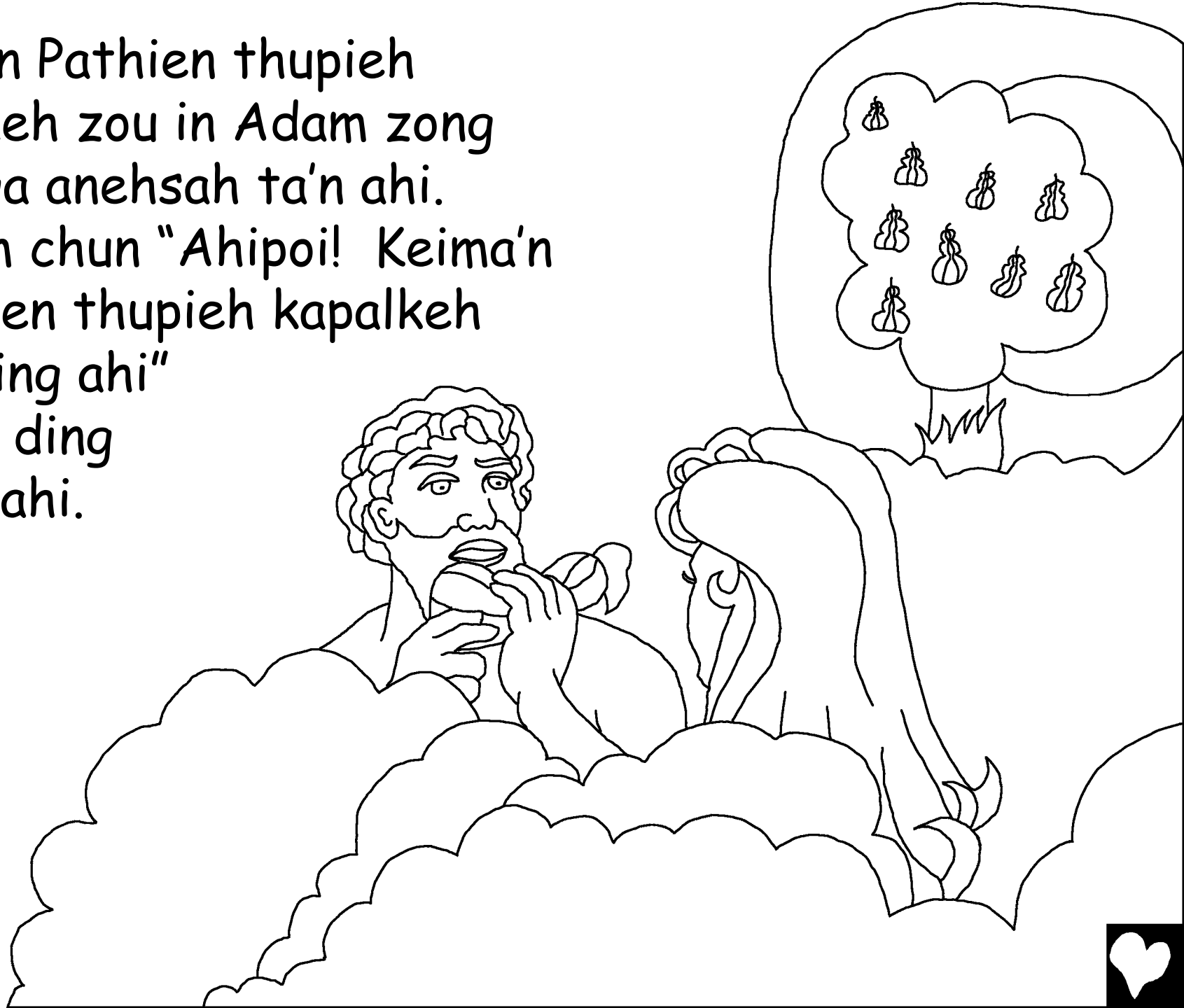




"Naneh le Pathien nabah ding ahi" ati. Eve in theiga chu neh ding alung-gul tan ahi. Ama'n guul thusei atahsan in theiga chu anetai.



Eve in Pathien thupieh
apalkeh zou in Adam zong
theiga anehsah ta'n ahi.
Adam chun "Ahipoi! Keima'n
Pathien thupieh kapalkeh
lou ding ahi"
anati ding
dawl ahi.





Adam le Eve

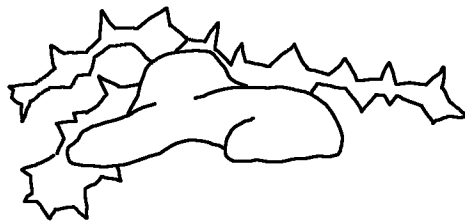
achawnsiet phad un saguohkeo ahiu
chu ahe lhon tai. Saguohkeo khukhumna ding in
theichang-naa akilmammat un, chule hambuh
lah-a Pathien'a kuon in akisel lhon tai.



Nilhangkai in huon'a chun Pathien ahung ta'n ahi.
Ama'n Adam le Eve in ipi abawl'u ahed ahi.
Adam in Eve angoh in chule Eve in guul
angoh ta'n ahi. Pathien in, "Guul hi sapsiet
changhen. Numei in nao-suonat thuoh
hen" ati. "Adam, na-chawnsiet jeh
in leisiet hi ling-le-khao a sapsiet
ahitai. Nangma'n niisieh
le ulsa kai-a neh
nakhawl ding
ahi" ati.

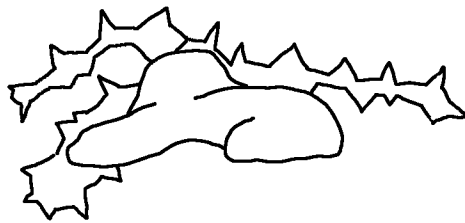


Hichun Pathien in huon sung
nuomtah-a kuon chun Adam
le Eve anodoh tai. Ajeh chu
amany chawnsie ahi lhon
ta'n, hinna pie
Pathien to
chuomkhen
ahilhon tai!





Amany daldohna ding
meikuong-chemjam khat
Pathien in A-siem'e. Adam
le Eve kivonna ding savun
abawlpieh in ahi. Hiche
savun ho chu
Pathien hoi-a
alah ahidem?



Phad alhintah in, Adam le Eve in cha anei lhon in ahi.
Amany chapa masapen, Kaina chu huonbawl mi ahi.
Amany chapa anyna, Abel chu kelnguoi ching ahi.
Nikhat hi Kaina in Pathien pieh ding huon'a anche-

louhing phabep achoy in ahi. Abel in
a-kelnguoi aphapenchieh

phabep Pathien

pieh ding

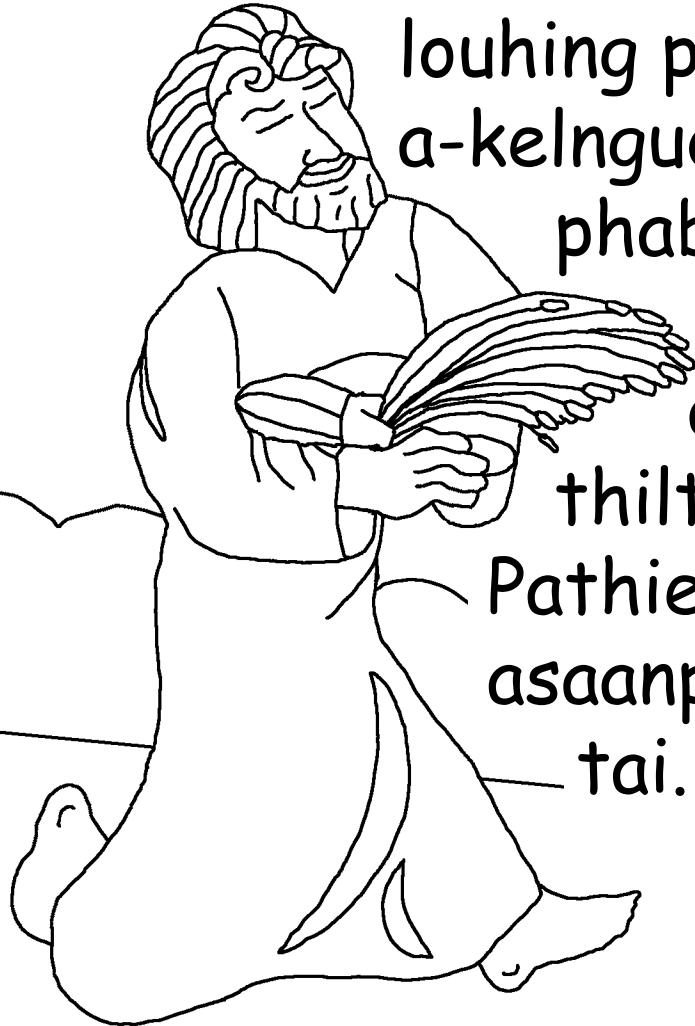
achoy e. Abel

thilto joh chu

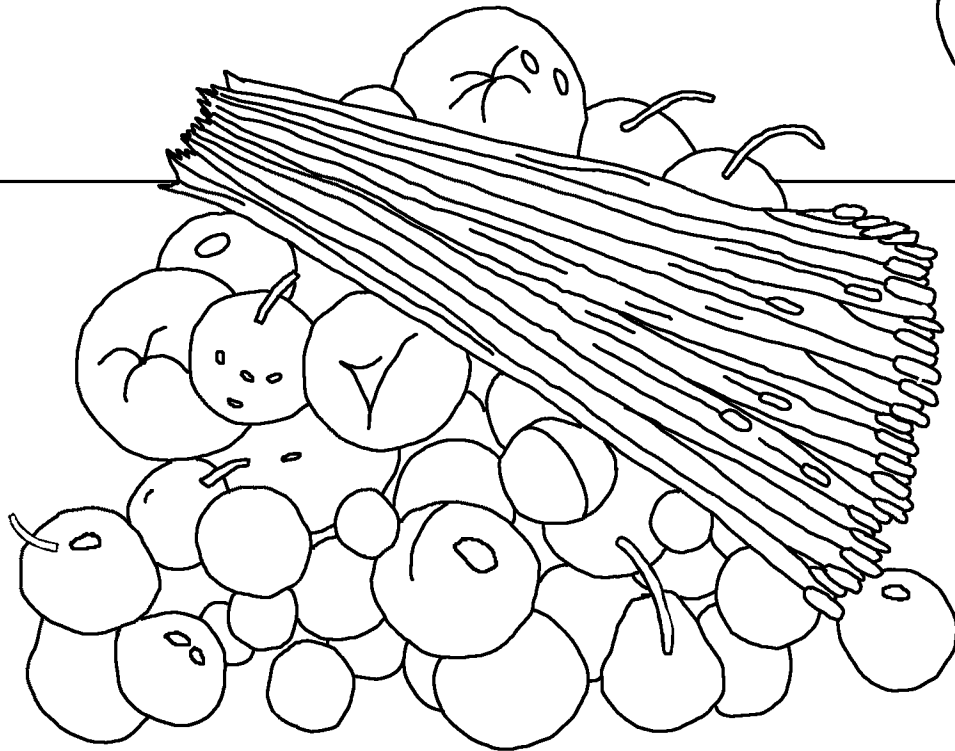
Pathien in

asaanpieh

tai.



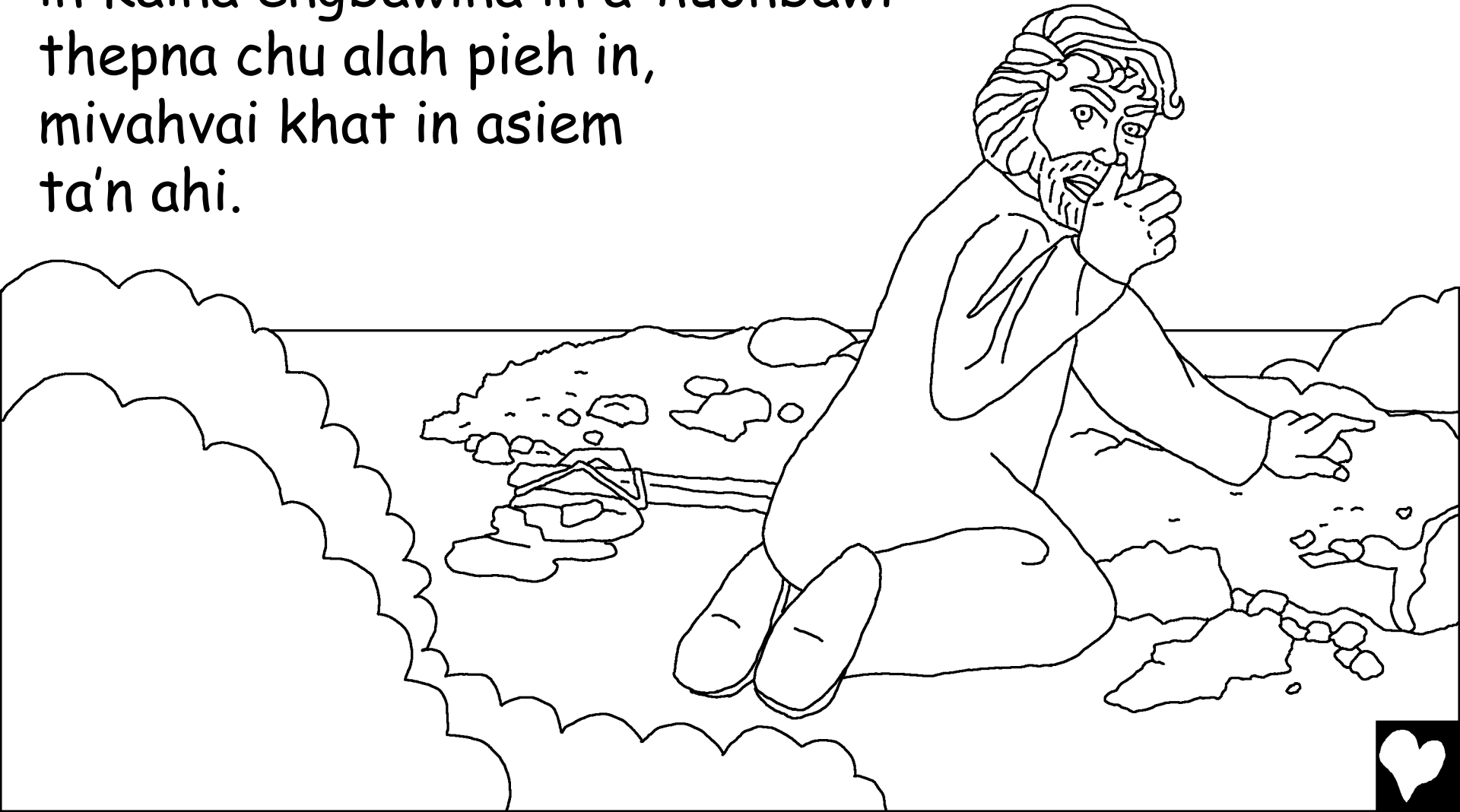
Kaina thilto vang Pathien in
asaanpieh tapoi. Kaina alunghang
lhev jeng in ahi. Hizongle
Pathien in ajah-a, "Thilpha bawl
hile chun Ka-saan pieh da ding
ham?" Ati.



Kaina lunghanna chu abeidieh
tapoi. Phad chomkhat zou in
loumun'ah Abel chu adeng in
athat ta'n ahi.



Pathien in Kaina jah-a, "Nasuopipa, Abel hoi-a um hitam?" atile ama akilep in, "Kahe poi. Keima kasuopipa chingbeh kahim?" ati. Pathien in Kaina engbawlina in a-huonbawl thepna chu alah pieh in, mivahvai khat in asiem ta'n ahi.



Kaina chu PAKAI/Yahweh mitmu-a kuon apoddoh tai.
Aji ding in ama'n Adam le Eve chanu khat akipui in
ahi. Amany chun cha-le-nao anei lhon'e.
Chomkahlou in, Kaina khuopi siem
chu a-tute le atusawn ho'n aluodim
tauin
ahi.



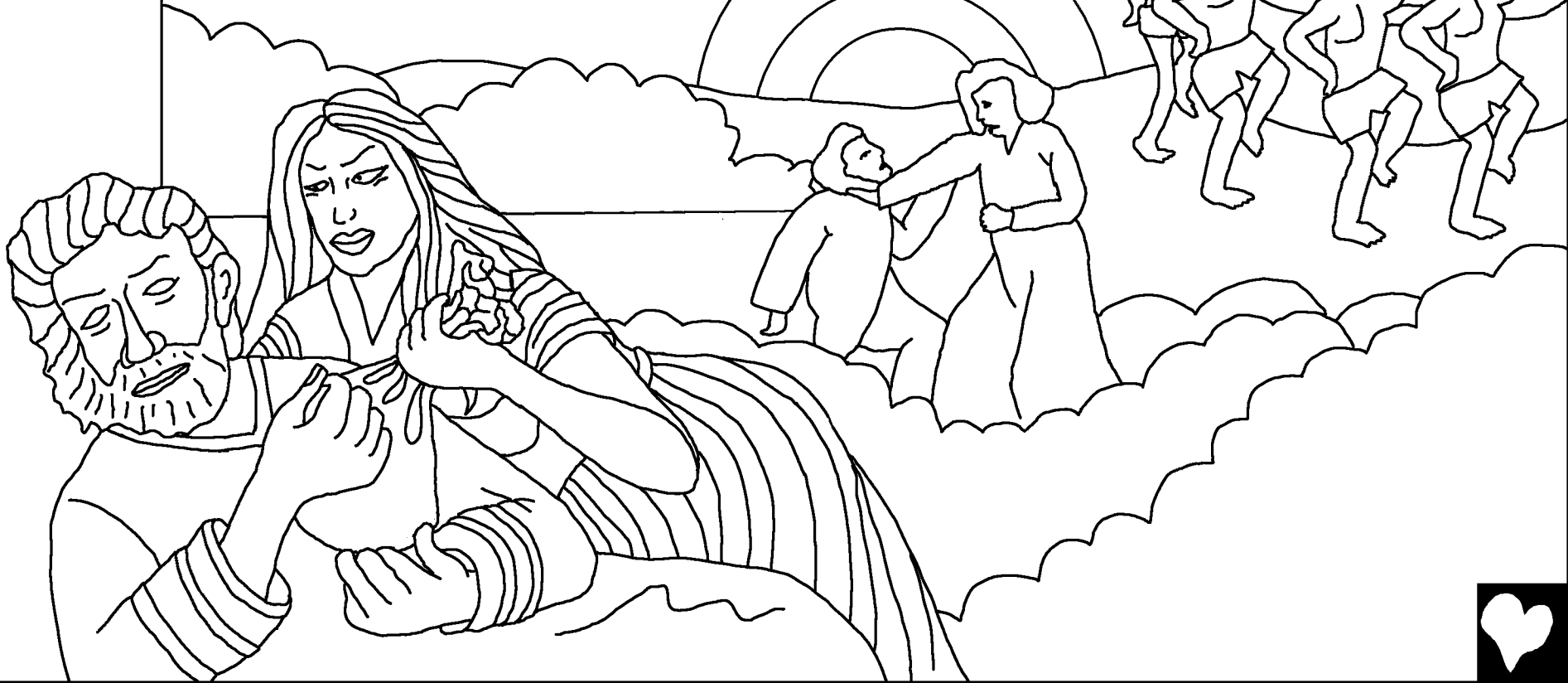
Hicheped chun Adam le Eve
inn-sungmi zong apungtul tul un
ahi. Hichelai-a miho chu tulai-a
miho saang in ahing-sod uve.



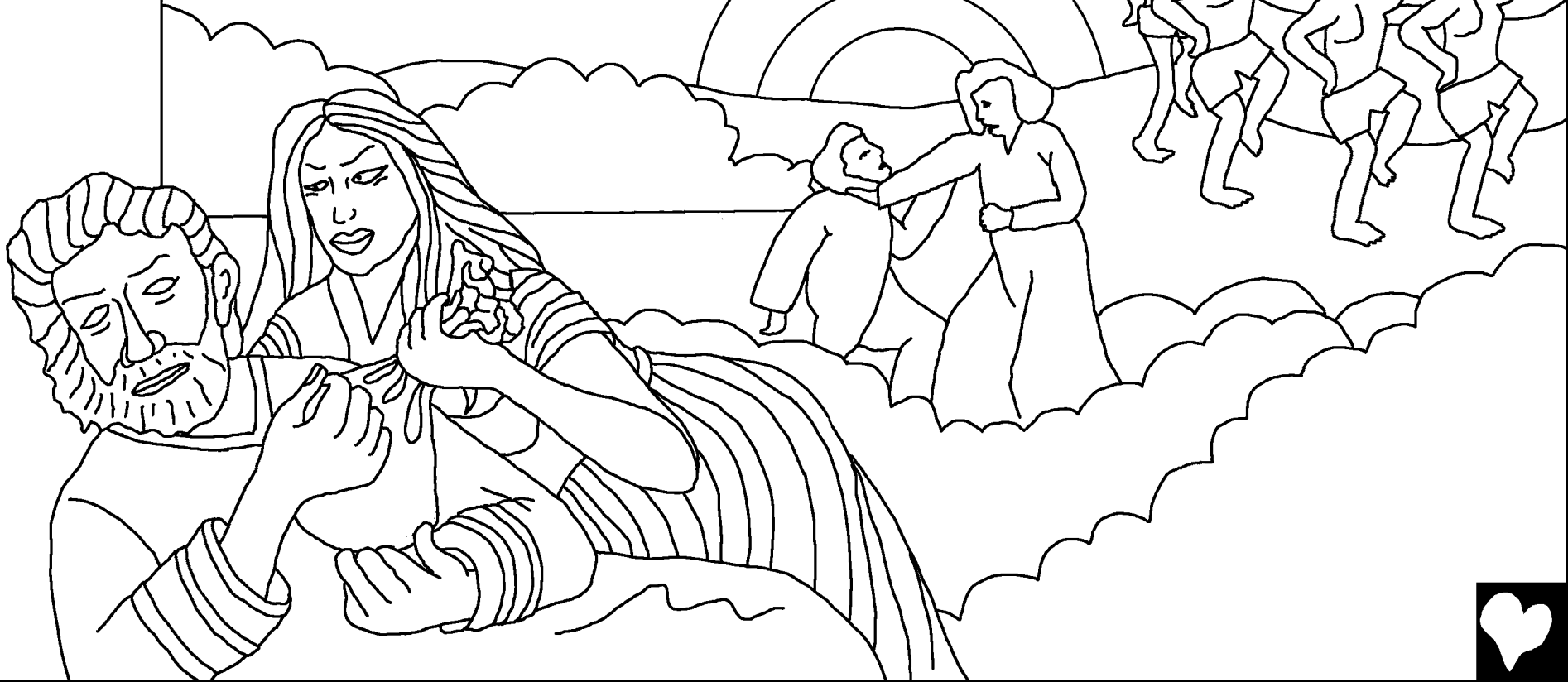
Achapa Seth apien chun, Eve in
"Abel kheel ding Pathien in Seth
eipie tai" ati. Seth chu Pathien
gyng mi ahi'n, kum 912 ahing in
chanu-chapa tamtah anei-e.



Vaan-nuoi'ah, mihiem khansitna apungcheh
cheh jengta'n, chule khang gilou khat
chu khang-gilou khat in ajuipeh in
ahi. Akhonna-a Pathien lunggel
lhah chu suhgam ding'a
mihiemte chule ...



... gamsa zouse le chungleng vacha
zouse hi ahi. Pathien in mihiem
Asiem chu A-da l'eh jeng'e.
Hizongle mi khat in Pathien
lung alhaisah
in ahi.



Hiche mihiem chu Noah ahi. Seth
chilhah, Noah chu michawnpha le
nuolnabei mi ahi. Ama Pathien to
ki-khenlou mi ahi.



Ama'n a-chapa thumho zong Pathien
thu nitje ahil e. Tu'a hi Pathien in thil
hedkhah lou le deichuombeh khat
bawlina ding in Noah
manchah aguo
tai!



Mihiem genthei kipatna

Pathien thu Bible-a, kuon thusim,

akimu na hi

Bulpat-bu Bung 3-6

"Nathu-a sunghah hin vah a pie."

Psalms/Labu 119:130



Akichai tai



2



60



Hiche Bible thusim hin eisiempa-u Pathien
akidanje leh nang in ama naheddoh ding deina thu ahil in ahi.

Pathien in chawnsiet ati, thilphalo eiho'n ibawl'u hi Ama'n ahe-e.

Chawnsiet man talien chu thyna ahi, hizongle Pathien in nangma na-ngailut behseh jeh in Achapa neisun, Jesu, chu nangma chawnsiet jeh-a thigpel'a thy ding le talien manding'a A'hinsawl ahi. Chuin Jesu chu thyna-a kuon in ahingdoh in chule Vaan-gam inn juon in achie tai. Nangma'n Jesu natahsan'a chule Ama hieng'a nachawnietna ho ngaidam na-thuum'a ahile Ama'n na-ngaidam ding ahi! Ama hung'in tin nalung sung'a cheengpai ding chule nangma tuonsod-gei-a Amato nahin ding ahitai.

Nangma'n hiche hi thu-tahbeh ahi ti natahsanle, Pathien hieng'a hiti hin tao in: Ka-ngai Jesu, nangma Pathien nahi ti katahsan'e, chule keima chawnsiet jeh-a thy ding in miheim in nahungpieng in, chule tu hin nangma na-hing kid tai. Lungsiet tah in kalung sung'a hung cheeng in chule kachawnsietna ho ei-ngaidam in, chutile keima'n tua hi hinkhuothah kanei ding, chule nikhat tiengle nangmato tuonsod-a ka-um ding ahi. Nangma thu-a nung ding le nacha khat bang'a hing ding in eikithuopi in. Amen.

Bible ni-siehle sim in lang chule ni-sieh in Pathien
to kihou zing in. John 3:16

