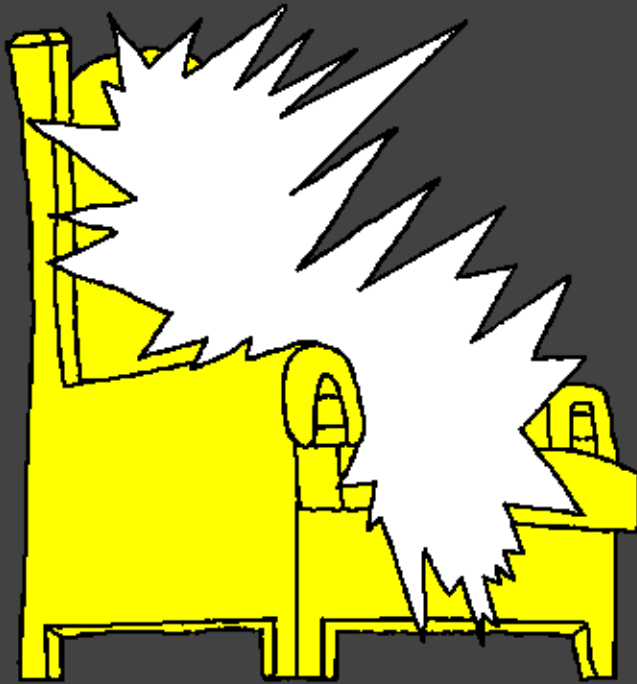
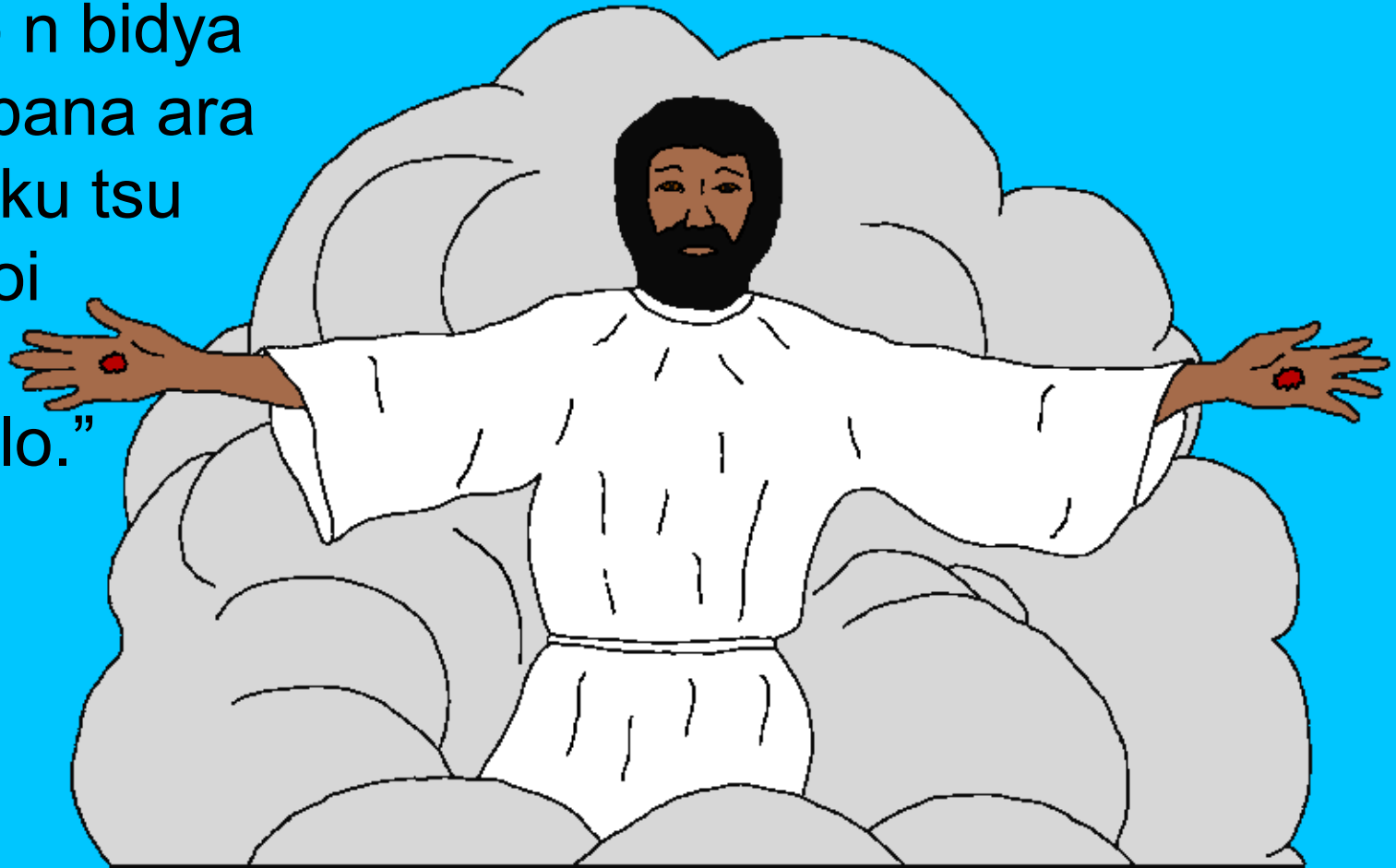


www.BibleForChildren.org

Yahaya 14



Yesu tonukoi atoni a ne, “Kotsu i dambula wa. Wushuki n Kashila, i wushuku kpam na mpa. A'unu a da pini ushani a kuwa ku Tata u va, kpam nte ma bana de tsara n fobusuko da asu. A da baci nala wari wa, mari ma tonuko da ta. A'ayin a da baci n yain nala, aku n gono n bidya da ubana ara va, aku tsu rongoi de kabolo.”



Mpa Yahaya, mpa dem Katoni ka a asuvu a
Kawauwi tyoku u de, a yan mu ta dem mavura
tyoku da a yanka da. Mpa dem uza u te

u da a asuvu a tsugono tsu Kashila tyoku
u de, k pam u kana ta n



kawunku upana u
ikyamba u va tyoku
da dem i kawunki.

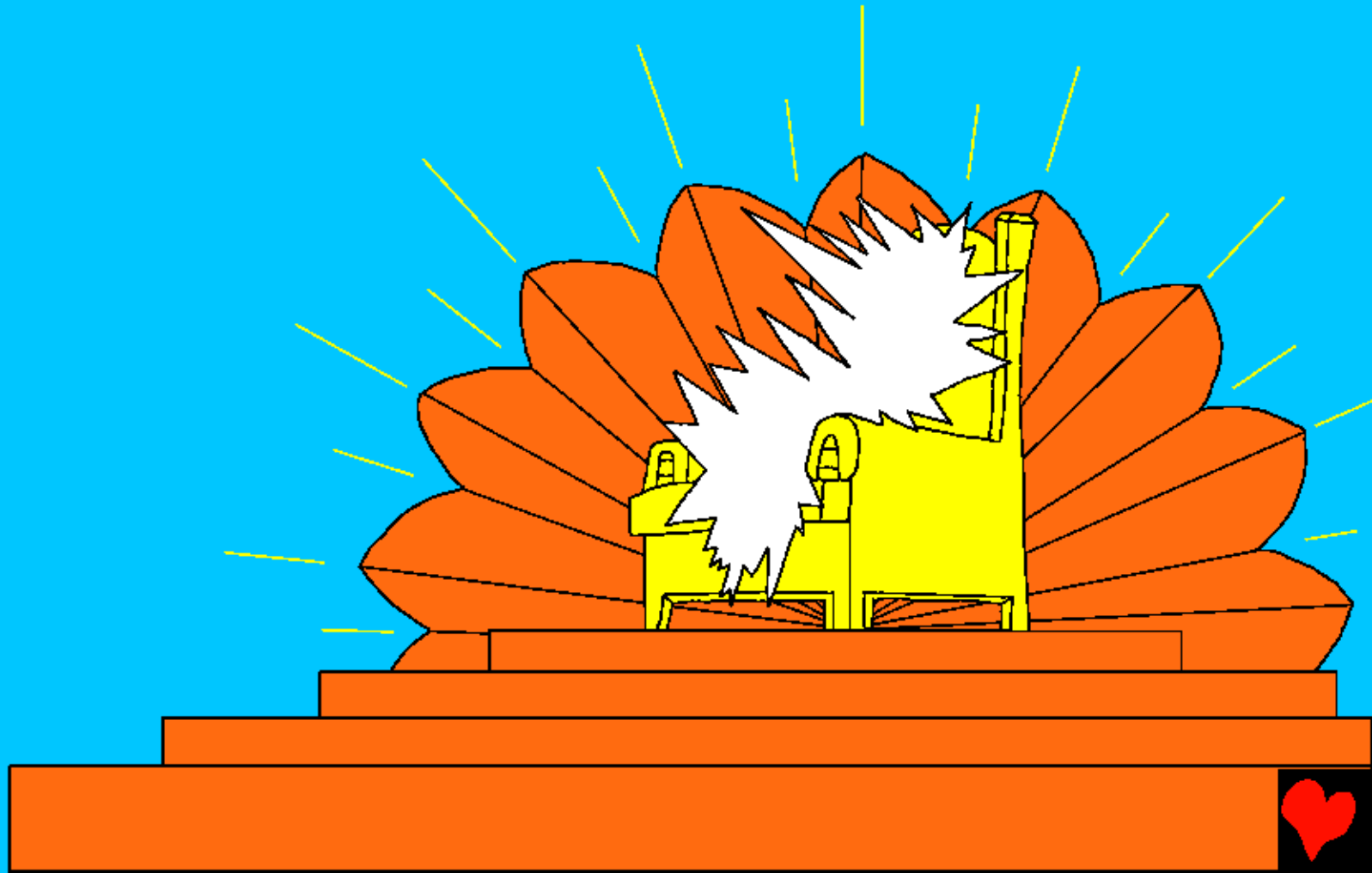


A banka mu ta_a Patumo uyamba u mere u
mini, a a_saka_mu de adama a da n yain kubari
ku kadyanshi ka tsugono tsu Kashila,

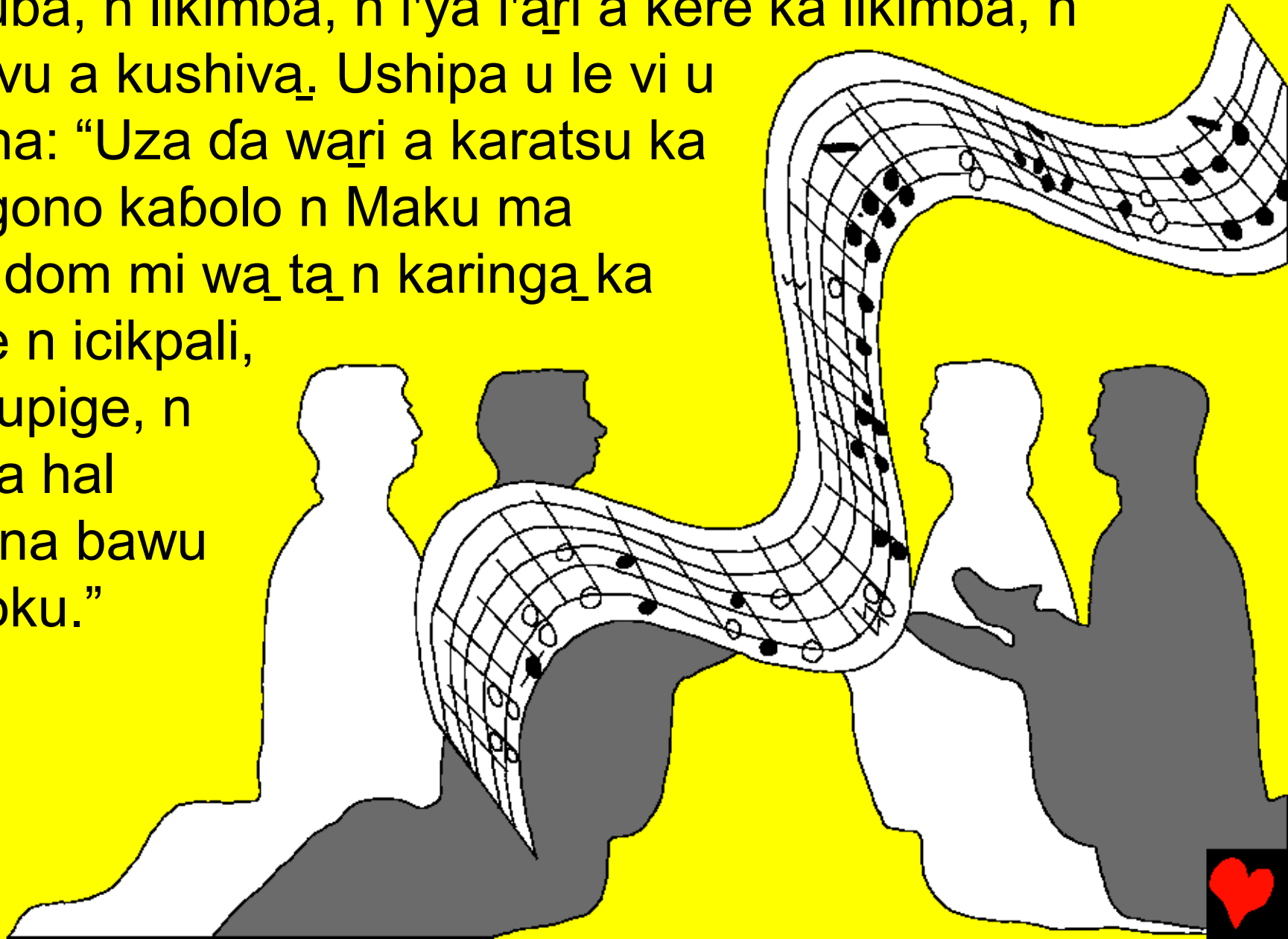
n ukuna u mayun u da Yesu Kawauwi
wenikei.



Kute-kute Kulu Keri ku Kashila ku tonoi na mpa, aku pini a zuba vi n wenei karatsu ka tsugono n uza roku pini ndishi.



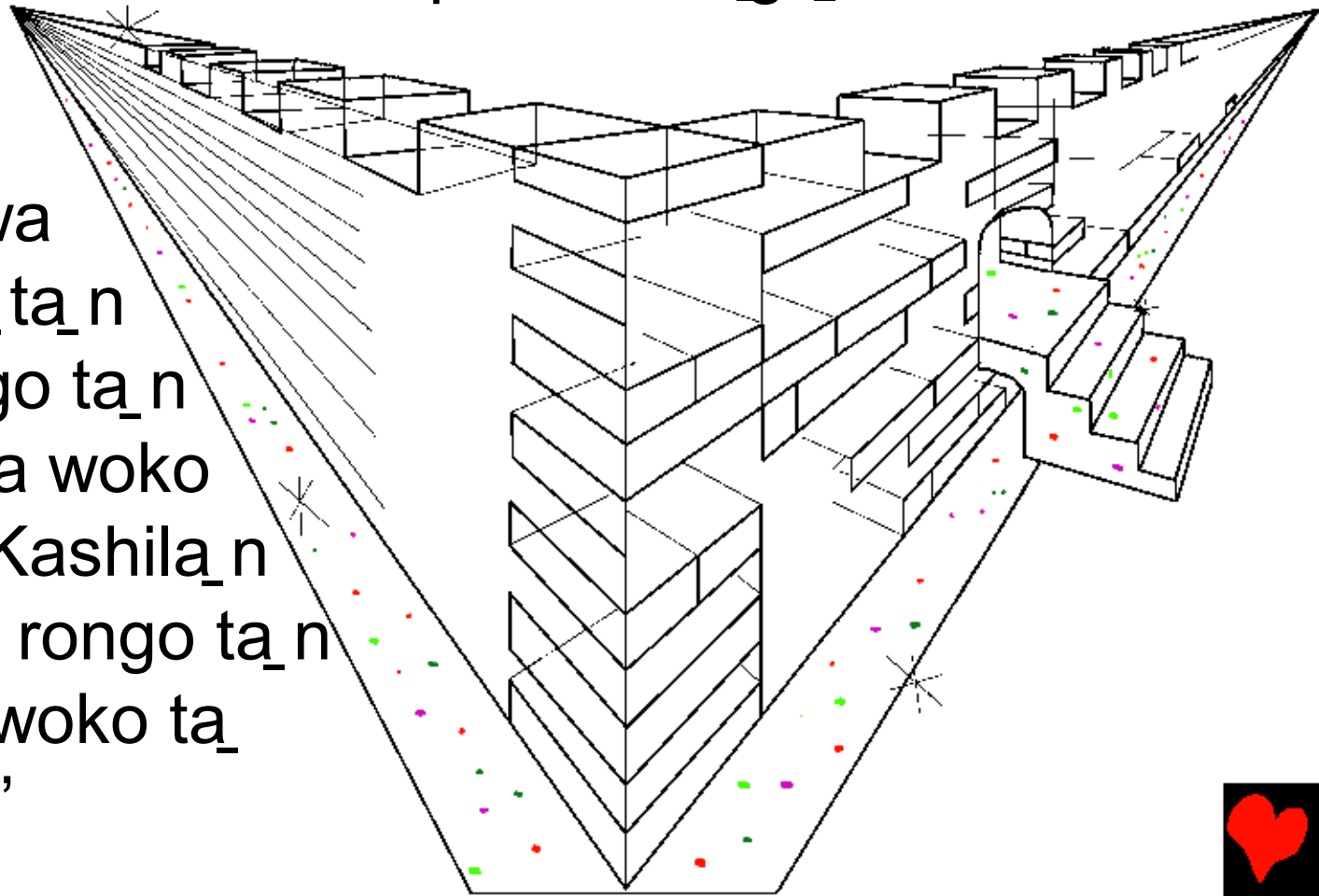
Aku n panai gba_ili i uma ya shipa; wata, gba_i'ya i'ari
a zuba, n likimba, n i'ya i'ari a kere ka likimba, n
asuvu a kushiva_. Ushipa u le vi u
da na: “Uza da wa_ri a karatsu ka
tsugono kabolo n Maku ma
Kondom mi wa_ta_n karinga_ka
pige n icikpali,
n tsupige, n
ucira hal
ubana bawu
utyoku.”



N wenei kpam ilyuci i pige i'ya a wulukpei i'ya Kashila_ka suki; wata, Urishelima u savu, u wutaj_ a zuba wa cipa_ a iyamba. Ilyuci i pige yi tyoku u uka da u ukai aminya a iyolo a ne da wari, kpam u fobusoi u gawunsa n vali u ne. Aku n panai kalagatsu a karatsu

ka tsugono,
ka danai,

“Gogo-na kuwa
ku Kashila_ka_ ta_ n
ama! Wa rongo ta_ n
ele, kpam a ka woko
ta_ ama a ne. Kashila_ n
kaci ka ne wa rongo ta_ n
ele kpam wa woko ta_
Kashila_ka le.”



An katsumate ka zuba ki ka wenike mu ilyuci i savu yi, aku kpam u wenike mu agaṭa_a ḍa a'arī n mini ma ma tsu naḱa_uma. A ka laḍa cika yavu madubu ma ma wundyamgbanaḱa. A gitaj uyene a karatsu ka tsugono tsu Kashila_n ka Maku ma Kondom a dusuki vi.



Ilyuci i pige yi ya ciga kaara ko uwoto a naka_ katyashi pini wa. Kpaci tsupige tsu Kashila_ tsa tsa lada pini aku Maku ma Kondom ma wakanai asu vi yavu macikalu.



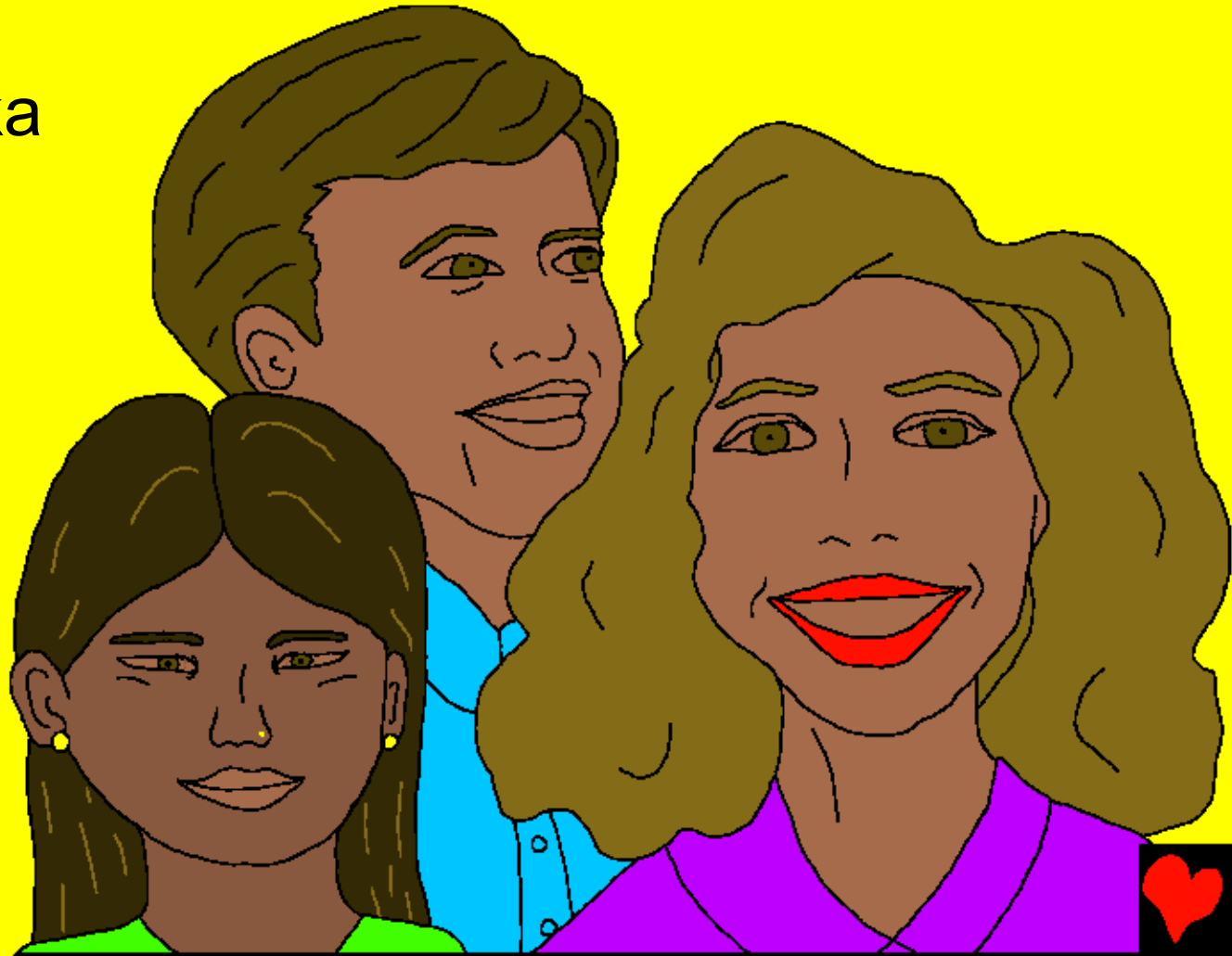
Ili i cingi i'a_la i'ya a ka
a_saka_i uwa pini asu vi
wa. Nala dem uza da
baci dem u yain ili i
uwono, ko kaban a ka
a_saka_yi u uwa pini wa,
shegai aza da a
korongi a'ala a le a
Tagarada u Aza a Uma
u da Maku ma Kondom
mari n u da.



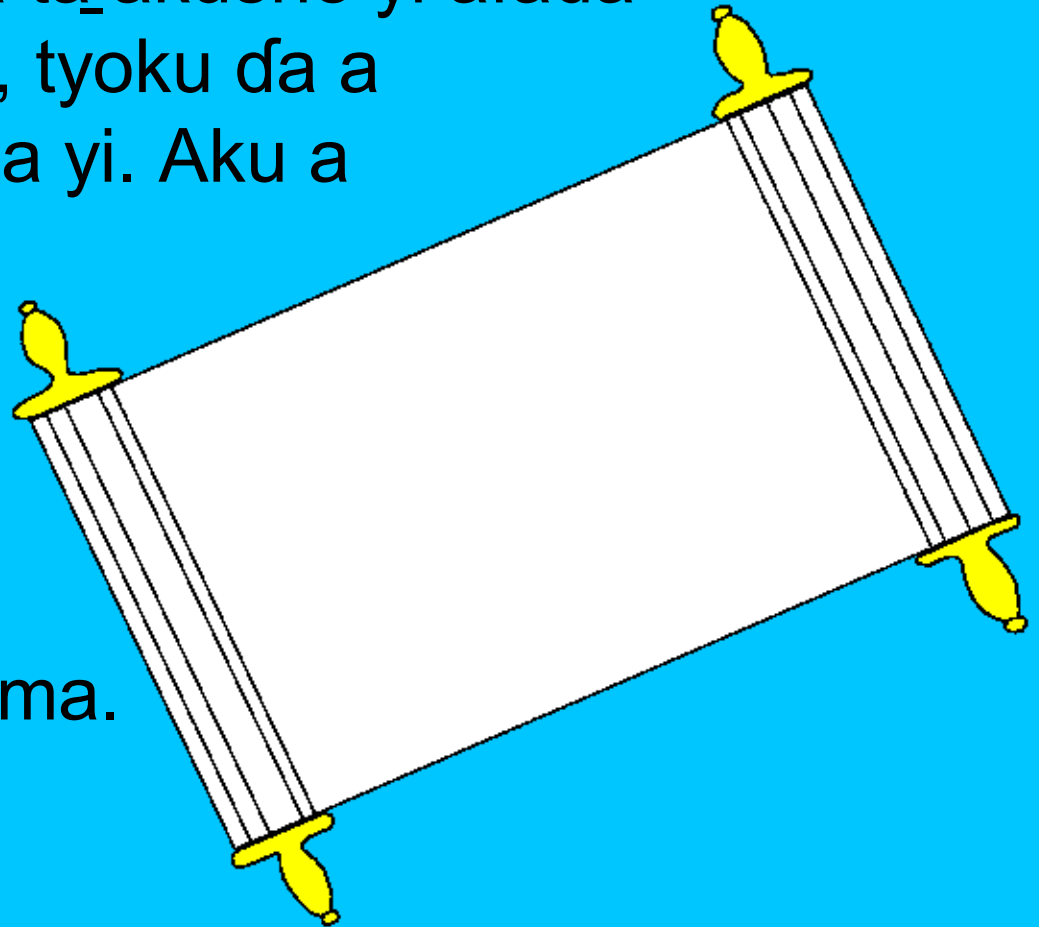
Wa yansaṣa ta meshi ma le gba. Ko
uza wa kuwa kpaṃ wa. Uza wa
namgba kpaṃ katsuma wa, ko u sai
ko kpaṃ u doku u pana ikyamba
wa. Ili i cau i'ya i kotso de.



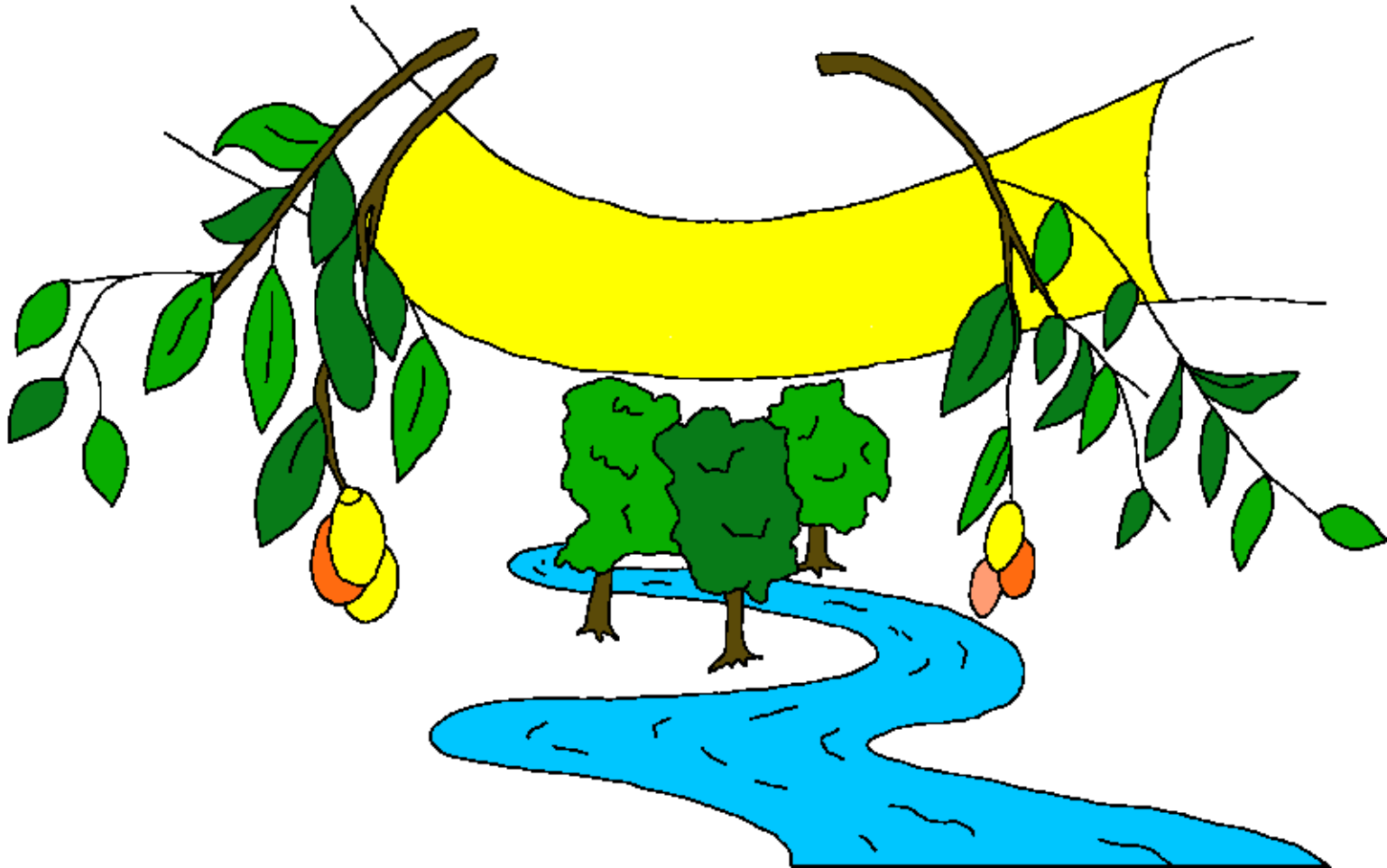
Ili i'a_la i'ya Kashila_ka yankai una_u cingi pini a ilyuci yi wa. Karatsu ka tsugono tsu Kashila_n ka Maku ma Kondom a dusuki vi a ilyuci yi i'ya ka rongo, kpam agbashi a ne a ka gbashika yi ta_. A ka wene ta_ upetiwa'eshi u Kashila_n kala ka ne ukorongi a acen a le.



N wene ta_kpam gba_ama da a kuwusai a'ari kushani a kapala ka karatsu ka tsugono ki, azapige n aza a kenu. Aku a kukpai itagarada i'ya a korongusi ili i'ya ya dem yansai. A kukpai kpam tagarada roku; wata, Tagarada u Aza a Uma. A yanka ta_akushe yi afada ya dem n ili i'ya u yain, tyoku da a korongi pini a itagarada yi. Aku a vutalaj_ama a kushiva_ku akina ki; wata, uza da baci dem kala ka ne bawu kari ukorongi a asuvu a Tagarada u Aza a Uma.



Kulu Keri n ukasavu u Maku ma Kondom mi a danai,
“Tuwa!” Uza da baci u panai akani a na yi a_saka_u
dana, “Tuwa!” Uza da baci wa pana kakuli u tuwa, uza
da baci dem wa ciga, a_saka_u kene mini ma uma
gbani.



Tyoku dā Kashila_ka cigai ama a
likimba cika u dā na: u neke ta_
Maku ma te ma ne koshi tsara_uza
dā baci dem u wushuki n eyi kotsu
u kuwa_wa, shegai u tsara_uma u
dā bawu wa_ri n utyoku.



Roma 3:23 Ya dem yan ta_ unyushi u cingi, kpam tsu gusa_ ta_ a tsupige tsu Kashila_.

Roma 6:23 Katsupi ka unyushi u cingi ukpa_ u da, shegai Kashila_ ka naka_ tsu ta_ uma u da bawu wari n utyoku gbani a asu Yesu Kawauwi Asheku a tsunu.

Kagali ka Ibrahi 9:27 U kana_ ta_ ya dem u kuwa_ kuten, aku Kashila_ ka yanka yi afada.

Afisu 2:8,9 Adama a ukuna u shinga u ne u da u wenike da_ koshi, da u wauwa da_ a asu u da i pityanangi n Kawauwi. U wauwa da_ adama a ili i shinga i ' ya i yain wa, nala kune ku Kashila_ ka ara de, adama a ili i ' ya i yain da wa. Da gai i zuwai bawu uza wari la uza da wa fuda wa cikpala kaci ka ne ki.



Roma 10:9,10 Vu dana baci bawu uwonvo, “Yesu Asheku a ɗa,” kpam vu wushuku baci a katakasuvu ka vunu Kashila_ka ' yangasa_yi ta_a ukpa, Kashila_ka wauwa vu ta. Tsu wushuku ta_n atakasuvu a tsunu, adama a nala a ɗa Kashila_ka gonuko tsu tsu woko dere. Kpam tsu dana ta_bawu u uwonvo, tsu wushuku ta, adama a nala a ɗa kpam tsu tsaraj iwauwi.

Yahaya 3:16,17 “Tyoku ɗa Kashila_ka cigai ama a likimba cika u ɗa na: u neke ta_Maku ma te ma ne koshi tsara_uza ɗa baci dem u wushuki n eyi kotsu u kuwa_wa, shegai u tsara_uma u ɗa bawu wari n utyoku. Kashila_ka suku Maku ma ne a likimba tsara_u kidaga ama ugana u ukpa_wa. Shegai u suku yi ta_tsara_u wauwa le.”



1 Yahaya 5:11-13 Ili i ' ya Kashila_ka tonuko tsu i ' ya na:
Kashila_ka naka_tsu ta_uma u da bawu wari n utyoku, Maku
ma ne ma kpam ma zuwai uma vi u yain. Uza da baci wari
n Maku mi, wa_ta_n uma. Uza da baci bawu wari n Maku
ma Kashila_wa_n uma wa. Eda_aza da i wushuki n Maku
ma Kashila_edā ma koronku, tsara_i reve an i ' ari n uma u
da bawu wari n utyoku.



Yahaya 14; 2 Korintiya 5; Kuwene 4, 21, 22

Storyline by: Edward D. Hughes

Illustrated by: Lazarus
and Alastair Paterson

Adapted by: Sarah S.

Tsikimba NT (kdl) © 2010, Wycliffe Bible Translators, Inc.
All rights reserved.

<https://www.bible.com/bible/426/MAT.1>

©2025 Bible for Children, Inc.

www.M1914.org

www.bibleforchildren.org

